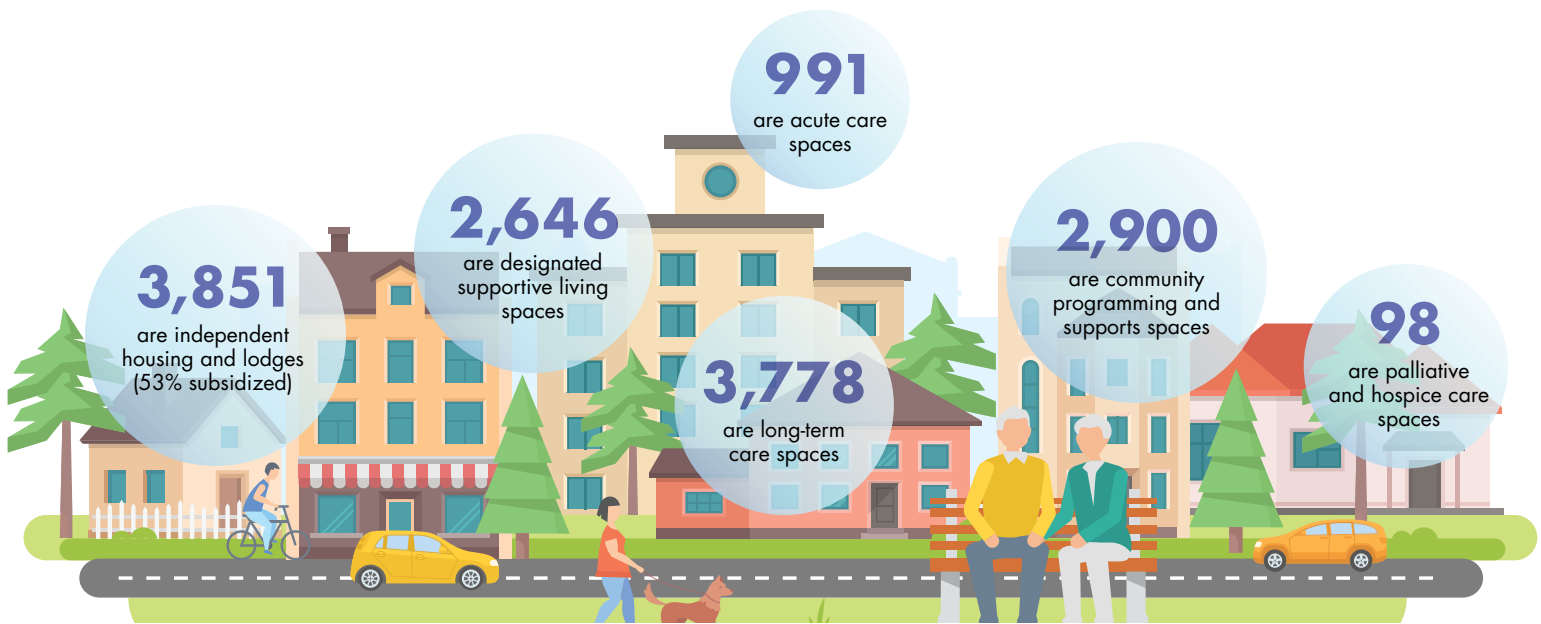


CHAA: By the numbers



14,000+ SPACES ACROSS ALL SECTORS

CHAA operates 14,376 spaces across the seniors' health and housing continuum. Our presence is well established throughout urban and rural communities.

AN ESSENTIAL EMPLOYER OF 18,000+



Members of CHAA are a key stakeholder in Alberta's health system, seniors' housing programs and the provincial job market. We employ more than 18,000 staff with an annual payroll in excess of three-quarters of a billion dollars. Nearly one-quarter of Alberta's physicians have privileges to deliver care in a CHAA facility, and 85% of our non-physician workforce is governed by collective agreements.



Community support is our lifeline

For every three staff members in our employ, CHAA is blessed with the support of one volunteer staff. More than 7,500 volunteers contribute in excess of 400,000 hours per year – meaning each resident in our care benefits from 30 hours of extra TLC from a caring volunteer.

Heart & Home

30 HOURS of TLC

The quality of life for each senior in our care is enriched by 30 hours of TLC from volunteers

50
per cent

More than 50% of our independent housing units are subsidized to support low-income residents

SERVING THOSE MOST IN NEED

CHAA members serve the most vulnerable and frail seniors in Alberta, offering:

40%

of Alberta's palliative care and hospice beds

27%

of Alberta's designated (publicly funded) supportive living beds

26%

of Alberta's LTC beds requiring 24/7 nursing care