

Redevelopment Proposal

Halle du Marché



Prepared by:
Sara Peach
May 2025

Image from cartorum.fr

Site Analysis

Location

Size

Existing Context

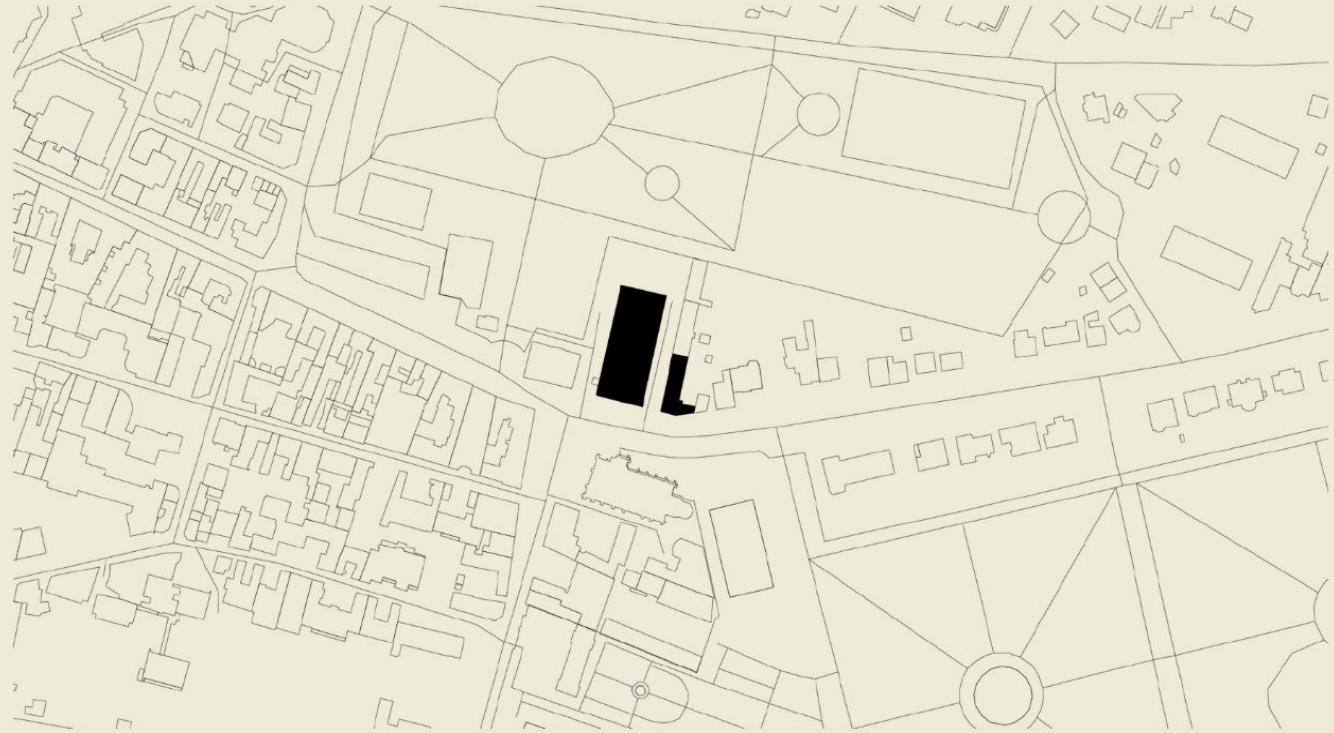
Historical Significance

Key Actors



Site Analysis

Location



Site Analysis

Size



Image from Claudia Becerra-Baudry (google reviews)



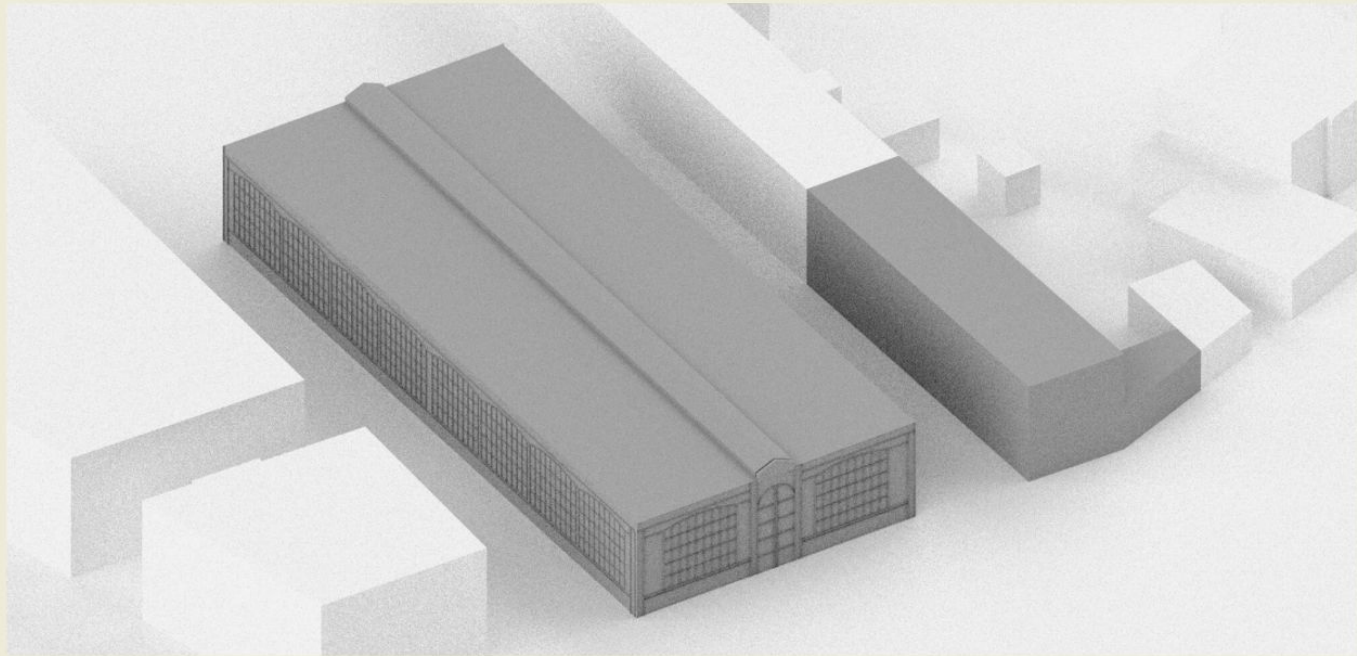
Image from justacote.com



Image from sceaux.fr

Site Analysis

Existing Context



Site Analysis

Historical Significance



Image from Departmental archives of Hauts-de-Seine

Circa 1900

Site Analysis

Key Actors



SCEAUX.fr

The logo for SCEAUX.fr features the word "SCEAUX" in a bold, black, sans-serif font, followed by ".fr" in a smaller, blue, sans-serif font.

**RÉPUBLIQUE
FRANÇAISE**

*Liberté
Égalité
Fraternité*



**Paris
Habitat**

Interview

Pauline Joseph-Julien

Responsable de Service Habitat | Direction Aménagement du
Territoire, Tourisme et Enseignement Supérieur for Melun Val de Seine

● **What makes
social housing in
France different?**

20-25% of houses
in a community
must be social
housing.

● **Who qualifies for
social housing in
France?**

70% of French
population
qualifies for social
housing.

● **How does rent and
income play a role
in social housing?**

Income based rent
with a maximum
of 30% of ones
income.

● **What are the
biggest challenges
you face working in
the Paris context?**

High demand for
social housing but
low turn over rates.

Benchmarks

①

Station F

Modular based
programming to
adapt to the
existing building.

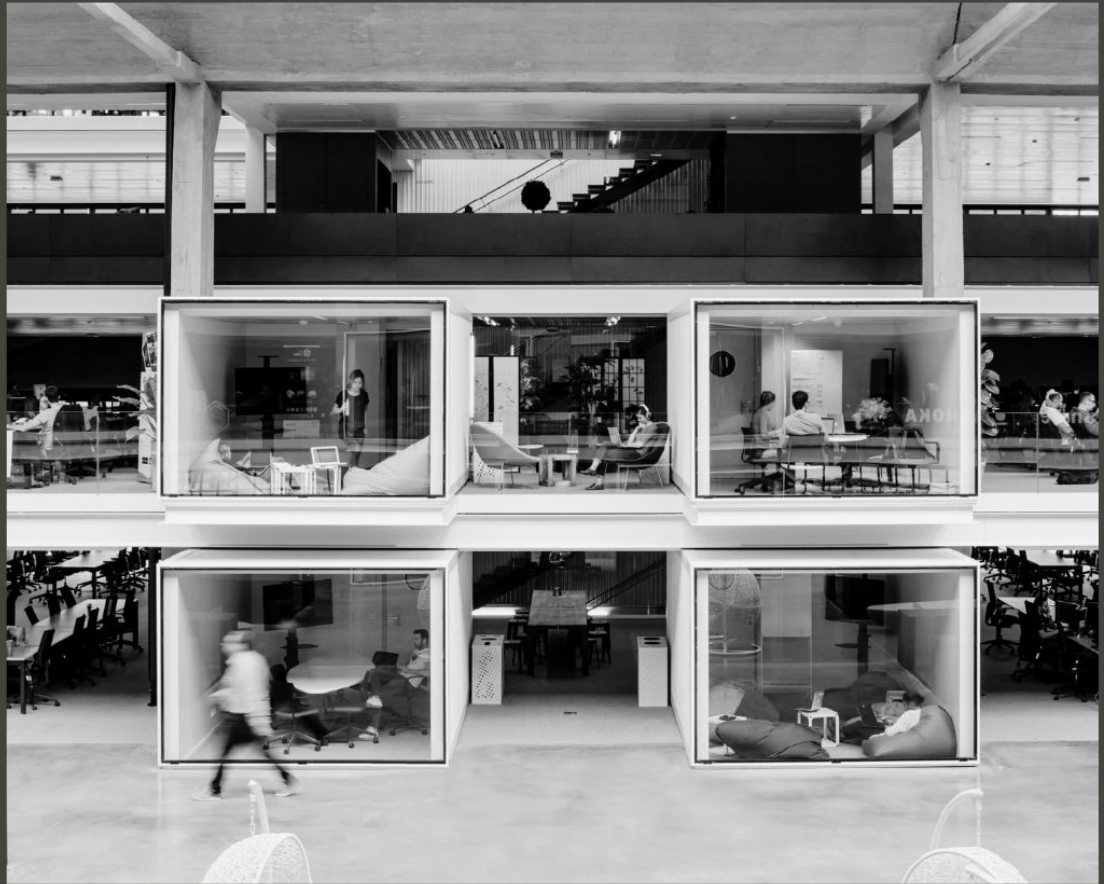


Image from Wilmotte & Associates

Benchmarks

②

Parc Princesse, Le Vesinet

Utilizing the context to implement a design that compliments the exisiting.



Image from Camille Gharbi

Proposal

Social Housing

Utilizing the existing structure and secondary building to add social housing in addition to the current market.

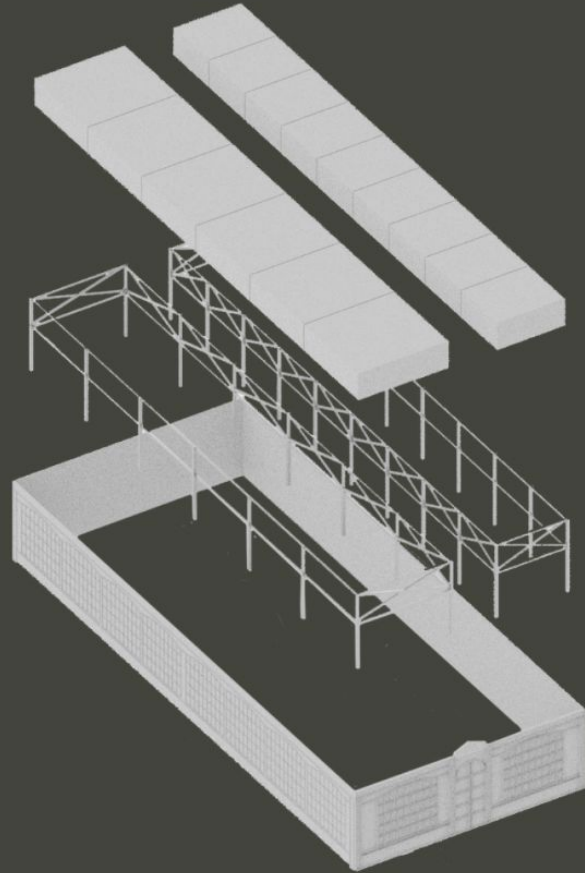


Image from wikipedia.org

Implementation Plan

Social Housing

Modular system to compliment the existing structure.



Conclusion

①

Authenticity

Rather than creating a new building, how can the existing building support new and needed ideas?

②

Sustainability

Acknowledge what has already been built and how one can adapt what to meet the needs of today.