

Exclusive Charter



Vacays by Mindy presents

Normandy, Paris & the Seine River Cruise

featuring 7 nights aboard the Amadeus Diamond

9 Days October 8, 2024



BOOKING DISCOUNT!

Save \$200 per person
\$400 per couple*

*See Reservation Info for
Booking Discount details



Etretat

9 Days
Normandy, Paris & the Seine River Cruise

Day 1 - DEPART US - OVERNIGHT FLIGHT

Day 2 - ARRIVE PARIS

Meet your PWD Tour Director - Transfer to your ship
 Board the **MS Amadeus Diamond** for your **7 Night Seine River Cruise**
Welcome Drink & Welcome Dinner onboard - Ship departs Paris

✕ (D) *Overnight - Amadeus Diamond*

Day 3 - CONFLANS

Morning - Cruising - Arrive in Conflans
 Afternoon - **Auvers-sur-Oise Excursion** (Village of Van Gogh)

✕ (B,L,S & D) *Overnight - Amadeus Diamond*

Day 4 - ROUEN

Morning - **Rouen Walking Tour** (Museum Town)
 Afternoon - Explore Rouen on your own - Ship departs late afternoon

✕ (B,L,S & D) *Overnight - Amadeus Diamond*

Day 5 - LE HAVRE

Morning - **Étretat Tour** (Walk along the Normandy Coastline & scenic village)
 Afternoon at Leisure or *Optional Excursion to Honfleur*

✕ (B,L,S & D) *Overnight - Amadeus Diamond*

Day 6 - LE HAVRE - CAUDEBEC-EN-CAUX

Full Day Tour of Historic Normandy with Lunch (WWII D-Day Landing Beaches incl. Omaha Beach, American Cemetery Colleville & WWII Museum)

✕ (B,L,S & D) *Overnight - Amadeus Diamond*

Day 7 - LES ANDELYS - ONBOARD CRUISING ALL DAY

Morning - Cruising or *Optional Excursion to Monet's House & Garden*
 Afternoon - Relax & Seine River Cruising

Gala Farewell Dinner Onboard

✕ (B,L,S & D) *Overnight - Amadeus Diamond*

Day 8 - PARIS

Morning - **Paris City Tour** - Afternoon at Leisure in Paris to explore
Optional Excursion - Montmartre Walking Tour

Final Dinner Onboard in Paris - Ship Docked overnight in Paris

✕ (B,L,S & D) *Overnight - Amadeus Diamond*

Day 9 - PARIS - FLIGHT HOME

Transfer to the Paris Airport for your flight home

✕ (B)

B-Breakfast Onboard • S-Snacks Onboard afternoon and/or evening
 L-Lunch Onboard • D-Dinner Onboard w/ Beer & Hand Selected Wines

CITIES & PORTS

PARIS

Paris, the "City of Light" is the world's most visited capital. Enjoy a Paris City Tour to see the beloved landmarks that line the Seine including the Notre Dame Cathedral, the Louvre and the Eiffel Tower. Also see the majestic Arc de Triomphe and ride along the Champs-Élysées. During your leisure afternoon maybe wander the historic banks of the Seine which are a UNESCO World Heritage Site.

CONFLANS - AUVERS-SUR-OISE

Visit the village of Auvers-sur-Oise, an inspiration to many of the famous Impressionist masters including Cezanne, Pissarro & Daubigny. The most famous of these artists is Vincent van Gogh. See Auberge Ravoux, where Van Gogh lived. See his final resting place & where he was inspired to create nearly 80 canvases. Experience a multimedia museum journey about the great masters at the Chateau D'Auvers featuring over 500 paintings set in motion with sound effects & period music.

ROUEN

Enjoy a Rouen Walking Tour including a visit to the magnificent cathedral that inspired Claude Monet, and the modern Church of Joan of Arc with its wonderful 16th-century stained-glass windows. Rouen is known as Museum Town for its many museums, was important in the Roman era and Middle Ages, and features a cobblestoned pedestrian center with medieval half-timbered houses.

LE HAVRE - ETRETAT

A UNESCO World Heritage Site & important port, Le Havre, sits where the Seine River meets the English Channel. The harbor was destroyed in World War II and was rebuilt. Enjoy a Etretat Tour to explore the famous Normandy coastline featuring cliff-top paths for views of steep chalk rocks with impressive needlelike formations, which have inspired many well-known artists. Enjoy some leisure time in the attractive seaside village of Etretat.

HISTORIC NORMANDY TOUR

Discover Normandy on this full day tour featuring many historic landmarks. Visit Pointe du Hoc, site of a German artillery unit where the US Army climbed 100 foot cliffs. Stop at Omaha Beach, the most famous of the five code named beaches. Visit Colleville Sur Mer, an American Cemetery where over 9,000 American troops are laid to rest. Enjoy lunch before a visit to a World War II Museum to learn more about the landings, battles and liberation of this region.

LES ANDELYS - SEINE CRUISING

This morning stop in the little town of Les Andelys in the shadow of Chateau Gaillard, one time home to Richard the Lionheart. An amazing optional will be available to visit nearby Giverny, home to Impressionist Claude Monet, where you see Monet's House & wander his Garden. The optional makes a photo stop at Chateau Gaillard. After a long day to Normandy, today is the perfect day to relax onboard for a half or full day & enjoy the passing Seine scenery and ship amenities.

Optional 2-Night London Post Cruise Extension

\$925 pp dbl +\$450 single supplement

DAY 9 - PARIS - EUROSTAR TRAIN - LONDON SIGHTSEEING

Board the **Eurostar Train** in Paris for the 2.5 hour rail experience to London. Enjoy a **London City Tour** to see Kensington Palace, the Tower of London, Trafalgar Square, the Houses of Parliament, Big Ben & Buckingham Palace.

✕ (B-onboard ship) *Overnight - London*

DAY 10 - LONDON - DAY AT LEISURE - PUB DINNER

Explore London at your own pace. Later gather for a traditional Pub Dinner.

✕ (B & D) *Overnight - London*

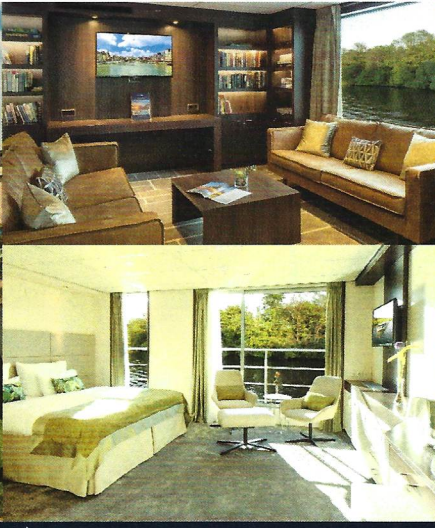
DAY 11 - LONDON - TRANSFER TO AIRPORT - FLIGHT HOME ✕ (B)

London Optional Extension Includes: 2-Nights Hotel Accommodations - London, Eurostar Train from Paris to London, London City Tour, 3 Meals (2-B & 1-D), Tour Manager & Transfers to London Heathrow Airport.

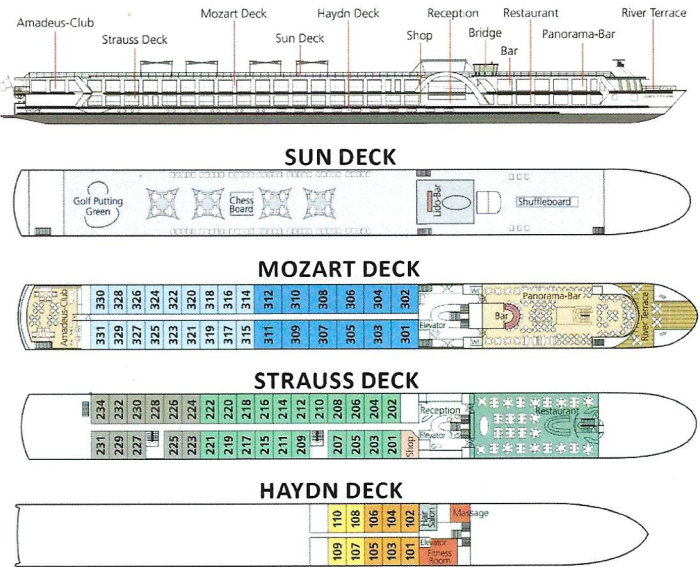
Notes: London Extension must be booked at time of deposit. Passengers must wheel own luggage onto train. Due to group air policies outbound air could be different schedule than the group for London extension passengers. Based on 20 passenger minimum.



Rouen



MS AMADEUS DIAMOND DECK PLAN



THE SHIP - MS AMADEUS DIAMOND

The 144-passenger *MS Amadeus Diamond* has been a highlight of the fleet since 2009, and is the new jewel of the French waterways after its complete renovation in 2019. The refresh upgraded both the interior of the ship and the ship's technology. The Diamond travels exclusively along the Seine and allows guests to experience the charm of northern France in an unforgettable way. The extensive Restaurant and the Panorama Bar offer divine views of the passing riverscapes. The 60-staterooms & 12-suites are bright, modern and provide a wonderful private space to enjoy your river cruise. The attentive English Speaking onboard service staff will see to your comfort with typical European hospitality. The beauty of river cruising is that the most interesting destinations come to you. This Diamond charter features English-only onboard commentary with inclusive sightseeing excursions balanced with choice to simply relax onboard during your leisure time or add sightseeing with optional excursions. The ship offers countless choices for your leisure time including a putting green, fitness studio, massage facilities & quiet spaces to escape with a book.

ALL MEALS INCLUDED ONBOARD

Three meals daily are served graciously in the exquisite restaurant and feature local & international specialties. All dinners are four courses and are served with included Hand Selected Wines, Beer & Soft drinks. While dining, you have splendid views of the passing scenic landscapes through the large picture windows. Enjoy afternoon and/or late evening snacks in the lounge based on the daily schedule.

COMFORTABLE & MODERN STATEROOMS

After boarding, unpack once. All staterooms onboard offer excellent river views and are bright, modern and inviting giving you a space of your own with all the amenities and pleasant touches of an upscale hotel. The Mozart & Strauss Decks feature suites and staterooms with French Balconies. Staterooms on the Haydn Deck have a fixed window. Each stateroom is fully equipped with comfortable & modern furnishings including flat screen TV, individual heating/air conditioning controls, safe, phone, hair dryer and a private bathroom with shower.

SHIP TECHNICAL DATA

Refurbished/Built: 2019/2009 Decks/Crew members: 4/40
Length/Width (ft): 361/36.5 Cabins/Suites: 60/12

INCLUSIONS

- Roundtrip Airfare - BWI or PHL/IAD (-\$100 pp)
- 7 Night Cruise - Outside Cabin
- 20 Meals (7-B, 6-L, 7-D)
- Hand Selected Wines & Beer w/ Dinners
- PWD Tour Director
- Ship Staff
- Wi-Fi Onboard
- Welcome & Farewell Dinners
- Int'l Air Taxes/Fuel/Port Charges
- Baggage Handling at Ship
- Roundtrip Ship Transfers

HIGHLIGHTS & EXCURSIONS

- Paris City Tour
- Full Day Historic Normandy Tour - WWII D-Day Landing Beaches incl. Omaha, Colleville Cemetery and WWII Museum
- Auvers-sur-Oise Tour with Chateau D'Auvers Museum
- Rouen Walking Tour
- Étretat Tour - Normandy Coast & Village
- Paris Extended Port Stay

CRUISE RATES

Cat E - Haydn Deck	\$5395 pp dbl*	\$5195 pp dbl with BD**	+\$1400 single
Cat D - Haydn Deck	\$5995 pp dbl*	\$5795 pp dbl with BD**	+\$1400 single
Cat C - Strauss Deck	\$6195 pp dbl*	\$5995 pp dbl with BD**	+\$1800 single
Cat B - Strauss Deck	\$6395 pp dbl*	\$6195 pp dbl with BD**	+\$1800 single
Cat A - Mozart Deck	\$6595 pp dbl*	\$6395 pp dbl with BD**	+\$2200 single
Suite - Mozart Deck	\$7095 pp dbl*	\$6895 pp dbl with BD**	+\$2600 single

*Regular Rate or **Save \$200 per person/\$400 per couple with Booking Discount Rates (BD)

STATEROOMS & SUITES



STATEROOMS (162 Sq Ft)

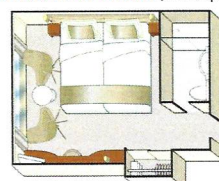
Staterooms feature 2 twin beds that can be separated or put together, flat screen TV, hair dryer, private bath with shower, closet, phone, desk, chair & safe. Floor to ceiling sliding glass doors with French Balcony on Mozart & Strauss Decks.



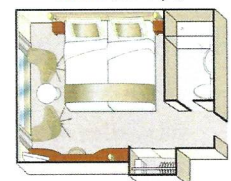
SUITE - FRENCH BALCONY (237 Sq Ft)

Suites are on the Mozart Deck & feature floor to ceiling sliding glass doors with French Balcony, 2 twin beds that can be separated or put together, flat screen TV, hair dryer, private bath with shower & bathtub, phone, closet, desk, chair, safe, bathrobe & mini-bar. (Suite size and amenities can vary)

STANDARD CABIN (162 sq ft)



SUITE (237 sq ft)



Reservation Form (River Cruise)

Contact Information/Mail Reservation Form to:

Normandy, Paris & Seine Cruise

Vacays by Mindy • Attn: Mindy Eveler

April 16, 2024

5172 Church Road

Booking #172252 (Web Code)

Felton, PA 17322

717.855.2135 • Mindy@Vacaysbymindy.com

Cabin Category Requested: (All Cabin Categories are on a space available basis)

Cat E: Cat D: Cat C: Cat B: Cat A: Suite:

Enclosed please find a deposit in the amount of \$ _____ (\$600 per person) to secure reservations for _____ # of people.

Premier's Travel Protection Plan (TPP): Yes, I (we) wish to purchase travel protection (TPP)
 (TPP must be purchased with initial deposit)
 No, I (we) decline travel protection (TPP)

Enclosed please find payment in the amount of \$ _____ (\$499 per person) to secure the Premier's Travel Protection Plan (TPP).

I / we want to purchase the Post London Extension*** (\$925 pp dbl/+\$450 SS) Yes No
 ***Please book London Ext with initial deposit.

TOTAL PAYMENT \$ _____ Make checks payable to: PREMIER WORLD DISCOVERY

GATEWAY AIRPORT _____ ROOMMATE'S GATEWAY AIRPORT _____

see flyer for included group gateway airport/departure city, additional charges apply for other airport packages

To avoid change fees, submit Passport names (first/mid/last) exactly as they appear on Passports

Passport Name: _____

DOB (MM/DD/YY) _____ Gender M F

Passport #: _____ Exp Date (MM/DD/YY) _____

Country of Issuance _____

Roommate's Passport Name: _____

DOB (MM/DD/YY) _____ Gender M F

Roommate's Passport #: _____ Exp Date (MM/DD/YY) _____

Country of Issuance _____

Street Address _____ Check if Roommate's address is the same

City _____ State _____ ZIP _____

Email address _____

MobilePhone# _____

Emergency Contact/Tel# _____

Notes or TSA/KTN #: _____



Cardholder Name (If paying by credit card) _____

Credit Card # _____ Exp Date: _____

CVV# _____ Amount to be charged \$ _____

Credit Card Billing Address: Check if address is the same as above

Address _____ City _____

State _____ ZIP _____ Tel# _____

Sign _____ Date _____

SIGNATURE REQUIRED (for credit card use & acceptance of terms*)

*I (We) agree to pay according to the credit card issuer agreement. I understand and accept the

DEPOSIT & FINAL PAYMENT

An Initial Deposit of \$600 per person is due with Reservation Form to secure reservations. Final Payment Due Date is 90 days prior to departure.

***BOOKING DISCOUNT**

Make your Final Payment by check prior to the Final Payment Due Date & receive \$400 per couple/\$200 per person Booking Discount!

- Initial Deposit can be made by check or credit card to be eligible.
- Payments after Initial Deposit are part of Final Payment & must be made by check.

ONLINE BOOKING OPTION

Save time, postage & secure your seat for this group departure. Simply type: <https://res.premierworlddiscovery.com> into your web browser & use the Booking Number (Web Code) from this flyer to make your Deposit online in just a few minutes. No need to submit a Reservation Form if booking online.

PREMIER'S TRAVEL PROTECTION PLAN (TPP) \$499 per person

(must purchase with Initial Deposit)

Part A – Cancellation Waiver provided by PWD

I. Trip Cancellation Waiver (TCW) - Guarantees full refund on all payments, except the Trip Cancellation Waiver Fee itself in case of cancellation up to the time and date of departure due to the passenger's personal illness or death of an immediate family member. Medical/official documentation required.

II. Premier "Any Reason" Cancellation Waiver (ARCW) - Reimburses 75% of the cancellation fees in the form of a future travel credit certificate (FTCC) valid for 1 year, if you cancel more than 48 hours prior to scheduled departure for any reason not eligible for cash refund under the TCW (Part A - I.). FTCC is non-transferable, may not be redeemed for cash and does not include any credit for the Trip Cancellation Waiver Fee. The Trip Cancellation Waiver Fee must be paid for with Initial Deposit and is refundable until 180 days prior to departure. The Trip Cancellation Waiver does not cover any single supplement charges due to an individual's traveling companion canceling prior to departure. The Trip Cancellation Waiver is non-transferable and valid for each applicant only. The Trip Cancellation Waiver does not cover any services such as airline tickets not purchased through PWD. Cancellations, Refunds & Inquiries under Part A will be handled by PWD. Certain Exclusions and Restrictions apply.

Part B – Post Departure Travel Protection Plan* provided by USI

Includes coverage for: Trip Interruption (\$1,000); Trip Delay (\$100/Day-Max \$500); Baggage & Personal Effects (\$2,000); Baggage Delay (\$500); Emergency Accident/Sickness Medical Expense- excess coverage (\$30,000); Emergency Evacuation/Repatriation (\$150,000); Accidental Death & Dismemberment (\$25,000); Non-Insurance and Emergency Travel Assistance Services** (24/7). Claims & Inquiries under Part B will be administered by USI.

For full Part A and Part B plan details visit: premierworlddiscovery.com/TPP All Benefits described on this page are for general information basis only. There are certain restrictions, exclusions and limitation that apply to all insurance coverages. Plan benefits, limits and provisions may vary by state jurisdiction.

CANCELLATION FEES

- Cancellations are subject to the following per person fees;
- Cancel 180 days prior to departure: \$200 pp is retained
 - Cancel 179-90 days prior to departure: Deposit or TPP** is retained
 - Cancel 89-60 days prior to departure: 50% of total price
 - Cancel 59-30 days prior to departure: 75% of total price
 - Cancel 29 days or less prior to departure/no shows: No refunds

**If TPP purchased

RESPONSIBILITY

Premier World Tours LLC dba Premier World Discovery (hereafter PWD), whose vouchers are used by respective agents for the passenger in all matters pertaining to hotel accommodations, sightseeing tours and transportation, hold themselves free of responsibility for any damages occasioned from any cause whatsoever. PWD will not be responsible for any damages or inconvenience caused by late arrivals, departures and change of schedule or other conditions nor will they be responsible for any act, omission, or event during the time the passenger is not on board their conveyance. The passage contract in use by the airline concerned, when issued, shall constitute the sole contract between the airline and the purchaser of this tour/cruise, and/or passenger. PWD does not hold any responsibility for the conduct of any of its members, hotel, motorcoach, cruiseline, train, airline or other personnel. PWD reserves the right to decline to accept or retain any person as a member of a tour/cruise at its discretion. PWD &/or its Tour Director retain the right to require any participant to withdraw from a tour/cruise at any time, if determined to be in the best interests of health, safety & general welfare of the tour/cruise group or of the individual participant. Arbitration - I/We agree, any and all disputes concerning this contract or any other material concerning the trip, or the trip itself must be resolved exclusively pursuant to binding arbitration in the state of California, pursuant to the then current rules of the American Arbitration Association. Payment of the deposit for this tour/cruise constitutes acceptance of these terms and conditions. CST #2048841-40

IMPORTANT CONDITIONS/NOTES

- A valid US passport is required for this tour and is the responsibility of each passenger. Passports should be valid for up to six (6) months beyond the travel dates. All names must be submitted to Premier exactly as they appear on passenger passports.
- Itinerary and hotels are subject to change.

AIR NOTE

Air Schedules may not be available until Final Trip Documentation is received. Air seats are assigned by the airline and sometimes not assigned until the day of travel. Air seat changes can only be attempted upon receipt of e-tickets and Final Trip Documentation at which time availability may be limited. If specific seat assignments or airline choice is extremely important to your reservation, we recommend you book land only and make your own air reservations. Please make this adjustment to land only/own air at time of tour reservation.

