

EVERMORE  
*adoption consultants*



# Hello

## WELCOME TO EVERMORE ADOPTION CONSULTANTS

Adoption consultants are new to the adoption world. Many times, adoption consultants are made up of adoptive parents who are frustrated with the adoption process and want to make a change. Starting Evermore Adoption Consultants was something that I felt was a need. Being a birthmother myself, I felt led to do something. After the birth of my son, I worked for a law firm as a family law paralegal handling the legal side of adoptions in Florida. When the opportunity to be more hands-on with adoptive families presented itself, I said yes as fast as I could. Moving into a Director position at a local agency working with families and expectant mothers opened my eyes to a world that was so unknown. I decided that there was a need for someone to educate these families who are on their journey to adoption.

Every day we learn something new. We take our knowledge and put it in perspective to adoptive families in a way that will help them understand the ins and outs of the adoption process. Educating and supporting each family is our passion. I am thrilled that you want to learn more about Evermore and our team. If there is ever a time that you have any questions, please feel free to reach out to us.

LOVE,

*Kristin*

"EDUCATED FAMILIES CREATE HEALTHIER ADOPTIONS  
AND AN OVERALL BETTER EXPERIENCE. FOR EVERYONE."



## fun facts

I'M A BIRTH MOM,  
I PLACED IN 2007

I'M OBSESSED WITH FINDING  
THE BEST DESSERT PLACES  
AROUND THE US THAT WILL SHIP

EVERYONE SAYS,  
I AM THE BEST GIFT GIVER

CAFFINE IS LIFE

# Hi, I'm Kristin!

GREEN COVE SPRINGS, FLORIDA

I'm the Founder of Evermore and I truly love what I do every day. It is a goal of mine to make a difference in the adoption world, starting with each family that we work with. When I finally take a break, I love spending time with my littles who are 10 years apart. My oldest has already left the nest and my youngest has my days filled with volleyball and tumbling practices or games.





“WORKING WITH **KRISTIN** AT EVERMORE WAS HANDS DOWN ONE OF THE BEST PARTS OF OUR ENTIRE ADOPTION JOURNEY. AFTER BEING MISLED WITH OUR AGENCY FOR NINE MONTHS, SHE WAS TRULY A BREATH OF FRESH AIR; SHE GAVE US MUCH-NEEDED HOPE IN THE PROCESS. SHE NEVER MISSED A CALL OR E-MAIL AND ALWAYS MADE SURE EVERY SINGLE QUESTION WAS ANSWERED. WE KNOW OUR LITTLE GUY WOULDN'T BE IN OUR ARMS IF WE HADN'T SIGNED ON WITH EVERMORE.” - **BRI R**, COLORADO



# Hey, I'm Brittany!

GREEN COVE SPRINGS, FLORIDA

I'm Kristin's right hand at Evermore. I am a military wife married to Ryan for over 13 years. I'm also a mama to Konlin, Kanner, Kadley and Kaliah. Adoption is a huge part of our story and something I am passionate about. Getting to wake up every morning and help families with their adoption is a dream come true! In my free time, we love to go out on the boat or go camping.

*my favorites*

ADOPTION + FOSTER CARE

BEACHES + BOATING

HUNTING + FISHING

JESUS + FAITH



“EVERMORE WAS ONE OF THE GREATEST BLESSINGS ON OUR JOURNEY. WE WALKED THROUGH AN AWFUL DISRUPTION AND NEEDED A FRESH START. FROM THE FIRST CALL WITH **BRITTANY**, WE KNEW THEY WERE PERFECT FOR US. BRITTANY AND KRISTIN WALKED WITH US EVERY STEP OF THE WAY AND EVENTUALLY LED US TO OUR SON, EVEREST. OUR HIGHEST POINT. WE HAVE ZERO COMPLAINTS AND RECOMMEND EVERMORE TO EVERYONE!” - **BROOKE N**, NORTH CAROLINA



EACH CLIENT THAT SIGNS ON WITH US IS SO MUCH MORE THAN A CLIENT. THEY BECOME PART OF OUR EVERMORE FAMILY. WE ARE DEDICATED TO HELPING EACH FAMILY THAT SIGNS ON WITH US DURING THEIR ADOPTION JOURNEY.



# *This is jenna*

JACKSONVILLE, FLORIDA

LUNA DESIGN CO.

Jenna is a wife, a mama to a sweet little princess, and an amazing part of our team. If you're an Evermore family, you will work very close with her creating your perfect family profile book. Jenna really tries to capture each families vision for that first impression with birth mamas.





full service consultants

WE ARE ALSO NOT FACILITATORS, WE NEVER WORK WITH MAMAS, WE ARE NEVER INVOLVED IN THE "MATCH" AND WE NEVER EXCEPT A MATCH FEE.

Here at Evermore, we are full-service consultants, we are not referral-based. This means that we are going to work closely with each waiting family. We do not encourage or force families to sign on with many professionals just to "get them off our list". We will always provide education and direction while we continue to uphold the Evermore standard while signed up directly with other professionals.

BELOW YOU WILL FIND A FEW OF THE MANY THINGS WE OFFER FOR OUR FAMILIES.

- HOME STUDY ASSISTANCE & REVIEW
- CUSTOM DESIGN PROFILE BOOK WITH OUR SISTER DESIGN COMPANY
- REVIEW OF PREFERENCES & EDUCATION ON MAKING THEM
- REALISTIC BUDGET EXPECTATIONS
- PARTNERSHIP WITH FLORIDA BASED CREDIT UNION FOR ONLY EVERMORE FAMILIES OFFERING A LINE OF CREDIT UP TO 120 MONTHS
- GRANT WRITING ASSISTANCE
- FUNDRAISER IDEA PACKET & HELP
- MONTHLY NEWSLETTERS
- MONTHLY WEBINAR EDUCATION
- PROVIDING WAITING FAMILIES EXPECTANT MOTHER CASES
- PROVIDING ASSISTANCE AND EDUCATION DURING MATCHED TIME
- SUPPORT THROUGH FINALIZATION & BEYOND

Not all adoptive families are on the same journey, this is why we have two different packages that we offer. Our 'In This Together' package is more hand-holding for families who are navigating this journey for the very first time. Our 'Fresh Start' package is a little less hand-holding. This is for a family who may be adopting for the second time or has been waiting with another adoption professional for quite some time and is wanting a fresh start with Evermore.



A BIRTH MAMA AND AN ADOPTIVE MAMA WORKING SIDE BY SIDE TO MAKE A DIFFERENCE IN EACH ADOPTION JOURNEY.



I have had the pleasure of working with **Kristin** and **Brittany** since the company was formed. They are incredibly knowledgeable, ethical and hard working. Their experience and dedication to the adoptive families they work with is unmatched in our industry. I recommend them highly and without reservation. The best of the best! - Mary K. Wimsett, Esquire





*what they are saying about us*

- “They both find your agency to be compassionate and caring and they absolutely felt connected to your consulting agency. Thank you for what you do!”  
– Adoption Assistance TN + KY
- “I’m so grateful for you both. Grateful for the education, the coaching, the communication, the love, but most of all for connecting us with Rueben. Our home has never felt so incredibly happy! My family is so in love. I feel like there are so few people you can trust in the adoption world and I’m so glad I just happened to see someone’s adoption story mentioning Evermore.” – Greene Family
- “Evermore is by far our favorite consultant group that we’ve talked to. We value your diverse perspectives, focus on education and ethics, and dedication to hopeful adoptive families. We would be honored to be your clients and have you by our side as we start our adoption journey.” – Melissa L
- “We have listened to all the webinars and I just have to say that you (Brittany) and Kristin are a breath of fresh air after what we just walked away from. Your genuine care and honesty really shine through and I am beyond grateful we were sent your way. I knew this would be a good fit for us but those webinars truly confirmed it for me.” – M Family
- “We used a couple of consultant groups but ended up matching through an agency where we had a failed match prior. Evermore was amazing from all the support, love, information and guidance through everything. Nothing beats the experience they bring to the table to help guide you through the adoption maze.” – Katie C
- “When I signed on with Evermore in February 2021, I had lost my hope in the possibility of becoming a single mama by choice through adoption. After speaking with Brittany on the phone, I knew it felt just right and I signed on that day! From that moment on, everything felt possible. I learned a ton through their education, raised funds in ways I would not have imagined and was supported through every moment. I remember Kristin and Brittany telling me it would all make sense once I am holding my sweet baby and IT DOES! I am forever grateful for Evermore. I am grateful for their support, guidance and encouragement along the way. I waited 2 years before signing on with Evermore and was matched in 5 months with them. Community, education and support through adoption is something that they offer and that is priceless to me.” - Annie S



# EVERMORE

AN OPEN LETTER TO ADOPTION  
FAMILIES, AGENCIES AND ATTORNEYS

## *Striving to be set apart*

Adoption can be such a beautiful thing, but it is beautifully broken. The journey to adopting can get very messy and unethical. Here at Evermore, we strive to be set apart as adoption professionals.

### WE PRIDE OURSELVES ON TRANSPARENCY AND ETHICS

We each come from different sides of the adoption triad and know how each person involved in adoption plays a part. We spend time educating each family on the importance of just that.

At Evermore we value open adoption and teaching each family what that looks like.

When choosing to work with Evermore, you can always know that we are here to help make your day easier. We work directly with each family, agency, and attorney so that everyone has realistic expectations. This allows everyone to focus on what is important, expectant mama + baby.

A few of the ways we do this is by providing each family with a custom-designed profile book, an abundant amount of adoption education, home study assistance and review, and we review each expectant mom case with them. We are here to answer questions that each family has during their journey, which we know sometimes can be a lot. When a family says "YES" to being presented, know they are fully prepared to be chosen and to move forward with you and the mama you're working with.

*Kristin & Brittany*





# fun facts

Evermore's primary location is Green Cove Springs, Florida, and everyone is local. We love that we all get to meet in the office on a regular basis.

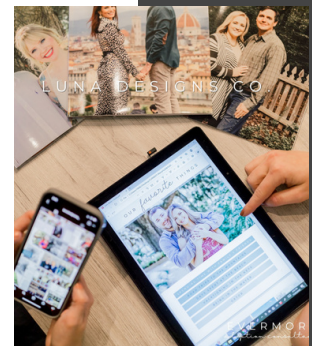
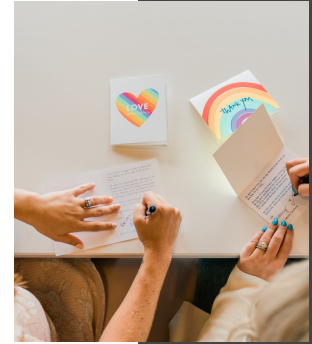
We only work with licensed placement agencies and certified attorneys across the U.S. and we are always grateful for everything that they do – without them, we could not be us.

Every chance we get, we travel to new cities to meet professionals and families that we are working with.

All of our packages come with a professionally made profile book. With Luna Designs, we have an editor and a graphic designer on staff and we have the ability to print. This service is only available to Evermore clients.

Kristin was encouraged to start Evermore by Jenny, a former client, when she was with an agency. The impact and education that she said Kristin provided on open adoption far exceeded expectations. Jenny continues to live by the promise of maintaining an open relationship and is the one who suggested the name Evermore Adoption Consultants.

FAMILY IS FOR  
*evermore*





For now  
UNTIL WE TALK AGAIN

We know that your time is valuable and we want to thank you from the bottom of our hearts for taking the time to learn more about us.

We look forward to building a relationship with you and working together to make a difference in the world of adoption.

We are always making education our primary goal so that we can provide families with love and guidance during their adoption journey. Attending adoption conferences and group webinars hosted by the Florida Adoption Council and other professionals will continue to be an important part of Evermore. This allows us to send fully educated and prepared families to agencies and attorneys across the U.S. to be presented to mama's they are working with. Adoption professionals always know there is a standard with Evermore families that sets them apart and their promises will never be broken to an expectant mama post-placement.

PLEASE FEEL FREE TO REACH OUT TO  
US ANYTIME WITH QUESTIONS.

LOVE,

Kristin + Brittany

A photograph of two women standing outdoors, holding hands. They are wearing matching beige long-sleeved tops and black skirts. They are positioned in front of a large, light-colored building with a grid-like facade. A palm tree is visible in the background above the building. The scene is framed by a white border.

WE ARE EXCITED TO WORK WITH YOU

*Luna*  
DESIGNS CO.

MADE WITH LOVE BY

+

EVERMORE  
*adoption consultants*

