

9to5[®]
s e a t i n g



9to5 Seating commits to think & act green

9to5 Seating is committed to sustainable and environmentally responsible business practices. This global perspective is endorsed and executed throughout every aspect of our corporate culture, and within our warehousing, manufacturing and office facilities. We are proud to demonstrate our commitment by offering GREENGUARD Certified products, participating in the U.S. Environmental Protection Agency's WasteWise Program, and have been awarded the prestigious LEED® NC Gold Certification for our corporate headquarters facility.



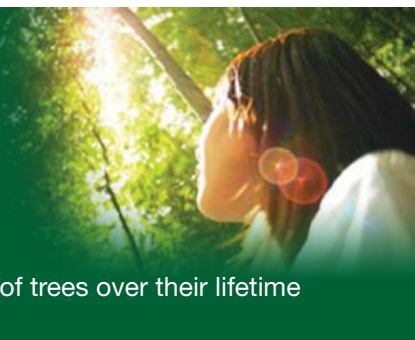
Environmental commitment in action

9to5 Seating's corporate headquarters uses a rooftop photovoltaic panel system to generate electricity for the facility.

Over 30 years, the system will offset:

- 6,102,370 lbs of CO₂ - a leading cause of global climate change
- 4,192 lbs of NO₂ - a leading cause of smog
- 1,048 lbs of SO₂ - a leading cause of acid rain
- 1,215 lbs of particulates - a leading cause of asthma

6,102,370 lbs of CO₂ is equivalent to the amount absorbed by 13 acres of trees over their lifetime



Thinking and acting green

Planet friendly

Green Statement

9to5 Seating is cognizant of the dire consequences of irresponsible manufacturing processes and mistreatment of the earth's resources. We are proactive and resolute in **Reducing, Recycling and Reusing** manufacturing-related materials. It is a global perspective endorsed and executed within our local corporate culture, and one that permeates throughout our warehousing, manufacturing and office facilities.



Preserving Resources,
Preventing Waste

9to5 Seating is a member of the U.S. Environmental Protection Agency's WasteWise Program established to eliminate costly municipal solid waste and select industrial wastes, benefiting the environment. This organization is designed for companies committed to reducing the amount and/or toxicity of waste requiring disposal. WasteWise promotes waste prevention, recycling, composting and purchase/manufacture of goods that have recycled content or produce less waste. It is an integral part of our corporate philosophy to provide the right equipment and education to our employees with regard to environment preserving activities. This ideology drives our endless commitment to a sustainable future.

GREENGUARD Gold Certified

Our entire product line earned GREENGUARD Gold Indoor Air Quality Certification issued by the GREENGUARD Environmental Institute. The GREENGUARD Indoor Air Quality Certification Program assures that products designed for use in office environments and other indoor spaces meet strict chemical emissions limits.

9to5 Seating products:

- Contribute to healthier interior environments.
- Add points for LEED Certification.
- Manufactured using plastic, nylon, steel, aluminum and polypropylene components that are 100% recyclable.
- Use suppliers that share an earth-friendly philosophy.
- Certified below chemical emissions limits for TVOC, Formaldehyde, Total Aldehydes, Individual VOCs, 4-phenylcyclohexene.

Environmental Data Sheets for all 9to5 Seating products can be found at our web site www.9to5seating.com.





a. 2190-Y3-A37-BA10P b. 2170-Y2-A37_BA10P
c. 2168-Y1-A36 d. 2160-Y2-A37

Premium mesh for seats and backs in eleven colors provide a durable yet breathable experience

Three control options and optional seat slider available to fit any ergonomic need or work environment

Attractive optional bases include Black, Silver or Polished cast aluminum bases



Subtle but effective lumbar support follows the form of the human body and includes an adjustable height ratchet back

Fixed loop arms, six-way or eight-way adjustable T-arms for general office, stools and management chair models

Upholstered seat model offers another level of ergonomic comfort and styling

Shown: 2170-Y2-A37-BA10P

Features

- Backrest is height adjustable for complete ergonomic comfort
- Organic meets stylish and elegant design with breathable premium mesh or optional upholstered seat options
- Three Synchro-tilt control options with A10 fixed loop arm, A36 six-way or A37 eight-way adjustable arms
- See materials section for upholstery choices
- Lifetime warranty on structural and mechanical components

Quick Ship

Express fabrics and M1 mesh to ship as fast as 5 business days.

Control Availability

	Y1	Y2	Y3
2160/2180	•	•	•
2170/2190	•	•	•
2166/2168	•		
2176/2178	•		
2186/2188	•		
2196/2198	•		



2160 GUEST



2170 MID-BACK



2190 HIGH-BACK

Organic design adds versatile padding.

cydia upholstered



a.



b.



c.

a. 3310-K3-A35-BF-US-LB b. 3310-K3-A35-WF-UP
c. 3310-K3-A34-GF-US

Premium mesh for seats and backs in 11 colors

Optional lumbar offers subtle but effective support following the form of the human body

Three frame colors in Black, Gray and White

Choice of controls include Swivel-tilt and Knee-tilt tailored to Cydia's design

Attractive optional bases include Black, Silver or Polished cast aluminum bases



Upgrade to an upholstered back option for added style and comfort on stools and management chair models

Fixed loop arms or six-way adjustable T-arms for general office, stools and management chair models

Optional upholstered seat offers another level of ergonomic comfort on stools and management chair models

Durable high profile bases offer choices for either casters or Stationary Base Glides

Quick Ship

Express fabrics ship as fast as 5 business days.

Shown: 3310-K3-A35-BF-US-LB

Features

- Nature's influence is the foundation of Cydia's design inspired from the shape of a butterfly's wings
- Organic meets light and elegant design with breathable premium mesh and now available with upholstered seat and/or back options
- Swivel-tilt and Knee-tilt control with A34 fixed loop arm or A35 six-way adjustable arms promote ergonomic comfort
- See materials section for upholstery choices
- Lifetime warranty on structural and mechanical components

Control Availability

	S3	K3
3300	•	•
3306	•	
3308	•	
3310	•	•



3310-US FULL-SIZE



3310-UP FULL-SIZE



3310-US FULL-SIZE



a.



d.



b.



c.

a. 3315-LG-A34-BF + 3316-OT-BF b. 3300-S3-A34-GF-G1
c. 3308-S3-A00-WF d. 3310-K3-A35-WF

Premium mesh for seats and backs in 11 colors

Optional lumbar offers subtle but effective support following the form of the human body

Choice of controls include Swivel-tilt and Knee-tilt tailored to Cydia's design

Optional cast aluminum bases available in Black, Silver or Polished



Fixed loop arms or six-way adjustable T-arms for general office, stools and management chair models

Three frame colors in Black, Gray and White

Durable high profile bases offer choices for either casters or Stationary Base Glides

Shown: 3310-K3-A35-WF-LB

Features

- Nature's influence is the foundation of Cydia's design inspired from the shape of a butterfly's wings
- Organic meets light and elegant design with breathable premium mesh, upholstered seat and/or back is an option
- Swivel-tilt and Knee-tilt control with A34 fixed loop arm or A35 six-way adjustable arms promote ergonomic comfort
- See materials section for upholstery choices
- Lifetime warranty on structural and mechanical components

Quick Ship

Express fabrics ship as fast as 5 business days.

Control Availability

	S3	K3
3300	•	•
3306	•	
3308	•	
3310	•	•



3300 MID-SIZE GUEST



3300 MID-SIZE



3310 FULL-SIZE



a. 3080-X1-A30-PF b. 3065-X1-A30-PF c. 3085-X1-A30-PF



High-grade mesh over frame creating ergonomic lower back support available in three colors

Standard synchro-tilt control features fingertip adjustments

Integrated seat slider as standard feature

75mm heavy duty hard floor casters standard

Shown: 3080-X1-A30-PF-M11

Six-way adjustable ergonomic arms with fingertip controls available

Choice of mesh or upholstered seat

Seat forward tilt adjustment mechanism

Attractive cast aluminum high profile base



3065 MID-BACK



3065 MID-BACK



3080 HIGH-BACK

Quick Ship
Express fabrics ship as fast as 5 business days.

Features

- Standard with a synchro-tilt control which provides simple, intuitive ergonomic support and comfort
- Standard two position seat tilt
- Three frame finishes: Polished (PF), Black (BF) or Silver (SF)
- Three mesh colors: Black (M11), Gray (M12) or Silver (M13)
- See materials section for upholstery choices
- Stools available with either high or low seat height
- Lifetime warranty on structural and mechanical components



a. 1880-Y4-A00-M24 b. 1880-Y4-A6-BA10P-M23
c. 1860-Y1-A40-M21-LB d. 1885-Y4-A40-M24-LB

Integrated handle in backrest makes moving Aria a cinch

Cool and comfortable, this sleek and supportive mesh is available in eight designer colors

Select from five ergonomically-adjustable arm options or armless

Suspension seat is a unique environmentally friendly design



Adjustable lumbar support (optional)

Three synchro-tilt controls are matched to each models' design

Durable black nylon base is standard or upgrade to cast aluminum in black, silver or polished.

Shown: 1880-Y4-A40-BA10P-M25

Features

- Aria is the answer where new ways of working require new features in seating
- Suspension seat incorporates a flexible high-performance mesh with a molded high-density foam overlay and zero plywood; formaldehyde-free construction.
- Upholstery choices include woven goods, vinyls and leather; see materials section for mesh and upholstery choices
- Standard synchro-tilt controls: mid-back versions offer the Y1 and Y3; high-back models feature the intensive Y4 control with seat slider
- Lifetime warranty on structural and mechanical components

Quick Ship

Express fabrics ship as fast as 5 business days.

Control Availability

	Y1	Y3	Y4
1860	•	•	
1866	•		
1868	•		
1880			•
1885			•



1860 GUEST



1860 MID-BACK



1880 HIGH-BACK



a. 1460-Y3-A40-M22 b. 1466-Y1-A00-M27
c. 1460-K2-A40-M28 d. 1480-Y3-A40-M24

Select from six ergonomically adjustable arm options or armless

Choice of three control options

K2 enhanced knee-tilt synchro control with side tension adjustment. Other features include three locking positions and a safety release lever

Durable black nylon base for a long, trouble-free service life



Choose from eight colors for mesh back

Ratchet back height adjustment, a first for a mesh back design, offers users the ability to raise or lower the backrest for the greatest comfort

Seat slider standard on all models

Shown: 1460-K2-A40-M28

Features

- Vault's features allow users to personalize the comfort of their chairs
- High quality, woven tension mesh conforms to the user's back, following every move with support, including the lumbar region
- Backrest is height adjustable
- Enhanced K2 knee-tilt or two synchro controls with adjustable seat depth are available
- Stools available with either high or low seat height
- Lifetime warranty on structural and mechanical components

Quick Ship

Express fabrics ship as fast as 5 business days.

Control Availability

	Y1	Y3	K2
1460	•	•	•
1466	•		
1468	•		
1480	•	•	•



1460 RATCHET-BACK



1460 RATCHET-BACK



1460 RATCHET-BACK



a.



b.



c.

a. 1536-Y1-A8B-BF-KIT-FST8 b. 1575-Y2-A9B-BF c. 1565-Y2-A8S-SF



1535 MID-BACK



1590 HIGH-BACK



1575 MID-BACK

Quick Ship
M01 Mesh ships as fast as 5 business days.

Features

- Strata All Mesh is great for managerial and executive offices
- Simple Synchro control locks back in upright position or allows it to free float
- Heavy duty synchro-tilt control features a 2:1 back-to-seat tilt ratio with four position lock
- Waterfall seat front promotes circulation and good health
- High quality, woven tension mesh offers superior lumbar support and breathability in both seat and back
- Lifetime warranty on structural and mechanical components

Control Availability

	Y1	Y2
1535/1537	•	
1537/1595	•	
1570/1575	•	
1590/1595	•	
1536/1538	•	
1571/1576	•	
1573/1578	•	



b.



c.

a. 1545-Y1-A8B-BF b. 1566-Y2-A6-BF-BA2P c. 1560-Y2-A8S-SF

Optional headrest (field installable)

Adjustable lumbar support allows control of height and depth

Two synchro-tilt control options

Shown: 1585-Y2-A6-BF



Mesh back provides continuous support over entire back while seated

Silver or black adjustable arms and base available

Standard cast aluminum spider base with Y2 control

Features

- Strata is a great choice for managerial and executive offices
- Simple Synchro control locks back in upright position or allows it to free float
- Heavy duty synchro-tilt control features a 2:1 back-to-seat tilt ratio with four position lock
- Waterfall seat front promotes circulation and good health
- High quality, woven tension mesh offers better lumbar support
- Lifetime warranty on structural and mechanical components

Quick Ship

Express fabrics ship as fast as 5 business days.

Control Availability

	Y1	Y2
1545/1555	•	
1546/1548	•	
1560/1565		•
1561/1563		•
1566/1568		•
1580/1585		•



1566 STOOL



1585 HIGH-BACK



1545 MID-BACK



a.



b.



c.

a. 2060-M1-A2-LB b. 2070-M1-A8S-BA10S c. 2060-Y3-A8B-LB



Shown: 2070-M1-A8S-BA10S

Features

- Brio offers advanced styling and sensible value
- Five control options to ensure a fit to every application
- Optional LB adjustable lumbar pad offers targeted lower lumbar support for all users
- Reverse seat slider adjustment standard for petite seat
- Active upper back moves with the user's shoulders
- Lifetime warranty on structural and mechanical components

Quick Ship

Express fabrics ship as fast as 5 business days.

Control Availability

	Y1	Y3	M1	P1	G1
2060/2070	•	•	•		•
2066/2076				•	•
2068/2078				•	•



2060 MID-BACK



2066 STOOL



2070 MID-BACK



a. 2366-P1-A8B



b.



c.

Detailed stitching and craftsmanship

Optional seat slider

Five control options

Attractive high profile nylon base

Shown: 2380-S2-A8S-BA10S



Ratchet back height adjustment

Plush high resilient molded foam seat and back

Six arm options

Features

- Bristol has both fixed and adjustable tasking arm options
- Waterfall seat front promotes circulation and good health
- High resilient molded foam seat and back
- Lifetime warranty on structural and mechanical components

Quick Ship

Express fabrics ship as fast as 5 business days.

Control Availability

	S2	Y2	R1	M1	P1
2360	•	•	•	•	
2380	•	•	•	•	
2366					•
2368					•



2360 MID-BACK



2380 HIGH-BACK



2380 HIGH-BACK



a.



c.



b.



d.

a. 2900-S2-A16-BA9 b. 2910-Y2-A19
c. 2900-M1-A19 d. 2910-M1-A19

Plush padding on seat and back built from 4" of high resilient molded foam

Available with swivel-tilt, synchro-tilt or multi-function controls

Polished aluminum accented casters standard

Shown: 2910-Y2-A19



Top-grain leather upholstery or extensive fabric selections

Choose from six arm options

Ergonomically sculpted seat and back cushions

Attractive cast aluminum base

Features

- Upholstered in either fabric or leather
- Attractive sled base guest chair option
- Choose armless, fixed arms in polished aluminum or black polyurethane, or Ura-soft® adjustable arms
- Lifetime warranty on structural and mechanical components

Quick Ship

Express fabrics ship as fast as 5 business days.

Control Availability

	S2	Y2	M1
2900	•	•	•
2910	•	•	•



2900 GUEST



2900 MID-BACK



2910 HIGH-BACK



a.



c.



d.

a. 2600-S1-A8 b. 2600-K1-A16 c. 2600-GT-A16 d. 2600-S1-A16P-BA2S

Padded leather pillowcase surface

Waterfall seat front promotes circulation and good health

Available with knee-tilt or swivel-tilt controls

Shown: 2610-K1-A16



Detailed craftsmanship in upholstery with top-grain leather or a wide selection of fabrics and vinyls

Choose from four arm options

Attractive spider base

Features

- Axis has a sleek pillowcase seat and back, upholstered in fine top-grain leather or an extensive selection of fabrics
- High resilient foam and one piece shell offer the user an ergonomic design with style and comfort
- See materials section for upholstery choices
- Lifetime warranty on structural and mechanical components

Quick Ship

Express fabrics ship as fast as 5 business days.

Control Availability

	S1	K2
2600	•	•
2610	•	•



2600 GUEST



2600 MID-BACK



2610 HIGH-BACK



a.



b.



c.

a. 2800-K1-A20 b. 2800-GT-A21 c. 2810-K1-A20

Subtle but effective lumbar support follows the form of the human body

Waterfall seat front promotes circulation and good health

Available with knee-tilt or swivel-tilt controls

Shown: 2800-S1-A20



Detailed craftsmanship in upholstery with top-grain leather or fabric

Choose polished aluminum or black powder coated armrests and bases

Attractive cast aluminum spider base

Features

- Cayman's slim profile and refined European style offers a fresh look to conference rooms or executive offices
- Wide selection of upholstery over high resilient molded foam and a one piece shell
- Lifetime warranty on structural and mechanical components

Quick Ship

Express fabrics ship as fast as 5 business days.

Control Availability

	S1	K1
2800	•	•
2810	•	•



2800 GUEST



2800 MID-BACK



2810 HIGH-BACK



a.



b.



c.

a. 3260-X2-A32-KB b. 3200-X2-A32-UB c. 3250-X2-A31-MB

- Upholstered High-Back features four-way adjustable headrest
- Subtle but effective lumbar support follows the form of the human body
- Seat forward tilt adjustment mechanism
- Integrated seat slider as standard feature
- Attractive cast aluminum high profile base



- Back styles include mesh, knit and leather
- Four-way adjustable armrest
- 65mm heavy duty casters standard

Shown: 3260-X2-A32-MB

Features

- Cosmo's slim profile and refined European style offers a fresh look to conference rooms or executive offices
- Upholstered backs create a transitional look while mesh and knit back options yield a contemporary style
- X2 synchro-tilt control with 11 position tilt lock and A32 two-way adjustable arms to achieve ergonomic comfort
- See materials section for upholstery choices
- Lifetime warranty on structural and mechanical components

Quick Ship

Express fabrics ship as fast as 5 business days.



3250 GUEST



3210 HIGH-BACK



3250 MID-BACK



a.



c.



b.

a. 1070-GT-CF-AP (stacked on DL3 cart) b. 1076-ST-CF-AP
c. 1060-GT-CF-AP



Features

- Kelley is available in 11 molded colors
- Matching armrest covers
- Chrome finish in sled style wire frame
- Wall saver legs prevent contact with walls
- High density, multipurpose stacker with optional dolly
- Stacks nine high on the floor and 33 high on optional cart which maintains clearance under 80" doorway
- Optional ganging clips available
- Lifetime warranty on structural components

Quick Ship
All eleven plastic colors ship as fast as 5 business days.



1060 GUEST



1076 STOOL



1070 GUEST



a. 1020-GT-BF-AP b. 1010-GT-CF-UP
c. 1010-GT-CF-AP (stacked on DL2 Dolly)

Flex back provides 15 degrees of movement for user comfort

Durable wire rod frame available in black or chrome finishes

Floor glides are a standard feature

Shown: 1020-GT-CF-US



Available with or without arms

250 lb weight capacity

Floor glides feature integrated ganging capability

Features

- Indy's ergonomic features and great style ensure visitors sit comfortably
- Three upholstery options: all plastic (AP), upholstered seat (US) or all upholstered (UP)
- AP models stack 33 chairs high with optional DL2 cart while maintaining clearance under an 80" doorway
- Indy ships standard with non-marring floor glides which feature integrated ganging clips for both arm-to-arm and armless-to-armless configurations
- Lifetime warranty on structural components
- Fabric and foam are warranted for five years

Quick Ship

Express fabrics ship as fast as 5 business days.



1020 WITH ARMS



1020 WITH ARMS



1010 ARMLESS



a. 1210-GT-A00-SF-AP b. 1210-GT-TLF-BF-AP-BRK
c. 1210-GT-A00-SF-AP

Soft touch polyurethane arms for comfort and durability

Available as a stool with either 27" or 30" seat height

Available with or without casters or with sled base

Shown: 1210-GT-A18B-SF-US



Available with or without arms

300 lb weight capacity

Integrated wall saver frame prevents rear legs and back from making contact with walls

Quick Ship

Express fabrics ship as fast as 5 business days.

Features

- Shuttle is available in 11 plastic colors
- Shuttle is available with either gray or black arms
- Shuttle is available with optional ganging clips for either arm-to-arm or armless-to-armless configurations
- All Shuttle models offer an optional book rack under the seat
- All Shuttle models can be configured with an optional tablet arm either left or right
- Lifetime warranty on structural components





b.



c.

Soft touch polyurethane arms for comfort and durability

Available as a stool with either 27" or 30" seat height

Available with or without casters or with sled base

Shown: 1210-GT-A18B-BF-UP



Available with or without arms

300 lb weight capacity

Integrated wall saver frame prevents rear legs and back from making contact with walls

Quick Ship

Express fabrics ship as fast as 5 business days.



1215 GUEST



1210 STOOL



1210 TABLET ARM

Features

- Available in fully upholstered or 11 plastic colors for seat and back
- Available with either gray or black arms
- All models offer 300 lb weight rating
- Model 1250 (Bariatric) has a 600 lb weight rating and 30" wide seat
- All models stack ten high with optional rolling dolly for easy storage (four high without optional cart)
- Standard non-marring floor glides protect floor surfaces (optional self-leveling glides are available)
- Lifetime warranty on structural components

a. 1210-GT-A00-BF-UP
b. 1250-GT-BF-UP c. 1210-GT-A18G-SF-UP



a. 1260-GT-A18B-SF-US
 b. 1280-GT-A18B-BF-AP c. 1260-ST1-A18G-SF-US

Soft touch polyurethane arms for comfort and durability

Available as a stool with either 27" or 30" seat height

Available with or without casters or with sled base

Shown: 1260-GT-A18G-SF-US



Available with or without arms

300 lb weight capacity

Integrated wall saver frame prevents rear legs and back from making contact with walls

Quick Ship

Express fabrics ship as fast as 5 business days.



1260 GUEST



1280 GUEST



1260 STOOL

Features

- Available in upholstered or 11 plastic colors for seat and 19 mesh colors for back
- Available with either gray or black arms
- All models offer 300 lb weight rating
- Four leg models stack ten high with optional rolling dolly for easy storage (four high without optional cart)
- Standard non-marring floor glides protect floor surfaces (optional self-leveling glides are available)
- Lifetime warranty on structural components



b.

c.

d.

a.

a. 1360-GT-A00-SF-US-M11-stacked b. 1370-nested
c. 1370-GT-A12-SF-US d. 1360-GT-A12-BF-US

Mesh back provides tailored lumbar support to each user

Available armless or choose from two arm options

250 lb weight capacity

Shown: 1375-B2-A12-BF-US-M12



Choose from three mesh colors

Two powder coated frame choices: Silver or Black

Attractive high arc nylon base on task and stool configurations

Features

- Bella Mesh offers a wide range of seating solutions
- Back available in three mesh colors: Black (M11), Gray (M12) or Silver (M13)
- All Bella Mesh models available armless (A00), with fixed arms (A12) or soft polyurethane padded arms (A14)
- Four leg Bella models can be configured with an optional right hand tablet arm
- Detachable basket available for four leg models
- Four leg models stack ten high and DL1 Dolly (four high without optional cart)
- Lifetime warranty on structural and mechanical components

Quick Ship

Express fabrics ship as fast as 5 business days.

Control Availability

	B2	S3
1375	•	•
1376	•	
1378	•	



1365 GUEST



1360 TABLET ARM



1378 STOOL



a. 1310-CT-TAB-A00-SF-US-BSK
 b. 1320-GT-A12-SF-AP c. 1310-GT-A14-BF-UP

Convenient handle built into every back for ease of mobility

Available armless or choose from two arm options

250 lb weight capacity

Wall saver back legs

Shown: 1310-GT-A12-SF-UP



Choose all plastic, upholstered seat with plastic back or fully upholstered

Two powder coated frame choices: Silver or Black

Attractive high arc nylon base on task and stool configurations

Features

- Bella offers a wide range of seating solutions
- Four leg models stack ten high for easy storage on DL1 Dolly
- Optional rolling dolly for easy storage of non-nesting models
- Convenient handle built into every back for ease of movement
- All Bella models available armless (A00), fixed arms (A12) or soft polyurethane padded arms (A14)
- Four leg Bella models can be configured with an optional right hand tablet arm
- Detachable basket available for four legged models
- Lifetime warranty on structural and mechanical components

Quick Ship
 Express fabrics ship as fast as 5 business days.

Control Availability

	B2	S3
1325	•	•
1326	•	
1328	•	
1335	•	
1336	•	
1338	•	



1325 TASK



1310 FOUR LEG



1326 STOOL



a.



c.



b.

a. 1410-GT-A15B-SF-UP b. 1410-GT-A15G-SF-UP c. 1415-GT-A15B-SF-PB

Back available in plastic, mesh or upholstered in fabric

Soft touch polyurethane arms for comfort and durability

Available with or without casters

Shown: 1410-GT-A15B-BF-MB



Available with or without arms

300 lb weight capacity

Silver or black powder coated frame

3 inch molded foam seat

Wall Saver rear legs

Quick Ship

Express fabrics ship as fast as 5 business days.



1410 GUEST



1415 GUEST (CASTERS)



1410 GUEST

Features

- Link comes standard with non-marring floor glides to protect floor surfaces
- Molded foam seat
- Model 1415 ships standard with 50mm carpet casters
- Convex back design provides lumbar support
- Anti-tip frame design with wall saver rear legs on model 1410 - prevents back from touching walls
- Stacks four high
- Lifetime warranty on structural components
- Fabric and foam are warranted against wear through and deterioration for five years



Ratchet back height adjustment 4" and fully upholstered back

5" thick high resilient molded foam seat is 25" wide

Heavy duty multifunction mechanism with seat slider

Shown: 1790-A5HD



23.5" back width high resilient molded foam

4-way adjustable T-arms standard with optional break-away arms

26" diameter 5 prong base

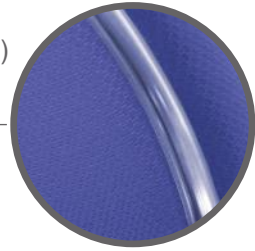
Features

- Logic Plus is warranted up to 500 lbs
- 25" Wide Seat offers ample room and complete comfort
- Meets or exceeds ANSI-BIFMA X5.11-2015 Large Occupant Office Chair-Tests including Backrest Strength, Drop Test, Tilt Mechanism, Arm Strength and Vertical Arm Strength
- Additional durability options include ballistic nylon upholstery or edge protector which helps minimize wear and tear from intensive use or specialized work environments
- 10 year warranty on structural and mechanical components

Quick Ship
Express fabrics ship as fast as 5 business days.



Edge Protector (Optional)



a.



b.



c.

a. 1780-M1-A7 b. 1760-R1-A4 c. 1766-P1-A00

Ratchet back height adjustment with R1, M1, Y2, and P1 controls

Optional seat slider

Five control options

Shown: 1780-M1-A4



4" thick high resilient molded foam on every seat & back

Choose from six arm options

Attractive spider base



1760 MID-BACK



1760 MID-BACK



1780 HIGH-BACK

Quick Ship

Express fabrics ship as fast as 5 business days.

Control Availability

	S2	R1	M1	Y2	P1
1760	•	•	•	•	
1766					•
1768					•
1780	•	•	•	•	

Features

- Logic offers functions and ergonomics at a great price
- A6 and A7 arm options feature Ura-Soft® arm pads with height adjustment, pivot and sliding arm pads
- Waterfall seat front promotes circulation and good health
- Optional edge protector helps minimize wear and tear from intensive use or specialized work environments
- Stool models 1766 and 1768 features P1 posture back control with ratchet back height adjustment
- Lifetime warranty on structural and mechanical components



a.



b.



c.

a. 1725-R1-A4 b. 1725-GT-A1 c. 1726-P1-A00

Ratchet back height adjustment with M1, R1, Y2 and P1 controls

Optional seat slider

High resilient molded foam on every seat

Shown: 1725-S2-A6



Upholstered outer back

Choose from six arm options

Attractive spider base

Features

- 2.5" of high resilient molded foam on seat
- Six control options ranging from basic to multi-function
- R1, M1, Y2 and P1 controls feature ratchet back height adjustment for easy, seated adjustment of back height
- A6 and A7 arm options feature Ura-Soft® arm pads with height adjustment, pivot and sliding arm pads
- Waterfall seat front promotes circulation and good health
- Lifetime warranty on structural and mechanical components

Quick Ship

Express fabrics ship as fast as 5 business days.

Control Availability

	B2	S2	R1	M1	P1	Y2
1725	•	•	•	•		•
1726	•					•
1728	•					•



1725 LOW-BACK



1725 LOW-BACK



1725 LOW-BACK



a. 1660-M1-A4 b. 1660-R1-A00 c. 1426-B2-A1

Ratchet back height adjustment with M1, R1, Y2 and P1 controls

Optional seat slider

High resilient molded foam on every seat and back

Shown: 1425-R1-A4



Plastic protective outer back cover

Choose from six arm options

Attractive spider base

Features

- Agent offers cost effective features and highly adjustable ergonomic functions
- High resilient molded foam on every seat and back
- Five control options exactly match project needs
- Lifetime warranty on structural and mechanical components

Quick Ship

Express fabrics ship as fast as 5 business days.

Control Availability

	B2	S2	R1	M1	P1	Y2
1425	•	•	•	•		•
1426	•				•	
1428	•				•	
1660	•	•	•	•		•
1666	•				•	
1668	•				•	



1660 MID-BACK



1425 LOW-BACK



1660 MID-BACK



a. 1980-M1-A7 b. 1960-M1-A4 c. 1980-M1-A90

Ratchet back height adjustment

350 lb weight capacity & multi-shift use

Heavy duty diecast aluminum base with durable powder coated finish

60mm heavy duty casters

Shown: 1980-Y2-A7



High impact plastic outer back

Choose from six arm options

Multi-ply reinforced seat board

Features

- Enduro handles demanding 24/7 multi-shift requirements
- Heavy duty synchro-tilt or multi-function control
- Molded high resilient foam is used on every seat and back for ergonomic support and durability
- 10 year warranty on structural and mechanical components

Quick Ship

Express fabrics ship as fast as 5 business days.

Control Availability

	Y2	M1	P1
1960	•	•	
1966			•
1968			•
1980	•	•	



1966 STOOL



1980 HIGH-BACK



1960 MID-BACK



Crepe Black 101



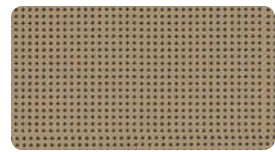
Gray 102



Dark Blue 104



Burgundy 106



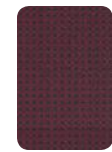
Matrix Champagne 111



Fern 112



Lead 113



Plum 114



Peacock 115



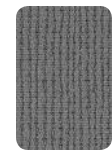
Coal 116



Bingo Champagne 131



Green 132



Gray 133



Cherry 134



Navy 135



Black 136



Mosaic Camel 141



Latte 142



Slate 143



Flame 144



Ocean 145



Nightfall 146



Tango Honey 151



Wasabi 152



Bark 153



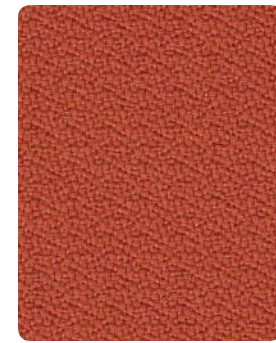
Ruby 154



Lake 155



Charcoal 156



Origin Mikan



System



Arundel



Eco



Sodalite



Sapphire



Basalt



Poppy



Garnet



Indigo



Iron



Malt



Jet



Tate Helm



Digital



Bristol



Claret



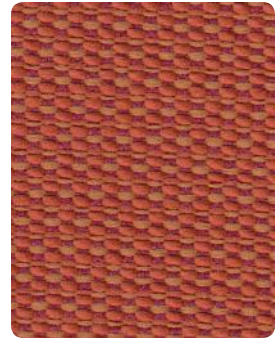
Deep



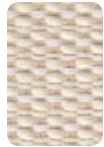
Burl



Demure



Epic Slice



Pearl



Limestone



Kiwi



Jute



Capri



Steel



Azure



Flare



Regal



Granite



Porcini



Espresso



Knack Filament



Teak



Zing



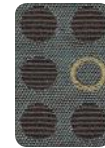
Brisk



Zest



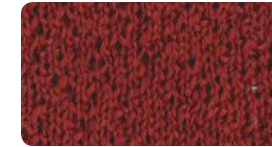
Reed



Fresco



Suave Black K01*



Cognac K02*



Helsinki K03*



Cologne K04*



Provence K05*



Birmingham K06*

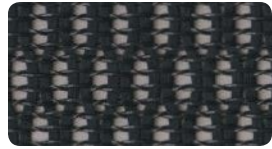


Ivory K07*

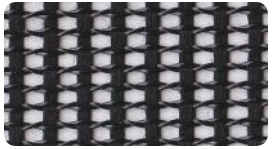


London K08*

*Reference these color codes for Knit Back (KB) selection on Cosmo series.
 Note: All other chairs normally upholstered with fabric outer backs will be upholstered with Black Ballistic Nylon on the outer back.



Grade M0 Black M01



Grade M1 Black M11



Grade M1 Gray M12



Grade M1 Silver M13



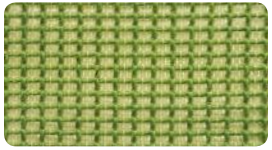
Grade M2 M21 Black



Grade M2 M22 Gray



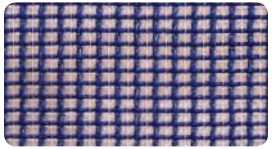
Grade M2 M23 White



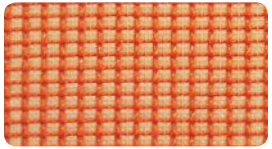
Grade M2 M24 Green



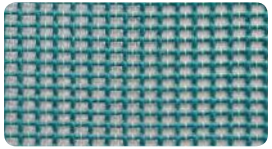
Grade M2 M25 Red



Grade M2 M26 Blue



Grade M2 M27 Orange



Grade M2 M28 Aqua



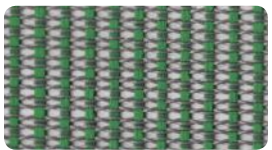
Grade M3 M31 Graphite



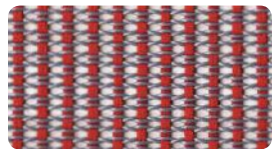
Grade M3 M32 Slate



Grade M3 M33 Snow



Grade M3 M34 Sage



Grade M3 M35 Cardinal



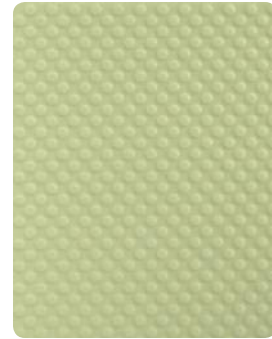
Grade M3 M36 Royal



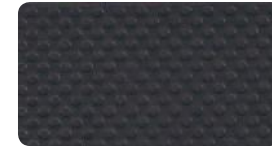
Grade M3 M37 Tangerine



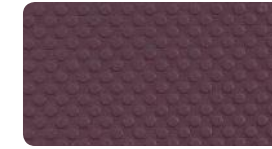
Grade M3 M38 Plum



Pale Water Green P09



Black Swan P01



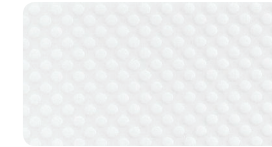
Classic Burgundy P02



Coral Red P03



Sunbonnet Yellow P04



White Whisper P05



Boulder Gray P06



Dover Sky P07



Essex Blue P08



Cinnibar Orange P10



Federal Blue P11

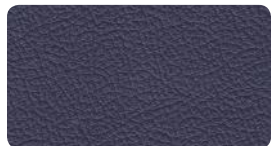
SIGNATURE textiles

Use actual material samples for color matching and ordering.
Colors of printed samples may vary from actual samples.

*All colors are express shipping.



Poly Black



Baltic



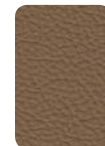
White



Mist



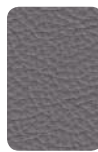
Taupe



Mushroom



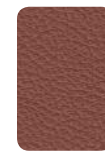
Camel



Ash



Cafe



Saddle



Mahogany



L3 Highlands Black

L4 Sierra Leather Match also available to ship in standard lead time.
Full Grain Italian leathers matched with Polyurethane colors above.

Reduced Environmental Impact

Poly utilizes the latest technology for environmentally friendly, coated fabrics. It is a water-based polyurethane that is free of solvents, antimonies or other hazardous chemicals: PVC free, solvent/DMF free, formaldehyde free, phthalate free, heavy metal free and low VOC.

Use actual material samples for color matching and ordering.
Colors of printed samples may vary from actual samples.



Founded in 1982, 9to5 Seating is a privately owned, vertically-integrated company, specializing in the design and production of ergonomic office seating to accommodate the rigorous demands of today's office environments. 9to5 Seating presents an extensive collection of executive, task, side, conference and stool seating. Seat, control, arm, chair adjustment, finish and fabric options are plentiful. Customer customization is an everyday demand that 9to5 Seating welcomes. 9to5 Seating combines its state-of-the-art, in-house manufacturing systems with a commitment to ongoing improvements in all phases of operation. With over 500,000 square feet of manufacturing resources, we are confidently empowered to deliver products offered at unparalleled pricing, with quality instilled in every phase of manufacturing.



Quality is the Issue

Uncompromising quality from within. Every chair, every time.

Vertically Integrated

Fusing manufacturing with client fulfillment.

Ship to Suit

As fast as 5 business days. Always timely.

Service Pure and Simple

Personalized and responsive.

Lifetime Warranty

Building quality from the ground up.

Vertically Integrated



- CAD DESIGN
- CNC MOLD & DYE FABRICATION
- PLASTIC INJECTION MOLDING
- FOAM INJECTION MOLDING
- METAL STAMPING
- PLYWOOD MOLDING
- CNC ROUTING
- TESTING LABORATORY



9to5 and the Future

While 9to5 Seating has many years of experience in the manufacture of office seating, it truly differentiates itself from its competitors through its vertical integration, with wholly owned manufacturing facilities in both the United States and China. It is through this combination of domestic and foreign manufacturing that we are able to offer the customer the options and the wide selection of upholstery material only available when the product is manufactured in the United States, but at prices that rival products that are totally of foreign manufacture.

Most of our competitors buy various parts from suppliers overseas. Since they do not own the factories supplying these components, they can neither control the consistency of the raw materials going into the product, nor can they control the environment in which the part is manufactured.

At our factory abroad, we ensure the quality of our materials by purchasing them from suppliers such as BASF. Additionally, our factory operates at the highest environmental standards to ensure both the well-being of our employees and of the planet.

Companies today and in the future demand the most for their money without sacrificing quality, selection and speed of delivery. 9to5 Seating is prepared to deliver.



The Chemical Company

9to5 Seating products are manufactured with meticulous attention to detail to achieve a level of quality that is free from defects in material and workmanship. In an effort to stand behind this philosophy, 9to5 Seating warrants to the original user of the product and from the original date of purchase, the following:

- With the exception of products noted below Lifetime Warranty to the original end user, the company will repair or replace, at its option, without charge to the original purchaser only, factory defective structural and mechanical parts. This warranty is for single shift, standard commercial usage, defined as a standard 8 hour work day, five days a week. Weight limitations vary by product.
- Upholstery fabric and foam is warranted against wear through and deterioration during normal usage for a period of five (5) years. However, the company does not warrant leather against routine scratching and scuffing, as all leather is subject to minor blemishes during use. COM and COL are not warranted. Due to natural variations in material, furniture containing leather is sold subject to normal variations and/or irregularities of color, texture, and grain.

For Logic Plus™, Enduro™ and Strata™ Heavy Duty Series, please contact 9to5 Seating.

Should parts fail for any model during normal use within the applicable warranty period, please provide 9to5 Seating with a description of the failure and proof of purchase (Sales Order number located on the bottom of the chair) and if necessary you may need to return the defective part, freight prepaid to 9to5 Seating for inspection, repair and/or replacement, together with a copy of original sales receipt. Labor and installation service is not covered under warranty. Please do not send parts without prior authorization.

Send parts to:

9to5 Seating - Warranty Department
3211 Jack Northrop Avenue
Hawthorne, CA 90250

9to5 Seating will inspect the part in question, repair or replace at its option any defective part at no charge and return to the original purchaser.



This warranty does not apply to product or parts of product that have been subjected to misuse or abuse, accident, alteration, unauthorized repair or which have been damaged in transit. You agree to indemnify and hold harmless 9to5 Seating, its officers, directors, shareholders, employees, and agents from any actions, claims, demands, damages, liabilities, costs, and strict liability in tort or contract, or any other legal theory arising out of the misuse or abuse, alteration, or damage in transit of the product.

Limitation of Liability

Under no circumstance, including but not limited to breach of contract, breach of warranty or negligence, shall 9to5 Seating be liable for lost profits, loss of goodwill, stored data, general, special, consequential or exemplary damages, even if 9to5 Seating had notice of these damages or they were foreseeable. 9to5 Seating shall not be responsible for verifying dealer's or customer's description of needs, data, or the fitness for a particular purpose of goods. 9to5 Seating's Liability in all cases shall be limited to repair or replacement of the defective parts, or the purchase price of the product. Damages resulting from misuse, abuse, alteration, negligence, or accidents are not covered under this warranty.

9to5 Seating makes no warranty that any of its products are suitable for any particular purpose and makes no other warranties, express or implied, other than those set out here. As codes and standards vary from one jurisdiction to another, references to compliance are solely for convenience and without any representation as to accuracy or suitability. Users must verify the suitability of such information or product for their specific application. In no event shall 9to5 Seating be liable in either tort or contract for any loss or direct, special, incidental, consequential, or exemplary, damages.

ANSI/BIFMA

The Business and Institutional Furniture Manufacturer's Association (BIFMA) has developed tests which have been approved by the American National Standards Institute (ANSI) for determining the strength and durability of seating in its everyday use. This statement does not serve as a warranty or guarantee, however 9to5 Seating products found within this price list generally meet or exceed applicable BIFMA and ANSI standards.

For complete text of warranty, please call 9to5 Seating at: 1.888.925.SEAT

EXCEPT AS OTHERWISE PROVIDED, 9TO5 SEATING MAKES NO OTHER WARRANTIES, EXPRESS OR IMPLIED, INCLUDING BUT NOT LIMITED TO THE WARRANTIES OF MERCHANTABILITY AND FITNESS FOR A PARTICULAR PURPOSE.

Executive/Conference

Axis 26
 Bristol..... 22
 Cayman..... 28
 Cortina 24
 Cosmo..... 30
 Vesta 10

Professional/Task & Lab

Agent..... 54
 Aria..... 12 **NEW***
 Bella 37
 Bella Mesh 35
 Brio..... 20
 Cydia Upholstered..... 6 **NEW**
 Cydia All Mesh..... 8 **NEW**
 Enduro..... 56
 Logic Plus 48 **NEW**
 Logic 50
 Precept..... 52
 Strata All Mesh 16 **NEW**
 Strata..... 18
 Theory 4 **NEW**
 Vault 14 **NEW***

Guest Stacking & Nesting

Bella 44
 Bella Mesh 42
 Indy 34
 Kelley 32 **NEW**
 Link..... 46
 Shuttle Plastic..... 36
 Shuttle..... 38
 Shuttle Mesh/Sled Base..... 40 **NEW**

Upholstery

Mesh 61
 Plastic 62
 Leather..... 63
 Textiles 57-63





3211 Jack Northrop Ave.
Hawthorne, CA 90250

PHONE

888.925.SEAT

FAX

866.925.SEAT

EMAIL

sales@9to5seating.com

9to5seating.com

