



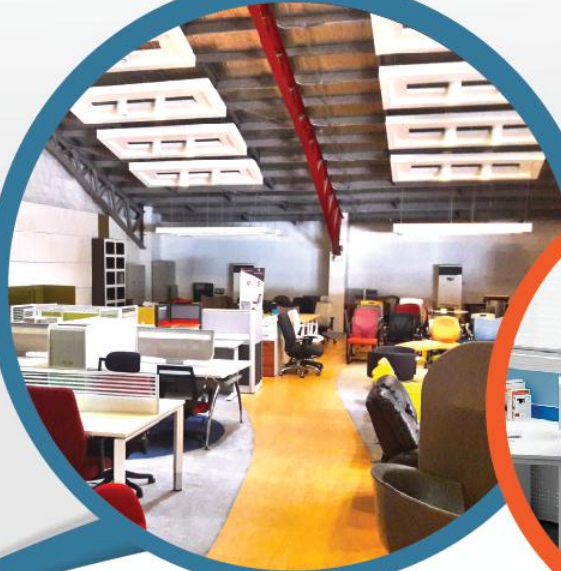
FUNCTIONSMITH, INC.

MANILA • GUANGZHOU



FUNCTIONSMITH, INC.

MANILA • GUANGZHOU



THE COMPANY

MANUFACTURER

IMPORTER

DISTRIBUTOR

At the turn of the 21st century, in the year 2000, a group of forward thinking individuals gathered and decided to create “functional furniture with a quality of a goldsmith”, to cater to the burgeoning corporate market.

To best embody this philosophy, they took the first and the last words and combined it to form one single word and FUNCTIONSMITH was born.

MISSION & VISION

FUNCTIONSMITH is geared to become as one of the leaders in the industry by providing the highest quality products, services and cost effective solutions delivered on time. We have fully upgraded our systems and extensively devoted our efforts in training our technical and production personnel to meet global standards. These would also guaranty the utmost efficiency and streamlined operations that would save our clients a lot of time and money.

PRODUCTS & SERVICES



Office Systems ■

Seating ■

Joineries ■

Storage System ■

Powder Coating Services ■

Dormitory and Condotel Furniture ■

Customized Furniture ■





FUNCTIONSMITH

MANILA • GUANGZHOU

MAIN GATE



PRODUCTION AREA

*7,300 sqr. meter plant size



SHOW ROOM





PRODUCTION AREA

- *7,300 sq. meter plant size
- * 300 well trained production workers
- *Upgraded systems and machineries
 - CNC machine
 - Router
 - Edge bonding machines
 - Complete line of wood working machines



OFFICE SYSTEMS

TRIMS: K2/ K3/ K6/ P42

SYSTEMS FURNITURE





TABLES

Executive/ Meeting/ Conference/ Reception
Center table/ Accent table/ Side table/ Coffee table



EXECUTIVE TABLE





MEETING TABLE



▶ CONFERENCE TABLE



RECEPTION COUNTER





ACCENT TABLE



>> CT-11



>>CT-06





SEATING

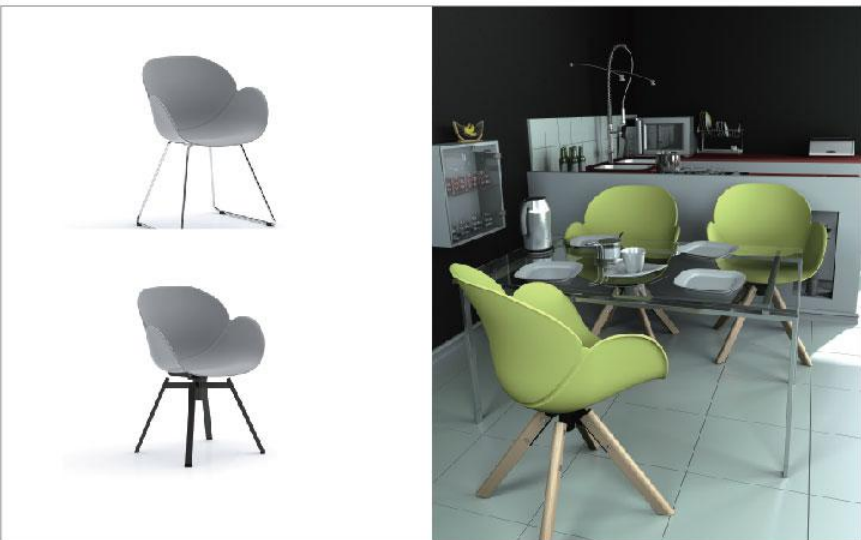
Accent / Bar / Lounge / Sofa / Office



ACCENT CHAIR



PANTRY CHAIR



LOUNGE CHAIR





SOFA





OFFICE CHAIR





JOINERIES



JOINERIES





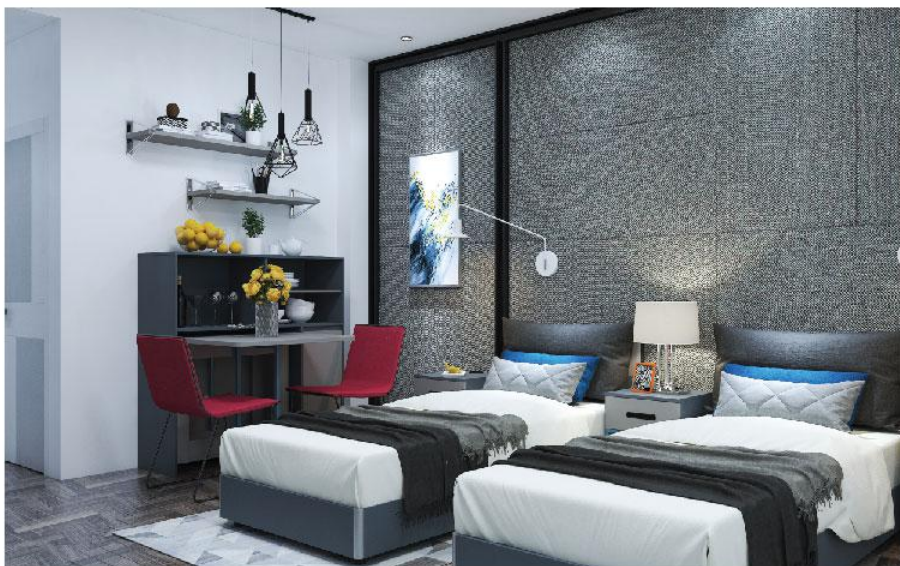
STORAGE SOLUTION

Mobile pedestal drawer/ Lateral filing cabinet/ Compactor



DORMITORY & CONDOTEL FURNITURE

CONDOTEL FURNITURE





9to5[®] seating



HIGH
QUALITY



VERTICALLY
INTEGRATED



CUSTOM MADE



LIFETIME
WARRANTY

DISTRIBUTED BY



FUNCTIONSMITH, INC.

MANILA • GUANGZHOU

EXCLUSIVE
DISTRIBUTOR

9to5 Seating is a privately owned, vertically-integrated company, specializing in the design and production of ergonomic office seating to accommodate the rigorous demands of today's office environments. 9to5 Seating presents an extensive collection of executive, task, side, conference and stool seating. Seat, control, arm, chair adjustment, finish and fabric options are plentiful.

Customer customization is an everyday demand that 9to5 Seating welcomes.



STOC

OFFICE SYSTEMS

Designers exclusive copyright,
income rights

All of STOC's designers independently enjoy product copyrights, intellectual products, and copyrights of their products, thereby increasing the designer's revenue and ensuring the continued advantages of the product life cycle.

3D laser seamless edge banding technology

STOC hopes that every good design and work will become a vivid product and a quality experience.



FUNCTIONSMITH

MANILA • GUANGZHOU

EXCLUSIVE
DISTRIBUTOR





DISTRIBUTED BY



Accent Laminate offers a broader range of looks than ever before. Transform spaces with our modern laminates that are as beautiful as they are durable. Mix and match solids, graphic patterns and finishes. Achieve the look you want for any design challenge or budget



BITTO®

Absolute quartz surfaces
100% acrylic solid surfaces

DISTRIBUTED BY



100% Acrylic Solid Surface:

High flexural strength of Bitto 100% Acrylic solid surface reaches 42.6pma, over the solid surface 's standard 40pma.

Ingredients of Polyester Solid Surfaces:

40% UPR (unsaturated polyester resins) +
56% ATH (aluminium hydroxide, the material
of making toothpaste) +
4% pigments & granule & auxiliary material.

Bitto Polyester Solid Surfaces is a kind of
hard artificial stone, and excellent option
for color, pattern, texture and finish.

There are many color and style options
with beauty and durability.



SGS





gruppo
mastrotto

Italian Pure Leather

world leader in leather production

Type of Leathers:

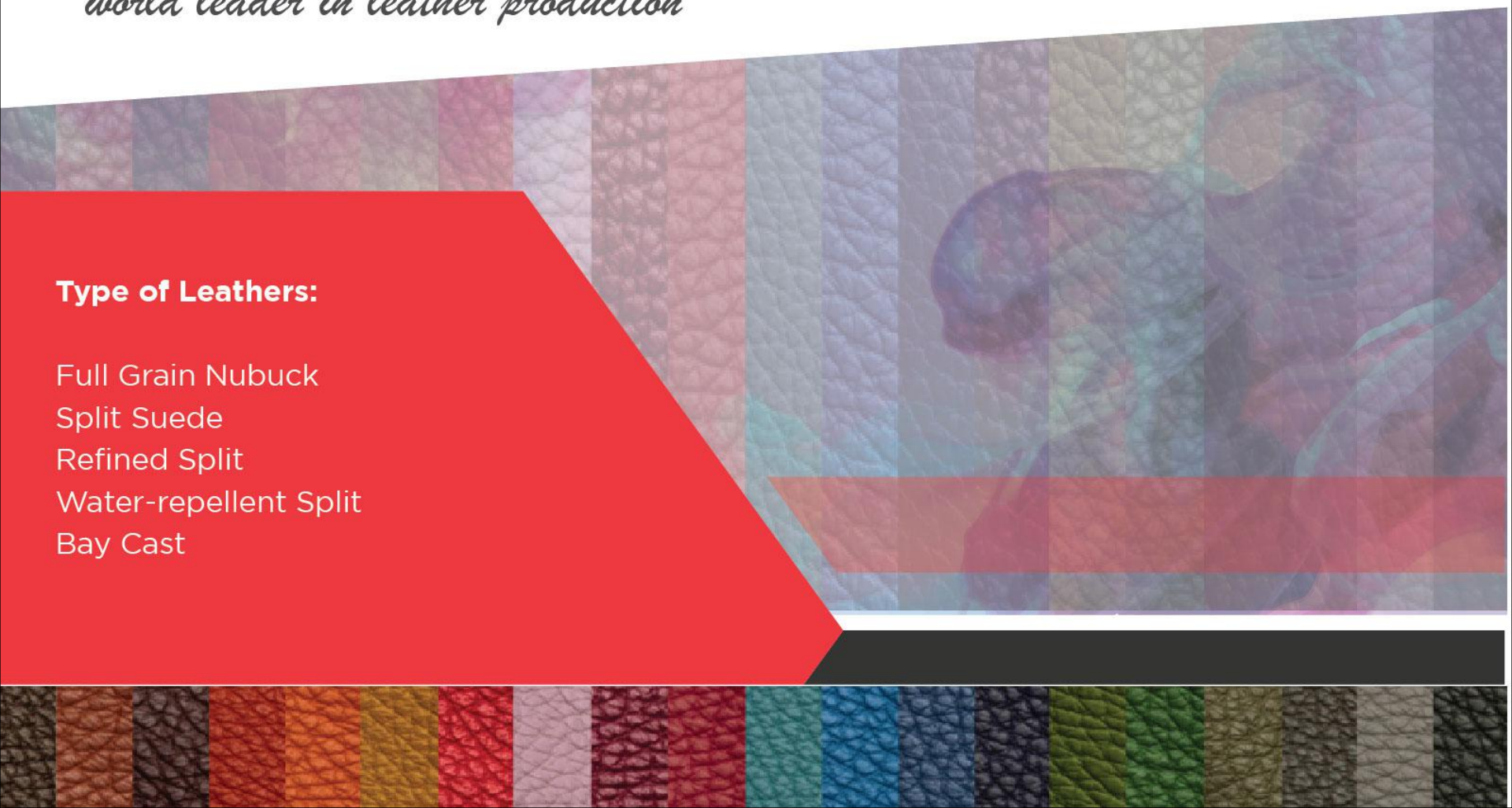
Full Grain Nubuck

Split Suede

Refined Split

Water-repellent Split

Bay Cast





COMPANY AFFILIATES



TOP PROJECTS COMPLETED

CONVERGYS

aboitiz

BRITISH COUNCIL

Aviation
Ground Seminars

PHILAM
LIFE
An AIA Group Company

P&G



DTSI GROUP
an NTT Communications Company

rdt
Office Solutions Group Ltd

CITY OF DREAMS
MANILA



TOYOTA

UR
UNIVERSAL ROBINA CORPORATION

VISA

ANYA
RESORT RESIDENCES
TAGAYTAY

cebu pacific

IBM

PROVIEW

Aeon Fantasy
kidzogoona
キッズーナ

Manulife

Tupperware

Deutsche Bank

SUMMIT
MEDIA



MEGAWORLD

accenture

Teleperformance

Globe

SUBARU

CaliBurger

Belo
MEDICAL GROUP

AFPMBAI

Google

smsglobal

intelligent
analytics

KLM
Royal Dutch Airlines

ROBINSONS LAND CORPORATION

gsk
GlaxoSmithKline

PHO 24
VIETNAMESE PHO HOUSE

THE ASCOTT
MAKATI & BONIFACIO GLOBAL CITY

CALTEX

MeadJohnson
Nutrition

NAIA
We get the job done

SUN
CELLULAR

Lattice
Semiconductor Corporation

METRO
PACIFIC
INVESTMENTS

MDC
BuildPlus

Garena
connecting world gamers

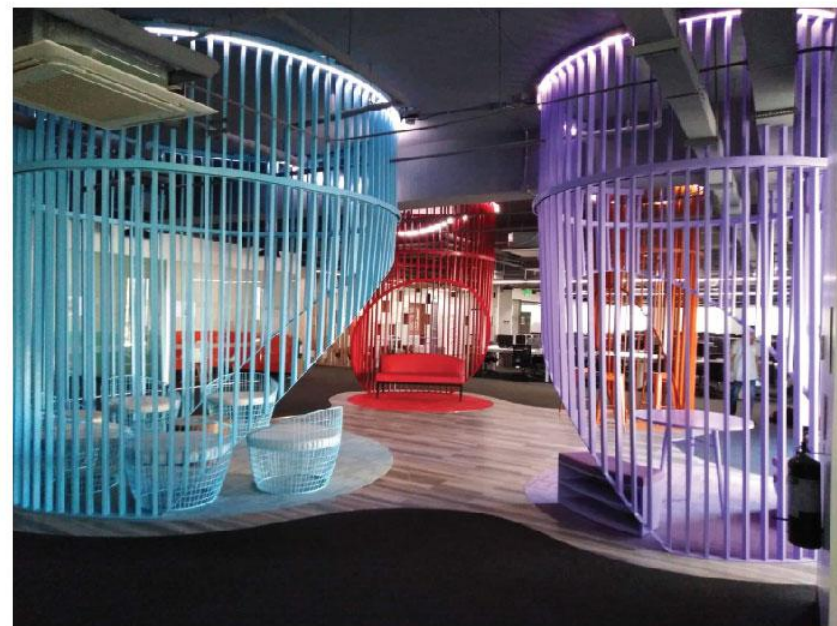
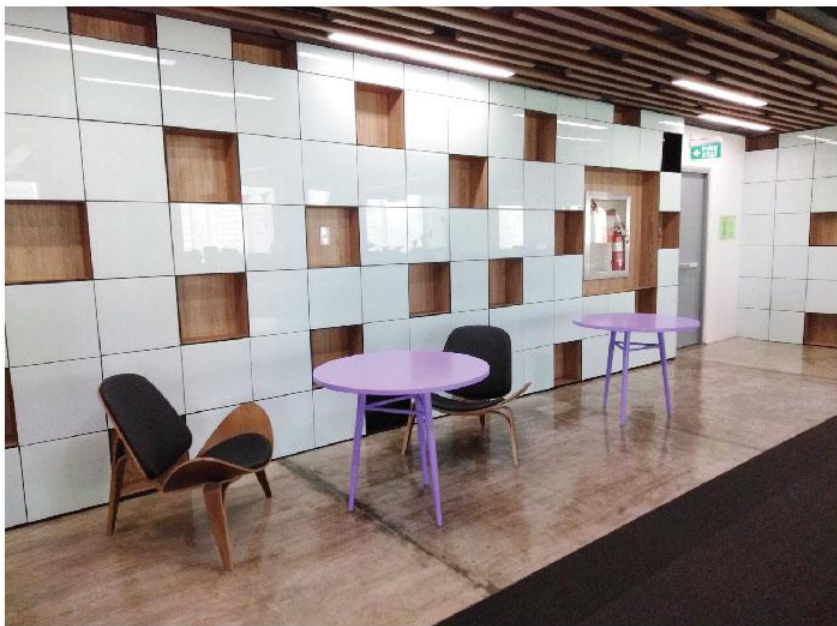
fairview
terraces

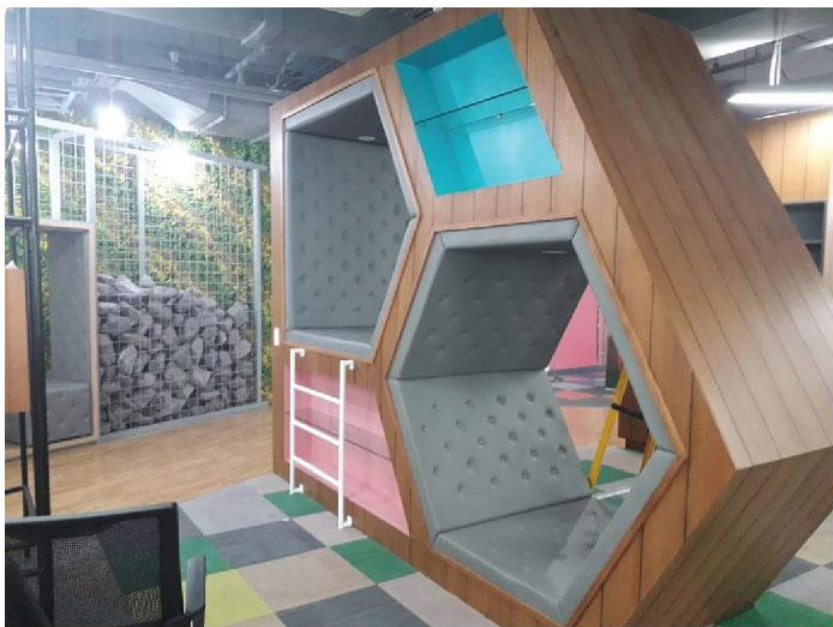
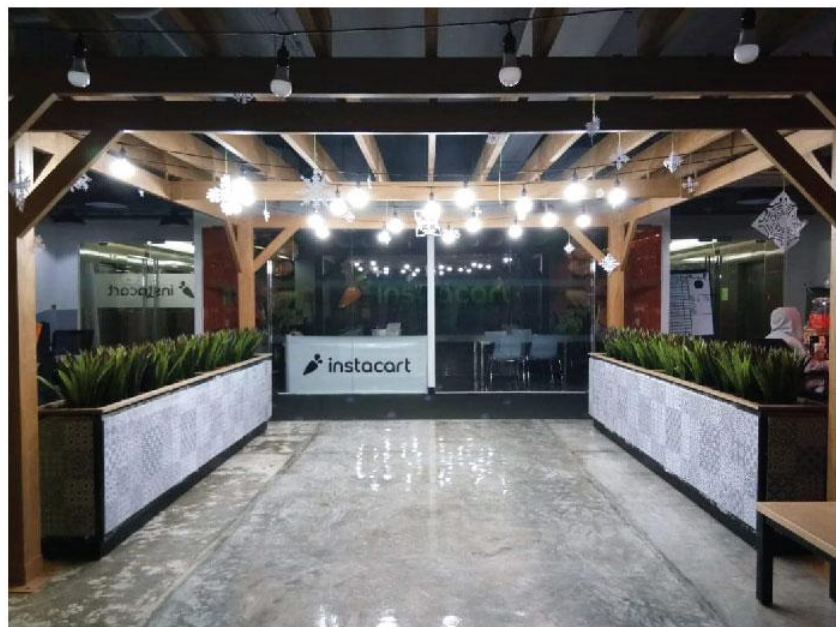
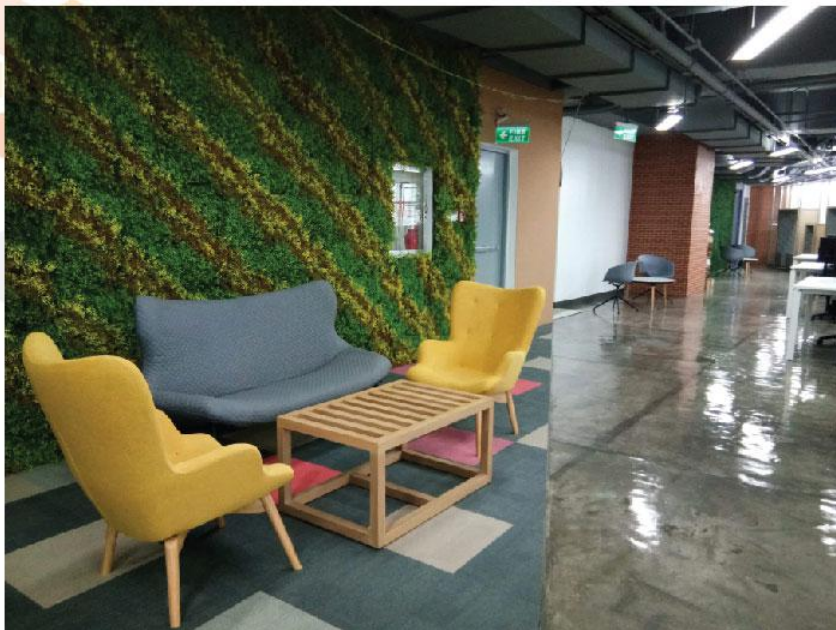
LOTTE
HOTELS & RESORTS

SONY | BMG
MUSIC ENTERTAINMENT

PRI

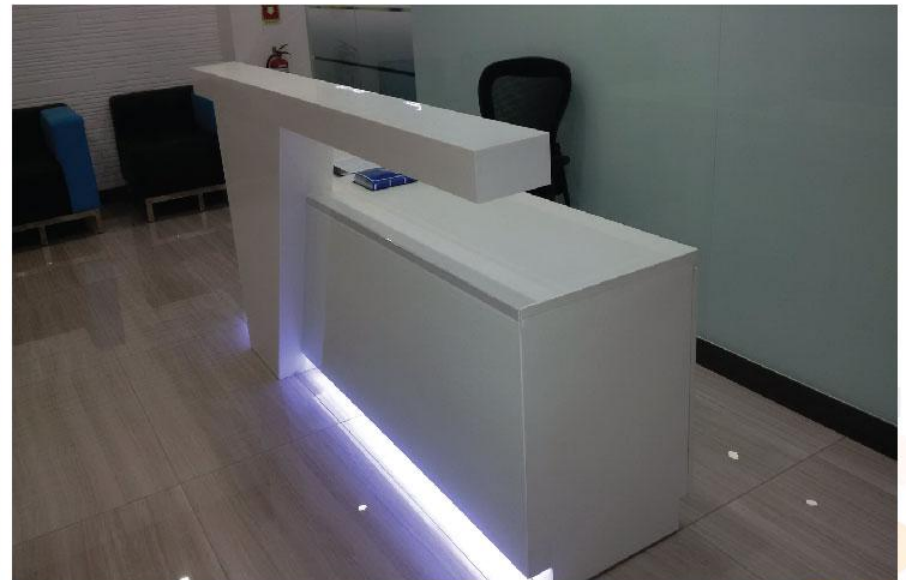
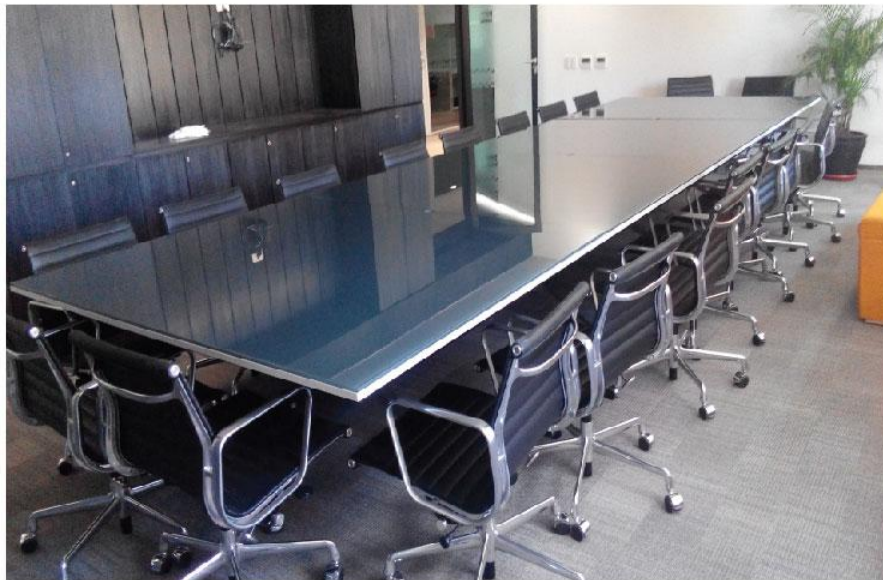
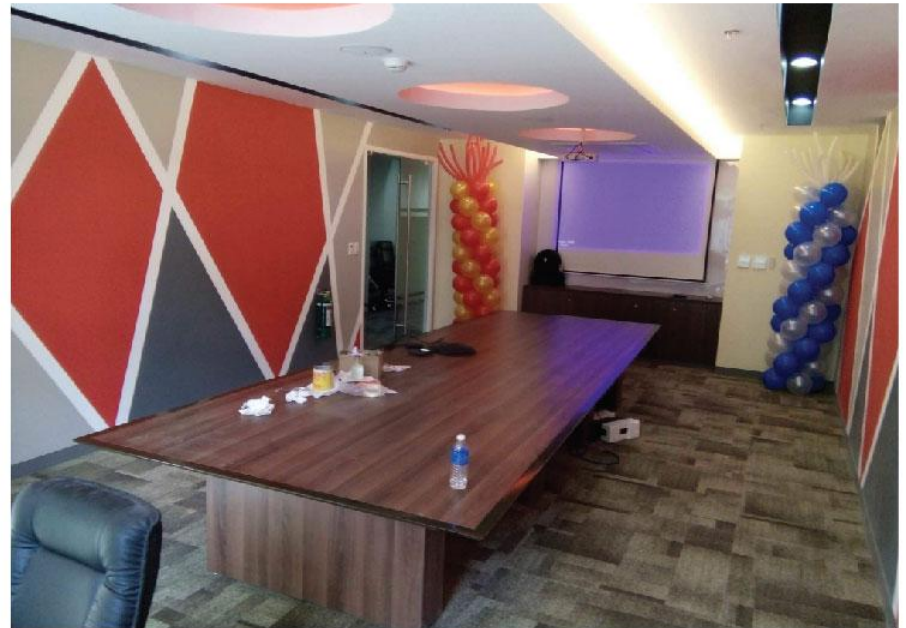
PHINMA
Light Can Be Better





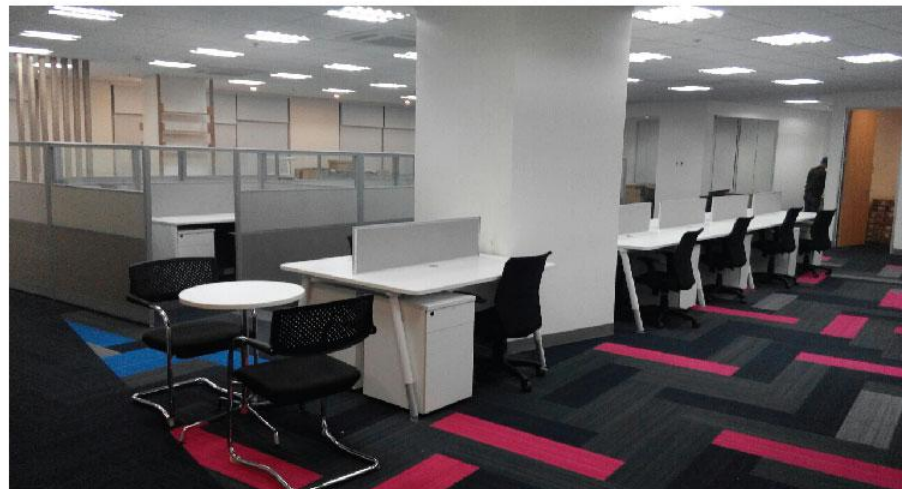




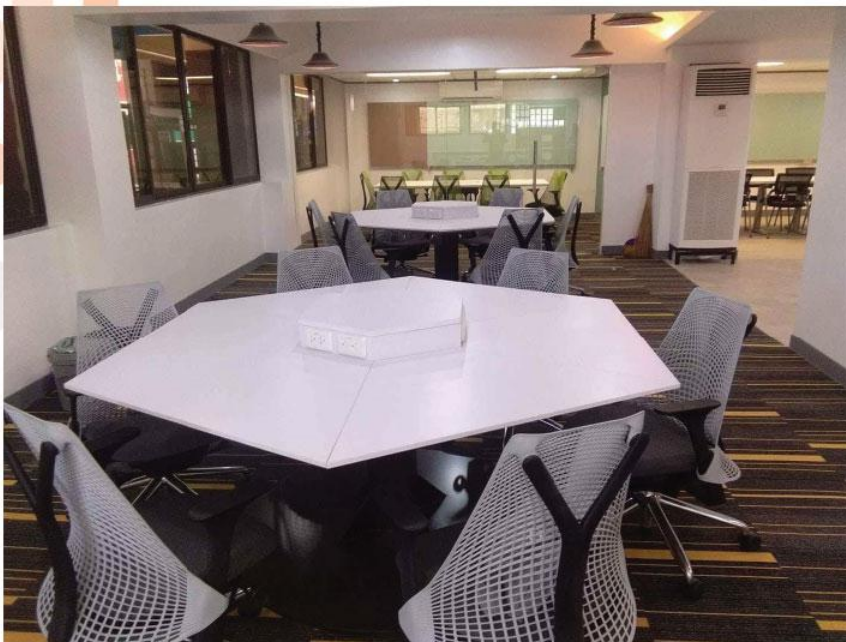


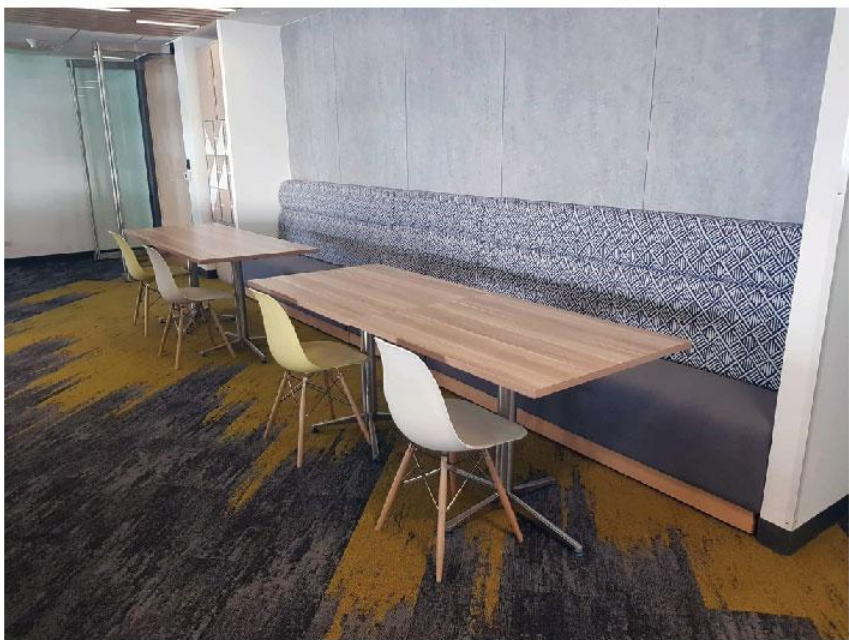




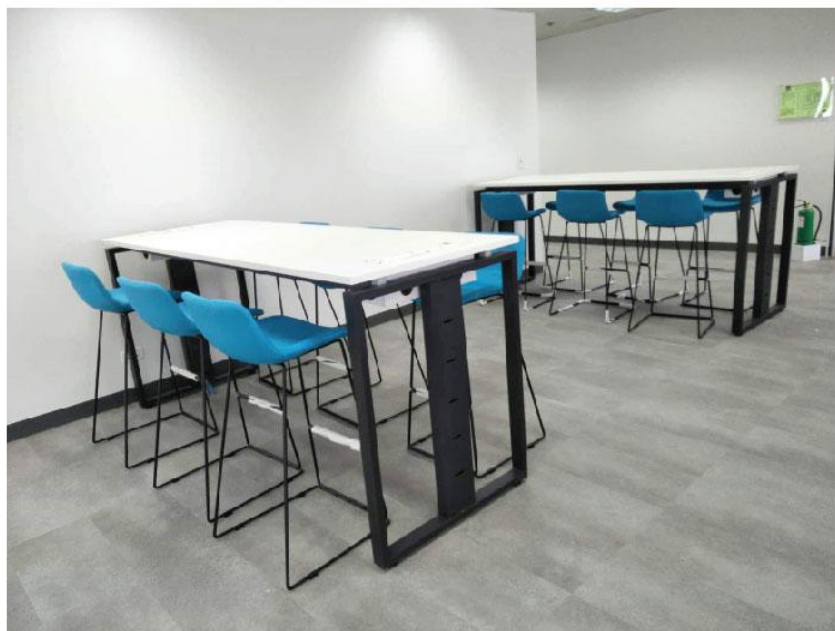


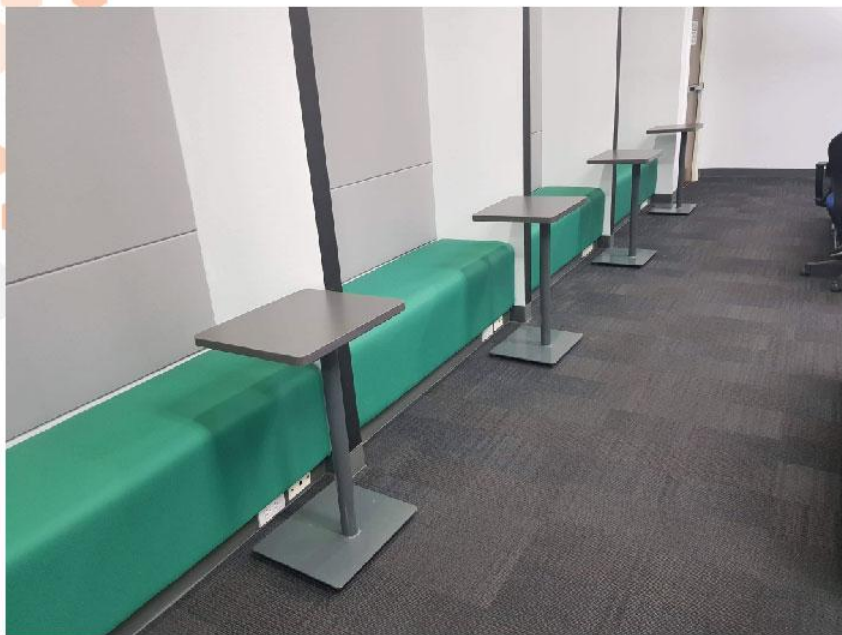


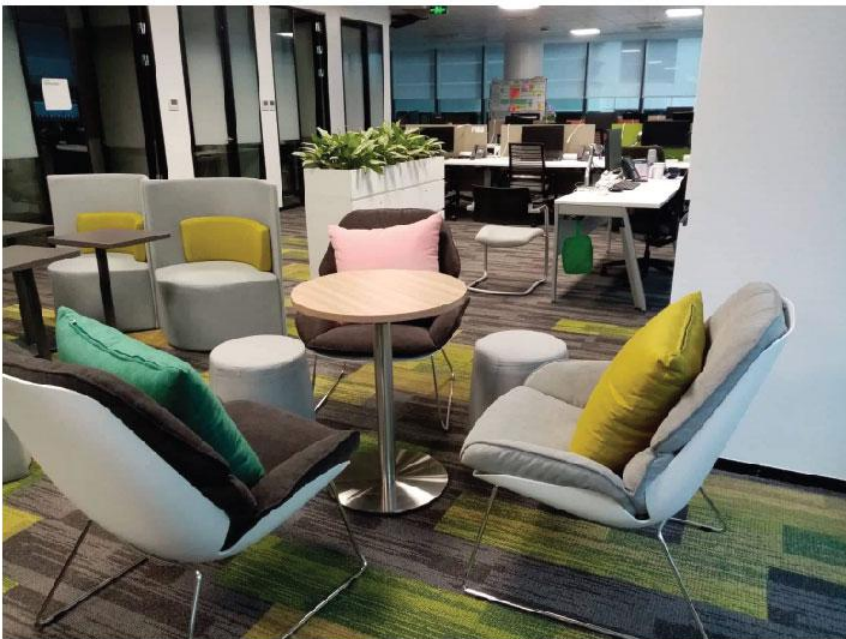












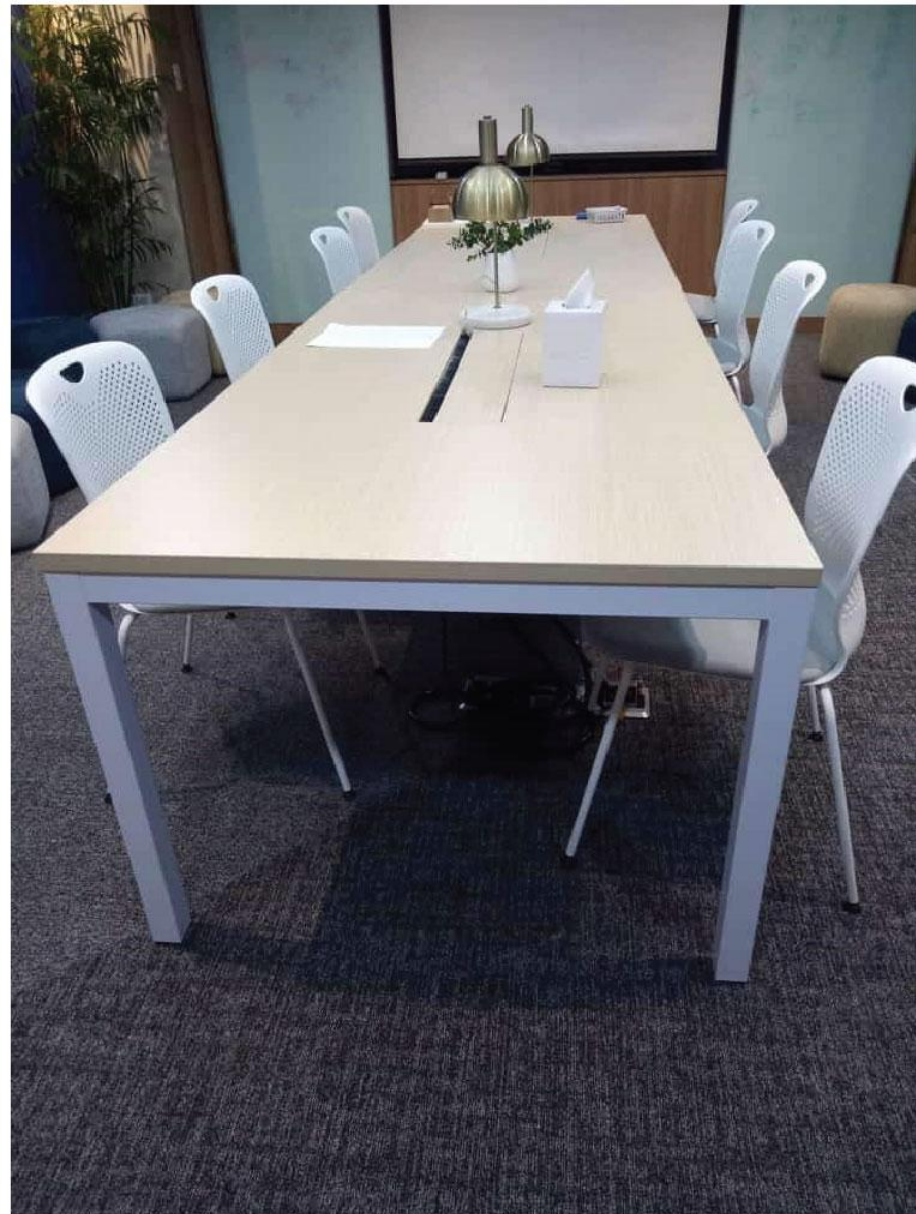


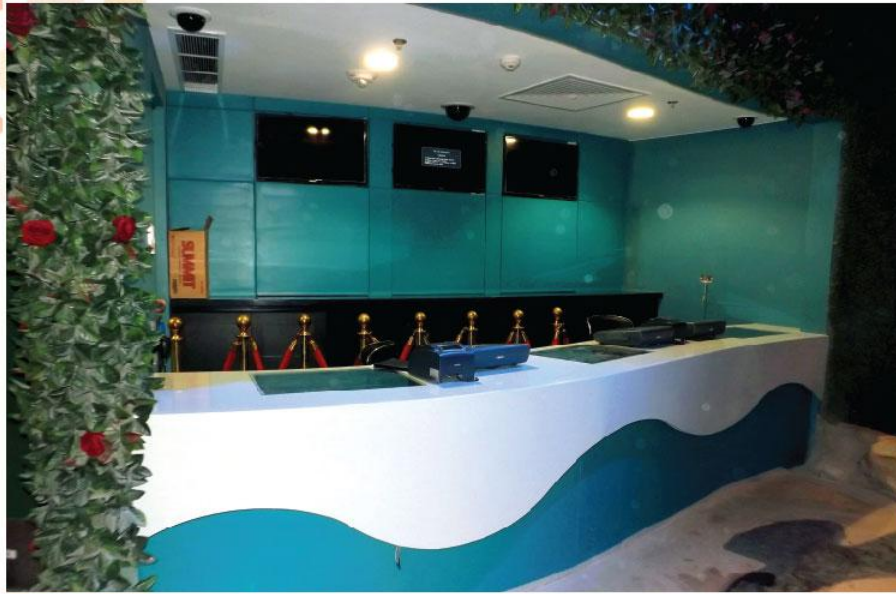








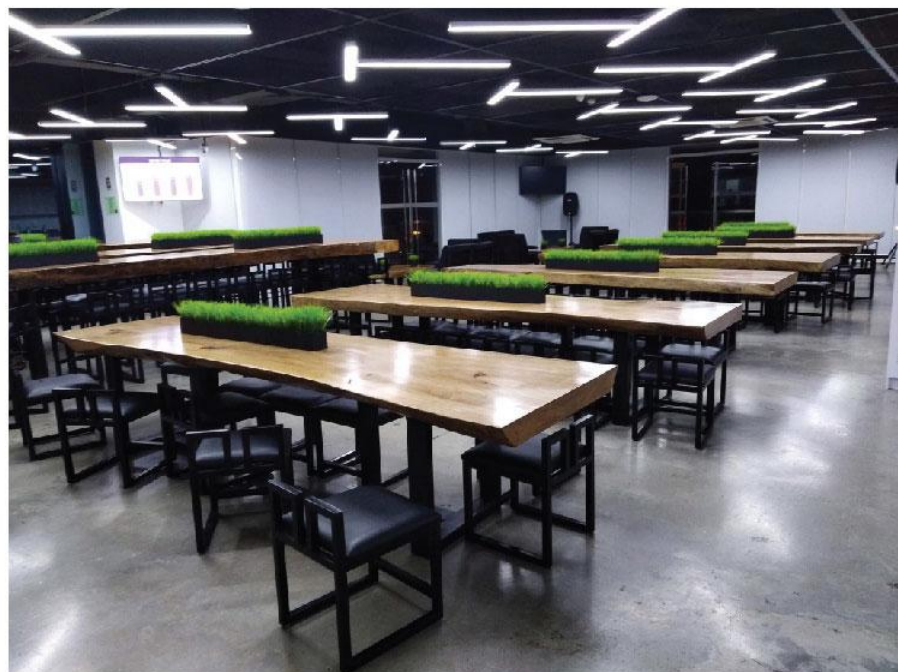






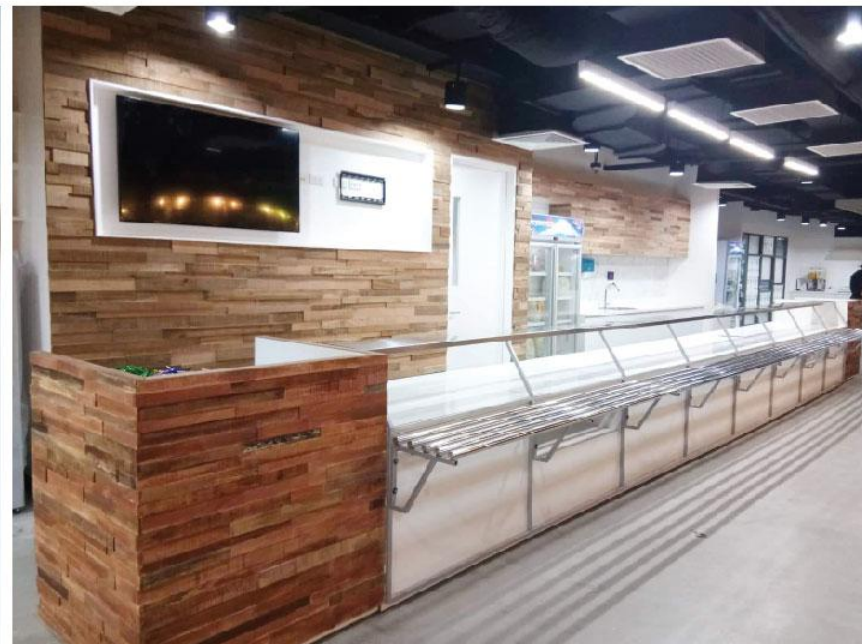




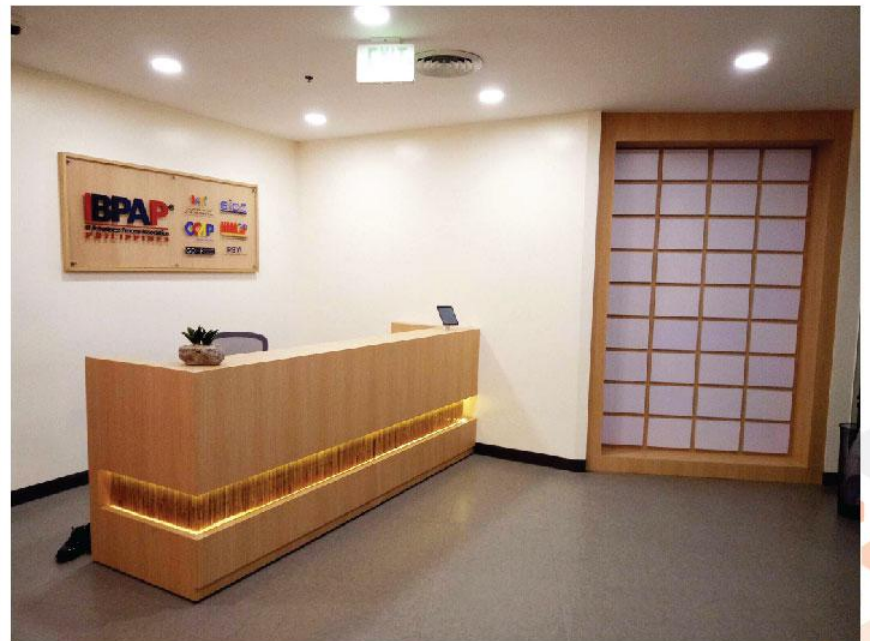


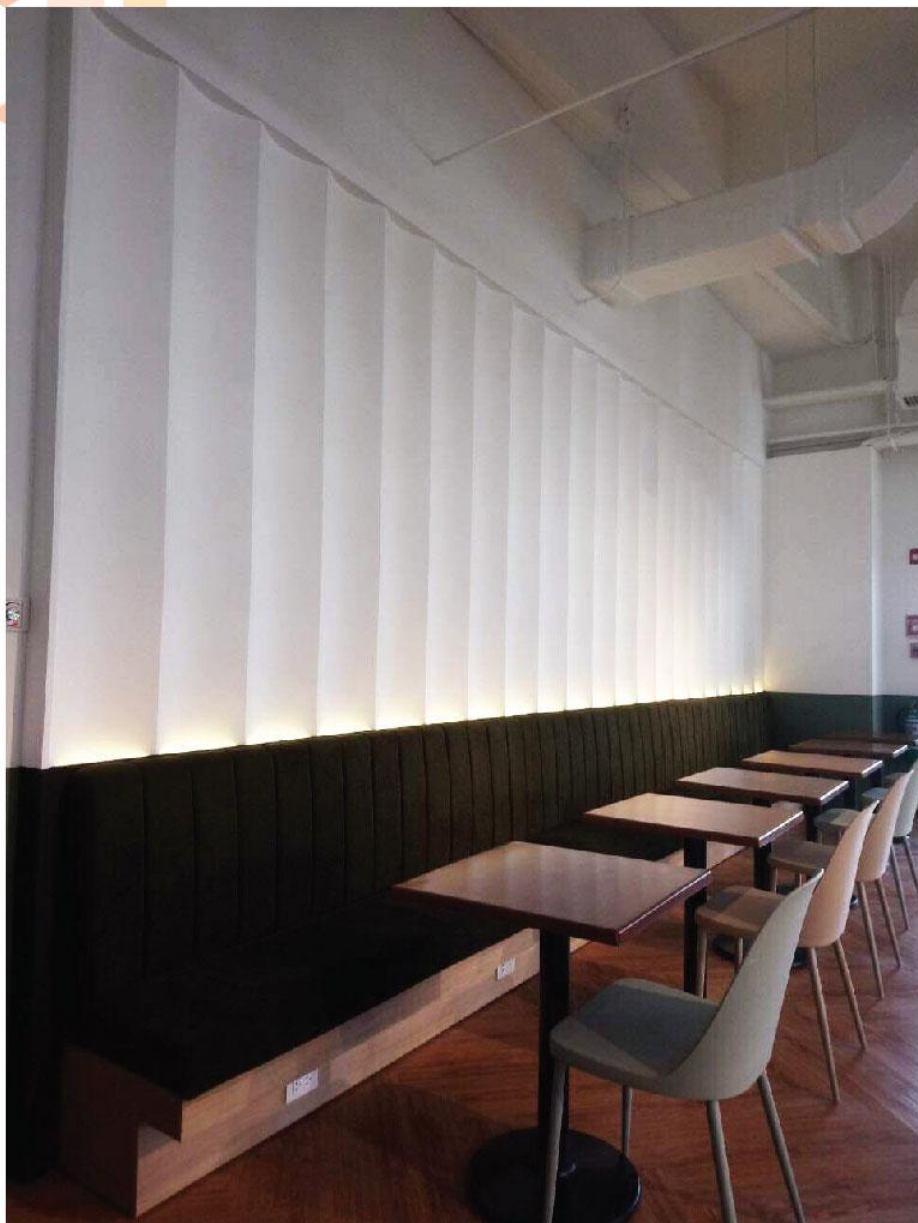




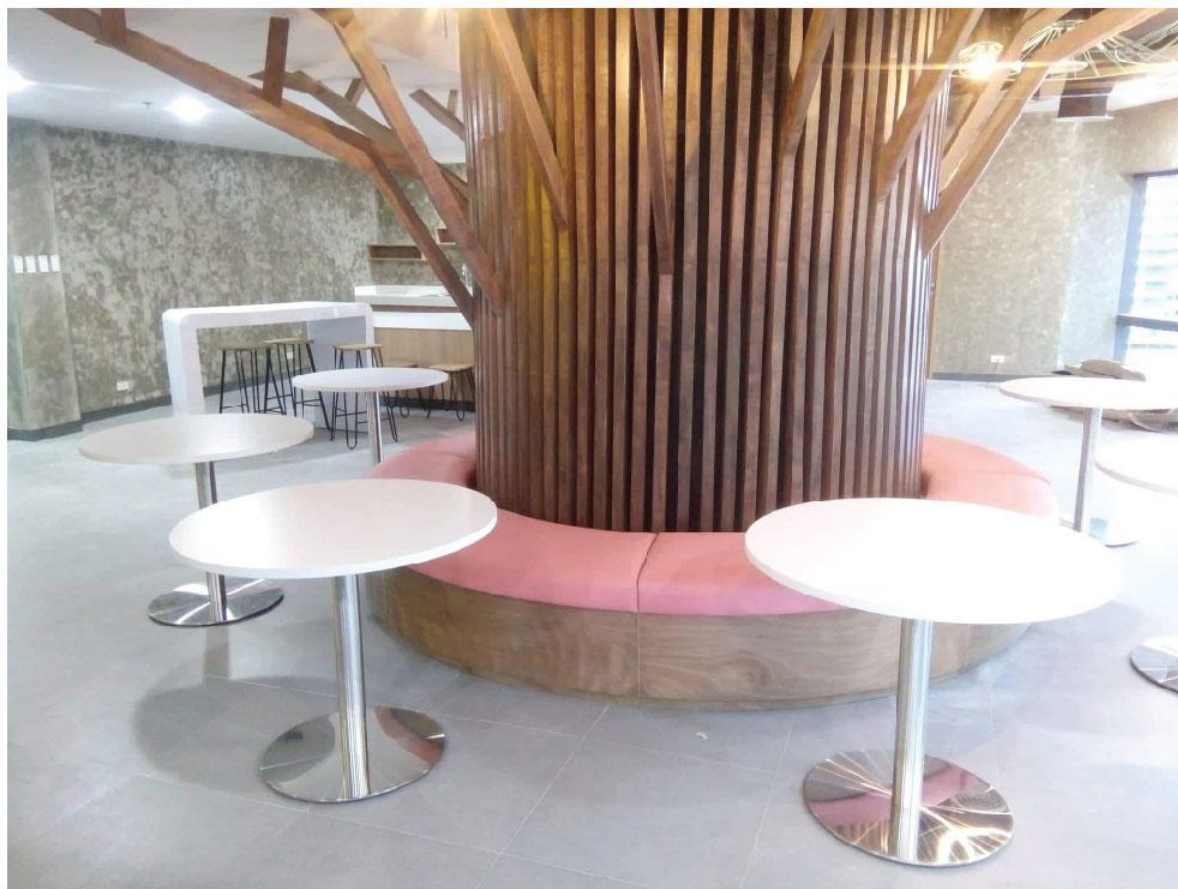


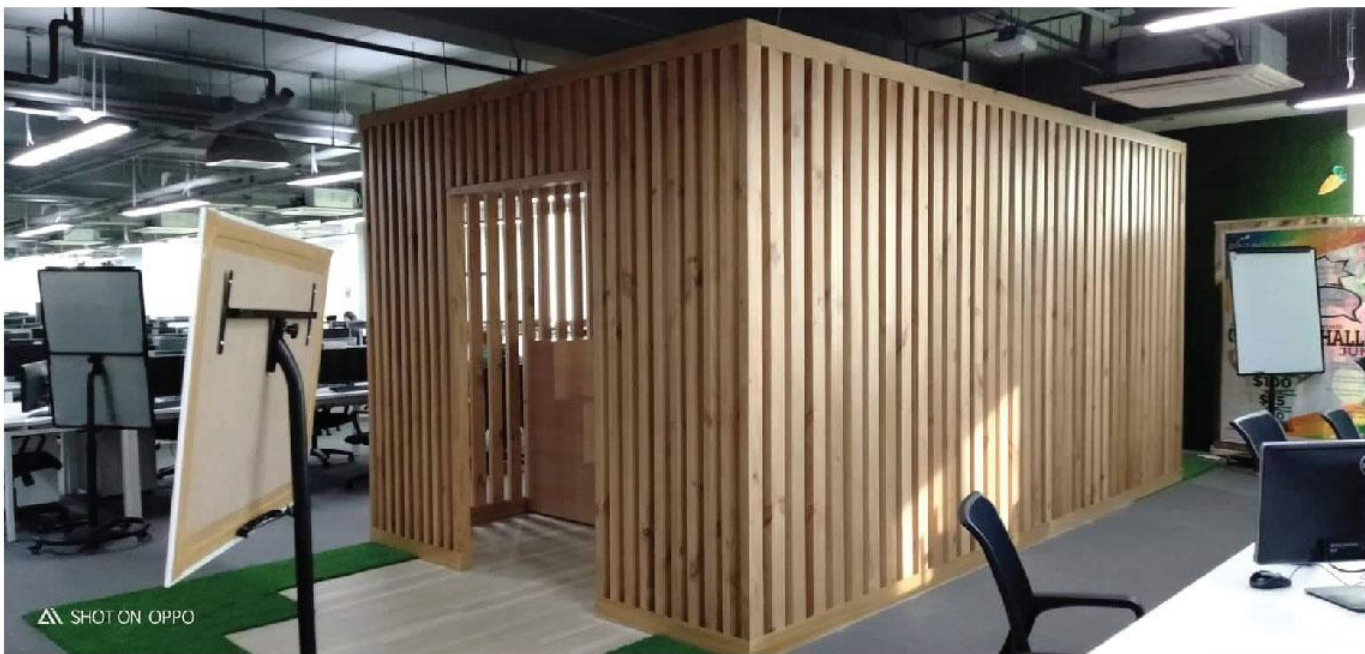


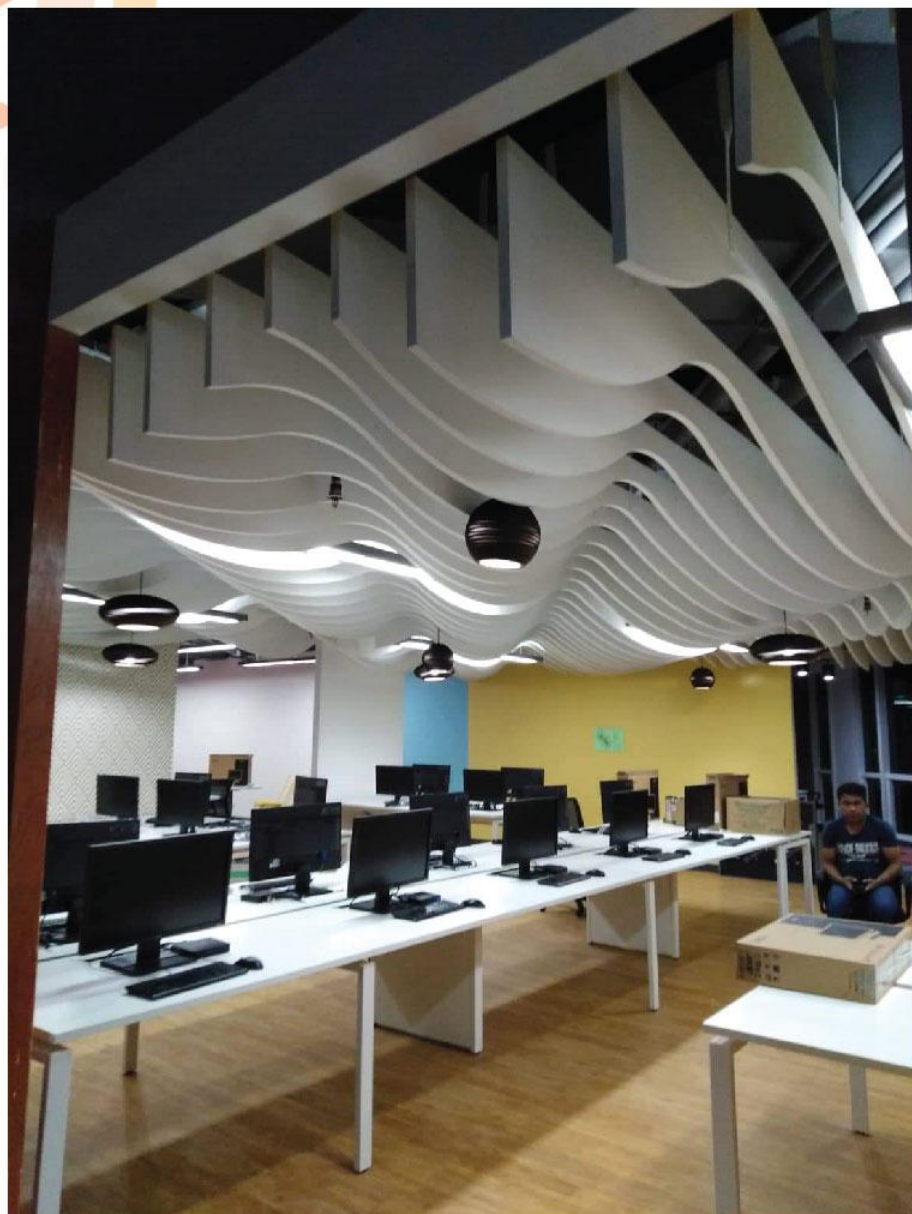




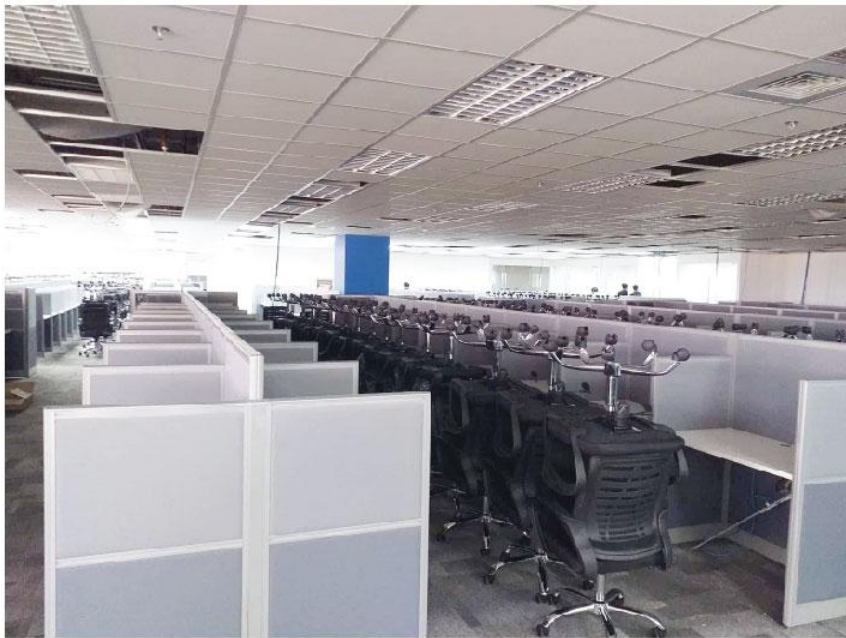






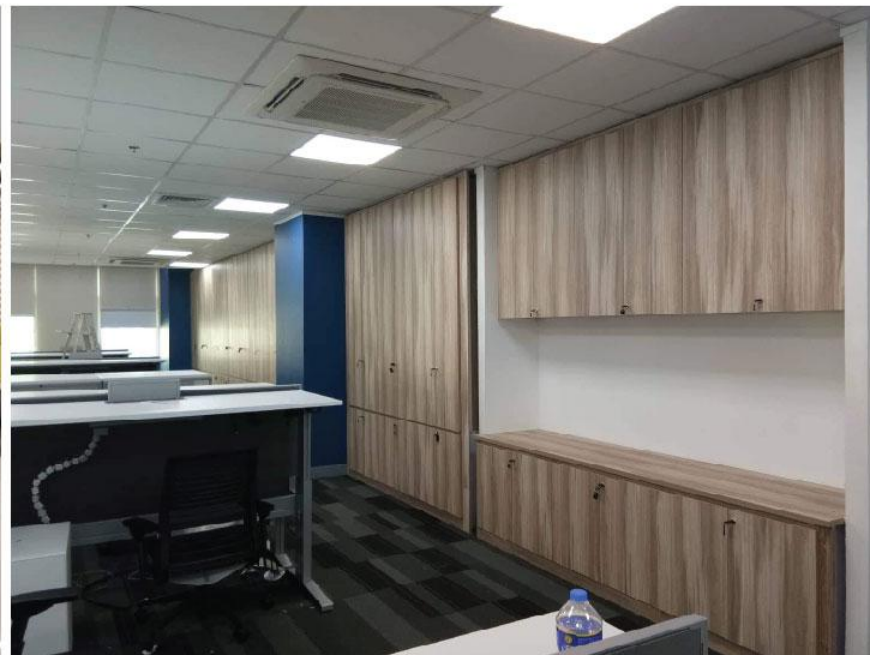




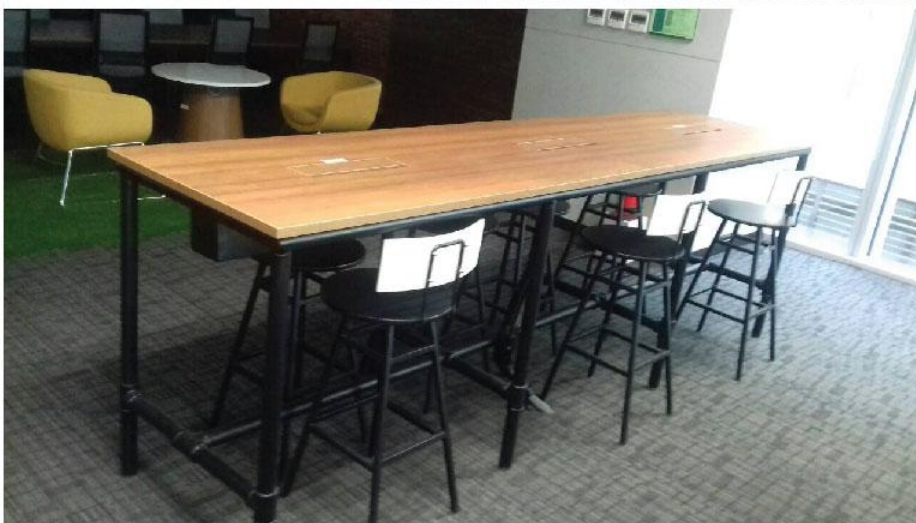




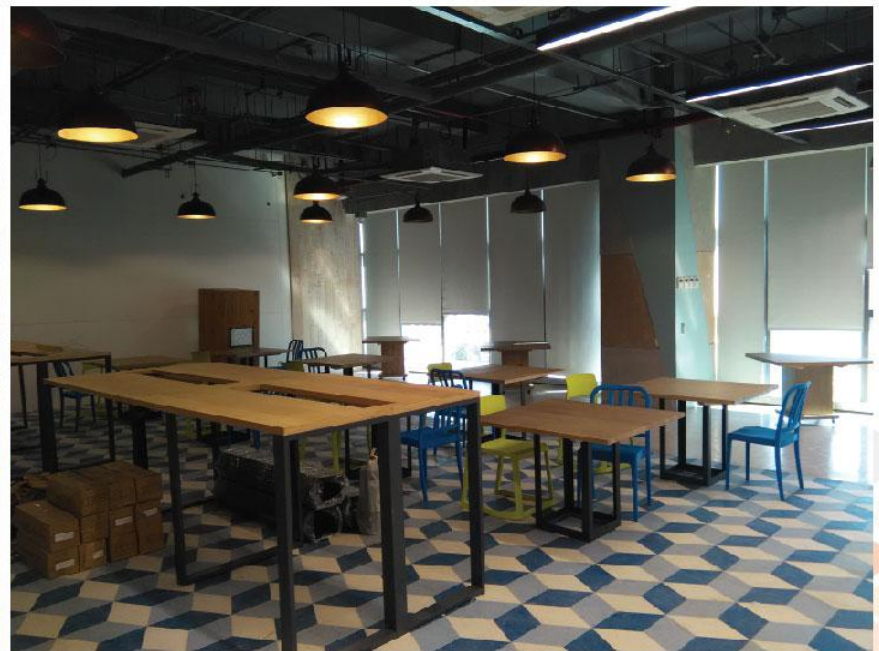
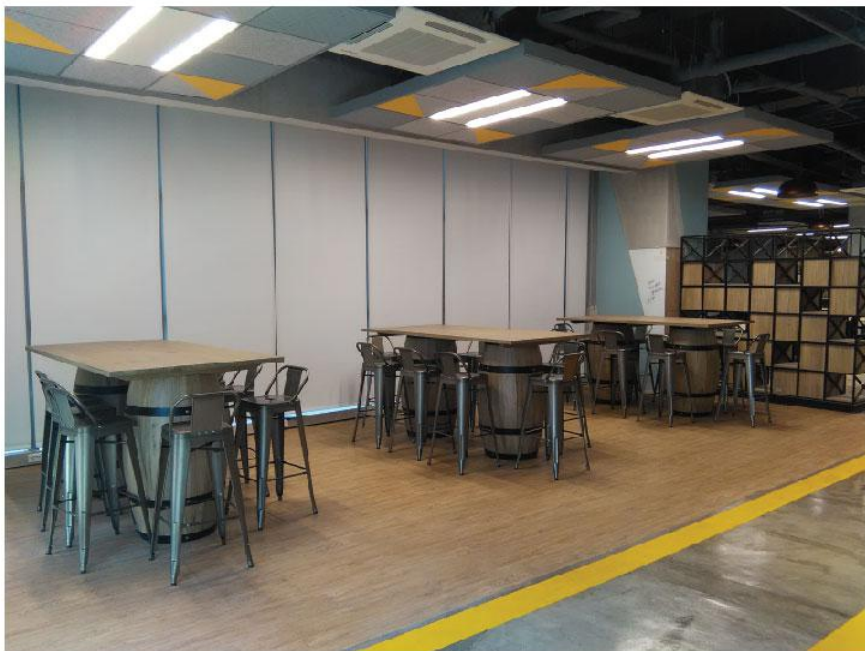


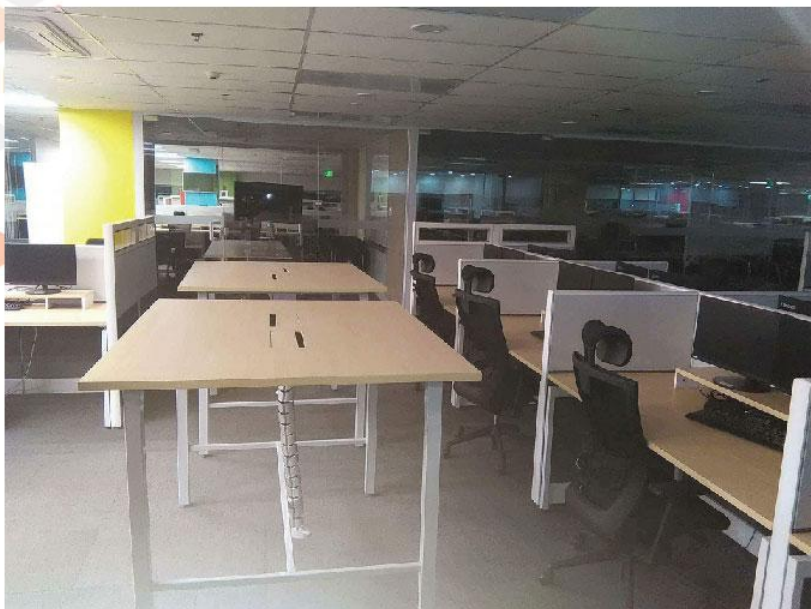


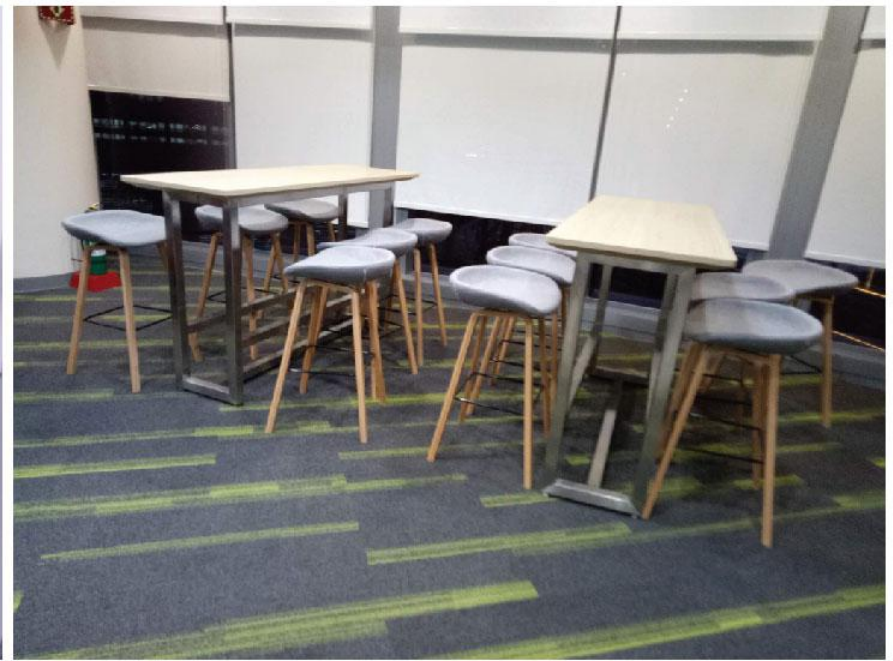






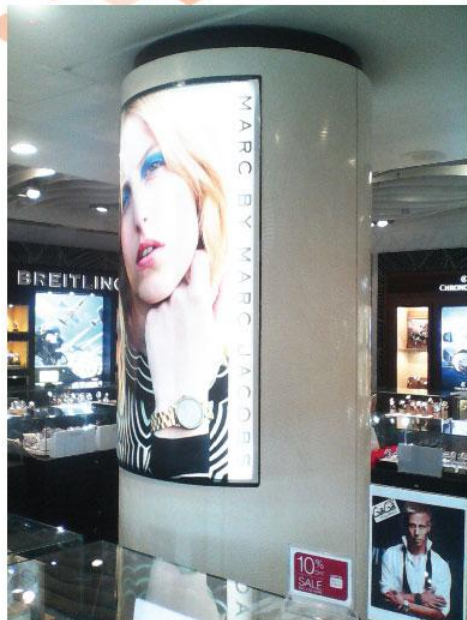


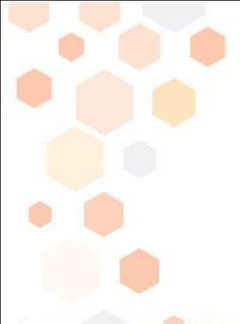












Thank you!

**Visit or contact our
Functionsmith Showroom**

781 Acacia St. Octagon Industrial Estate Subd.,
Brgy. Dela Paz, Pasig City, 1600, Philippines

+632 645-4284 | +632 645-4994
+632 645-2664 | +632 477-0434

www.functionsmith.com



FUNCTIONSMITH, INC.

MANILA • GUANGZHOU