



---

**FUNCTIONSMITH, INC.**

---

MANILA • GUANGZHOU



**FUNCTIONSMITH, INC.**

MANILA • GUANGZHOU



## THE COMPANY

**MANUFACTURER**

**IMPORTER**

**DISTRIBUTOR**

At the turn of the 21st century, in the year 2000, a group of forward thinking individuals gathered and decided to create “functional furniture with a quality of a goldsmith”, to cater to the burgeoning corporate market.

To best embody this philosophy, they took the first and the last words and combined it to form one single word and FUNCTIONSMITH was born.

## MISSION & VISION

FUNCTIONSMITH is geared to become as one of the leaders in the industry by providing the highest quality products, services and cost effective solutions delivered on time. We have fully upgraded our systems and extensively devoted our efforts in training our technical and production personnel to meet global standards. These would also guaranty the utmost efficiency and streamlined operations that would save our clients a lot of time and money.

# PRODUCTS & SERVICES



Office Systems 

Seating 

Joineries 

Storage System 

Powder Coating Services 

Dormitory and Condotel Furniture 

Customized Furniture 







# FUNCTIONSMITH

MANILA • GUANGZHOU

MAIN GATE



SHOW ROOM

## PRODUCTION AREA

\*7,300 sqr. meter plant size







## PRODUCTION AREA

- \*7,300 sq. meter plant size
- \* 300 well trained production workers
- \*Upgraded systems and machineries
  - CNC machine
  - Router
  - Edge bonding machines
  - Complete line of wood working machines



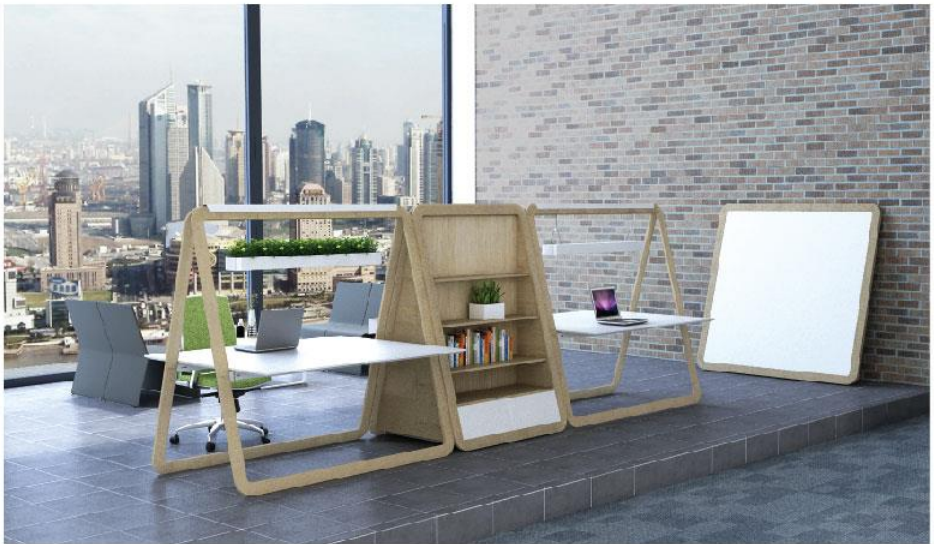


# OFFICE SYSTEMS

TRIMS: K2/ K3/ K6/ P42



# SYSTEMS FURNITURE







# TABLES

Executive/ Meeting/ Conference/ Reception  
Center table/ Accent table/ Side table/ Coffee table



# EXECUTIVE TABLE





# MEETING TABLE





# ▶ CONFERENCE TABLE



# RECEPTION COUNTER



▶ ACCENT TABLE



>> CT-11



>>CT-06







# SEATING

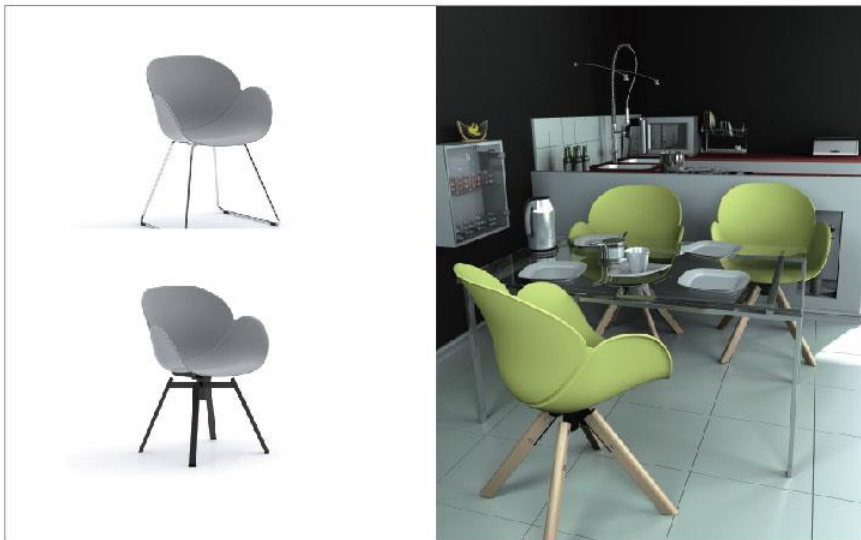
Accent / Bar / Lounge / Sofa / Office

ACCENT CHAIR





# PANTRY CHAIR





▶ LOUNGE CHAIR







# SOFA







# OFFICE CHAIR





# JOINERIES

---



# JOINERIES





# STORAGE SOLUTION

Mobile pedestal drawer/ Lateral filing cabinet/ Compactor





# **DORMITORY & CONDOTEL FURNITURE**



# CONDOTEL FURNITURE







# 9to5<sup>®</sup>

seating



HIGH  
QUALITY



VERTICALLY  
INTEGRATED



CUSTOM MADE



LIFETIME  
WARRANTY

DISTRIBUTED BY



**FUNCTIONSMITH, INC.**

MANILA • GUANGZHOU

EXCLUSIVE  
DISTRIBUTOR

9to5 Seating is a privately owned, vertically-integrated company, specializing in the design and production of ergonomic office seating to accommodate the rigorous demands of today's office environments. 9to5 Seating presents an extensive collection of executive, task, side, conference and stool seating. Seat, control, arm, chair adjustment, finish and fabric options are plentiful.

Customer customization is an everyday demand that 9to5 Seating welcomes.





# STOC

## OFFICE SYSTEMS

Designers exclusive copyright,  
income rights

All of STOC's designers independently enjoy product copyrights, intellectual products, and copyrights of their products, thereby increasing the designer's revenue and ensuring the continued advantages of the product life cycle.

3D laser seamless edge banding technology

STOC hopes that every good design and work will become a vivid product and a quality experience.



### FUNCTIONSMITH

MANILA • GUANGZHOU

EXCLUSIVE  
DISTRIBUTOR







DISTRIBUTED BY



Accent Laminate offers a broader range of looks than ever before. Transform spaces with our modern laminates that are as beautiful as they are durable. Mix and match solids, graphic patterns and finishes. Achieve the look you want for any design challenge or budget





# BITTO®

**Absolute quartz surfaces**  
**100% acrylic solid surfaces**

DISTRIBUTED BY



## 100% Acrylic Solid Surface:

High flexural strength of Bitto 100% Acrylic solid surface reaches 42.6pma, over the solid surface 's standard 40pma.

## Ingredients of Polyester Solid Surfaces:

40% UPR (unsaturated polyester resins) +  
56% ATH (aluminium hydroxide, the material of making toothpaste) +  
4% pigments & granule & auxiliary material.

Bitto Polyester Solid Surfaces is a kind of hard artificial stone, and excellent option for color, pattern, texture and finish.

There are many color and style options with beauty and durability.



SGS





gruppo  
**mastrotto**

*Italian Pure Leather*

*world leader in leather production*

**Type of Leathers:**

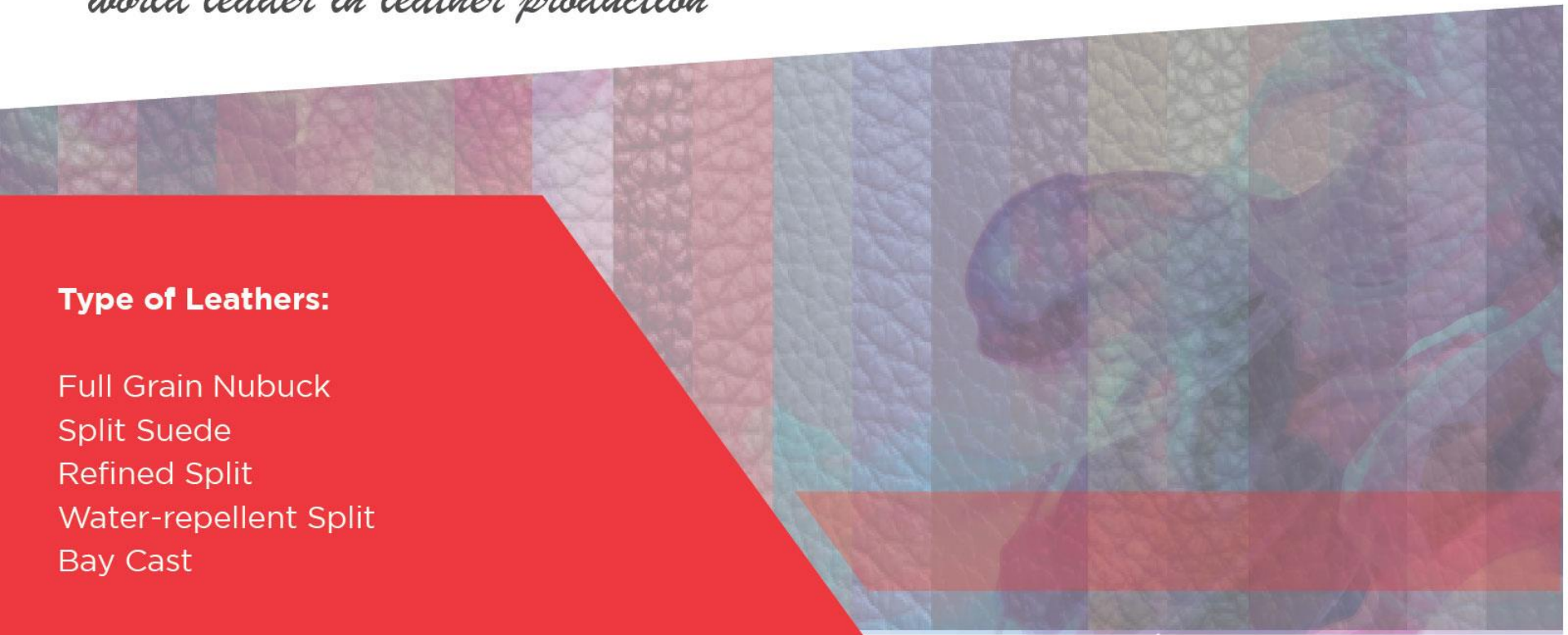
Full Grain Nubuck

Split Suede

Refined Split

Water-repellent Split

Bay Cast





● ● ●  
**COMPANY AFFILIATES**



**FUNCTIONSMITH  
INDUSTRIAL DIVISION**



**HIGH PRESSURED  
LAMINATES**



**POWDER COATING  
SERVICES**

# TOP PROJECTS COMPLETED



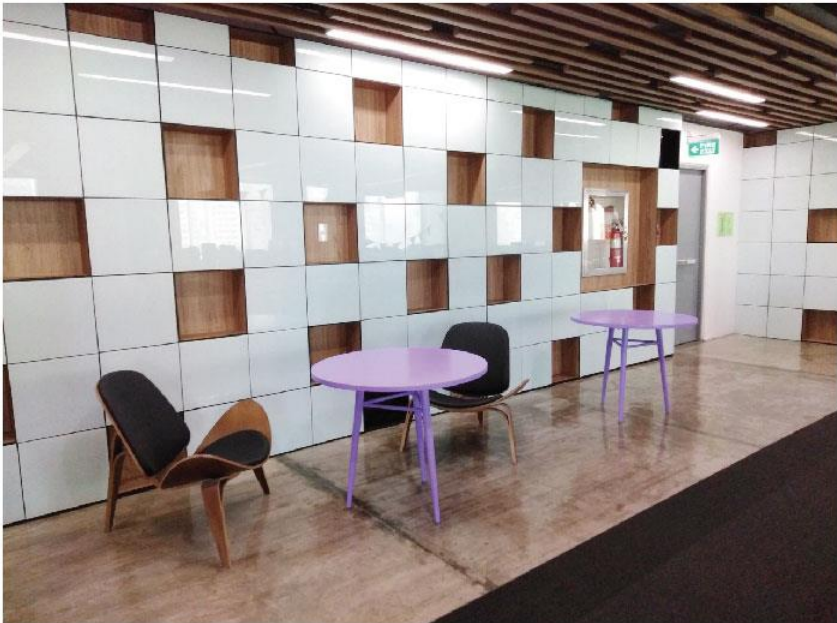




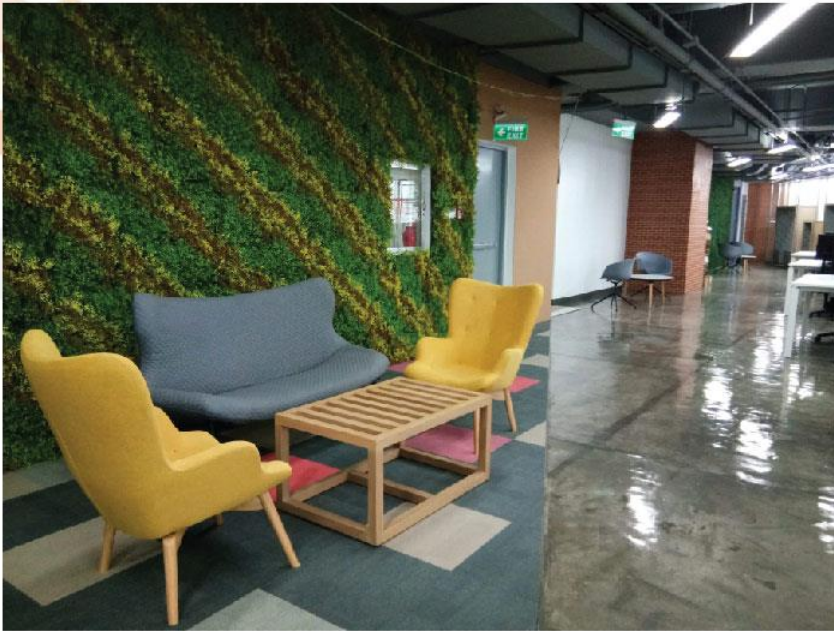








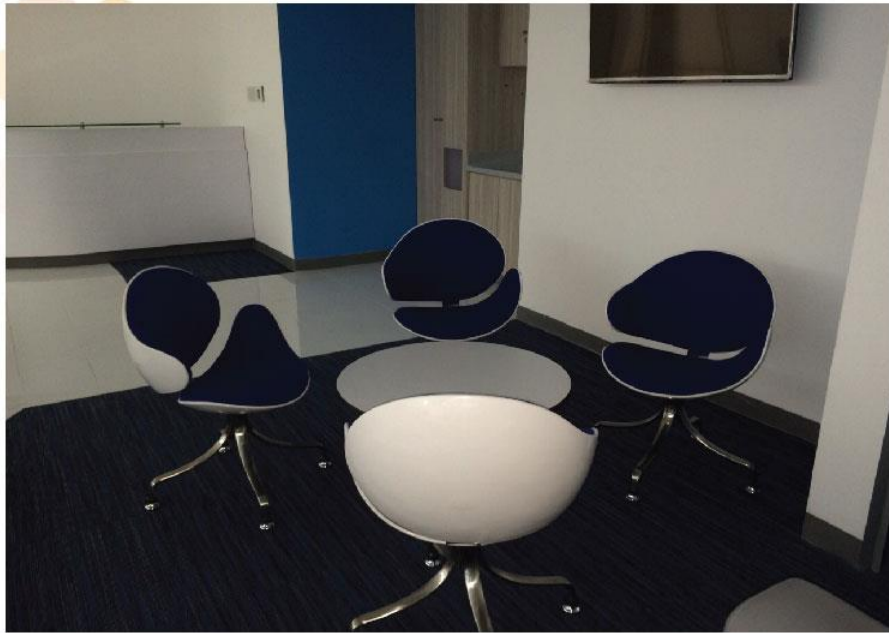




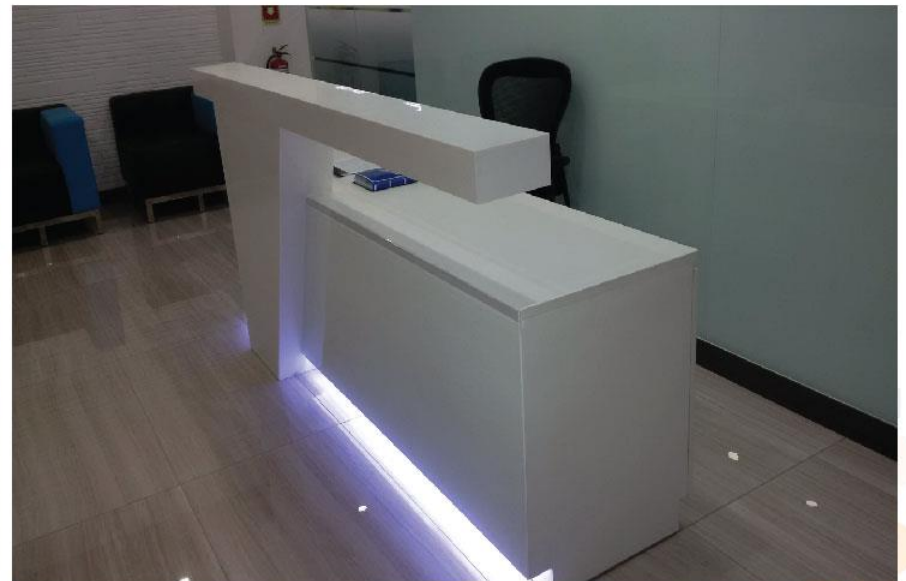
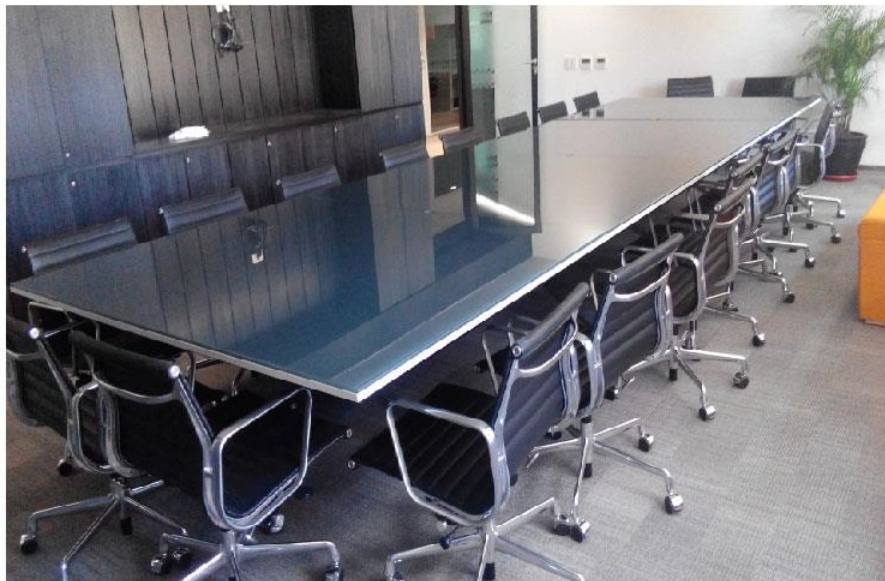
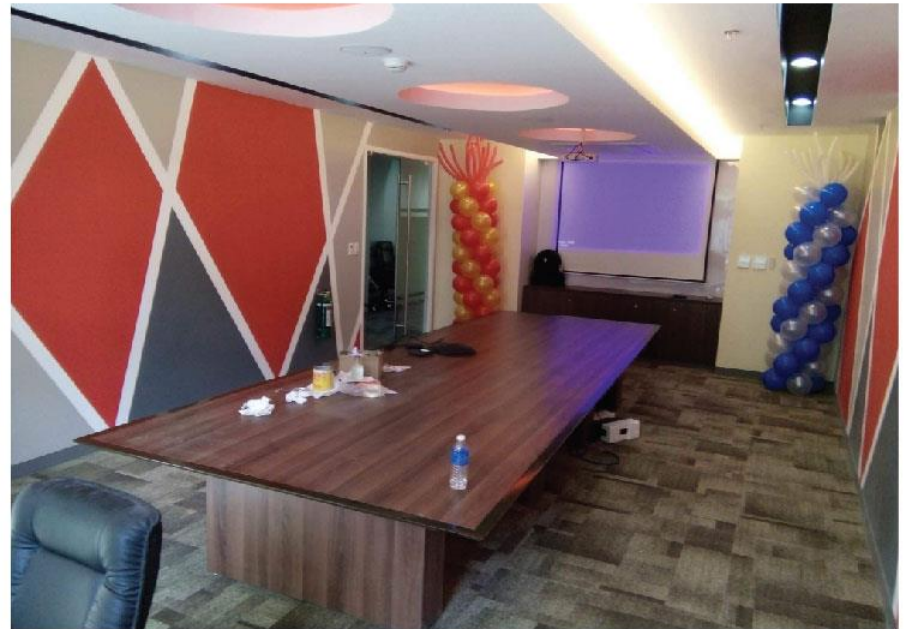










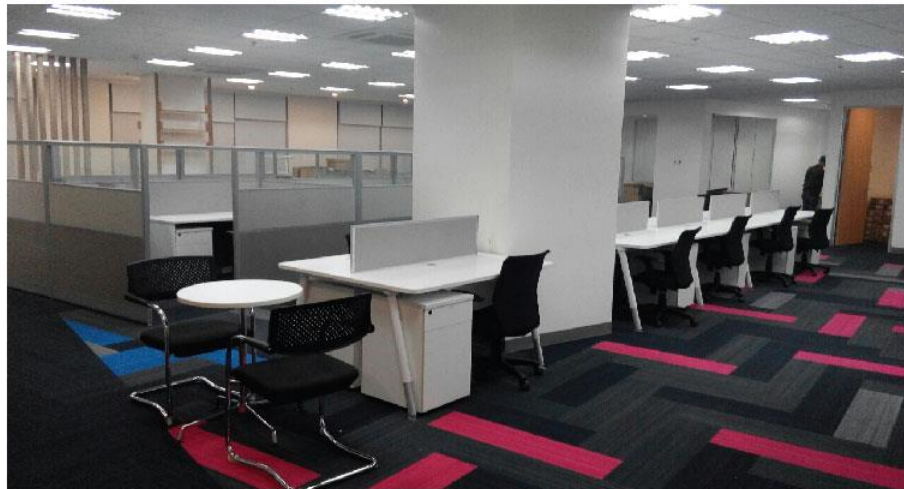






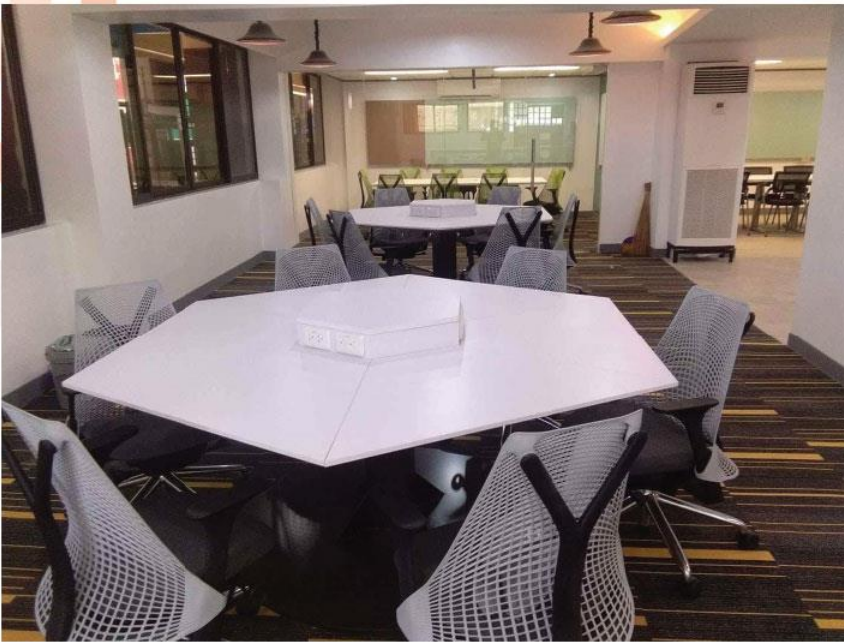




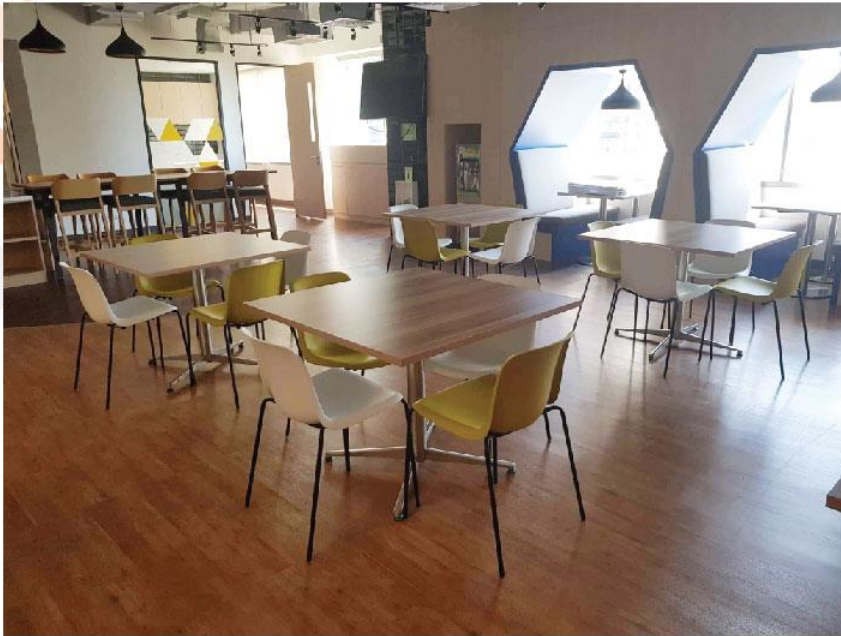










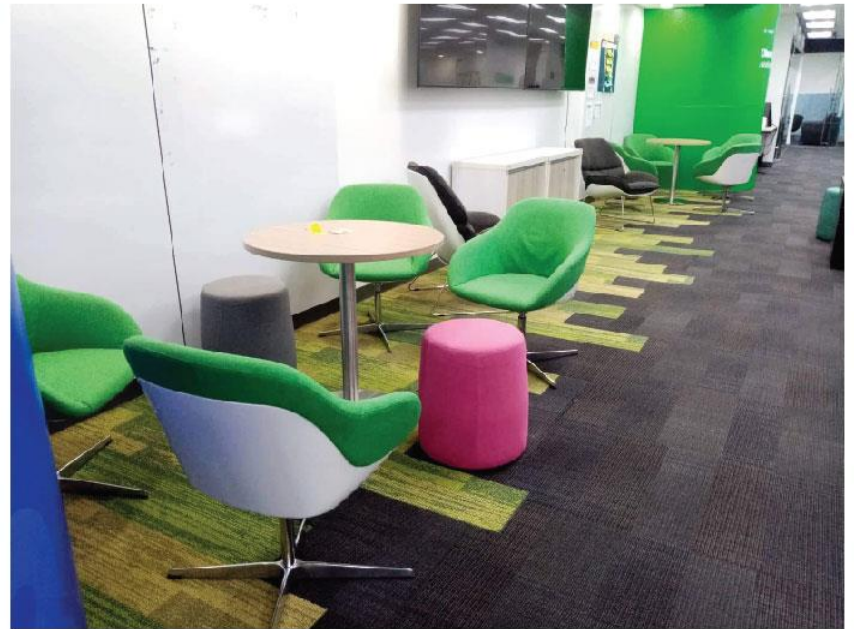


















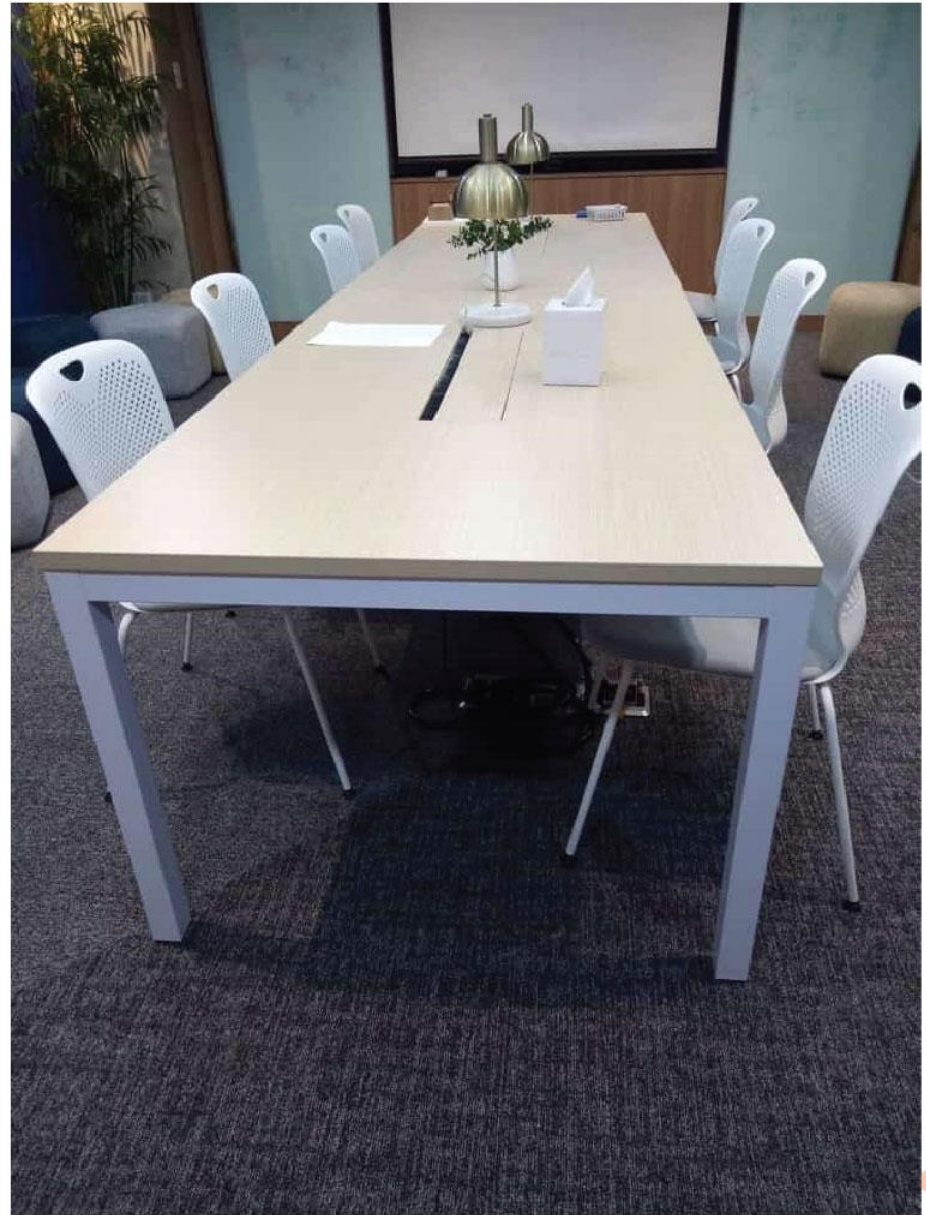


















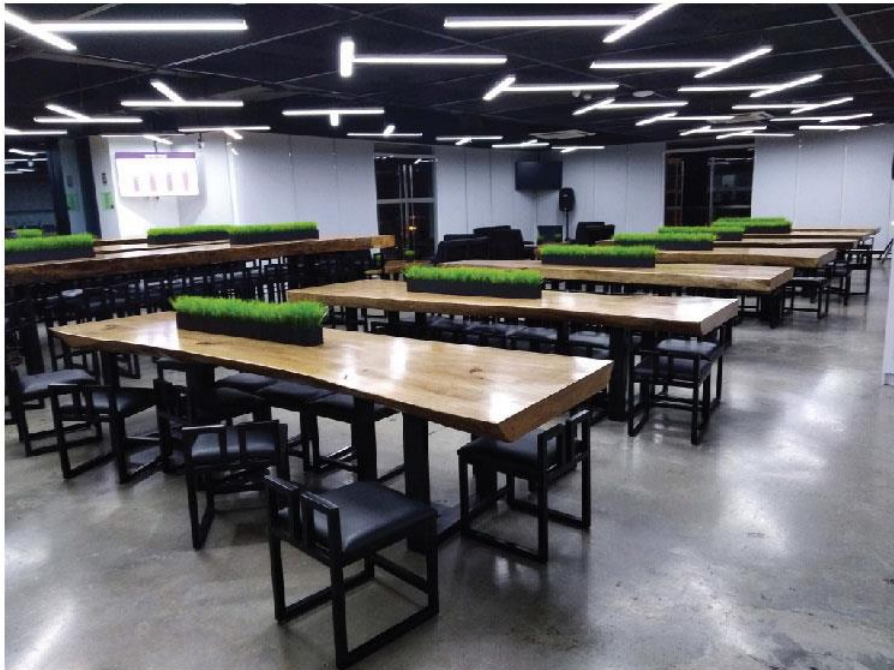








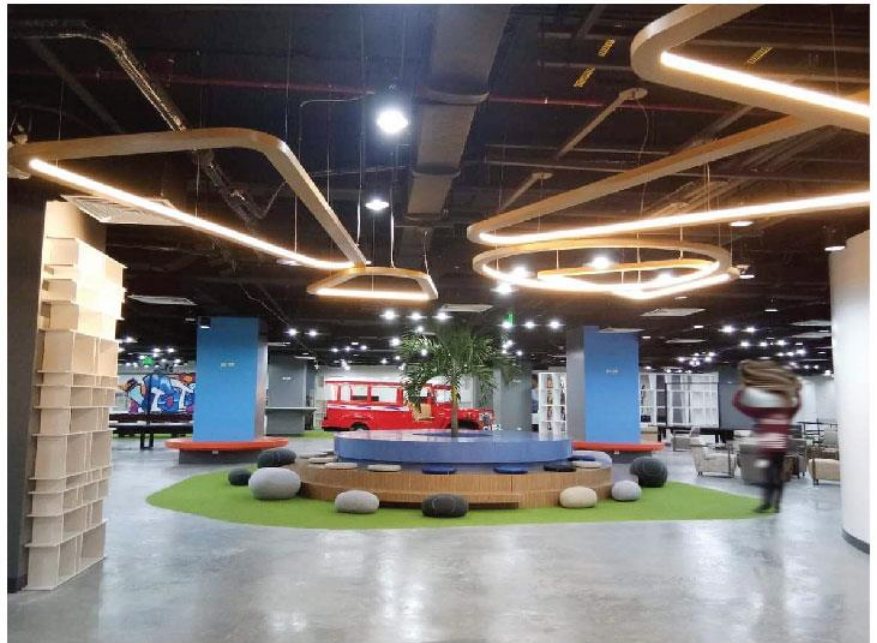










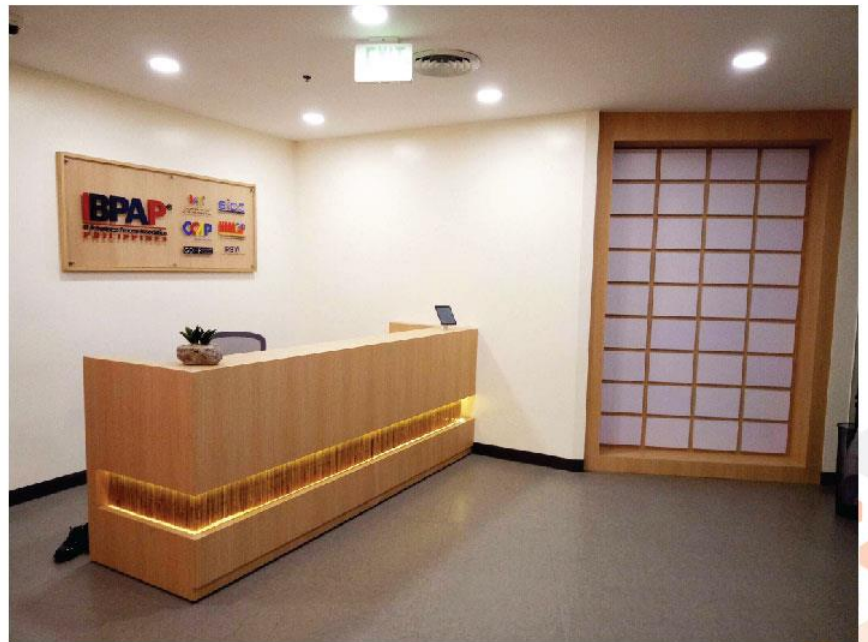




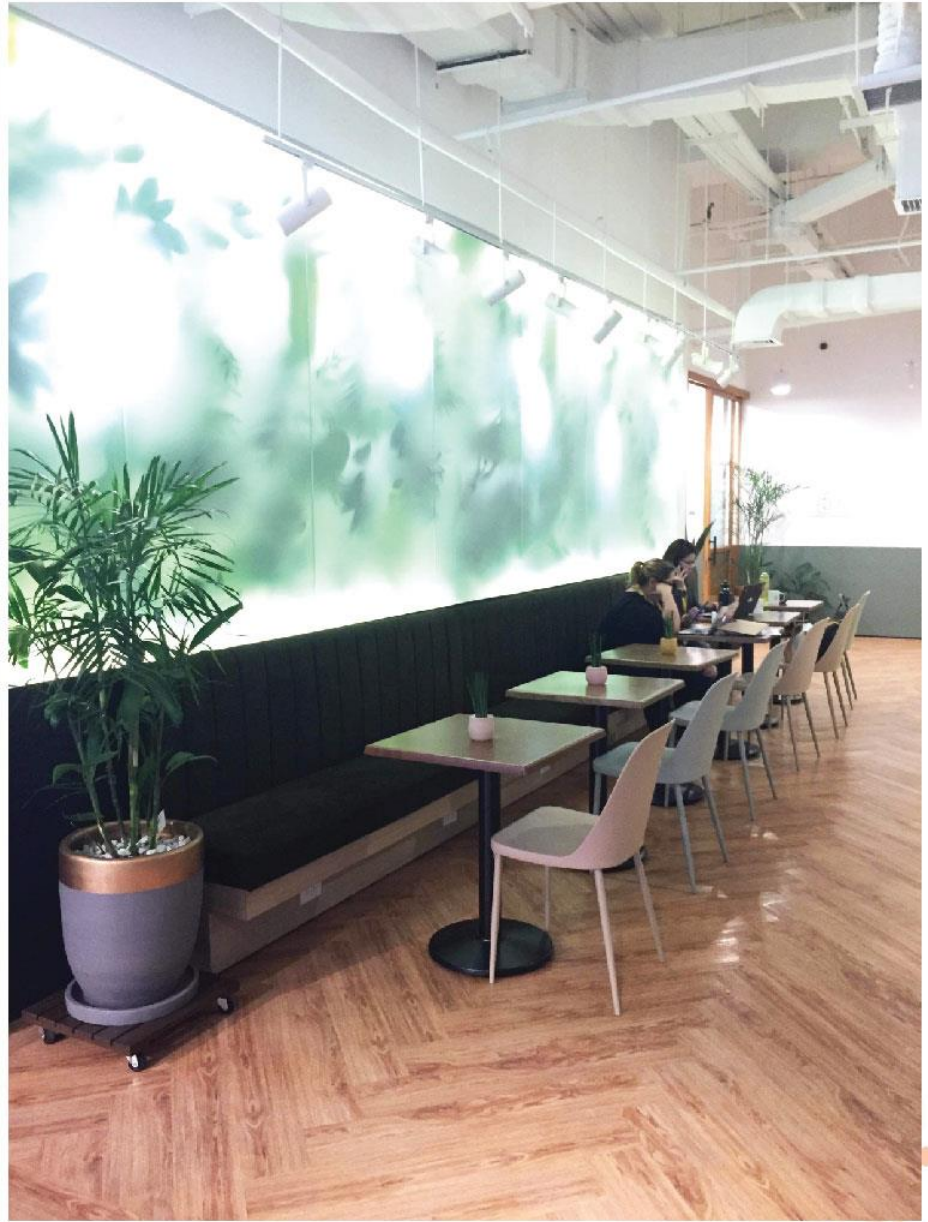








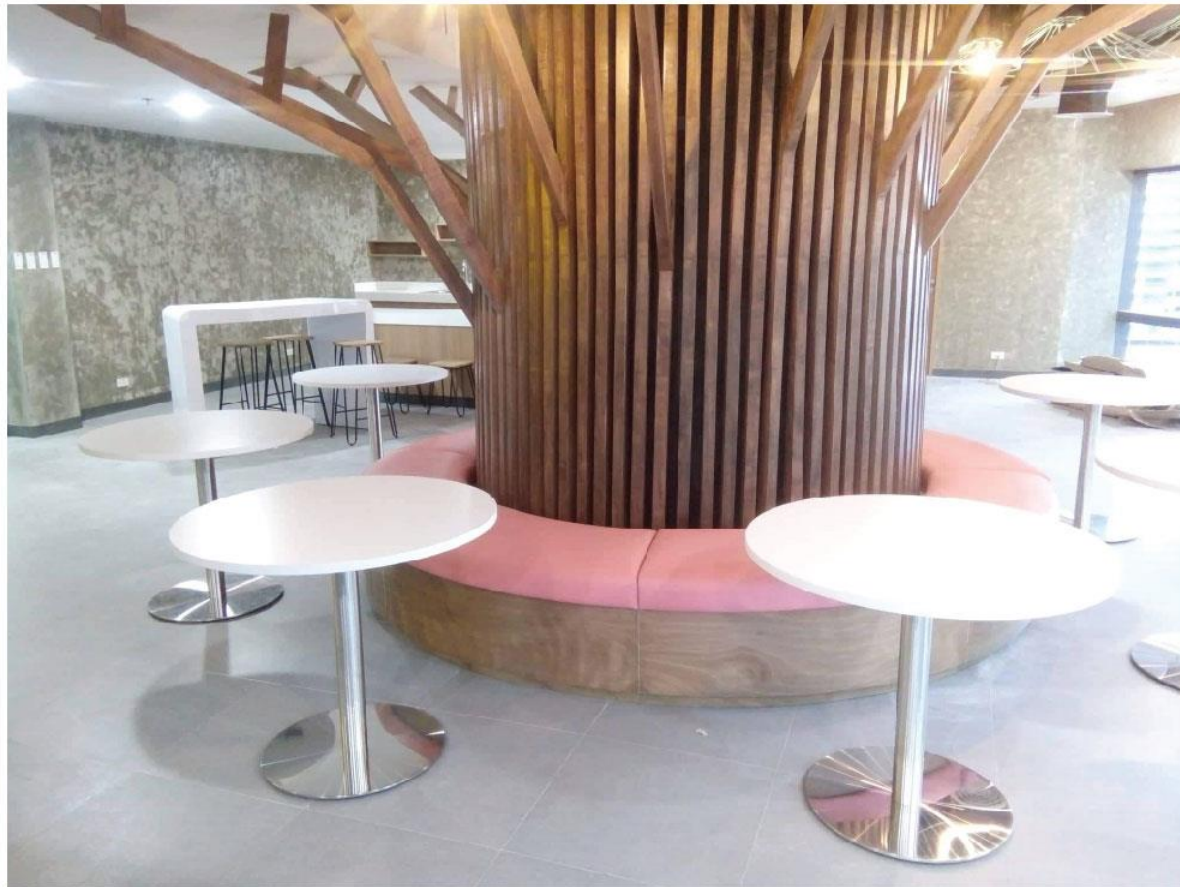
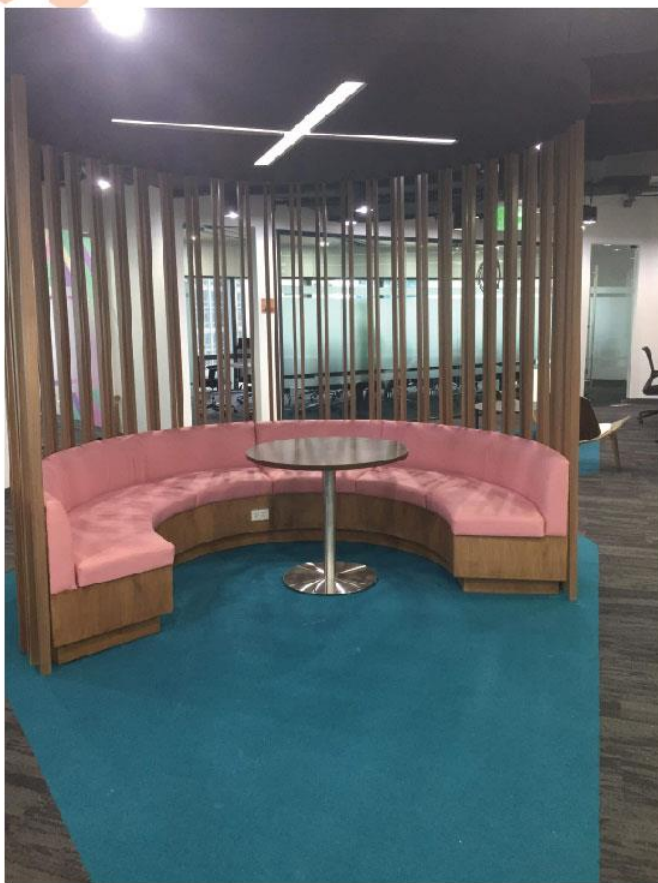




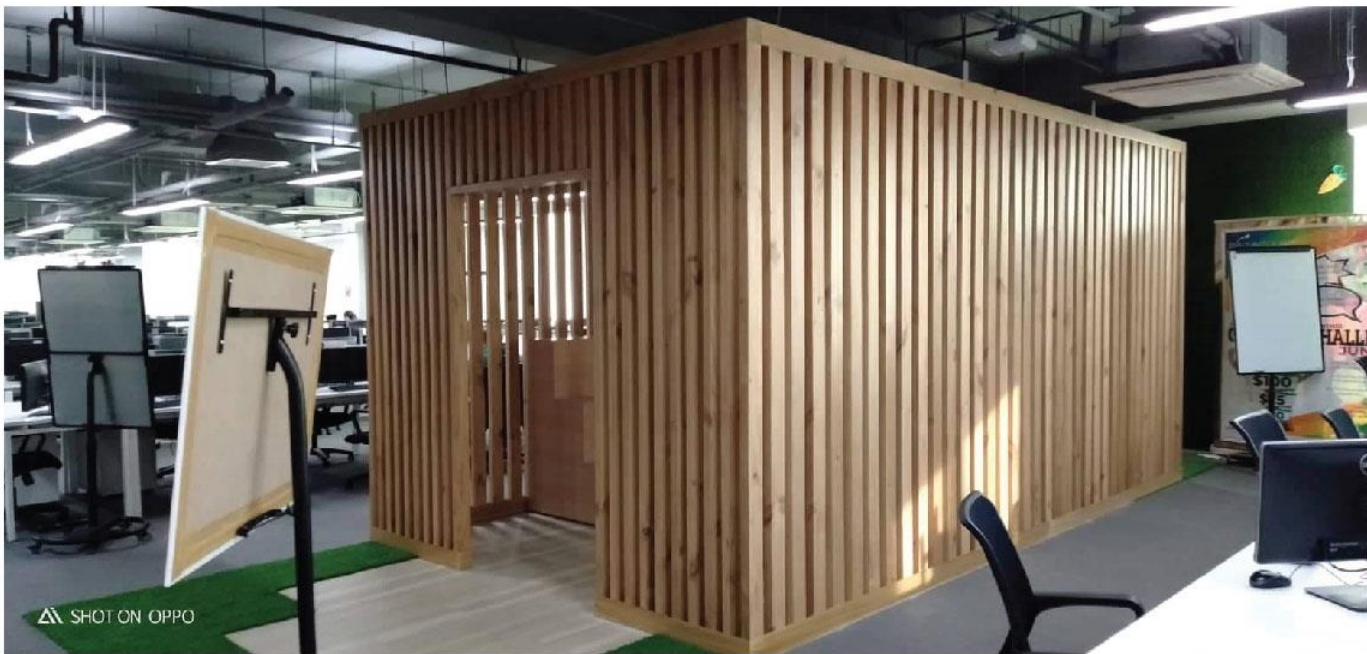


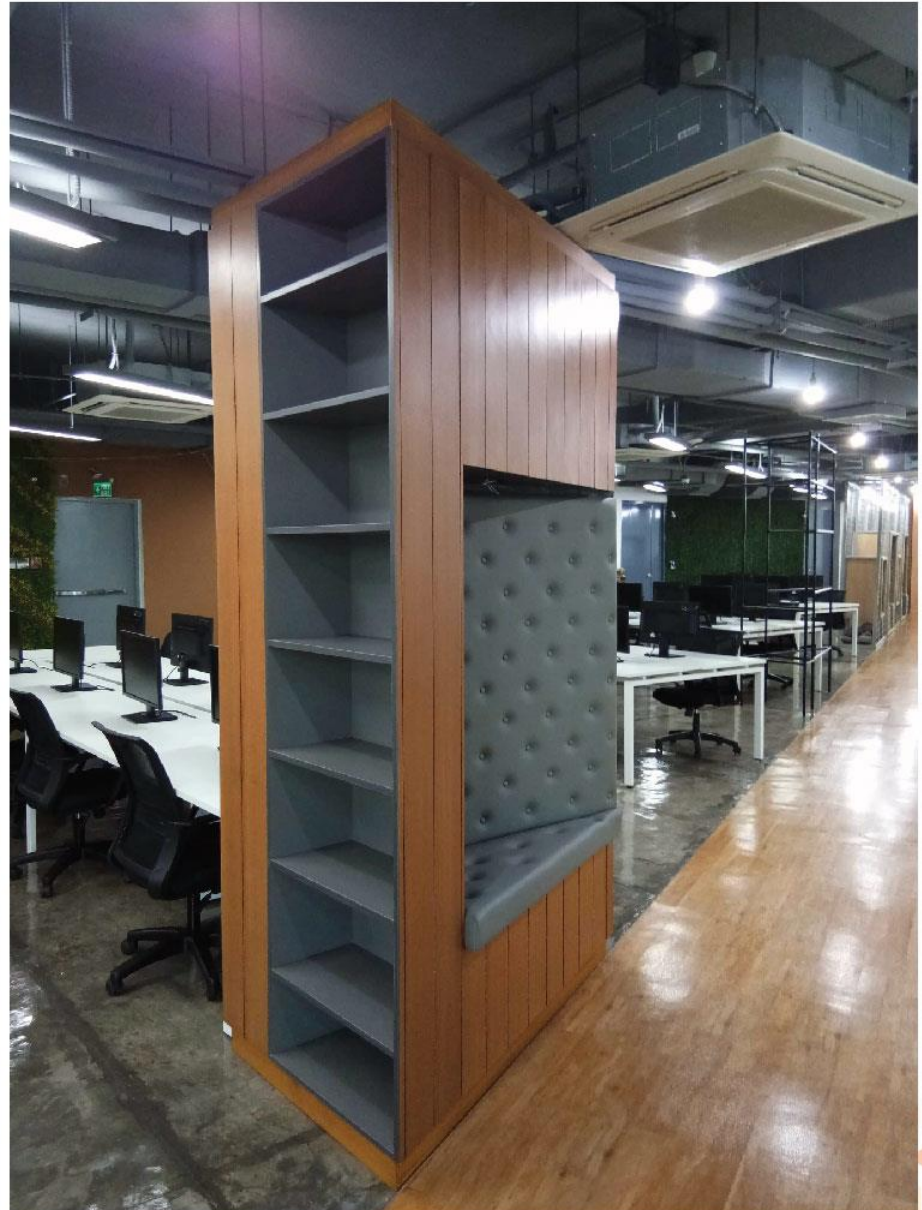








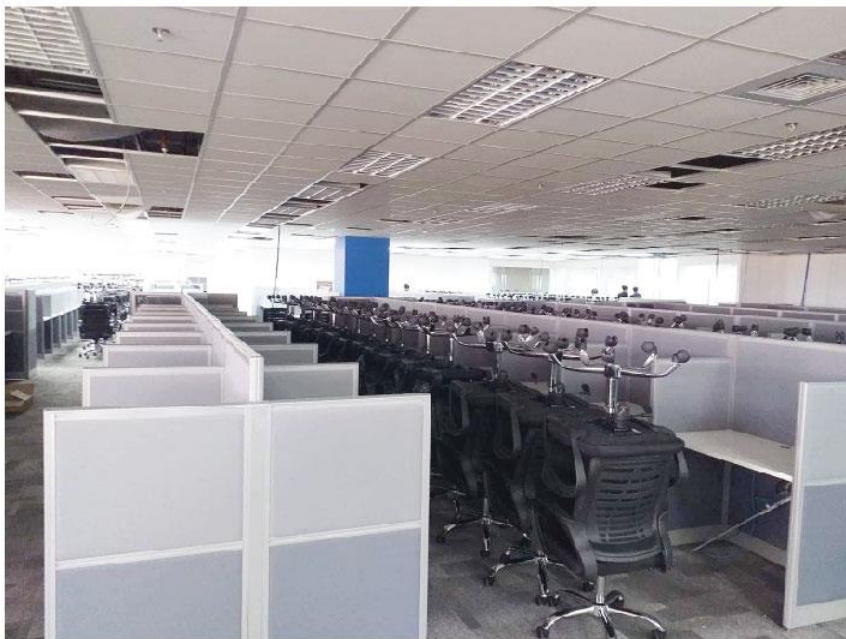










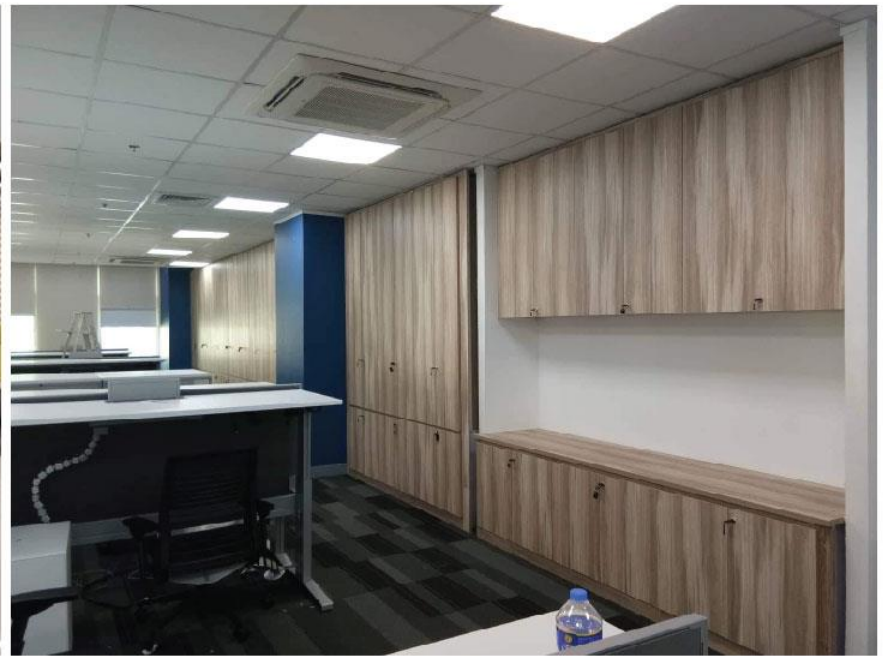


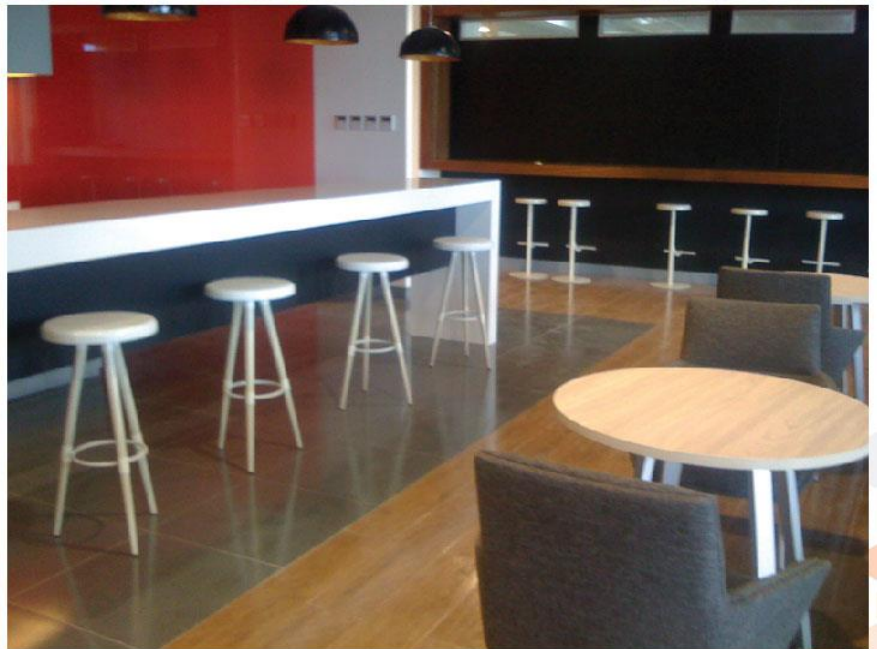
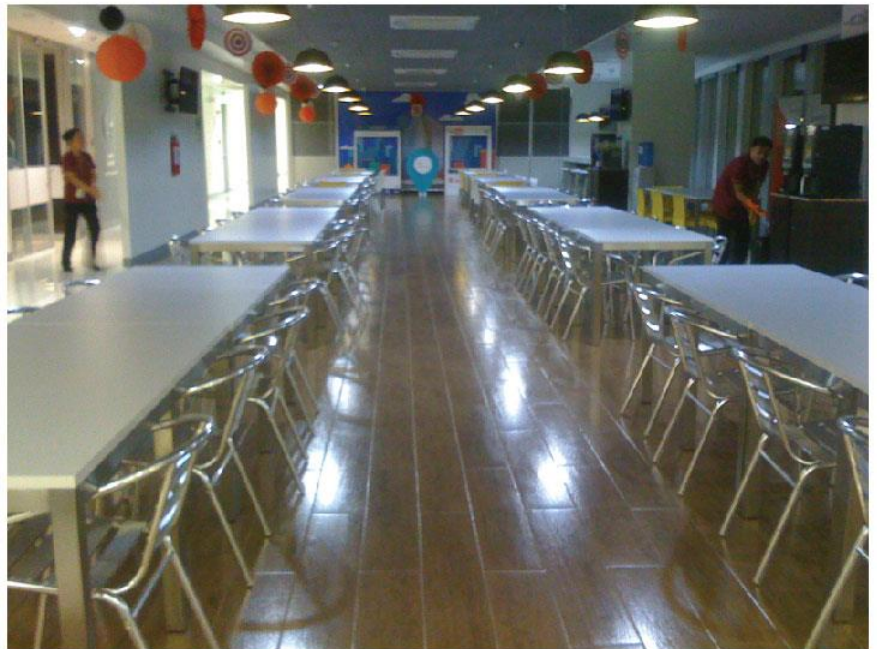




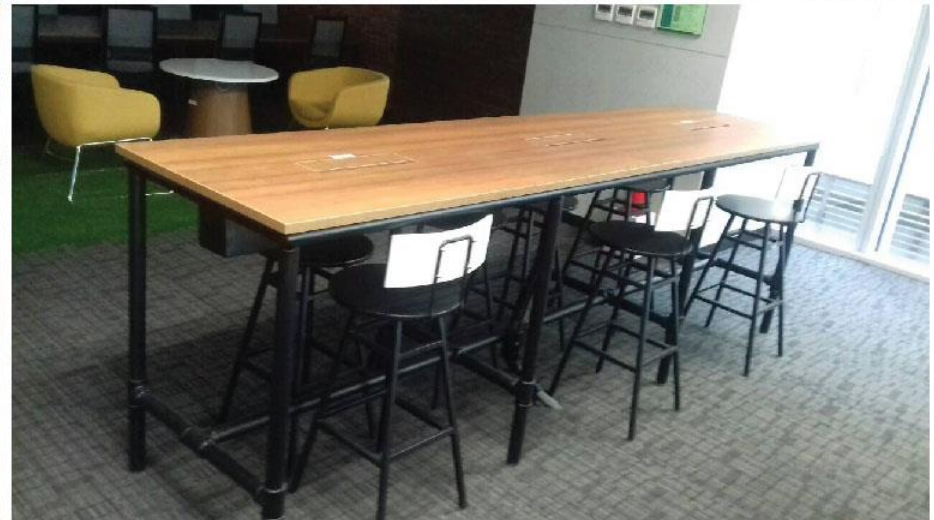
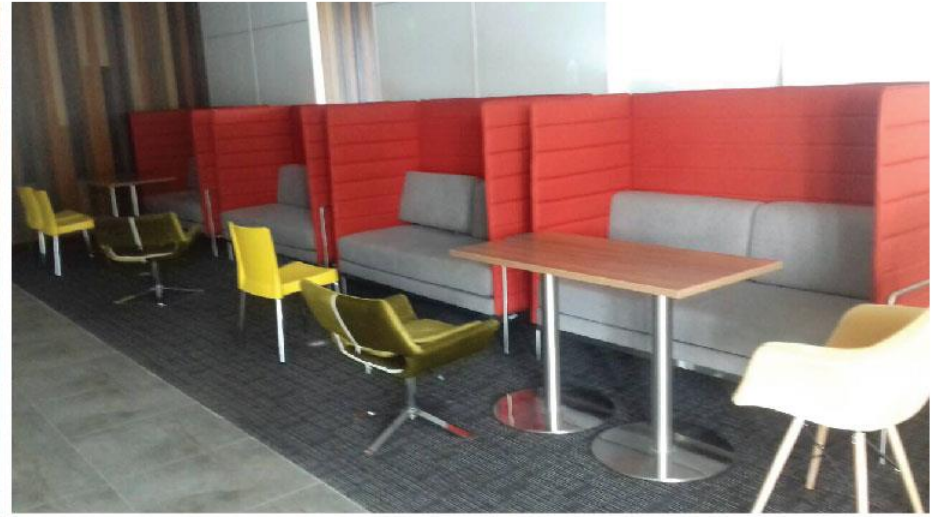








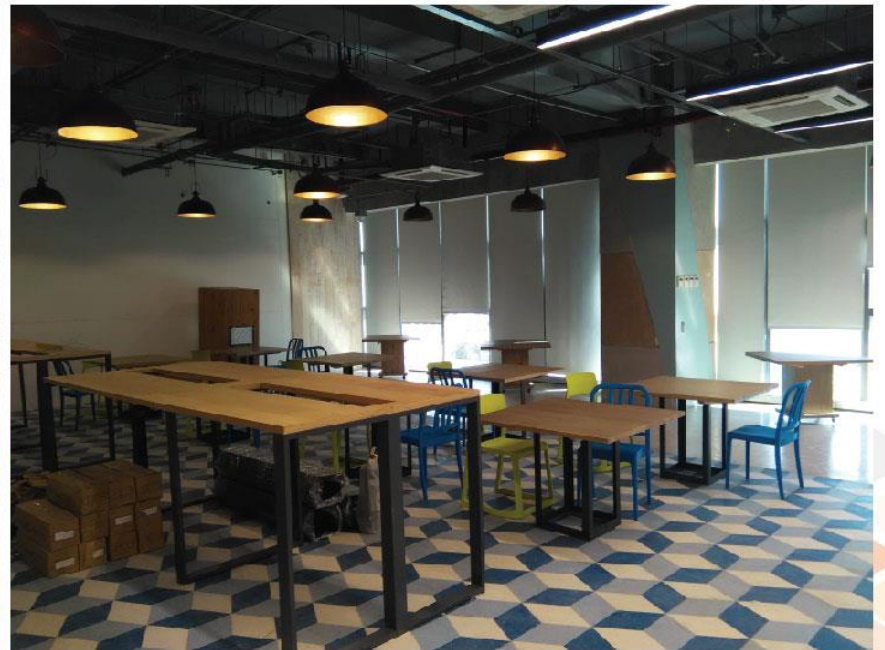
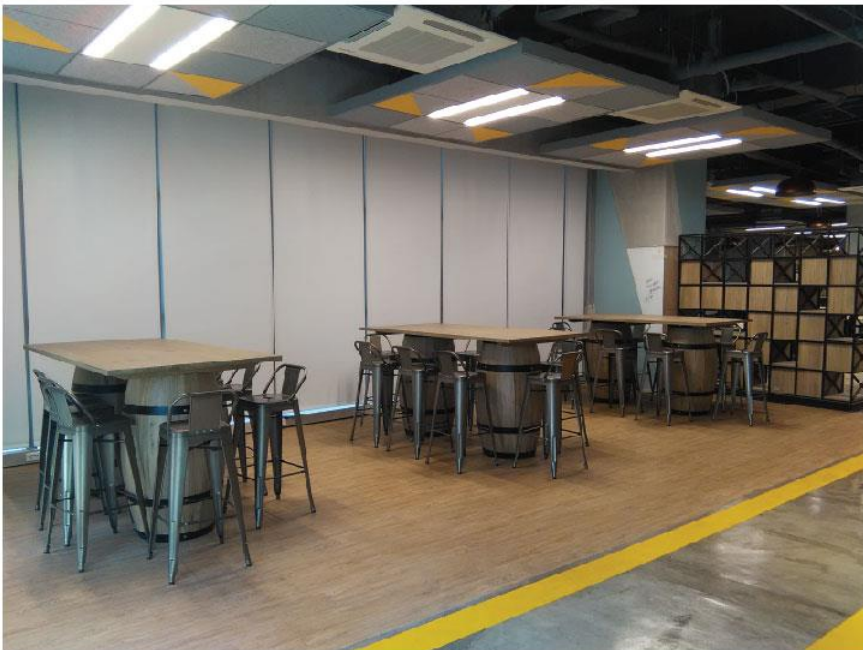




















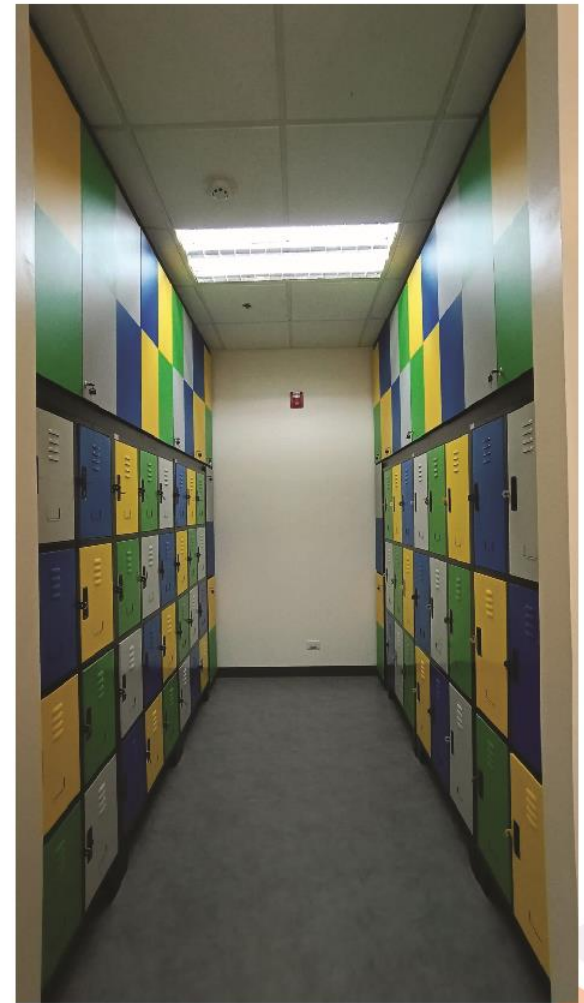




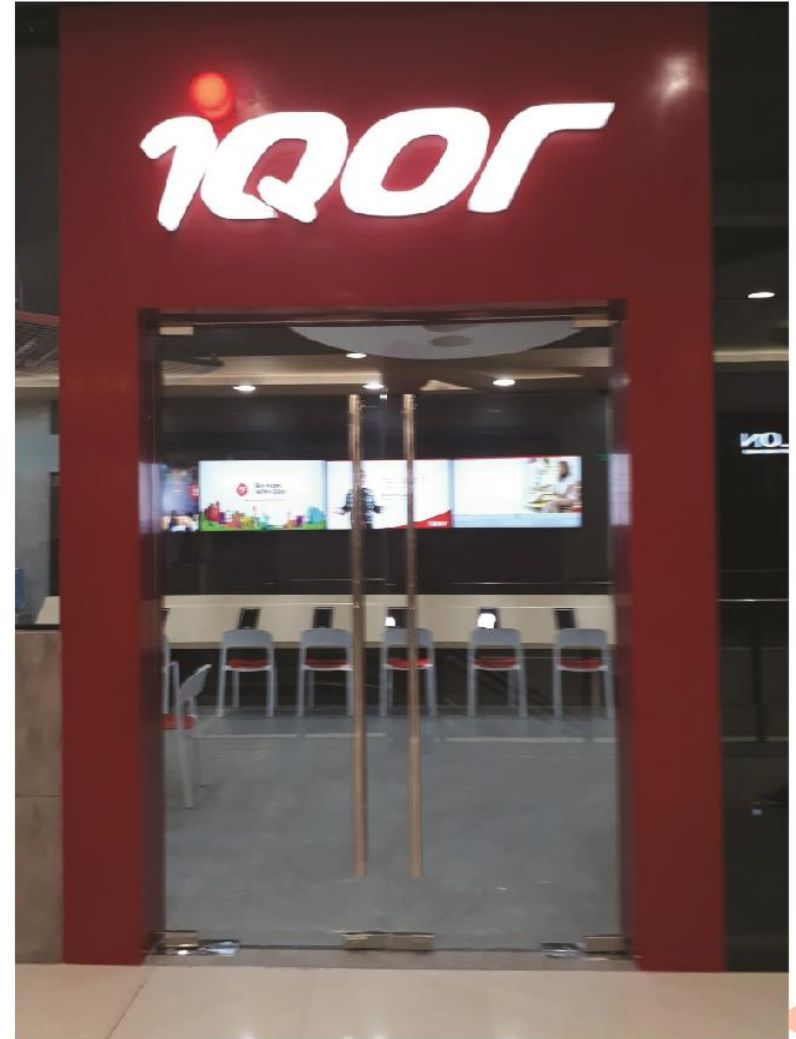












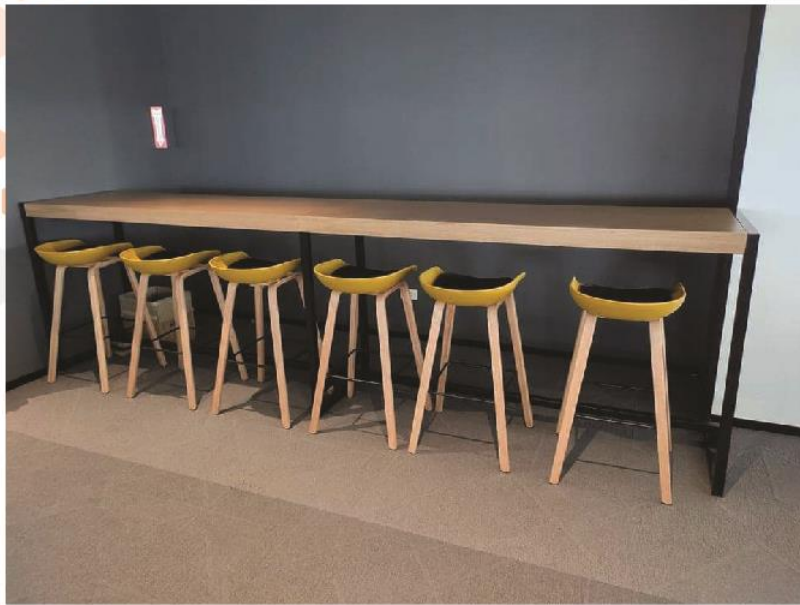




































# Thank you!

Visit or contact our  
Functionsmith, Inc. Showroom

# 779 Acacia St. Octagon Industrial Estate Subd.,  
Brgy. Dela Paz, Pasig City, 1600, Philippines

+632 8645-4994 | +632 8941-2647  
+632 8477-0434 | +632 8941-2655



**FUNCTIONSMITH, INC.**

MANILA • GUANGZHOU

[www.functionsmith.com](http://www.functionsmith.com)