

@ Black Diamond Slope (hard)

@ Intermediate Slope (medium)

@ Rope Tow (easy)

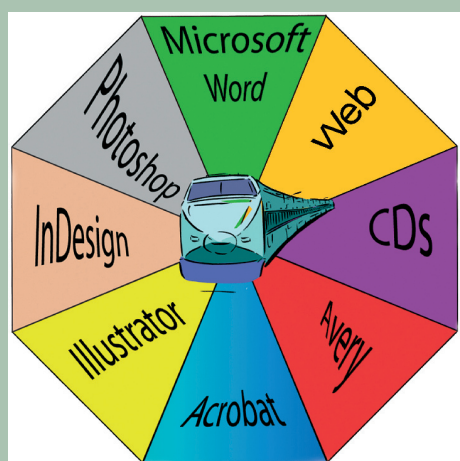
**@Print set 29: Print sets book w/
Cover** (See sample Print Sets I Book)

Readying your Book to print

1. Set up paper

This print set is for 8.5 x 11 paper with the cover is 80# Matte Coated and the pages are 24 wt. Set cover paper into bypass tray and the pages (20 wt.) into tray 1. The paper will only fold and staple when it pulls from the landscape orientation (from the printer's standpoint) and when it thinks that it is folding 'plain' paper. The CD was printed and reproduced using Epson.

2. Computer Printer Settings



@ Black Diamond Slope (hard)

@ Intermediate Slope (medium)

@ Rope Tow (easy)

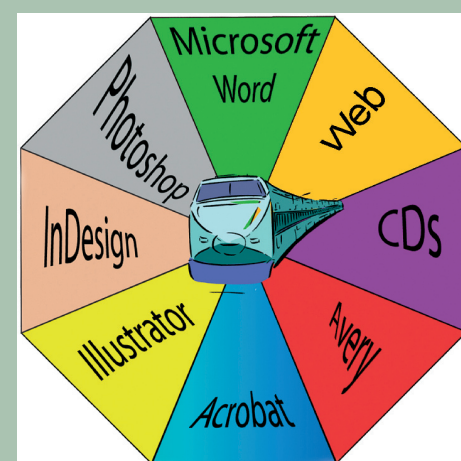
**@Print set 29: Print sets book w/
Cover** (See sample Print Sets I Book)

Readying your Book to print

1. Set up paper

This print set is for 8.5 x 11 paper with the cover is 80# Matte Coated and the pages are 24 wt. Set cover paper into bypass tray and the pages (20 wt.) into tray 1. The paper will only fold and staple when it pulls from the landscape orientation (from the printer's standpoint) and when it thinks that it is folding 'plain' paper. The CD was printed and reproduced using Epson.

2. Computer Printer Settings



@ Black Diamond Slope (hard)

@ Intermediate Slope (medium)

@ Rope Tow (easy)

**@Print set 29: Print sets book w/
Cover** (See sample Print Sets I Book)

Readying your Book to print

1. Set up paper

This print set is for 8.5 x 11 paper with the cover is 80# Matte Coated and the pages are 24 wt. Set cover paper into bypass tray and the pages (20 wt.) into tray 1. The paper will only fold and staple when it pulls from the landscape orientation (from the printer's standpoint) and when it thinks that it is folding 'plain' paper. The CD was printed and reproduced using Epson.

2. Computer Printer Settings

File>Print

>Copies 1
 >Pages 1
 >Go to under the blue title>General
 >Set up
 >Paper size 8.5x11
 >Orientation>Portrait
 >Check constrain proportions
 >Page position>Center

>go to Set up

>Preferences

Basic screen

Original Size 8.5 X 11
 Paper Size Same as Original
 Mode Landscape
 Zoom Auto
 Paper Tray 1

Change tray settings

(button to the right of the drawer 1)

Paper tray

>Paper Settings for each tray

>Tray/Paper Type

>Select the tray in use #1

>Plain paper

and

>Select the tray in use Bypass

>Plain paper

Output Method Print

Lay out: Print type > 2 sided (Duplex)
 Print position
 >Top bind

Binding Position: Center Fold and Staple**Finish:** None

Cover Mode: Front cover
 >Print
 >From bypass drawer
 >Paper type>Plain

Stamp/Composition: None**Quality:** Document/ Full Color**3. Printer Screen (on the Cm5520)**

File>Print

>Copies 1
 >Pages 1
 >Go to under the blue title>General
 >Set up
 >Paper size 8.5x11
 >Orientation>Portrait
 >Check constrain proportions
 >Page position>Center

>go to Set up

>Preferences

Basic screen

Original Size 8.5 X 11
 Paper Size Same as Original
 Mode Landscape
 Zoom Auto
 Paper Tray 1

Change tray settings

(button to the right of the drawer 1)

Paper tray

>Paper Settings for each tray

>Tray/Paper Type

>Select the tray in use #1

>Plain paper

and

>Select the tray in use Bypass

>Plain paper

Output Method Print

Lay out: Print type > 2 sided (Duplex)
 Print position
 >Top bind

Binding Position: Center Fold and Staple**Finish:** None

Cover Mode: Front cover
 >Print
 >From bypass drawer
 >Paper type>Plain

Stamp/Composition: None**Quality:** Document/ Full Color**3. Printer Screen (on the Cm5520)**

File>Print

>Copies 1
 >Pages 1
 >Go to under the blue title>General
 >Set up
 >Paper size 8.5x11
 >Orientation>Portrait
 >Check constrain proportions
 >Page position>Center

>go to Set up

>Preferences

Basic screen

Original Size 8.5 X 11
 Paper Size Same as Original
 Mode Landscape
 Zoom Auto
 Paper Tray 1

Change tray settings

(button to the right of the drawer 1)

Paper tray

>Paper Settings for each tray

>Tray/Paper Type

>Select the tray in use #1

>Plain paper

and

>Select the tray in use Bypass

>Plain paper

Output Method Print

Lay out: Print type > 2 sided (Duplex)
 Print position
 >Top bind

Binding Position: Center Fold and Staple**Finish:** None

Cover Mode: Front cover
 >Print
 >From bypass drawer
 >Paper type>Plain

Stamp/Composition: None**Quality:** Document/ Full Color**3. Printer Screen (on the Cm5520)**

- **Glorybound Publication for Business**
- **Print Set 1-9** \$99.95
- **Pattern Set 1-9** \$99.95
- Individual Print Sets 1-200 \$14.95
- Individual Pattern Sets 1-200 © *Released* \$14.95
- Combined Individual Print/Pattern Sets 1-200
- © *Released* \$25.00 per set

Combined Pattern and Print Sets in Groups

- Just Books \$250.00
- Just Books 2 \$250.00
- Just Stickers, Cards & Barcodes \$250.00
- Just Stickers, Cards & Barcodes 2 \$250.00
- Just CDs \$250.00
- Just Sales & Advertising \$250.00
- Just Sales & Advertising 2 \$250.00
- Just Sales & Advertising 3 \$250.00

To Help Your Presentation Print/Patterns

- Impressive Presentation \$99
- Logo Your Bag \$99
- Toddler Play \$99
- Menu a Go Go \$99
- Designer Receipts \$99
- Front Desk Presentation \$99
- Birthday Fun \$99
- Impossible Papers (till now) \$99

Print Sets give information on how to program the software and the printer, where to put the paper and how to correlate them all.

Pattern Sets give the pattern for the specific item so that it may be changed to meet your needs.

702-896-1776 www.gblasertrain.com

Digital Book Publishing

*Catch the Laser train
by Sheri Hauser*

Helping authors help themselves.

\$19.95

- **Glorybound Publication for Business**
- **Print Set 1-9** \$99.95
- **Pattern Set 1-9** \$99.95
- Individual Print Sets 1-200 \$14.95
- Individual Pattern Sets 1-200 © *Released* \$14.95
- Combined Individual Print/Pattern Sets 1-200
- © *Released* \$25.00 per set

Combined Pattern and Print Sets in Groups

- Just Books \$250.00
- Just Books 2 \$250.00
- Just Stickers, Cards & Barcodes \$250.00
- Just Stickers, Cards & Barcodes 2 \$250.00
- Just CDs \$250.00
- Just Sales & Advertising \$250.00
- Just Sales & Advertising 2 \$250.00
- Just Sales & Advertising 3 \$250.00

To Help Your Presentation Print/Patterns

- Impressive Presentation \$99
- Logo Your Bag \$99
- Toddler Play \$99
- Menu a Go Go \$99
- Designer Receipts \$99
- Front Desk Presentation \$99
- Birthday Fun \$99
- Impossible Papers (till now) \$99

Print Sets give information on how to program the software and the printer, where to put the paper and how to correlate them all.

Pattern Sets give the pattern for the specific item so that it may be changed to meet your needs.

702-896-1776 www.gblasertrain.com

Digital Book Publishing

*Catch the Laser train
by Sheri Hauser*

Helping authors help themselves.

\$19.95

- **Glorybound Publication for Business**
- **Print Set 1-9** \$99.95
- **Pattern Set 1-** \$99.95
- Individual Print Sets 1-200 \$14.95
- Individual Pattern Sets 1-200 © *Released* \$14.95
- Combined Individual Print/Pattern Sets 1-200
- © *Released* \$25.00 per set

Combined Pattern and Print Sets in Groups

- Just Books \$250.00
- Just Books 2 \$250.00
- Just Stickers, Cards & Barcodes \$250.00
- Just Stickers, Cards & Barcodes 2 \$250.00
- Just CDs \$250.00
- Just Sales & Advertising \$250.00
- Just Sales & Advertising 2 \$250.00
- Just Sales & Advertising 3 \$250.00

To Help Your Presentation Print/Patterns

- Impressive Presentation \$99
- Logo Your Bag \$99
- Toddler Play \$99
- Menu a Go Go \$99
- Designer Receipts \$99
- Front Desk Presentation \$99
- Birthday Fun \$99
- Impossible Papers (till now) \$99

Print Sets give information on how to program the software and the printer, where to put the paper and how to correlate them all.

Pattern Sets give the pattern for the specific item so that it may be changed to meet your needs.

702-896-1776 www.gblasertrain.com

Digital Book Publishing

*Catch the Laser train
by Sheri Hauser*

Helping authors help themselves.

\$19.95