

PECK ENGINEERING, INC.

ENGINEERING WITH ELASTOMERS

PRECISION MOLDED PRODUCTS

12660 FARLEY AVE.

REDFORD, MI 48239

(313) 534-2950

WWW.PECKENGINEERING.COM

Updated 9/2023

TABLE OF CONTENTS

1. Title
2. Table Of Contents
3. Neoprene Seals Overview
4. Dovetail -Series “D”
5. Plug – Series “P”
6. Ball – Series “B”
7. Dovetail and Plug Combination
8. Dovetail and Ball Combination
9. Plug and Plug Combination
- 10.Cataloged Specials

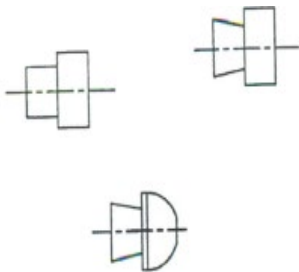
HIGH QUALITY NEOPRENE SEALS

THE ELEMENTS-

These elements can be provided as shown or in combinations, as shown below, to create the perfect seal for your application. Seals are molded from high quality neoprene. See the following pages for configuration, size and part number information. You will most likely be able to find what you need from our extensive offering. If not, specials are no problem.

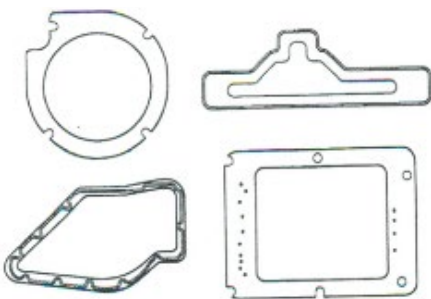


THE COMBINATIONS-



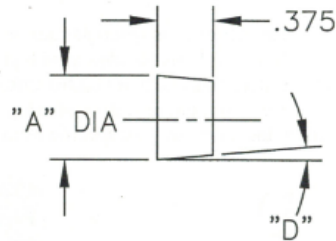
Let Peck Engineering, Inc. quote your specific needs for leak test sealing applications!

SPECIALS-



DOVETAIL – SERIES “D”

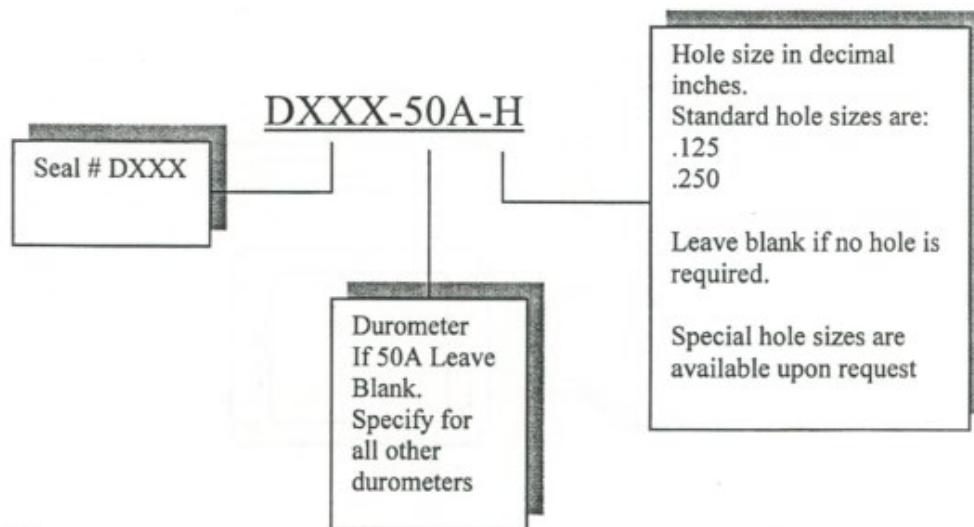
(ALL DIMENSIONS IN INCHES)



SEAL # "D" = 10 DEGREES	"A"
D50	.500
D62	.625
D69	.688
D75	.750
D88	.875
D94	.938
D100	1.000
D125	1.250
D150	1.500

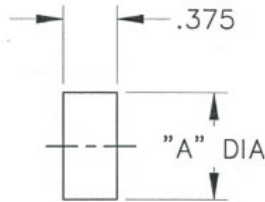
NOTE: See the “Cataloged Specials” for additional sizes.

PART NUMBERING:



PLUG - SERIES "P"

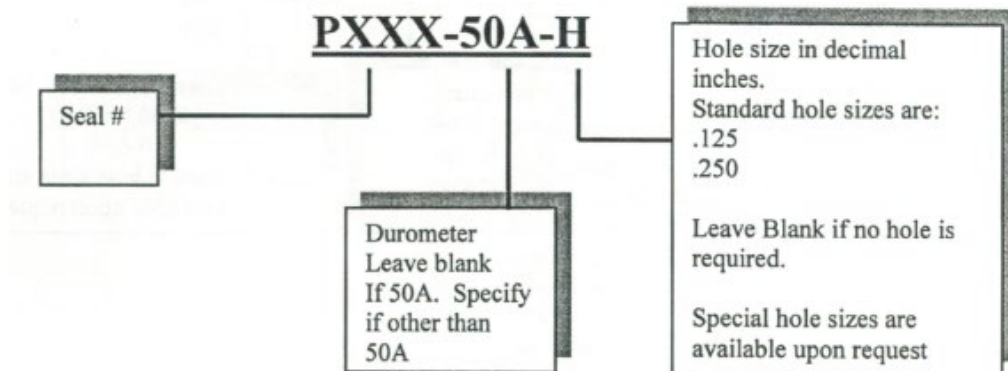
(ALL DIMENSIONS IN INCHES)



SEAL #	"A"
P62	.625
P75	.750
P81	.812
P88	.875
P100	1.000
P112	1.125
P125	1.250
P138	1.375
P150	1.500
P162	1.625
P175	1.750

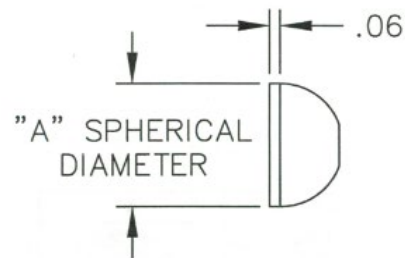
NOTE: See the "Cataloged Specials" for additional sizes.

PART NUMBERING:

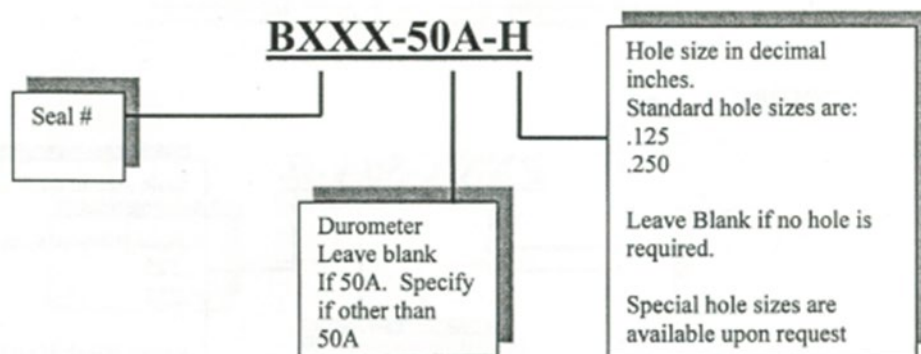


BALL - SERIES "B"

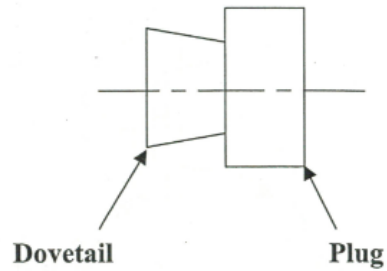
(ALL DIMENSIONS IN INCHES)



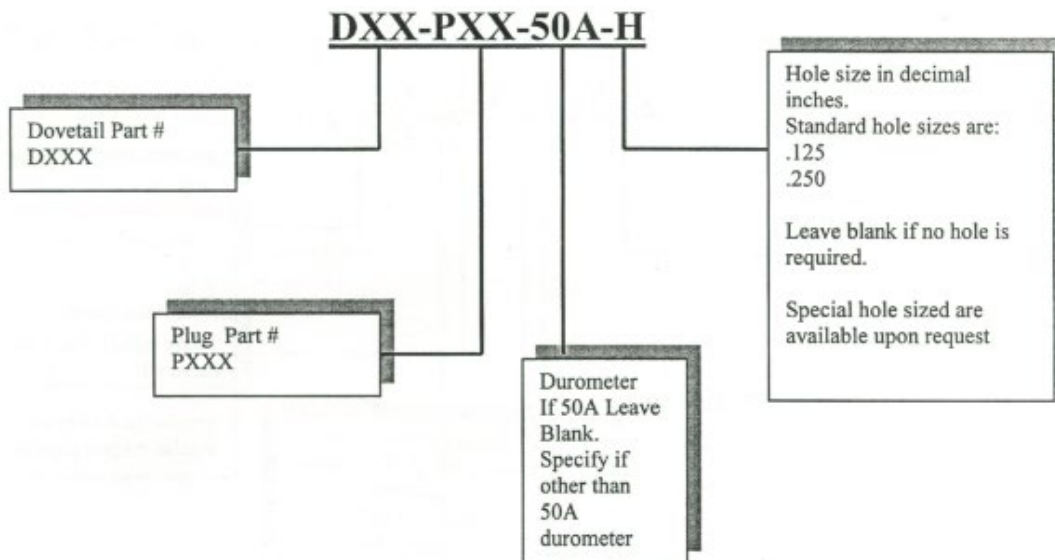
SEAL #	"A"
B75	.750
B100	1.000
B125	1.250
B150	1.500

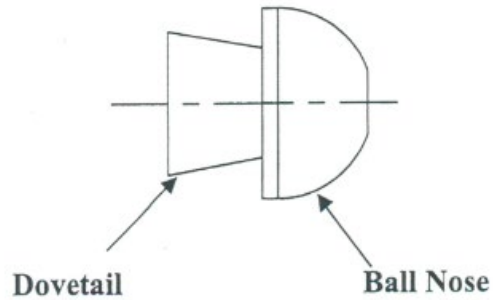
NOTE: See the "Cataloged Specials" for additional sizes.**PART NUMBERING:**

DOVETAIL & PLUG COMBINATION

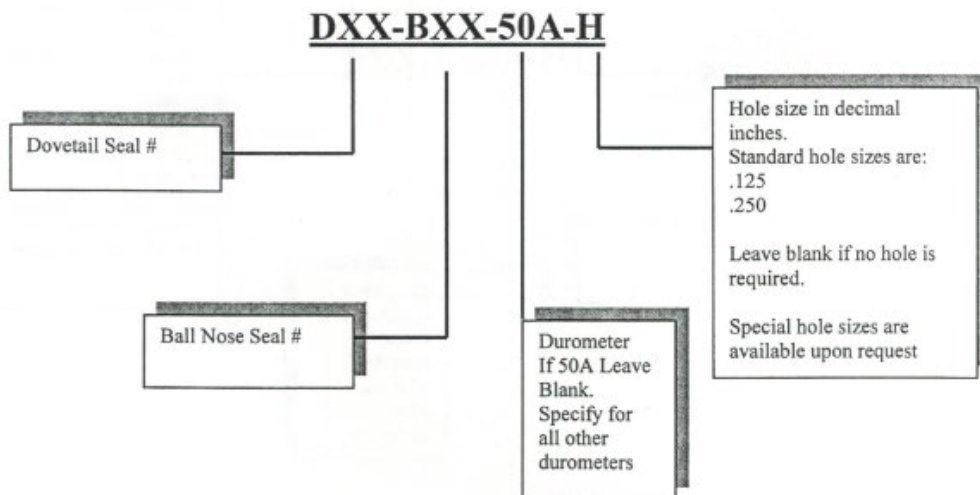


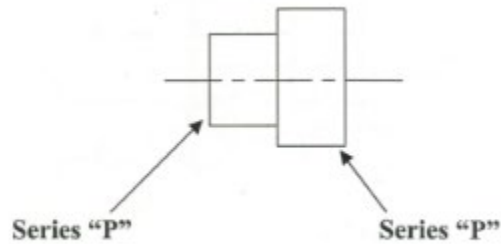
CREATE THIS SEAL BY COMBINING THE DESIRED DOVETAIL WITH THE DESIRED PLUG AS SHOWN IN THE CHARTS.



DOVETAIL & BALL COMBINATION

CREATE THIS SEAL BY COMBINING THE DESIRED DOVETAIL WITH THE DESIRED BALL NOSE AS SHOWN IN THE CHARTS.



PLUG WITH PLUG COMBINATION

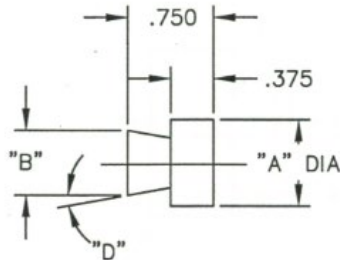
CREATE THIS SEAL BY SELECTING A PLUG SEAL FROM SERIES "P" AND COMBINING IT WITH ANOTHER PLUG SEAL FROM SERIES "P".

PXX-PXX-50A-H

<div style="border: 1px solid black; padding: 2px; margin-bottom: 5px;">Plug Seal #</div> <div style="border: 1px solid black; padding: 2px;">Plug Seal #</div>	<div style="border: 1px solid black; padding: 2px; margin-bottom: 5px;">Durometer If 50A Leave Blank. Specify for all other durometers</div>	<div style="border: 1px solid black; padding: 2px;">Hole size in decimal inches. Standard hole sizes are: .125 .250 Leave blank of no hole is required. Special hole sizes are available upon request.</div>
---	--	--

CATALOGED SPECIALS

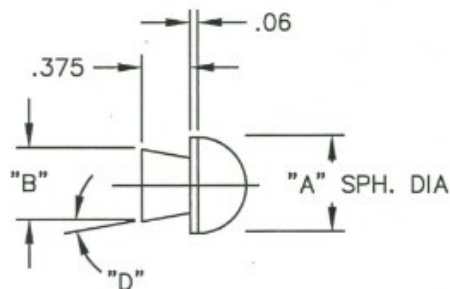
ORDER PART NUMBER + DUROMETER. (IF 50A DURO (STANDARD), LEAVE BLANK)



CATALOGED SPECIALS

These seals are available as shown without a mold charge.

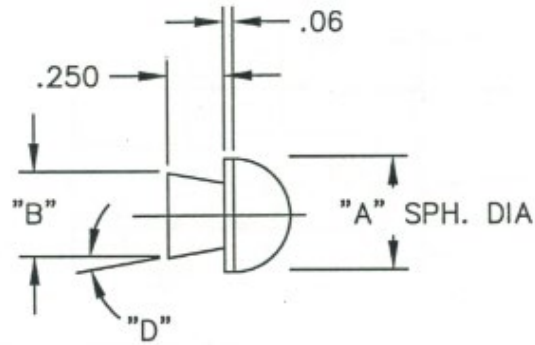
PART #	"A"	"B"	"D"
PE-7474	.560	.375	5
PE-7473	.625	.580	5
PE-7136	.750	.562	5
PE-7135	.875	.688	5
PE-7504	1.000	.688	5
PE-7471	1.125	.938	5
PE-7472	1.250	.938	5
PE-6611	2.000	1.625	5
PE-7120	3.100	2.375	10



CATALOGED SPECIALS

These seals are available as shown without a mold charge.

PART #	"A"	"B"	"D"
PE-7506	.750	.562	5
PE-6808	.875	.688	5
PE-5829	1.000	.688	5
PE-7475	1.250	.938	5
PE-7344	1.750	1.375	5
PE-6636	.750	.500	10
PE-7861	.875	.562	10
PE-7203	1.250	.938	10



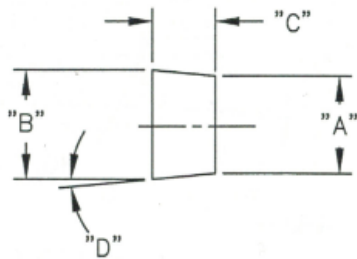
CATALOGED SPECIALS

These seals are available as shown without a mold charge.

PART #	"A"	"B"	"D"
PE-6809	.500	.312	5
PE-7072	.500	.375	5
PE-7690	.375	.312	10
PE-7803	.500	.470	10
PE-7807	.562	.470	10
PE-7077	.750	.500	10
PE-7202	.750	.562	10
PE-7689	.875	.562	10

CATALOGED SPECIALS

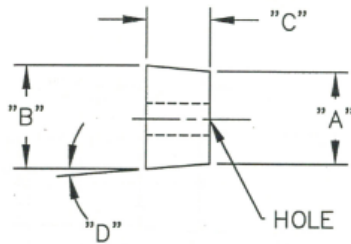
These seals are available as shown without a mold charge.



PART #	"A"	"B"	"C"	"D"
PE-5048	.625	.713	.500	5
PE-5047	.875	.963	.500	5
PE-5049	1.031	1.119	.500	5
PE-5046	1.125	1.213	.500	5
PE-5045	2.844	2.932	.500	5
PE-5061	.625	.801	.500	10
PE-5062	.781	.957	.500	10
PE-5063	1.000	1.176	.500	10
PE-5095	.531	.750	.625	10
PE-5055	.656	.875	.625	10
PE-5041	.750	.969	.625	10
PE-5096	.906	1.125	.625	10
PE-5098	1.031	1.250	.625	10
PE-5097	1.156	1.375	.625	10
PE-5091	2.031	2.250	.625	10
PE-5039	.719	.983	.750	10
PE-5038	.844	1.108	.750	10
PE-5027	1.250	1.514	.750	10
PE-5033	1.375	1.639	.750	10
PE-5028	1.500	1.764	.750	10
PE-5069	1.750	2.014	.750	10

CATALOGED SPECIALS

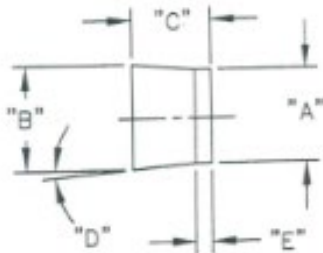
These seals are available as shown without a mold charge.



PART #	"A"	"B"	"C"	"D"	HOLE
PE-6810	2.662	2.750	.500	5	2.188
PE-6609	3.037	3.125	.500	5	2.375
PE-8425	.750	.859	.312	10	.188
PE-5915	2.260	2.375	.325	10	1.750
PE-5067	1.000	1.176	.500	10	.375
PE-5065	1.500	1.676	.500	10	.562
PE-6628	2.250	2.426	.500	10	1.750
PE-5898	3.062	3.238	.500	10	2.687
PE-6627	3.188	3.364	.500	10	2.625
PE-5666	5.375	5.551	.500	10	4.625
PE-5927	6.231	6.407	.500	10	5.750
PE-5090	2.031	2.250	.625	10	1.000
PE-5260	.750	1.014	.750	10	.312
PE-5040	.844	1.108	.750	10	.375
PE-5240	1.750	2.014	.750	10	.500
PE-5066	1.750	2.014	.750	10	.750
PE-5242	2.000	2.264	.750	10	.750
PE-5239	2.000	2.264	.750	10	.875
PE-5243	2.250	2.514	.750	10	.438
PE-5252	2.250	2.514	.750	10	.625
PE-6606	.745	.812	.125	15	.500
PE-6628	2.140	2.408	.500	15	1.75

CATALOGED SPECIALS

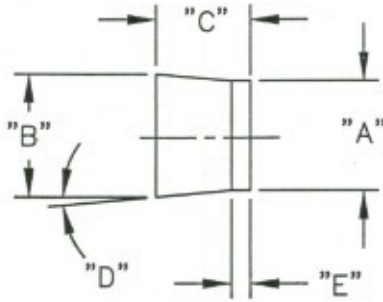
These seals are available as shown without a mold charge.



PART #	"A"	"B"	"C"	"D"	"E"
PE-5238	.750	.882	.500	10	.125
PE-5245	.875	1.007	.500	10	.125
PE-5018	.938	1.070	.500	10	.125
PE-5193	1.000	1.132	.500	10	.125
PE-5246	1.125	1.257	.500	10	.125
PE-5378	1.250	1.382	.500	10	.125
PE-5081	1.312	1.444	.500	10	.125
PE-5286	1.500	1.632	.500	10	.125
PE-5244	2.000	2.132	.500	10	.125
PE-5235	2.250	2.382	.500	10	.125
PE-5237	2.750	2.882	.500	10	.125
PE-5233	5.125	5.257	.500	10	.125
PE-5207	.750	.882	.625	10	.250
PE-5206	.875	1.007	.625	10	.250
PE-5220	1.750	1.969	.750	10	.125
PE-5231	.594	.770	.750	10	.250
PE-5074	.812	.988	.750	10	.250
PE-5073	1.062	1.238	.750	10	.250

CATALOGED SPECIALS

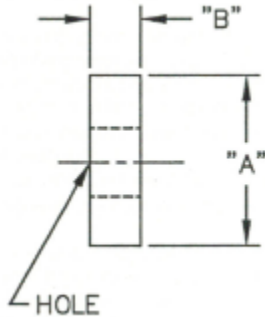
These seals are available as shown without a mold charge.



PART #	"A"	"B"	"C"	"D"	"E"
PE-5238	.750	.882	.500	10	.125
PE-5245	.875	1.007	.500	10	.125
PE-5018	.938	1.070	.500	10	.125
PE-5193	1.000	1.132	.500	10	.125
PE-5246	1.125	1.257	.500	10	.125
PE-5378	1.250	1.382	.500	10	.125
PE-5081	1.312	1.444	.500	10	.125
PE-5286	1.500	1.632	.500	10	.125
PE-5244	2.000	2.132	.500	10	.125
PE-5235	2.250	2.382	.500	10	.125
PE-5237	2.750	2.882	.500	10	.125
PE-5233	5.125	5.257	.500	10	.125
PE-5207	.750	.882	.625	10	.250
PE-5206	.875	1.007	.625	10	.250
PE-5220	1.750	1.969	.750	10	.125
PE-5231	.594	.770	.750	10	.250
PE-5074	.812	.988	.750	10	.250
PE-5073	1.062	1.238	.750	10	.250

CATALOGED SPECIALS

These seals are available as shown without a mold charge.



PART #	"A"	"B"	HOLE
PE-6848	.500	.188	.250
PE-6633	1.428	.500	.760
PE-6782	1.428	.500	.875
PE-6610	1.660	.562	1.125
PE-6608	1.687	.375	.920
PE-6630	1.895	.210	1.475
PE-6607	1.938	.375	1.225
PE-6837	2.250	.375	1.250
PE-6841	2.750	.375	1.750
PE-6020	3.031	.562	2.062