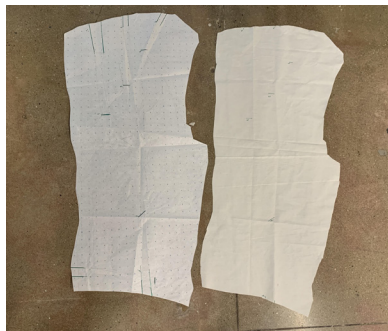
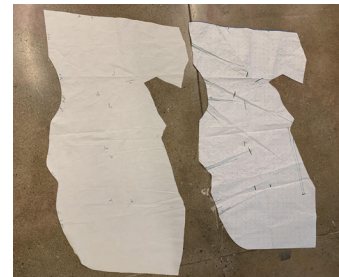
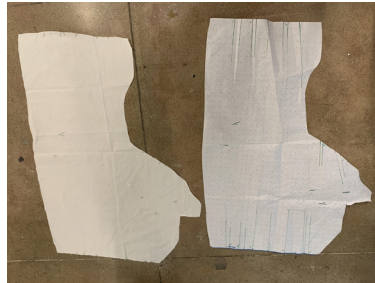
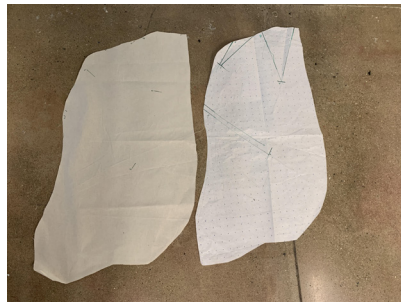
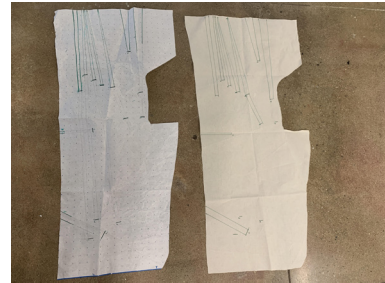


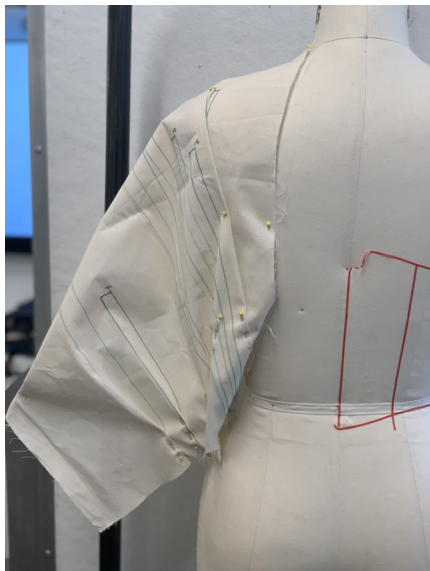
# BETHANY PLYMALE



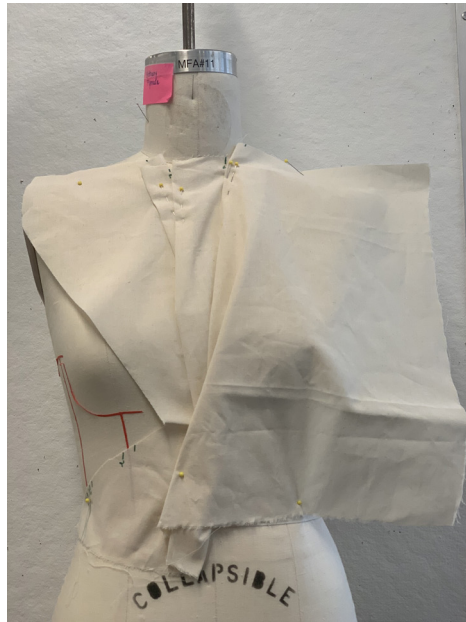


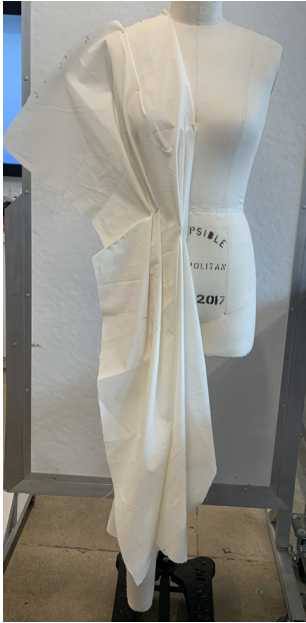


Trash bag pieces  
to pattern  
to muslin.



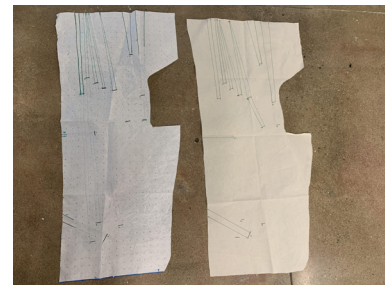
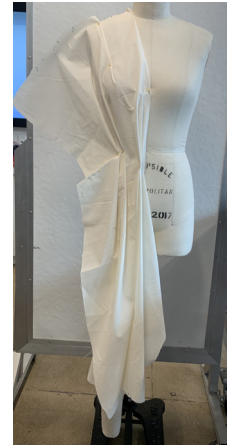


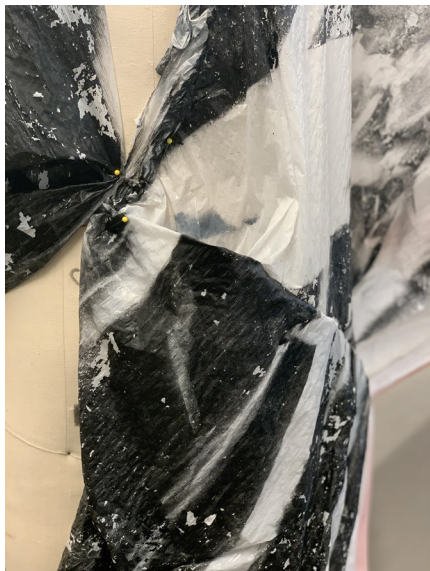
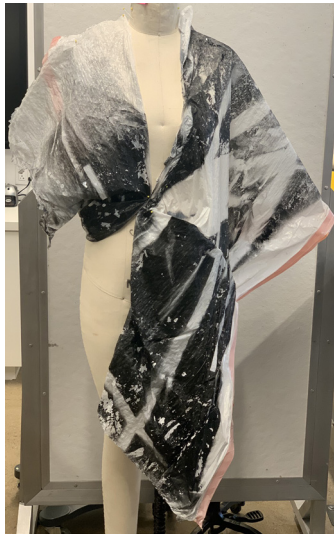






**MUSCLE MEMORY**







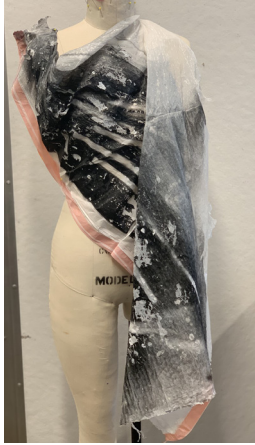


**FOCUS ON BUST**



top and scarf

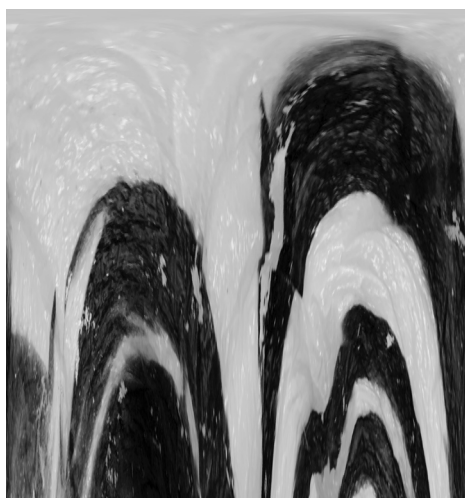
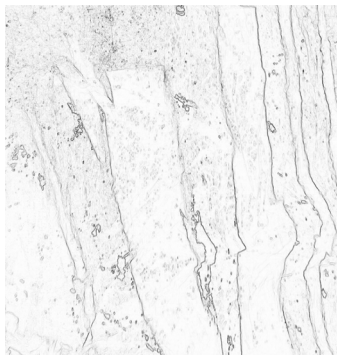
worn two ways



combining two bags

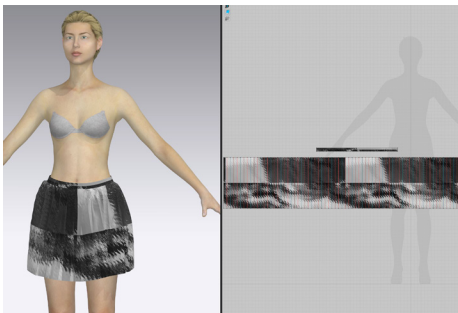
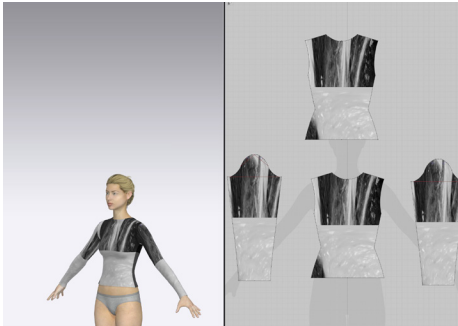
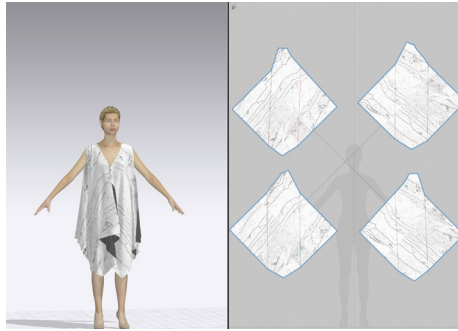


eveningwear

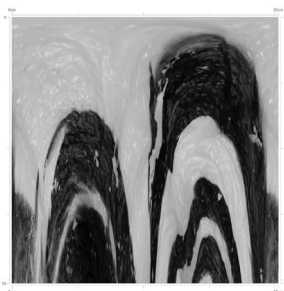
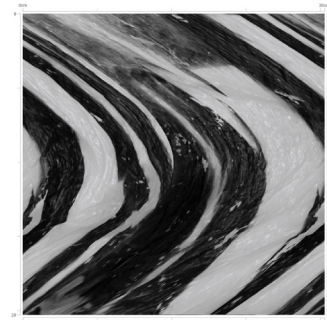
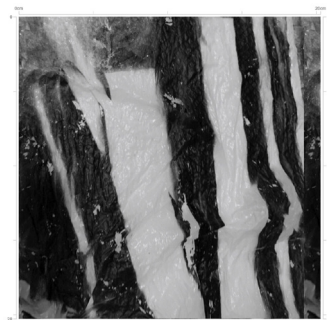
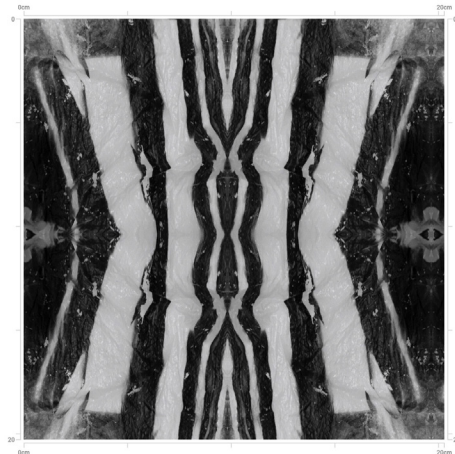


**PRINT  
PATTERN  
TEXTURE**





**CLO TESTING**



**FAUX SILK  
ECONOMY POLY**



**FINAL LINEUP**

"I FEEL LIKE GARBAGE"



stellamccartney

...



7,085 likes

**stellamccartney** This is a high trashion moment. Our vegan, cruelty-free Emilie boots are juxtaposed with repurposed found objects – elevating what some see as rubbish into art.

TRASHION



