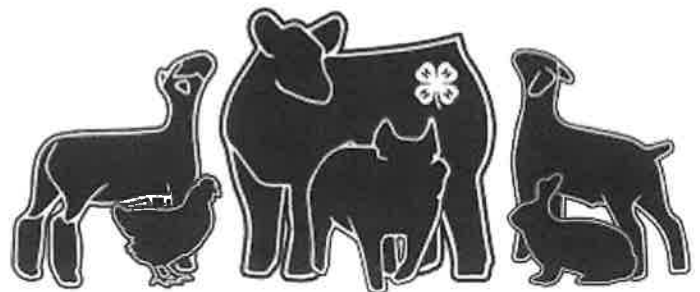




# SAN LUIS VALLEY FAIR

FROM PIONEER DAYS TO MODERN WAYS



# TABLE OF CONTENTS

(To jump to a section, click the page number)

2024 FAIR ENTRY INFORMATION	3
SAN LUIS VALLEY FAIR BOARD MEMBERS	3
FAIR SUPERINTENDENTS	3
AREA EXTENSION STAFF	4
COUNTY COMMISSIONERS	4
2023 JUNIOR MARKET LIVESTOCK SALE BUYERS	5
SLV FAIR JUNIOR MARKET LIVESTOCK SALE BUYING POOLS	6
FAIR SPONSORS	7
FAIR POLICIES	11
OPEN CLASS	12
4-H GENERAL & CONSUMER SCIENCE	28
COMMUNITY DINNER	31
GENERAL LIVESTOCK RULES	32
DESIGNATED AREA MAP	33
OPEN LIVESTOCK DIVISION	34
JUNIOR LIVESTOCK DIVISION	35
GENERAL LIVESTOCK RULES & REGULATIONS	35
SLV FAIR SALE RULES & REGULATIONS	39
BEEF	44
SWINE	47
SHEEP	51
MEAT GOATS	53
DAIRY GOATS	56
RABBITS	58
POULTRY	60
DOG	63
HORSE	68



Consaul Farms



# 2024 FAIR ENTRY INFORMATION

Fair entries can be completed, beginning June 30, 2024 online at:

<https://sanluisvalley.fairentry.com>

Entry fees can be paid with a check or cash via mail or in person at the Extension office in Monte Vista.

If you cannot complete your entry online, contact the Extension office at 719-852-7381 to discuss alternate entry methods. Open class entries are not subject to the clean-up deposit, and they do not need to pre-register, but are encouraged to do so if able.

**2024 FAIR ENTRIES AND PAYMENTS MUST BE POSTMARKED AND/OR RECEIVED NO LATER THAN JULY 12, 2024. ANY ENTRY RECEIVED OR POSTMARKED JULY 13, 2024 THROUGH JULY 19, 2024 WILL BE SUBJECT TO A \$50 LATE FEE PER EXHIBITOR. NO ENTRIES WILL BE ACCEPTED AFTER THIS DATE. NO EXCEPTIONS.**

## SAN LUIS VALLEY FAIR BOARD MEMBERS

### Alamosa County

Jason Tillman - President  
Brandy Myers  
Nikol Kelley

### Costilla County

Amanda Wakasugi  
Ted Cordova  
OPEN SEAT

### Mineral County

Betsey Strawn  
Matt Sliwkowski  
OPEN SEAT

### Conejos County

Ty Canty - Vice President  
Luis Escobedo  
OPEN SEAT

### Rio Grande County

Nick Malone, *Treasurer*  
Jeff Vance  
OPEN SEAT

### Saguache County

Nicole Rockey, *Secretary*  
OPEN SEAT  
OPEN SEAT

### Member at Large

Chuck Montague

## FAIR SUPERINTENDENTS

**Open Class:** Brandy Myers

**Overall 4-H General & Home Economics:** Open

**4-H General & Home Economics Departments:** Open

**Overall Small Animal:** Betsey Strawn

**Poultry:** Christine Davis

**Rabbits:** Crystal Voss

**Dog:** Amber Garrison

**Overall Open & 4-H/FFA Livestock:** Mark Brown

**Beef:** Clay Brown

**Goats-Meat:** Mackenzy Becker

**Goats-Dairy:** Sam Olsen

**Sheep:** Gracie Burkhart Porter

**Swine:** Heather Tillman

**Overall Horse:** Krista Culver

**Ranch Horse:** Leah Clark

**Gymkhana:** Jill Francis

# AREA EXTENSION STAFF

Director: Larry Brown

Office Manager: Jennifer Norris

4-H Youth Development Agent: Cody Groff

4-H Youth Development Agent: Mollie Wells

4-H Youth Development Agent (Juntos): Carol Gurule

Family & Consumer Science Agent: Janae Naranjo

Office Contact Info

Phone: 719-852-7381

Email: [cody.groff@colostate.edu](mailto:cody.groff@colostate.edu) / [mollie.wells@colostate.edu](mailto:mollie.wells@colostate.edu)

# COUNTY COMMISSIONERS

## Alamosa County

Lori Laske  
Vern Heersink  
Arlan Van Ry

## Conejos County

Mitchell Jarvies  
Joseph Baroz  
Carlos Garcia

## Costilla County

Robert Espinoza  
Lorrie Quintana  
Steven Romero

## Mineral County

Jesse Albright  
Scott Lamb  
Ramona Weber

## Rio Grande County

Scott Deacon  
Gene Glover  
Tyler Ratzlaff

## Saguache County

Lynne Thompson  
Tom McCracken  
Liza Marron

## THANK YOU!

*The San Luis Valley Fair Board acknowledges the fine assistance of all the superintendents, communities, 4-H/FFA members, and their families who have contributed in many ways to making this Fair and past Fairs a success. We take this opportunity to thank all of you as well as our sponsors, and the buyers who have and will again support our SLV Fair Junior Market Livestock Sale. The Fair is an excellent example of communities working together for the good of all.*

***Thank you to each and every one who contributes to this effort!***

# 2023 JUNIOR MARKET LIVESTOCK SALE BUYERS

*Many thanks to Brady Stagner for volunteering his services at the Livestock Sale!*

We encourage you to support the businesses & individuals that support the 4-H & FFA members.

21st Century Equipment  
4Rivers Equipment LLC  
AB Masonry LLC  
Agro Engineering  
Alamosa State Bank  
Alcon Construction  
Alpine Vet  
Alta Convivence  
Asbell Farms  
B & B Farms  
Beau Temple  
Beverly Strnad  
Bill Clark Truck Line  
Blanca Forestry  
Bob Freese  
Booth Ranches  
Brenda Hoffstaetter  
Center Kiwanis  
Chris & Roxann Sittler  
CIA-Leavitt Insurance  
Cinch Jeans  
Comfort Zone Insulation  
Conejos County Rotary  
Consaul Farms  
Cooley & Sons Excavating  
Cottonwood Dental  
Cultivating Hearts  
Dave Warsh  
Dobbs Enterprises  
Dry Valley Farms

Elk Creek Vet Clinic  
Everything Auto and Diesel  
LLC  
Fares & Amy Jacquez  
Farm Credit of So Colorado.  
Farm Fresh Direct  
First Southwest Bank  
Freemon's Guest Ranch  
Garrison Fence  
Good Speed Automotive  
J & S Breakaway Corp  
Jim & Lisa Jaminet  
Jim McCullough  
Jkopasz Construction  
Jody Kern  
Johnson Ranch  
La Junta Livestock  
Lenco West  
McBartlett Holdings LLC  
McClave State Bank  
Melanie & Andy Dickey  
Mill Iron Cattle  
Mineral County  
Monte Vista Coop  
Monte Vista Livestock Auction  
Mosby Farms  
Mosca Pit Stop  
Mountain Skillz Excavating  
Myer's Farms LLC  
PEF, Inc.

Plant Nutrient Solutions  
Polished Edge  
Richard Acheson  
Rio Grande Seed & Grain  
Rob & Val Reifschneider  
Rocky Mountain Ag  
Rodney & Jeanne Archer  
Roger Cole  
San Luis Valley Federal Bank  
Schneider Farms  
Schultz Realty  
SLV Fair Boosters  
SLV Quality Concrete  
SLV Rural Electric Coop  
Sorum Tractor  
Steffens Quality Plumbing &  
Heating, Inc.  
Sunflower Bank  
Tess Christensen  
Torben Walters Insurance  
Agency  
Town & Country  
Trinchera Ranch  
US Tractor  
Wall Smith Bateman  
White Rock Specialties  
Wilbur-Ellis  
Wintz, Kim & Eryn  
World Fuel Services/Alta Fuels  
Worley Family Farms

IN THE EVENT THAT WE OMITTED YOUR NAME FROM OUR BUYERS LIST, WE EXTEND OUR APOLOGIES AND ASK THAT YOU PLEASE LET US  
KNOW. THANK YOU.

# SLV FAIR JUNIOR MARKET LIVESTOCK SALE BUYING POOLS

**Do you want to support exhibitors at the Livestock Sale but don't want to purchase a whole animal alone?**

Partnering with a neighbor or contacting one of the following buying pools is a great way to support the Sale.

## **Kiwanis Club of Center**

The Kiwanis Club of Center has as one of its major projects, the pooling of community funds for the purpose of maintaining a floor on the price of the livestock sold at the SLV 4-H FFA Livestock Auction. This floor guarantees that all youth have a fair return for their efforts of livestock production projects and are able to bank some money. The youth use their money to pay feed and other expenses, and then set some aside for the next years project or for college expenses.

“We do not want to purchase all the animals but we want to see all the youth earn a fair return and to show a profit for their labors.”

## **Junior Livestock Sale Boosters**

The Jr. Livestock Sale Boosters has a mission of improving the SLV Fair Sale by having an unbiased approach in upholding the sale prices of the market animals and improving the profitability of the market animal projects. We accomplish this by actively bidding on and purchasing animal projects in the SLV Fair Sale as well as providing add-on money for projects that appear to have sold below market, based on conditions in sale orders, placing and animal species.

## **Conejos County Rotary**

PO Box 145, La Jara, CO 81140

### **SHOW YOUR APPRECIATION!**

*We encourage you to support the business and individuals that support our 4-H and FFA members! Take time to not only say thank you to our sponsors and buyers, but also support them as a customer. Our fair would not be possible without their contributions.*

## **FAIR SPONSORS**

### **COUNTY SPONSORS**

Alamosa County  
Conejos County  
Costilla County

Mineral County  
Rio Grande  
County

Saguache County

### **GOLD SPONSORS**

Consaul Farms  
Del Norte Bank

Monte Vista COOP  
RG Bank

### **SILVER SPONSORS**

Bountiful Meats  
Myers Farms,  
LLC

Sanford  
Processing /  
Valley Meat Co.

SLV REC/CIELLO  
Wilbur-Ellis

### **BRONZE SPONSORS**

San Luis Valley Health

SLV Federal

### **FRIENDS OF SLV FAIR**

4UR Ranch  
AgCheck Compliance  
Service Inc.  
Aspen Produce LLC  
Blanca Potato CO  
Comfort Zone

Cooley and Sons (In Kind)  
Husmann Plumbing  
L & S Feeds LLC  
Mineral County  
Myers Brothers  
Shon R Davis

Sign Guys and Gal  
Ski High Stampede  
Tyler & Kaylene Kyffin  
Wenta Nip and Sanitizing

### **IN-KIND DONATIONS**

Cooley and Sons  
Excavating

Gobins  
MV COOP

Sorum Tractor  
Wilshaw's Lumber

### **INDOOR PROJECT / KIDS ACTIVITY**

Center Kiwanis

Jean K Davis Farms

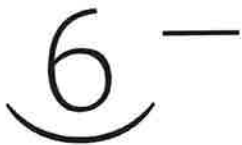
Monte Canvas and  
Upholstery

## BELT BUCKLE & INDOOR AWARD SPONSORS

4 UR Ranch	Curt and Cindy Wilson	Polzin Family
5K Pest Management	Dobbs Enterprises	Price Farms LLC
A and B Auction Services	Dry Valley Farms	Rafter P Ranch
Aaron and Lori Laski	Elsie and Lillie Hamilton	Reynolds Tree Services
Agro Engineering	Fishtail Ranch Outfitters	Ron and Sarah Stoeber
Alamosa State Bank	Gary and Jody Seger	San Acacio Seed LLC
American Family Insurance	Hogues Glass	Sazon
Aspen Produce	In memory of Logan Smith	Schneider Farms
Bar Two Bar Ranch LLC	Jared and Dara Holman	Schraider Glass
Booth Ranches	JKopasz Construction	Shultz Realty
Brady Farms	Johnson Farms	Sims Trucking
Broken Arrow Ranch and Land	Jubilee Farms	SLV Quality Concrete
Canty Electric	Kenzy Murphy	Sunflower Bank
CAP (SLV)	Larry and Ruthie Brown	Sunset Grill LLC
Cattleman's Association	Laura Martin	Superior Staining
Charizma	Liddell Plumbing	Tillman Farms
Christensen Farm	Malouff Boer Goats	Trinchera Ranch
CO Gourmet Potato	Mark Holman	Valley Smiles Dental
Colorado Pacific Rio Grande	Metz Potato	Van Treese Farms
Consaul Farms	Monte Vista Rotary	Wiescamp LLC
Cooley and Sons	Mosby Farms	
Creede Chamber	Nissen Farms	

## BRAND SPONSORS

(Also see the Brand Display in McMullen Building)



Hi Valley Ranch



Mosby Farms

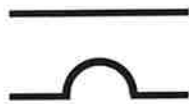


Rafter P Ranch



Christensen Farms

Johnson Ranches



Oxcart Ranch



LAZYEA Ranch, LLC

Aaron and Lori Laske

# Thank You for Your Sponsorship!



# FAIR POLICIES

1. The San Luis Valley Fair is an educational activity created to evaluate each participant's progress and accomplishments through interview judging, showmanship, preparation of educational displays, demonstrations, etc. The Fair is also a venue for promoting new recommendations and practices in agriculture, home economics, natural resources and youth programs.
2. The San Luis Valley Fair Board, composed of appointed representatives from Alamosa, Conejos, Costilla, Mineral, Rio Grande, and Saguache Counties, coordinate the Fair. The members of the San Luis Valley Fair Board determine policies, approve expenditures, develop a Fair program, and provide awards for exhibitors. The Fair is held in cooperation with the local Colorado State University Extension 4-H program, and San Luis Valley FFA programs.
3. A 4-H/FFA exhibitor or other individual may use a "protest" to review enforcement of the rules, regulations, policies, and judging procedures printed in this book. All protests shall be considered by a quorum of the San Luis Valley Fair Board. Protests must be in writing and accompanied by a fee of \$150 in cash or certified check. The protest shall plainly state the cause of the protest and shall be delivered to a San Luis Valley Fair Board member no later than 8 (eight) hours after occurrence of the alleged incident. Compliance with this policy is mandatory prior to seeking review. Judging will not be interrupted by a protest. The fee imposed shall be refunded if the matter is resolved in favor of the person bringing the protest. The decision of the Fair Board is final.
4. All reimbursements in connection with the 2024 San Luis Valley Fair must be presented to the San Luis Valley Fair Board before October 9, 2024, or will be void.
5. The San Luis Valley Fair Board and staff will use reasonable diligence to ensure safety of exhibits after their arrival and placement, but in no case will they be responsible for any loss or damage done to, occasioned by, or arising from any animal or article on exhibit. The exhibitors shall indemnify the San Luis Valley Fair Board and staff of all legal or other proceedings in regard thereto. The placing of any exhibit on the show grounds by any and all exhibitors shall signify the exhibitor's agreement to abide by this policy.
6. The San Luis Valley Fair does not discriminate on the basis of race, color, sex, religion, age, disability, sexual preference, veteran or marital status, or national origin in its policies or activities.
7. The mention of any company or association is made with the understanding that no discrimination is intended and no endorsement implied.
8. Possession of alcohol, illegal substances, firearms, or illegal weapons is forbidden during Fair activities. Any violation of this policy shall be grounds for expulsion from the Fair and ejection from the premises.
9. The San Luis Valley Fair Board has the final and absolute opportunity to determine if any person has violated any of the rules, regulations, and policies printed in this SLV Fair Book and to settle and determine all matters, questions or differences arising out of, connected with, or incident to a violation of these rules, regulations, and policies. Any person who violates any of these rules, regulations, or policies may be subject to forfeiture of all privileges, awards, and premiums and to such other penalty deemed appropriate by the Fair Board.

**2024 FAIR ENTRIES AND PAYMENTS MUST BE POSTMARKED AND/OR RECEIVED NO LATER THAN JULY 12, 2024. ANY ENTRY RECEIVED OR POSTMARKED JULY 13, 2024 THROUGH JULY 19, 2024 WILL BE SUBJECT TO A \$50 LATE FEE PER EXHIBITOR. NO ENTRIES WILL BE ACCEPTED AFTER THIS DATE. NO EXCEPTIONS.**

# OPEN CLASS

Superintendent: Brandy Myers (719) 849-1522

**Entry Fee: no entry fee for this contest**

## General Rules and Regulations

1. The San Luis Valley Fair Board will use all care possible to ensure the safety of the entries; however, under NO CIRCUMSTANCES will they be responsible of loss, or damage done to, occasioned by, or arising from any article on exhibition.
2. Each exhibit must be entered under the name of the person who made it.
3. All exhibits must have been completed since August 1<sup>st</sup>, 2023.
4. Exhibits that do not follow class description will be disqualified. Ribbons will be awarded in all classes, if merited.
5. New classes may be created on entry day only when the following condition is met: When there are two or more entries which do not logically fit into established classes.
6. County Fair classes are not necessarily descriptive of or included as classes for entry at Colorado State Fair. See [www.coloradostatefair.com](http://www.coloradostatefair.com) for entry rules for State Fair.
7. Open classes are categories that all community members are invited to take part in.
8. Items left after pickup time will be available for pick up at the Extension Office. (If items are not picked up within 30 days after checkout, they will be given to charity.)

All Open Class Departments have six age categories as follows:

1. Mentor and Me: 3-7
2. Junior 8-12
3. Teen 13-18
4. Adult: 19-60
5. Senior 65+
6. Pro – Anyone earning over \$300 in the division entered.

## BEST OF SHOW AWARDS

\$25 Best of Show Award

At the judge's discretion this will be awarded in each age division for Mentor and Me, Junior, Teen, Adult and Senior if more than 3 people's exhibits are judged per division.

## PREMIUMS

Premiums will be awarded based on ribbons received. Premiums will only be awarded for blue, red, and white. The premium amounts are as follows:

Blues \$3.00

Reds \$2.00

Whites \$1.00

\*\*\*These premiums may be subject to change by the San Luis Valley Fair Board.

## Department 1 – Vegetables and Crops

Vegetables and Crops Rules: Exhibits must be made by the exhibitor and not previously entered at the SLV County Fair. All Exhibitors must furnish a paper plate HEAVY ENOUGH to hold the vegetables or fruits being displayed firmly. Each crop display must be in a zip-lock type bag. Each exhibit must be of the proper size, number or weight as listed for the various classes, or risk being disqualified. Please bring insect free produce. Exhibitors are allowed 3 entries per class.

### Vegetable Classes

1. Head Lettuce (Such as Iceberg)
2. 5 Leaves of Leaf Lettuce
3. 3 Head Kohlrabi
4. 1 Head Kale
5. Greens, 1 lb
6. 10 Peas
7. 1 Head Cauliflower
8. 1 Full Head Broccoli
9. Swiss Chard, ¼ lb
10. 6 Carrots
11. 3 Turnips
12. 1 Eggplant
13. 4 Hot Peppers
14. 3 Sweet Peppers
15. 4 Pickling Cucumbers
16. 4 Slicing Cucumbers
17. 1 Head Cabbage
18. 1 Pie or Field Pumpkin
19. 3 Ears Sweet Corn, shucked
20. 1 Summer Squash – Zucchini- Green – Gold
21. 1 Winter Squash
22. 2 Onions
23. Heads of Garlic trimmed to 2” or nicely braided
24. 6 Green Onions, tops trimmed to 6”
25. 6 Green Snap Beans
26. 6 Wax Beans
27. 6 Purple Beans
28. 6 Pole Beans
29. 6 Radishes
30. 5 Beets, trimmed to 3 – 4”
31. 3 Ripe Tomatoes, stems on
32. 6 Ripe Cherry Tomatoes, stems on
33. 3 Green Tomatoes, stems on
34. 4 Red Potatoes
35. 4 White Potatoes
36. 4 Yellow Potatoes
37. Other Vegetables

### Fruit Classes

38. 6 Strawberries
39. 6 Raspberries
40. 6 Cherries
41. Other Berries
42. 4 Winter Apples
43. 8 Crab Apples
44. 4 Stalks of Rhubarb
45. Other Fruits

### Novelty Vegetables Classes

46. Giant Zucchini
47. Giant Vegetables, other
48. Novelty Formed Vegetables
49. Novelty Gourds, to fit on 8” plate
50. Vegetable Display (6 different vegetables, creatively and attractively displayed)

### Fresh Herb Classes

- Fresh Herbs – nice stem or sprig, bagged & on plates, not in water
51. Basil
  52. Dill, not yet seeded
  53. Oregano
  54. Cilantro
  55. Ginger Root
  56. Parsley
  57. Chives
  58. Rosemary
  59. Mint
  60. Thyme Other

### Field Crops

61. All Varieties

## Department 2 – Flowers & Plants

Flowers and Plants Rules: Exhibits must be made by the exhibitor and not previously entered at the SLV County Fair. Items Entries identified as a noxious weed will be disqualified and destroyed. Entries will be disqualified if they have insects or do not contain the number of blooms or stems designated in each class. Flowers should be exhibited with blooms of uniform size, shape and color, straight stems and any natural foliage. Exhibitors must furnish their own containers. The blooms or stem count is listed next to each listing.

### Cut Flower Classes

1. 1 Aster, any color
2. 2 Coneflowers, any color
3. 2 Bachelor Buttons
4. 3 Bells of Ireland
5. 5 Black-eyed Susan's
6. 4 Calendula
7. 3 Clematis
8. Cosmos, 3 sprays
9. Columbine
10. 1 Dahlia, large (over 8")
11. 4 Dahlia, decorative (4" x 8")
12. 4 Dahlia, miniature (up to 4")
13. 4 Daisies, Gloriosa
14. 4 Daisies, any Shasta
15. 4 Daisies, any other
16. Gladiolus, 1 spike
17. Daylilies, 1 stem
18. True Lily, single
19. 3 Marigold
20. 4 Nasturtium
21. 6 Pansies
22. 4 Petunias, single blossom
23. 4 Petunias, large ruffled blossom
24. 4 Petunias, double ruffled blossom
25. 4 Petunias, mixed blossom
26. Phlox
27. 4 Pinks
28. 4 Poppies
29. 1 Rose
30. 1 Rose Bud
31. 4 Snapdragons
32. 4 Sweet Peas, any one color
33. 4 Sweet Peas, mixed colors
34. 6 Violas
35. 3 Zinnia
36. Domesticated Sunflower
37. Lupin, 1 stem
38. Miscellaneous

### Potted Plant Classes

39. Blooming with blooms
40. Cacti
41. Succulent
42. Colored Foliage
43. Green Foliage
44. Vining
45. Vining with blooms
46. African Violet in Bloom
47. Any Other Potted Plants

### Flower Arrangement Classes

**\*\*Home Grown Flowers\*\***

48. In Oasis
49. Dried
50. Bouquet
51. All Other Floral Arrangements

**\*\*Can use commercial flowers\*\***

52. In Oasis
53. Dried
54. Bouquet
55. All Other Floral Arrangements

### Fairy Gardens

56. Theme
57. Herbal
58. Succulent
59. Cactus
60. Patio
61. Flowering
62. Artistic
63. All Other Fairy Gardens

## Department 3 - Baked Goods, Non-Cake or Pastry

Baked Good Rules: Exhibits must be made by the exhibitor and not previously entered at the SLV County Fair. Bring food items on sturdy paper plates and/or covered heavy cardboard in a zipper-locked bag for display of food exhibits when possible. See each category for more specific display instructions. Uncut pies must be in disposable pie pan and uncut. Cupcake liners are ONLY allowed on cupcakes, not muffins. Breads must be exhibited as a whole loaf. Baked goods will be judged on texture (35%), flavor (35%), and appearance (30%). Breads must be exhibited as a WHOLE LOAF.

### Quick Breads (no yeast, whole loaf or plate of 4)

1. Baking Powder Biscuits (4)
2. Zucchini Bread (loaf)
3. Zucchini Muffins (4)
4. Banana Bread (loaf)
5. Banana Muffins (4)
6. Pumpkin Bread (loaf)
7. Pumpkin Muffins (4)
8. Other Fruit Bread (loaf)
9. Other Fruit Muffins (4)
10. Coffee Cake (loaf)
11. Corn Bread (loaf or 4 muffins, no wrapper)
12. Tortillas
13. Scones – any flavor (4)
14. All Other

### Sourdough (whole loaf or plate of 4 where applicable)

15. Sour bread (loaf)
16. Sour cakes (4)
17. Sour cookies (4)
18. Sour doughnuts (4)
19. Sour biscuits (4)
20. All other sourdough

### Yeast (whole loaf or plate of 4 where applicable)

21. White Bread (loaf)
22. Whole Wheat Bread (loaf)
23. Rye Bread (loaf)
24. White Dinner Rolls (4)
25. Whole Wheat Dinner Rolls (4)
26. Raised Doughnuts (4)
27. Cinnamon Rolls (4)
28. Croutons (4)
29. All Other Yeast

### Bread Machine Made (whole loaf)

30. White Yeast
31. Whole Wheat Yeast
32. Other Bread Machine

### Candies (6 pieces)

33. Brittles
34. Divinity
35. Fudge
36. Un-dipped Mints
37. Dipped Mints
38. Other Dipped Candies
39. Popcorn Balls/Flavored Popcorn
40. All Other Candies

### Cookies (6 cookies)

41. Oatmeal
42. Brownies
43. Iced Brownies
44. Chocolate Chip Drop
45. Chocolate Chip Bar
46. Sugar Cookie Drop
47. Sugar Cookie Iced
48. Peanut Butter Drop
49. Peanut Butter Drop
50. No Bake Cookies
51. All Other Cookies

## Department 4 - Baked Goods, Cakes & Pastries

**Cake & Pastry Rules:** Exhibits must be made by the exhibitor and not previously entered at the SLV County Fair. Cakes should be placed on a very firm, disposable surface, cut parallel to the shape of the cake and must be 1.5 inches on each side from the base of the border, not the cake. The surface should be covered. Freezer paper is not advised as it absorbs grease. The cake board must be covered with a food safe material, such as aluminum foil. If you use a decorative or gift wrap paper or fabric, it must be covered in food quality plastic wrap. Cakes may be frosted or unfrosted. Only one 8 inch or 9-inch layer of a non-decorated cake should be exhibited. Cakes will be scored on texture (35%), flavor (35%) and appearance (30%).

**Decorated Cake** Icing may be applied to a non-edible form in all classes with the exception of edible decorated cakes, which must be edible. Decorated cakes WILL NOT be tasted.

1. Any Edible
2. Birthday
3. Special Occasion
4. Wedding
5. Cupcakes (4 total)
6. All Other Decorated Cake

### Scratch Cake

7. White
8. Yellow
9. Chocolate
10. Spice
11. Angel Food
12. Pound
13. Butter
14. Sponge
15. Cheese Cake – baked
16. Cheese Cake – unbaked (must be entered morning of judging due to lack of refrigeration)
17. Cupcakes
18. All Other from Scratch Cake

### Packaged Mix Cake (made from a prepackaged mix)

19. Fruit
20. Spice
21. Cupcakes
22. All Other Mix Cakes

**Pastry** Pies must be WHOLE in a disposable pan and UNCUT. Classes will be developed to reflect entries.

23. Fruit Pie
24. Cream Pie (must be entered morning of judging due to lack of refrigeration)
25. Walnut or Pecan Pie
26. Meringue
27. Cream Puffs
28. Maple Bars
29. Popovers
30. Fruit Tarts
31. Danish
32. Cobbler
33. All Other Pastries

## Department 5 - In the Cupboards

In the Cupboards Rules: Exhibits must be made by the exhibitor and not previously entered at the SLV County Fair. Please see individual divisions for rules.

### Canned Goods

1. All canned and jellied products must include the following information on the label: name of product – method of preparation – method of processing and pounds of pressure used if food was pressure canned - altitude at which processing was done – date of processing. The recipe is strongly recommended to be included, but not mandatory. REMEMBER TO ADD ALTITUDE ADJUSTMENT TIME TO RECIPE YOU ARE PREPARING.

#### Example

**Product** Pitted cherries

**Method:** Raw pack (water bath or pressure canned)

**Time:** 28 minutes (pints)

**Altitude:** 7,600 feet

**Date:** September 2021

2. Jellied products and other canned products must be displayed in the U.S. standard jar (i.e. Ball or Kerr). Two-piece matching lids must be used.
3. Acceptable canning methods include pressure canned or hot water bath. It may be necessary to open home canned food entries to inspect for judging purposes. Judges will use their own discretion as to whether or not they will open and taste canned products. Directions for different methods are available from the SLV County Extension Office and local libraries. Products with paraffin (wax) seals will not be accepted.
4. Including the recipe is beneficial
5. Head space (the unfilled jar space above the food and below its lid) should be ¼ inch for jams and jellies; ½ inch for fruit, pickles and tomatoes processed in hot water bath; and 1 to 1 ¼ inch for low acid foods, vegetables, meats, etc. processed in a pressure canner.
6. Judging for fruits, vegetables, meat, fish and soups is based on appearance (50%), pack (40%), and container and labeling (10%).

### Water Bath Fruits & Juices

1. Apples
2. Cherries
3. Peaches
4. Pears
5. Plums
6. Rhubarb
7. Apples
8. Applesauce
9. Tomatoes
10. Chutney (include ingredients)
11. Syrup
12. Any Other Fruit or Berries
13. Apple Juice Tomato Juice
14. Tomato Juice
15. Any Other Juice

### Pressure Canned Vegetables & Meats

16. Wax Beans
17. Green Beans
18. Tomatoes, Stewed
19. Beets
20. Corn (in pint jar)
21. Carrots
22. Cubed Squash or Pumpkin
23. Mince Meat (include ingredients)
24. Any Other Vegetable
25. Fish
26. Chicken
27. Any Other Meat

**Water Bath Pickled Foods**

- 28. Sweet Cucumber Pickles
- 29. Any Other Sweet Pickled Product
- 30. Dill Cucumber Pickles
- 31. Any Other Dilled Product
- 32. Bread and Butter Pickled Product
- 33. Any Other Bread & Butter Pickled Product

**Water Bath Jelly**

- 39. Chokecherry Jelly
- 40. Apple Jelly
- 41. Grape Jelly
- 42. Plum Jelly

**Water Bath Jam Classes**

- 47. Peach Jam
  - 48. Raspberry Jam
  - 49. Strawberry Jam
  - 50. Apricot Jam
  - 51. Plum Jam
  - 52. Any Two or More Fruit Mix Jam
  - 53. Any Other Jam
  - 54. Healthy Recipes (include recipe)
- Water Bath Miscellaneous

- 34. Pickled Cucumber Relish (include ingredients)
- 35. Any Other Pickled Relish (include ingredients)
- 36. Any Other Pickled Product
- 37. Salsa (include ingredients)
- 38. Any Other Kind of Sauce (include ingredients)

- 43. Crab Apple Jelly
- 44. Any Two or More Fruit Mix Jelly
- 45. Any Other Jelly
- 46. Healthy Recipes (include recipe)

- 55. Strawberry Preserves
- 56. Peach Preserves
- 57. Any Two or More Fruit Mix Preserves
- 58. Any Other Preserves
- 59. Apple Butter
- 60. Any Other Fruit Butter
- 61. Any Marmalade (include ingredients)
- 62. Any Conserve (include ingredients)
- 63. Healthy Recipes (include ingredients)



## Department 6 - Dried Products

Dried Product Rules: Exhibits must be made by the exhibitor and not previously entered at the SLV County Fair. Please include ½ cup of dried product, unless otherwise noted. Dried products must be in a moisture vapor-proof container or bag. Labels on dried foods must indicate the name of the product, any pretreatment, additional ingredients, method of drying (oven, dehydrator, solar, drying time and date dried. Tasting of dried products will be at the judge's discretion.

### Example of Label

**Product: Apricots with Ascorbic Acid**

**Method: Dehydrator Dried**

**Time: 8 hours**

**Date: September 2022**

### Fruits

1. Apples
2. Apricots
3. Cherries
4. Pears
5. Plums
6. Grapes/Raisins
7. Fruit Leathers (1 roll)
8. All Other Dried Fruits

### Vegetables

9. Carrots
10. Celery
11. Corn
12. Mixed Vegetables
13. Frozen Vegetables
14. Onions
15. Peppers
16. Squash/Zucchini
17. All Other Vegetables

### Other Dried Products

18. Herbs
19. Jerky (4 strips)
20. Noodles (1 cup)
21. All Other Dried Products

## Department 7 - Bath Products

Bath product rules: Exhibits must be made by the exhibitor and not previously entered at the SLV County Fair. Bath products should contain one appropriately labeled bar, bottle or container per entry.

### Homemade Soap

1. Made from a kit
2. Made from scratch
3. All Other Homemade Soap

### Homemade Lotion

4. Made from kit
5. Made from scratch
6. Salve
7. Serum
8. Lip Balm
9. All Other Homemade Lotion

### Homemade Aromatherapy

10. Oils
11. Salts
12. All Other Aromatherapy

## Department 8 – Needlework & Sewing

Sewing Rules: Items must be clean and prepared for judging, if needed. Exhibits must be made by the exhibitor and not previously entered at the SLV Fair. Judging is based on workmanship, proper fabric choice, choice of pattern, and general appearance.

### Sewing Classes

1. Dress
2. Jacket
3. Jumper
4. Suit
5. Blouse
6. Sleepwear
7. Shirt
8. Infants Wear
9. Skirt
10. Vest
11. Slacks
12. Garment, made from a kit
13. Coat
14. Pantsuit
15. Aprons
16. Tote Bag
17. Cosmetic Bag
18. All Other Sewing

### Decorative Stitching – Embroidery & Needlepoint

19. Hand Pillow Cases (1 pair)
20. Hand Tea Towels (set of 2)
21. Hand Tablecloth or Luncheon Cloth
22. Hand Counted X-stitch Picture
23. Hand counted X-stitch, other
24. Hand Scarves, Place Mats, or Napkins
25. Hand Candle Wicking
26. Miscellaneous Hand Embroidery
27. Machine Pillow Cases (1 pair)
28. Machine Tea Towels (Set of 2)
29. Machine Tablecloth or Luncheon Cloth
30. Machine Scarves, Place Mats, or Napkins
31. Miscellaneous Machine Embroidery
32. Needlepoint Pillow
33. Needlepoint Picture
34. Miscellaneous Needlepoint

### Crocheted

35. Hot Pads and Pot Holders
36. Afghan
37. Sweater
38. Pillow
39. Doily
40. Cape or Shawl
41. Scarf
42. Hat
43. Toy
44. Doll
45. Miscellaneous Crochet

### Knitted

46. Sweater
47. Afghan
48. Scarf
49. Toy
50. Baby
51. Hats
52. Miscellaneous Knitting
53. Tatted, other
54. Felting
55. Toy, Fabric
56. Plastic Canvas
57. Weaving
58. Hooked Rugs
59. Miscellaneous

### Miscellaneous Classes

## Department 9 - Quilting

Quilting Rules: Items must be clean and prepared for judging, if needed. Exhibits must be made by the exhibitor and not previously entered at the SLV Fair. Judging is based on workmanship, proper fabric choice, choice of pattern, and general appearance.

### Bed Size Quilt

1. Pieced, hand quilted
2. Pieced, machine quilted

3. Pieced by Individual, professional quilted

### Lap Quilt

4. Pieced, hand quilted
5. Pieced, machine quilted

6. Pieced by Individual, professional quilted

### Baby Quilt

7. Pieced, hand quilted
8. Pieced, machine quilted

9. Pieced by Individual, professional quilted

### Wall Hanging

10. Pieced, hand quilted
11. Pieced, machine quilted

12. Pieced by Individual, professional quilted

### Table Runner & Tops

13. Pieced, hand quilted
14. Pieced, machine quilted

15. Pieced by Individual, professional quilted

### Appliquéd – Hand

16. Pieced, hand quilted
17. Pieced, machine quilted

18. Pieced by Individual, professional quilted

### Appliquéd – Machine

19. Pieced, hand quilted
20. Pieced, machine quilted

21. Pieced by Individual, professional quilted

### Embroidered – Hand

22. Pieced, hand quilted
23. Pieced, machine quilted

24. Pieced by Individual, professional quilted

### Embroidered – Machine

25. Pieced, hand quilted
26. Pieced, machine quilted

27. Pieced by Individual, professional quilted

### Miscellaneous Quilts

28. Comforter, tied
29. Foundation Piecing
30. Quilt Top

31. Miscellaneous Quilting  
32. Panel Quilt  
33. Rag Quilt

## Department 10 - Crafts and Hobbies

Crafts and Hobbies Rules: Items must be clean for judging. Exhibits must be made by the exhibitor and not previously entered at the SLV County Fair.

### Legos and Construction Blocks

2. Kit - Moving
3. Kit – Non-Moving
4. Kit – With Improvements
5. Original Scene
6. Original House
7. Original, airplane – car – vehicle
8. Original Designs, other
9. Knex
10. Tinker Toys
11. Erector Sets
12. All Other Legos and Construction Blocks

### Recycled or Ecology

13. Popsicle Sticks
14. Cardboard
15. Pet Rocks
16. Pine Cones
17. Tin-Can Art
18. Glass Bottles
19. Glass with Fabric
20. Recycled Jewelry
21. Recycled Fabric
22. Clothes
23. Entire Doll
24. Bird Houses
25. All Other Recycled Or Ecology Exhibits

### Digital Cutting Machine

26. Clothing vinyl
27. Clothing, printed
28. Tumbler
29. Home décor
30. Other

### All Hobbies & Craft Classes

31. Beadwork
32. Jewelry
33. Yarn Work
34. Macramé
35. Handmade Furniture
36. Textile Painting
37. Stamped or Tooled Leather Work
38. Sewn Leather Work
39. Braiding
40. Ceramics, pre-formed
41. Wall Plaque
42. Dolls
43. Woodwork, cut & finished
44. Wood Carving, rough finished
45. Wood Carving, sanded
46. Wood Burning
47. Block Printing
48. Leaded Glass, 2 Dimensional
49. Leaded Glass, 3 dimensional
50. Etched Glass
51. Sand Blasted Glass
52. Artificial Flowers
53. Collections
54. Bone Work
55. Centerpiece Arrangement
56. Models
57. Rockets
58. Hand-painted China
59. Basket Weaving
60. Basketry
61. Wreaths
62. Holiday Decorations
63. Greeting Cards
64. Nature Made Crafts
65. Tole Painting
66. Soft Sculptures
67. Decorated Clothing, non-stitched
68. Calligraphy
69. Hand Spun Wool
70. Metal Parts Sculpture

- 71. Metal Art Welded
- 72. Metal Art Forged
- 73. Metal Art Cut
- 74. Paper Art
- 75. Scrapbooks
- 76. Restoration
- 77. Yard Art
- 78. Recycled Refurbished Craft

- 79. Playdough
- 80. Mosaics
- 81. Bird House
- 82. Fridge magnet
- 83. Paint by Number
- 84. Quill Work
- 85. 3D Printing
- 86. Any Other

### **Department 11 – Art**

Art Rules: Exhibits must be made by the exhibitor and not previously entered at the SLV County Fair. The date should be identifiable on art work (corner of art work or on the back). Artwork prepared for hanging or display is appreciated, matted or framed if possible.

#### **Acrylic**

- |  |   |
|--|---|
| <ul style="list-style-type: none"> <li>1. Landscape</li> <li>2. Still Life</li> <li>3. Portrait</li> </ul> | <ul style="list-style-type: none"> <li>4. Animal</li> <li>5. Floral</li> <li>6. Abstract</li> </ul> |
|--|---|

#### **Oils**

- |  |  |
|--|--|
| <ul style="list-style-type: none"> <li>7. Landscape</li> <li>8. Still Life</li> <li>9. Portrait</li> </ul> | <ul style="list-style-type: none"> <li>10. Animal</li> <li>11. Floral</li> <li>12. Abstract</li> </ul> |
|--|--|

#### **Watercolor Classes**

- |   |  |
|---|--|
| <ul style="list-style-type: none"> <li>13. Landscape</li> <li>14. Still Life</li> <li>15. Portrait</li> </ul> | <ul style="list-style-type: none"> <li>16. Animal</li> <li>17. Floral</li> <li>18. Abstract</li> </ul> |
|---|--|

#### **Pastels**

- |   |  |
|---|--|
| <ul style="list-style-type: none"> <li>19. Landscape</li> <li>20. Still Life</li> <li>21. Portrait</li> </ul> | <ul style="list-style-type: none"> <li>22. Animal</li> <li>23. Floral</li> <li>24. Abstract</li> </ul> |
|---|--|

#### **Pencil, Pen & Ink Classes**

- |   |  |
|---|--|
| <ul style="list-style-type: none"> <li>25. Landscape</li> <li>26. Still Life</li> <li>27. Portrait</li> </ul> | <ul style="list-style-type: none"> <li>28. Animal</li> <li>29. Floral</li> <li>30. Abstract</li> </ul> |
|---|--|

#### **Crayons**

- |   |  |
|---|--|
| <ul style="list-style-type: none"> <li>31. Landscape</li> <li>32. Still Life</li> <li>33. Portrait</li> </ul> | <ul style="list-style-type: none"> <li>34. Animal</li> <li>35. Floral</li> <li>36. Abstract</li> </ul> |
|---|--|

#### **Markers**

- |   |  |
|---|--|
| <ul style="list-style-type: none"> <li>37. Landscape</li> <li>38. Still Life</li> </ul> | <ul style="list-style-type: none"> <li>39. Portrait</li> <li>40. Animal</li> </ul> |
|---|--|

- 41. Floral
- 42. Abstract  
Mixed Media
- 43. Landscape
- 44. Still Life

**Scratchboard**

- 49. Landscape
- 50. Still Life
- 51. Portrait

**Computer Art**

- 55. Landscape
- 56. Still Life
- 57. Portrait

**Airbrush**

- 61. Landscape
- 62. Still Life
- 63. Portrait

**Tempura**

- 67. Landscape
- 68. Still Life
- 69. Portrait

**Charcoal**

- 73. Landscape
- 74. Still Life
- 75. Portrait

**Sculpture**

- 79. Clay
- 80. Metal
- 81. Ceramic

- 45. Portrait
- 46. Animal
- 47. Floral
- 48. Abstract

- 52. Animal
- 53. Floral
- 54. Abstract

- 58. Animal
- 59. Floral
- 60. Abstract

- 64. Animal
- 65. Floral
- 66. Abstract

- 70. Animal
- 71. Floral
- 72. Abstract

- 76. Animal
- 77. Floral
- 78. Abstract

- 82. Art Dough, soft
- 83. Art Dough, baked
- 84. Other

**Department 12- Photography**

Photography Rules: Exhibits must be made by the exhibitor and not previously entered at the SLV County Fair. Photographs must be taken by the exhibitor, framed or matted, and ready to hang. Scotch tape and string hangers are not recommended for hanging.

**Camera, Point & Shoot**

- 1. Ranch Life
- 2. Portrait
- 3. Landscape
- 4. Still Life
- 5. Floral

- 6. Abstract
- 7. Animal – Domestic
- 8. Animal – Wildlife
- 9. Action
- 10. Architecture
- 11. All Other Camera, Point & Shoot

**Camera, Color, Edited**

- 12. Ranch Life
- 13. Portrait
- 14. Landscape
- 15. Still Life
- 16. Floral
- 17. Abstract

- 18. Animal – Domestic
- 19. Animal – Wildlife
- 20. Action
- 21. Architecture
- 22. All Other Camera, Color, Edited

**Camera, Black and White, Edited**

- 23. Ranch Life
- 24. Portrait
- 25. Landscape
- 26. Still Life
- 27. Floral
- 28. Abstract

- 29. Animal – Domestic
- 30. Animal – Wildlife
- 31. Action
- 32. Architecture
- 33. All Other, Camera, B&W, Edited

**Cell Phone, Point & Shoot**

- 34. Ranch Life
- 35. Portrait
- 36. Landscape
- 37. Still Life
- 38. Floral
- 39. Abstract

- 40. Animal – Domestic
- 41. Animal – Wildlife
- 42. Action
- 43. Architecture
- 44. All Other Cell Phone Point & Shoot

**Cell Phone, Color, Edited**

- 45. Ranch Life
- 46. Portrait
- 47. Landscape
- 48. Still Life
- 49. Floral
- 50. Abstract

- 51. Animal – Domestic
- 52. Animal – Wildlife
- 53. Action
- 54. Architecture
- 55. All Other Cell Phone, Color, Edited

**Cell Phone, Black & White, Edited**

- 56. Ranch Life
- 57. Portrait
- 58. Landscape
- 59. Still Life
- 60. Floral
- 61. Abstract

- 62. Animal – Domestic
- 63. Animal – Wildlife
- 64. Action
- 65. Architecture
- 66. All Other Cell Phone, B&W, Edited

# 4-H GENERAL & CONSUMER SCIENCE

Indoor Building

**Overall Superintendent:**

**Department Superintendents:**

**Entry fee:** \$2 per project

## **Premiums:**

Division Champion \$100 plus award

Division Reserve Champion \$75 plus award

Unit Champion \$10

Unit Reserve \$9

Blue Award \$8

Red Award \$7

White Award \$5

Members will be paid on all placing awards. Premiums will be distributed to exhibitors by the Fair Board at a later date.

## **4-H General Exhibit Regulations**

All exhibitors are expected to help with their set up or tear down assignment. Please see the schedule for set up and tear down times.

1. Exhibit entries will be done online.
2. All Home Ec. & General 4-H exhibitors will report with their projects to the designated Superintendent for each department during check in time (see schedule). Signs will be posted indicating where projects may be checked in.
  - a. Interview judging will be scheduled during Check-In. The exhibitor will be given an estimated time of interview from the Superintendent. Generally, interview slots are given on a first-come, first-served basis, but preference will be given to kids participating in concurrent shows.
  - b. Interview judging is an evaluation technique designed to provide the 4-H member an opportunity to discuss with the judge achievements accomplished, improvements needed, and plans for advancement in the project. Participating in the interview process is optional. The choice to participate in the interview judging will not affect the final exhibit placing.
3. Eligibility: Exhibitors in the divisions of this department must be bona fide members of Colorado 4-H whose project work (must be the 4-H member's own work and sources must be cited; plagiarism will not be tolerated) and records are certified and up-to-date and deemed eligible by the appropriate Extension Agent. In addition, exhibitors must be at least eight years of age, must not have reached their 19<sup>th</sup> birthday as of December 31 of the current enrollment year and must satisfy other eligibility requirements (if specified) for a class, to compete in that class.
4. Review specific exhibit requirements in the Colorado State Fair Exhibit Requirements document, available on the Colorado 4-H website at: <http://co4h.colostate.edu/statefair/StateFairExhibitReq.pdf>
5. 4-H members may enter only once in the same class from each county.
6. If a member enrolls in two units of the same project (for example, Unit 2 and Unit 3 of Leathercraft), the member must exhibit in the higher level – Unit 3 in this case). When a member takes two units at the same time, the member should master the skills of the lower unit and therefore exhibit in the higher unit.
7. Members must be enrolled in the project (these projects may be broken down into units, level or categories) in which they exhibit.
8. A completed record book must accompany all exhibited 4-H projects; not having a record book will result in a disqualification.
9. 4-H e-Records may be completed by pencil, ink or computer. The choice will not affect judging. Each



- exhibit requires a sturdy binder. Do not use record book binders that are clear plastic with sliders.
10. All parts of the exhibits (includes record book) must be accompanied by a completed label containing the Name, Age, Project, Unit and County of the exhibitor. For security reasons, do not list the member address on projects.
  11. Display boards must meet the specifications. The standardized display board size of 4 ft x 3 ft is to be used for 4-H projects.
  12. Most projects are divided by Junior, Intermediate and Senior age groups. The age for Juniors is 8-10, Intermediates is 11-13, and Seniors is 14-18. All ages are determined as of December 31 of the current enrollment year.
  13. All exhibits must be displayed and remain on display for the duration of the fair. Any and all exhibits that are removed prior to release on Friday, after the sale begins, will forfeit all awards.
  14. Any exhibit released for Fashion Revue must be returned for display on the same day.
  15. The management will not be responsible for loss or damage to exhibits, though it will use all care to ensure their safety.
  16. Any exhibitor selected to compete at the Colorado State Fair must have their food and/or cake exhibits to the SLV Extension Office the Monday following the SLV fair, no later than noon. All other (non-food) indoor projects selected to go to the State Fair will be taken by the Extension Staff, and transported to the Extension Office for transport to the State Fair. You may come into the Extension Office between 10 am & noon the Monday following the SLV Fair to make any changes to projects or record books before they go to the State Fair. All changes must be completed in the office.

### Fair Judging/Ribbon Awards

1. 4-H projects are judged by the Danish Ribbon system. Based upon the following quality and standards, each exhibit is awarded a Blue, Red or White award ribbon:
  - a. **Blue:** Exhibit meets exhibit requirements and is of high quality.
  - b. **Red:** Exhibit meets exhibit requirements and is of average quality.
  - c. **White:** Exhibit does not meet all exhibit requirements and/or is below average quality (needs improvement).
2. After Blue, Red and White ribbons are awarded, the American System will be used to rank the 4-H exhibits within classes, units and divisions. This system uses product standards and fulfillment of exhibit requirements to rank exhibits. It also uses the idea of competition among exhibitors to establish ranking.
3. The judge will indicate which exhibit is the top blue in each class in each County, if merited. This is the exhibit designated for the State Fair.
4. Each Unit may award one Unit Champion and one Unit Reserve Champion, if merited.
5. Only Blue award exhibits will be considered for Champion and Reserve Champion ribbons.
6. Only Unit Champion or Unit Reserve Champion exhibits will be considered for Division Champion and Division Reserve Champion.
7. Exhibits that do not meet exhibit standards and requirements will not be considered for Champion, Reserve Champion or Blue ribbons.
8. All exhibits not selected for the State Fair will be released on Friday, August 9 after the Livestock Sale begins.
9. Projects selected to enter at the Colorado State Fair will be taken to the Extension Office to be taken to the Colorado State Fair. **Exceptions are cakes, foods and exhibits that were told to make corrections to the project and/or record book.**
10. All projects taken home for corrections or to be redone, need to be at the Extension office no later than noon the Monday following the SLV Fair.

**For all Area & State exhibit requirements and Classes refer to the 2024 Colorado State Fair 4-H Exhibit Requirements.**

<https://co4h.colostate.edu/statefair/StateFairExhibitReq.pdf>

# SLV Area Only Divisions:

## Lego Building

### Lego Unit Guidelines

1. All structures must be constructed from LEGO pieces or other toy building blocks only. No wood, glue, metal, etc. may be used to construct the structures or models.
2. The project must be presented on a LEGO construction board or plywood and must be attached to the board.
3. Your LEGO pieces must be completed on all sides for viewing.
4. You must do all the construction yourself.
5. You must complete and turn in a record book.

### Lego Units:

1. Lego vehicle from kit (car, plane, boat, etc.) Size limit 14" X 22"
2. Lego structure from kit (house, bridge, etc.) Size limit 14" X 22"
3. Lego non-motorized robot from kit --Size limit 14" X 22"
4. Lego mechanical from kit (w/motor and must move) Size limit 14" X 22"
5. Lego plate of food
6. Lego animal -- Size limit 14" X 22" (must be original not from a kit)
7. Lego vehicle -- Size limit 14" X 22" (must be original not from a kit)
8. Lego structure -- Size limit 14" X 22" (must be original not from a kit)
9. Lego non-motorized robot -- Size limit 14" X 22"
10. Lego model themed kit (i.e. star wars)
11. Lego model themed set (i.e. 2-5 Star Wars themed models from a kit)
12. Any other Lego model not listed above

## Ag Production

### All exhibits will consist of the following:

1. A project manual
2. A display board illustrating a topic investigated during the project year. The standardized display board size of 4 ft. x 3 ft. is to be used with 4-H projects.
3. Project will be evaluated on the quality of the information completed in the e-Record (25 percent) and the quality of the exhibit (75 percent).

### Ag Production Units:

1. Farm Cents Unit 1
2. Farm Cents Unit 2
3. Farm Cents Unit 3
4. Production Animals Unit 1
5. Production Crops Unit 2
6. Production Other Unit 3
7. Heavy Machinery Unit 1
8. Heavy Machinery Unit 2
9. Heavy Machinery Unit 3

# Community Dinner

## FRIDAY, AUGUST 9, 4:00-6:00 PM



Enjoy a great meal of pulled pork, baked beans, coleslaw dessert and more on Friday night before the SLV Fair Junior Market Livestock Sale!

Proceeds help support the Valley 4-H clubs and counties. These groups do community service, perform 4-H outreach, and provide funds to local 4-Hers to attend leadership camps and conferences.

Buy a ticket at the door!

# GENERAL LIVESTOCK RULES

The San Luis Valley Fair Board expects all individuals to practice ethical and humane treatment of animals consistent with accepted animal husbandry practices. The following are termed “unethical practices”:

1. Surgical procedures, drugging, tubing, or injecting (any oil, glycerin or like substance) which could affect the animal’s performance or alter its natural contour, conformation, or appearance
2. Striking animals to cause swelling, using electrical contrivance, or other similar practices
3. Altering, changing, defacing or modifying of the markings and the anatomical structure of an animal
4. External applications of such things as liniments and blistering agents (irritant, counterirritant, or similar substance) that would cause an edematous condition.
5. Use of ice packs or other refrigerants to alter the quality of the finish of an animal.

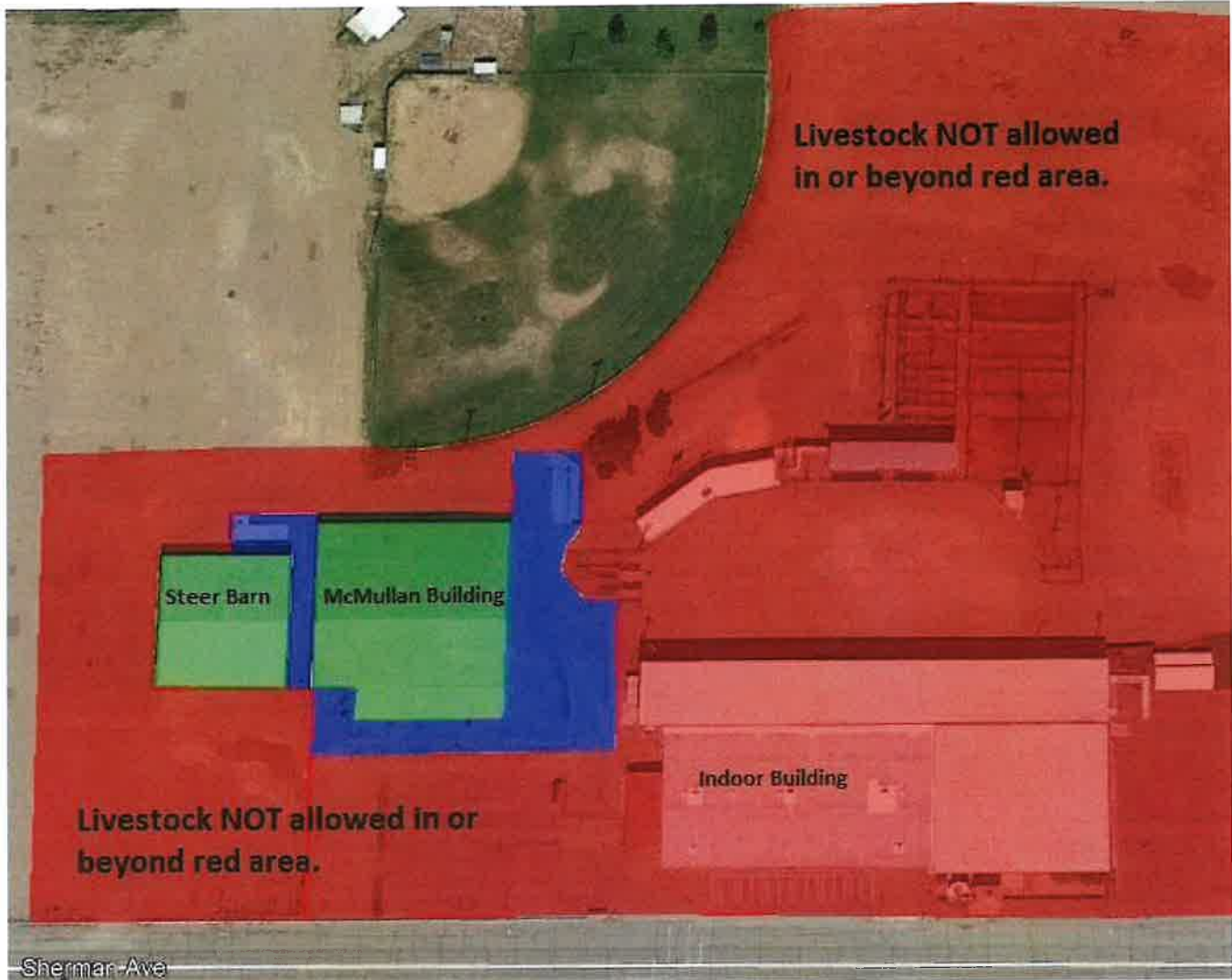
***Any exhibitor/individual found guilty of any of the above listed or any other practice deemed unethical by the San Luis Valley Fair Board may be subject to forfeiture of all privileges, awards, and premiums and to such other penalty deemed appropriate by the Fair Board, or may be subject to prosecution under CRS 18-9-207 Tampering or Drugging Livestock.***

**The following practices are not allowed:**

1. Towels immersed in ice water; wet towels only will be acceptable.
2. An artificial tail head or tail fin, artificial poll, or adding any hair or hair like substance.

## DESIGNATED AREA MAP

Once market livestock animals are unloaded, they are **NOT** allowed in the **red** shaded area for any reason.



# OPEN LIVESTOCK DIVISION

(Participation from the community encouraged)

**Overall Livestock Superintendent: Mark Brown (719) 588-1551**

## **Division: MIKE KELLEY MEMORIAL OPEN BARROW SHOW**

**Entry fee:** \$15 due day of show

1. The open show is for Barrows only! Barrows must be born after December 15, 2023.
2. Show is open to all showmen and/or relatives of **SLV Fair Participants**.
3. Participants can be of any age since it is an Open Show.
4. Barrows do not need to be tagged unless they are intended for both the Open Show and the Market Swine Show.
5. Showmen will declare weights and barrows will be divided into as near equal classes as feasible by weight.
6. All barrows must be washed and clean prior to weigh-in. Those not clean will be disqualified.
7. Entry fees will be jackpotted between class winners.
8. Judge's decisions are final.
9. The Grand Champion Barrow will be awarded \$500
10. All entries in this show are subject to the General Livestock Rules.
11. Barrows that are not going to participate in the 4-H/FFA Market Swine Show need to be removed from the grounds immediately following the show.
12. The Open Barrow Show does not qualify any participant for the SLV Fair Junior Market Livestock Sale.
13. 4-H/FFA Market entries must be reweighed at regular weigh in.

# JUNIOR LIVESTOCK DIVISION

*Overall Livestock Superintendent: Mark Brown (719) 588-1551*

## GENERAL LIVESTOCK RULES & REGULATIONS

### NOTICE TO ALL LIVESTOCK EXHIBITORS:

Stalls and pens must be kept neat and supplied with necessary clean bedding. Wood shavings will be available for sale at a reasonable rate. Dairy goats may use straw but it must be cleaned upon check-out. Wood shavings will be allowed in all pens for bedding. Exhibitors may use muzzles, please see species specific rules for more information.

1. By submitting a fair entry, each animal exhibitor and their parent/guardian agree that they have read the policies, rules, and regulations printed in this book and will abide by them. It also indicates that they understand the consequences of, and penalties provided for actions by the policies, rules, and regulations. It is further consent that any action, which contravenes these rules and is in violation of federal or state regulations, may be reported to appropriate law enforcement authorities with jurisdiction over such infractions without recourse against the SLV Fair Board.
2. **ALL MARKET LIVESTOCK EXHIBITORS MUST ATTEND THE MANDATORY MEETING HELD IN THE MCMULLEN BUILDING SHOW ARENA, SEE SCHEDULE FOR TIME.**
3. The Livestock Building will be closed from 10:00 pm-6:00 am while livestock are present.
4. **2024 FAIR ENTRIES AND PAYMENTS MUST BE POSTMARKED AND/OR RECEIVED NO LATER THAN JULY 12, 2024. ANY ENTRY RECEIVED OR POSTMARKED JULY 13, 2024 THROUGH JULY 19, 2024 WILL BE SUBJECT TO A \$50 LATE FEE PER EXHIBITOR. NO ENTRIES WILL BE ACCEPTED AFTER THIS DATE. NO EXCEPTIONS.**
5. All exhibitors are expected to help with their set up or tear down assignment. **There will be a \$50 fee charged if the exhibitor does NOT help with set up and clean up within their project area. This fee will be deducted from their Sale Check.** \*Horse specific set up/tear down times are listed in the horse section.
6. Only San Luis Valley 4-H/FFA members enrolled and in good standing, in the current year's program may exhibit in this Division. Members must be enrolled in 4-H/FFA for the project they exhibit and every animal must be a 4-H/FFA project.
7. No 4-H/FFA exhibitor shall conspire with another person(s) to intentionally violate these rules or knowingly contribute or cooperate with another person(s) either by affirmative action or inaction to violate these rules. Violation of this shall subject such individual(s) to disciplinary action. The application of these rules provides for absolute responsibility of an animal's condition to the 4-H/FFA exhibitor whether or not he/she was actually instrumental in or had actual knowledge of the treatment of the animal in contravention of these rules.
8. Exhibitors of animals at the SLV Fair shall at all times comport themselves with honesty and good sportsmanship. Their conduct in this competitive environment shall always reflect the highest standards of honor and dignity to promote the advancement of agricultural education. All leaders working with 4-H/FFA exhibitors are under an affirmative responsibility to do more than avoid improper conduct or questionable acts. When an individual or exhibitor is guilty of unsportsmanlike conduct the SLV Fair Board can suspend the privilege of the person to attend or participate in future San Luis Valley Fairs for such a period as judged appropriate.
9. 4-H/FFA leaders, fitters, breeders, parents, and family members (over the age of 12) may assist exhibitors in fitting, caring for and handling livestock. Such assistance must be educational and demonstrational, or a matter of safety, and the exhibitor must be present and actively involved when such assistance is provided. The SLV Fair Board has the right to disqualify an exhibitor for disregarding this rule.
10. The exhibitor must own breeding animals by May 1, 2024 (Beef, Goat, Sheep, Swine, Dairy, Poultry, Egg

Production Poultry, and Exhibition Poultry). Exhibitors must prove ownership, by bill of sale or registration papers, if requested by the Superintendent. Misrepresentation of ownership, age, or any facts relating thereto is prohibited.

11. The exhibitor must own market animals by beginning weigh in/tag date. No substitutions can be made due to loss of an animal after June 1, 2024. Eligible exhibitors from the same family (siblings or same guardian) may weigh/tag family extra animals equal to 1 less than the number of family members in that project (Example: 3 exhibitors in a market project may tag/weigh up to two extra animals). This will only apply to enrolled 4-H/FFA members of the same family. Changing tagged and identified animals between family members will not be allowed.
12. The Exhibitor must own Market Turkeys and Waterfowl by May 15, 2024.
13. The Exhibitor must own Market Chickens by June 15, 2024.
14. Beef, goats, lambs, and pigs must be ear tagged on beginning weigh in/tag dates. Swine must be ear tagged and ear notch verified. Lost tags must be reported to a Fair Board member, Extension Agent or Species Superintendent within 48 hours upon animal losing the tag. No animals will be tagged at final weigh in: NO TAG – NO WEIGH IN. See specific divisions for final weigh in and Check-in dates, times, and entry fees.
15. All poultry must be banded on banding day, please contact the Extension office or Superintendent for more information on banding dates & procedures.
16. Market animals are allowed to cross the scale only one time at final weigh-in (except, swine, meat goats and sheep weighing within two pounds under minimum weight or two pounds over maximum weight) in which they may be immediately re-weighed if the exhibitor chooses.
17. Each exhibitor may enter up to four (4) market animal entries per species (including poultry and rabbits).
18. The same animal cannot be shown in both breeding and market divisions.
19. All 4-H/FFA livestock exhibitors will be assigned an exhibitor's number that must be worn by the exhibitor while showing.
20. All animals must be on grounds and entered at the time designated to be eligible to show.
21. Animals must be shown by the 4-H/FFA exhibitor, however, the Fair Board may allow another SLV 4-H/FFA exhibitor to substitute in showing in case of illness, injury, or death. If an exhibitor has two animals in the same class another SLV 4-H/FFA exhibitor may show one of the animals.
22. All animals need to be fed and watered at least twice daily, and otherwise cared for during the Fair. Exhibitors are expected to help keep exhibit areas, grooming areas, and barn perimeters clean and attractive. All animals and other exhibits should be kept clean and in a presentable condition at all times. The Superintendent or SLV Fair Board reserves the right to feed and water neglected animals. Any animal deemed neglected will not be eligible for exhibition or sale.
23. No parents or leaders are allowed in the show ring unless the Superintendent approves them.
24. A veterinarian will be on call during the San Luis Valley Fair. All animals will be subject to health and soundness inspection; it is mandatory that all animals be checked for evidence of infectious or contagious disease. Animals showing evidence of contagious or infectious diseases or any animal originating from a herd under quarantine because of an infectious or contagious disease shall be ineligible for admission. An ill or unsound animal will not be allowed to participate. The Veterinarian, SLV Fair Board and/or the Superintendent will release any animal during the Fair, found to be non-acceptable.
25. Any market male animal that exhibits the characteristics or traits of an intact male may be disqualified at any time. Cryptorchid or short scrotum animals will not be eligible to show or sell.
26. At any time after an animal arrives at the Fair, the use of drugs and/or medications for the sole purpose of protecting the health of the animal shall be administered or supervised by a licensed veterinarian with the species superintendent, and a written report filed with the San Luis Valley Fair Board and placed in the official entry book. A Superintendent or the SLV Fair Board has the right to call for the services of a veterinarian in the treatment of a sick animal (if the exhibitor is not available). Any veterinary fees are the responsibility of the exhibitor.



27. The San Luis Valley Fair supports and endorses the USDA Wholesome Meat Act and requires all exhibitors to be in compliance. The extension office will hold all compliance forms and report who is not in compliance before the fair begins.
28. Animals shall be presented at the SLV Fair where they will enter the food chain free of volatile drug residues. The act of entering an animal in the SLV Fair is the giving of consent by the 4-H/FFA exhibitor to the SLV Fair Board to obtain any specimens of urine, saliva, blood, or other substances from the animal to be used in testing. If the laboratory report on the analysis of saliva, urine, blood, or other sample taken from livestock indicates the presence of forbidden drugs or medication, this shall be prima facie evidence such substance has been administered to the animal either internally or externally. It is presumed that the sample of urine, saliva, blood, or other substance tested by the laboratory to which it is sent is the one taken from the animal in question, its integrity is preserved and all procedures of said collection and preservation, transfer to the laboratory and analysis of the sample are correct and accurate and the report received from the laboratory pertains to the sample taken from the animal in question and correctly reflects the condition of the animal at the time the sample was taken, with the burden on the exhibitor or absolutely responsible person to prove otherwise.
29. If any animal, exhibitor, or individual is being a danger to themselves or others, the SLV Fair Board and/or the Superintendent may disqualify the animal, exhibitor, or individual and take other appropriate action for the wellbeing and safety of all SLV Fair participants.
30. No animals may be released from the Fairgrounds without prior approval of the species Superintendent. All non-sale animals must be removed from the Fairgrounds by 8:00 pm on the Thursday before the auction, or a \$100 charge will be assessed.
31. The species Superintendents will make stall or pen assignments. It shall be at the discretion of the superintendent, not club, superintendents have the discretion to change pen assignments.
32. Each animal exhibited will be awarded a placing ribbon through 10th place.
33. The first-place animal of each class will compete for Breeding/Market Division Champion. After the Breeding/ Market Champion is selected, the second-place animal in the class furnishing the Champion then competes with the remaining first place animals for Reserve Breeding/Market Champion.
34. If the Superintendent divides the entries into classes for the objective of determining breed champions and the result is less than 5 entries in that class, then only plaques and/or rosettes for Grand and Reserve Champion breed awards will be given.
35. Market animals that qualify for feeder or overweight classes will not be eligible for Grand or Reserve in their prospective market species show or for the Junior Livestock Sale.
36. Animals will not be allowed beyond posted designated areas, see the map in this book [Here](#).
37. Any negative behavior on the part of the exhibitor, family members or leaders directed toward any official or judge will result in disqualification and awards forfeited. If there is a question as to the rules or the judging of a class, adult family members or leaders must approach the Superintendent and not the judge. The Superintendent will then take the question to the judge(s) if warranted.
38. Direct criticism or interference with the Judge(s), Fair management, other exhibitors, or show officials before, during, or after the competitive event is prohibited and may result in disqualification. In the furtherance of their official duty all judges, Superintendents, and other show officials shall be treated with courtesy, cooperation, and respect and no person shall direct abusive or threatening conduct toward them. All questions or comments must be directed to species Superintendents.
39. All entries are also subject to specific species regulations printed in this book.
40. All livestock project exhibitors are required to complete a record book to complete their project. They must submit completed record books to the Extension office by Friday, September 13, and score a minimum of 70% on them to be eligible to enroll in that project the following year. Members who do not achieve the minimum 70% will be contacted and given one week to pick up their record book, make corrections and re-submit it to achieve a passing score. Youth who do not turn in their record book, or meet the minimum score requirement, will not be allowed to enroll in that project or compete in the fair

in that area in the next 4-H year.

41. All livestock exhibitors are required to wear appropriate show attire when competing. Shorts, tank tops, low-cut shirts, sheer blouses, flip flops, t-shirts, shirts with inappropriate messages or logos, ball caps, hats, or bare midriffs are not acceptable attire and may not be worn during a show event. Recommended dress is as follows: long or short-sleeved, button-down shirt or blouse, clean jeans or slacks with belt. Hard soled, closed-toed shoes or boots are recommended to protect feet. Rabbit and Chickens: jeans or slacks and long-sleeved shirts are preferred for safety. Dairy Cattle and Dairy Goats: white shirts and pants are recommended. The Fair Board or superintendents may refuse anyone improperly dressed entry into the show ring until said exhibitor is properly dressed.
42. Drenching will be allowed for cattle, sheep, and goats for hydration purposes only. An animal may only be drenched by the exhibitor or his/her parent/guardian. Drenching may not occur on the fairgrounds until after weigh in and until the waiver has been signed. Before any animal may be drenched by the exhibitor or the parent/guardian, a waiver must be signed and on file in the fair board office. The waiver releases the fair board of all liability to the animal that is being drenched. The animal's identification tag must also be on file.
43. Abuse of an animal in any form will not be allowed. Electric prods will not be allowed at any time. Any violation of this rule will result in immediate disqualification with no recourse.
44. Skin Conditioning products may be used as needed before and during judging. No products may be applied for the sale or after as they could affect meat quality.
45. The San Luis Valley Fair Board expects all individuals to practice ethical and humane treatment of animals consistent with accepted animal husbandry practices. The following are termed "unethical practices":
  1. Surgical procedures, drugging, tubing, or injecting (any oil, glycerin or like substance) which could affect the animal's performance or alter its natural contour, conformation, or appearance
  2. Striking animals to cause swelling, using electrical contrivance, or other similar practices
  3. Altering, changing, defacing or modifying of the markings and the anatomical structure of an animal
  4. External applications of such things as liniments and blistering agents (irritant, counterirritant, or similar substance) that would cause an edematous condition.
  5. Use of ice packs or other refrigerants to alter the quality of the finish of an animal.
46. The following practices are **NOT ALLOWED**:
  1. Towels immersed in ice water; wet towels only will be acceptable.
  2. Adding an artificial tail head or tail fin, artificial poll, or adding any hair or hair like substance.
  3. Removal, alteration, changing, or purposely damaging ear tags.
  4. Decorating animals with any unnecessary trappings during the judging.
47. In cases where unethical fitting or other unethical practices appear to have been attempted, the SLV Fair Board may appoint a veterinarian, official, or committee to inspect the entry. The Fair Board will follow a course of action based upon the findings and conclusions of the examining veterinarian, official, or committee.
48. All arena equipment is off limits to all exhibitors and guests unless it is being utilized for animal husbandry and shows. Penalties could include disqualification from the fair, loss of awards and possible forfeit of participation in next year's fair.

**Any exhibitor/individual found guilty of any of the above listed or any other practice deemed unethical by the San Luis Valley Fair Board may be subject to forfeiture of all privileges, awards, and premiums and to such other penalty deemed appropriate by the Fair Board, or may be subject to prosecution under CRS 18-9-207 Tampering or Drugging Livestock.**

**ALL DECISIONS OF THE SLV FAIR BOARD, SUPERINTENDENTS, OR JUDGES ARE FINAL.**

**An official photo must be taken of the animal you plan to sell. Seller must pick up the Buyer Thank You Photo, and the Buyer's Thank You Received Form, from the Extension office. Take this photo, and any other thank you gift you choose, to your buyer and have the buyer sign the Buyer's Thank You Received Form. You are responsible for getting the form to the Fair Board by October 6, 2024 or you will not sell in 2025.**

# SLV FAIR SALE RULES & REGULATIONS

See specific species regulations for additional sale rules or qualifications.

1. Only 4-H/FFA market livestock projects successfully exhibited and placed at the SLV Fair are eligible for the SLV Fair Junior Market Livestock Sale.
2. All Grand and Reserve Champion Market Beef, Swine, Sheep and Goats must sell. This also applies to exhibitors who have more than one Grand or Reserve Champion animal.
3. An exhibitor may sell only one animal (with the above exception), but may choose which species to sell if more than one species is shown.
4. Exhibitors MUST complete a sale designation form for each sale animal. Completed Sale Designation Forms and photo release forms must be turned in to the SLV Fair Office by 9:00 pm/or 1 hour after the end of the last market show (whichever is later).
5. The exhibitor is liable and will stand the loss without any recourse against the San Luis Valley Fair, if any drug residue is found rendering the carcass of any market animal unusable, as determined by an inspection officer at the packing plant.
6. Order of the 2024 SLV Fair Junior Market Livestock Sale:
  - o Goats, Poultry and Rabbits, Swine, Beef, Sheep
  - o All Champions, then All Reserve Champions.
  - o Herdsman Award winner, then Bred & Fed champions
  - o Sale will consist of 1/3 of each species on rotation.
7. Each SLV Junior Market Livestock Sale animal will be charged 3% of the purchase price; proceeds going to the SLV Fair Board. Sale photographs will be charged, and the buyer 4-H Dinner tickets will be charged at cost.
8. **THE SALE ORDER WILL BE STRICTLY ENFORCED. ONLY EXHIBITORS & ANIMALS PRESENT IN SALE ORDER WILL SELL.**

## **HERDSMAN AWARD**

Since special effort is required by livestock exhibitors to present their exhibits, Herdsman Awards are given. The following criteria will be used by species Superintendents for selection of the award recipients:

- A. Sportsmanship
- B. Cleanliness of stalls and/or animals
- C. Neatness of area around pen or stall
- D. Promptness in the show ring
- E. Courtesy to judges and others
- F. Regularity of feeding and watering of stock
- G. Respect and care of facilities
- H. Number of species and animals taken care of

## **AWARDS**

Herdsman Awards may be presented to an individual 4-H or FFA member participating in the following Breeding and Market Livestock projects: Beef, Goat, Sheep, Swine, Dairy Goats, Poultry and Rabbits.

## **BORN & RAISED**

**Entries in these classes will be judged immediately following feeder classes for Beef, Swine, Sheep and Market Goats.**

1. The purpose of the Born and Raised division is to promote and recognize exhibitors who are involved in animal production.
2. All General, Livestock and Department rules apply.
3. These classes are open to all Junior exhibitors who show a market goat, lamb, swine, or beef that was born to a dam that was owned by the Exhibitor or by a member of the immediate family (Mother, Father, Brother or Sister) at the time of birth. The animal must be born and raised in one of our six exhibiting counties (Saguache, Rio Grande, Alamosa, Costilla, Conejos and Mineral). Exhibitors may be asked to prove ownership. Failure to prove ownership will disqualify animals from the contest and exhibitors will relinquish awards.
4. In order to qualify for the Born and Raised class the animal must be entered and shown in their regular market class, make market weight and/or be market ready as described in each species market rules.
5. Born & Raised competitors should enter their animal(s) in the Born & Raised class, in addition to the general market class.
6. Feeder class and overweight animals are not eligible for Born & Raised.

## **AWARDS**

Grand and Reserve Champion in each species.

## SHOWMANSHIP CLASSES

1. One showmanship contest will be held for each species (Beef, Sheep, Swine, Market Goat, Dairy Goat, Poultry and Horse).
2. **Exhibitors should pre-register for showmanship classes online when submitting Fair entries.**
3. Participants must use their own animals to participate, and are responsible for the grooming and preparation of the animal.
4. There will be Junior, Intermediate and Senior divisions in showmanship contests. Age divisions will be: Junior (8-10), Intermediate (11-13), and Senior (14-18) including eligible FFA Members, as of December 31, 2023.
5. Champion, Reserve Champion, and through fifth place will be chosen for each species and age division.
6. Premiums will not be awarded for showmanship classes.
7. Any exhibitor winning a position in more than one species must declare which species they will use in the Round Robin contest. Exhibitors must declare species to be shown by the completion of the last showmanship class of the fair. If not declared by this time the alternate from the same species will then fill the vacant position at the Superintendent's discretion.
8. An animal must show in another class to be eligible to show in the showmanship class. Look at individual species sections of the book for class, fee and judging information.

## AWARDS

Grand & Reserve Champion by age division

## **ROUND ROBIN SHOWMANSHIP INFORMATION**

1. Exhibitors earn their placement in this contest during the species showmanship contests for Beef, Market Goat, Swine, Sheep, Horse and Dairy Goat.
2. All contestants must supply their animal for the contest. Additional animals will be selected to make up classes of ten. Animals will be selected and substituted at the species superintendent's discretion.
3. Contestants will be allowed to exhibit their own animal when competing in that species.
4. Exhibitors will be competing in their age groups - Senior, Intermediate, Junior - at the same time, on a rotating schedule of species.
5. Each rotation will be 15 minutes in length including the change to a new species.
6. Exhibitors who place 1st or 2nd in showmanship in more than one species must declare the species they will represent in Round Robin immediately following the last species showmanship contest.
7. No individual, who is not an exhibitor in the Round Robin, or a member of the Fair Board on official business or designated by the Horse Superintendent to help with the running of the competition, may enter the horse arena at any point between the start and end of the Round Robin competition.
8. The dress code for Horses can be found in the Horse section of the Fair Book under #12 of the Horse Regulations, see the Western (and Gymkhana) Division dress code. The Horse Superintendent will provide cowboy hats for the exhibitors who do not have access to one to use in the competition.

### **AWARDS**

Grand & Reserve Champion by age division

Overall Champion Showman (highest total score)

The awards will be announced (5-10 minutes) before the Junior Livestock Sale Friday night starting at 6 pm. All contestants need to be in the McMullen Building before the Sale to be prepared to receive their award.

# SLV FAIR AWARD SUMMARY

## Indoor

Indoor Division Champion \$100  
Indoor Division Reserve Champion \$75  
Unit Champion \$10  
Unit Reserve \$9  
Blue Award \$8  
Red Award \$7  
White Award \$5  
Member will be paid on all placing awards

## Market Species (Beef/Sheep/Swine/Goat)

Grand Champion - Buckle  
Reserve Grand Champion - Buckle  
Division/Breed Grand Champion  
Division/Breed Reserve Grand Champion  
Born and Raised Grand Champion  
Born and Raised Reserve Grand Champion  
Showmanship Sr., Int., Jr. Grand Champion  
Showmanship Sr., Int., Jr. Reserve Champion  
Showmanship Sr., Int., Jr. Top 5 (3rd-5th)  
Round Robin Sr., Int., Jr. Grand Champion  
Round Robin Sr., Int., Jr. Reserve Grand Champion  
Overall Round Robin Champion Showman  
Ribbons 1st-10th All Classes

## Breeding Species (Beef/Sheep/Swine/Production Goat)

Premiums  
1st \$10  
2nd \$9  
3rd \$8  
4th \$7  
5th and down \$5  
No more than 2 premiums will be awarded to an exhibitor under any one class.  
Supreme and Reserve Supreme Beef  
Supreme and Reserve Supreme Dairy  
Overall Grand and Reserve Gilt  
Breeding Sheep minimum of 5 for a division/breed  
Grand and Reserve Ewe  
Grand and Reserve Ram  
Champion and Reserve Champion Production Meat Doe  
Champion and Reserve Champion Production Meat Buck

## Dairy Goat

Premiums  
1st \$10  
2nd \$9  
3rd \$8  
4th \$7  
5th and down \$5  
No more than 2 premiums will be awarded to an exhibitor under any one class.  
Grand and Reserve Champion Jr. Doe by Breed  
Grand and Reserve Champion Sr. Doe by Breed  
Best in Show Jr. Doe  
Best in Show Sr. Doe  
Best Udder of Show

Showmanship Sr., Int., Jr. Grand Champion  
Showmanship Sr., Int., Jr. Reserve Grand Champion

## Breeding Rabbits

Premiums  
1st \$10  
2nd \$9  
3rd \$8  
4th \$7  
5th and down \$5  
No more than 2 premiums will be awarded to an exhibitor under any one class.  
Each Breed Class  
Best of Show & Reserve Best of Show Breeding Rabbit

## Market Rabbit

Grand & Reserve Champion Market Rabbit  
Showmanship Sr., Int., Jr., Grand Champion  
Showmanship Sr., Int., Jr., Reserve Grand Champion

## Breeding Poultry

Premiums  
1st \$10  
2nd \$9  
3rd \$8  
4th \$7  
5th and down \$5  
No more than 2 premiums will be awarded to an exhibitor under any one class  
Grand & Reserve Large Breeds  
Grand & Reserve Bantam Breeds  
Grand & Reserve Turkey  
Grand & Reserve Duck  
Grand & Reserve Goose  
Grand & Reserve Water Fowl  
Grand & Reserve Land Fowl  
Best of Show  
Reserve of Show

## Market Poultry

Grand & Reserve Champion Broiler Class  
Grand & Reserve Market Turkey  
Grand & Reserve Market Waterfowl  
Showmanship Sr., Int., Jr. Grand Champion  
Showmanship Sr., Int., Jr. Reserve Grand Champion

## Dog

Premiums - paid on Jr., Int., and Senior Showmanship Classes  
1st \$10  
2nd \$9  
3rd \$8  
4th \$7  
5th and down \$5  
Red, White and Blue Awards  
High Point Classes  
Supreme Overall Champion and Supreme Overall Reserve Champion



# BEEF

Superintendent: Clay Brown 719-480-2369

## Division: BREEDING BEEF

Entry fee: \$5 per head/pair

### Breeding Beef Regulations:

1. All entries are subject to the General Livestock Rules & Regulations.
2. Open to both registered and commercial breeding beef cattle.
3. Bulls over one year of age cannot be shown.
4. Breeding beef cattle over six months of age must have an official bangs tattoo, or test negative for brucellosis within 30 days prior to Fair. Health papers must be available upon request.
5. The superintendent will establish breed divisions as necessary and classes for breeds and/or divisions will be determined when entries are completed.
6. Classes without three or more entries may be shown individually or in combined classes at the discretion of the Superintendent/Judge(s).
7. All cattle will be tied in the tie out area, with a halter and neck rope.
8. All decisions of the superintendent and judges are final.
9. Coloring is permissible below the knee, provided it does not alter the natural color of the hair coat.

### Entries

#### BREEDING BEEF CLASSES

- Heifer Calf-calved after January 1, 2024
- Yearling Heifer-calved in 2023
- Cow-calf pair
- Bull Calf-calved after January 1, 2024
- FFA Heifer Wrangler exhibitors (please see CO FFA Association for more information)

#### AWARDS

Supreme and Reserve Supreme Overall Female  
(Selected from Grand Champion female from each division)

**Premiums:** Premiums are paid on classes within each division, as established by the superintendent.

1 <sup>st</sup>	\$10
2 <sup>nd</sup>	\$9
3 <sup>rd</sup>	\$8
4 <sup>th</sup>	\$7
5 <sup>th</sup> & down	\$5

**No more than 2 premiums will be awarded to an exhibitor under any one class. Premiums will be mailed.**

## **Division: MARKET BEEF**

**Entry fee:** \$5 per head. No fee for Bred & Fed classes.

### **Market Beef Regulations:**

1. All entries are subject to the General Livestock Rules & Regulations
2. Market Beef must have been weighed and tagged at the beginning weigh-in February. Please bring brand inspection papers to weigh in. All market beef must be dehorned by beginning weigh-in.
3. A committee of 3, appointed by the SLV Fair Board, will evaluate and determine market readiness of market beef entries. An animal deemed not finished will show in a feeder class, regardless of weight, and **WILL NOT SELL IN THE SLV FAIR JUNIOR MARKET LIVESTOCK SALE.**
4. All market beef must be tied with a halter and a neck rope in the tie out area of the livestock barn.
5. No beef animals over 24 months will be allowed to exhibit at fair
6. All heifers must be accompanied by a veterinarian's certificate verifying they are preg-checked open within 30 days of fair.

## **Entries**

### **MARKET BEEF CLASSES**

1. Market Beef, as determined by weight
2. Born and Raised (see rules [Here](#), enter general Market Beef and Born and Raised classes to participate)

### **AWARDS**

Grand & Reserve Champion Market Beef

Grand & Reserve Champion Born & Raised

**MARKET CLASSES DO NOT RECEIVE PREMIUMS**

## **Division: BEEF SHOWMANSHIP**

**Entry fee:** None

**See General Showmanship rules and awards on [Here](#).**

### **BEEF SHOWMANSHIP CLASSES**

1. Junior
2. Intermediate
3. Senior

## **Division: Dairy Cattle**

**Entry fee:** \$5 per head/pair

### **General Dairy Rules**

1. All entries are subject to the General Livestock Rules & Regulations.
2. Open to both registered and commercial breeding beef cattle. If registered, original registration papers must be provided at time of entry.
3. Bulls be shown.
4. Cattle over six months of age must have an official bangs tattoo, or test negative for brucellosis within 30 days prior to Fair. Health papers must be available upon request.
5. The superintendent will establish breed divisions as necessary and classes for breeds and/or divisions will be determined when entries are completed.
6. Classes without three or more entries may be shown individually or in combined classes at the discretion of the Superintendent/Judge(s).
7. All cattle will be tied in the tie out area, with a halter and neck rope.
8. Producing cows may be kept at a dairy. Exhibitors will be expected to visit the dairy during each month and make a one-page report. Exhibitors will be expected to care for mature cows during dry period.
9. All decisions of the superintendent and judges are final.

### **Entries**

**Age Classifications are as follows for all breeds:**

#### **Junior Females**

Junior Heifer Calf - born between January 1, 2024-April 30, 2024

Senior Heifer Calf - born between September 1, 2023-December 31, 2023

Junior Yearling Heifer - born after February 28, 2023 and before September 1, 2023

Senior Yearling Heifer - born after August 31, 2022 and before March 1, 2022 (Senior Yearlings in milk must show in two-year-old class)

#### **Senior Females**

Two-Year Old - born after August 31, 2022 and before September 1, 2022

Three-Year Old - born after August 31, 2021 and before September 1, 2021

Four-Year Old - born after August 31, 2020 and before September 1, 2020

Aged Cow - five years old and over, born before September 1, 2020

### **AWARDS**

Supreme and Reserve Supreme Overall Female

*(Selected from Grand Champion female from each division)*

### **Dairy Showmanship**

There will not be a showmanship class

# SWINE

*Superintendent: Heather Tillman (719) 849-3644*

## **Division: BREEDING SWINE**

**Entry fee:** \$5 per head

### **Breeding Swine Regulations:**

1. All entries are subject to the General Livestock Regulations & Rules.
2. Gilts ONLY of any breed may be shown.
3. Gilts must be under 12 months of age to be entered for show.
4. Breed divisions will be established as necessary. Divisions/lots without three or more entries may be shown individually or in combined lots at the discretion of the Superintendent/Judge(s).
5. Classes for breeds and/or divisions will be determined when the entries are completed.

### **Entries**

#### **BREEDING SWINE CLASSES**

1. As determined by Superintendent

#### **AWARDS**

Overall Grand & Reserve Champion Gilt

**Premiums:** Premiums are paid on classes within each division, as established by the superintendent.

1 <sup>st</sup>	\$10
2 <sup>nd</sup>	\$9
3 <sup>rd</sup>	\$8
4 <sup>th</sup>	\$7
5 <sup>th</sup> & down	\$5

**No more than 2 premiums will be awarded to an exhibitor under any one class. Premiums will be mailed.**

## Division: MARKET SWINE

Entry fee: \$5 per head. - No fee for Born & Raised classes.

### Market Swine Regulations:

1. All entries are subject to the General Livestock Regulations & Rules.
2. All hogs and ear tags must be washed, and cleaned prior to weigh-in, **after weigh-in and during the show**. Those not clean will be disqualified.
3. Market swine must be tagged and ear notched on the day of tagging. Any animals not brought to that event must contact the superintendent to get tags and identification forms. All market swine must have at least one notch in each ear. If any part of the identifying information is incorrect or missing on forms submitted by families that didn't attend the tagging date, the animal(s) may be disqualified at fair weigh in and not allowed to show.
4. All Jr. market hogs must be born after December 15, 2023.
5. Prior to final weigh in, all swine entries will have ear tag and healed ear notches verified with their nomination card. Any discrepancy in ear notches and ID tags will result in the entry being disqualified.
6. Market swine will be weighed and divided into as near equal classes as feasible by breed at final weigh in.
7. Market classes will be offered in the breed divisions listed below with the order of show, from lightweight through heavyweight divisions, in the following order:
  1. Berkshire
  2. Chester White & Landrace
  3. Duroc
  4. Hampshire
  5. Spots & Poland China
  6. Yorkshire
  7. Other Purebred Breeds
  8. Crossbreeds
8. Only swine weighing between 230 and 300 pounds will be eligible for the sale. Pigs under 230 will be shown in feeder classes; pigs over 300 will be shown in heavyweight classes and WILL NOT SELL.
9. If there are more than 24 animals in a breed division, they will be divided by light, medium, and heavy weight divisions for the final championship drive.
10. Hogs will be classified by a panel of three by appearance based on the breed classification standards listed below. If an exhibitor wishes to contest the classification, they must present registration papers indicating the breed of the hog, which have been transferred to or registered in the name of the junior exhibitor and not in a family or farm name by July 1, 2024. All entries must be owned and have primary care by the exhibitor as of June 1, 2024. Home raised pigs require a statement of such signed by a parent or guardian.

## Swine show classification standards

### Berkshire:

1. Predominantly black in color
2. Exhibiting Berkshire breed character (i.e. erect ears, white on face and tail, unless tail is docked)
3. 3 of 4 legs must be white (4 legs being white is ideal)
4. Must have white on nose
5. Can have white on face and ears (must not be solid black or white on face, ears must not be solid white)
6. No evidence of formation of a belt or excessive white on body

**Chester White:**

1. Must be solid white in color
2. Must exhibit Chester White breed character (i.e. down ears and medium size)
3. No colored hairs
4. Any indication of masking will be classed out
5. Pigmentation over the size of a US quarter will be classed out

**Duroc:**

1. Must be solid red in color
2. Exhibiting Duroc breed character (i.e. down ears)
3. No white or black hairs
4. No white pigmentation
5. Black spots can be no larger than a US quarter

**Hampshire:**

1. Predominantly black in color with a white belt encircling the body over the shoulders encompassing the front legs
2. Must exhibit Hampshire breed character (i.e. erect ears)
3. Sheath or navel must be black
4. No white above the cap of the hock or white behind the sheath or navel
5. Any white on the nose must not break the brim of the nose
6. Excessive freckling in the belt may be cause for being classed out.

**Hereford:**

1. Predominantly red in color
2. Must exhibit Hereford breed character (i.e. down ears)
3. Must have white head, ears, and 4 white legs

**Landrace:**

1. Must be solid white in color
2. Must exhibit Landrace breed character (i.e. large, down ears)
3. No colored hairs
4. Any indication of masking will be classed out
5. Pigmentation over the size of a US quarter will be classed out

**Poland China:**

1. Predominantly black in color
2. Must exhibit Poland China breed character (i.e. down ears, white on face and tail, unless tail is docked)
3. 3 of 4 legs must be white (4 being white is ideal)
4. Must have white on the nose
5. Can have white on face and ears (must not be solid black or white on face, ears must not be solid white)
6. No evidence or formation of a belt or excessive white on body

**Spott:**

1. Must be black and white in color
  2. Must exhibit Spot character (i.e. down ears)
  3. No red hairs
  4. Any indication of a belt will be classed out
  5. Hogs with solid black faces will be classed out
- Must be black and white in color.

### **Yorkshire:**

1. Must be solid white in color
2. Must exhibit Yorkshire breed character (i.e. erect ears)
3. No colored hairs
4. Any indication of masking will be classed out
5. Pigmentation over the size of a US quarter will be classed out.

### **Light Crossbred**

1. Hogs with any combination of white, blue, gray, sandy, rusty, orange, red or roan pigmentation or hair.
2. All pigs that do not meet the classifications of any other breeds. (i.e. Tri colored, calico's, blue's etc.)

### **Dark Crossbred**

1. Hogs with any combination of black and white hair or skin pigmentation only.
2. This includes solid black hogs.

## **Entries**

### **MARKET SWINE CLASSES**

1. Market Swine as determined by breed classification and weight.
2. Born & Raised (see rules [Here](#), enter general Market Swine and Born & Raised classes to participate)

### **AWARDS**

Grand & Reserve Champion will be awarded in each Division

Overall Grand & Reserve Market Swine.

Grand & Reserve Champion Born & Raised

**MARKET CLASSES DO NOT RECEIVE PREMIUMS**

## **Division: SWINE SHOWMANSHIP**

**Entry fee:** None

*See general showmanship rules and awards [Here](#).*

### **SWINE SHOWMANSHIP CLASSES**

- Junior
- Intermediate
- Senior

# SHEEP

Superintendents: Gracie Burkhart Porter (719) 937-1963

## Division: BREEDING SHEEP

Entry Fee: \$5 per head

### Breeding Sheep Regulations:

1. All entries are subject to the General Livestock Regulations & Rules.
2. Ages are determined as of January 1<sup>st</sup> of the show year.
3. Breed divisions will be established as listed below. If there is not a minimum of 5 animals in a breed, it will show in a combination with another breed that does not have 5 breed individuals. The class will be called All Other Breeds.
4. Breeding sheep may be shown shorn, or with not more than 12 months wool growth. WOOL BREEDS MUST show with a normal seasonal fleece length.
5. Classes for breeds and/or divisions will be determined after Check-in is complete.

### BREED DIVISIONS:

#### Breeding Show Ewes:

1. Wool Breeds
2. White Face (Dorset, Dorset Advantage) registered
3. Hair Sheep (Dorper)
4. Registered Hampshire
5. Registered Suffolk
6. All Crossbred and Commercial

#### Breeding Show Rams

1. Purebred
2. Crossbred

## Entries

### BREEDING SHEEP CLASSES

Classes set according to breeds available

1. Rams 1 year old & under 2
2. Ram lambs under one year
3. Ewes 1 year old & under 2
4. Ewe lambs under one year

### AWARDS

Grand & Reserve Champion Ewe

Grand & Reserve Champion Ram

**Premiums:** Premiums are paid on classes within each division, as established by the superintendent.

1 <sup>st</sup>	\$10
2 <sup>nd</sup>	\$9
3 <sup>rd</sup>	\$8
4 <sup>th</sup>	\$7
5 <sup>th</sup> & down	\$5

**No more than 2 premiums will be awarded to an exhibitor under any one class. Premiums will be mailed.**



## Division: MARKET SHEEP

Entry fee: \$5 per head. No fee for Born & Raised classes.

### Market Sheep Regulations:

1. All entries are subject to the General Livestock Regulations & Rules.
2. Market lambs must have been weighed and tagged at the beginning weigh-in in May.
3. Junior market lambs must be spring lambs born on or after December 15, 2023 and be carrying all milk teeth in place. Lambs may be mouthed prior to weigh-in.
4. Lambs must be close shorn (not more than ½ inch wool) and DRY at final weigh in.
5. All market ewe lambs will be required to have individual identification for scrapie premise ID tag. See general rule #23 on male animals. Contact number for the USDA to get scrapie tags. 303-231-5385 extension "0". Tags must be in place before the SLV fair.
6. Market sheep will be judged in weight classes.
7. Lambs under 100 lbs. at final weigh in will show in a feeder class and WILL NOT SELL. To be eligible for the SLV Fair Jr. Market Livestock Sale lambs must gain a minimum of 30 lbs. from beginning weigh in and must weigh a minimum of 100 lbs. Lambs NOT gaining 30 lbs. at final weigh in will be shown in a separate feeder class and WILL NOT SELL.
8. Market lamb exhibitors may use meshed or plastic muzzles at the SLV Fair. The muzzle style must allow lamb to drink. If an exhibitor elects to use a muzzle, they must display a sign explaining to the public why they are doing so.

### Entries

**MARKET SHEEP CLASSES** \*\* Each Market Sheep Division Grand and Reserve will come back for the Final Drive

1. Market Born & Raised (see rules [Here](#), must enter general Market Sheep and Born & Raised classes to participate)
2. Market Sheep
  1. Other Pure-Bred including Dorset, Dorper and Southdown (Must display proper breed characteristics, but do not have to be registered)
  2. Speckled Face
  3. Crossbred divided into light, medium and heavy weights

### AWARDS

Grand & Reserve Champion Market Sheep

Grand & Reserve Champion Born & Raised

**MARKET CLASSES DO NOT RECEIVE PREMIUMS**

## Division: SHEEP SHOWMANSHIP

Entry fee: None

See general showmanship rules and awards [Here](#).

### SHEEP SHOWMANSHIP CLASSES

1. Junior
2. Intermediate
3. Senior

# MEAT GOATS

*Superintendents: Mackenzy Becker (719) 850-8780*

## Division: PRODUCTION (BREEDING) MEAT GOATS

Entry fee: \$5 per head

### Breeding Meat Goat Regulations:

1. All entries in this division are subject to General Livestock Rules.
2. Ages are determined as of January 1st of the show year.
3. Classes without 3 or more entries may be shown individually or combined at discretion of the Superintendent/Judges.
4. Classes will be determined when the entries are completed.
5. No breed classes.

### Entries

#### JUNIOR KIDS CLASSES

1. Doe 0-3 months
2. Doe 3-6 months
3. Doe 6-9 months
4. Doe 9-12 months
5. Buck 0-3 months
6. Buck 3-6 months
7. Buck 6-9 months
8. Buck 9-12 months

#### SENIOR CLASSES

1. Doe 12-18 months
2. Doe 18-24 months
3. Doe 24-36 months
4. Doe 37+ months
5. Buck 12-18 months

#### GROUP CLASS

- Production of Doe, with current year's offspring

### AWARDS

Champion & Reserve Champion Production Meat Doe  
Champion & Reserve Champion Production Meat Buck

**Premiums:** Premiums are paid on classes within each division, as established by the superintendent.

1 <sup>st</sup>	\$10
2 <sup>nd</sup>	\$9
3 <sup>rd</sup>	\$8
4 <sup>th</sup>	\$7
5 <sup>th</sup> & down	\$5

**No more than 2 premiums will be awarded to an exhibitor under any one class. Premiums will be mailed.**

## Division: MARKET GOATS

Entry fee: \$5 per head. No fee for Born & Raised classes.

### Market Goat Regulations:

1. All entries are subject to the General Livestock Regulations & Rules.
2. Market Goats must be born after December 15, 2023 and be carrying all milk teeth in normal positions. Goats showing either or both of the first pair of permanent incisors will be disqualified.
3. Fully dehorned goats are preferred, however, if a goat has horns then ends must be tipped and completely blunt. No sharp points allowed. If a horn is tipped properly, you should be able to rest a dime on top of it.
4. Market Goats will be judged in weight classes.
5. To be eligible for the SLV Fair Jr. Market Livestock Sale, goats must gain a minimum of 20 lbs. from the beginning weigh in. Goat minimum weight is 60 lbs. Goats under 60 lbs. at final weigh in will be shown in a feeder class and WILL NOT SELL.
6. Goats should be closely clipped (3/4 inch) with no blocking before weigh-in and they must be shown with a collar or halter (no pinch collars, pronged chains, or training collars allowed).
7. Market Goat exhibitors may use meshed or plastic muzzles at the SLV Fair. The muzzle style must allow the goat to drink water. If an exhibitor elects to use a muzzle, they must display a sign explaining to the public why they are doing so.
8. All market does will be required to have individual identification for scrapie premise ID tag. See general rule #23 on male animals. Contact number for the USDA to get scrapie tags. 303-231-5385 extension "0". Tags must be in place before the SLV fair.

### Entries

#### MARKET GOAT CLASSES

1. Market Goats
2. Born & Raised (see rules [Here](#), enter general Market Goat and Born & Raised classes to participate)

#### AWARDS

Grand & Reserve Champion Market Goat

Grand & Reserve Champion Born & Raised

**MARKET CLASSES DO NOT RECEIVE PREMIUMS**

## Division: GOAT SHOWMANSHIP

Entry fee: None

See general showmanship rules and awards [Here](#).

#### GOAT SHOWMANSHIP CLASSES

1. Junior
2. Intermediate
3. Senior

# DAIRY GOATS

Superintendent: Sam Olsen

## Division: DAIRY GOATS

Entry fee: \$5 per animal for individual classes and \$5 per class for group classes

### Dairy Goat Regulations:

1. All entries in this class are subject to General Livestock Regulations & Rules.
2. Ages are determined as of January 1st of the show year.
3. All goats over three months of age must have been disbudded or dehorned before exhibiting. Goats with horns will be disqualified.
4. Dairy goats do not have to be registered.
5. White costume is preferred for exhibitors with 4-H or FFA accessories as applicable.
6. Lead equipment should consist of a collar or small link chain, properly fitted.
7. Milk does are shown with full udder. Does entered in milking competition must be milked out after the show under the supervision of the Dairy Goat Superintendent.
8. No bucks or wethers will be shown.
9. Breed divisions and age lots will be established as necessary. Classes without three or more entries may be shown individually or in combined classes at the discretion of the superintendent and/or judge(s).
10. All decisions of the superintendents and judge(s) are final.

### Entries

**DAIRY GOAT CLASSES** (Divisions according to breeds available)

#### Individual Classes

1. Jr. Kid Born May to July
2. Int. Kid Born March to April
3. Sr. Kid Born January to February
4. Yearling (non-milking) 1 year old and under
5. Milking Does 1 year & under 2
6. Milking Does 2 years & under 3
7. Milking Does 3 years & under 5
8. Milking Does 5 years & older

#### Group Classes

1. Get of Sire - group of 3 does by one sire
2. Dam & Daughter Class - Daughter & Dam in milk
3. Dairy Herd - at least 4 does in milk

### AWARDS

*For each division (class):*

Grand & Reserve Champion – Jr. Doe by Breed

Grand & Reserve Champion – Sr. Doe by Breed

Best in Show Jr. Doe

Best in Show Sr. Doe

Best Udder of Show

**Premiums:** Premiums are paid on classes within each division, as established by the superintendent.

1 <sup>st</sup>	\$10
2 <sup>nd</sup>	\$9
3 <sup>rd</sup>	\$8

4 <sup>th</sup>	\$7
5 <sup>th</sup> & down	\$5

**No more than 2 premiums will be awarded to an exhibitor under any one class. Premiums will be mailed.**

## **MILKING COMPETITION**

**Entry fee:** None

**Judging:** Sunday after Dairy Goat judging

1. All milking does entered in the SLV Fair are encouraged to compete.
2. Only 1 doe per exhibitor is allowed to compete.
3. Goats entered in the competition shall be on the premises by 11:00 am, Sunday, August 4 and milked dry by 1:00 pm. The Dairy Goat Superintendent shall check each doe to verify compliance with the preliminary milk out requirement. Refusal by the owner to comply with the milk out rule will eliminate the doe from the competition.
4. The exhibitor shall certify that the doe has not received Thyroprotein or any product which states on the label that it will increase milk production.
5. Milk must be weighed on a legal dairy type scale, recorded in pounds and tenths of pounds. Weighing will be done by the Superintendent or their representative.
6. Points will be awarded for the quantity of the milk for the period of time since the last kidding as follows:
  1. For each pound of milk, one point figured to the tenth pound.
  2. For each complete 10 days the goat has been in production since last kidding, 1-tenth of a point, with a maximum of 3.6 points.

## **AWARDS**

SLV Fair High-Point Milker

## **Division: DAIRY GOAT SHOWMANSHIP**

**Entry fee:** None

**Judging:** Following the Dairy Goat Show.

**See general showmanship rules and awards on [Here](#).**

## **DAIRY GOAT SHOWMANSHIP CLASSES**

1. Junior
2. Intermediate
3. Senior

# RABBITS

Superintendent: Crystal Voss (719) 850-0343

## Rabbit Regulations:

1. All entries are subject to the General Livestock Regulations & Rules.
2. Rabbits will be allowed only four (4) entries per species.
3. Breed divisions will be established as necessary.
4. All decisions of the superintendent and judge(s) are final.
5. All rabbits must be tattooed before Fair entries are due. Contact the Extension office for more information on tattoo dates and procedures.
6. Market rabbits must be tattooed at the official tattoo day.

## Division: BREEDING RABBITS

Entry fee: \$2 per head

## Entries

### BREEDING RABBIT CLASSES

*Note: This department will be conducted in the format of an ARBA rabbit show, with the criteria based upon ARBA Standards.*

1. Junior Doe (under six months & by breed)
2. Senior Doe (over six months & by breed)
3. Junior Buck (under six months & by breed)
4. Senior Buck (over six months & by breed)

### AWARDS

Each Breed Class

Best of Show & Reserve Best of Show Breeding Rabbit

**Premiums:** Premiums are paid on classes within each division, as established by the superintendent.

1 <sup>st</sup>	\$10
2 <sup>nd</sup>	\$9
3 <sup>rd</sup>	\$8
4 <sup>th</sup>	\$7
5 <sup>th</sup> & down	\$5

**No more than 2 premiums will be awarded to an exhibitor under any one class. Premiums will be mailed.**

## Division: MARKET RABBIT

Entry fee: \$2 per head

Non-sale rabbits must be checked out by Thursday, August 8, 2024, 9:00 pm.

### MARKET RABBIT CLASSES

1. Meat Pens:
  - 3 rabbits of the same breed & variety.
  - Not over 70 days of age
  - Minimum weight 3 lbs 8 oz and Maximum weight 5 lbs 8 oz per rabbit.
2. Single Fryer:
  - Not over 70 days of age

- Minimum weight 3 lbs 8 oz and Maximum weight 5 lbs 8 oz per rabbit.
- Single fryers may not be part of a meat pen.

**3. Rabbits will be allowed only four (4) entries per species.**

*\*Rabbits over 5.5 lbs. will be shown in overweight class and will not sell.*

## **AWARDS**

Grand & Reserve Champion Market Rabbit

**MARKET CLASSES DO NOT RECEIVE PREMIUMS**

## **Division: RABBIT SHOWMANSHIP**

**Entry fee:** None

**Judging:** Following the Rabbit Show.

**See general showmanship rules and awards [Here](#).**

## **RABBIT SHOWMANSHIP CLASSES**

1. Junior
2. Intermediate
3. Senior

# POULTRY

Superintendent: Christine Davis (719) 580-2474

## Poultry Regulations:

1. All entries are subject to the General Livestock Regulations & Rules.
2. Fowl will be allowed only four (4) entries per species.
3. Breed and species divisions will be established as necessary. Classes without three or more entries may be shown individually or in combined classes at the discretion of the superintendent and/or judges.
4. All entries must designate production, exhibition, or market classes and the exhibitor must be enrolled in the corresponding project. A member who has met all other market project requirements (such as meat quality assurance) and is enrolled in duck or geese projects will be allowed to exhibit market waterfowl.
  - o To exhibit in the exhibition show, members must be enrolled in Fowl- Show birds, Breeding Chickens, Breeding Turkeys, Duck or Geese projects.
  - o To exhibit in the egg production show, members must be enrolled in Breeding Chickens, Breeding Turkey, Duck or Geese projects.
  - o To exhibit in the exotic birds show, members must be enrolled in Fowl-Show birds.
5. Poultry exhibited in individual lots may also be exhibited in the production class.
6. All Breeding, egg production & exhibition animals must be owned by exhibitor by May 1 of current year.
7. A "cock" or "hen" is a bird hatched prior to January 1 of the show year. "Cockerel" and "pullet" are birds hatched after January 1 of the show year.
8. All ducks, geese and turkeys must have been hatched in the current show year.
9. All market animals must have been hatched after January 1, of the show year.
10. The exhibitor must own breeding Poultry, Egg Production Poultry, and Exhibition Poultry by May 1, 2024. Exhibitors must prove ownership, by bill of sale or registration papers, if requested by the Superintendent. Misrepresentation of ownership, age, or any facts relating thereto is prohibited.
11. The Exhibitor must own Market Turkeys and Waterfowl by May 15, 2024.
12. The Exhibitor must own Market Chickens by June 15, 2024.
13. Decisions of the superintendent and judges are final.
14. All poultry must be banded on banding day, please contact the Extension office or Superintendent for more information on banding dates & procedures.

## Division: BREEDING POULTRY

Entry fee: \$2 per head

## Entries

### BREEDING POULTRY CLASSES

Classes according to breeds available

1. Pullet
2. Cockerel
3. Hen
4. Cock
5. Exhibition-Old Trio (2 hens, 1 cock)
6. Exhibition-Young Trio (2 pullets, 1 cockerel)
7. Production Class (3 pullets of the same breed) all breeds compete together
8. Turkey-Young Tom
9. Turkey-Young Hen
10. Turkey-Old Tom



11. Turkey-Old Hen
12. Exotic Birds
13. Water Fowl-Drake
14. Water Fowl-Duck
15. Water Fowl-Goose

### **AWARDS**

Grand & Reserve Large Breeds  
Grand & Reserve Bantam Breeds  
Grand & Reserve Turkey  
Grand & Reserve Duck  
Grand & Reserve Goose  
Grand & Reserve Water Fowl  
Grand & Reserve Land Fowl  
Best of Show  
Reserve of Show

**Premiums:** Premiums are paid on classes within each division, as established by the superintendent.

1 <sup>st</sup>	\$10
2 <sup>nd</sup>	\$9
3 <sup>rd</sup>	\$8
4 <sup>th</sup>	\$7
5 <sup>th</sup> & down	\$5

**No more than 2 premiums will be awarded to an exhibitor under any one class. Premiums will be mailed.**

## **Division: MARKET POULTRY**

**Entry fee:** \$2 per head

### **MARKET POULTRY CLASSES**

1. Broiler Class (3 young birds up to 5 lbs. each) judged for meat qualities only
2. Single Fryer
3. Market Turkey (young single turkey of either sex) judged for meat qualities only
4. Market Water Fowl

### **AWARDS**

Grand & Reserve Champion Broiler Class

Grand & Reserve Market Turkey

Grand & Reserve Market Water Fowl

**MARKET CLASSES DO NOT RECEIVE PREMIUMS**

## **Division: POULTRY SHOWMANSHIP**

**Entry fee:** None

**Judging:** Following the Poultry Show.

**See general showmanship rules and awards [Here](#).**

### **POULTRY SHOWMANSHIP CLASSES**

1. Junior
2. Intermediate
3. Senior

# DOG

Superintendent: Amber Garrison

**Entry Fees:** \$2 per class No fee for showmanship.

## 4-H Dogs:

Premiums are paid on Junior, Intermediate and Senior Showmanship Classes.

1 <sup>st</sup>	\$10
2 <sup>nd</sup>	\$9
3 <sup>rd</sup>	\$8
4 <sup>th</sup>	\$7
5 <sup>th</sup> & down	\$5

**Premiums will be mailed.**

## Dog Regulations

1. Refer to 2024 Colorado State Fair 4-H Contest Requirements for Dog Trials pages 14-45.
2. If a member's dog does not receive a Rabies inoculation as required by the State of Colorado or a Parvo Virus shot as required by Fair Officials for all 4-H Dog Project participants, a certificate from the member's veterinarian stating the reason for these shots not being given must accompany the Dog ID.
3. Dogs must be on a leash at all times except when performing exercises off leash in the show ring.
4. Additional vaccinations may be required when necessary.
5. 4-H Dog Show officials and/or staff can and will dismiss any entrant or his/her family from the show for any mistreatment of dogs entered in this show. If a question should arise as to what constitutes "mistreatment," 4-H staff and/or officials will meet to decide appropriate action in each case.
6. Any negative behavior on the part of the exhibitor, family members or leaders directed toward any official or judge will result in disqualification and awards forfeited. If there is a question as to the rules or the judging of a class, adult family members or leaders must approach the Superintendent and not the judge. The Superintendent will then take the question to the judge(s) if warranted.
7. Dogs which are deemed to be a danger to people or other dogs can and will be removed from the show grounds and all classes forfeited. This will be determined by the Superintendent.
8. Protests must be submitted in writing and presented to the Superintendent within 24 hours after judging is announced. Protests will be handled by the Fair board.
9. All entrants will be responsible for cleaning up after their dogs. Failure to do so can be a basis for dismissal from the 4-H Dog Show and/or forfeiture of any placing.
10. Show management will have final decision authority. If needed, show management may request assistance with arbitration from a committee comprised of the superintendent, the judge(s) (if willing), and the leader and/or agent from the county involved (if present).
11. The Colorado State 4-H Dress Code is to be followed by all 4-H members, as well as adult leaders, advisors, and chaperones at all Colorado State 4-H sponsored events. Please check out the Colorado State 4-H Dress Code at: [www.colorado4h.org](http://www.colorado4h.org). In addition to the State Dress Code please adhere to the 4-H Dog Handlers Dress Code. **For more detailed information check out the Dog Resource Handbook.**
12. No dogs are allowed beyond the immediate vicinity of the Indoor building.
13. Entrants will pick up their armbands the day of the show. Each exhibitor will have the same armband number for all dogs he/she is exhibiting.
14. No set-up will be allowed anywhere near the rings. Allowable set-up areas will be designated and no one will be allowed to set up in any other areas. Spectators must stay at least ten feet from the ring.
15. Dog project members must complete record books prior to the fair. Record books are due by 4:30 pm on

Monday, July 22, 2024 at the CSU Extension Office in Monte Vista. Record books will be scored prior to the show and these scores will be used in calculations for the Supreme award.

**The general age groups for Dog Project are:**

1. Junior 8-10 years
2. Intermediate 11-13 years
3. Senior 14-18 years

**Age is determined by the member's age as of December 31, 2023.**

**EXHIBITOR ELIGIBILITY RULES:**

1. Member must be enrolled in the 4-H Dog Project.
2. All exhibitors must have complied with each county's eligibility requirements.
3. The member must own his/her project dog individually or partnership with immediate family members or guardians during the complete duration of the project year. The member must provide the majority of care for the dog(s). Entrants will be encouraged to use the Animal Care and Housing Form for Colorado 4-H Livestock Projects.
4. To qualify for State Fair exhibitors must achieve at least one qualifying score in each class of exhibition. Qualifying scores are 170 and above in Obedience and Showmanship and 70 and above in Rally. An acceptable record book must also be done and meet all guidelines required by the county.
5. Each exhibitor may exhibit a different dog in obedience, showmanship, and rally provided they meet qualifications (refer to rule 3). A member may be entered in multiple Obedience or Rally classes with different dogs, but each member may only enter Showmanship once.

**DOG ELIGIBILITY RULES:**

1. All dogs must have a Dog ID form on file with the CSU Extension Office by May 1, 2024. This form is to be completed electronically thru the 4HOnline system.
2. After once earning a qualifying score in competition as a 4- H project dog in Obedience or Rally, that same dog is no longer eligible for exhibition in that same division at any following fair except Grad Novice, Open, Grad Open and Utility Obedience classes and Rally Advanced-Excellent class.
3. A dog with any other rally or obedience title from any national dog association (AKC, UKC, CKC, ASCA etc.) is disqualified from entering the class for which the degree was awarded, or any lower class, except if that title was won less than four months before the fair. If the title was won less than four months before the 4-H State Dog Trial the dog is eligible for entry in the same class. Rule 2, above, takes precedence over this rule.
4. Bitches that are in heat, obviously pregnant, or lactating will not be allowed to compete in any classes.
5. Dogs in obvious pain from a previous illness or injury shall not be shown. If a dog is injured at a show, that dog will be excused from the ring. Consideration of a dog's physical disability needs to be addressed between the handler and project leader before starting the project. An approved veterinarian or qualified veterinary technician's decision on doubtful cases will be accepted as final.
6. Dates of approved current and effective vaccination of the dog for rabies and parvo-virus must be provided on the entry form. Each entrant is also required to enter this info into the state Dog ID electronically on the 4HOnline system and have it submitted by May 1, 2024.
7. If the qualified dog in Showmanship is injured or in season, a replacement may be used at the approval of the Superintendent. The replacement dog must fulfill all of the "dog eligibility requirements", must be carried in the member's record book, and must have a health certificate on file with the county office.
8. No dog with a physical or mental condition that would significantly impair their performance may participate. Some examples of these include (but are not limited to) hip dysplasia, disc problems, severely slipped stifles, shoulder problems, or being overweight. All 4-H'ers are highly encouraged to consult their veterinarian before beginning ability training. All dogs competing in agility are required to

have medical certification form signed by a veterinarian. A judge, superintendent or the county trainer at state and county events will have the authority to stop the performance of any dog whose soundness they question.

## **Obedience & Showmanship**

**The SLV Fair 4-H Dog Show is a 4-H show. As such, 4-H youth development principles are of primary importance. Show rules and guidelines are modeled after AKC rules.**

Exhibit requirements and rules for Obedience scoring are available from the SLV Area Extension Office.

### **Ribbon Awards**

Ribbons will be awarded to each exhibitor on the following basis:

#### **Obedience**

**Blue:** 170 or more points earned, provided each class exercise received 50 percent or more of the maximum point value of that exercise.

**Red:** 140 to 169 points or those who earned more but did not qualify for a blue ribbon.

**White:** 139 or fewer points earned.

#### **Showmanship**

**Blue:** 170 or more points earned **Red:** 140 to 169 points earned **White:** 139 or fewer points earned

#### **Rally**

**Blue:** 70-100 points earned

**Red:** 50-69 points earned

**White:** 49 or fewer points earned

### **Other Awards:**

Prizes and ribbons will be awarded to the member scoring the highest point total in the following classes:

#### **Obedience**

Overall Grand and Reserve Grand Champions

1. Sub Novice A, B Obedience
2. Sub Novice C (1st and 2nd year) Obedience
3. Novice A & B Obedience
4. Grad Novice Obedience
5. Advanced Obedience

#### **Showmanship**

Overall Grand and Reserve Grand Champions

1. Junior Novice and Open Showmanship
2. Intermediate Novice and Open Showmanship
3. Senior and Open Showmanship.

#### **Rally**

Overall Grand and Reserve Grand Champions

1. Rally Novice A & B
2. Rally Advanced A & B
3. Rally Excellent A & B
4. Rally Advanced/Excellent A & B

### **Agility Rules**

**The State 4-H Dog Agility Rules can be found at under Contest Requirements:**

<http://co4h.colostate.edu/program-areas/state-fair-information/>

## Agility Obstacles

The State 4-H Dog Agility Rules can be found at under Contest Requirements:

<http://co4h.colostate.edu/program-areas/state-fair-information/>

## Agility Waiver

The State 4-H Dog Agility Rules can be found at under Contest Requirements:

<http://co4h.colostate.edu/program-areas/state-fair-information/>

## Supreme Overall

Supreme Overall Grand Champion Supreme Overall Reserve Champion

Points will be totaled for Supreme on the following:

1. Record book 100 points
2. Showmanship 200 points
3. Obedience 200 points
4. Rally 100 points

## Division: DOG OBEDIENCE

### BEGINNER NOVICE OBEDIENCE CLASSES

1. Puppy Class
2. Beginner Novice A
3. Beginner Novice B
4. Beginner Novice C-1st year
5. Beginner Novice C-2nd year

### NOVICE OBEDIENCE CLASSES

1. Novice A
2. Novice B

### GRADUATE NOVICE OBEDIENCE CLASSES

1. Pre-Graduate Novice A
2. Pre-Graduate Novice B
3. Graduate Novice A
4. Graduate Novice B

### ADVANCED OBEDIENCE CLASSES

1. Open A
2. Open B
3. Graduate Open A
4. Graduate Open B
5. Utility A
6. Utility B

### VETERANS DIVISION

1. Novice Veterans
2. Pre-Graduate Novice Veterans
3. Graduate Novice Veterans
4. Open Veterans
5. Graduate Open Veterans
6. Utility Veterans

## Division: DOG SHOWMANSHIP

### SHOWMANSHIP CLASSES

1. Junior Novice Showmanship (8-10) \*
2. Junior Open Showmanship (8-10)
3. Intermediate Novice Showmanship (11-13)\*
4. Intermediate Open Showmanship (11-13)
5. Intermediate Advanced Showmanship (11-13)
6. Senior Novice Showmanship (14 & over) \*
7. Senior Open Showmanship (14 & over)
8. Senior Advanced Showmanship
9. Master Showman (Int. & Sr. - previous Grand or Reserve Champion winners at the Colorado State Fair)

*\*Denotes first year members only*

## **Division: DOG RALLY**

### **RALLY CLASSES**

1. Rally Novice A
2. Rally Novice B
3. Rally Intermediate A
4. Rally Intermediate B
5. Rally Advanced A
6. Rally Advanced B
7. Rally Excellent A
8. Rally Excellent B
9. Rally Advanced/Excellent A
10. Rally Advanced/Excellent B
11. Rally Masters A
12. Rally Masters B
13. Rally Team

## **Division: DOG AGILITY CLASSES**

1. Foundation Standard
2. Novice Standard - Regular
3. Novice Standard - Veteran
4. Intermediate Standard - Regular
5. Intermediate Standard - Veteran
6. Advanced Standard - Regular
7. Advanced Standard - Veteran
8. Foundation Jump
9. Novice Jump - Regular
10. Novice Jump - Veteran
11. Intermediate Jump - Regular
12. Intermediate Jump - Veteran
13. Advanced Jump - Regular
14. Advanced Jump - Veteran

# HORSE

Superintendents: Krista Culver (580) 618-4076

Ranch Horse: Leah Clark

Gymkhana: Jill Francis

**Exhibitors must check in with Horse Superintendent Krista Culver at set up to be eligible for awards.**

**Entry fee:** \$2 per horse per class, plus \$15 stock fee per exhibitor per cattle class. No fee for showmanship & written exam.

## **Judging:**

Horse Show: All Western classes will show first, followed by English classes.

Working Ranch Horse

Gymkhana

## **Written exam:**

The **2024 Horse Exhibitors Test** will be given on THURSDAY, AUGUST 1 from 10 am to noon at the Fairgrounds. Horse exhibitors who cannot take the test on this date may take the test on WEDNESDAY July 31, from 4-7pm at the SLV Extension Office.

**Horse Awards Ceremony** Following each portion: Show Day, Ranch Horse, and Gymkhana.

## **AWARDS**

**Showmanship:** Grand & Reserve Champion for Novice, Junior, Intermediate, Senior

**Western:** Grand & Reserve Champion for Novice, Junior, Intermediate, Senior

**English:** Grand & Reserve Champion for Novice, Junior, Intermediate, Senior

**Working Ranch Horse:** Grand & Reserve Champion for Junior, Intermediate, Senior

**Gymkhana:** Grand & Reserve Champion for Junior, Intermediate, and Senior.

\*Grand and Reserve awards will be calculated using the highest scores from totaling the placement points from all classes entered in each Division. Exhibitors must compete in Showmanship to be eligible for Grand and Reserve Western and English Awards. Exhibitors must complete the written exam to be eligible for all Grand and Reserve awards. Additionally, the written exam scores will be used as tiebreakers in all Divisions. In the event of a tie on the written test, Showmanship scores will be used as a secondary tie breaker. **Western Grand & Reserve will include showmanship.**



## HORSE REGULATIONS:

1. **Exhibitors must be a Level I rider or above to participate in Gymkhana and Level II rider for jumps and working live cows.**
2. Exhibitors in the SLV Fair Junior Horse Show must be enrolled in a 4-H or FFA Horse Project.
3. The Colorado 4-H Horse Rulebook establishes the regulations and procedures followed in the SLV Fair Junior Horse Show. Refer to this Rulebook for guidelines, the Extension Office has copies available for sale. Any rules listed here take precedence over the Horse Rulebook.
4. An exhibitor in the SLV Fair Junior Horse Show may exhibit up to three horses. In order to be eligible for a Showmanship Award, or High Point Award, the Showmanship horse must be used in at least one other class during any one of the days of the Horse Show.
5. Riders must have and carry a breakaway rope for all classes that require roping. For classes providing a rope to drag a log, the rider should not have a rope tied to their saddle.
6. Each exhibitor must submit Horse ID forms to the Extension Office for all their project horses by May 1, 2024. These forms are to be submitted electronically using the 4HOnline system. All horses entering 4-H horse shows must be declared a project horse by this date. Horse hardship substitutions at 4-H horse shows can only be a horse with a Horse ID on file by May 1, 2024. The SLV Fair Board has the authority to deal with hardship cases.
7. No stallions or wet mares can be shown in the SLV Fair Junior Horse Show.
8. No horse or pony may be exhibited in any class at the SLV Fair Junior Horse Show if it has been administered, in any manner, a forbidden substance as defined by the Colorado 4-H Horse Rulebook.
9. No bareback riding, riding double, or riding with halters will be allowed.
10. Exhibitors, parents, or their agents will not be permitted to approach Judges directly, unless invited to do so at Exhibitors meetings before the Show or Class. All questions or comments must be directed to the Horse Superintendent.
11. Parents, leaders, trainers, or other adults are not allowed to ride an exhibitor's horse at any time while at the SLV Fair Junior Horse Show.
12. Novice (first year) may enter only classes designated: Showmanship, Horsemanship, Hunt Seat Equitation (not to jump), Trail, and Written exam. Novice will be allowed to use either one or two hands on the reins in all their riding classes regardless of the age of the horse or bit used. However, they must use the same method throughout an entire class (switching from one to two handed or vice versa during the class is not allowed) Whether riding one or two handed, exhibitors must use a safe and correct method of holding the reins as described in the Colorado 4-H Horse Show Rulebook (pg. 13&14).
13. The Novice Trail event will include only 4 obstacles.
14. Decisions of the SLV Fair Junior Horse Show Management/ Judges are final.
15. In age groups 11-13 and 14-18, exhibitors may be tested on Level I and II skills in any class.
16. All exhibitors must wear proper attire for their division, as defined by the Colorado 4-H Horse Rulebook. See the 4-H Horse Rulebook for specific required/prohibited gear. ASTM/SEI approved safety helmet with harness securely fastened is required for Gymkhana events. Per the Colorado 4-H Horse Show Rulebook the dress code for the SLV 4-H Horse Show is as follows:
  1. Western (and Gymkhana) Division, Section 90.B: "Western hat, Western or cowboy boots, belt and long-sleeved, full-length shirt (chest and midriff covered) required. Any exhibitor may wear certified protective headgear in any division or class without penalty. A certified equestrian helmet with safety harness fastened in place is required in gymkhana events, activities and practice sessions."
  2. Working Ranch Horse Division, Section 300.E: "Rider shall wear western style clothing that is well fitted and work-like in appearance. Shirts must be long sleeved, full length (chest and midriff covered), long pants, western riding boots, belt, and cowboy hat (or helmet). Optional attire: gloves, ties, chaps, chinks, vest, jackets, raincoat or scarf, safety helmet with harness."
  3. English Division, Section 352.A: "Riders should wear suitable hunt seat attire consisting of a coat of any tweed or melton for hunting (conservative wash jackets in season); breeches or jodhpurs; appropriate boots; and a hunt cap is mandatory. A certified equestrian hunt cap with safety harness fastened in place is required in over fences classes." Or Section 354.A: "Riders should wear suitable attire consisting of a conservative-colored hunt or dressage coat, light colored breeches, and a hunt or dressage cap."
17. In order to be considered eligible for English division classes over fences (Hunter Hack and Hunt Seat Equitation Over Fences) riders must meet the following requirements:

1. For Hunter Hack: Be a Level II English rider,
2. For Hunt Seat Equitation Over Fences: Must be a Level II English rider to compete, no exceptions.

## **Entries**

### **Division: SHOWMANSHIP**

1. Junior (ages 8 to 10, English or Western)
2. Intermediate (ages 11 to 13, English or Western)
3. Senior (ages 14 to 18, English or Western)
4. All Novice

For Round Robin Showmanship information see the Livestock section of this book, [Here](#).

### **Division: ENGLISH EVENTS**

#### **HUNT SEAT EQUITATION NOT TO JUMP**

1. Junior (ages 8 to 10)
2. Intermediate (ages 11 to 13)
3. Senior (ages 14 to 18)
4. All Novice

#### **HUNT SEAT EQUITATION OVER FENCES\***

1. Junior Level II (ages 8 to 10)
2. Intermediate Level II (ages 11 to 13)
3. Senior Level II (ages 14 to 18)

#### **HUNTER HACK\***

1. Junior (ages 8 to 10)
2. Intermediate (ages 11 to 13)
3. Senior (ages 14 to 18)

#### **ENGLISH SHOW HACK**

1. Junior (ages 8 to 10)
2. Intermediate (ages 11 to 13)
3. Senior (ages 14 to 18)

#### **ENGLISH CONTROL**

1. Intermediate (ages 11 to 13)
2. Senior (ages 14 to 18)

**\*Indicates a class over fences, see rule 17 above for additional requirements to enter these classes.**

## **Division: WESTERN EVENTS**

### **HORSEMANSHIP**

1. Junior (ages 8 to 10)
2. Intermediate (ages 11 to 13)
3. Senior (ages 14 to 18)
4. All Novice

### **REINING**

1. Junior (ages 8 to 10)
2. Intermediate (ages 11 to 13)
3. Senior (ages 14 to 18)

### **WESTERN RIDING**

1. Intermediate (ages 11 to 13)
2. Senior (ages 14 to 18)

### **WESTERN TRAIL**

1. Junior (ages 8 to 10)
2. Intermediate (ages 11 to 13)
3. Senior (ages 14 to 18)
4. All Novice

## **Division: WORKING RANCH HORSE**

### **RANCH HORSEMANSHIP**

1. Junior (ages 8 to 10)
2. Intermediate (ages 11 to 13)
3. Senior (ages 14 to 18)

### **RANCH TRAIL**

1. Junior (ages 8 to 10)
2. Intermediate (ages 11 to 13)
3. Senior (ages 14 to 18)

### **INDIVIDUAL COW WORK**

1. Junior (ages 8 to 10)
2. Intermediate (ages 11 to 13)
3. Senior (ages 14 to 18)

## **Division: GYMKHANA**

### **BARREL RACING**

1. Junior (ages 8 to 10)
2. Intermediate (ages 11 to 13)
3. Senior (ages 14 to 18)

### **POLE BENDING**

1. Junior (ages 8 to 10)
2. Intermediate (ages 11 to 13)
3. Senior (ages 14 to 18)

### **KEYHOLE RACE**

1. Junior (ages 8 to 10)
2. Intermediate (ages 11 to 13)
3. Senior (ages 14 to 18)

### **FLAG RACE**

1. Junior (ages 8 to 10)
2. Intermediate (ages 11 to 13)
3. Senior (ages 14 to 18)

### **GOAT TYING**

1. Junior (ages 8 to 10)
2. Intermediate (ages 11 to 13)
3. Senior (ages 14 to 18)

### **BREAK-AWAY ROPING**

1. Junior (ages 8 to 10)
2. Intermediate (ages 11 to 13)
3. Senior (ages 14 to 18)

### **Division: WRITTEN EXAM**

1. Junior (ages 8 to 10)
2. Intermediate (ages 11 to 13)
3. Senior (ages 14 to 18)
4. All Novice

The San Luis Valley Fair Board would like to thank all Sponsors and Volunteers of the 2024 SLV Fair.  
Without your help and support we would not have this great opportunity for our youth!

*We encourage you to support the businesses & individuals that support our 4-H & FFA members!*

[WWW.SLVFAIR.COM](http://WWW.SLVFAIR.COM)

# Thank you once again to our Gold & Silver Sponsors



**Colorado**  
SAN LUIS VALLEY  
POTATOES



DEL NORTE BANK

TRUE · LOCAL · BANK

Consaul  
Farms



MVC



RG BANK



WILBUR-ELLIS®

Gerald & Cory  
Meyers



ciello  
POWERED BY SLVREC

