

2025

July 31 - August 9

SAN LUIS VALLEY FAIR

Celebrating Youth

OUR FUTURE

 **IN ACTION**



TABLE OF CONTENTS

(To jump to a section, click the page number)

2025 FAIR ENTRY INFORMATION	3
SAN LUIS VALLEY FAIR BOARD MEMBERS	3
FAIR SUPERINTENDENTS	3
AREA EXTENSION STAFF	4
COUNTY COMMISSIONERS	4
2024 JUNIOR MARKET LIVESTOCK SALE BUYERS	5
SLV FAIR JUNIOR MARKET LIVESTOCK SALE BUYING POOLS	6
FAIR SPONSORS	7
FAIR POLICIES	11
OPEN CLASS	12
4-H GENERAL & CONSUMER SCIENCE	28
COMMUNITY DINNER	31
GENERAL LIVESTOCK RULES	32
DESIGNATED AREA MAP	33
OPEN LIVESTOCK DIVISION	34
JUNIOR LIVESTOCK DIVISION	35
GENERAL LIVESTOCK RULES & REGULATIONS	35
SLV FAIR SALE RULES & REGULATIONS	39
BEEF	44
SWINE	47
SHEEP	51
MEAT GOATS	53
DAIRY GOATS	56
RABBITS	58
POULTRY	60
DOG	63
HORSE	68



2025 FAIR ENTRY INFORMATION

Fair entries can be completed, beginning June 30, 2025 online at:

<https://sanluisvalley.fairentry.com>

Entry fees can be paid with a check or cash via mail or in person at the Extension office in Monte Vista.

If you cannot complete your entry online, contact the Extension office at 719-852-7381 to discuss alternate entry methods. Open class entries are not subject to the clean-up deposit, and they do not need to pre-register, but are encouraged to do so if able.

2025 FAIR ENTRIES AND PAYMENTS MUST BE POSTMARKED AND/OR RECEIVED NO LATER THAN JULY 11, 2025. ANY ENTRY RECEIVED OR POSTMARKED JULY 12, 2025 THROUGH JULY 18, 2025 WILL BE SUBJECTED TO A \$50 LATE FEE PER EXHIBITOR. NO ENTRIES WILL BE ACCEPTED AFTER THIS DATE. NO EXCEPTIONS.

SAN LUIS VALLEY FAIR BOARD MEMBERS

Alamosa County

Jason Tillman - President
Brandy Myers
Nikol Kelley

Costilla County

Amanda Wakasugi
Ted Cordova
OPEN SEAT

Mineral County

Betsey Strawn
Matt Sliwkowski
OPEN SEAT

Conejos County

Ty Canty - Vice President
Luis Escobedo
Tiffany Valdez

Rio Grande County

Nick Malone, *Treasurer*
Jeff Vance
Nicole Rockey, *Secretary*

Saguache County

OPEN SEAT
OPEN SEAT
OPEN SEAT

Member at Large

Chuck Montague

FAIR SUPERINTENDENTS

Open Class: Brandy Myers

Overall 4-H General & Home Economics: Kallie Shawcroft

Overall Open & 4-H/FFA Livestock: Mark Brown

Beef: Clay Brown

Goats-Meat: Mackenzy Becker

Goats-Dairy: Sam Olsen

Sheep: Gracie Burkhart Porter

Swine: Heather Tillman

Overall Small Animal: Betsey Strawn

Poultry: Christine Davis

Rabbits: Crystal Voss

Dog: Amber Garrison

Overall Horse: Krista Culver

Ranch Horse: Leah Clark

Gymkhana: Jill Francis

AREA EXTENSION STAFF

Director: Larry Brown

Office Manager: Jennifer Norris

4-H Youth Development Agent: Cody Groff

4-H Youth Development Agent: Mollie Wells

4-H Youth Development Agent (Juntos): Carol Gurule

Family & Consumer Science Agent: Janae Naranjo

Office Contact Info

Phone: 719-852-7381

Email: cody.groff@colostate.edu / mollie.wells@colostate.edu

COUNTY COMMISSIONERS

Alamosa County

Lori Laske
Vern Heersink
Arlan Van Ry

Costilla County

Robert Espinoza
Lorrie Quintana
Steven Romero

Rio Grande County

Scott Deacon
Gene Glover
Tyler Ratzlaff

Conejos County

Mitchell Jarvies
Joseph Baroz
Delfino Garcia

Mineral County

Zeke Ward
Scott Lamb
Ramona Weber

Saguache County

Lynne Thompson
Tom McCracken
Liza Marron

THANK YOU!

The San Luis Valley Fair Board acknowledges the fine assistance of all the superintendents, communities, 4-H/FFA members, and their families who have contributed in many ways to making this Fair and past Fairs a success. We take this opportunity to thank all of you as well as our sponsors, and the buyers who have and will again support our SLV Fair Junior Market Livestock Sale. The Fair is an excellent example of communities working together for the good of all.

Thank you to each and every one who contributes to this effort!

2024 JUNIOR MARKET LIVESTOCK SALE BUYERS & ADD-ONS

Many thanks to Brady Stagner for volunteering his services at the Livestock Sale!

We encourage you to support the businesses & individuals that support the 4-H & FFA members.

4Rivers Equipment LLC	Dobbs Enterprises	MPK Showpigs
5 Mile Feeders	Dragondre Real Estate, LLC	Over The Top Fencing
Agro Engineering	Dry Valley Farms	PEF, Inc.
Alamosa State Bank	Edgar Enterprise	Plant Nutrient Solutions
Alcon Construction	Farm Credit of Southern	Ponderosa Partnership
Alpine Vet	Colorado	Porter Realty
Alta Convenience	Farm Fresh Direct	Redlund
Atchley New Mexico, Inc	Freemon's Guest Ranch	Rio Grande Seed & Grain
B&B Farms	Garrison Fence	Rocky Mountain Ag
B&P Crop Care	Good Speed Automotive	San Luis Valley Federal Bank
Beau Temple	Goodwin Real Estate	Sheila Henderson
Beiriger Potato and grain	Hooper Junction	SLV Fair Boosters
Blanca Forestry	Huckleberry Leather Company	SLV Quality Concrete
Booth Ranches	Jackson Feeds	SLV Rural Electric Coop
Brian Spetic	Jim McCullough	Snowshoe Lodge
Burris and son's Bucking Bulls	Joe & Nancy Thomas	Steffens Quality Plumbing &
Cattle Mountain Ranch	Johnson Ranch	Heating
Center Kiwanis	Keenan Anderson	Sunset Grill
Chris and Roxann Sittler	La Junta Livestock	TC Ranch
Christy & Richard Acheson	Lenco West	The Polished Edge
Cinch Jeans	Leslie Ruybal	Town & Country
Cole Ranch	Linda Warsh	Trinchera Ranch
Colorado Realty Land CO	Marsh Tim Gallagher	US Tractor
Comfort Zone Insulation	McBarlett Holdings LLC	Valley Lumber
Conejos County Rotary	McClave State Bank	Wall Smith Bateman
Consaul Farms	Mike Mitchell Farms	Walter & Emma Roybal
Cooley & Sons Excavating	MIndy Shirley	White Rock Specialties
Country Kids Daycare	Mineral County	Wilbur-Ellis
Cultivating Hearts	Monte Vista Coop	WorldFuel Services/ Alta Fuels
Dale Becker	Monte Vista Livestock Auction	Worley Family Farms
Darin Bold Agency	Mosby Farms	
DD Thrashing	Mosca Pit Stop	

IN THE EVENT THAT WE OMITTED YOUR NAME FROM OUR BUYERS LIST, WE EXTEND OUR APOLOGIES AND ASK THAT YOU PLEASE LET US
KNOW. THANK YOU.

SLV FAIR JUNIOR MARKET LIVESTOCK SALE BUYING POOLS

Do you want to support exhibitors at the Livestock Sale but don't want to purchase a whole animal alone?

Partnering with a neighbor or contacting one of the following buying pools is a great way to support the Sale.

Kiwanis Club of Center

The Kiwanis Club of Center has as one of its major projects, the pooling of community funds for the purpose of maintaining a floor on the price of the livestock sold at the SLV 4-H FFA Livestock Auction. This floor guarantees that all youth have a fair return for their efforts of livestock production projects and are able to bank some money. The youth use their money to pay feed and other expenses, and then set some aside for the next years project or for college expenses.

"We do not want to purchase all the animals but we want to see all the youth earn a fair return and to show a profit for their labors."

Junior Livestock Sale Boosters

The Jr. Livestock Sale Boosters has a mission of improving the SLV Fair Sale by having an unbiased approach in upholding the sale prices of the market animals and improving the profitability of the market animal projects. We accomplish this by actively bidding on and purchasing animal projects in the SLV Fair Sale as well as providing add-on money for projects that appear to have sold below market, based on conditions in sale orders, placing and animal species.

Conejos County Rotary

PO Box 145, La Jara, CO 81140

SHOW YOUR APPRECIATION!

We encourage you to support the business and individuals that support our 4-H and FFA members! Take time to not only say thank you to our sponsors and buyers, but also support them as a customer. Our fair would not be possible without their contributions.

FAIR SPONSORS

COUNTY SPONSORS

Alamosa County
Conejos County
Costilla County

Mineral County
Rio Grande County
Saguache County

GOLD SPONSORS

Monte Vista COOP
Mountain Skillz

Myers Farms, LLC
RG Bank

RPE

SILVER SPONSORS

Bountiful Meats
Sanford Processing / Valley
Meat Co.

SLV REC/CIELLO
The Sign Guys and Gals

BRONZE SPONSORS

A&B Auction Services, LLC
Alcon Construction

Rustic Rentals
SLV Federal

FRIENDS OF SLV FAIR

AgCheck Compliance
Aspen Produce
Colorado Cattleman's
Agricultural Land Trust

Colorado Gourmet
Davis Farms
L&M Auto

Monte Canvas &
Upholstery
Myers Brothers Trucking
Price Farms Seed

IN-KIND DONATIONS

Cooley and Sons
Excavating

Gobins
MV COOP

Sorum Tractor
Wilshaw's Lumber

BELT BUCKLE SPONSORS

7L Diamond Ranch
Agro Engineering
Alamosa State Bank
Alicia Berlinger
American Family Insurance
Bar Two Bar Ranch
Brady Farms
Brandon & Michelle Vannoy
Broken Arrow Ranch & Land
Company
Cary Cattle Services
Cattleman's Association
Chuck & Val Finnegan
Cimmaron Muniz Handyman
Colorado Realty & Land
Comfort Zone
Cooley & Sons Excavating
Coombs Farms
Creede & Mineral County Chamber
Curtis Schneider**
Dobbs Enterprises
Dry Valley Farms
EXIT Realty
Flintham Hills Ranch

Gary & Jody Seger
Hi Valley Ranch
Hogues Glass
Huckleberry Leather
In Memory of Logan Smith
J Kopasz Construction
Johnson Ranches, Inc.
Jubilee Farms
Justin & Kim Cordova
Larry & Ruthie Brown
Leon Bolt
Linder Feeds: Jason & Heather
Tillman
Malouff Show Goats
McB's Laundromat in South Fork
Metz Potato
Mosby Farms
My Sister's Pantry
Nissen Farms, LLC
Porter Realty, Inc.**
Proximity Malt, LLC
Rabbit Supporters
Reynolds Tree Service
Rio Grand Dairy

Rio West Boer Goats
Rob & Sarah Stoeber
Robert Holman
Rob & Bonnie Bolt
S5 Show Stock
San Acacio Seed
Sarah Stoeber
Schneider Farms
Schultz Realty
Sims Trucking
SLV Scholar Support **
SLV Quality Concrete **
Smalley Angus
Sunset Grill, LLC
Superior Staining: Cade & Ashley
Huffaker
Tiffany & Atsa Valdez **
Trinchera Ranch
Valley Floors, LLC
Valley Smiles
Van Tresse Farms **
Wiescamp, LLC
Wookey Logistics, Inc.

**Multiple Buckle Sponsors

INDOOR SPONSORS

AgCheck Compliance Services, LLC
Aspen Produce, LLC
Colorado Cattlemen's Agricultural
Land Trust
Colorado Gourmet

Davis Farms
L&M Auto
Monte Canvas & Upholstery
Myers Brothers Truck & Tractor,
Inc.

Price Farms Seed, LLC
Ski Hi Stampede

Thank You for Your Sponsorship!

BRAND SPONSORS

(Also see the Brand Display in McMullen Building)



Christensen Farm



Francis & Sons, Inc.



Hi Valley Ranch



Bear Creek Ranch



Wintz Ranch



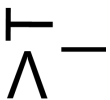
Papa Whiskey Land & Cattle



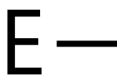
Haywood Ranch - Buss & Davie Families



Mike Smotherman



Beau & Kim Temple



EQC



Andy Dickey



Off Ranches



Mark Holman



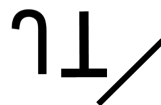
Dick & Jean Ramstetter



Karla Shriver



OxCart Ranch



Rizzi Farm & Ranch



Steve & Donna Burris



Sinclair Farms



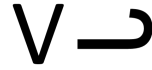
Mosby Farms



Daniel Davis



Erin Nissen



Virgil, Sherri & Joshua Valdez



Faith Cattle Co. LLC



WH Lester Ranches



Feed & Stuff Livestock Minerals



Diamond D Ranch LLC



Rafter P Ranch



LAZY EA Ranch, LLC

Aaron and Lori Laske
Johnson Ranches

SAN LUIS VALLEY FAIR POLICIES

1. The San Luis Valley Fair is an educational activity created to evaluate each participant's progress and accomplishments through interview judging, showmanship, preparation of educational displays, demonstrations, etc. The Fair is also a venue for promoting new recommendations and practices in agriculture, home economics, natural resources and youth programs.
2. The San Luis Valley Fair Board, composed of appointed representatives from Alamosa, Conejos, Costilla, Mineral, Rio Grande, and Saguache Counties, coordinate the Fair. The members of the San Luis Valley Fair Board determine policies, approve expenditures, develop a Fair program, and provide awards for exhibitors. The Fair is held in cooperation with the local Colorado State University Extension 4-H program, and San Luis Valley FFA programs.
3. A 4-H/FFA exhibitor or other individual may use a "protest" to review enforcement of the rules, regulations, policies, and judging procedures printed in this book. All protests shall be considered by a quorum of the San Luis Valley Fair Board. Protests must be in writing and accompanied by a fee of \$150 in cash or certified check. The protest shall plainly state the cause of the protest and shall be delivered to a San Luis Valley Fair Board member no later than 8 (eight) hours after occurrence of the alleged incident. Compliance with this policy is mandatory prior to seeking review. Judging will not be interrupted by a protest. The fee imposed shall be refunded if the matter is resolved in favor of the person bringing the protest. The decision of the Fair Board is final.
4. All reimbursements in connection with the 2025 San Luis Valley Fair must be presented to the San Luis Valley Fair Board before October 10, 2025, or will be void.
5. The San Luis Valley Fair Board and staff will use reasonable diligence to ensure safety of exhibits after their arrival and placement, but in no case will they be responsible for any loss or damage done to, occasioned by, or arising from any animal or article on exhibit. The exhibitors shall indemnify the San Luis Valley Fair Board and staff of all legal or other proceedings in regard thereto. The placing of any exhibit on the show grounds by any and all exhibitors shall signify the exhibitor's agreement to abide by this policy.
6. The San Luis Valley Fair does not discriminate on the basis of race, color, sex, religion, age, disability, sexual preference, veteran or marital status, or national origin in its policies or activities.
7. The mention of any company or association is made with the understanding that no discrimination is intended and no endorsement implied.
8. Possession of alcohol, illegal substances, firearms, or illegal weapons is forbidden during Fair activities. Any violation of this policy shall be grounds for expulsion from the Fair and ejection from the premises.
9. The San Luis Valley Fair Board has the final and absolute opportunity to determine if any person has violated any of the rules, regulations, and policies printed in this SLV Fair Book and to settle and determine all matters, questions or differences arising out of, connected with, or incident to a violation of these rules, regulations, and policies. Any person who violates any of these rules, regulations, or policies may be subject to forfeiture of all privileges, awards, and premiums and to such other penalty deemed appropriate by the Fair Board.

2025 FAIR ENTRIES AND PAYMENTS MUST BE POSTMARKED AND/OR RECEIVED NO LATER THAN JULY 11, 2025. ANY ENTRY RECEIVED OR POSTMARKED JULY 12, 2025 THROUGH JULY 18, 2025 WILL BE SUBJECTED TO A \$50 LATE FEE PER EXHIBITOR. NO ENTRIES WILL BE ACCEPTED AFTER THIS DATE. NO EXCEPTIONS.

OPEN CLASS

Superintendent: Brandy Myers (719) 849-1522

Entry Fee: no entry fee for this contest

General Rules and Regulations

1. The San Luis Valley Fair Board will use all care possible to ensure the safety of the entries; however, under NO CIRCUMSTANCES will they be responsible of loss, or damage done to, occasioned by, or arising from any article on exhibition.
2. Each exhibit must be entered under the name of the person who made it.
3. All exhibits must have been completed since August 1st, 2024.
4. Exhibits that do not follow class description will be disqualified. Ribbons will be awarded in all classes, if merited.
5. New classes may be created on entry day only when the following condition is met: When there are two or more entries which do not logically fit into established classes.
6. County Fair classes are not necessarily descriptive of or included as classes for entry at Colorado State Fair. See www.coloradostatefair.com for entry rules for State Fair.
7. Open classes are categories that all community members are invited to take part in.
8. Items left after pickup time will be available for pick up at the Extension Office. (If items are not picked up within 30 days after checkout, they will be given to charity.)

All Open Class Departments have six age categories as follows:

1. Mentor and Me: 3-7
2. Junior 8-12
3. Teen 13-18
4. Adult: 19-60
5. Senior 65+
6. Pro – Anyone earning over \$300 in the division entered.

BEST OF SHOW AWARDS

\$25 Best of Show Award

At the judge's discretion this will be awarded in each age division for Mentor and Me, Junior, Teen, Adult and Senior if more than 3 people's exhibits are judged per division.

PREMIUMS

Premiums will be awarded based on ribbons received. Premiums will only be awarded for blue, red, and white. The premium amounts are as follows:

Blues \$3.00

Reds \$2.00

Whites \$1.00

***These premiums may be subject to change by the San Luis Valley Fair Board.

Department 1 – Vegetables and Crops

Vegetables and Crops Rules: Exhibits must be made by the exhibitor and not previously entered at the SLV County Fair. All Exhibitors must furnish a paper plate HEAVY ENOUGH to hold the vegetables or fruits being displayed firmly. Each crop display must be in a zip-lock type bag. Each exhibit must be of the proper size, number or weight as listed for the various classes, or risk being disqualified. Please bring insect free produce. Exhibitors are allowed 3 entries per class.

Vegetable Classes

1. Head Lettuce (Such as Iceberg)
2. 5 Leaves of Leaf Lettuce
3. 3 Head Kohlrabi
4. 1 Head Kale
5. Greens, 1 lb
6. 10 Peas
7. 1 Head Cauliflower
8. 1 Full Head Broccoli
9. Swiss Chard, ¼ lb
10. 6 Carrots
11. 3 Turnips
12. 1 Eggplant
13. 4 Hot Peppers
14. 3 Sweet Peppers
15. 4 Pickling Cucumbers
16. 4 Slicing Cucumbers
17. 1 Head Cabbage
18. 1 Pie or Field Pumpkin
19. 3 Ears Sweet Corn, shucked
20. 1 Summer Squash – Zucchini- Green – Gold
21. 1 Winter Squash
22. 2 Onions
23. Heads of Garlic trimmed to 2” or nicely braided
24. 6 Green Onions, tops trimmed to 6”
25. 6 Green Snap Beans
26. 6 Wax Beans
27. 6 Purple Beans
28. 6 Pole Beans
29. 6 Radishes
30. 5 Beets, trimmed to 3 – 4”
31. 3 Ripe Tomatoes, stems on
32. 6 Ripe Cherry Tomatoes, stems on
33. 3 Green Tomatoes, stems on
34. 4 Red Potatoes
35. 4 White Potatoes
36. 4 Yellow Potatoes
37. Other Vegetables

Fruit Classes

38. 6 Strawberries
39. 6 Raspberries
40. 6 Cherries
41. Other Berries
42. 4 Winter Apples
43. 8 Crab Apples
44. 4 Stalks of Rhubarb
45. Other Fruits

Novelty Vegetables Classes

46. Giant Zucchini
47. Giant Vegetables, other
48. Novelty Formed Vegetables
49. Novelty Gourds, to fit on 8” plate
50. Vegetable Display (6 different vegetables, creatively and attractively displayed)

Fresh Herb Classes

Fresh Herbs – nice stem or sprig, bagged & on plates, not in water

51. Basil
52. Dill, not yet seeded
53. Oregano
54. Cilantro
55. Ginger Root
56. Parsley
57. Chives
58. Rosemary
59. Mint
60. Thyme Other

Field Crops

61. All Varieties

Department 2 – Flowers & Plants

Flowers and Plants Rules: Exhibits must be made by the exhibitor and not previously entered at the SLV County Fair. Items Entries identified as a noxious weed will be disqualified and destroyed. Entries will be disqualified if they have insects or do not contain the number of blooms or stems designated in each class. Flowers should be exhibited with blooms of uniform size, shape and color, straight stems and any natural foliage. Exhibitors must furnish their own containers. The blooms or stem count is listed next to each listing.

Cut Flower Classes

- | | |
|------------------------------------|--|
| 1. 1 Aster, any color | 20. 4 Nasturtium |
| 2. 2 Coneflowers, any color | 21. 6 Pansies |
| 3. 2 Bachelor Buttons | 22. 4 Petunias, single blossom |
| 4. 3 Bells of Ireland | 23. 4 Petunias, large ruffled blossom |
| 5. 5 Black-eyed Susan's | 24. 4 Petunias, double ruffled blossom |
| 6. 4 Calendula | 25. 4 Petunias, mixed blossom |
| 7. 3 Clematis | 26. Phlox |
| 8. Cosmos, 3 sprays | 27. 4 Pinks |
| 9. Columbine | 28. 4 Poppies |
| 10. 1 Dahlia, large (over 8") | 29. 1 Rose |
| 11. 4 Dahlia, decorative (4" x 8") | 30. 1 Rose Bud |
| 12. 4 Dahlia, miniature (up to 4") | 31. 4 Snapdragons |
| 13. 4 Daisies, Gloriosa | 32. 4 Sweet Peas, any one color |
| 14. 4 Daisies, any Shasta | 33. 4 Sweet Peas, mixed colors |
| 15. 4 Daisies, any other | 34. 6 Violas |
| 16. Gladiolus, 1 spike | 35. 3 Zinnia |
| 17. Daylilies, 1 stem | 36. Domesticated Sunflower |
| 18. True Lily, single | 37. Lupin, 1 stem |
| 19. 3 Marigold | 38. Miscellaneous |

Potted Plant Classes

- | | |
|--------------------------|-----------------------------|
| 39. Blooming with blooms | 44. Vining |
| 40. Cacti | 45. Vining with blooms |
| 41. Succulent | 46. African Violet in Bloom |
| 42. Colored Foliage | 47. Any Other Potted Plants |
| 43. Green Foliage | |

Flower Arrangement Classes

****Home Grown Flowers****

- 48. In Oasis
- 49. Dried
- 50. Bouquet
- 51. All Other Floral Arrangements

****Can use commercial flowers****

- 52. In Oasis
- 53. Dried
- 54. Bouquet
- 55. All Other Floral Arrangements

Fairy Gardens

- | | |
|---------------|-----------------------------|
| 56. Theme | 60. Patio |
| 57. Herbal | 61. Flowering |
| 58. Succulent | 62. Artistic |
| 59. Cactus | 63. All Other Fairy Gardens |

Department 3 - Baked Goods, Non-Cake or Pastry

Baked Good Rules: Exhibits must be made by the exhibitor and not previously entered at the SLV County Fair. Bring food items on sturdy paper plates and/or covered heavy cardboard in a zipper-locked bag for display of food exhibits when possible. See each category for more specific display instructions. Uncut pies must be in disposable pie pan and uncut. Cupcake liners are ONLY allowed on cupcakes, not muffins. Breads must be exhibited as a whole loaf. Baked goods will be judged on texture (35%), flavor (35%), and appearance (30%). Breads must be exhibited as a WHOLE LOAF.

Quick Breads (no yeast, whole loaf or plate of 4)

1. Baking Powder Biscuits (4)
2. Zucchini Bread (loaf)
3. Zucchini Muffins (4)
4. Banana Bread (loaf)
5. Banana Muffins (4)
6. Pumpkin Bread (loaf)
7. Pumpkin Muffins (4)
8. Other Fruit Bread (loaf)
9. Other Fruit Muffins (4)
10. Coffee Cake (loaf)
11. Corn Bread (loaf or 4 muffins, no wrapper)
12. Tortillas
13. Scones – any flavor (4)
14. All Other

Sourdough (whole loaf or plate of 4 where applicable)

15. Sour bread (loaf)
16. Sour cakes (4)
17. Sour cookies (4)
18. Sour doughnuts (4)
19. Sour biscuits (4)
20. All other sourdough

Yeast (whole loaf or plate of 4 where applicable)

21. White Bread (loaf)
22. Whole Wheat Bread (loaf)
23. Rye Bread (loaf)
24. White Dinner Rolls (4)
25. Whole Wheat Dinner Rolls (4)
26. Raised Doughnuts (4)
27. Cinnamon Rolls (4)
28. Croutons (4)
29. All Other Yeast

Bread Machine Made (whole loaf)

30. White Yeast
31. Whole Wheat Yeast
32. Other Bread Machine

Candies (6 pieces)

33. Brittles
34. Divinity
35. Fudge
36. Un-dipped Mints
37. Dipped Mints
38. Other Dipped Candies
39. Popcorn Balls/Flavored Popcorn
40. All Other Candies

Cookies (6 cookies)

41. Oatmeal
42. Brownies
43. Iced Brownies
44. Chocolate Chip Drop
45. Chocolate Chip Bar
46. Sugar Cookie Drop
47. Sugar Cookie Iced
48. Peanut Butter Drop
49. Peanut Butter Drop
50. No Bake Cookies
51. All Other Cookies

Department 4 - Baked Goods, Cakes & Pastries

Cake & Pastry Rules: Exhibits must be made by the exhibitor and not previously entered at the SLV County Fair. Cakes should be placed on a very firm, disposable surface, cut parallel to the shape of the cake and must be 1.5 inches on each side from the base of the border, not the cake. The surface should be covered. Freezer paper is not advised as it absorbs grease. The cake board must be covered with a food safe material, such as aluminum foil. If you use a decorative or gift wrap paper or fabric, it must be covered in food quality plastic wrap. Cakes may be frosted or unfrosted. Only one 8 inch or 9-inch layer of a non-decorated cake should be exhibited. Cakes will be scored on texture (35%), flavor (35%) and appearance (30%).

Decorated Cake Icing may be applied to a non-edible form in all classes with the exception of edible decorated cakes, which must be edible. Decorated cakes WILL NOT be tasted.

- | | |
|---------------------|-----------------------------|
| 1. Any Edible | 5. Cupcakes (4 total) |
| 2. Birthday | 6. All Other Decorated Cake |
| 3. Special Occasion | |
| 4. Wedding | |

Scratch Cake

- | | |
|----------------|---|
| 7. White | 14. Sponge |
| 8. Yellow | 15. Cheese Cake – baked |
| 9. Chocolate | 16. Cheese Cake – unbaked (must be entered morning of judging due to lack of refrigeration) |
| 10. Spice | 17. Cupcakes |
| 11. Angel Food | 18. All Other from Scratch Cake |
| 12. Pound | |
| 13. Butter | |

Packaged Mix Cake (made from a prepackaged mix)

- 19. Fruit
- 20. Spice
- 21. Cupcakes
- 22. All Other Mix Cakes

Pastry Pies must be WHOLE in a disposable pan and UNCUT. Classes will be developed to reflect entries.

- | | |
|---|------------------------|
| 23. Fruit Pie | 28. Maple Bars |
| 24. Cream Pie (must be entered morning of judging due to lack of refrigeration) | 29. Popovers |
| 25. Walnut or Pecan Pie | 30. Fruit Tarts |
| 26. Meringue | 31. Danish |
| 27. Cream Puffs | 32. Cobbler |
| | 33. All Other Pastries |

Department 5 - In the Cupboards

In the Cupboards Rules: Exhibits must be made by the exhibitor and not previously entered at the SLV County Fair. Please see individual divisions for rules.

Canned Goods

1. All canned and jellied products must include the following information on the label: name of product – method of preparation – method of processing and pounds of pressure used if food was pressure canned - altitude at which processing was done – date of processing. The recipe is strongly recommended to be included, but not mandatory. REMEMBER TO ADD ALTITUDE ADJUSTMENT TIME TO RECIPE YOU ARE PREPARING.
Example
Product Pitted cherries
Method: Raw pack (water bath or pressure canned)
Time: 28 minutes (pints)
Altitude: 7,600 feet
Date: September 2024
2. Jellied products and other canned products must be displayed in the U.S. standard jar (i.e. Ball or Kerr). Two-piece matching lids must be used.
3. Acceptable canning methods include pressure canned or hot water bath. It may be necessary to open home canned food entries to inspect for judging purposes. Judges will use their own discretion as to whether or not they will open and taste canned products. Directions for different methods are available from the SLV County Extension Office and local libraries. Products with paraffin (wax) seals will not be accepted.
4. Including the recipe is beneficial
5. Head space (the unfilled jar space above the food and below its lid) should be ¼ inch for jams and jellies; ½ inch for fruit, pickles and tomatoes processed in hot water bath; and 1 to 1 ¼ inch for low acid foods, vegetables, meats, etc. processed in a pressure canner.
6. Judging for fruits, vegetables, meat, fish and soups is based on appearance (50%), pack (40%), and container and labeling (10%).

Water Bath Fruits & Juices

- | | |
|---------------|-----------------------------------|
| 1. Apples | 9. Tomatoes |
| 2. Cherries | 10. Chutney (include ingredients) |
| 3. Peaches | 11. Syrup |
| 4. Pears | 12. Any Other Fruit or Berries |
| 5. Plums | 13. Apple Juice Tomato Juice |
| 6. Rhubarb | 14. Tomato Juice |
| 7. Apples | 15. Any Other Juice |
| 8. Applesauce | |

Pressure Canned Vegetables & Meats

- | | |
|------------------------|--------------------------------------|
| 16. Wax Beans | 22. Cubed Squash or Pumpkin |
| 17. Green Beans | 23. Mince Meat (include ingredients) |
| 18. Tomatoes, Stewed | 24. Any Other Vegetable |
| 19. Beets | 25. Fish |
| 20. Corn (in pint jar) | 26. Chicken |
| 21. Carrots | 27. Any Other Meat |

Water Bath Pickled Foods

- 28. Sweet Cucumber Pickles
- 29. Any Other Sweet Pickled Product
- 30. Dill Cucumber Pickles
- 31. Any Other Dilled Product
- 32. Bread and Butter Pickled Product
- 33. Any Other Bread & Butter Pickled Product

Water Bath Jelly

- 39. Chokecherry Jelly
- 40. Apple Jelly
- 41. Grape Jelly
- 42. Plum Jelly

Water Bath Jam Classes

- 47. Peach Jam
 - 48. Raspberry Jam
 - 49. Strawberry Jam
 - 50. Apricot Jam
 - 51. Plum Jam
 - 52. Any Two or More Fruit Mix Jam
 - 53. Any Other Jam
 - 54. Healthy Recipes (include recipe)
- Water Bath Miscellaneous

- 34. Pickled Cucumber Relish (include ingredients)
- 35. Any Other Pickled Relish (include ingredients)
- 36. Any Other Pickled Product
- 37. Salsa (include ingredients)
- 38. Any Other Kind of Sauce (include ingredients)

- 43. Crab Apple Jelly
- 44. Any Two or More Fruit Mix Jelly
- 45. Any Other Jelly
- 46. Healthy Recipes (include recipe)

- 55. Strawberry Preserves
- 56. Peach Preserves
- 57. Any Two or More Fruit Mix Preserves
- 58. Any Other Preserves
- 59. Apple Butter
- 60. Any Other Fruit Butter
- 61. Any Marmalade (include ingredients)
- 62. Any Conserve (include ingredients)
- 63. Healthy Recipes (include ingredients)

Department 6 - Dried Products

Dried Product Rules: Exhibits must be made by the exhibitor and not previously entered at the SLV County Fair. Please include ½ cup of dried product, unless otherwise noted. Dried products must be in a moisture vapor-proof container or bag. Labels on dried foods must indicate the name of the product, any pretreatment, additional ingredients, method of drying (oven, dehydrator, solar, drying time and date dried. Tasting of dried products will be at the judge's discretion.

Example of Label

Product: Apricots with Ascorbic Acid

Method: Dehydrator Dried

Time: 8 hours

Date: September 2025

Fruits

- | | |
|-------------|----------------------------|
| 1. Apples | 5. Plums |
| 2. Apricots | 6. Grapes/Raisins |
| 3. Cherries | 7. Fruit Leathers (1 roll) |
| 4. Pears | 8. All Other Dried Fruits |

Vegetables

- | | |
|-----------------------|--------------------------|
| 9. Carrots | 14. Onions |
| 10. Celery | 15. Peppers |
| 11. Corn | 16. Squash/Zucchini |
| 12. Mixed Vegetables | 17. All Other Vegetables |
| 13. Frozen Vegetables | |

Other Dried Products

- | | |
|----------------------|------------------------------|
| 18. Herbs | 20. Noodles (1 cup) |
| 19. Jerky (4 strips) | 21. All Other Dried Products |

Department 7 - Bath Products

Bath product rules: Exhibits must be made by the exhibitor and not previously entered at the SLV County Fair. Bath products should contain one appropriately labeled bar, bottle or container per entry.

Homemade Soap

- | | |
|----------------------|----------------------------|
| 1. Made from a kit | 3. All Other Homemade Soap |
| 2. Made from scratch | |

Homemade Lotion

- | | |
|----------------------|------------------------------|
| 4. Made from kit | 7. Serum |
| 5. Made from scratch | 8. Lip Balm |
| 6. Salve | 9. All Other Homemade Lotion |

Homemade Aromatherapy

- | | |
|-----------|----------------------------|
| 10. Oils | 12. All Other Aromatherapy |
| 11. Salts | |

Department 8 – Needlework & Sewing

Sewing Rules: Items must be clean and prepared for judging, if needed. Exhibits must be made by the exhibitor and not previously entered at the SLV Fair. Judging is based on workmanship, proper fabric choice, choice of pattern, and general appearance.

Sewing Classes

- | | |
|-----------------|------------------------------|
| 1. Dress | 10. Vest |
| 2. Jacket | 11. Slacks |
| 3. Jumper | 12. Garment, made from a kit |
| 4. Suit | 13. Coat |
| 5. Blouse | 14. Pantsuit |
| 6. Sleepwear | 15. Aprons |
| 7. Shirt | 16. Tote Bag |
| 8. Infants Wear | 17. Cosmetic Bag |
| 9. Skirt | 18. All Other Sewing |

Decorative Stitching – Embroidery & Needlepoint

- | | |
|--|---|
| 19. Hand Pillow Cases (1 pair) | 27. Machine Pillow Cases (1 pair) |
| 20. Hand Tea Towels (set of 2) | 28. Machine Tea Towels (Set of 2) |
| 21. Hand Tablecloth or Luncheon Cloth | 29. Machine Tablecloth or Luncheon Cloth |
| 22. Hand Counted X-stitch Picture | 30. Machine Scarves, Place Mats, or Napkins |
| 23. Hand counted X-stitch, other | 31. Miscellaneous Machine Embroidery |
| 24. Hand Scarves, Place Mats, or Napkins | 32. Needlepoint Pillow |
| 25. Hand Candle Wicking | 33. Needlepoint Picture |
| 26. Miscellaneous Hand Embroidery | 34. Miscellaneous Needlepoint |

Crocheted

- | | |
|------------------------------|---------------------------|
| 35. Hot Pads and Pot Holders | 41. Scarf |
| 36. Afghan | 42. Hat |
| 37. Sweater | 43. Toy |
| 38. Pillow | 44. Doll |
| 39. Doily | 45. Miscellaneous Crochet |
| 40. Cape or Shawl | |

Knitted

- | | |
|----------------------------|--------------------|
| 46. Sweater | 53. Tatted, other |
| 47. Afghan | 54. Felting |
| 48. Scarf | 55. Toy, Fabric |
| 49. Toy | 56. Plastic Canvas |
| 50. Baby | 57. Weaving |
| 51. Hats | 58. Hooked Rugs |
| 52. Miscellaneous Knitting | 59. Miscellaneous |
| Miscellaneous Classes | |

Department 9 - Quilting

Quilting Rules: Items must be clean and prepared for judging, if needed. Exhibits must be made by the exhibitor and not previously entered at the SLV Fair. Judging is based on workmanship, proper fabric choice, choice of pattern, and general appearance.

Bed Size Quilt

- | | |
|----------------------------|---|
| 1. Pieced, hand quilted | 3. Pieced by Individual, professional quilted |
| 2. Pieced, machine quilted | |

Lap Quilt

- | | |
|----------------------------|---|
| 4. Pieced, hand quilted | 6. Pieced by Individual, professional quilted |
| 5. Pieced, machine quilted | |

Baby Quilt

- | | |
|----------------------------|---|
| 7. Pieced, hand quilted | 9. Pieced by Individual, professional quilted |
| 8. Pieced, machine quilted | |

Wall Hanging

- | | |
|-----------------------------|--|
| 10. Pieced, hand quilted | 12. Pieced by Individual, professional quilted |
| 11. Pieced, machine quilted | |

Table Runner & Tops

- | | |
|-----------------------------|--|
| 13. Pieced, hand quilted | 15. Pieced by Individual, professional quilted |
| 14. Pieced, machine quilted | |

Appliquéd – Hand

- | | |
|-----------------------------|--|
| 16. Pieced, hand quilted | 18. Pieced by Individual, professional quilted |
| 17. Pieced, machine quilted | |

Appliquéd – Machine

- | | |
|-----------------------------|--|
| 19. Pieced, hand quilted | 21. Pieced by Individual, professional quilted |
| 20. Pieced, machine quilted | |

Embroidered – Hand

- | | |
|-----------------------------|--|
| 22. Pieced, hand quilted | 24. Pieced by Individual, professional quilted |
| 23. Pieced, machine quilted | |

Embroidered – Machine

- | | |
|-----------------------------|--|
| 25. Pieced, hand quilted | 27. Pieced by Individual, professional quilted |
| 26. Pieced, machine quilted | |

Miscellaneous Quilts

- | | |
|------------------------|----------------------------|
| 28. Comforter, tied | 31. Miscellaneous Quilting |
| 29. Foundation Piecing | 32. Panel Quilt |
| 30. Quilt Top | 33. Rag Quilt |

Department 10 - Crafts and Hobbies

Crafts and Hobbies Rules: Items must be clean for judging. Exhibits must be made by the exhibitor and not previously entered at the SLV County Fair.

Legos and Construction Blocks

- 2. Kit - Moving
- 3. Kit – Non-Moving
- 4. Kit – With Improvements
- 5. Original Scene
- 6. Original House
- 7. Original, airplane – car – vehicle
- 8. Original Designs, other
- 9. Knex
- 10. Tinker Toys
- 11. Erector Sets
- 12. All Other Legos and Construction Blocks

Recycled or Ecology

- 13. Popsicle Sticks
- 14. Cardboard
- 15. Pet Rocks
- 16. Pine Cones
- 17. Tin-Can Art
- 18. Glass Bottles
- 19. Glass with Fabric
- 20. Recycled Jewelry
- 21. Recycled Fabric
- 22. Clothes
- 23. Entire Doll
- 24. Bird Houses
- 25. All Other Recycled Or Ecology Exhibits

Digital Cutting Machine

- 26. Clothing vinyl
- 27. Clothing, printed
- 28. Tumbler
- 29. Home décor
- 30. Other

All Hobbies & Craft Classes

- 31. Beadwork
- 32. Jewelry
- 33. Yarn Work
- 34. Macramé
- 35. Handmade Furniture
- 36. Textile Painting
- 37. Stamped or Tooled Leather Work
- 38. Sewn Leather Work
- 39. Braiding
- 40. Ceramics, pre-formed
- 41. Wall Plaque
- 42. Dolls
- 43. Woodwork, cut & finished
- 44. Wood Carving, rough finished
- 45. Wood Carving, sanded
- 46. Wood Burning
- 47. Block Printing
- 48. Leaded Glass, 2 Dimensional
- 49. Leaded Glass, 3 dimensional
- 50. Etched Glass
- 51. Sandblasted Glass
- 52. Artificial Flowers
- 53. Collections
- 54. Bone Work
- 55. Centerpiece Arrangement
- 56. Models
- 57. Rockets
- 58. Hand-painted China
- 59. Basket Weaving
- 60. Basketry
- 61. Wreaths
- 62. Holiday Decorations
- 63. Greeting Cards
- 64. Nature Made Crafts
- 65. Tole Painting
- 66. Soft Sculptures
- 67. Decorated Clothing, non-stitched
- 68. Calligraphy
- 69. Hand Spun Wool
- 70. Metal Parts Sculpture
- 71. Metal Art Welded
- 72. Metal Art Forged

- 73. Metal Art Cut
- 74. Paper Art
- 75. Scrapbooks
- 76. Restoration
- 77. Yard Art
- 78. Recycled Refurbished Craft
- 79. Playdough

- 80. Mosaics
- 81. Bird House
- 82. Fridge magnet
- 83. Paint by Number
- 84. Quill Work
- 85. 3D Printing
- 86. Any Other

Department 11 – Art

Art Rules: Exhibits must be made by the exhibitor and not previously entered at the SLV County Fair. The date should be identifiable on art work (corner of art work or on the back). Artwork prepared for hanging or display is appreciated, matted or framed if possible.

Acrylic

- | | |
|---------------|-------------|
| 1. Landscape | 4. Animal |
| 2. Still Life | 5. Floral |
| 3. Portrait | 6. Abstract |

Oils

- | | |
|---------------|--------------|
| 7. Landscape | 10. Animal |
| 8. Still Life | 11. Floral |
| 9. Portrait | 12. Abstract |

Watercolor Classes

- | | |
|----------------|--------------|
| 13. Landscape | 16. Animal |
| 14. Still Life | 17. Floral |
| 15. Portrait | 18. Abstract |

Pastels

- | | |
|----------------|--------------|
| 19. Landscape | 22. Animal |
| 20. Still Life | 23. Floral |
| 21. Portrait | 24. Abstract |

Pencil, Pen & Ink Classes

- | | |
|----------------|--------------|
| 25. Landscape | 28. Animal |
| 26. Still Life | 29. Floral |
| 27. Portrait | 30. Abstract |

Crayons

- | | |
|----------------|--------------|
| 31. Landscape | 34. Animal |
| 32. Still Life | 35. Floral |
| 33. Portrait | 36. Abstract |

Markers

- | | |
|----------------|---------------|
| 37. Landscape | 41. Floral |
| 38. Still Life | 42. Abstract |
| 39. Portrait | Mixed Media |
| 40. Animal | 43. Landscape |

- 44. Still Life
- 45. Portrait
- 46. Animal

Scratchboard

- 49. Landscape
- 50. Still Life
- 51. Portrait

Computer Art

- 55. Landscape
- 56. Still Life
- 57. Portrait

Airbrush

- 61. Landscape
- 62. Still Life
- 63. Portrait

Tempura

- 67. Landscape
- 68. Still Life
- 69. Portrait

Charcoal

- 73. Landscape
- 74. Still Life
- 75. Portrait

Sculpture

- 79. Clay
- 80. Metal
- 81. Ceramic

- 47. Floral
- 48. Abstract

- 52. Animal
- 53. Floral
- 54. Abstract

- 58. Animal
- 59. Floral
- 60. Abstract

- 64. Animal
- 65. Floral
- 66. Abstract

- 70. Animal
- 71. Floral
- 72. Abstract

- 76. Animal
- 77. Floral
- 78. Abstract

- 82. Art Dough, soft
- 83. Art Dough, baked
- 84. Other

Department 12- Photography

Photography Rules: Exhibits must be made by the exhibitor and not previously entered at the SLV County Fair. Photographs must be taken by the exhibitor, framed or matted, and ready to hang. Scotch tape and string hangers are not recommended for hanging.

Camera, Point & Shoot

- 1. Ranch Life
- 2. Portrait
- 3. Landscape
- 4. Still Life
- 5. Floral

- 6. Abstract
- 7. Animal – Domestic
- 8. Animal – Wildlife
- 9. Action
- 10. Architecture
- 11. All Other Camera, Point & Shoot

Camera, Color, Edited

- 12. Ranch Life

- 13. Portrait

- 14. Landscape
- 15. Still Life
- 16. Floral
- 17. Abstract
- 18. Animal – Domestic

Camera, Black and White, Edited

- 23. Ranch Life
- 24. Portrait
- 25. Landscape
- 26. Still Life
- 27. Floral
- 28. Abstract

Cell Phone, Point & Shoot

- 34. Ranch Life
- 35. Portrait
- 36. Landscape
- 37. Still Life
- 38. Floral
- 39. Abstract

Cell Phone, Color, Edited

- 45. Ranch Life
- 46. Portrait
- 47. Landscape
- 48. Still Life
- 49. Floral
- 50. Abstract

Cell Phone, Black & White, Edited

- 56. Ranch Life
- 57. Portrait
- 58. Landscape
- 59. Still Life
- 60. Floral
- 61. Abstract

- 19. Animal – Wildlife
- 20. Action
- 21. Architecture
- 22. All Other Camera, Color, Edited

- 29. Animal – Domestic
- 30. Animal – Wildlife
- 31. Action
- 32. Architecture
- 33. All Other, Camera, B&W, Edited

- 40. Animal – Domestic
- 41. Animal – Wildlife
- 42. Action
- 43. Architecture
- 44. All Other Cell Phone Point & Shoot

- 51. Animal – Domestic
- 52. Animal – Wildlife
- 53. Action
- 54. Architecture
- 55. All Other Cell Phone, Color, Edited

- 62. Animal – Domestic
- 63. Animal – Wildlife
- 64. Action
- 65. Architecture
- 66. All Other Cell Phone, B&W, Edited

4-H GENERAL & CONSUMER SCIENCE

Indoor Building

Overall 4-H General & Home Economics Superintendent: Kallie Shawcroft (719) 992-1720

Entry fee: \$2 per project

Premiums:

Division Champion	\$100 plus award
Division Reserve Champion	\$75 plus award
Unit Champion	\$10
Unit Reserve	\$9
Blue Award	\$8
Red Award	\$7
White Award	\$5

Members will be paid on all placing awards. Premiums will be distributed to exhibitors by the Fair Board at a later date.

4-H General Exhibit Regulations

All exhibitors are expected to help with their set up or tear down assignment. Please see the schedule for set up and tear down times.

1. Exhibit entries will be done online.
2. All Home Ec. & General 4-H exhibitors will report with their projects to the designated Superintendent for each department during check in time (see schedule). Signs will be posted indicating where projects may be checked in.
 - a. Interview judging will be scheduled during Check-In. The exhibitor will be given an estimated time of interview from the Superintendent. Generally, interview slots are given on a first-come, first-served basis, but preference will be given to kids participating in concurrent shows.
 - b. Interview judging is an evaluation technique designed to provide the 4-H member an opportunity to discuss with the judge achievements accomplished, improvements needed, and plans for advancement in the project. Participating in the interview process is optional. The choice to participate in the interview judging will not affect the final exhibit placing.
3. Eligibility: Exhibitors in the divisions of this department must be bona fide members of Colorado 4-H whose project work (must be the 4-H member's own work and sources must be cited; plagiarism will not be tolerated) and records are certified and up-to-date and deemed eligible by the appropriate Extension Agent. In addition, exhibitors must be at least eight years of age, must not have reached their 19th birthday as of December 31 of the current enrollment year and must satisfy other eligibility requirements (if specified) for a class, to compete in that class.
4. Review specific exhibit requirements in the Colorado State Fair Exhibit Requirements document, available on the Colorado 4-H website at: <http://co4h.colostate.edu/statefair/StateFairExhibitReq.pdf>
5. 4-H members may enter only once in the same class from each county.
6. If a member enrolls in two units of the same project (for example, Unit 2 and Unit 3 of Leathercraft), the member must exhibit in the higher level – Unit 3 in this case). When a member takes two units at the same time, the member should master the skills of the lower unit and therefore exhibit in the higher unit.
7. Members must be enrolled in the project (these projects may be broken down into units, levels or categories) in which they exhibit.
8. A completed record book must accompany all exhibited 4-H projects; not having a record book will result in a disqualification.
9. 4-H e-Records may be completed by pencil, ink or computer. The choice will not affect judging. Each exhibit requires a sturdy binder. Do not use record book binders that are clear plastic with sliders.
10. All parts of the exhibits (includes record book) must be accompanied by a completed label containing the Name, Age, Project, Unit and County of the exhibitor. For security reasons, do not list the member address on projects.

11. Display boards must meet the specifications. The standardized display board size of 4 ft x 3 ft is to be used for 4-H projects.
12. Most projects are divided by Junior, Intermediate and Senior age groups. The age for Juniors is 8-10, Intermediates is 11-13, and Seniors is 14-18. All ages are determined as of December 31 of the current enrollment year.
13. All exhibits must be displayed and remain on display for the duration of the fair. Any and all exhibits that are removed prior to release on Friday, after the sale begins, will forfeit all awards.
14. Any exhibit released for Fashion Revue must be returned for display on the same day.
15. The management will not be responsible for loss or damage to exhibits, though it will use all care to ensure their safety.
16. All exhibits not selected for the State Fair will be released on Friday, August 8 after the Livestock Sale begins.
17. **Baked goods such as food and/or cake exhibits that qualify for State may be redone and returned to the SLV Extension Office no later than noon the Monday following the fair.** All other (non-food) indoor projects selected to go to the State Fair will be taken by the Extension Staff at time of project release Friday evening. (Exhibitors may come into the Extension Office between 10 am & noon on Monday to make any changes to projects or record books before they go to the State Fair. All changes must be completed in the office.)

Fair Judging/Ribbon Awards

1. 4-H projects are judged upon the following quality and standards, each exhibit is awarded a Blue, Red or White award ribbon:
 - a. **Blue:** A blue ribbon is awarded to projects with minimal to no corrections needed and 80% project completion.
 - b. **Red:** A red ribbon is awarded to projects with substantial corrections and 50-79% project completion.
 - c. **White:** A white ribbon is awarded to projects who meet less than 50% project completion.
2. The judge will determine which project(s) deserve to go to the Colorado State Fair. Only projects with a blue ribbon are eligible for a State Fair ribbon. Unit and Division Champion status does not matter. Only 1 exhibitor per unit, per age group, per county is allowed to attend the state fair.
3. **Unit Champions**
 - a. Each Unit may award one Unit Champion and one Unit Reserve Champion per age group, if merited.
 - b. Only Blue award exhibits will be considered for Unit Champion and Unit Reserve Champion ribbons.
4. **Division Champions**
 - a. Only Unit Champion or Unit Reserve Champion exhibits will be considered for Division Champion and Division Reserve Champion.
 - b. Division Champion and Division Reserve Champions do not go by age.

For all Area & State exhibit requirements and Classes refer to the 2025 Colorado State Fair 4-H Exhibit Requirements.

<https://co4h.colostate.edu/statefair/StateFairExhibitReq.pdf>

SLV Area Only Divisions:

Lego Building

Lego Unit Guidelines

1. All structures must be constructed from LEGO pieces or other toy building blocks only. No wood, glue, metal, etc. may be used to construct the structures or models.
2. The project must be presented on a LEGO construction board or plywood and must be attached to the board.
3. Your LEGO pieces must be completed on all sides for viewing.
4. You must do all the construction yourself.
5. You must complete and turn in a record book.

Lego Units:

1. Lego vehicle from kit (car, plane, boat, etc.) Size limit 14" X 22"
2. Lego structure from kit (house, bridge, etc.) Size limit 14" X 22"
3. Lego non-motorized robot from kit --Size limit 14" X 22"
4. Lego mechanical from kit (w/motor and must move) Size limit 14" X 22"
5. Lego plate of food
6. Lego animal -- Size limit 14" X 22" (must be original not from a kit)
7. Lego vehicle -- Size limit 14" X 22" (must be original not from a kit)
8. Lego structure -- Size limit 14" X 22" (must be original not from a kit)
9. Lego non-motorized robot -- Size limit 14" X 22"
10. Lego model themed kit (i.e. star wars)
11. Lego model themed set (i.e. 2-5 Star Wars themed models from a kit)
12. Any other Lego model not listed above

Ag Production

All exhibits will consist of the following:

1. A project manual
2. A display board illustrating a topic investigated during the project year. The standardized display board size of 4 ft. x 3 ft. is to be used with 4-H projects.
3. Project will be evaluated on the quality of the information completed in the e-Record (25 percent) and the quality of the exhibit (75 percent).

Ag Production Units:

1. Farm Cents Unit 1
2. Farm Cents Unit 2
3. Farm Cents Unit 3
4. Production Animals Unit 1
5. Production Crops Unit 2
6. Production Other Unit 3
7. Heavy Machinery Unit 1
8. Heavy Machinery Unit 2
9. Heavy Machinery Unit 3

Junior Livestock Auction BBQ

Hosted by Farmers Union and District 8

**FRIDAY
AUGUST 8
4:00-6:00 PM**



Enjoy a great meal of pulled pork, baked beans, coleslaw dessert and more on Friday night before the SLV Fair Junior Market Livestock Sale!



Proceeds help support the Valley 4-H clubs and counties. These groups do community service, perform 4-H outreach, and provide funds to local 4-Hers to attend leadership camps and conferences.

Buy a ticket at the door!

The San Luis Valley Fair Board is proud to support the youth that have put in hours of sweat, tears and hard work all year to complete their livestock projects. Each livestock exhibitor is allowed to choose one animal to sell in the Junior Livestock Auction. Through the support of the generous buyers and sponsors of the sale, these youth are shown that this valley truly believes in them!

GENERAL LIVESTOCK RULES

The San Luis Valley Fair Board expects all individuals to practice ethical and humane treatment of animals consistent with accepted animal husbandry practices. The following are termed “unethical practices”:

1. Surgical procedures, drugging, tubing, or injecting (any oil, glycerin or like substance) which could affect the animal’s performance or alter its natural contour, conformation, or appearance
2. Striking animals to cause swelling, using electrical contrivance, or other similar practices
3. Altering, changing, defacing or modifying of the markings and the anatomical structure of an animal
4. External applications of such things as liniments and blistering agents (irritant, counterirritant, or similar substance) that would cause an edematous condition.
5. Use of ice packs or other refrigerants to alter the quality of the finish of an animal.

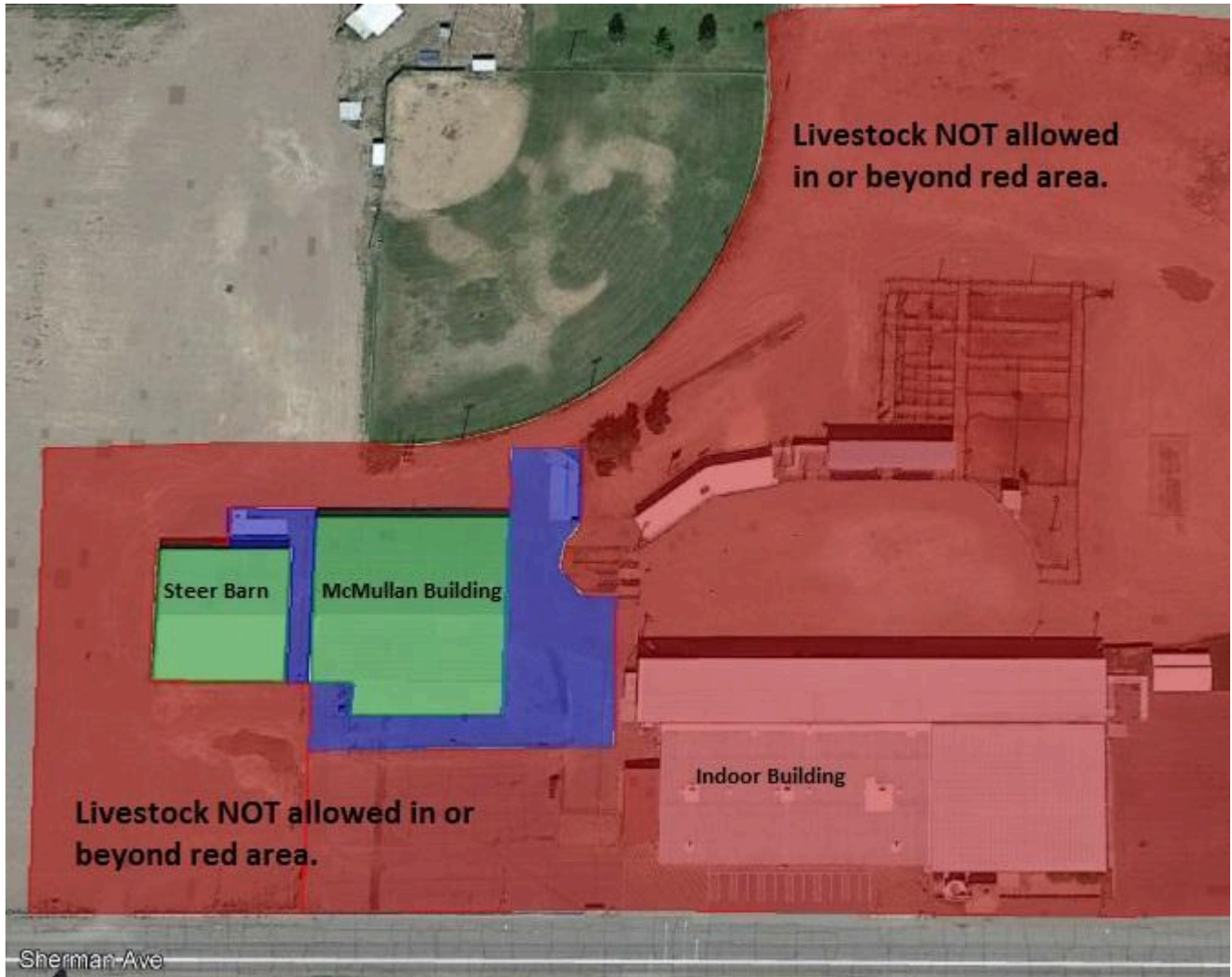
Any exhibitor/individual found guilty of any of the above listed or any other practice deemed unethical by the San Luis Valley Fair Board may be subject to forfeiture of all privileges, awards, and premiums and to such other penalty deemed appropriate by the Fair Board, or may be subject to prosecution under CRS 18-9-207 Tampering or Drugging Livestock.

The following practices are not allowed:

1. Towels immersed in ice water; wet towels only will be acceptable.
2. An artificial tail head or tail fin, artificial poll, or adding any hair or hair like substance.
3. Removal, alteration, changing, or purposely damaging ear tags.
4. Decorating animals with any unnecessary trappings during the judging.

DESIGNATED AREA MAP

*Once market livestock animals are unloaded, they are NOT allowed in the **red** shaded area for any reason.*



OPEN LIVESTOCK DIVISION

(Participation from the community encouraged)

Overall Livestock Superintendent: Mark Brown (719) 588-1551

Division: MIKE KELLEY MEMORIAL OPEN BARROW SHOW

Entry fee: \$15 due day of show

1. The open show is for Barrows only! Barrows must be born after December 15, 2024.
2. Show is open to all showmen and/or relatives of **SLV Fair Participants**.
3. Participants can be of any age since it is an Open Show.
4. Barrows do not need to be tagged unless they are intended for both the Open Show and the Market Swine Show.
5. Showmen will declare weights and barrows will be divided into as near equal classes as feasible by weight.
6. All barrows must be washed and clean prior to weigh-in. Those not clean will be disqualified.
7. Entry fees will be jackpotted between class winners.
8. Judge's decisions are final.
9. The Grand Champion Barrow will be awarded \$500
10. All entries in this show are subject to the General Livestock Rules.
11. Barrows that are not going to participate in the 4-H/FFA Market Swine Show need to be removed from the grounds immediately following the show.
12. The Open Barrow Show does not qualify any participant for the SLV Fair Junior Market Livestock Sale.
13. 4-H/FFA Market entries must be reweighed at regular weigh in.

JUNIOR LIVESTOCK DIVISION

Overall Livestock Superintendent: Mark Brown (719) 588-1551

GENERAL LIVESTOCK RULES & REGULATIONS

NOTICE TO ALL LIVESTOCK EXHIBITORS:

Stalls and pens must be kept neat and supplied with necessary clean bedding. Wood shavings will be available for sale at a reasonable rate. Dairy goats may use straw but it must be cleaned upon check-out. Wood shavings will be allowed in all pens for bedding. Exhibitors may use muzzles, please see species specific rules for more information.

1. By submitting a fair entry, each animal exhibitor and their parent/guardian agree that they have read the policies, rules, and regulations printed in this book and will abide by them. It also indicates that they understand the consequences of, and penalties provided for actions by the policies, rules, and regulations. It is further consent that any action, which contravenes these rules and is in violation of federal or state regulations, may be reported to appropriate law enforcement authorities with jurisdiction over such infractions without recourse against the SLV Fair Board.
2. **ALL MARKET LIVESTOCK EXHIBITORS MUST ATTEND THE MANDATORY MEETING, SEE SCHEDULE FOR LOCATION AND TIME. PACKETS MAY ONLY BE PICKED UP BY THE EXHIBITOR, AND IF NOT PICKED UP, EXHIBITOR WILL NOT SHOW OR SELL ANIMAL(S).**
3. The Livestock Building will be closed from 10:00 pm-6:00 am while livestock are present.
4. **2025 FAIR ENTRIES AND PAYMENTS MUST BE POSTMARKED AND/OR RECEIVED NO LATER THAN JULY 12, 2025. ANY ENTRY RECEIVED OR POSTMARKED JULY 13, 2025 THROUGH JULY 19, 2025 WILL BE SUBJECTED TO A \$50 LATE FEE PER EXHIBITOR. NO ENTRIES WILL BE ACCEPTED AFTER THIS DATE. NO EXCEPTIONS.**
5. All exhibitors are expected to help with their set up or tear down assignment. **There will be a \$50 fee charged if the exhibitor does NOT help with set up and clean up within their project area. This fee will be deducted from their Sale Check.** *Horse specific set up/tear down times are listed in the horse section.
6. Only San Luis Valley 4-H/FFA members enrolled and in good standing, in the current year's program may exhibit in this Division. Members must be enrolled in 4-H/FFA for the project they exhibit and every animal must be a 4-H/FFA project.
7. No 4-H/FFA exhibitor shall conspire with another person(s) to intentionally violate these rules or knowingly contribute or cooperate with another person(s) either by affirmative action or inaction to violate these rules. Violation of this shall subject such individual(s) to disciplinary action. The application of these rules provides for absolute responsibility of an animal's condition to the 4-H/FFA exhibitor whether or not he/she was actually instrumental in or had actual knowledge of the treatment of the animal in contravention of these rules.
8. Exhibitors of animals at the SLV Fair shall at all times comport themselves with honesty and good sportsmanship. Their conduct in this competitive environment shall always reflect the highest standards of honor and dignity to promote the advancement of agricultural education. All leaders working with 4-H/FFA exhibitors are under an affirmative responsibility to do more than avoid improper conduct or questionable acts. When an individual or exhibitor is guilty of unsportsmanlike conduct the SLV Fair Board can suspend the privilege of the person to attend or participate in future San Luis Valley Fairs for such a period as judged appropriate.
9. 4-H/FFA leaders, fitters, breeders, parents, and family members (over the age of 12) may assist exhibitors in fitting, caring for and handling livestock. Such assistance must be educational and demonstrational, or a matter of safety, and the exhibitor must be present and actively involved when such assistance is provided. The SLV Fair Board has the right to disqualify an exhibitor for disregarding this rule.
10. The exhibitor must own breeding animals by May 1, 2025 (Beef, Goat, Sheep, Swine, Dairy, Poultry, Egg

Production Poultry, and Exhibition Poultry). Exhibitors must prove ownership, by bill of sale or registration papers, if requested by the Superintendent. Misrepresentation of ownership, age, or any facts relating thereto is prohibited.

11. The exhibitor must own market animals by beginning weigh in/tag date. No substitutions can be made due to loss of an animal after June 1, 2025. Eligible exhibitors from the same family (siblings or same guardian) may weigh/tag family extra animals equal to 1 less than the number of family members in that project (Example: 3 exhibitors in a market project may tag/weigh up to two extra animals). This will only apply to enrolled 4-H/FFA members of the same family. Changing tagged and identified animals between family members will not be allowed.
12. The Exhibitor must own Market Turkeys and Waterfowl by May 15, 2025.
13. The Exhibitor must own Market Chickens by June 15, 2025.
14. Beef, goats, lambs, and pigs must be ear tagged on beginning weigh in/tag dates. Swine must be ear tagged and ear notch verified. Lost tags must be reported to a Fair Board member, Extension Agent or Species Superintendent within 48 hours upon animal losing the tag. No animals will be tagged at final weigh in: NO TAG – NO WEIGH IN. See specific divisions for final weigh in and Check-in dates, times, and entry fees.
15. All poultry must be banded on banding day, please contact the Extension office or Superintendent for more information on banding dates & procedures.
16. Market animals are allowed to cross the scale only one time at final weigh-in (except, swine, meat goats and sheep weighing within two pounds under minimum weight or two pounds over maximum weight) in which they may be immediately re-weighed if the exhibitor chooses.
17. Each exhibitor may enter up to four (4) market animal entries per species (including poultry and rabbits).
18. The same animal cannot be shown in both breeding and market divisions.
19. All 4-H/FFA livestock exhibitors will be assigned an exhibitor's number that must be worn by the exhibitor while showing.
20. All animals must be on grounds and entered at the time designated to be eligible to show.
21. Animals must be shown by the 4-H/FFA exhibitor, however, the Fair Board may allow another SLV 4-H/FFA exhibitor to substitute in showing in case of illness, injury, or death. If an exhibitor has two animals in the same class another SLV 4-H/FFA exhibitor may show one of the animals.
22. All animals need to be fed and watered at least twice daily, and otherwise cared for during the Fair. Exhibitors are expected to help keep exhibit areas, grooming areas, and barn perimeters clean and attractive. All animals and other exhibits should be kept clean and in a presentable condition at all times. The Superintendent or SLV Fair Board reserves the right to feed and water neglected animals. Any animal deemed neglected will not be eligible for exhibition or sale.
23. No parents or leaders are allowed in the show ring unless the Superintendent approves them.
24. A veterinarian will be on call during the San Luis Valley Fair. All animals will be subject to health and soundness inspection; it is mandatory that all animals be checked for evidence of infectious or contagious disease. Animals showing evidence of contagious or infectious diseases or any animal originating from a herd under quarantine because of an infectious or contagious disease shall be ineligible for admission. An ill or unsound animal will not be allowed to participate. The Veterinarian, SLV Fair Board and/or the Superintendent will release any animal during the Fair, found to be non-acceptable.
25. Any market male animal that exhibits the characteristics or traits of an intact male may be disqualified at any time. Cryptorchid or short scrotum animals will not be eligible to show or sell.
26. At any time after an animal arrives at the Fair, the use of drugs and/or medications for the sole purpose of protecting the health of the animal shall be administered or supervised by a licensed veterinarian with the species superintendent, and a written report filed with the San Luis Valley Fair Board and placed in the official entry book. A Superintendent or the SLV Fair Board has the right to call for the services of a veterinarian in the treatment of a sick animal (if the exhibitor is not available). Any veterinary fees are the responsibility of the exhibitor.
27. The San Luis Valley Fair supports and endorses the USDA Wholesome Meat Act and requires all exhibitors

to be in compliance. The extension office will hold all compliance forms and report who is not in compliance before the fair begins.

28. Animals shall be presented at the SLV Fair where they will enter the food chain free of volatile drug residues. The act of entering an animal in the SLV Fair is the giving of consent by the 4-H/FFA exhibitor to the SLV Fair Board to obtain any specimens of urine, saliva, blood, or other substances from the animal to be used in testing. If the laboratory report on the analysis of saliva, urine, blood, or other sample taken from livestock indicates the presence of forbidden drugs or medication, this shall be prima facie evidence such substance has been administered to the animal either internally or externally. It is presumed that the sample of urine, saliva, blood, or other substance tested by the laboratory to which it is sent is the one taken from the animal in question, its integrity is preserved and all procedures of said collection and preservation, transfer to the laboratory and analysis of the sample are correct and accurate and the report received from the laboratory pertains to the sample taken from the animal in question and correctly reflects the condition of the animal at the time the sample was taken, with the burden on the exhibitor or absolutely responsible person to prove otherwise.
29. If any animal, exhibitor, or individual is being a danger to themselves or others, the SLV Fair Board and/or the Superintendent may disqualify the animal, exhibitor, or individual and take other appropriate action for the wellbeing and safety of all SLV Fair participants.
30. No animals may be released from the Fairgrounds without prior approval of the species Superintendent. All non-sale animals must be removed from the Fairgrounds by 8:00 pm on the Thursday before the auction, or a \$100 charge will be assessed.
31. The species Superintendents will make stall or pen assignments. It shall be at the discretion of the superintendent, not club, superintendents have the discretion to change pen assignments.
32. Each animal exhibited will be awarded a placing ribbon through 10th place.
33. The first-place animal of each class will compete for Breeding/Market Division Champion. After the Breeding/ Market Champion is selected, the second-place animal in the class furnishing the Champion then competes with the remaining first place animals for Reserve Breeding/Market Champion.
34. If the Superintendent divides the entries into classes for the objective of determining breed champions and the result is less than 5 entries in that class, then only plaques and/or rosettes for Grand and Reserve Champion breed awards will be given.
35. Market animals that qualify for feeder or overweight classes will not be eligible for Grand or Reserve in their prospective market species show or for the Junior Livestock Sale.
36. Animals will not be allowed beyond posted designated areas, see the map in this book [Here](#).
37. Any negative behavior on the part of the exhibitor, family members or leaders directed toward any official or judge will result in disqualification and awards forfeited. If there is a question as to the rules or the judging of a class, adult family members or leaders must approach the Superintendent and not the judge. The Superintendent will then take the question to the judge(s) if warranted.
38. Direct criticism or interference with the Judge(s), Fair management, other exhibitors, or show officials before, during, or after the competitive event is prohibited and may result in disqualification. In the furtherance of their official duty all judges, Superintendents, and other show officials shall be treated with courtesy, cooperation, and respect and no person shall direct abusive or threatening conduct toward them. All questions or comments must be directed to species Superintendents.
39. All entries are also subject to specific species regulations printed in this book.
40. All livestock project exhibitors are required to complete a record book to complete their project. They must submit completed record books to the Extension office by Friday, September 12, and score a minimum of 70% on them to be eligible to enroll in that project the following year. Members who do not achieve the minimum 70% will be contacted and given one week to pick up their record book, make corrections and re-submit it to achieve a passing score. Youth who do not turn in their record book, or meet the minimum score requirement, will not be allowed to enroll in that project or compete in the fair in that area in the next 4-H year.
41. All livestock exhibitors are required to wear appropriate show attire when competing. Shorts, tank tops,

low-cut shirts, sheer blouses, flip flops, t-shirts, shirts with inappropriate messages or logos, ball caps, hats, or bare midriffs are not acceptable attire and may not be worn during a show event. Recommended dress is as follows: long or short-sleeved, button-down shirt or blouse, clean jeans or slacks with belt. Hard soled, closed-toed shoes or boots are recommended to protect feet. Rabbit and Chickens: jeans or slacks and long-sleeved shirts are preferred for safety. Dairy Cattle and Dairy Goats: white shirts and pants are recommended. The Fair Board or superintendents may refuse anyone improperly dressed entry into the show ring until said exhibitor is properly dressed.

42. Drenching will be allowed for cattle, sheep, and goats for hydration purposes only. An animal may only be drenched by the exhibitor or his/her parent/guardian. Drenching may not occur on the fairgrounds until after weigh in and until the waiver has been signed. Before any animal may be drenched by the exhibitor or the parent/guardian, a waiver must be signed and on file in the fair board office. The waiver releases the fair board of all liability to the animal that is being drenched. The animal's identification tag must also be on file.
43. Abuse of an animal in any form will not be allowed. Electric prods will not be allowed at any time. Any violation of this rule will result in immediate disqualification with no recourse.
44. Skin Conditioning products may be used as needed before and during judging. Exhibitors are allowed to enhance, but not change the natural color of the animal before and during judging. Markings must remain their natural color. For example white hair must stay white, black hair must stay black, red hair must stay red. No products may be applied for the sale or after as they could affect meat quality.
45. The San Luis Valley Fair Board expects all individuals to practice ethical and humane treatment of animals consistent with accepted animal husbandry practices. The following are termed "unethical practices":
 1. Surgical procedures, drugging, tubing, or injecting (any oil, glycerin or like substance) which could affect the animal's performance or alter its natural contour, conformation, or appearance
 2. Striking animals to cause swelling, using electrical contrivance, or other similar practices
 3. Altering, changing, defacing or modifying of the markings and the anatomical structure of an animal
 4. External applications of such things as liniments and blistering agents (irritant, counterirritant, or similar substance) that would cause an edematous condition.
 5. Use of ice packs or other refrigerants to alter the quality of the finish of an animal.
46. The following practices are **NOT ALLOWED**:
 1. Towels immersed in ice water; wet towels only will be acceptable.
 2. Adding an artificial tail head or tail fin, artificial poll, or adding any hair or hair like substance.
 3. Removal, alteration, changing, or purposely damaging ear tags.
 4. Decorating animals with any unnecessary trappings during the judging.
47. In cases where unethical fitting or other unethical practices appear to have been attempted, the SLV Fair Board may appoint a veterinarian, official, or committee to inspect the entry. The Fair Board will follow a course of action based upon the findings and conclusions of the examining veterinarian, official, or committee.
48. All arena equipment is off limits to all exhibitors and guests unless it is being utilized for animal husbandry and shows. Penalties could include disqualification from the fair, loss of awards and possible forfeit of participation in next year's fair.

Any exhibitor/individual found guilty of any of the above listed or any other practice deemed unethical by the San Luis Valley Fair Board may be subject to forfeiture of all privileges, awards, and premiums and to such other penalty deemed appropriate by the Fair Board, or may be subject to prosecution under CRS 18-9-207 Tampering or Drugging Livestock.

ALL DECISIONS OF THE SLV FAIR BOARD, SUPERINTENDENTS, OR JUDGES ARE FINAL.

An official photo must be taken of the animal you plan to sell. Seller must pick up the Buyer Thank You Photo, and the Buyer's Thank You Received Form, from the Extension office. Take this photo, and any other thank you gift you choose, to your buyer and have the buyer sign the Buyer's Thank You Received Form. You are responsible for getting the form to the Fair Board by October 6, 2025 or you will not sell in 2026.

SLV FAIR SALE RULES & REGULATIONS

See specific species regulations for additional sale rules or qualifications.

1. Only 4-H/FFA market livestock projects successfully exhibited and placed at the SLV Fair are eligible for the SLV Fair Junior Market Livestock Sale.
2. All Grand and Reserve Champion Market Beef, Swine, Sheep and Goats must sell. This also applies to exhibitors who have more than one Grand or Reserve Champion animal.
3. An exhibitor may sell only one animal (with the above exception), but may choose which species to sell if more than one species is shown.
4. Exhibitors MUST complete a sale designation form for each sale animal. Completed Sale Designation Forms and photo release forms must be turned in to the SLV Fair Office by 9:00 pm/or 1 hour after the end of the last market show (whichever is later).
5. The exhibitor is liable and will stand the loss without any recourse against the San Luis Valley Fair, if any drug residue is found rendering the carcass of any market animal unusable, as determined by an inspection officer at the packing plant.
6. Order of the 2025 SLV Fair Junior Market Livestock Sale:
 - Poultry and Rabbits, Swine, Beef, Sheep, Goats
 - All Champions, then All Reserve Champions.
 - Herdsman Award winners, then Born & Raised champions
 - Sale will consist of 1/3 of each species on rotation.
7. Each SLV Junior Market Livestock Sale animal will be charged 3% of the purchase price, proceeds going to the SLV Fair Board. Sale photographs will be charged, and the buyer 4-H Dinner tickets will be charged at cost.
8. THE SALE ORDER WILL BE STRICTLY ENFORCED. ONLY EXHIBITORS & ANIMALS PRESENT IN SALE ORDER WILL SELL.

HERDSMAN AWARD

Since special effort is required by livestock exhibitors to present their exhibits, Herdsman Awards are given. The following criteria will be used by species Superintendents for selection of the award recipients:

- A. Sportsmanship
- B. Cleanliness of stalls and/or animals
- C. Neatness of area around pen or stall
- D. Promptness in the show ring
- E. Courtesy to judges and others
- F. Regularity of feeding and watering of stock
- G. Respect and care of facilities
- H. Number of species and animals taken care of

AWARDS

Herdsman Awards may be presented to an individual 4-H or FFA member participating in the following Breeding and Market Livestock projects: Beef, Goat, Sheep, Swine, Dairy Goats, Poultry and Rabbits.

BORN & RAISED

Entries in these classes will be judged immediately following feeder classes for Beef, Swine, Sheep and Market Goats.

1. The purpose of the Born and Raised division is to promote and recognize exhibitors who are involved in animal production.
2. All General, Livestock and Department rules apply.
3. These classes are open to all Junior exhibitors who show a market goat, lamb, swine, or beef that was born to a dam that was owned by the Exhibitor or by a member of the immediate family (Mother, Father, Brother or Sister) at the time of birth. The animal must be born and raised in one of our six exhibiting counties (Saguache, Rio Grande, Alamosa, Costilla, Conejos and Mineral). Exhibitors may be asked to prove ownership. Failure to prove ownership will disqualify animals from the contest and exhibitors will relinquish awards.
4. In order to qualify for the Born and Raised class the animal must be entered and shown in their regular market class, make market weight and/or be market ready as described in each species market rules.
5. Born & Raised competitors should enter their animal(s) in the Born & Raised class, in addition to the general market class.
6. Feeder class and overweight animals are not eligible for Born & Raised.

AWARDS

Grand and Reserve Champion in each species.

SHOWMANSHIP CLASSES

1. One showmanship contest will be held for each species (Beef, Sheep, Swine, Market Goat, Dairy Goat, Poultry and Horse).
2. **Exhibitors should pre-register for showmanship classes online when submitting Fair entries.**
3. Participants must use their own animals to participate, and are responsible for the grooming and preparation of the animal.
4. There will be Junior, Intermediate and Senior divisions in showmanship contests. Age divisions will be: Junior (8-10), Intermediate (11-13), and Senior (14-18) including eligible FFA Members, as of December 31, 2024.
5. Champion, Reserve Champion, and through fifth place will be chosen for each species and age division.
6. Premiums will not be awarded for showmanship classes.
7. Any exhibitor winning a position in more than one species must declare which species they will use in the Round Robin contest. Exhibitors must declare species to be shown by the completion of the last showmanship class of the fair. If not declared by this time the alternate from the same species will then fill the vacant position at the Superintendent's discretion.
8. An animal must show in another class to be eligible to show in the showmanship class. Look at individual species sections of the book for class, fee and judging information.

AWARDS

Grand & Reserve Champion by age division

ROUND ROBIN SHOWMANSHIP INFORMATION

1. Exhibitors earn their placement in this contest during the species showmanship contests for Beef, Market Goat, Swine, Sheep, Horse and Dairy Goat.
2. All contestants must supply their animal for the contest. Additional animals will be selected to make up classes of ten. Animals will be selected and substituted at the species superintendent's discretion.
3. Contestants will be allowed to exhibit their own animal when competing in that species.
4. Exhibitors will be competing in their age groups - Senior, Intermediate, Junior - at the same time, on a rotating schedule of species.
5. Each rotation will be 15 minutes in length including the change to a new species.
6. Exhibitors who place 1st or 2nd in showmanship in more than one species must declare the species they will represent in Round Robin immediately following the last species showmanship contest.
7. No individual, who is not an exhibitor in the Round Robin, or a member of the Fair Board on official business or designated by the Horse Superintendent to help with the running of the competition, may enter the horse arena at any point between the start and end of the Round Robin competition.
8. The dress code for Horses can be found in the Horse section of the Fair Book under #12 of the Horse Regulations, see the Western (and Gymkhana) Division dress code. The Horse Superintendent will provide cowboy hats for the exhibitors who do not have access to one to use in the competition.

AWARDS

Grand & Reserve Champion by age division

Overall Champion Showman (highest total score)

The awards will be announced (5-10 minutes) before the Junior Livestock Sale Friday night starting at 6 pm. All contestants need to be in the McMullen Building before the Sale to be prepared to receive their award.

SLV FAIR AWARD SUMMARY

Indoor

Indoor Division Champion \$100
 Indoor Division Reserve Champion \$75
 Unit Champion \$10
 Unit Reserve \$9
 Blue Award \$8
 Red Award \$7
 White Award \$5
 Member will be paid on all placing awards

Market Species (Beef/Sheep/Swine/Goat)

Grand Champion - Buckle
 Reserve Grand Champion - Buckle
 Division/Breed Grand Champion
 Division/Breed Reserve Grand Champion
 Born and Raised Grand Champion
 Born and Raised Reserve Grand Champion
 Showmanship Sr., Int., Jr. Grand Champion
 Showmanship Sr., Int., Jr. Reserve Champion
 Showmanship Sr., Int., Jr. Top 5 (3rd-5th)
 Round Robin Sr., Int., Jr. Grand Champion
 Round Robin Sr., Int., Jr. Reserve Grand Champion
 Overall Round Robin Champion Showman
 Ribbons 1st-10th All Classes

Breeding Species (Beef/Sheep/Swine/Production Goat)

Premiums
 1st \$10
 2nd \$9
 3rd \$8
 4th \$7
 5th and down \$5
 No more than 2 premiums will be awarded to an exhibitor under any one class.
 Supreme and Reserve Supreme Beef
 Supreme and Reserve Supreme Dairy
 Overall Grand and Reserve Gilt
 Breeding Sheep minimum of 5 for a division/breed
 Grand and Reserve Ewe
 Grand and Reserve Ram
 Champion and Reserve Champion Production Meat Doe
 Champion and Reserve Champion Production Meat Buck

Dairy Goat

Premiums
 1st \$10
 2nd \$9
 3rd \$8
 4th \$7
 5th and down \$5
 No more than 2 premiums will be awarded to an exhibitor under any one class.
 Grand and Reserve Champion Jr. Doe by Breed
 Grand and Reserve Champion Sr. Doe by Breed
 Best in Show Jr. Doe
 Best in Show Sr. Doe
 Best Udder of Show
 Showmanship Sr., Int., Jr. Grand Champion

Showmanship Sr., Int., Jr. Reserve Grand Champion

Breeding Rabbits

Premiums
 1st \$10
 2nd \$9
 3rd \$8
 4th \$7
 5th and down \$5
 No more than 2 premiums will be awarded to an exhibitor under any one class.
 Each Breed Class
 Best of Show & Reserve Best of Show Breeding Rabbit

Market Rabbit

Grand & Reserve Champion Market Rabbit
 Showmanship Sr., Int., Jr., Grand Champion
 Showmanship Sr., Int., Jr., Reserve Grand Champion

Breeding Poultry

Premiums
 1st \$10
 2nd \$9
 3rd \$8
 4th \$7
 5th and down \$5
 No more than 2 premiums will be awarded to an exhibitor under any one class
 Grand & Reserve Large Breeds
 Grand & Reserve Bantam Breeds
 Grand & Reserve Turkey
 Grand & Reserve Duck
 Grand & Reserve Goose
 Grand & Reserve Water Fowl
 Grand & Reserve Land Fowl
 Best of Show
 Reserve of Show

Market Poultry

Grand & Reserve Champion Broiler Class
 Grand & Reserve Market Turkey
 Grand & Reserve Market Waterfowl
 Showmanship Sr., Int., Jr. Grand Champion
 Showmanship Sr., Int., Jr. Reserve Grand Champion

Dog

Premiums - paid on Jr., Int., and Senior Showmanship Classes
 1st \$10
 2nd \$9
 3rd \$8
 4th \$7
 5th and down \$5
 Red, White and Blue Awards
 High Point Classes
 Supreme Overall Champion and Supreme Overall Reserve Champion

BEEF

Superintendent: Clay Brown (719) 480-2369

Division: BREEDING BEEF

Entry fee: \$5 per head/pair

Breeding Beef Regulations:

1. All entries are subject to the General Livestock Rules & Regulations.
2. Open to both registered and commercial breeding beef cattle.
3. Bulls over one year of age cannot be shown.
4. Breeding beef cattle over six months of age must have an official bangs tattoo, or test negative for brucellosis within 30 days prior to Fair. Health papers must be available upon request.
5. The superintendent will establish breed divisions as necessary and classes for breeds and/or divisions will be determined when entries are completed.
6. Classes without three or more entries may be shown individually or in combined classes at the discretion of the Superintendent/Judge(s).
7. All cattle in the tie out area of the livestock barn must be tied with a halter at all times, a neck rope is also required at night.
8. All decisions of the superintendent and judges are final.
9. Coloring is permissible below the knee, provided it does not alter the natural color of the hair coat.

Entries

BREEDING BEEF CLASSES

- Heifer Calf-calved after January 1, 2025
- Yearling Heifer-calved in 2024
- Cow-calf pair
- Bull Calf-calved after January 1, 2025
- FFA Heifer Wrangler exhibitors (please see CO FFA Association for more information)

AWARDS

Supreme and Reserve Supreme Overall Female

(Selected from Grand Champion female from each division)

Premiums: Premiums are paid on classes within each division, as established by the superintendent.

1 st	\$10
2 nd	\$9
3 rd	\$8
4 th	\$7
5 th & down	\$5

No more than 2 premiums will be awarded to an exhibitor under any one class. Premiums will be mailed.

Division: MARKET BEEF

Entry fee: \$5 per head. No fee for Bred & Fed classes.

Market Beef Regulations:

1. All entries are subject to the General Livestock Rules & Regulations
2. Market Beef must have been weighed and tagged at the beginning weigh-in February. Please bring brand inspection papers to weigh in. All market beef must be dehorned by beginning weigh-in.
3. A committee of 3, appointed by the SLV Fair Board, will evaluate and determine market readiness of market beef entries. An animal deemed not finished will show in a feeder class, regardless of weight, and WILL NOT SELL IN THE SLV FAIR JUNIOR MARKET LIVESTOCK SALE.
4. All market beef must be tied with a halter and a neck rope in the tie out area of the livestock barn.
5. No beef animals over 24 months will be allowed to exhibit at fair
6. All heifers must be accompanied by a veterinarian's certificate verifying they are preg-checked open within 30 days of fair.

Entries

MARKET BEEF CLASSES

1. Market Beef, as determined by weight
2. Born and Raised (see rules [Here](#), enter general Market Beef and Born and Raised classes to participate)

AWARDS

Grand & Reserve Champion Market Beef

Grand & Reserve Champion Born & Raised

MARKET CLASSES DO NOT RECEIVE PREMIUMS

Division: BEEF SHOWMANSHIP

Entry fee: None

See General Showmanship rules and awards on [Here](#).

BEEF SHOWMANSHIP CLASSES

1. Junior
2. Intermediate
3. Senior

Division: Dairy Cattle

Entry fee: \$5 per head/pair

General Dairy Rules

1. All entries are subject to the General Livestock Rules & Regulations.
2. Open to both registered and commercial breeding beef cattle. If registered, original registration papers must be provided at time of entry.
3. Bulls be shown.
4. Cattle over six months of age must have an official bangs tattoo, or test negative for brucellosis within 30 days prior to Fair. Health papers must be available upon request.
5. The superintendent will establish breed divisions as necessary and classes for breeds and/or divisions will be determined when entries are completed.
6. Classes without three or more entries may be shown individually or in combined classes at the discretion of the Superintendent/Judge(s).
7. All cattle will be tied in the tie out area, with a halter and neck rope.
8. Producing cows may be kept at a dairy. Exhibitors will be expected to visit the dairy during each month and make a one-page report. Exhibitors will be expected to care for mature cows during dry period.
9. All decisions of the superintendent and judges are final.

Entries

Age Classifications are as follows for all breeds:

Junior Females

Junior Heifer Calf - born between January 1, 2025-April 30, 2025

Senior Heifer Calf - born between September 1, 2024-December 31, 2024

Junior Yearling Heifer - born after February 28, 2024 and before September 1, 2024

Senior Yearling Heifer - born after August 31, 2023 and before March 1, 2023 (Senior Yearlings in milk must show in two-year-old class)

Senior Females

Two-Year Old - born after August 31, 2023 and before September 1, 2023

Three-Year Old - born after August 31, 2022 and before September 1, 2021

Four-Year Old - born after August 31, 2021 and before September 1, 2021

Aged Cow - five years old and over, born before September 1, 2021

AWARDS

Supreme and Reserve Supreme Overall Female

(Selected from Grand Champion female from each division)

Dairy Showmanship

There will not be a showmanship class

SWINE

Superintendent: Heather Tillman (719) 849-3644

Division: BREEDING SWINE

Entry fee: \$5 per head

Breeding Swine Regulations:

1. All entries are subject to the General Livestock Regulations & Rules.
2. Gilts ONLY of any breed may be shown.
3. Gilts must be under 12 months of age to be entered for show.
4. Breed divisions will be established as necessary. Divisions/lots without three or more entries may be shown individually or in combined lots at the discretion of the Superintendent/Judge(s).
5. Classes for breeds and/or divisions will be determined when the entries are completed.

Entries

BREEDING SWINE CLASSES

1. As determined by Superintendent

AWARDS

Overall Grand & Reserve Champion Gilt

Premiums: Premiums are paid on classes within each division, as established by the superintendent.

1 st	\$10
2 nd	\$9
3 rd	\$8
4 th	\$7
5 th & down	\$5

No more than 2 premiums will be awarded to an exhibitor under any one class. Premiums will be mailed.

Division: MARKET SWINE

Entry fee: \$5 per head. - No fee for Born & Raised classes.

Market Swine Regulations:

1. All entries are subject to the General Livestock Regulations & Rules.
2. All hogs and ear tags must be washed, and cleaned prior to weigh-in, **after weigh-in and during the show**. Those not clean will be disqualified.
3. Market swine must be tagged and ear notched on the day of tagging. Any animals not brought to that event must contact the superintendent to get tags and identification forms. All market swine must have at least one notch in each ear. If any part of the identifying information is incorrect or missing on forms submitted by families that didn't attend the tagging date, the animal(s) may be disqualified at fair weigh in and not allowed to show.
4. All Jr. market hogs must be born after December 15, 2024.
5. Prior to final weigh in, all swine entries will have ear tag and healed ear notches verified with their nomination card. Any discrepancy in ear notches and ID tags will result in the entry being disqualified.
6. Market swine will be weighed and divided into as near equal classes as feasible by breed at final weigh in.
7. Market classes will be offered in the breed divisions listed below with the order of show, from lightweight through heavyweight divisions, in the following order:
 1. Berkshire
 2. Chester White & Landrace
 3. Duroc
 4. Hampshire
 5. Spots & Poland China
 6. Yorkshire
 7. Other Purebred Breeds
 8. Crossbreeds
8. Only swine weighing between 230 and 300 pounds will be eligible for the sale. Pigs under 230 will be shown in feeder classes; pigs over 300 will be shown in heavyweight classes and **WILL NOT SELL**.
9. If there are more than 24 animals in a breed division, they will be divided by light, medium, and heavy weight divisions for the final championship drive.
10. Hogs will be classified by a panel of three by appearance based on the breed classification standards listed below. If an exhibitor wishes to contest the classification, they must present registration papers indicating the breed of the hog, which have been transferred to or registered in the name of the junior exhibitor and not in a family or farm name by July 1, 2025. All entries must be owned and have primary care by the exhibitor as of June 1, 2025. Home raised pigs require a statement of such signed by a parent or guardian.

Swine show classification standards

Berkshire:

1. Predominantly black in color
2. Exhibiting Berkshire breed character (i.e. erect ears, white on face and tail, unless tail is docked)
3. 3 of 4 legs must be white (4 legs being white is ideal)
4. Must have white on nose
5. Can have white on face and ears (must not be solid black or white on face, ears must not be solid white)
6. No evidence of formation of a belt or excessive white on body

Chester White:

1. Must be solid white in color
2. Must exhibit Chester White breed character (i.e. down ears and medium size)
3. No colored hairs
4. Any indication of masking will be classed out
5. Pigmentation over the size of a US quarter will be classed out

Duroc:

1. Must be solid red in color
2. Exhibiting Duroc breed character (i.e. down ears)
3. No white or black hairs
4. No white pigmentation
5. Black spots can be no larger than a US quarter

Hampshire:

1. Predominantly black in color with a white belt encircling the body over the shoulders encompassing the front legs
2. Must exhibit Hampshire breed character (i.e. erect ears)
3. Sheath or navel must be black
4. No white above the cap of the hock or white behind the sheath or navel
5. Any white on the nose must not break the brim of the nose
6. Excessive freckling in the belt may be cause for being classed out.

Hereford:

1. Predominantly red in color
2. Must exhibit Hereford breed character (i.e. down ears)
3. Must have white head, ears, and 4 white legs

Landrace:

1. Must be solid white in color
2. Must exhibit Landrace breed character (i.e. large, down ears)
3. No colored hairs
4. Any indication of masking will be classed out
5. Pigmentation over the size of a US quarter will be classed out

Poland China:

1. Predominantly black in color
2. Must exhibit Poland China breed character (i.e. down ears, white on face and tail, unless tail is docked)
3. 3 of 4 legs must be white (4 being white is ideal)
4. Must have white on the nose
5. Can have white on face and ears (must not be solid black or white on face, ears must not be solid white)
6. No evidence or formation of a belt or excessive white on body

Spott:

1. Must be black and white in color
2. Must exhibit Spot character (i.e. down ears)
3. No red hairs
4. Any indication of a belt will be classed out
5. Hogs with solid black faces will be classed out Must be black and white in color.

Yorkshire:

1. Must be solid white in color
2. Must exhibit Yorkshire breed character (i.e. erect ears)
3. No colored hairs
4. Any indication of masking will be classed out
5. Pigmentation over the size of a US quarter will be classed out.

Light Crossbred

1. Hogs with any combination of white, blue, gray, sandy, rusty, orange, red or roan pigmentation or hair.
2. All pigs that do not meet the classifications of any other breeds. (i.e. Tri colored, calico's, blue's etc.)

Dark Crossbred

1. Hogs with any combination of black and white hair or skin pigmentation only.
2. This includes solid black hogs.

Entries

MARKET SWINE CLASSES

1. Market Swine as determined by breed classification and weight.
2. Born & Raised (see rules [Here](#), enter general Market Swine and Born & Raised classes to participate)

AWARDS

Grand & Reserve Champion will be awarded in each Division

Overall Grand & Reserve Market Swine.

Grand & Reserve Champion Born & Raised

MARKET CLASSES DO NOT RECEIVE PREMIUMS

Division: SWINE SHOWMANSHIP

Entry fee: None

See general showmanship rules and awards [Here](#).

SWINE SHOWMANSHIP CLASSES

- Junior
- Intermediate
- Senior

SHEEP

Superintendent: Gracie Burkhart Porter (719) 937-1963

Division: BREEDING SHEEP

Entry Fee: \$5 per head

Breeding Sheep Regulations:

1. All entries are subject to the General Livestock Regulations & Rules.
2. Ages are determined as of January 1st of the show year.
3. Breed divisions will be established as listed below. If there is not a minimum of 5 animals in a breed, it will show in a combination with another breed that does not have 5 breed individuals. The class will be called All Other Breeds.
4. Breeding sheep may be shown shorn, or with not more than 12 months wool growth. WOOL BREEDS MUST show with a normal seasonal fleece length.
5. Classes for breeds and/or divisions will be determined after Check-in is complete.

BREED DIVISIONS:

Breeding Show Ewes:

1. Wool Breeds
2. White Face (Dorset, Dorset Advantage) registered
3. Hair Sheep (Dorper)
4. Registered Hampshire
5. Registered Suffolk
6. All Crossbred and Commercial

Breeding Show Rams

1. Purebred
2. Crossbred

Entries

BREEDING SHEEP CLASSES

Classes set according to breeds available

1. Rams 1 year old & under 2
2. Ram lambs under one year
3. Ewes 1 year old & under 2
4. Ewe lambs under one year

AWARDS

Grand & Reserve Champion Ewe

Grand & Reserve Champion Ram

Premiums: Premiums are paid on classes within each division, as established by the superintendent.

1 st	\$10
2 nd	\$9
3 rd	\$8
4 th	\$7
5 th & down	\$5

No more than 2 premiums will be awarded to an exhibitor under any one class. Premiums will be mailed.

Division: MARKET SHEEP

Entry fee: \$5 per head. No fee for Born & Raised classes.

Market Sheep Regulations:

1. All entries are subject to the General Livestock Regulations & Rules.
2. Market lambs must have been weighed and tagged at the beginning weigh-in in May.
3. Junior market lambs must be spring lambs born on or after December 15, 2024 and be carrying all milk teeth in place. Lambs may be mouthed prior to weigh-in.
4. Lambs must be close shorn (not more than ½ inch wool) and DRY at final weigh in.
5. All market ewe lambs will be required to have individual identification for scrapie premise ID tag. See general rule #23 on male animals. Contact number for the USDA to get scrapie tags. 303-231-5385 extension "0". Tags must be in place before the SLV fair.
6. Market sheep will be judged in weight classes.
7. Lambs under 100 lbs. at final weigh in will show in a feeder class and WILL NOT SELL. To be eligible for the SLV Fair Jr. Market Livestock Sale lambs must gain a minimum of 30 lbs. from beginning weigh in and must weigh a minimum of 100 lbs. Lambs NOT gaining 30 lbs. at final weigh in will be shown in a separate feeder class and WILL NOT SELL.
8. Market lamb exhibitors may use meshed or plastic muzzles at the SLV Fair. The muzzle style must allow lamb to drink. If an exhibitor elects to use a muzzle, they must display a sign explaining to the public why they are doing so.

Entries

MARKET SHEEP CLASSES ** Each Market Sheep Division Grand and Reserve will come back for the Final Drive

1. Market Born & Raised (see rules [Here](#), must enter general Market Sheep and Born & Raised classes to participate)
2. Market Sheep
 1. Other Pure-Bred including Dorset, Dorper and Southdown (Must display proper breed characteristics, but do not have to be registered)
 2. Speckled Face
 3. Crossbred divided into light, medium and heavy weights

AWARDS

Grand & Reserve Champion Market Sheep

Grand & Reserve Champion Born & Raised

MARKET CLASSES DO NOT RECEIVE PREMIUMS

Division: SHEEP SHOWMANSHIP

Entry fee: None

See general showmanship rules and awards [Here](#).

SHEEP SHOWMANSHIP CLASSES

1. Junior
2. Intermediate
3. Senior

MEAT GOATS

Superintendents: Mackenzy Becker (719) 850-8780

Division: PRODUCTION (BREEDING) MEAT GOATS

Entry fee: \$5 per head

Breeding Meat Goat Regulations:

1. All entries in this division are subject to General Livestock Rules.
2. Ages are determined as of January 1st of the show year.
3. Classes without 3 or more entries may be shown individually or combined at discretion of the Superintendent/Judges.
4. Classes will be determined when the entries are completed.
5. No breed classes.

Entries

JUNIOR KIDS CLASSES

1. Doe 0-3 months
2. Doe 3-6 months
3. Doe 6-9 months
4. Doe 9-12 months
5. Buck 0-3 months
6. Buck 3-6 months
7. Buck 6-9 months
8. Buck 9-12 months

SENIOR CLASSES

1. Doe 12-18 months
2. Doe 18-24 months
3. Doe 24-36 months
4. Doe 37+ months
5. Buck 12-18 months

GROUP CLASS

- Production of Doe, with current year's offspring

AWARDS

Champion & Reserve Champion Production Meat Doe

Champion & Reserve Champion Production Meat Buck

Premiums: Premiums are paid on classes within each division, as established by the superintendent.

1 st	\$10
2 nd	\$9
3 rd	\$8
4 th	\$7
5 th & down	\$5

No more than 2 premiums will be awarded to an exhibitor under any one class. Premiums will be mailed.

Division: MARKET GOATS

Entry fee: \$5 per head. No fee for Born & Raised classes.

Market Goat Regulations:

1. All entries are subject to the General Livestock Regulations & Rules.
2. Market Goats must be born after December 15, 2024 and be carrying all milk teeth in normal positions. Goats showing either or both of the first pair of permanent incisors will be disqualified.
3. Fully dehorned goats are preferred, however, if a goat has horns then ends must be tipped and completely blunt. No sharp points allowed. If a horn is tipped properly, you should be able to rest a dime on top of it.
4. Market Goats will be judged in weight classes.
5. To be eligible for the SLV Fair Jr. Market Livestock Sale, goats must gain a minimum of 20 lbs. from the beginning weigh in. Goat minimum weight is 60 lbs. Goats under 60 lbs. at final weigh in will be shown in a feeder class and WILL NOT SELL.
6. Goats should be closely clipped (3/4 inch) with no blocking before weigh-in and they must be shown with a collar or halter (no pinch collars, pronged chains, or training collars allowed).
7. Market Goat exhibitors may use meshed or plastic muzzles at the SLV Fair. The muzzle style must allow the goat to drink water. If an exhibitor elects to use a muzzle, they must display a sign explaining to the public why they are doing so.
8. All market does will be required to have individual identification for scrapie premise ID tag. See general rule #23 on male animals. Contact number for the USDA to get scrapie tags. 303-231-5385 extension "0". Tags must be in place before the SLV fair.

Entries

MARKET GOAT CLASSES

1. Market Goats
2. Born & Raised (see rules [Here](#), enter general Market Goat and Born & Raised classes to participate)

AWARDS

Grand & Reserve Champion Market Goat

Grand & Reserve Champion Born & Raised

MARKET CLASSES DO NOT RECEIVE PREMIUMS

Division: GOAT SHOWMANSHIP

Entry fee: None

See general showmanship rules and awards [Here](#).

GOAT SHOWMANSHIP CLASSES

1. Junior
2. Intermediate
3. Senior

DAIRY GOATS

Superintendent: Sam Olsen (

Division: DAIRY GOATS

Entry fee: \$5 per animal for individual classes and \$5 per class for group classes

Dairy Goat Regulations:

1. All entries in this class are subject to General Livestock Regulations & Rules.
2. Ages are determined as of January 1st of the show year.
3. All goats over three months of age must have been disbudded or dehorned before exhibiting. Goats with horns will be disqualified.
4. Dairy goats do not have to be registered.
5. White costume is preferred for exhibitors with 4-H or FFA accessories as applicable.
6. Lead equipment should consist of a collar or small link chain, properly fitted.
7. Milk does are shown with full udder. Does entered in milking competition must be milked out after the show under the supervision of the Dairy Goat Superintendent.
8. No bucks or wethers will be shown.
9. Breed divisions and age lots will be established as necessary. Classes without three or more entries may be shown individually or in combined classes at the discretion of the superintendent and/or judge(s).
10. All decisions of the superintendents and judge(s) are final.

Entries

DAIRY GOAT CLASSES (Divisions according to breeds available)

Individual Classes

1. Jr. Kid Born May to July
2. Int. Kid Born March to April
3. Sr. Kid Born January to February
4. Yearling (non-milking) 1 year old and under
5. Milking Does 1 year & under 2
6. Milking Does 2 years & under 3
7. Milking Does 3 years & under 5
8. Milking Does 5 years & older

Group Classes

1. Get of Sire - group of 3 does by one sire
2. Dam & Daughter Class - Daughter & Dam in milk
3. Dairy Herd - at least 4 does in milk

AWARDS

For each division (class):

Grand & Reserve Champion – Jr. Doe by Breed

Grand & Reserve Champion – Sr. Doe by Breed

Best in Show Jr. Doe

Best in Show Sr. Doe

Best Udder of Show

Premiums: Premiums are paid on classes within each division, as established by the superintendent.

1 st	\$10
2 nd	\$9
3 rd	\$8

4 th	\$7
5 th & down	\$5

No more than 2 premiums will be awarded to an exhibitor under any one class. Premiums will be mailed.

MILKING COMPETITION

Entry fee: None

Judging: Sunday after Dairy Goat judging

1. All milking does entered in the SLV Fair are encouraged to compete.
2. Only 1 doe per exhibitor is allowed to compete.
3. Goats entered in the competition shall be on the premises by 11:00 am, Sunday, August 4 and milked dry by 1:00 pm. The Dairy Goat Superintendent shall check each doe to verify compliance with the preliminary milk out requirement. Refusal by the owner to comply with the milk out rule will eliminate the doe from the competition.
4. The exhibitor shall certify that the doe has not received Thyroprotein or any product which states on the label that it will increase milk production.
5. Milk must be weighed on a legal dairy type scale, recorded in pounds and tenths of pounds. Weighing will be done by the Superintendent or their representative.
6. Points will be awarded for the quantity of the milk for the period of time since the last kidding as follows:
 1. For each pound of milk, one point figured to the tenth pound.
 2. For each complete 10 days the goat has been in production since last kidding, 1-tenth of a point, with a maximum of 3.6 points.

AWARDS

SLV Fair High-Point Milker

Division: DAIRY GOAT SHOWMANSHIP

Entry fee: None

Judging: Following the Dairy Goat Show.

See general showmanship rules and awards on [Here](#).

DAIRY GOAT SHOWMANSHIP CLASSES

1. Junior
2. Intermediate
3. Senior

RABBITS

Superintendent: Crystal Voss (719) 850-0343

Rabbit Regulations:

1. All entries are subject to the General Livestock Regulations & Rules.
2. Rabbits will be allowed only four (4) entries per species.
3. Breed divisions will be established as necessary.
4. All decisions of the superintendent and judge(s) are final.
5. All rabbits must be tattooed before Fair entries are due. Contact the Extension office for more information on tattoo dates and procedures.
6. Market rabbits must be tattooed at the official tattoo day.

Division: BREEDING RABBITS

Entry fee: \$2 per head

Entries

BREEDING RABBIT CLASSES

Note: This department will be conducted in the format of an ARBA rabbit show, with the criteria based upon ARBA Standards.

1. Junior Doe (under six months & by breed)
2. Senior Doe (over six months & by breed)
3. Junior Buck (under six months & by breed)
4. Senior Buck (over six months & by breed)

AWARDS

Each Breed Class

Best of Show & Reserve Best of Show Breeding Rabbit

Premiums: Premiums are paid on classes within each division, as established by the superintendent.

1 st	\$10
2 nd	\$9
3 rd	\$8
4 th	\$7
5 th & down	\$5

No more than 2 premiums will be awarded to an exhibitor under any one class. Premiums will be mailed.

Division: MARKET RABBIT

Entry fee: \$2 per head

Non-sale rabbits must be checked out by Thursday, August 8, 2025, 9:00 pm.

MARKET RABBIT CLASSES

1. Meat Pens:
 - 3 rabbits of the same breed & variety.
 - Not over 70 days of age
 - Minimum weight 3 lbs 8 oz and Maximum weight 5 lbs 8 oz per rabbit.
2. Single Fryer:
 - Not over 70 days of age

- Minimum weight 3 lbs 8 oz and Maximum weight 5 lbs 8 oz per rabbit.
- Single fryers may not be part of a meat pen.

3. Rabbits will be allowed only four (4) entries per species.

**Rabbits over 5.5 lbs. will be shown in overweight class and will not sell.*

AWARDS

Grand & Reserve Champion Market Rabbit

MARKET CLASSES DO NOT RECEIVE PREMIUMS

Division: RABBIT SHOWMANSHIP

Entry fee: None

Judging: Following the Rabbit Show.

See general showmanship rules and awards [Here](#).

RABBIT SHOWMANSHIP CLASSES

1. Junior
2. Intermediate
3. Senior

POULTRY

Superintendent: Christine Davis (719) 580-2474

Poultry Regulations:

1. All entries are subject to the General Livestock Regulations & Rules.
2. Fowl will be allowed only four (4) entries per species.
3. Breed and species divisions will be established as necessary. Classes without three or more entries may be shown individually or in combined classes at the discretion of the superintendent and/or judges.
4. All entries must designate production, exhibition, or market classes and the exhibitor must be enrolled in the corresponding project. A member who has met all other market project requirements (such as meat quality assurance) and is enrolled in duck or geese projects will be allowed to exhibit market waterfowl.
 - To exhibit in the exhibition show, members must be enrolled in Fowl- Show birds, Breeding Chickens, Breeding Turkeys, Duck or Geese projects.
 - To exhibit in the egg production show, members must be enrolled in Breeding Chickens, Breeding Turkey, Duck or Geese projects.
 - To exhibit in the exotic birds show, members must be enrolled in Fowl-Show birds.
5. Poultry exhibited in individual lots may also be exhibited in the production class.
6. All Breeding, egg production & exhibition animals must be owned by exhibitor by May 1 of current year.
7. A “cock” or “hen” is a bird hatched prior to January 1 of the show year. “Cockerel” and “pullet” are birds hatched after January 1 of the show year.
8. All ducks, geese and turkeys must have been hatched in the current show year.
9. All market animals must have been hatched after January 1, of the show year.
10. The exhibitor must own breeding Poultry, Egg Production Poultry, and Exhibition Poultry by May 1, 2025. Exhibitors must prove ownership, by bill of sale or registration papers, if requested by the Superintendent. Misrepresentation of ownership, age, or any facts relating thereto is prohibited.
11. The Exhibitor must own Market Turkeys and Waterfowl by May 15, 2025.
12. The Exhibitor must own Market Chickens by June 15, 2025.
13. Decisions of the superintendent and judges are final.
14. All poultry must be banded on banding day, please contact the Extension office or Superintendent for more information on banding dates & procedures.

Division: BREEDING POULTRY

Entry fee: \$2 per head

Entries

BREEDING POULTRY CLASSES

Classes according to breeds available

1. Pullet
2. Cockerel
3. Hen
4. Cock
5. Exhibition-Old Trio (2 hens, 1 cock)
6. Exhibition-Young Trio (2 pullets, 1 cockerel)
7. Production Class (3 pullets of the same breed) all breeds compete together
8. Turkey-Young Tom
9. Turkey-Young Hen
10. Turkey-Old Tom
11. Turkey-Old Hen

12. Exotic Birds
13. Water Fowl-Drake
14. Water Fowl-Duck
15. Water Fowl-Goose

AWARDS

Grand & Reserve Large Breeds
Grand & Reserve Bantam Breeds
Grand & Reserve Turkey
Grand & Reserve Duck
Grand & Reserve Goose
Grand & Reserve Water Fowl
Grand & Reserve Land Fowl
Best of Show
Reserve of Show

Premiums: Premiums are paid on classes within each division, as established by the superintendent.

1 st	\$10
2 nd	\$9
3 rd	\$8
4 th	\$7
5 th & down	\$5

No more than 2 premiums will be awarded to an exhibitor under any one class. Premiums will be mailed.

Division: MARKET POULTRY

Entry fee: \$2 per head

MARKET POULTRY CLASSES

1. Broiler Class (3 young birds up to 5 lbs. each) judged for meat qualities only
2. Single Fryer
3. Market Turkey (young single turkey of either sex) judged for meat qualities only
4. Market Water Fowl

AWARDS

Grand & Reserve Champion Broiler Class

Grand & Reserve Market Turkey

Grand & Reserve Market Water Fowl

MARKET CLASSES DO NOT RECEIVE PREMIUMS

Division: POULTRY SHOWMANSHIP

Entry fee: None

Judging: Following the Poultry Show.

See general showmanship rules and awards [Here](#).

POULTRY SHOWMANSHIP CLASSES

1. Junior
2. Intermediate
3. Senior

DOG

Superintendent: Amber Garrison

Entry Fees: \$2 per class No fee for showmanship.

4-H Dogs:

Premiums are paid on Junior, Intermediate and Senior Showmanship Classes.

1 st	\$10
2 nd	\$9
3 rd	\$8
4 th	\$7
5 th & down	\$5

Premiums will be mailed.

Dog Regulations

1. Refer to 2025 Colorado State Fair 4-H Contest Requirements for Dog Trials pages 14-45.
2. If a member's dog does not receive a Rabies inoculation as required by the State of Colorado or a Parvo Virus shot as required by Fair Officials for all 4-H Dog Project participants, a certificate from the member's veterinarian stating the reason for these shots not being given must accompany the Dog ID.
3. Dogs must be on a leash at all times except when performing exercises off leash in the show ring.
4. Additional vaccinations may be required when necessary.
5. 4-H Dog Show officials and/or staff can and will dismiss any entrant or his/her family from the show for any mistreatment of dogs entered in this show. If a question should arise as to what constitutes "mistreatment," 4-H staff and/or officials will meet to decide appropriate action in each case.
6. Any negative behavior on the part of the exhibitor, family members or leaders directed toward any official or judge will result in disqualification and awards forfeited. If there is a question as to the rules or the judging of a class, adult family members or leaders must approach the Superintendent and not the judge. The Superintendent will then take the question to the judge(s) if warranted.
7. Dogs which are deemed to be a danger to people or other dogs can and will be removed from the show grounds and all classes forfeited. This will be determined by the Superintendent.
8. Protests must be submitted in writing and presented to the Superintendent within 24 hours after judging is announced. Protests will be handled by the Fair board.
9. All entrants will be responsible for cleaning up after their dogs. Failure to do so can be a basis for dismissal from the 4-H Dog Show and/or forfeiture of any placing.
10. Show management will have final decision authority. If needed, show management may request assistance with arbitration from a committee comprised of the superintendent, the judge(s) (if willing), and the leader and/or agent from the county involved (if present).
11. The Colorado State 4-H Dress Code is to be followed by all 4-H members, as well as adult leaders, advisors, and chaperones at all Colorado State 4-H sponsored events. Please check out the Colorado State 4-H Dress Code at: www.colorado4h.org. In addition to the State Dress Code please adhere to the 4-H Dog Handlers Dress Code. **For more detailed information check out the Dog Resource Handbook.**
12. No dogs are allowed beyond the immediate vicinity of the Indoor building.
13. Entrants will pick up their armbands the day of the show. Each exhibitor will have the same armband number for all dogs he/she is exhibiting.
14. No set-up will be allowed anywhere near the rings. Allowable set-up areas will be designated and no one will be allowed to set up in any other areas. Spectators must stay at least ten feet from the ring.
15. Dog project members must complete record books prior to the fair. Record books are due by 4:30 pm on Monday, July 21, 2025 at the CSU Extension Office in Monte Vista. Record books will be scored prior to the

show and these scores will be used in calculations for the Supreme award.

The general age groups for Dog Project are:

1. Junior 8-10 years
2. Intermediate 11-13 years
3. Senior 14-18 years

Age is determined by the member's age as of December 31, 2024.

EXHIBITOR ELIGIBILITY RULES:

1. Member must be enrolled in the 4-H Dog Project.
2. All exhibitors must have complied with each county's eligibility requirements.
3. The member must own his/her project dog individually or partnership with immediate family members or guardians during the complete duration of the project year. The member must provide the majority of care for the dog(s). Entrants will be encouraged to use the Animal Care and Housing Form for Colorado 4-H Livestock Projects.
4. To qualify for State Fair exhibitors must achieve at least one qualifying score in each class of exhibition. Qualifying scores are 170 and above in Obedience and Showmanship and 70 and above in Rally. An acceptable record book must also be done and meet all guidelines required by the county.
5. Each exhibitor may exhibit a different dog in obedience, showmanship, and rally provided they meet qualifications (refer to rule 3). A member may be entered in multiple Obedience or Rally classes with different dogs, but each member may only enter Showmanship once.

DOG ELIGIBILITY RULES:

1. All dogs must have a Dog ID form on file with the CSU Extension Office by May 1, 2025. This form is to be completed electronically thru the 4HOnline system.
2. After once earning a qualifying score in competition as a 4- H project dog in Obedience or Rally, that same dog is no longer eligible for exhibition in that same division at any following fair except Grad Novice, Open, Grad Open and Utility Obedience classes and Rally Advanced-Excellent class.
3. A dog with any other rally or obedience title from any national dog association (AKC, UKC, CKC, ASCA etc.) is disqualified from entering the class for which the degree was awarded, or any lower class, except if that title was won less than four months before the fair. If the title was won less than four months before the 4-H State Dog Trial the dog is eligible for entry in the same class. Rule 2, above, takes precedence over this rule.
4. Bitches that are in heat, obviously pregnant, or lactating will not be allowed to compete in any classes.
5. Dogs in obvious pain from a previous illness or injury shall not be shown. If a dog is injured at a show, that dog will be excused from the ring. Consideration of a dog's physical disability needs to be addressed between the handler and project leader before starting the project. An approved veterinarian or qualified veterinary technician's decision on doubtful cases will be accepted as final.
6. Dates of approved current and effective vaccination of the dog for rabies and parvo-virus must be provided on the entry form. Each entrant is also required to enter this info into the state Dog ID electronically on the 4HOnline system and have it submitted by May 1, 2025.
7. If the qualified dog in Showmanship is injured or in season, a replacement may be used at the approval of the Superintendent. The replacement dog must fulfill all of the "dog eligibility requirements", must be carried in the member's record book, and must have a health certificate on file with the county office.
8. No dog with a physical or mental condition that would significantly impair their performance may participate. Some examples of these include (but are not limited to) hip dysplasia, disc problems, severely slipped stifles, shoulder problems, or being overweight. All 4-H'ers are highly encouraged to consult their veterinarian before beginning ability training. All dogs competing in agility are required to have medical certification form signed by a veterinarian. A judge, superintendent or the county trainer at state and county events will have the authority to stop the performance of any dog whose soundness

they question.

Obedience & Showmanship

The SLV Fair 4-H Dog Show is a 4-H show. As such, 4-H youth development principles are of primary importance. Show rules and guidelines are modeled after AKC rules.

Exhibit requirements and rules for Obedience scoring are available from the SLV Area Extension Office.

Ribbon Awards

Ribbons will be awarded to each exhibitor on the following basis:

Obedience

Blue: 170 or more points earned, provided each class exercise received 50 percent or more of the maximum point value of that exercise.

Red: 140 to 169 points or those who earned more but did not qualify for a blue ribbon.

White: 139 or fewer points earned.

Showmanship

Blue: 170 or more points earned **Red:** 140 to 169 points earned **White:** 139 or fewer points earned

Rally

Blue: 70-100 points earned

Red: 50-69 points earned

White: 49 or fewer points earned

Other Awards:

Prizes and ribbons will be awarded to the member scoring the highest point total in the following classes:

Obedience

Overall Grand and Reserve Grand Champions

1. Sub Novice A, B Obedience
2. Sub Novice C (1st and 2nd year) Obedience
3. Novice A & B Obedience
4. Grad Novice Obedience
5. Advanced Obedience

Showmanship

Overall Grand and Reserve Grand Champions

1. Junior Novice and Open Showmanship
2. Intermediate Novice and Open Showmanship
3. Senior and Open Showmanship.

Rally

Overall Grand and Reserve Grand Champions

1. Rally Novice A & B
2. Rally Advanced A & B
3. Rally Excellent A & B
4. Rally Advanced/Excellent A & B

Agility Rules

The State 4-H Dog Agility Rules can be found at under Contest Requirements:

<http://co4h.colostate.edu/program-areas/state-fair-information/>

Agility Obstacles

The State 4-H Dog Agility Rules can be found at under Contest Requirements:

<http://co4h.colostate.edu/program-areas/state-fair-information/>

Agility Waiver

The State 4-H Dog Agility Rules can be found at under Contest Requirements:

<http://co4h.colostate.edu/program-areas/state-fair-information/>

Supreme Overall

Supreme Overall Grand Champion Supreme Overall Reserve Champion

Points will be totaled for Supreme on the following:

1. Record book 100 points
2. Showmanship 200 points
3. Obedience 200 points
4. Rally 100 points

Division: DOG OBEDIENCE

BEGINNER NOVICE OBEDIENCE CLASSES

1. Puppy Class
2. Beginner Novice A
3. Beginner Novice B
4. Beginner Novice C-1st year
5. Beginner Novice C-2nd year

NOVICE OBEDIENCE CLASSES

1. Novice A
2. Novice B

GRADUATE NOVICE OBEDIENCE CLASSES

1. Pre-Graduate Novice A
2. Pre-Graduate Novice B
3. Graduate Novice A
4. Graduate Novice B

ADVANCED OBEDIENCE CLASSES

1. Open A
2. Open B
3. Graduate Open A
4. Graduate Open B
5. Utility A
6. Utility B

VETERANS DIVISION

1. Novice Veterans
2. Pre-Graduate Novice Veterans
3. Graduate Novice Veterans
4. Open Veterans
5. Graduate Open Veterans
6. Utility Veterans

Division: DOG SHOWMANSHIP

SHOWMANSHIP CLASSES

1. Junior Novice Showmanship (8-10) *
2. Junior Open Showmanship (8-10)
3. Intermediate Novice Showmanship (11-13)*
4. Intermediate Open Showmanship (11-13)
5. Intermediate Advanced Showmanship (11-13)
6. Senior Novice Showmanship (14 & over) *
7. Senior Open Showmanship (14 & over)
8. Senior Advanced Showmanship
9. Master Showman (Int. & Sr. - previous Grand or Reserve Champion winners at the Colorado State Fair)

**Denotes first year members only*

Division: DOG RALLY

RALLY CLASSES

- | | |
|-------------------------|--------------------------------|
| 1. Rally Novice A | 8. Rally Excellent B |
| 2. Rally Novice B | 9. Rally Advanced/Excellent A |
| 3. Rally Intermediate A | 10. Rally Advanced/Excellent B |
| 4. Rally Intermediate B | 11. Rally Masters A |
| 5. Rally Advanced A | 12. Rally Masters B |
| 6. Rally Advanced B | 13. Rally Team |
| 7. Rally Excellent A | |

Division: DOG AGILITY CLASSES

- | | |
|------------------------------------|---------------------------------|
| 1. Foundation Standard | 8. Foundation Jump |
| 2. Novice Standard - Regular | 9. Novice Jump - Regular |
| 3. Novice Standard - Veteran | 10. Novice Jump - Veteran |
| 4. Intermediate Standard - Regular | 11. Intermediate Jump - Regular |
| 5. Intermediate Standard - Veteran | 12. Intermediate Jump - Veteran |
| 6. Advanced Standard - Regular | 13. Advanced Jump - Regular |
| 7. Advanced Standard - Veteran | 14. Advanced Jump - Veteran |

HORSE

Overall Superintendent: Krista Culver (580) 618-4076

Ranch Horse: Leah Clark

Gymkhana: Jill Francis

Exhibitors must check in with Overall Horse Superintendent Krista Culver at set up to be eligible for awards.

Entry fee: \$2 per horse per class, plus \$15 stock fee per exhibitor per cattle class. No fee for showmanship & written exam.

Judging:

Horse Show: All Western classes will show first, followed by English classes.

Working Ranch Horse

Gymkhana

Written exam:

The **2025 Horse Exhibitors Test** will be given on THURSDAY, JULY 31st from noon to 1 pm at the Fairgrounds.

Horse exhibitors who cannot take the test on this date may take the test on WEDNESDAY July 30, from 4-7pm at the SLV Extension Office.

Horse Awards Ceremony Following each portion: Show Day, Ranch Horse, and Gymkhana.

AWARDS

Showmanship: Grand & Reserve Champion for Novice, Junior, Intermediate, Senior

Western: Grand & Reserve Champion for Novice, Junior, Intermediate, Senior

English: Grand & Reserve Champion for Novice, Junior, Intermediate, Senior

Working Ranch Horse: Grand & Reserve Champion for Junior, Intermediate, Senior

Gymkhana: Grand & Reserve Champion for Junior, Intermediate, and Senior.

*Grand and Reserve awards will be calculated using the highest scores from totaling the placement points from all classes entered in each Division. Exhibitors must compete in Showmanship to be eligible for Grand and Reserve Western and English Awards. Exhibitors must complete the written exam to be eligible for all Grand and Reserve awards. Additionally, the written exam scores will be used as tiebreakers in all Divisions. In the event of a tie on the written test, Showmanship scores will be used as a secondary tie breaker. Western Grand & Reserve will include showmanship.

HORSE REGULATIONS:

1. **Exhibitors must be a Level II rider or above to participate in Gymkhana.**
2. Exhibitors in the SLV Fair Junior Horse Show must be enrolled in a 4-H or FFA Horse Project.
3. The Colorado 4-H Horse Rulebook establishes the regulations and procedures followed in the SLV Fair Junior Horse Show. Refer to this Rulebook for guidelines, the Extension Office has copies available for sale. Any rules listed here take precedence over the Horse Rulebook.
4. An exhibitor in the SLV Fair Junior Horse Show may exhibit up to three horses. In order to be eligible for a Showmanship Award, or High Point Award, the Showmanship horse must be used in at least one other class during any one of the days of the Horse Show.
5. Riders must have and carry a breakaway rope for all classes that require roping. For classes providing a rope to drag a log, the rider should not have a rope tied to their saddle.
6. Each exhibitor must submit Horse ID forms to the Extension Office for all their project horses by May 1, 2025. These forms are to be submitted electronically using the 4HOnline system. All horses entering 4-H horse shows must be declared a project horse by this date. Horse hardship substitutions at 4-H horse shows can only be a horse with a Horse ID on file by May 1, 2025. The SLV Fair Board has the authority to deal with hardship cases.
7. No stallions or wet mares can be shown in the SLV Fair Junior Horse Show.
8. No horse or pony may be exhibited in any class at the SLV Fair Junior Horse Show if it has been administered, in any manner, a forbidden substance as defined by the Colorado 4-H Horse Rulebook.
9. No bareback riding, riding double, or riding with halters will be allowed.
10. Exhibitors, parents, or their agents will not be permitted to approach Judges directly, unless invited to do so at Exhibitors meetings before the Show or Class. All questions or comments must be directed to the Horse Superintendent.
11. Parents, leaders, trainers, or other adults are not allowed to ride an exhibitor's horse at any time while at the SLV Fair Junior Horse Show.
12. Novice (first year) may enter only classes designated: Showmanship, Horsemanship, Hunt Seat Equitation (not to jump), Trail, and Written exam. Novice will be allowed to use either one or two hands on the reins in all their riding classes regardless of the age of the horse or bit used. However, they must use the same method throughout an entire class (switching from one to two handed or vice versa during the class is not allowed) Whether riding one or two handed, exhibitors must use a safe and correct method of holding the reins as described in the Colorado 4-H Horse Show Rulebook (pg. 13&14).
13. The Novice Trail event will include only 4 obstacles.
14. Decisions of the SLV Fair Junior Horse Show Management/ Judges are final.
15. In age groups 11-13 and 14-18, exhibitors may be tested on Level I and II skills in any class.
16. All exhibitors must wear proper attire for their division, as defined by the Colorado 4-H Horse Rulebook. See the 4-H Horse Rulebook for specific required/prohibited gear. ASTM/SEI approved safety helmet with harness securely fastened is required for Gymkhana events. Per the Colorado 4-H Horse Show Rulebook the dress code for the SLV 4-H Horse Show is as follows:
 1. Western (and Gymkhana) Division, Section 90.B: 'Western hat, Western or cowboy boots, belt and long-sleeved, full-length shirt (chest and midriff covered) required. Any exhibitor may wear certified protective headgear in any division or class without penalty. A certified equestrian helmet with safety harness fastened in place is required in gymkhana events, activities and practice sessions.'
 2. Working Ranch Horse Division, Section 300.E: "Rider shall wear western style clothing that is well fitted and work-like in appearance. Shirts must be long sleeved, full length (chest and midriff covered), long pants, western riding boots, belt, and cowboy hat (or helmet). Optional attire: gloves, ties, chaps, chinks, vest, jackets, raincoat or scarf, safety helmet with harness."
 3. English Division, Section 352.A: "Riders should wear suitable hunt seat attire consisting of a coat of any tweed or melton for hunting (conservative wash jackets in season); breeches or jodhpurs; appropriate boots; and a hunt cap is mandatory. A certified equestrian hunt cap with safety harness fastened in place is required in over fences classes." Or Section 354.A: "Riders should wear suitable attire consisting of a conservative-colored hunt or dressage coat, light colored breeches, and a hunt or dressage cap."
17. In order to be considered eligible for English division classes over fences (Hunter Hack and Hunt Seat Equitation Over Fences) riders must meet the following requirements:

1. For Hunter Hack: Be a Level II English rider,
2. For Hunt Seat Equitation Over Fences: Must be a Level II English rider to compete, no exceptions.

Entries

Division: SHOWMANSHIP

1. Junior (ages 8 to 10, English or Western)
2. Intermediate (ages 11 to 13, English or Western)
3. Senior (ages 14 to 18, English or Western)
4. All Novice

For Round Robin Showmanship information see the Livestock section of this book, [Here](#).

Division: ENGLISH EVENTS

HUNT SEAT EQUITATION NOT TO JUMP

1. Junior (ages 8 to 10)
2. Intermediate (ages 11 to 13)
3. Senior (ages 14 to 18)
4. All Novice

HUNT SEAT EQUITATION OVER FENCES*

1. Junior Level II (ages 8 to 10)
2. Intermediate Level II (ages 11 to 13)
3. Senior Level II (ages 14 to 18)

HUNTER HACK*

1. Junior (ages 8 to 10)
2. Intermediate (ages 11 to 13)
3. Senior (ages 14 to 18)

ENGLISH SHOW HACK

1. Junior (ages 8 to 10)
2. Intermediate (ages 11 to 13)
3. Senior (ages 14 to 18)

ENGLISH CONTROL

1. Intermediate (ages 11 to 13)
2. Senior (ages 14 to 18)

***Indicates a class over fences, see rule 17 above for additional requirements to enter these classes.**

Division: WESTERN EVENTS

HORSEMANSHIP

1. Junior (ages 8 to 10)
2. Intermediate (ages 11 to 13)
3. Senior (ages 14 to 18)
4. All Novice

REINING

1. Junior (ages 8 to 10)
2. Intermediate (ages 11 to 13)
3. Senior (ages 14 to 18)

WESTERN RIDING

1. Intermediate (ages 11 to 13)
2. Senior (ages 14 to 18)

WESTERN TRAIL

1. Junior (ages 8 to 10)
2. Intermediate (ages 11 to 13)
3. Senior (ages 14 to 18)
4. All Novice

Division: WORKING RANCH HORSE

RANCH HORSEMANSHIP

1. Junior (ages 8 to 10)
2. Intermediate (ages 11 to 13)
3. Senior (ages 14 to 18)

RANCH TRAIL

1. Junior (ages 8 to 10)
2. Intermediate (ages 11 to 13)
3. Senior (ages 14 to 18)

INDIVIDUAL COW WORK

1. Junior (ages 8 to 10)
2. Intermediate (ages 11 to 13)
3. Senior (ages 14 to 18)

Division: GYMKHANA

BARREL RACING

1. Junior (ages 8 to 10)
2. Intermediate (ages 11 to 13)
3. Senior (ages 14 to 18)

POLE BENDING

1. Junior (ages 8 to 10)
2. Intermediate (ages 11 to 13)
3. Senior (ages 14 to 18)

KEYHOLE RACE

1. Junior (ages 8 to 10)
2. Intermediate (ages 11 to 13)
3. Senior (ages 14 to 18)

FLAG RACE

1. Junior (ages 8 to 10)
2. Intermediate (ages 11 to 13)
3. Senior (ages 14 to 18)

GOAT TYING

1. Junior (ages 8 to 10)
2. Intermediate (ages 11 to 13)
3. Senior (ages 14 to 18)

BREAK-AWAY ROPING

1. Junior (ages 8 to 10)
2. Intermediate (ages 11 to 13)
3. Senior (ages 14 to 18)

Division: WRITTEN EXAM

1. Junior (ages 8 to 10)
2. Intermediate (ages 11 to 13)
3. Senior (ages 14 to 18)
4. All Novice

The San Luis Valley Fair Board would like to thank all Sponsors and Volunteers of the 2025 SLV Fair.

Without your help and support we would not have this great opportunity for our youth!

We encourage you to support the businesses & individuals that support our 4-H & FFA members!

WWW.SLVFAIR.COM

Thank you once again to our Gold & Silver Sponsors

