



# **POWERING THE REMOTE** **SUSTAINABLE SOLUTIONS IN** **OFF-GRID ENVIRONMENTS**





THE CHALLENGE

# POWER IN ISOLATION

Remote sites face rugged terrain,  
harsh weather, and no access to  
power grids.





THE SOLUTION

# SOLAR + WIND ENERGY

Harnessing nature to power our  
network- reliably, year-round





# LOW NOISE, NO FUMES, NO FOOTPRINT

**Sustainable design protects the natural world while powering vital communications**

## **Zero Emissions**

**No greenhouse gases, no fuel deliveries, no spill risk.**

## **Quiet Operation**

**No generator hum—just clean air and silence.**

## **Wildlife-Safe**

**Designed to coexist with nature. No disruption to habitats.**





FROM MOUNTAINTOPS TO COASTLINES

# OUR ENERGY SYSTEMS ADAPT





TOWER SITES

# REAL WORLD INSTALLATIONS





# OUR SITES

EACH COMPONENT DESIGNED FOR AUTONOMY, DURABILITY, AND UPTIME

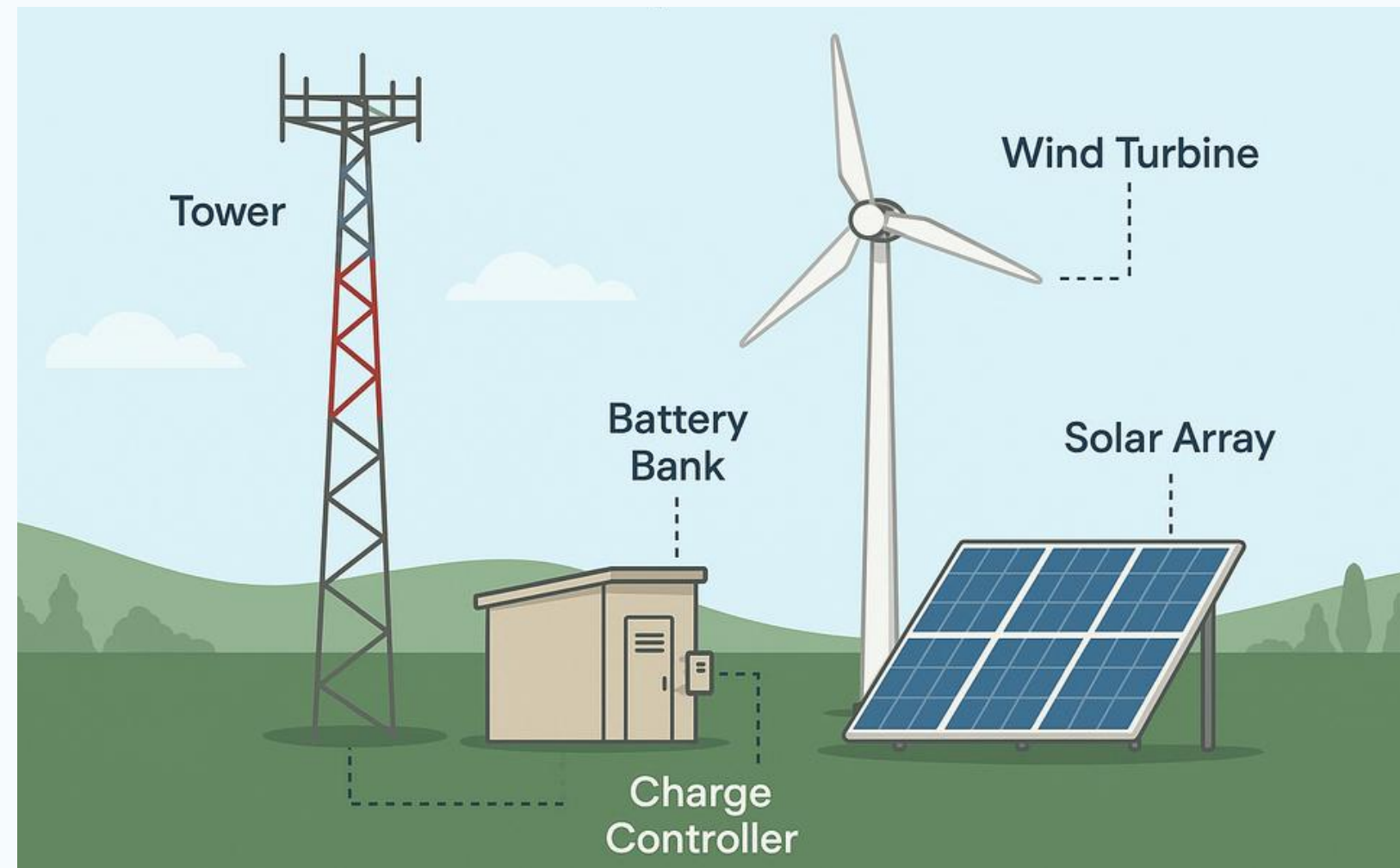
**BUILDING**

**BATTERY**

**TOWER**

**SOLAR PANELS**

**WIND TURBINE**



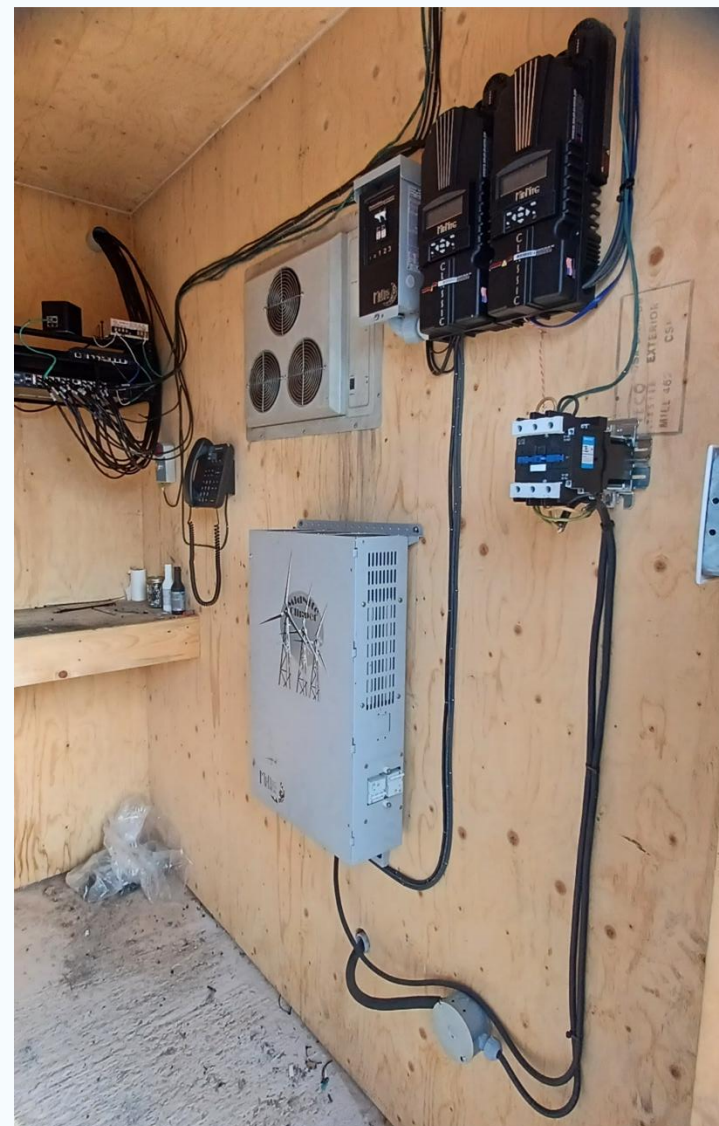


TOWER SITES

# Anatomy of a building



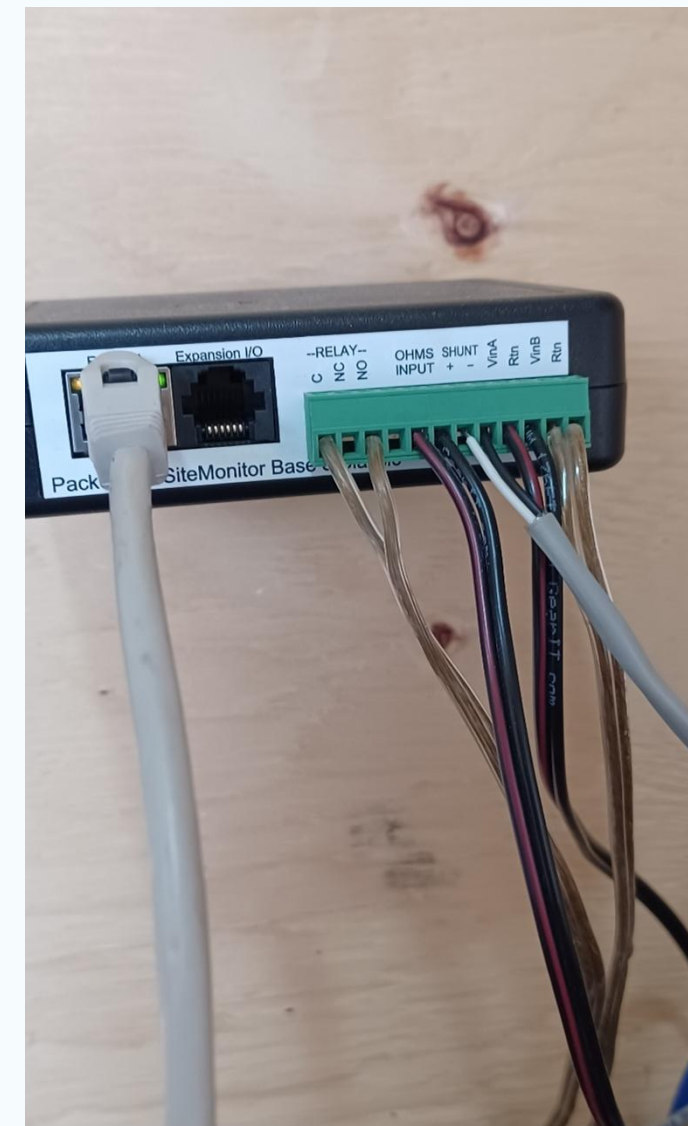
**BATTERY BANK**



**RECTIFIER AND DUMP  
LOAD CONTROLLER**



**FUEL TANK AND  
GENERATOR**



**PACKET FLUX**



**BATTERY CHARGER**



TOWER SITES

# Anatomy of a tower



GUY-WIRE



FRONT OF SOLAR PANEL



REAR OF SOLAR PANEL



TOWER & WIND TURBINE







# GET IN TOUCH WITH US

FOR ADDITIONAL  
INFORMATION



## GREAT NORTHERN WIRELESS

HIGH SPEED INTERNET SERVICE



COMPANY ADDRESS

3 SPRUCE STREET, DEER LAKE, NL



PHONE NUMBER

709-391-9191



EMAIL ADDRESS

[INFO@GREATNORTHERNWIRELESS.CA](mailto:info@greatnorthernwireless.ca)



THANK YOU

