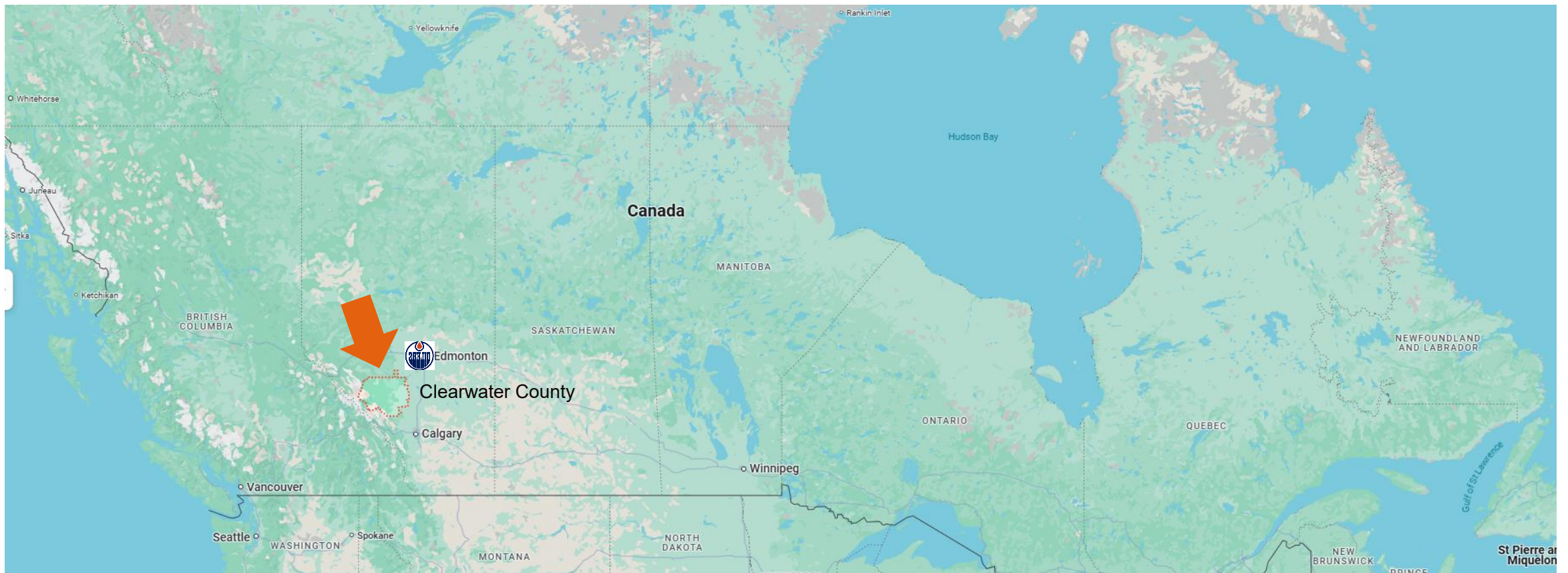




Clearwater County  
**Broadband**

## Program Overview - CRRBC

June 11, 2025



- 12, 278 residents
- 18,691 sq kms
- ~4,800 occupied private dwellings

## Project Highlight - 2023



 Municipality

## Clearwater County

Provide strategic advisory services, engineering design and project management.

- Design and permitting services for 215 kms of fibre optic backbone
- Develop grant applications and manage grant programs
- Facilitated outreach to internet service providers to develop partnerships for open access network





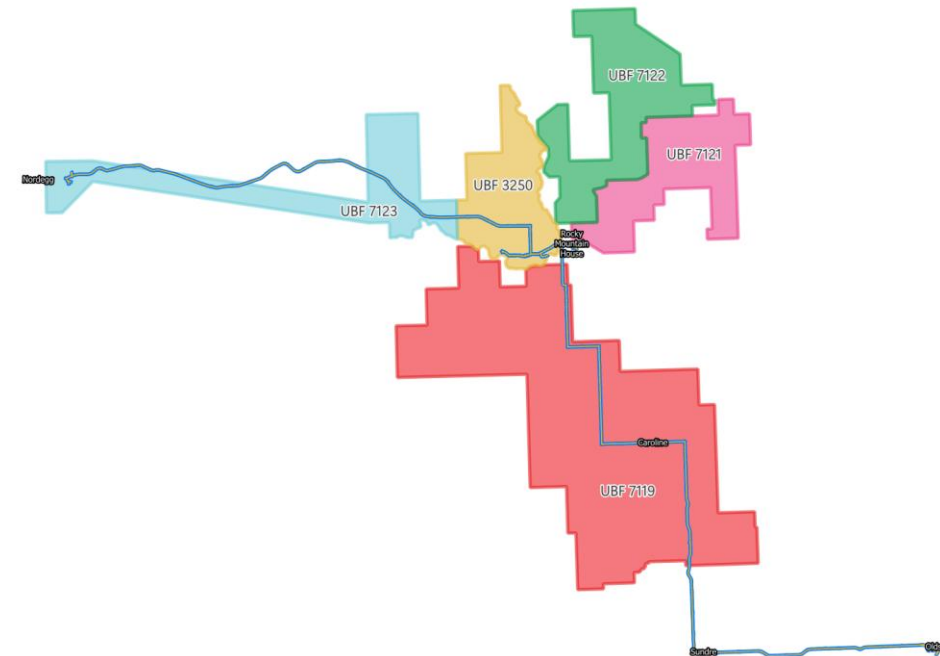


# Government Funding

**Strategy:** Where applicable the County will continue to explore, secure and leverage available funding programs to achieve its build and operate objectives for the Broadband program.

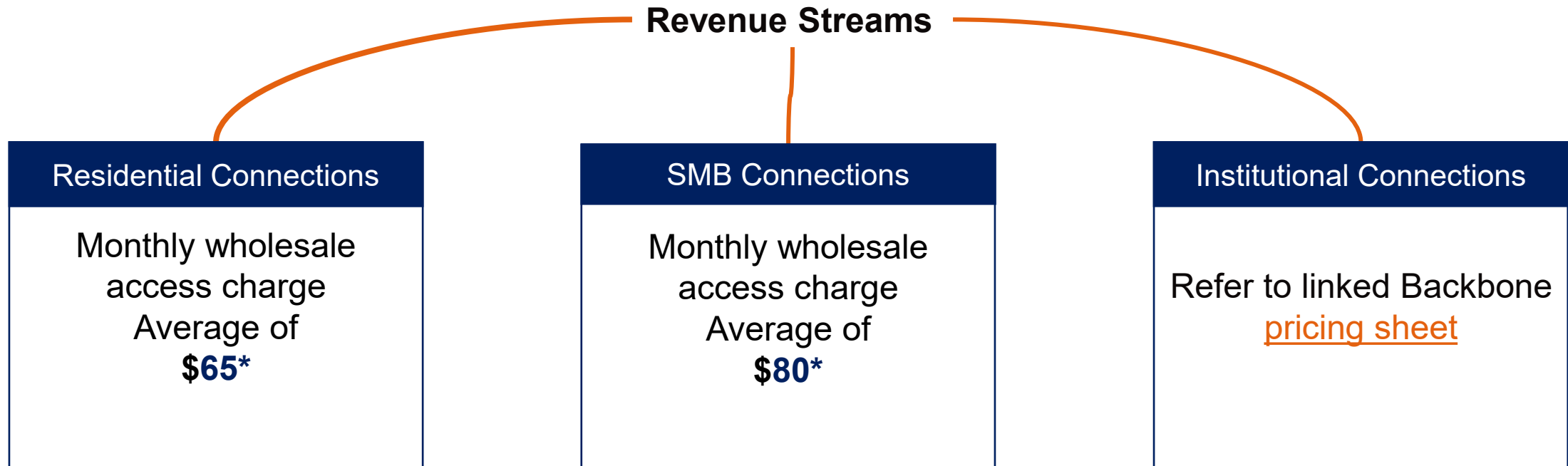
## Universal Broadband Fund:

Providing a grant for up to 75% of eligible project costs (notable capital expenditures). Clearwater county has been awarded ~\$83MM of federal and provincial funds to complete projects costing \$119MM (~70% of total project costs).



# Financial Planning, Projections & Sustainability

The County will charge simple & fair wholesale prices to ISPs looking to access its Open Access Network and where applicable, explore partnerships with utilities, schools and healthcare institutions.

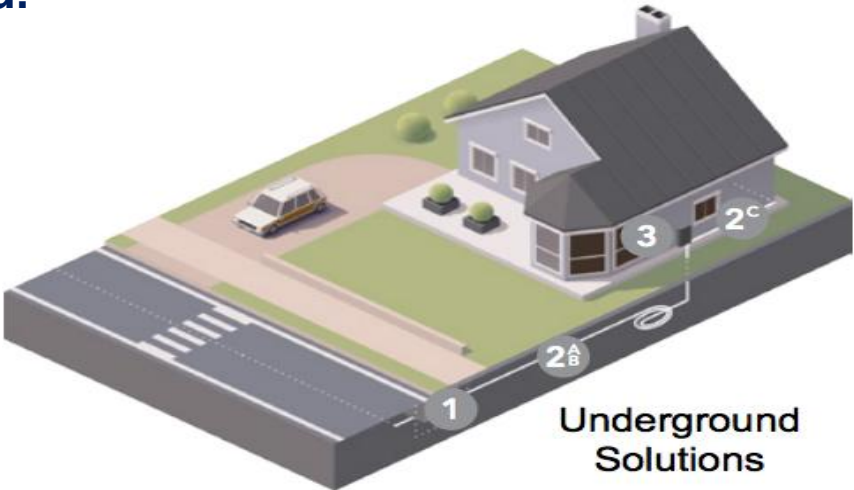


*\*Monthly charges above include rental of a customer premises equipment and a block of IP-addresses*

# Financial Planning, Projections & Sustainability

The County will charge a simple and fair one-time connection fee for homeowners and businesses looking to establish future proof connectivity for their premises as a means of cost recovery and not profit driven. To promote residential and SMB subscriber uptake before and during construction a discounted nominal fee can be offered.

One-time Connection Fee
<p><b>Standard - \$1,500*</b></p> <p>For up to 100m drops, plus actual cost per metre (\$14) for each metre &gt;100m.</p>
<p><b>Early Adopter - \$</b></p> <p>For up to 100m drops, plus actual cost per metre (\$14) for each metre &gt;100m. Available during construction.</p>
<p>*this fee represents a harmonized fee that is equitable for premises looking to connect on the network footprint regardless if they were funding eligible.</p>



Connection fees for larger businesses will be considered on a case-by-case basis, considering cost recovery.

# Infrastructure & Technology

The County will own and maintain its infrastructure leveraging the support of leading global technological solutions.

Key technologies being used to ensure project success:



Global leader in conduit supply  
incl. multi and micro ducting.  
**Future proofing the build  
with high-capacity duct.**



Global leader in professional  
and managed services for  
telecoms infrastructure.  
**Engineered for the future.**



End-to-end network  
management tool view, plan and  
deploy your network.  
**Plan, predict and operate  
more efficiently.**



AI driven tool, part of IQGEO,  
designed to validate field  
documentation delivering quality  
assured builds and handovers.  
**Fewer errors, less maintenance.**



Global leader in Operational  
Support and Billing Support  
systems focused on Open Access  
networks.  
**Fibre focused, streamlined  
operations and full automated.**

*Solutions providers listed above subject to change*





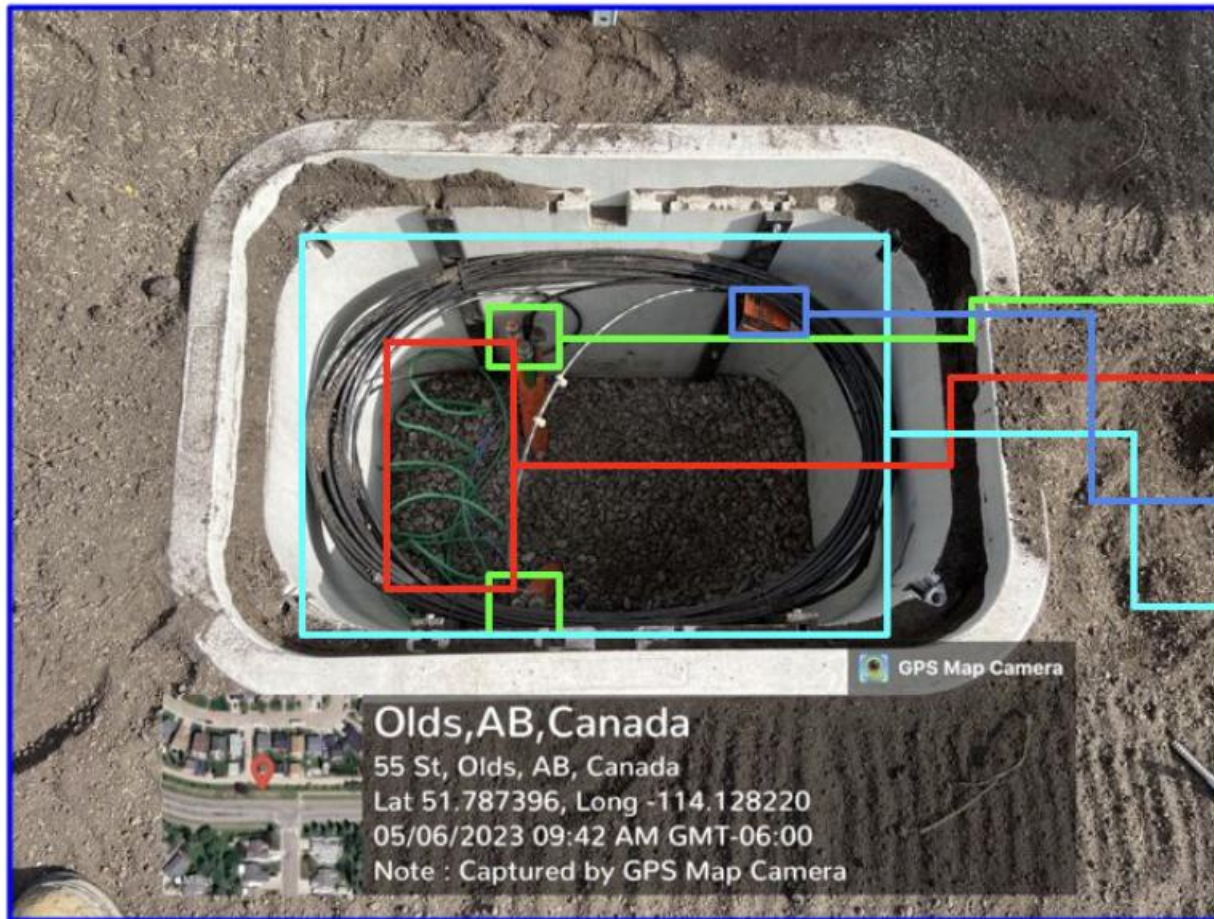
Clearwater County

**Broadband**



## Construction Readiness - Part A

### Delivery Process – Deepomatic – Open Handhole Image

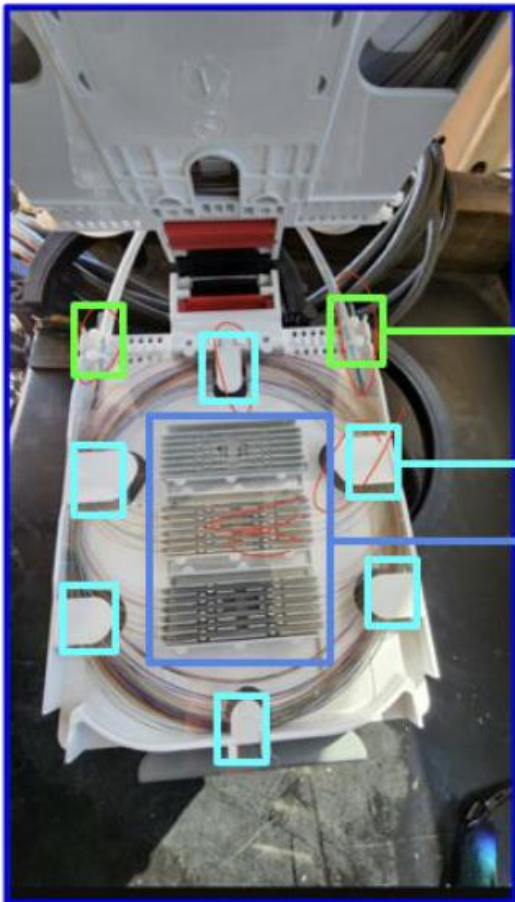


Tasks	Description	Comments
Context Validation	Is the image the correct type?	
Ducts Inventory	Count of ducts with caps on, with caps missing, and with wire secured	Based on this image, could partially or completely be hidden behind slack loop. A dedicated image would guarantee accuracy.
Green Ground Wire Clamped		Can you confirm this is a KO example? Yes
Labels Present	An orange label is detected in the image	
Slack loop present	Slack loop present around the chamber walls on pegs	
Water Present		None in this image
Debris Present		None in this image
FOSC Present	The FOSC can either be in the Handhole or in a pedestal	None in this image

# Construction Readiness - Part A



## Delivery Process – Deepomatic – Splice Tray Image



Tasks	Description	Comments
Context Validation	Is the image the correct type?	Yes
Two straps on both sides of the cassette	Two white plastic straps on each tube	
No fibres coming on top of the holders	To ensure correct fibre coiling, making sure no coiled fibres are visible over the plastic holders	
Count of splices	Count of splices in the cassette to match with GIS documentation	
No fibres present without splice protection	Ensuring that no spliced fibre is visible in the designated slots in the cassette without a splice protection	
Labels present		No labels visible in this image? No
FOSC – pressure check	The FOSC that the splicing trays are located in needs to be pressurized to 5 lbs to be sealed.	Need a different photo of the FOSC showing pressure gage at 5 lbs





Woven Empower consists of a robust end-to-end geospatial GIS asset management solution powered by IQGeo which improves productivity and collaboration across enterprise sales, planning, design, construction, and maintenance processes for telecoms and utility network operators.

Specialized applications combined with IQGeo Platform help network operators create a single source digital twin of network truth to meet their digital transformation ambitions and operational KPIs.



IQ GEO Certified Design Partner

IQGeo brings a wealth of client experience and has provided telecom, utility, and fiber network operators with the industry's most innovative network management software solutions.

**POWERED by IQGEO**

# Contact us



Telecoms & Media Cabinet Leader | Director |  
Sr. Practice Lead | Intelligent Systems  
[keith.ponton@arcadis.com](mailto:keith.ponton@arcadis.com)



FOLLOW US

