

# Superpowered Projects: Accelerating Regional Broadband Programs with Intelligent Tools

Nov 12 -14, 2025 – CRRBC Kelowna BC



Smart Arcadis Solutions





# Agenda



## Increased Pressure, Rising Stakes

Project Efficiency & Execution  
The Importance of Innovation

## Innovation Review: Decades of Change

CAD Transitioning to GIS  
Public Data Resources & Data Collection  
GIS evolution – Broadband Specific Toolsets  
Algorithmic Design

## AI Today: Practical Applications

Breakdown the Buzz – AI Models  
Project Management Support – Conversational Problem Solving  
Data Scrub & Validation & The Address Problem  
Data Extraction from static images  
API & Integrations – Coding Support

## AI Tomorrow: Upcoming Gamechangers

Intelligent Data Extraction – Google Maps to Design Through Automation  
Satellite Imagery & LIDAR – Assessment & Assumptions  
Active Project Management Assistant



# Jason McBeath

## Design & Solution Manager, Broadband

Jason is a BICSI certified Outside Plant Designer (OSP) specializing in Fiber Optic Networks, with a focus on infrastructure durability and longevity in hostile climates. He is practiced in the full life cycle of projects, including strategic planning, conceptual development, estimation and budgeting, detailed design, permitting and planning, construction oversight, and quality management. He has led efforts to develop and implement preventative maintenance programs, emergency response programs, asset management systems, and underground locate programs. Jason has participated in projects of residential, commercial, and industrial fiber-to-the-premises builds (FTTP, FTTx) and continually exercises best-practices to plan, design, deploy and operate networks of many types and sizes.

Arcadis was founded in the Netherlands in 1888 and has grown into a global industry leader through innovation, the expansion of services and a series of strategic acquisitions.

**Arcadis has been working in the field of intelligent systems for over 35 years** – we have been involved as technical advisors, consultants, designers, project managers, systems integrators, and operators of fiber networks across various projects within the field of ICT/Telecommunication.





# Intense Project Pressures

The heat is on – almost every project is facing intense pressure to execute. Time is everything, today's projects need to execute more rapidly than ever before or risk cancellation or failure

GET IT  
PLANNED



GET IT  
PERMITTED



GET IT  
BUILT



GET IT  
OPERATING







**MISSED  
FUNDING  
WINDOWS**

**INCREASING MATERIAL  
& LABOR COSTS**

**COMPETITION** POLITICAL  
LANDSCAPE

**GETTING THERE FIRST** **TIME TO  
REVENUE**

**PUBLIC** **DISSATISFACTION**

**REGULATORY** **SUPPLY CHAIN  
CHANGE** **DISRUPTION**

**CASH FLOW** **MARKET SHARE LOSS**

**TECHNOLOGY** **CONTRACTUAL  
OBSOLESCENCE** **PENALTIES**

**SHRINKING** **MISSED BUSINESS  
COMMUNITIES** **OPPORTUNITIES**

# Inaction in Action

The cost of  
indecision & delay  
can be substantial  
and often results in  
projects becoming  
unfeasible



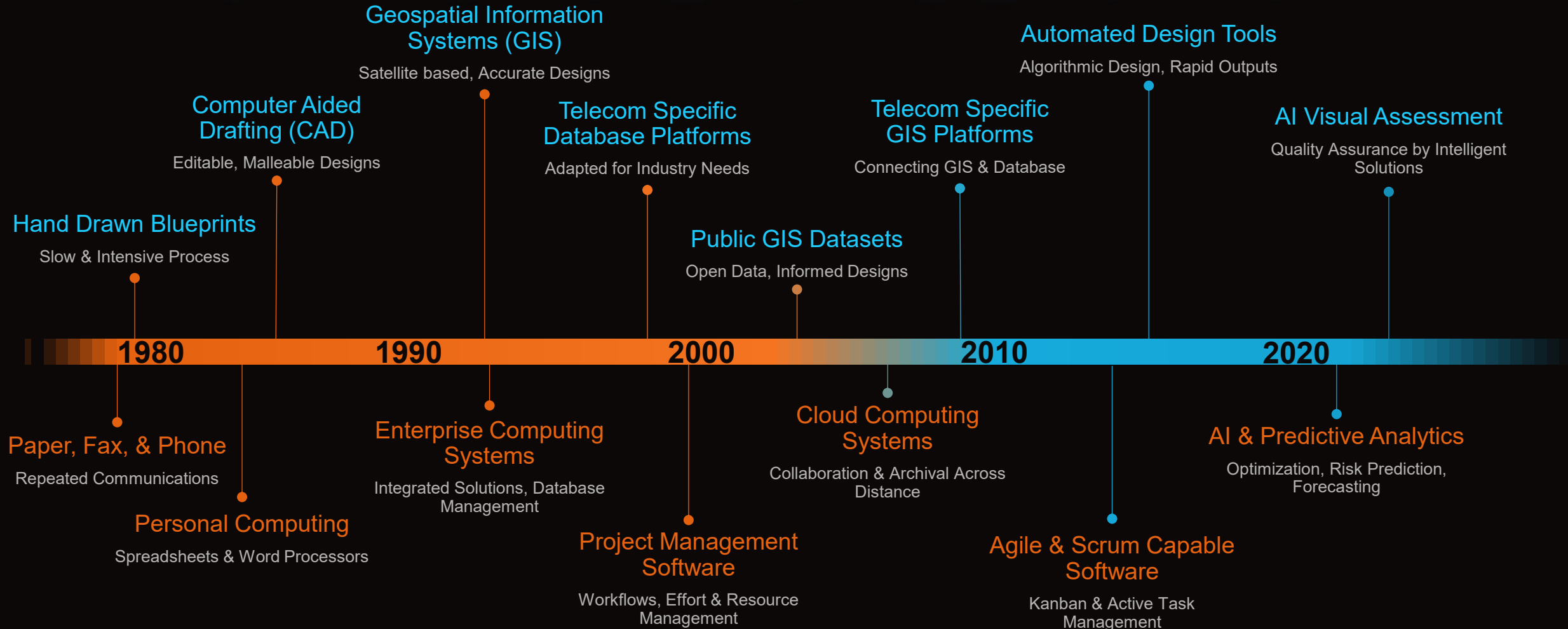
# The Importance of Innovation

**“The best way to predict the future is to invent it.”**  
— *Alan Kay*

**In today's business environment, innovation isn't optional. Efficiency powers progress, but innovation fuels transformation. Together, they define the success of modern projects and organizations.**



# Innovation in Design & Engineering



# Innovation in Project Management



# CAD Shift to Geospatial Systems (GIS)

- GIS allows Mass Data Analysis & Manipulation
- Geodata appeals to technical and non-technical team members alike
- CAD allows for “to scale” offsets and object drafting
- CAD requirements for permitting
- Publicly available data is commonly GIS formats



# Public Availability of Data - GIS

Widely Available Data across all levels of Government has changed how projects are planned.



## Municipal

- Address Point
- Parcel / Title / Cadastral
- Right of Way & Land Use



## Provincial

- Address Point
- Parcel / Title / Cadastral
- Right of Way & Land Use
- Utility
- Highway, Road, Rail
- Environment & Resource



## First Nations & Federal

- ISED & National Broadband Map
- First Nation Data



## Private

- Satellite
- Address
- Building Footprint
- Enhanced Address & Parcel
- Street View

**Private Data Procurement  
May Carry Substantial Cost**

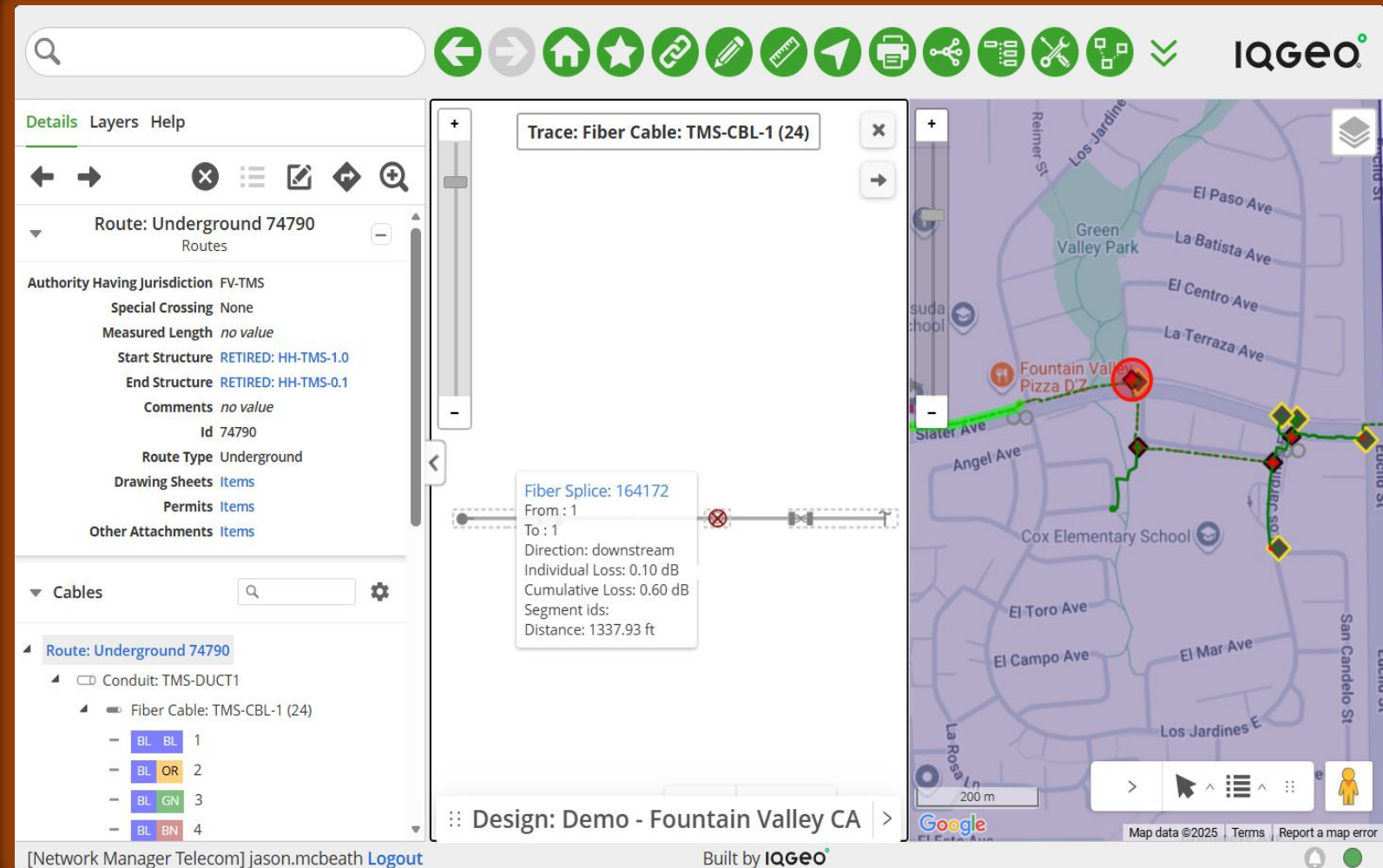


# Industry Specific Software

## GIS Built for Broadband Challenges

Connectivity of Strands & Ports, Circuit Tracing & Network Equipment Mapping all expand the capability of the software and users.

This allows for a very detailed digital recreation of the network, a **digital twin**

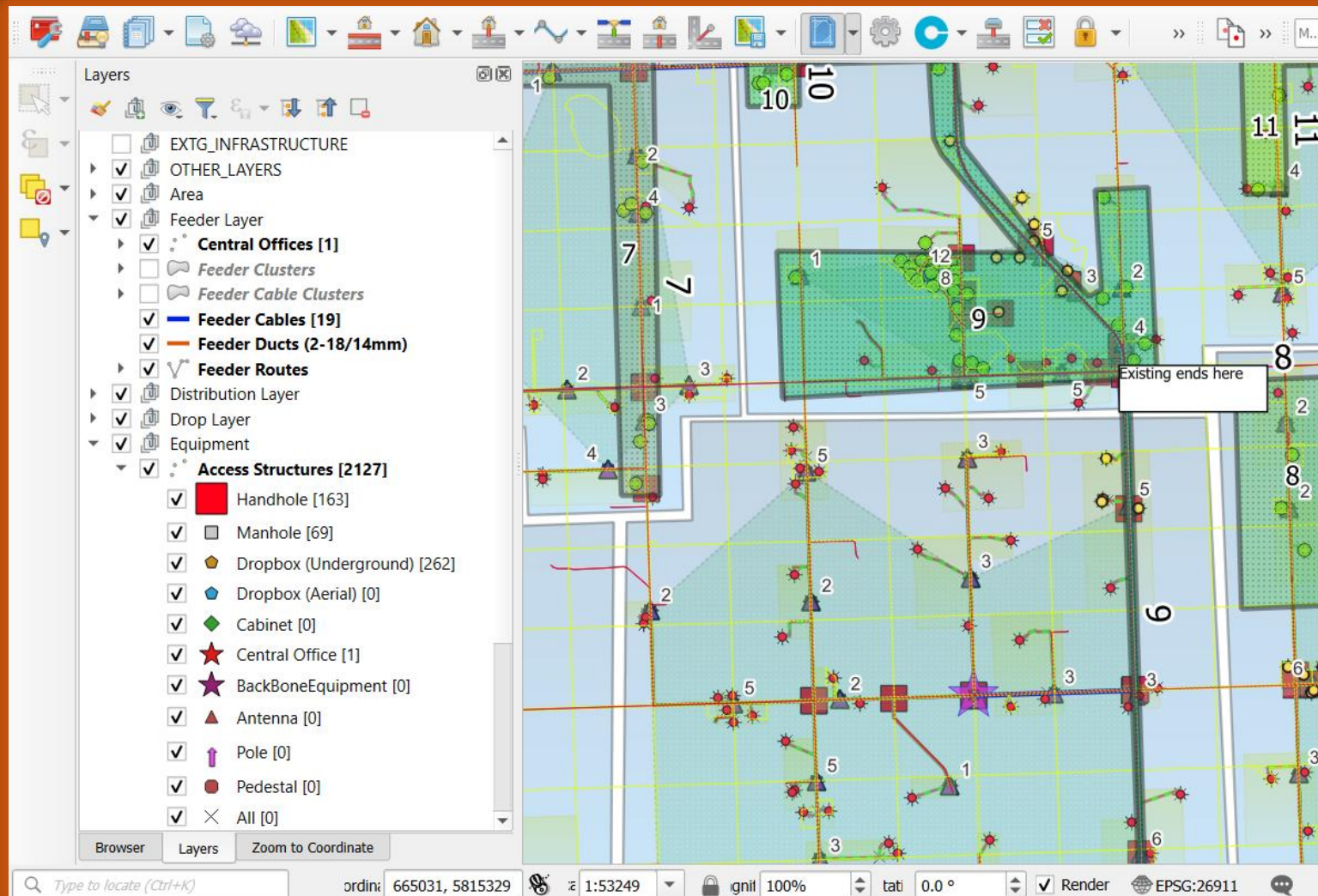


# Industry Specific Software

## Algorithmic Automated Design

Software that uses user-defined rules and tests them repeatedly against the data model until it finds the right option.

**Rapid Conceptual Designs** which can be re-ran efficiently to explore options to produce early **budgetary figures**





# Enter Artificial Intelligence (AI)

*Quick Recap of most common AI Models*

- **Large Language Models (LLM)** — a type of artificial intelligence trained to understand and generate human-like text based on **patterns in vast amounts of data**.
- **Agentic AI** — a type of artificial intelligence designed to **autonomously plan, decide, and act** toward achieving complex goals by **breaking them into smaller tasks**, executing them in sequence or in parallel, and adapting based on feedback or changing conditions.

**Early agentic models are available now  
Wide adoption expected in 2026 & 2027**

# Ideas are Compounding Exponentially

*AI tools have changed what individuals can produce.*

- Ideas are converting to reality faster than ever
- The time between idea and production is shrinking
- Subject Matter Experts are producing more
- Automation is handling repetitive and simple tasks
- Analytics and forecasting occur more often
- Data driven insights are driving better decisions



# Caution - AI is far from Perfect

Inaccuracies are constant, AI does not currently produce deliverable content

- Scrutinize Every Output
- Treat AI like a helpful employee, *but one that loves to lie and might be stealing office supplies*
- Develop process to use the tools properly and stick with them

**It's time to use  
AI Tools, but  
use them wisely**



## Inaction in Action

The cost of indecision & delay can be substantial and often results in projects becoming unfeasible



# AI in Project Management

- Automate meeting notes, status reports, and email drafts
- Summarize project updates, risks, and team performance trends
- Translate technical language for stakeholders and global teams
- Generate agendas, action items, and follow-up tasks
- Search and summarize project documentation or policies
- Support onboarding with AI-generated guides and FAQs
- Integration with tools like Microsoft Copilot, Jira, Notion, and Trello

**Enable natural language interaction with project data and tools**



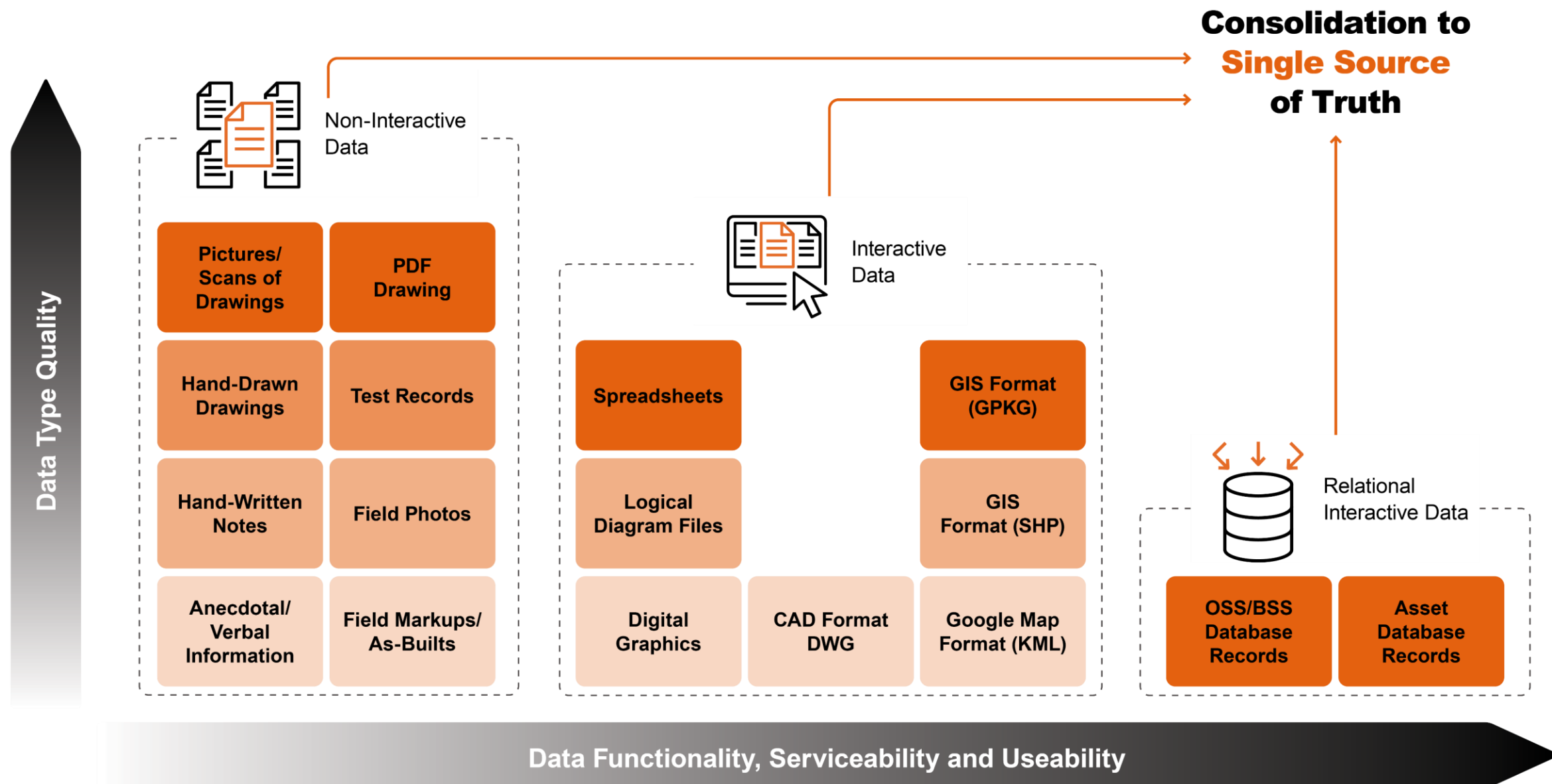


Integrating Systems using API's

## *Coding API's using AI tools*

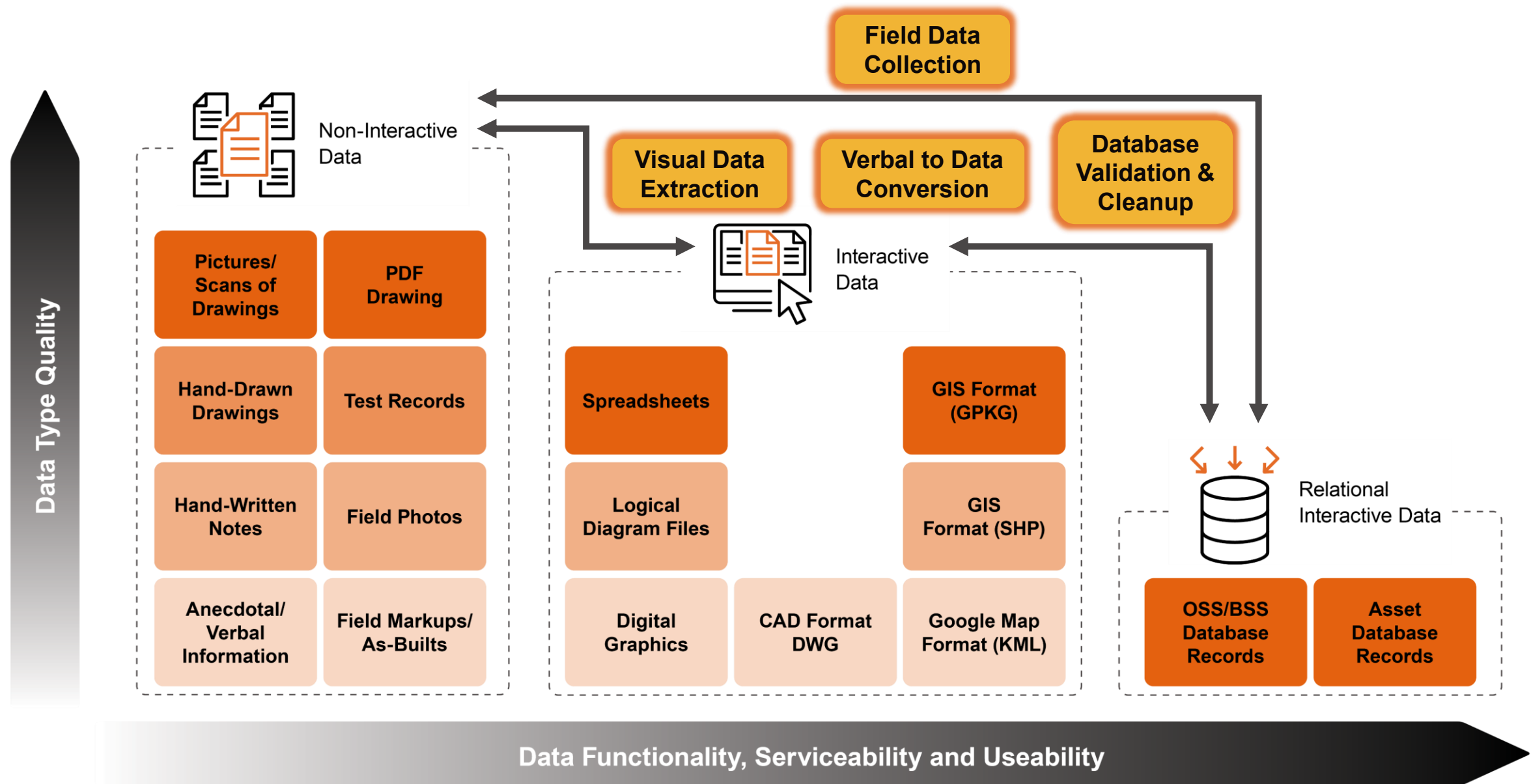
- Extend capabilities of coders by increasing efficiency
- Code quickly, troubleshoot errors, simplify code
- Integrations can occur earlier in project lifecycle

# Evolving Data & Evolving Tools





# AI Tools – Practical Use



# The Address Problem

- Address Data is complex and full of errors, no matter the data source.
- Different project stages require different things from address datasets
- Correlation & Reconciliation of Addresses is difficult and has to occur often



- I. Find the best quality data set for addresses
- II. Create your project specific address datasets
  - I. Concept Design & Budgeting
  - II. Public Outreach & Marketing
  - III. Operations & Service Delivery
- III. Create a unique ID
- IV. Integrate Tables
- V. ~~Manual Reconcile~~

**Integrate AI Model between Data Tables to Run Validation**



# AI Quality Assurance

## Image Evaluation & Data Extraction

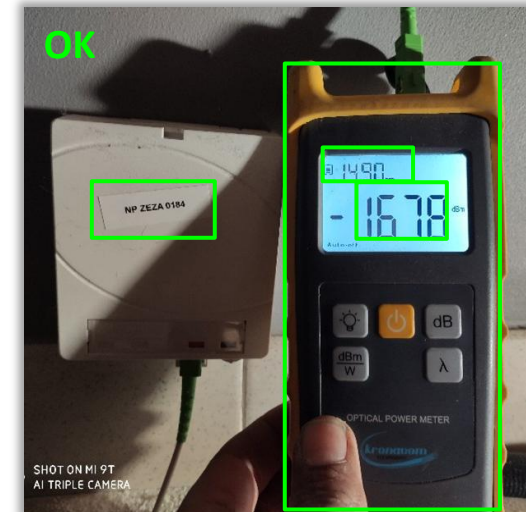
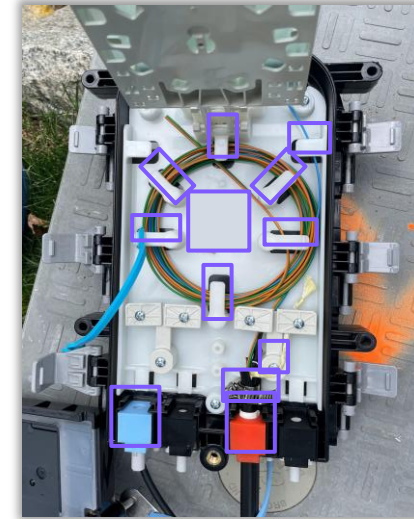
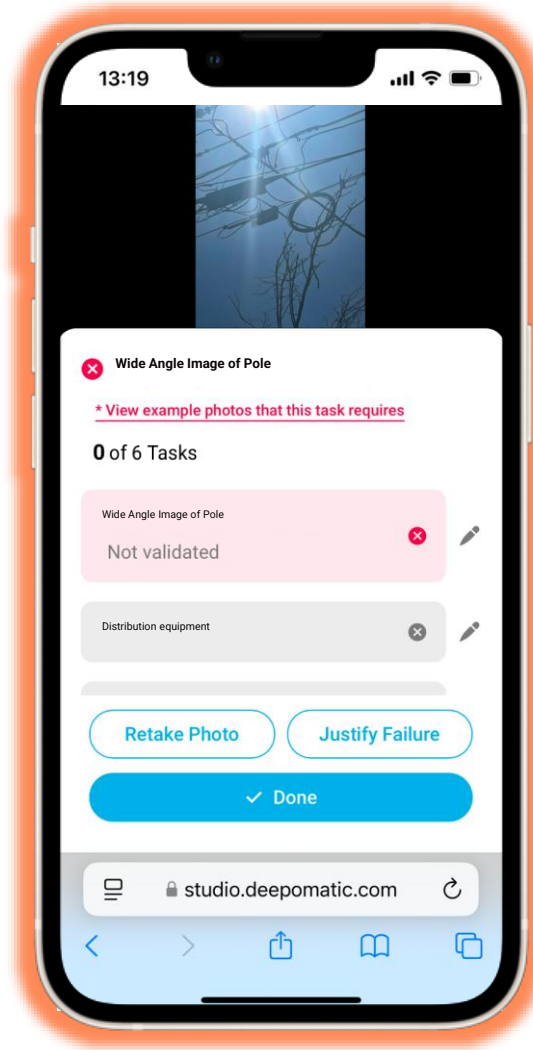
Intelligent assessment of  
images, using cloud or  
your mobile device for  
QA or Data Extraction

**Trainable,  
Configurable,  
Available Now**

**IQGeo**



deepomatic

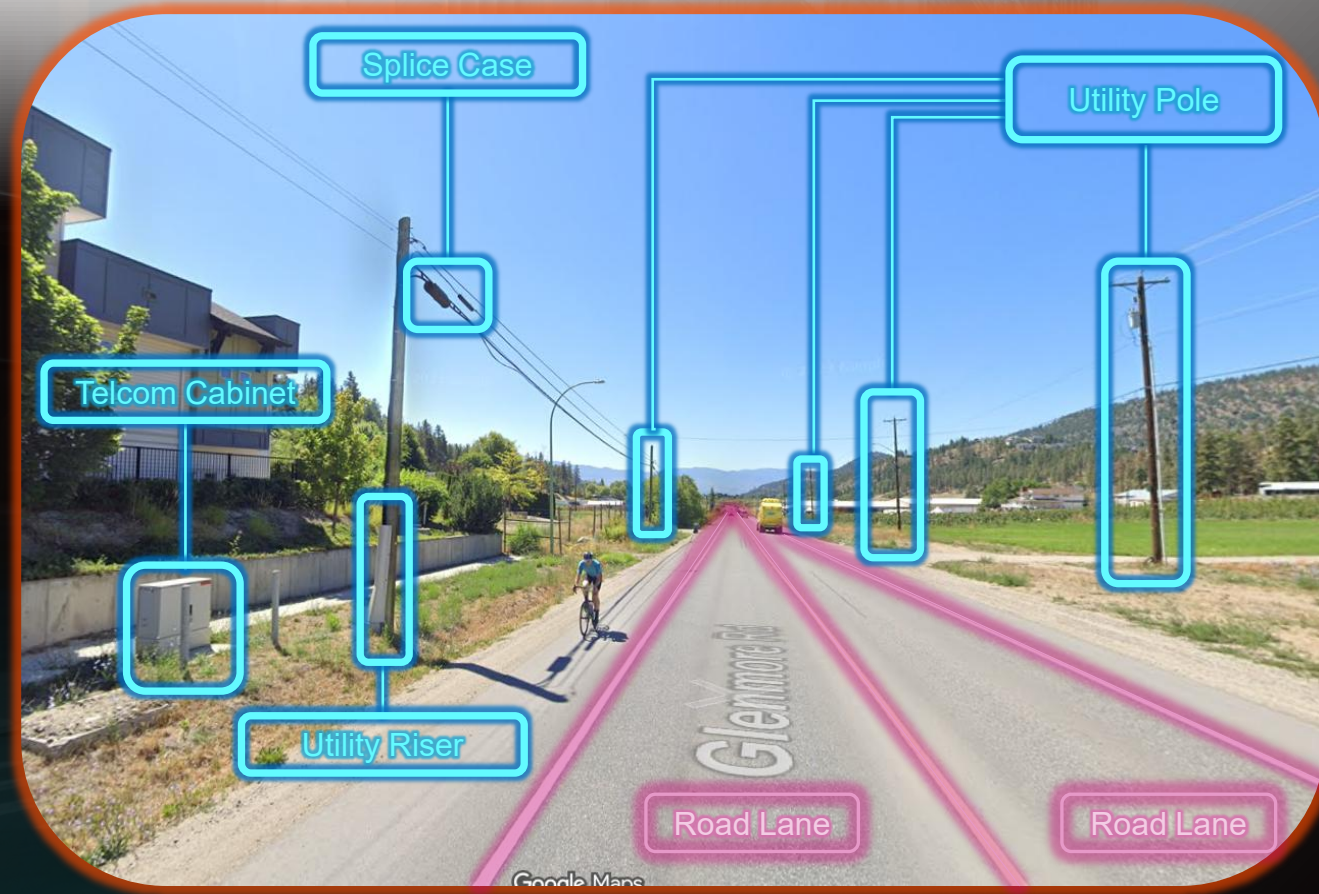


# Gamechangers on the Horizon

## Upcoming Innovation in Telecom AI

### Intelligent Data Extraction from Massive Datasets

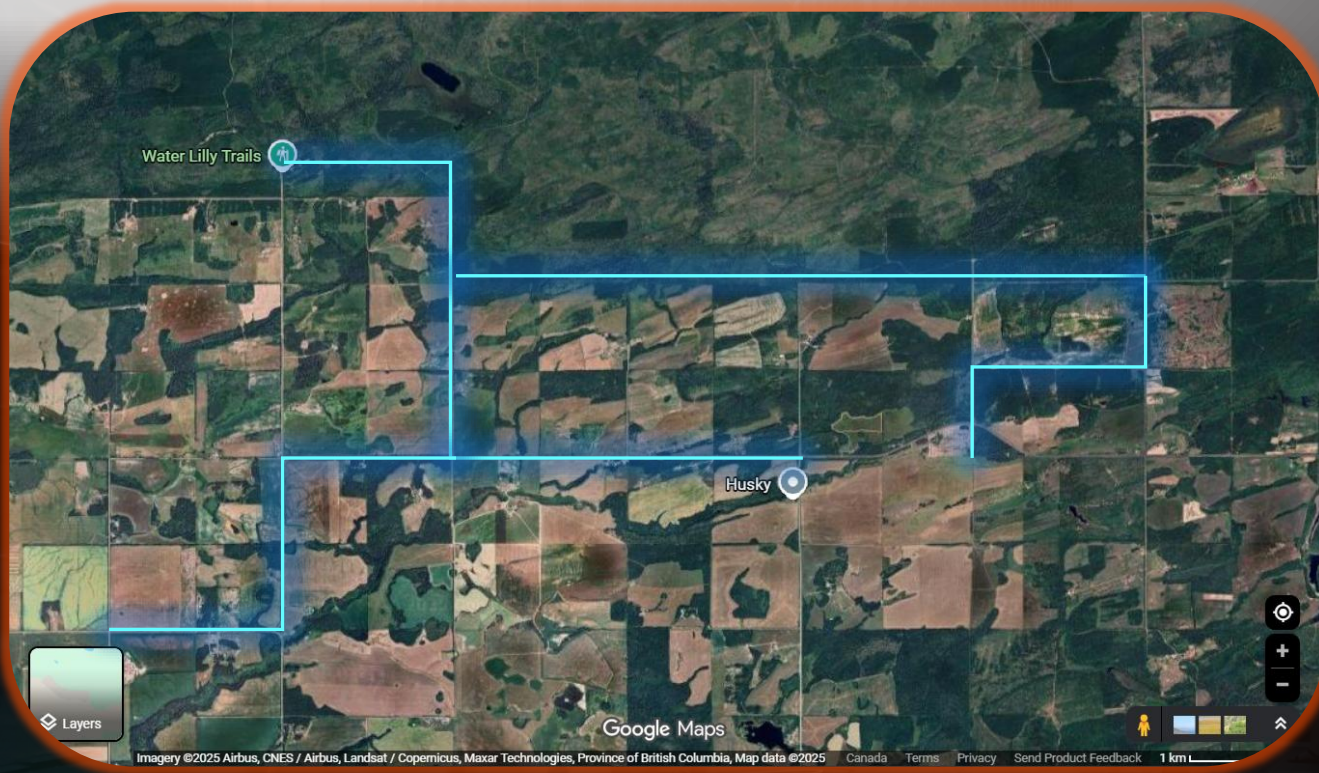
- Extract elements from Street View
- Extract elements from Satellite
- Model does not require “training”, instead will use intelligence
- Identify Objects, Plot Geospatially
- In development now– Available 2026





# Gamechangers on the Horizon

## Upcoming Innovation in Telecom AI

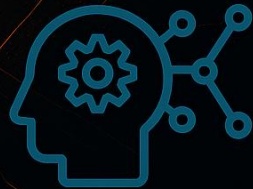
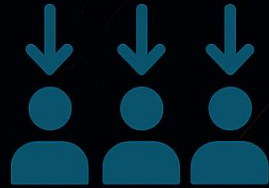
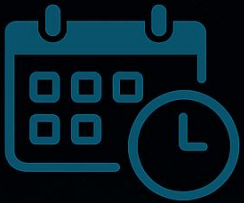


### Intelligent Design Moving Past Algorithmic Design

- Normal Language Instruction
- Intelligence Driven Design instead of testing options until they work
- Accurate Budgeting
- Closer to Detailed Design Faster

# Gamechangers on the Horizon

## Upcoming Innovation in Telecom AI



### Predictive Project Management

- **Message Monitoring**
- **Active Risk Assessment**
  - **Weather, Procurement, Incident**
- **Schedule Revectoring**
- **Solution Identification**
- **Project Communication**



# Woven Services



Woven seeks to provide specific or a comprehensive suite of services for any subscriber, service provider, network owner, or network operator to facilitate all aspects of network development. Services include consultation on strategy and infrastructure assessment, business case development, design and program management in addition to providing complete control of all network management and administration.

## engage

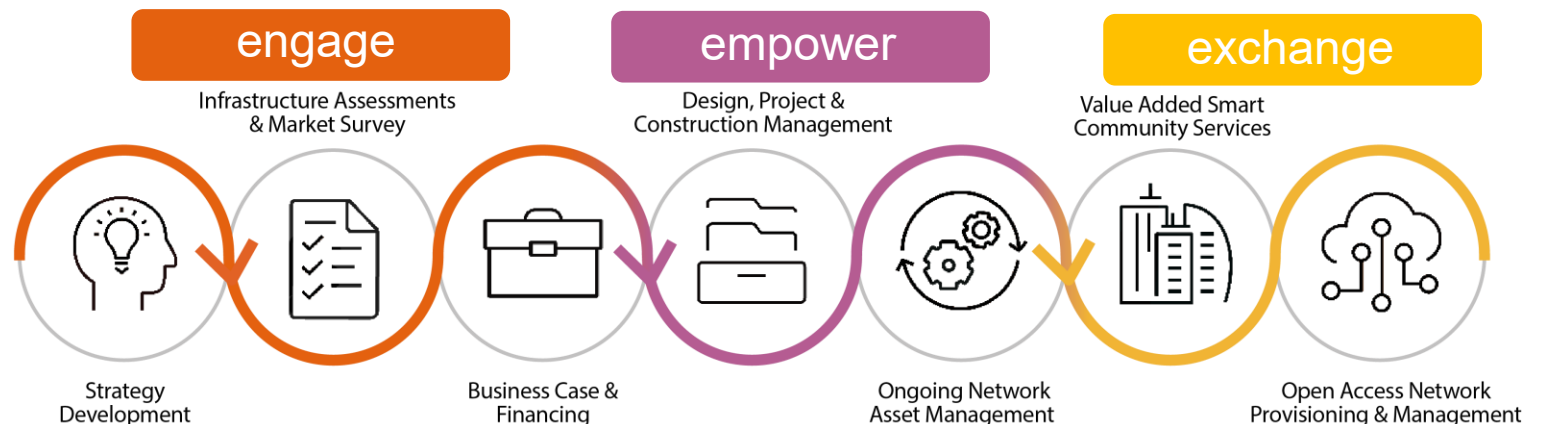
is the communication, marketing, digital education, and community consultation designed to drive and assess network demand.

## empower

is a complete asset management solution which begins at the construction phase and empowers network operators by allowing complete control of network facilitation and administration.

## exchange

is the customer marketplace, workflow engine, and meet-me-point for networks and service providers.



# Key Messages

## **Superpower Your Projects with AI**

Tools are available now but need supervision - wrap them around your people

## **Adopt AI with a Strategic Approach**

Develop clear process & policy to reduce risk

## **Integrate Now & Adapt Quickly**

The 5-year horizon is ripe for innovation, be ready to change



# Questions



**Jason McBeath**

OSP Designer & Product Design Lead



[jason.mcbeath@arcadis.com](mailto:jason.mcbeath@arcadis.com)



**(403)507-6340**

November 12-14, 2025 – CRRBC Conference – Kelowna BC

