



**DEEPALAYA**  
Empowering Individuals

# ANNUAL REPORT

**2022-23**

[www.wedeepalaya.org](http://www.wedeepalaya.org)



# Table of **CONTENT**

1. Our Vision
2. Our Mission
3. Our Values
4. Our Geographical Presence
5. From the Founder's Desk
6. Impact
7. Highlight of the Year
8. Programmes
  - a. Care
  - b. Education
  - c. Advocacy
9. Way Forward
10. Financial Records
11. Organisation Structure



## Our VISION:

We envision equal opportunity, protection of rights and full participation for person with disability, women, children, and minorities.

## Our MISSION:



**Advance social and economic development** by engaging in targeted professional activities,



**Fostering inclusivity** for individuals with diverse abilities, marginalized communities, and disadvantaged groups,



**Advocating** for equality, social justice, and human rights.





## Our VALUES:

1. **QUALITY** : We strive to serve each of our beneficiary without any biases, and satisfy expectations of all our stakeholders to the best of our ability also keeping in mind to meet our objectives.
2. **ADVOCAY**: We seek to ensure that the most vulnerable people in our society can take part in decisions that affect their lives and voice their opinions for it, also empower them to live independent
3. **ACCOUNTABILITY and TRANSPERANCY** : We are committed to being responsible and accountable for every activity and remain transparent in all our undertakings.
4. **INNOVATION** : Learning is life long and we welcome learning at each step through our day-to-day experiences. We welcome new ideas and explore new possibilities to enhance our outreach.

## Core Values



"चित्तं हि ज्ञानम्।" (The mind is knowledge)

This beautifully captures the essence of the mind's intrinsic ability to acquire knowledge. It emphasizes that our mind is not merely a repository of thoughts and emotions but also a profound vehicle for understanding and wisdom. Thus, through conscious awareness and dedicated learning, we continuously expand our mind and deepen our understanding of ourselves and the world around us. Deepalaya firmly believes in this and is thus helping children develop better knowledge by attaining better education and lifestyle.

- Dr. Ashish Kr Ramaan

## Our Gographical **PRESENCE**





# From the FOUNDER'S DESK



Deepalaya Family members learn from one another. Our mission is to connect with one another and the general public, as well as to gain the trust of each stakeholder. We determine a multitude of possibilities, recognize, and reorganize our strategies in order to maximize our efforts in delivering all potential help in this world to our beneficiaries. This is our twenty-fifth years of development towards the 'Our Mission'. Our supporters, friends and family, members and donors have always accepted our mission as an opportunity, to bring a change in the lives of thousands of children and adults having developmental disabilities, women, and adolescent girls. I know creation is only the projection into form of that which already exists and little by little, through patience and repeated effort, we have tried to develop the concept of wellness, self-awareness and increased the acceptance of our people with disabilities, women, and adolescent in the mainstream civil society. We constantly keep in mind that there are no errors, only lessons learned. We have learnt a lot from such experiences and have increased our reach to those in slums and rural regions.

This year we have spent looking for more innovative project ideas to help flourish and empower our beneficiaries and their families. During which we have also created the groundwork for our new project 'Empowering Differences'. We seek to encourage formal education Classes 1-10 for children with disabilities, equip them with various vocational and skill development trainings, and prepare them for jobs while encouraging self-sufficiency. Hopefully, in the next years, we will be able to launch our projects and assist our country through various modules of programs in service of challenged people. We aspire to make a positive influence in people's lives. I am proud of the individual donors, Nomi Network Inc., Educate Girls US, IDEA (Institute for Disaster and Emergency Aid), CCHT\_UNICEF and all supporters and organizations who have been helping us financially, professionally, and voluntarily. We are again pleased to have such wonderful support from the Nehru Yuva Kendra Sangathan Purnia for conducting workshop and training session for youth on various matters concerning climate, awareness, education etc. I am also humbly obliged for the guidance and understanding between us. I hope we as social welfare organizations continue to grow and excel together.

We are hoping to add a few more surprises for all in the coming years. Our team has a dream for all our beneficiaries and students and they are selflessly working to achieve the aspiration what they have dreamt. The Governing Members of the Deepalaya are visionary experts in their fields and are helping the Society to grow towards the mission. A special appreciation to the Managing Committee of our organization for wonderful execution of various project ideas. The existence of such committee has allowed us to take wiser decisions on all matters concerning to the smooth functioning of our organization. We are proactive to make our dreams a success and develop a world class Rehabilitation Canter for the persons with developmental disabilities. I thank you all who have been directly and indirectly associated with Deepalaya MSEVPS for your kindness, time and efforts which has made this organization a big success. Words cannot express my gratitude for each one of you; we still have a long journey to make our Dream come true.

Dr. Ashish Kr Ramaan  
Chief Functionary



# IMPACT Insights

## ADVOCACY

♦ ♦ ♦

## CARE

## EDUCATION

Three major implementing areas where maximum target beneficiaries are cared for. Further, each focus area has a set of programmes under implementation or for future implementation

With NOMI and Deepalaya's Collectively supported "NEHA" with a e-rickshaw. "NEHA" started learning for 5 hours a day with the help of a driver. For Neha's safety one of our trainer Smt. Shiv Devi has been assigned to be with her during learning hours.

### PROGRAM OVERVIEW

#### ADVOCACY

- The MHPSS Program
- The CCHT-UNICEF -Strengthening community-level structures and prosecution system for prevention of violence and abuse against children.
- Creating Economic Opportunity for Women

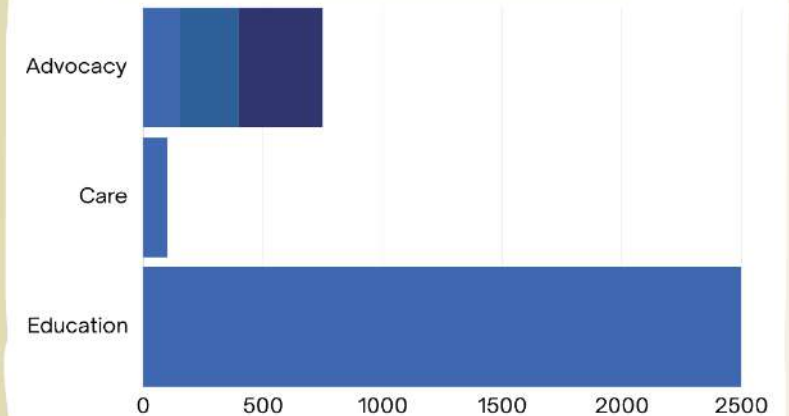
#### CARE

- Samarth - Care Center

#### EDUCATION

- Deepalaya Special School (Proposed)
- Deepalaya - NIOS (Proposed)
- Maitri Project

### BENEFICIARY BASE (2021-22)



I have learned a lot from this Foundation Phase I, it was helped me in every growing aspects like, Time Management, Problem Solving, Financial. As I am belongs to a backward community I feel my life was destroyed but now I have the confidence to move on and make my identity.

-Anuja Kumar  
(Advocacy- CEOFW)



# HIGHLIGHTS of the Year

- **Signed MOU with EDUCATE GIRLS US** to create Educate opportunity for 2000 Out of School/dropout girls in three blocks of Purnea District.
- **Participated in workshop organised by IDEA-UNICEF in Patna** to enhance CSO participation in promoting Mental Health and Psychological Support Services
- **Initiated inhouse tailoring training** for 30 beneficiaries in two batches
- **Organised district-level program** on Youth Engagement towards Environment Sustainability with support from Nehru Yuva Kendra Sangathan, Purnia.
- **Enrolled 2100 girls (age7-14)** in Government schools of Purnia District
- **Created livelihood opportunity** for 63 women and adolescent girls





# PROGRAMME

- CARE

- EDUCATION

- ADVOCACY



# CARE

## Samarth - Care Center

Samarth Respite Center is a pioneering initiative aimed at providing holistic care and support to individuals with intellectual and developmental disabilities (IDD) in India. This center is envisioned as a haven where individuals with IDD, along with their families, can find respite, support, and empowerment.

### **Objective:**

The primary objective of Samarth Center is to enhance the quality of life for individuals with IDD and their families by offering specialized care, respite services, and skill-building opportunities. Through a multidisciplinary approach, the center aims to foster independence, inclusion, and social participation among its beneficiaries.

### **Key Features:**

1. **Comprehensive Care Services:** The center offers a range of services tailored to the diverse needs of individuals with IDD, including personal care, medical support, therapeutic interventions, and recreational activities.
2. **Respite Care:** Recognizing the challenges faced by families caring for individuals with IDD, the center provides short-term residential care, allowing caregivers to take a break while ensuring continuity of care for their loved ones.
3. **Skill Development Programs:** Samarth Respite Center offers skill-building programs aimed at enhancing the capabilities and independence of individuals with IDD. These programs encompass vocational training, life skills development, and recreational activities, empowering beneficiaries to lead fulfilling lives.
4. **Family Support Services:** The center extends support to families through counseling, training, and advocacy services, equipping them with the knowledge and resources needed to provide optimal care and support to their loved ones with IDD.



5. Community Integration: Samarth Respite Center fosters community integration by promoting awareness, acceptance, and inclusion of individuals with IDD. Through outreach programs and community engagement initiatives, the center endeavors to create a more inclusive society.

6. Collaborative Partnerships: The success of Samarth Respite Center hinges on collaborative partnerships with government agencies, non-profit organizations, healthcare providers, and other stakeholders. By leveraging synergies and expertise, the center aims to maximize its impact and reach.

Currently the program is implemented in Purnia District and only runs as a day care program post COVID-19. Residential facility is yet to be reinstated. Post COVID-19, the footfall to the center has decreased and only 13 students attend the day care program. Samarth Care center would soon re-establish itself as a pioneer program catering to children (3-10 yrs) for the habilitation and readiness to gain admissions in mainstream schools in Bihar.





# Education

## Maitri Project - for reversal of 2000+ drop out girl students back in schools in Purnia district of Bihar



### Vision:

Reversal of 2000+ drop out girl students back to school in Purnea district.

### Mission:

1. Counseling of Principals and Teachers of schools for bringing back drop out girl students back in the school as per Govt. directives.
2. Community awareness on girl child education so that community imposed gender biased inhibitions are reduced.
3. Sensitization of parents for educating their girls and sending their drop out wards to school.
4. Counseling of drop out students for bringing them back in schools.
5. Creation of girl child friendly environment in the school so as to ensure their continuity in school and education.



## OUTREACH

<b>Total number of blocks</b>	<b>4</b>
<b>Target Villages</b>	<b>144</b>
<b>Total Households Covered</b>	<b>65589</b>
<b>Total number of Schools covered</b>	<b>136</b>

## OUTCOME

<b>Total OOSG (5-14) Identified</b>	<b>3470</b>
<b>OOSG (7-14) enrolled in govt. schools</b>	<b>2121</b>



# Advocacy

## MHPSS- Mental Health and Psychological Support Services

The program was formulated by IDEA - Institute for Disaster Emergency and Accidents in coordination with HFW Department, UNICEF, WHO and NIMHANS.

### AIM OF THE PROJECT

The aim of the project is create a cadre of 40,000 health service providers and community outreach volunteers in 40 districts of 3 states who will have knowledge and skills to:

- Recognize gender based violence, violence against children and understand their impact on health and well-being of children and adolescents, know how to refer victims to services including counselling, legal support, access to social protection and compensation
- Provide messages on positive parenting and psycho-educate children, adolescents, their family members and community on promoting mental health well-being
- Recognize symptoms of psychological distress, mental health disorders and know how to provide PFA, and refer those who need specialized services to District Mental Health Programme (if available), local counselling services through DCPU or online counselling
- Knowledge of helplines including 1098, 1091 and child protection referral services (Child Welfare Committee, District Child Protection Officer, Police)









## The CCHT-UNICEF - Strengthening community-level structures and prosecution system for prevention of violence and abuse against children.



CCHT (Collective Coalition Against Human Trafficking) is a platform created under the supervision of Jan Jagran Sansthan and UNICEF Patna to create a body responsible for prevention of child abuse and advocate for child rights at community level. The forum is a collective of various CBO and Non-government Organisations functioning in Patna, Purnia, Araria, Forbesganj, Supaul, Saharsa, Madhubani, Katihar etc.

The coalition has been successfully carrying out meetings and awareness activities to enhance participation of PRI in prevention against Child Abuse. The members of this coalition have also formed Child Protection Committees in different panchayats across Bihar.



	प्रखंड / Block	पंचायत / Panchayat	तिथि / Date
1	बायसी	आसजा मबैया	15-06-2022
2		चरैया	16-06-2022
3		बायसी	16-06-2022
4		हरिनतोड़	16-06-2022
5		खोपड़ा	16-06-2022
6		चन्द्रगामा	23-06-2022
7		मलहरिया	23-06-2022
8	पूर्णियाँ पूर्व	हरदा	23-07-2022
9		लालगंज	25-07-2022
10		कवैया	31-07-2022
11		रजीगंज	22-08-2022
12		बीरपुर	22-08-2022
13		रामपुर	23-08-2022
14		वियारपुर	23-08-2022
15		चाँदी	25-08-2022
16		सिंधिया	17-07-2022
17		गढ़िया बलुआ	30-07-2022
18		खोखा उत्तर	31-07-2022
19		खोखा दक्षिण	24-08-2022

# Creating Economic Opportunity For Women

Deepalaya MSEVPS in partnership with NOMI Network Inc.



Workforce Development Project was an initiative to enhance life skill and financial literacy for women and adolescent above 18 + years.

The program was created for women (18+ years) who are survivors or at risk of human trafficking. The program includes:

- Life skills and financial literacy training
- Workforce readiness
- Technical job skills training
- Job placement or entrepreneurial support
- Ongoing case management and mentorship

The program by large covered Purnia districts and successfully completed 4 cohorts.



# Outreach

INDICATORS	Achieved Until 2021			2022						
	Total 2018-2021	Ret'ned till Jan 22	Target Jan-Dec 2022	2022	Retained + Employed in 2022	Target Deficit	Average Income	TOTAL TILL Dec 2022	Achieved in %	Numbers Actively working till Feb 2023 (Retention)
Total women enrolled in FP-I (#)	212	N/A						212		NA
Total women dropped out from FP1 (#)	8							8		
Total women completed FP-I (#)	204							204	96	
<b>Total women completed FP-II (#)</b>	98	N/A	N/A	68	48	0		146	69	
Total women completed FP-II (#) in-house	0			13	0			0	0	
Total women completed FP-II (#) from NSDC certified	96			55	0			96	66	
Total women completed FP-II (#) from private centres (incl. those directly employed)	2				48			50	34	
<b>Total women employed</b>	70	58	147	63	121	26	5165	133	63	123
Total women employed (Jobs)	38	34	93	33	67	26	5885	71	53	67
Total women employed (Self Employment)	32	24	54	30	54	0	4445	62	47	56
<b>Community based Campaign</b>										
# of community population reached through awareness activities		1200	6000	5000	12200		1500			13700
# families of beneficiaries reached through awareness activities		400	500	700	1600		450			2050
# of enrolled (direct) beneficiaries reached through awareness activities		250	200	650	1100		200			1300
<b>Family Sensitization and Trainings</b>										
Parents		50	35	50	135		40			175
Siblings or other family members					0		0			0



**List of some important Partners who supported us by providing employment to our trained beneficiaries through out the project:**

**Health care** : Lifeline Hospital, Max7 Hospital, Govt. Medical College and Hospital Purnia, Sharda Multi Speciality Hospital

**Retail and Sale:** Hindustan Unilever Limited & Vishal Mega Mart

**Hospitality:** Maruti Suzuki Arena, Purnia & Seemanchal Motors

**Office & Admin:** Tatwasi Samaj Nyas (NGO), GPSVS(NGO), Helping Educational Foundation (NGO), Kidzee School

**BFSI:** SBI CSP

Deepalaya is very thankful to every institution and organisation for supporting us in our mission of creating economic independence for over 250+ women.

## Skill Training Partners



**SHILPEE**  
Educational Trust



and many other reputed organisation and institutions ..



## Way Forward:

For the upcoming year, Deepalaya's strategic plan focuses on three main areas: creating inclusive education opportunities for divyangjans, enhancing livelihood and life skills for adolescents and women, and providing residential care for the elderly with Alzheimer's and individuals with intellectual disabilities.

Deepalaya aims to ensure that divyangjans have access to quality education tailored to their needs, thereby promoting their integration into mainstream society. To fulfill this vision Deepalaya is extending its partnership with NIOS, a reputed board of education under the Government of India which provides Open Basic Education to divyangjans until 12 th class. The registration process has begun and the classes will commence on receipt of the registration.

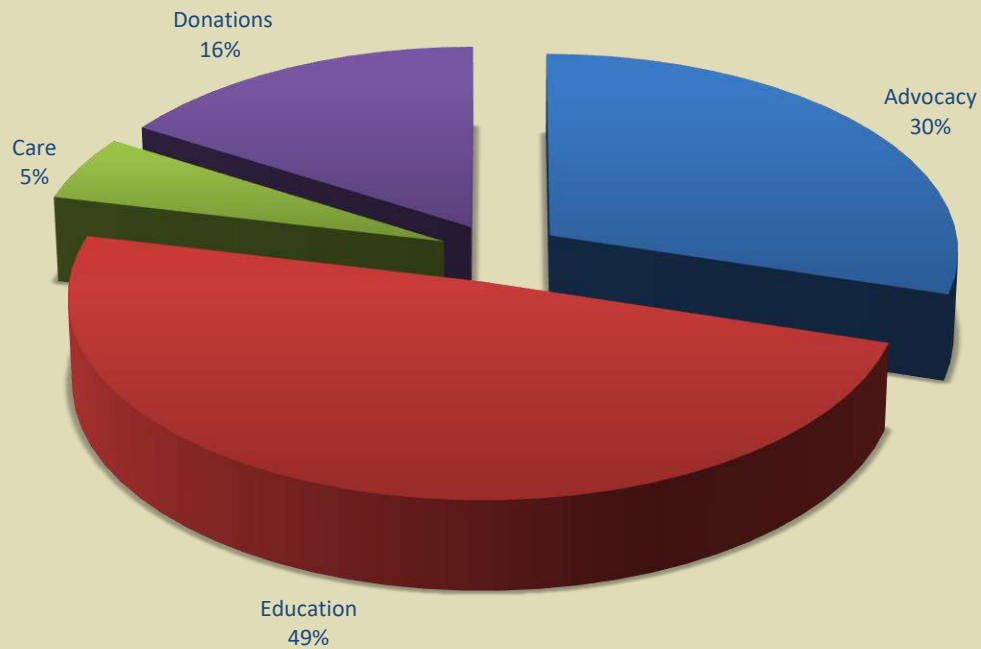
The organization will implement targeted programs to equip adolescents and women with essential life skills and vocational training, empowering them to achieve economic independence and improved quality of life.

Additionally, Deepalaya will expand its residential care facilities, offering a safe and supportive environment for the elderly with Alzheimer's and individuals with intellectual disabilities. To achieve these goals, Deepalaya plans to expand its operations to other districts and states, reaching more beneficiaries and creating a broader impact.

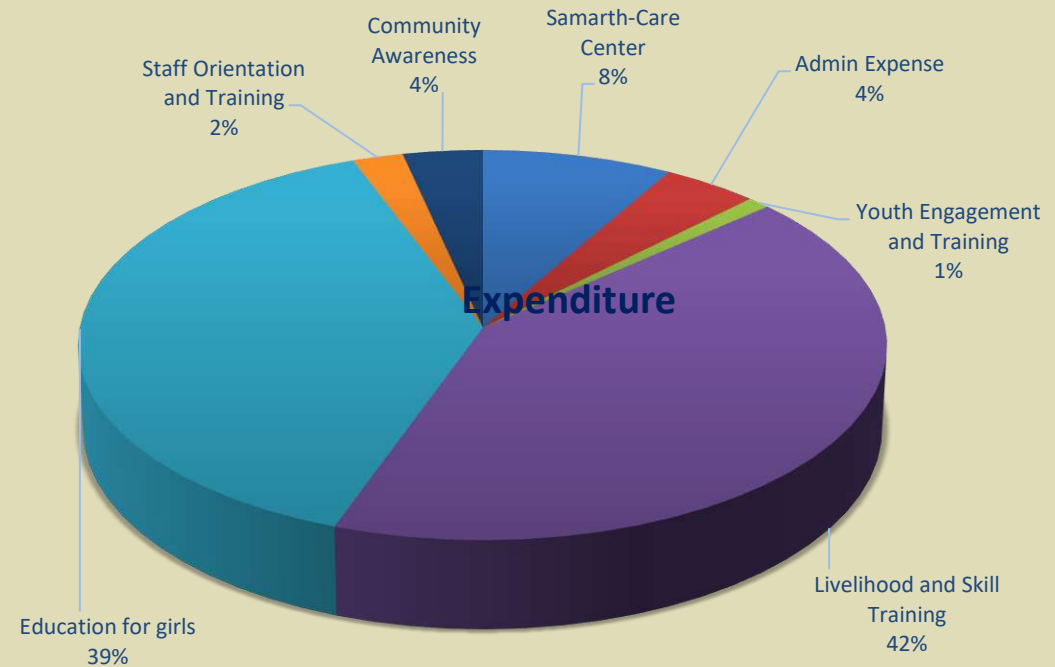
The organization is committed to welcoming new partnerships that align with its mission and fostering ongoing partnerships to ensure sustained support and collaboration.

# Financials

## Grants/Donations Received



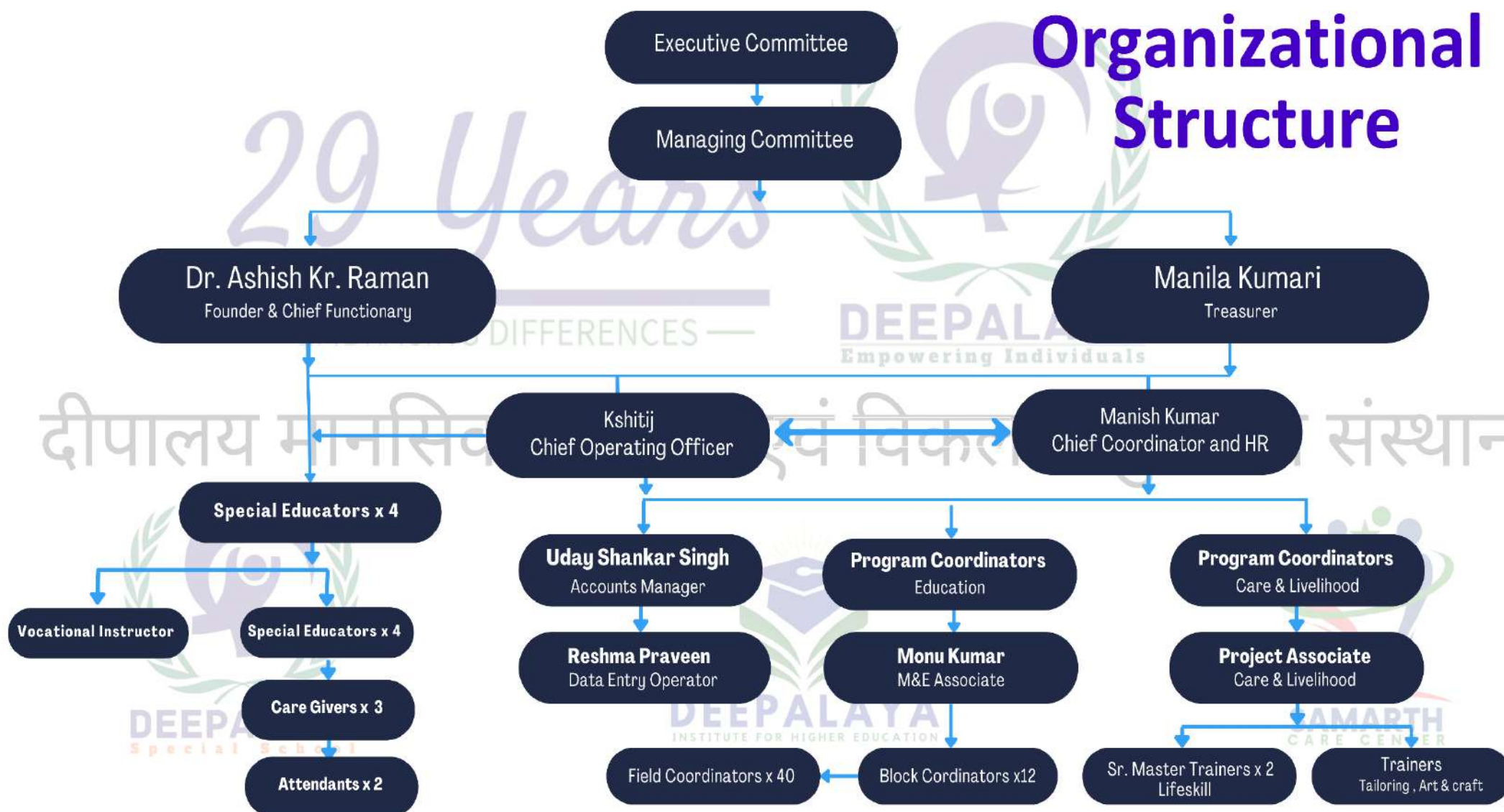
■ Advocacy ■ Education ■ Care ■ Donations



■ Samarth-Care Center ■ Admin Expense ■ Youth Engagement and Training  
 ■ Livelihood and Skill Training ■ Education for girls ■ Staff Orientation and Training  
 ■ Community Awareness



# Organizational Structure



 <https://wedeepalaya.org>

 Deepalaya.Purnea

 @Deepalayapurnia

**Contact:**

 9430059260

 [deepalaya@wedeepalaya.org](mailto:deepalaya@wedeepalaya.org)

# 29 Years

— EMBRACING DIFFERENCES —



**Admin Office:**

**Deepalaya Mansik Swasthya Evam Viklang Punarwas Sanstha**

**SS0092, NH-31 Bypass Road, East of Newalal Chowk, Purnia, Bihar-854301**



**THANK YOU**