



2023-24

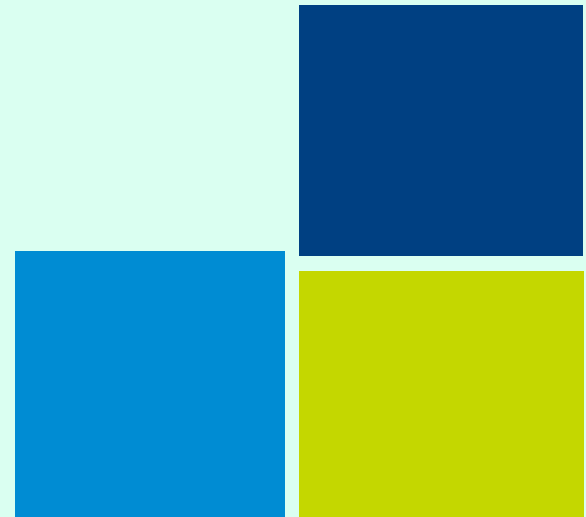
# ANNUAL REPORT



DARPAN ID: BR/2017/0116941

# Table of CONTENT

1. **Founder's Note**
2. **Our Focus Area**
3. **Our Core Activities**
4. **Programme Design**
5. **Pre-school Cum Foundation**
6. **Project Maitri**
7. **Universal Learning**
9. **Highlight Event of the Year**
10. **Year Ahead**



# Note from **FOUNDER & MANAGING SECRETARY**

Dear Patrons, Partners, & Supporters:

As we present this annual report, I am filled with great pride and gratitude for Deepalaya's remarkable journey over the last year. Our mission to empower marginalised communities, promote inclusive education, and foster sustainable development has driven us to achieve significant milestones, even in the face of numerous challenges. This year has been a testament to the resilience and dedication of our staff, volunteers, partners, and beneficiaries. This year has been particularly fruitful in advancing our mission to provide education to dropout girls and offer inclusive education to divyangjans (persons with disabilities).

One of our most significant accomplishments has been the successful implementation and completion of the Maitri Project. Focused on re-enrolling dropout girls aged between 5 and 14 years into government schools in Bihar, the project has made a substantial impact. Through a comprehensive survey across 140+ villages, we identified 3,500 out-of-school girls and have worked tirelessly to bring them back into the

educational fold. Our partnerships with government school representatives, Panchayati Raj Institutions (PRI), and district and block-level officials have been instrumental in achieving this milestone of enrolling 2121 OOSG in Government schools by December 2023. The second phase of the project is already underway, targeting 12 blocks in the Purnia District with the aim of enrolling 6,000 out-of-school girls. These efforts are not only transforming individual lives but are also contributing to the broader goal of educational equity in the region.

Together, we have navigated a landscape fraught with socioeconomic uncertainties, striving to make a long-term difference in the lives of those we serve. The initiatives described in this report demonstrate our unwavering commitment to transforming lives through education, rehabilitation, and community empowerment. In parallel, our commitment to providing care and inclusive education for Divyangjans has seen significant advancements. Our Rehabilitation centre has expanded its services, offering comprehensive support to a greater number of individuals with disabilities. This year, we have implemented tailored educational programmes that address the unique needs of Divyangjan, ensuring they receive quality education in an inclusive environment. Our specialized training for teachers, along with adaptive learning tools and resources, has enabled us to create a supportive and accessible learning atmosphere. This has empowered our students to achieve their full potential and integrate more fully into society.

The success stories emerging from these initiatives are a testament to the dedication and hard work of our staff, volunteers, and partners. It is their unwavering commitment that drives our mission forward and makes a tangible difference in the lives of those we serve. The resilience and determination of the girls and divyangjans we support inspire us every day and reinforce our belief in the transformative power of education.

Looking ahead, we are excited to continue expanding our reach and deepening our impact. Our strategic plan includes further scaling up our programmes, enhancing partnerships with recognised institutions like the NIOS and the National Trust, GOI, and leveraging innovative approaches to education and rehabilitation. We are committed to building on this year's successes and working towards a future where every individual has the opportunity to lead a life of dignity and fulfillment.

I extend my heartfelt gratitude to our donors, supporters, and partners. Your trust and generosity have been the cornerstone of our achievements. To the communities we serve, thank you for your courage and perseverance. Together, let us continue to strive for a world where education and opportunity are accessible to all.

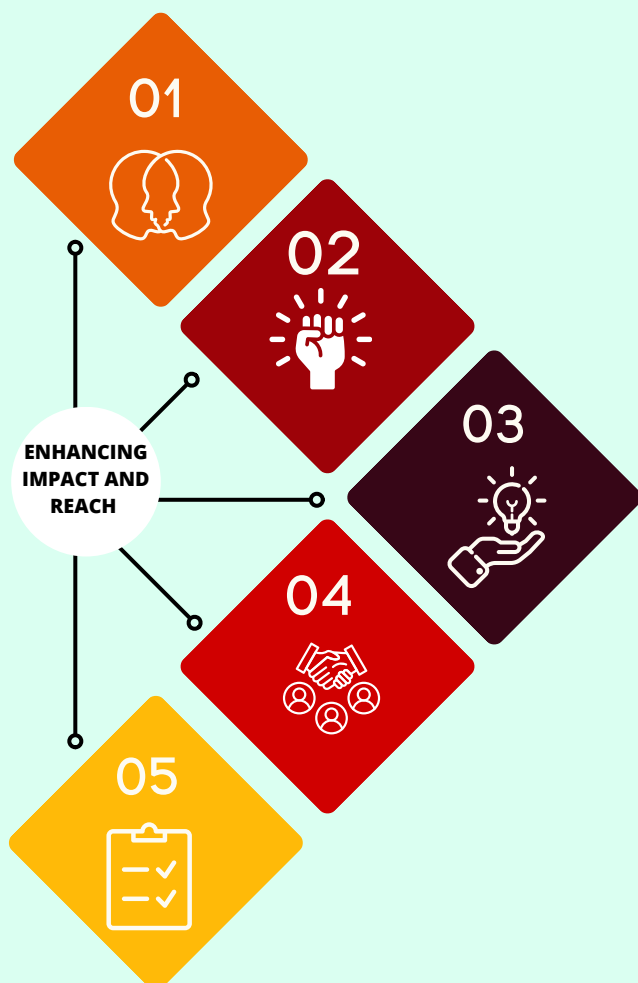
With warm regards,



**Dr. Ashish Kr. Ramaan**

Founder- Managing Secretary

# Our FOCUS AREAS



01

## Enhancing Rehabilitation Services:

Rehabilitation services to mentally and physically challenged individuals, continually enhancing infrastructure, staff training, and outreach to maximize comprehensive care.

02

## Empowering Women:

Empower women in rural and semi-urban areas through SHG formation, skill development, and entrepreneurship support, fostering economic independence and community contribution.

03

## Advocacy and Policy Influence:

Engages with policymakers and stakeholders to influence state and national social welfare policies, promoting the rights of persons with disabilities, women, and children through research, campaigns, and policy discussions.

04

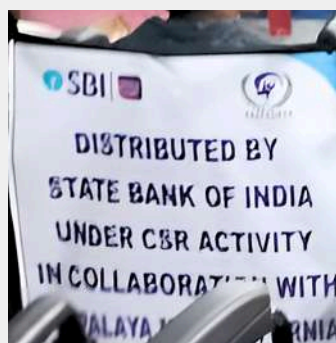
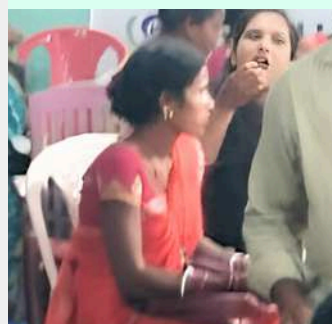
## Partnership Development:

Deepalaya actively seeks partnerships with like-minded organisations both locally and internationally. By collaborating on joint projects, sharing resources, and exchanging knowledge, we aim to maximise our impact and reach, creating a larger network of support for our initiatives.

05

## Capacity Building and Training:

We prioritize capacity building and training for staff, volunteers, and community members through workshops, seminars, and skill enhancement programs to ensure effective service delivery and community engagement.



# Our CORE ACTIVITIES



ENCOURAGING EDUCATION FOR ALL  
TO PROMOTE PERSONAL, SOCIAL &  
ECONOMICAL BENEFITS



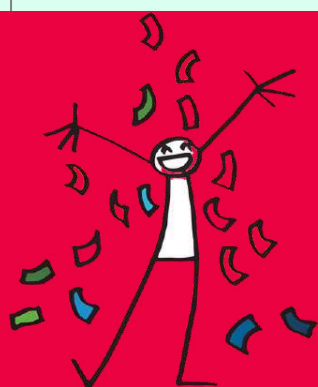
DEVELOPING AND PROVIDING  
BETTER CARE & REHABILITATION  
FACILITY FOR DIVYANGJAN



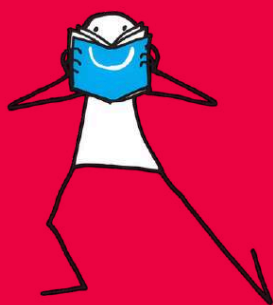
ADVOCATING FOR  
RIGHTS OF WOMEN AND  
CHILDREN



GENERATING  
EMPLOYMENT  
OPPORTUNITY FOR  
WOMEN



**1** NO  
POVERTY



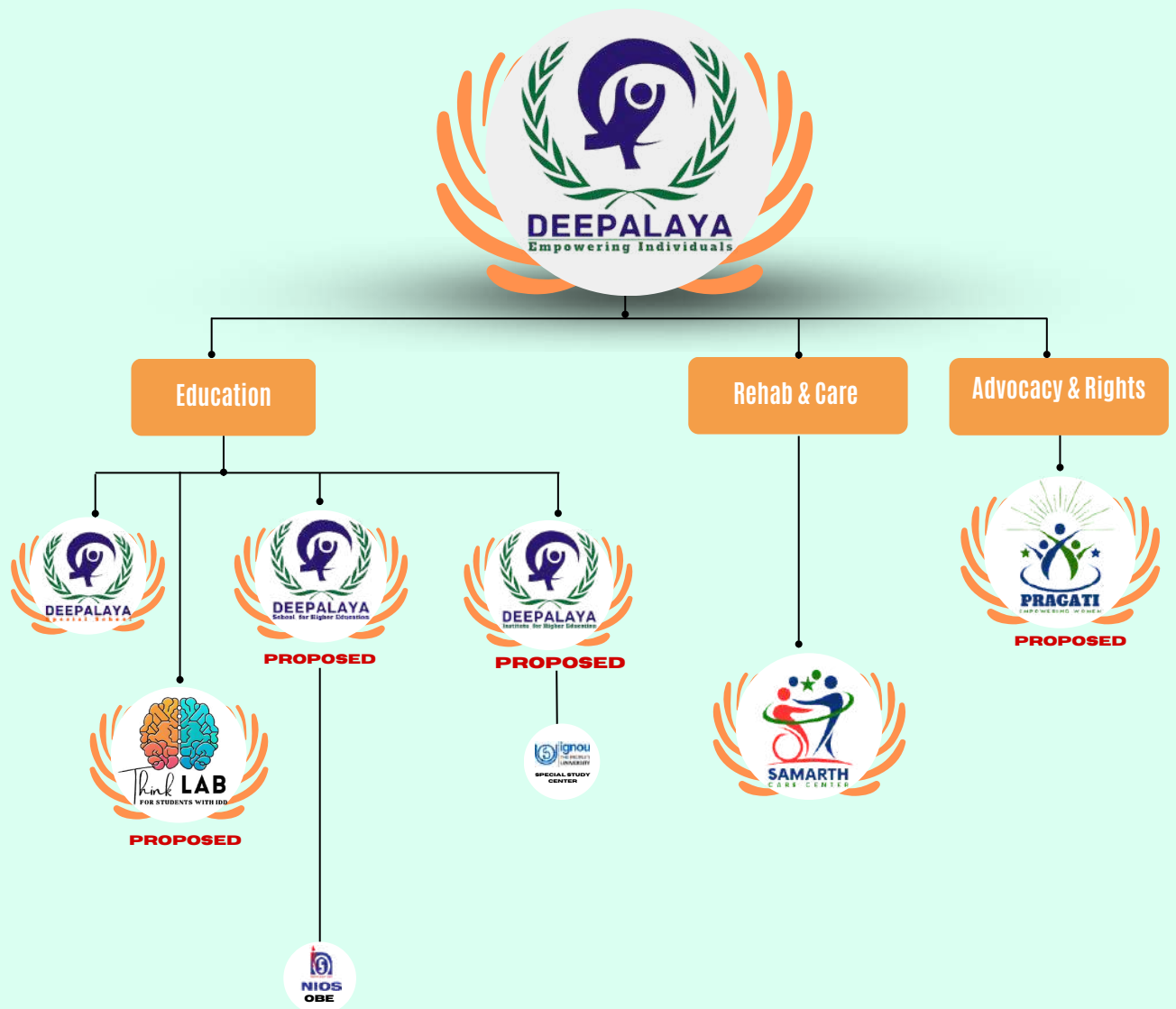
**4** QUALITY  
EDUCATION



WE VALUE  
PARTNERSHIPS  
WITH  
ORGANISATION TO  
PROMOTE GLOBAL  
OBJECTIVES

# PROGRAM

## Design



**Deepalaya is also Implementing Partner under Various Projects & Programme with**

- **EDUCATE GIRLS US - PROJECT MAITRI**
- **NEHRU YUVA KENDRA SANGATHAN - YOUTH EMPOWERMENT**



Over the past year, Deepalaya has dedicated itself to expanding and enhancing our services across various domains to serve our communities. Deepalaya is poised to make a significant and lasting impact on the communities we serve. We remain committed to our mission of empowering marginalized individuals and fostering sustainable development, guided by our core values of inclusivity, equity, and social justice.

## PRE-SCHOOL CUM FOUNDATION PHASE



*The main purpose of the programme is to:*

1. Promote the overall development of children, including physical, emotional, social, and cognitive aspects.
2. Prepare children for formal schooling by developing their basic literacy and numeracy skills.
3. Ensure children receive adequate nutrition and healthcare, including regular health check-ups and immunizations.
4. Engage parents and caregivers in the early education process, providing them with guidance and resources to support their child's development.
5. Inclusive Education: Ensure that children from all backgrounds, including those with disabilities and those from marginalized communities, have access to quality early childhood education.



## Rekindling PARTNERSHIPS



Deepalaya aims to significantly enhance the services of our Care Centre by forging a strategic partnership with the National Trust, Government of India. Through collaboration with the National Trust's various schemes, we will introduce a more impactful approach to early intervention and day care for individuals with disabilities.

This partnership will enable us to access specialised resources, training, and funding, thereby enriching our programmes and expanding our reach.

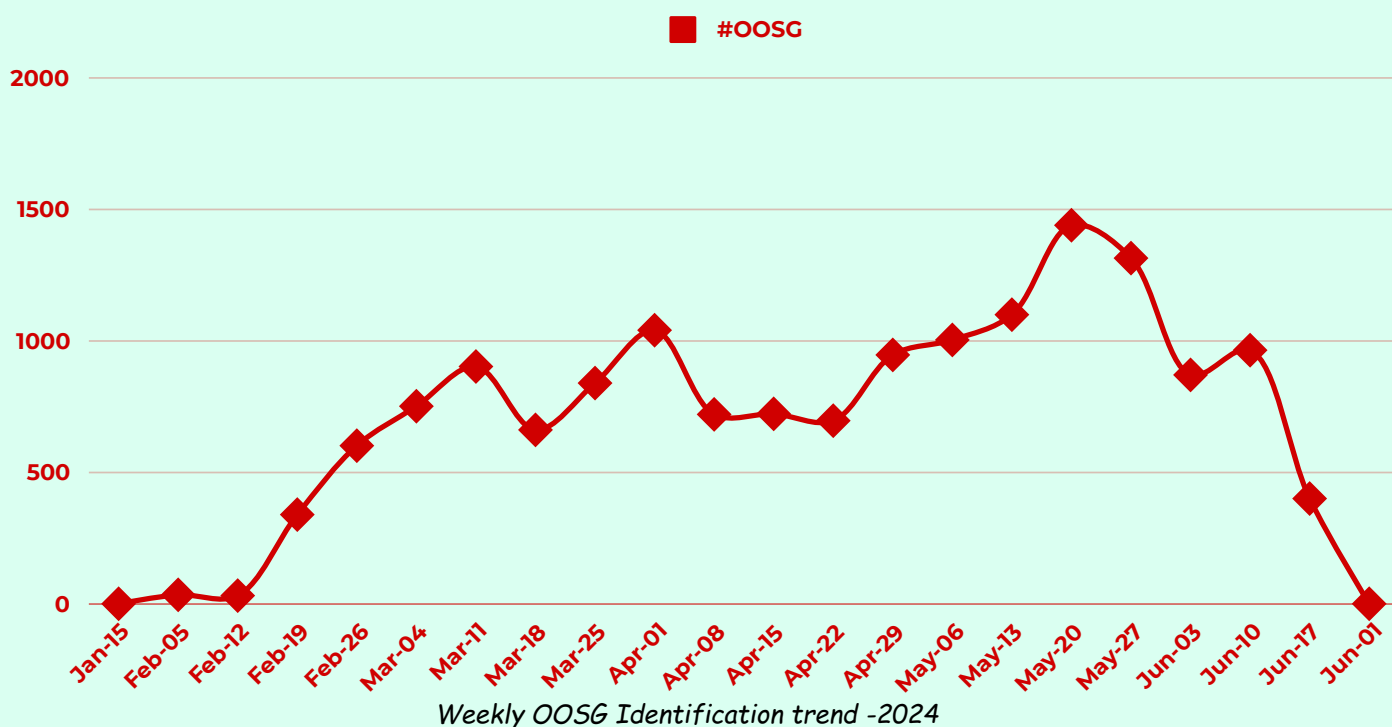
By aligning our efforts with national initiatives, Deepalaya is committed to providing comprehensive care and support, ensuring that individuals with disabilities receive the highest quality of early intervention and daycare services, ultimately improving their quality of life and fostering a more inclusive community. The Organisation plans to start implementation of projects after completing all required registration process by the end of 2024.

# Project MAITRI

Maitri Project is a collaborative effort of Deepalaya MSEVPS and **Educate Girls US**. Educate Girls launched this project with the aim of enhancing the footfall of female students in government schools across the country. The project focused on identifying dropout girl children and enrolling them in government schools to continue their education.

After successfully completing Cohort-1 of the project in four blocks of Purnia District, the scope of the project was expanded to the remaining 8 new blocks and some uncovered blocks of the remaining districts from Cohort-1. This was launched with the aim of identifying as many as 15,000 out-of-school girls in the district.

Over 6 months of rigorous field visits and door-to-door visits, we have successfully identified 15,393 out-of-school girls, covering 297,839 households. Enrollments of these identified beneficiaries in government schools are underway and will be completed by December 2024.



## Milestones reached 2024:

- Identified 15000+ OOSG
- Covered 2,97,000+ households
- Covered 500+ villages



# UNIVERSAL LEARNING:

## Breaking Barriers to Education

Deepalaya MSEVPS is committed to providing fair treatment for all individuals, with a particular focus on women and those with intellectual and developmental disabilities (IDD), regardless of their status, gender, or religious beliefs.

As we move forward with our mission, Deepalaya is focused on rekindling and reengaging partnerships with previous collaborators to explore new opportunities for mutual benefit and impact divyangjan (persons with disabilities).

### 1. Partnering with NIOS: Making Accessible Education a Reality

Our collaboration with the National Institute of Open Schooling (NIOS) will mark a pivotal step in our journey towards inclusive education. NIOS is renowned for its flexible learning opportunities, offering Open Basic Education (OBE) that caters to learners of all backgrounds, including those with special needs. By partnering with NIOS, we aim to provide education up to Class 10 for all divyangjan, ensuring that no learner is left behind. Along with formal education, learners would also get opportunity to enroll in various vocational courses to enhance employable skill.



NIOS-Open Basic Education Programme has three levels

- Level 'A' is equivalent to 'Class 3'
- Level 'B' is equivalent to 'Class 5'
- Level 'C' is equivalent to 'Class 8'



In addition to our partnership with NIOS, we are also collaborating with the National Trust, Government of India, to enhance our early intervention and day care facilities. The National Trust has a wealth of experience and resources dedicated to the care and development of individuals with disabilities.

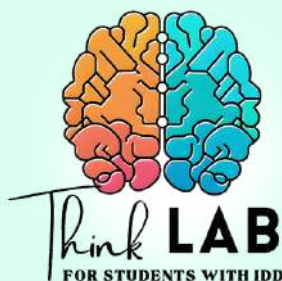
Through our partnership, we will implement advanced early intervention programmes that identify developmental delays and provide targeted therapies to address them. This early support is vital for maximising the potential of these children.

Providing a safe and nurturing environment for children with disabilities is at the core of our mission. Our enhanced daycare facilities will offer specialised care, therapy, and educational programmes designed to meet the unique needs of each child. This ensures that they receive the support they need to thrive while also giving their families peace of mind.

### 2. Enhancing Early Intervention and Day Care with National Trust, Govt. of India

### 3. Think Lab: A Leap Towards e-Literacy

In our pursuit of inclusive education, we are also launching an e-literacy center called "Think Lab". This innovative initiative is designed to bridge the digital divide and equip Divyangjan with essential digital skills. Think Lab will train 180 students, providing them with the knowledge and tools necessary to thrive in the digital age. Think Lab will not only focus on digital literacy but also on creating employment opportunities for its participants. By providing hands-on training in various digital technologies, we aim to empower these students to secure meaningful employment and become active contributors to the digital economy.



# HIGHLIGHT EVENTS

## of the Year - 2024

1

### Inauguration of Medical Mobile Unit

CSR partnership with NBCC (India) Ltd.

NBCC (India) Ltd., a Public Sector Undertaking, has partnered with Deepalaya Mansik Swasthya Evam Viklang Punarwas Sansthan (MSEVPS) to donate a Medical Mobile Unit (MMU) under their Corporate Social Responsibility initiatives. This MMU will operate in Purnia District and nearby areas, providing patient transportation and facilitating medical awareness activities. The MMU was virtually flagged off by the Chairman and Managing Director of NBCC, Shri P.K. Gupta, along with the Board of Directors, on September 2, 2023. This MMU is a key component of the first phase of Deepalaya's Holistic Health Programme. Its role is pivotal in ensuring the smooth implementation of the project across different locations. We are profoundly grateful to NBCC for accepting our proposal and partnering with us in this initiative. The MMU will be instrumental in bolstering our project, significantly enhancing our ability to deliver healthcare services to the community.



2

### Distribution of Wheel Chair by State Bank of India

CSR partnership with State Bank of India



State Bank of India has been very supportive in our mission. Every year SBI under its CSR initiatives make small generous donations in kind of aids and appliances, books etc that can be put to use by our children in the daily school activity. We extend our heartfelt gratitude to the State Bank of India for their generous donation of wheelchairs to Deepalaya. This contribution is invaluable in enhancing the mobility and independence of children with special needs in our care. Your support not only improves their quality of life but also empowers them to participate more actively in educational and social activities. Thank you for making a meaningful difference in the lives of children.

3

### Distribution of Wheel Chair by State Bank of India

CSR partnership with State Bank of India

We sincerely thank the State Bank of India for their generous donation of an air cooler to our daycare center. This thoughtful contribution provides much-needed relief to our children during the extreme summer conditions, ensuring a comfortable and conducive environment for their growth and learning. Thank you for your support and kindness.



4

### Free Health Camp

courtesy of Shri Rajiv Srivastav (Independent Director, NBCC (India) Ltd.)



Participating in the Free Health Camp organized by Sahyog Nursing Home, Purnia was an incredibly rewarding experience. Our team assisted in providing essential medical services, including health check-ups and nutritional counseling, to underserved communities. Beyond medical care, we conducted health education sessions on hygiene and disease prevention, empowering individuals with knowledge for healthier living. The personal connections we formed and the gratitude expressed by the patients underscored the profound impact of accessible healthcare. This experience has reinforced our commitment to making a positive difference in the community.

3

### Youth Engagement on Environment Protection Program

Nehru Yuva Kendra Sangathan Purnia

We recently held an inspiring program focused on youth engagement in environmental protection. The event brought together enthusiastic young individuals dedicated to making a positive impact on our planet. Participants engaged in activities such as waste management workshops, changing climate impacts and interactive discussions on sustainability practices. The programme aimed to empower youth with knowledge and practical skills to address environmental challenges. Their enthusiasm and commitment to protecting the environment were truly inspiring. This event not only educated but also motivated our youth to become proactive stewards of our planet's future.



# YEAR AHEAD FOR DEEPALAYA MSEVPS - 2024

In the upcoming year, Deepalaya is dedicated to expanding and enhancing our initiatives to better serve the community and create lasting, positive impacts. Our multifaceted approach focuses on education, healthcare, skill development, early intervention, community engagement, and operational expansion. Here is a detailed look at our plans for the year ahead

Deepalaya will continue to prioritise inclusive education through strategic collaborations and new initiatives. Our partnership with the National Institute of Open Schooling (NIOS) will be strengthened to provide accessible education for Divyangjan (persons with disabilities). This collaboration aims to offer Open Basic Education up to Class 10, ensuring that students with diverse needs receive quality education tailored to their abilities.

In addition, we plan to establish new educational centres in underserved regions, expanding our reach and providing quality education to more children. These centres will be equipped with necessary resources and trained educators to create a supportive and inclusive learning environment.

Healthcare remains a crucial focus for Deepalaya. We plan to expand our Mobile Medical Units' reach to cover more remote areas, providing essential healthcare services and medical awareness activities. These units will offer general health check-ups, dental care, eye examinations, and nutritional counselling, ensuring comprehensive healthcare access for all.

Furthermore, we will organise regular health camps focusing on preventive care and health education, particularly in rural communities. These camps aim to address common health issues, raise awareness about hygiene and disease prevention, and promote healthy living practices.

Empowering youth and women with employable skills is a key objective for Deepalaya. Our e-literacy centre, Think Lab, will launch new batches, training 180 more students in digital skills. This initiative aims to bridge the digital divide and prepare participants for opportunities in the digital economy.

Additionally, we will introduce new vocational training programmes tailored to market needs. These programmes will focus on various trades and skills, empowering youth and women with practical knowledge and enhancing their employability. By creating pathways to employment, we aim to foster economic independence and improve the quality of life for our beneficiaries.

Early intervention is crucial for the development of children with disabilities. With support from the National Trust, Deepalaya will enhance our early intervention and day care facilities. These services will offer comprehensive developmental support, including educational and therapeutic activities, in a safe and nurturing environment.

We will also expand our family support programmes, providing resources and guidance to help families better care for their children. These programmes will include counselling, training workshops, and access to specialised services, ensuring a holistic approach to supporting children with disabilities and their families.

Engaging the community and raising awareness on various social issues is a vital part of our mission. We plan to conduct more youth engagement programmes focused on environmental protection, fostering a sense of responsibility and proactive action among young individuals. These programmes will include tree planting, waste management workshops, and interactive discussions on sustainability practices.

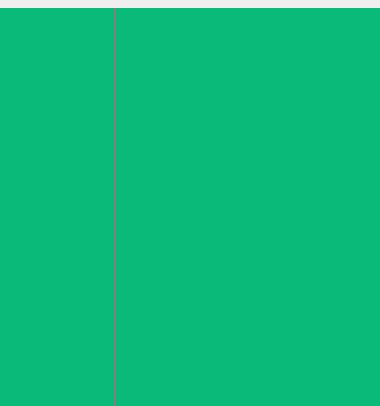
Additionally, we will launch awareness campaigns on issues such as health, education, and social justice. These campaigns aim to promote community involvement, encourage collective action, and create a more informed and proactive society.

To increase our impact, Deepalaya will expand operations to additional states, reaching more communities in need of our services. This geographical expansion will allow us to serve a larger population and address diverse community needs.

Strengthening partnerships is another key focus. We will welcome new collaborations and foster ongoing relationships with organisations that align with our mission. These partnerships will enhance the impact and reach of our programmes, providing additional resources and expertise.

# 29 Years

— EMBRACING DIFFERENCES —



# THANK YOU



Deepalaya.Purnia



91+ 9430059260



[www.wedeeepalaya.org](http://www.wedeeepalaya.org)



NH-31 Bypass Road, East of Newalal Chowk, Madhopara, Purnia, Bihar