



Laser Training Targets
www.2AG.FUN

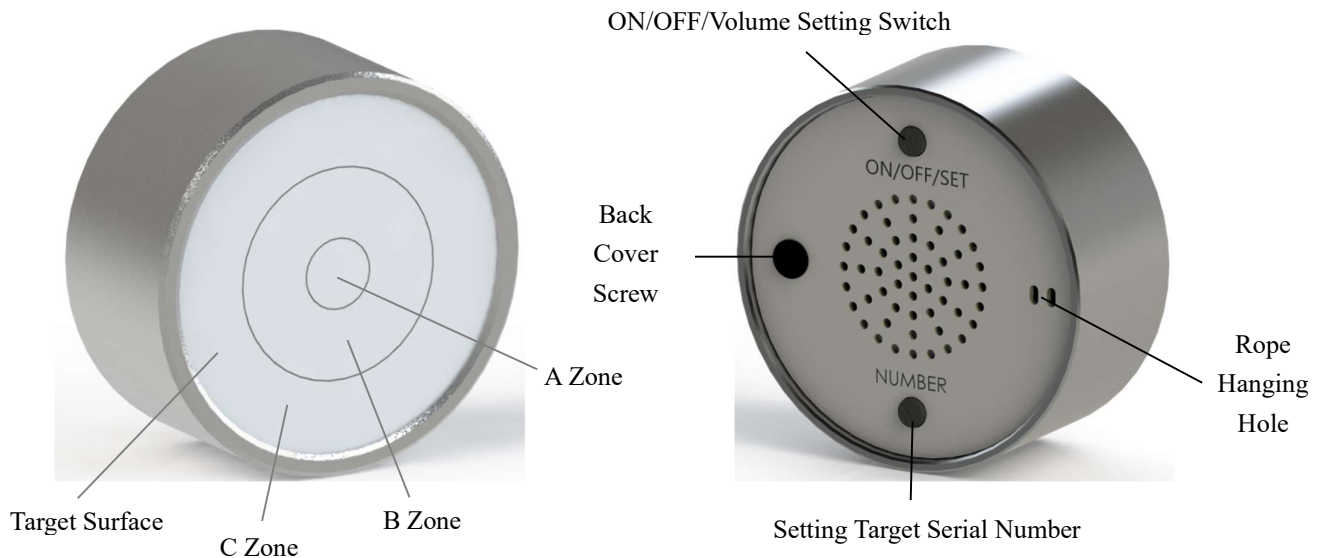
Single Electronic Laser Target Operation Manual

1. Laser Target Descriptions

The laser target is designed to work with red, green and IR laser system for indoor dry fire shooting practice.

Users can practice with single one laser target or multiple laser targets (max. 10pcs) controlled by a laser target controller base for interactive shooting training with a gun and a laser bullet or other laser system.

Runs by 2pcs CR123A batteries, our laser target is portable and easy to location. The immediate time feedback and precise 21 reaction points can effectively improve your shooting skill.



2. Laser Target Features

- * Aluminum alloy shell by silver oxidation, which prevails its high-end quality and durable.
- * Very simple industrial design shows its fashion in technology.
- * Precise sensing with 21 display points.
- * Load 2pcs CR123A batteries, highly optimized for general use.
- * Can be used alone or connect multiple targets for interactive training purpose.

3. Main Index Parameters

- | | |
|--|---|
| 1) Target surface size: | φ70.5mm |
| 2) Target sensing places: | 21 display points in ABC three ring zones |
| 3) Sensor Receiving and Indicates resolutions: | About 7mm |
| 4) Feedback Methods: | Light & Sound |
| 5) Power Supplies: | By 2pcs*CR123A Batteries |
| 6) Auto ON/OFF time: | Auto Shut-off after 30mins without operations |

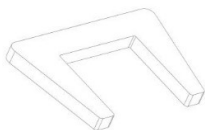


Laser Training Targets
www.2AG.FUN

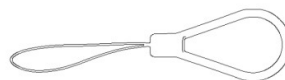
4. Package List:



a. Laser Target



b. Holder



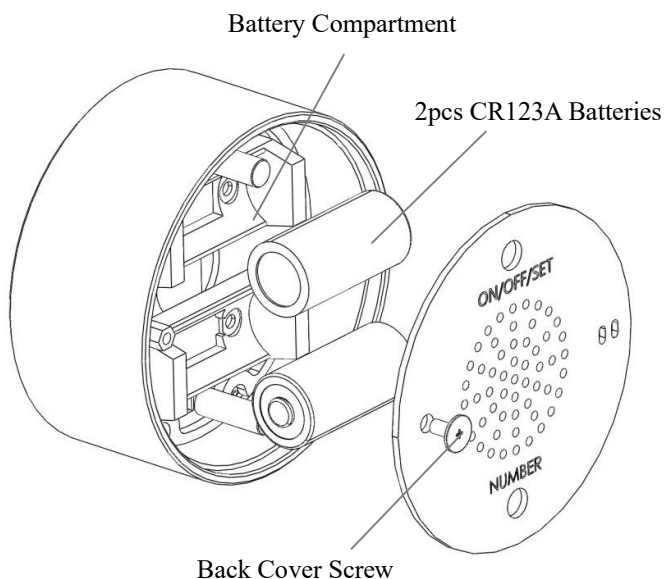
c. Hanging Rope



d. Screwdriver

5. Fast to Use

5.1 Install Batteries



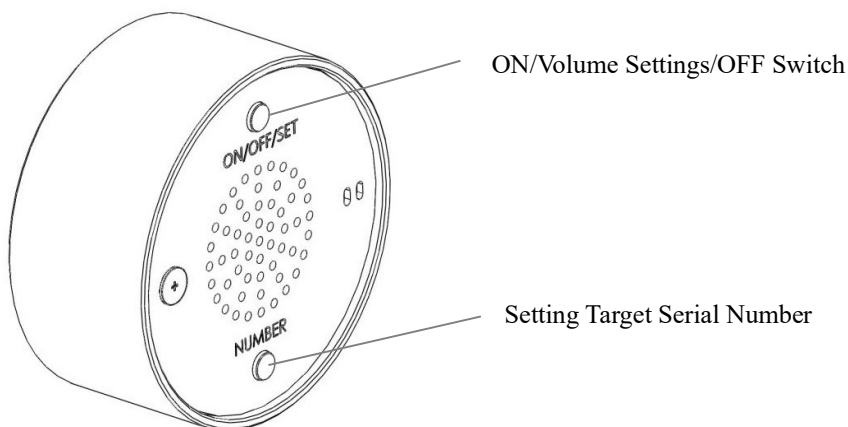
Following the above drawings,

- * Remove the back cover with the screwdriver in the package.
- * Load into 2pcs CR123A batteries based on the installation direction. Reinstall the rear cover and tighten the screw.

5.2 Switch ON/OFF



Laser Training Targets
www.2AG.FUN

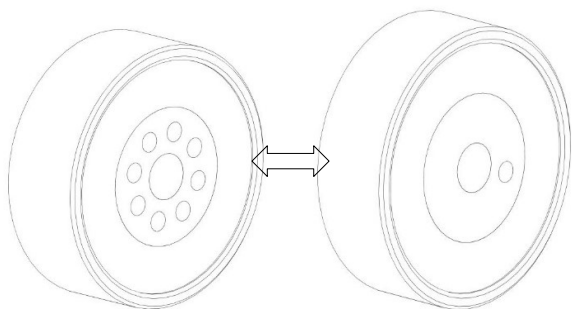


- * Short press the ON/OFF/SET Switch to start the target. Release the switch when hear a sound “Power ON”.
 - * Short press ON/OFF/SET Switch to adjust the volume, which has high, medium and low in three levels.
 - * If want to use with multiple targets for interactive shooting training, you can short press the NUMBER switch to set target serial numbers. And this operation needs to work with **a controller**.
- For example, if there are 5pcs targets connected by a controller:
Short press the 1st target “NUMBER” switch for 1 time, you will hear “ONE”, it means its serial number is 1;
Short press the 2nd target “NUMBER” switch for 2 times, you will hear “TWO”, it means its serial number is 2; and so on.
- * Long press the ON/OFF/SET Switch to power off the target.

※ Note:

- ① After one shot, just wait for 5sec., the target will reset and then you can shoot again.
- ② It will automatically shut down if no operations after 30mins.

5.3 How to use a Single Target?

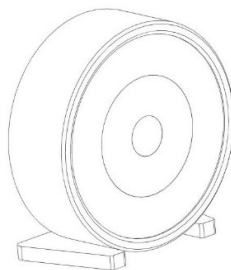


When turn on the target, B Zone, the center ring zone will light up, and then players can shoot.
Once the target is hit, it will display the last shot impact point. If no new shooting hits, the impact point will disappear automatically after 5 seconds and return to ready-to-shoot status.



Laser Training Targets
www.2AG.FUN

5.5 How to Stand the Laser Target?



- * If stand the target on a flat surface, put the holder under the target as shown in above picture.
- * If hang the target on a wall, make the hanging rope through the hole at the back cover.

6.WARNING:

- ✖ The product can not be used outdoors under strong light!
- ✖ The controller for multi targets interactive usage shall be purchased separately!

7.Trouble Shooting:

ISSUE	POSSIBLE CAUSES	SOLUTIONS
Target has no display.	Didn't power on the product.	Verify and startup the target.
	Low battery power	Change batteries and restart.
Abnormal target sound	Low battery power	Change batteries and restart.