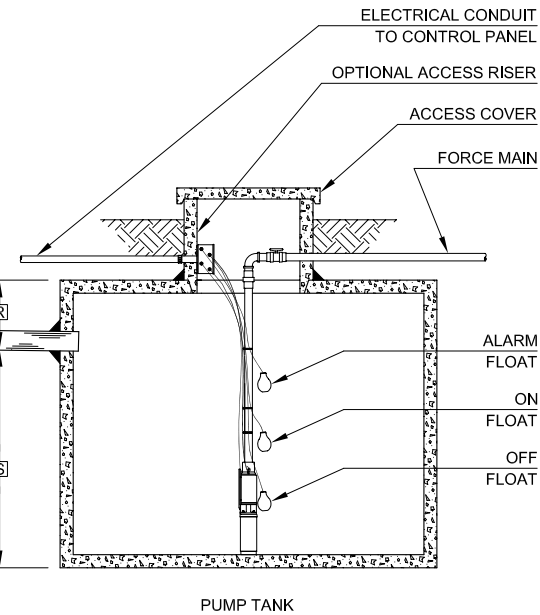


NOTE: SIMPLEX PUMP CONTROLS ARE REMOTELY LOCATED AND REQUIRE A DEDICATED CIRCUIT BREAKER. PUMP SIZE AND TYPE DEPENDS ON TOTAL DYNAMIC HEAD REQUIREMENTS.



NOTE: SOME CRITICAL DIMENSIONS ARE INTENTIONALLY LEFT BLANK TO BE FILLED IN PER INDIVIDUAL JOB SITE SPECIFICATIONS.

NOTE: TYPICAL PUMP TANK SHOWN. ACTUAL CONFIGURATION MAY VARY.

GENERAL NOTES:

- ① FALL THROUGH SINGULAIR® PLANT FROM INLET INVERT TO OUTLET INVERT IS FOUR INCHES. INLET INVERT IS TWELVE INCHES BELOW TANK TOP.
- ② TANK REINFORCED PER ACI STD. 318-99.
- ③ REMOVABLE COVERS ON RISERS WEIGH IN EXCESS OF SEVENTY-FIVE POUNDS EACH TO PREVENT UNAUTHORIZED ACCESS.
- ④ EFFLUENT DISPOSAL TO AN ILLINOIS RAISED FILTER BED PER IDPH CODE SECTION 905.95.
- ⑤ THE PUMP TANK MUST CONTAIN A MINIMUM VOLUME EQUIVALENT TO THE GALLON PER DAY TREATMENT CAPACITY BETWEEN THE ON FLOAT AND THE OFF FLOAT.
- ⑥ CHECK LOCAL REGULATIONS FOR SPECIFIC SYSTEM REQUIREMENTS.
- ⑦ CONTACT THE LOCAL, LICENSED SINGULAIR® DISTRIBUTOR FOR ELECTRICAL REQUIREMENTS.

PROJECT ENGINEER'S APPROVAL:
I (WE) HEREBY CERTIFY THAT THIS DRAWING HAS BEEN CHECKED AND IS APPROVED FOR USE IN CONFORMITY WITH THE CONTRACT DOCUMENTS.

DATE: _____

NAME: _____

CONTRACTOR'S CERTIFICATION:
I (WE) HEREBY CERTIFY THAT THIS DRAWING HAS BEEN CHECKED AND IS APPROVED FOR USE IN CONFORMITY WITH THE CONTRACT DOCUMENTS.

DATE: _____

NAME: _____

CRITICAL DIMENSIONS

A	1'- 0"	N	0'- 3"
B	2'- 9"	O	0'- 6"
C	2'- 8"	P	1'- 4"
D	3'- 7"	Q	4'- 8"
E	2'- 3"	R	
F	9'- 3"	S	
G	1'- 0"	T	
H	5'- 0"	U	
I	0'- 3"	V	
J	0'- 3"	W	
K	1'- 0"	X	
L	0'- 2"	Y	
M	4'- 6"	Z	

U.S. AND FOREIGN PATENTS PENDING		DESIGNED BY	BDS
		APPROVED BY	JMM
© MMX	SINGULAIR® BIO-KINETIC® WASTEWATER TREATMENT SYSTEM MODEL 960-500GPD WITH PUMP TANK	DATE	6-2-09
		SCALE	NTS

THE DRAWING IS THE PROPERTY OF NORWECO. IT IS TO BE USED ONLY FOR THE PROJECT AND SITE SPECIFICALLY IDENTIFIED HEREON. NO PARTS OF THIS DRAWING ARE TO BE REPRODUCED OR TRANSMITTED IN ANY FORM OR BY ANY MEANS WITHOUT EXPRESS PERMISSION FROM NORWECO.

PC-5-7115