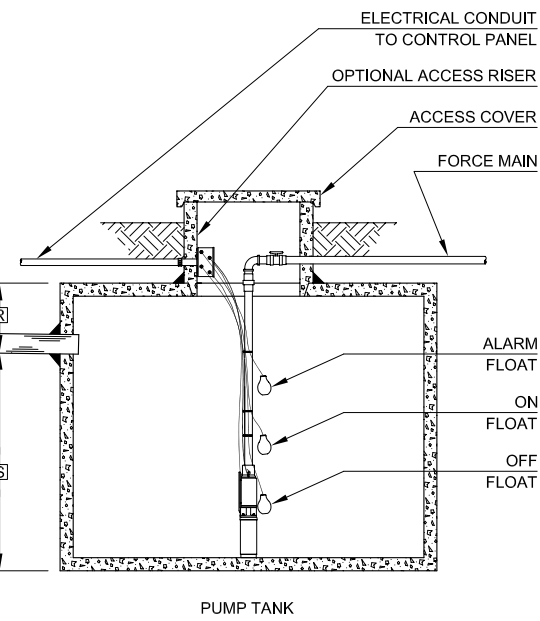
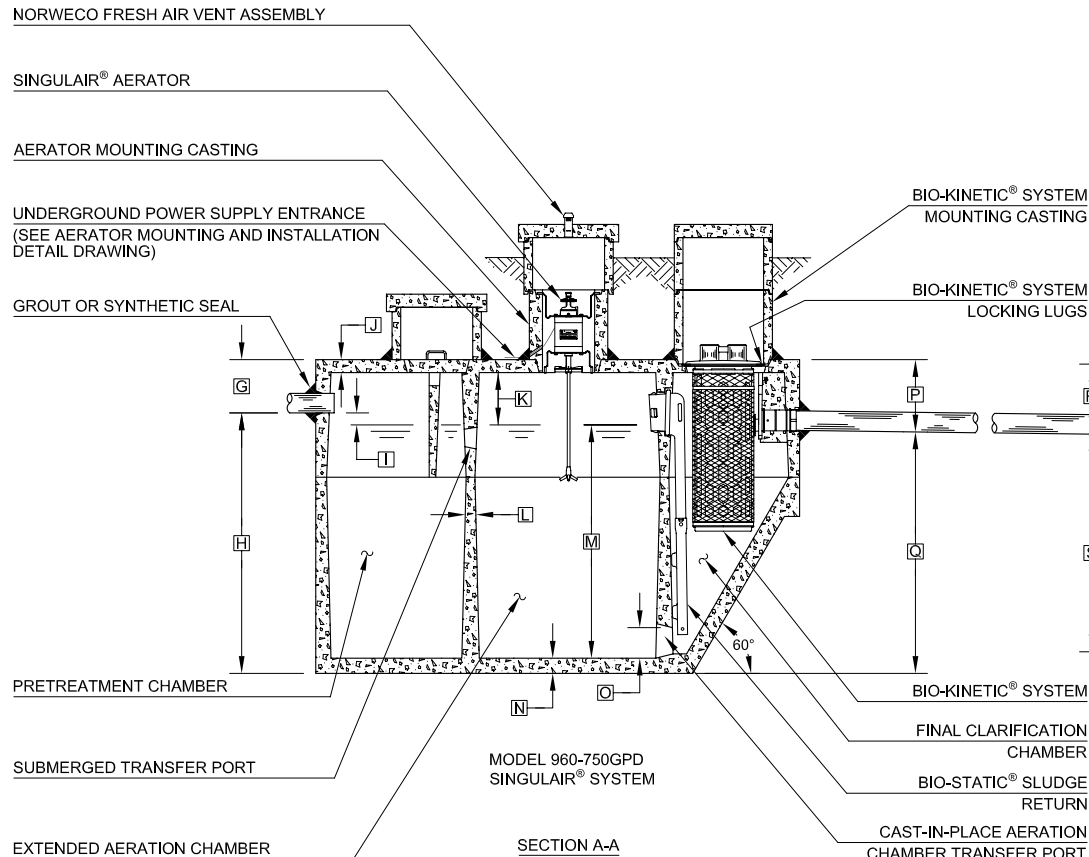


- GENERAL NOTES:**
- FALL THROUGH SINGLAIR® PLANT FROM INLET INVERT TO OUTLET INVERT IS FOUR INCHES. INLET INVERT IS TWELVE INCHES BELOW TANK TOP.
  - TANK REINFORCED PER ACI STD. 318-99.
  - REMOVABLE COVERS ON RISERS WEIGH IN EXCESS OF SEVENTY-FIVE POUNDS EACH TO PREVENT UNAUTHORIZED ACCESS.
  - EFFLUENT DISPOSAL TO AN ILLINOIS RAISED FILTER BED PER IDPH CODE SECTION 905.95.
  - THE PUMP TANK MUST CONTAIN A MINIMUM VOLUME EQUIVALENT TO THE GALLON PER DAY TREATMENT CAPACITY BETWEEN THE ON FLOAT AND THE OFF FLOAT.
  - CHECK LOCAL REGULATIONS FOR SPECIFIC SYSTEM REQUIREMENTS.
  - CONTACT THE LOCAL, LICENSED SINGLAIR® DISTRIBUTOR FOR ELECTRICAL REQUIREMENTS.



NOTE: SOME CRITICAL DIMENSIONS ARE INTENTIONALLY LEFT BLANK TO BE FILLED IN PER INDIVIDUAL JOB SITE SPECIFICATIONS.

NOTE: TYPICAL PUMP TANK SHOWN. ACTUAL CONFIGURATION MAY VARY.

**PROJECT ENGINEER'S APPROVAL:**  
I (WE) HEREBY CERTIFY THAT THIS DRAWING HAS BEEN CHECKED AND IS APPROVED FOR USE IN CONFORMITY WITH THE CONTRACT DOCUMENTS.

DATE: \_\_\_\_\_  
NAME: \_\_\_\_\_

**CONTRACTOR'S CERTIFICATION:**  
I (WE) HEREBY CERTIFY THAT THIS DRAWING HAS BEEN CHECKED AND IS APPROVED FOR USE IN CONFORMITY WITH THE CONTRACT DOCUMENTS.

DATE: \_\_\_\_\_  
NAME: \_\_\_\_\_

**CRITICAL DIMENSIONS**

|   |       |   |       |
|---|-------|---|-------|
| A | 1'-0" | N | 0'-3" |
| B | 2'-9" | O | 0'-6" |
| C | 2'-8" | P | 1'-4" |
| D | 3'-7" | Q | 5'-8" |
| E | 2'-3" | R |       |
| F | 9'-3" | S |       |
| G | 1'-0" | T |       |
| H | 6'-0" | U |       |
| I | 0'-3" | V |       |
| J | 0'-3" | W |       |
| K | 1'-0" | X |       |
| L | 0'-2" | Y |       |
| M | 5'-6" | Z |       |

U.S. AND FOREIGN PATENTS PENDING

**norweco**

SINGLAIR® BIO-KINETIC® WASTEWATER TREATMENT SYSTEM MODEL 960-750GPD WITH PUMP TANK

DESIGNED BY: JMM  
DATE: 6-2-09  
SCALE: NTS

© MMX

PC-5-7116