

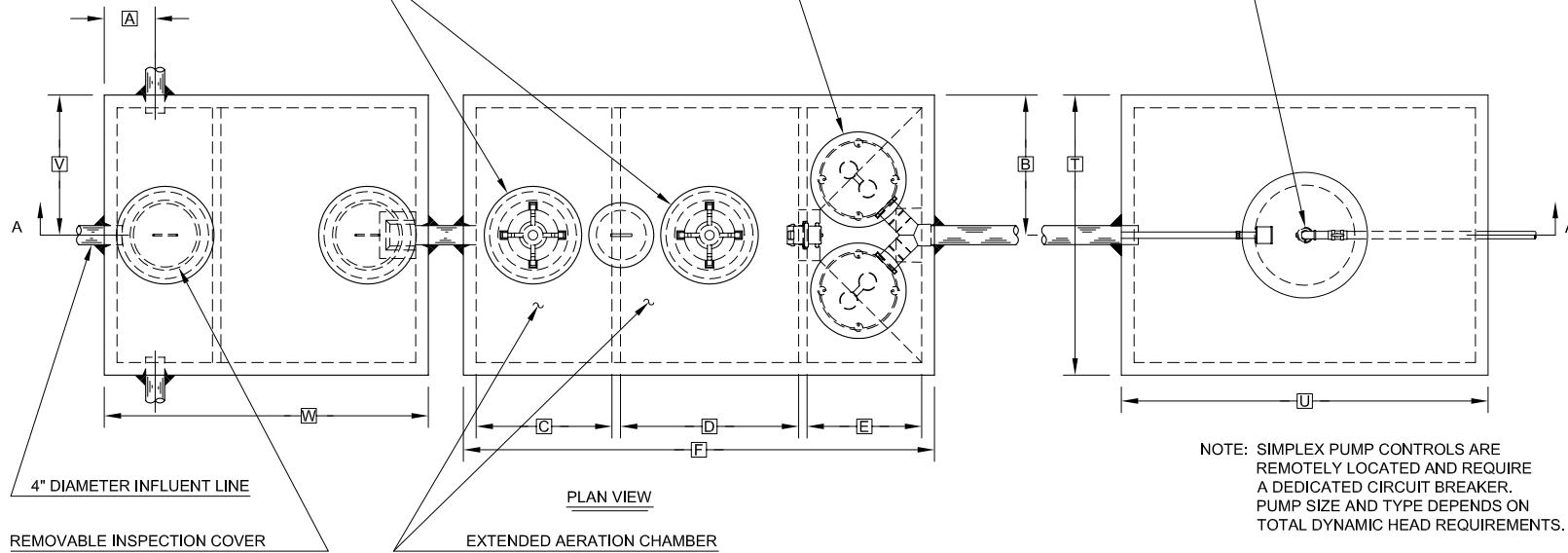
AERATOR MOUNTING CASTING AND COVER WITH FRESH AIR VENT ASSEMBLY

BIO-KINETIC® SYSTEM MOUNTING CASTING AND COVER

SUBMERSIBLE EFFLUENT PUMP

GENERAL NOTES:

- ① FALL THROUGH SINGULAIR® PLANT FROM INLET INVERT TO OUTLET INVERT IS FOUR INCHES. INLET INVERT IS TWELVE INCHES BELOW TANK TOP.
- ② TANK REINFORCED PER ACI STD. 318-99.
- ③ REMOVABLE COVERS ON RISERS WEIGH IN EXCESS OF SEVENTY-FIVE POUNDS EACH TO PREVENT UNAUTHORIZED ACCESS.
- ④ EFFLUENT DISPOSAL TO AN ILLINOIS RAISED FILTER BED PER IDPH CODE SECTION 905.95.
- ⑤ THE PUMP TANK MUST CONTAIN A MINIMUM VOLUME EQUIVALENT TO THE GALLON PER DAY TREATMENT CAPACITY BETWEEN THE ON FLOAT AND THE OFF FLOAT.
- ⑥ CHECK LOCAL REGULATIONS FOR SPECIFIC SYSTEM REQUIREMENTS.
- ⑦ CONTACT THE LOCAL, LICENSED SINGULAIR® DISTRIBUTOR FOR ELECTRICAL REQUIREMENTS.



NORWECO FRESH AIR VENT ASSEMBLY

BIO-KINETIC® MOUNTING CASTING

BIO-KINETIC® SYSTEM

ELECTRICAL CONDUIT TO CONTROL PANEL

SINGULAIR® AERATOR

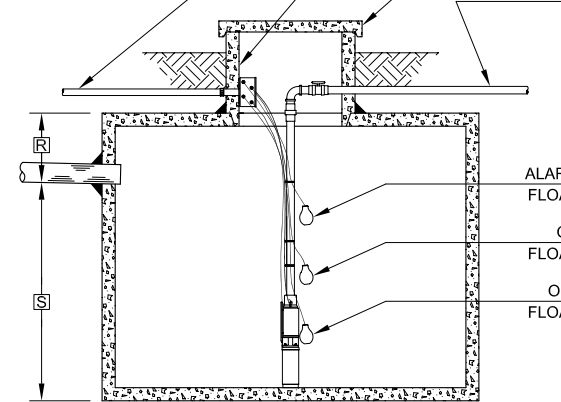
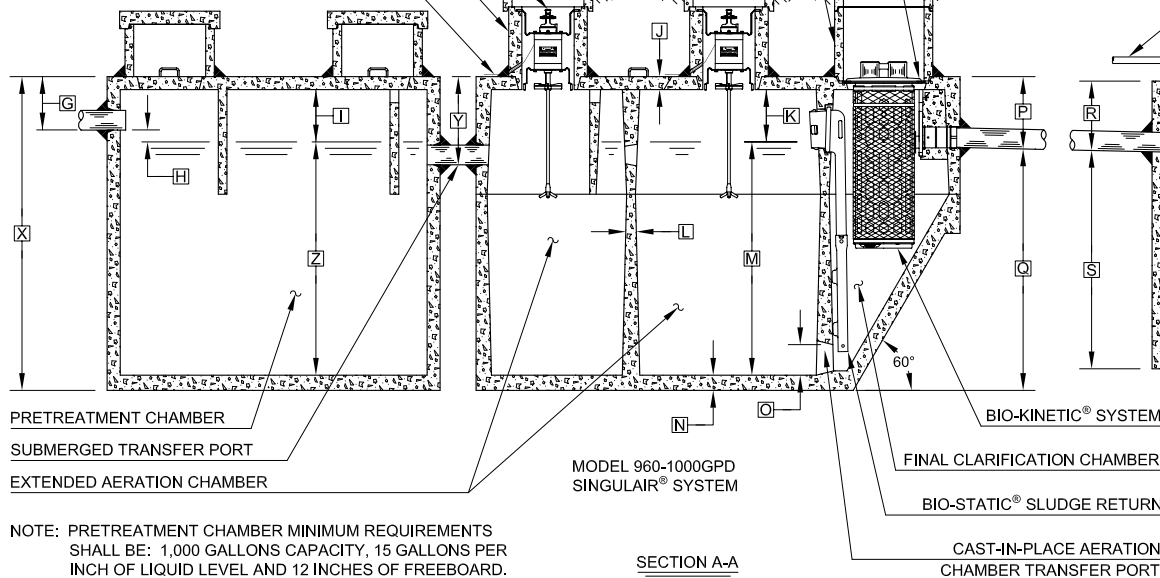
OPTIONAL ACCESS RISER

AERATOR MOUNTING CASTING

ACCESS COVER

UNDERGROUND POWER SUPPLY ENTRANCE

FORCE MAIN



PUMP TANK
NOTE: SOME CRITICAL DIMENSIONS ARE INTENTIONALLY LEFT BLANK TO BE FILLED IN PER INDIVIDUAL JOB SITE SPECIFICATIONS.

NOTE: TYPICAL PUMP TANK SHOWN. ACTUAL CONFIGURATION MAY VARY.

PROJECT ENGINEER'S APPROVAL:
I (WE) HEREBY CERTIFY THAT THIS DRAWING HAS BEEN CHECKED AND IS APPROVED FOR USE IN CONFORMITY WITH THE CONTRACT DOCUMENTS.

DATE: _____
NAME: _____

CONTRACTOR'S CERTIFICATION:
I (WE) HEREBY CERTIFY THAT THIS DRAWING HAS BEEN CHECKED AND IS APPROVED FOR USE IN CONFORMITY WITH THE CONTRACT DOCUMENTS.

DATE: _____
NAME: _____

CRITICAL DIMENSIONS

A	1'-0"	N	0'-3"
B	2'-9"	O	0'-6"
C	2'-8"	P	1'-4"
D	3'-7"	Q	4'-8"
E	2'-3"	R	
F	9'-3"	S	
G	1'-0"	T	
H	0'-3"	U	
I	1'-0"	V	
J	0'-3"	W	
K	1'-0"	X	
L	0'-2"	Y	1'-8"
M	4'-6"	Z	

U.S. AND FOREIGN PATENTS PENDING		DESIGNED BY	BDS
		APPROVED BY	JMM
© MMX	SINGULAIR® BIO-KINETIC® WASTEWATER TREATMENT SYSTEM MODEL 960-1000 GPD WITH PUMP TANK	DATE	6-2-09
		SCALE	NTS
<small>THIS DRAWING IS THE PROPERTY OF NORWECO. IT IS TO BE USED ONLY FOR THE PROJECT AND SITE SPECIFICALLY IDENTIFIED HEREON. NO PARTS ARE TO BE REPRODUCED OR TRANSMITTED IN ANY FORM OR BY ANY MEANS, WITHOUT WRITTEN PERMISSION FROM NORWECO.</small>		DATE	
		NO. OF SHEETS	PC-5-7117