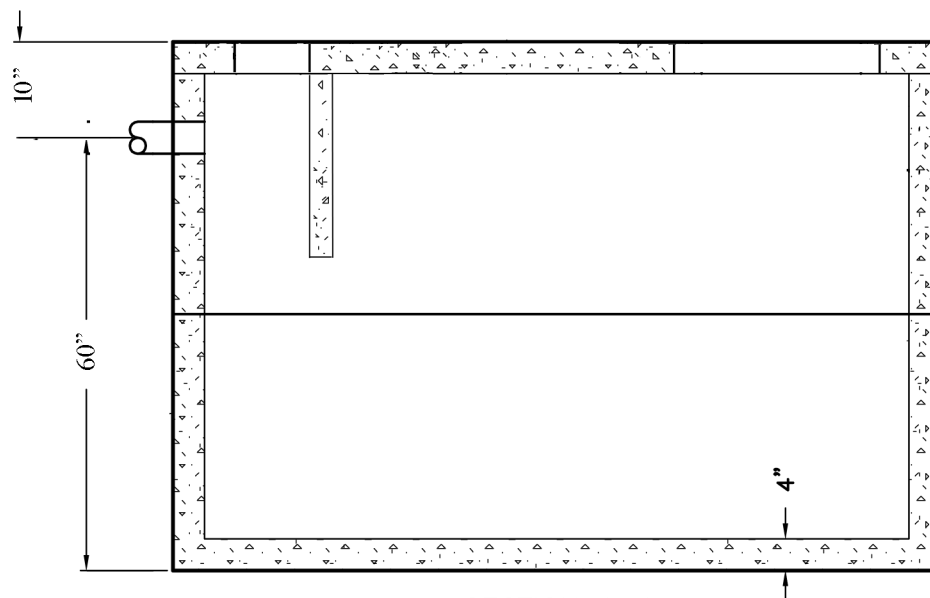


PLAN VIEW



SECTION A-A

GENERAL NOTES

1. 4" Rubber Seal Inlet (CAS 402)
2. Grade 60 3/8" Rebar on 8" Spacing on top and bottom and #10 6x6 wire mesh in walls
3. Structural Fiber throughout
4. 6,000 + PSI Concrete

1500 Gallon Step Tank

REX VAULT & MAUSOLEUM SERVICE , INC

Phone
(618) 783-2416
(800) 669-2416

P.O. BOX 323
NEWTON, IL 62448

Fax
(618) 783-3867
EMAIL: contactus@rexvault.com