



**WENDY  
FOX**

# St. John's **CONNECTIONS**

A monthly update from the people of St. John's UCC, Fullerton

**Volume 18 • Issue 149 • February 2025**

## **“A Time of Action! Let Light Shine!”**

**“Let your light shine before others,  
so that they may see your good works  
and give glory to God in heaven.”**

**- Matthew 5:16**

January 20, 2025, saw two important events take place. The nation inaugurated the 47th President of the United States on the same national holiday in which we remember the birthday of slain civil rights leader, Nobel Peace Prize recipient, pastor, teacher and moral leader, the Rev. Dr. Martin Luther King, Jr. The vision for people and the nation these two icons of our society share could not be more different. And yet, millions of people embrace their respective messages. In our faith, guided by God’s love, we want to find a way forward, with hope and optimism.

One might think the challenge of finding common ground amid the great chasm of polarization in our nation, and growing in our world, nearly impossible. However, we are people who each possess light... the Light of Christ! We are people who despite the condition of our circumstances still call each other and those around us to embrace a different reality. I remember the first time I participated in a march in my community. It was in the days immediately following the mass shooting at Columbine High School in Colorado, April 20, 1999. I joined with people of many faith traditions and no claim to faith at all to stand in solidarity with those who were grieving such incredible loss and feeling helpless in the face of evil deeds.

Just a year earlier in 1998, both Matthew Shepard, a young gay college student in Wyoming, and James Byrd, Jr, an African American man in Texas, were each murdered by persons with hateful intentions to harm, kill and bring terror to many. I remember how I felt in each of these events and with the first school shooting that we called a massacre.

These events changed something in me and called for something significant from me. I knew my life actions were going to change and I could not be one to keep quiet and sit on the sidelines. I’ve never thought of myself as an introvert, but if you knew me when I was in my teens and early 20s, I wasn’t exactly an extrovert either. I recently read a blog where a pastor shared the experience of taking action in a cause for justice and human rights and felt completely inadequate and scared. Perhaps you can identify with these feelings.

All of the activists that I admired were people who could boldly protest, who could make friends out of a room of strangers, who loved to socialize and connect and inspire, who were visible and loud. And I always felt like I didn’t measure up. That I couldn’t measure up. I wanted to take a stand

and publicly commit to support those most marginalized and most often oppressed. I came to understand that my words carried little significance if my actions did not accompany them. So how do we DO ACTIVISM? How can we be useful in the work of justice while still being ourselves? Whether we ever participated in a March on Washington as Dr. King and many hundreds of thousands of others did, or a march to end gun violence, a march for equality, a march for women's rights, a march against corporate greed and for workers' rights, a march for climate justice or any other justice issue, we let our light shine with our words and our actions.

Here's some things I've learned in my years of growing activism and standing up for my faith and values as I stand up for people:

### **I NEED TO EDUCATE MYSELF**

I became extremely well-versed on the issues I care about and sought to understand how others experience things differently from me. I read books and articles, learned as much as I could, and looked for ways to better understand others' perspectives and find common values and goals.

### **I AM EFFECTIVE TALKING WITH PEOPLE ONE TO ONE**

Small talk kills me. I hate it. However, get me connected to one other person with whom I can have an in-depth conversation and I am IN MY ELEMENT. As much as I love public speaking and sharing my faith journey, whenever we can have one to one conversations in the work for justice, we can often hear others and understand common concerns and goals, and connect at a deeper level.

### **I WRITE LETTERS AND MAKE CALLS**

When there's something that concerns me deeply, I try to put my thoughts into words I can share, by letter or by phone conversations. These are not just to politicians (though you can definitely do that, too) but to people I care about. They know something matters to me because I'll take the time to connect through more than a thumbs up or heart on Facebook. I look for ways to let my words open the way for further conversation, to meet together and break bread, not win an argument.

### **I INVITE OTHERS TO TAKE PART WITH ME**

I wish I could tell you that I use my wittiness, the knowledge I have of the issues, and my skill with words to make the best protest signs on the block. Not so much! That's where I rely on the skills of others, like my husband, Bill. Whether it's a creative story, a colorful sign, a witty slogan, a great film or video, a heartwarming story, or something else, visual images do help others see a different future with hope and possibility. Invite the creativity of others to supplement each of your gifts for the cause that matters to you.

(continued)

## GET UNCOMFORTABLE

Really? Absolutely!

Sometimes we all have to work outside of our comfort zone. Sometimes we have to be willing to grab the microphone, take a risk, join the march, and risk ourselves. It's uncomfortable at first. Sometimes messy. And it's very, very necessary. If we are uncomfortable saying it, standing up for it, writing about it, protesting it... imagine how the people who are living with the oppression, the injustice, the systemic racism, the overwhelming need must feel.

When I risk getting uncomfortable, I discover my own power and even though my voice may quiver, I know I can speak.

## GET INVOLVED

Whether I can take part in a cause personally, I try to find a way to get involved. I want to find a way to be a part of the struggle, and not simply sit on the sidelines. I want to create meaningful work to do in a way that best uses my gifts. ALL of us are needed in the fight for justice, not just extroverts.

## STAND ON THE SIDE OF LOVE

No matter how challenging the situation, or bitter the divide, being people who let light shine through our lives means we stand on the side of love. We lead with love for God and ALL people, not just those with whom we agree. EVERY person is one who is loved by God and we should be trying to do the same. So that will often mean we focus on people, rather than the problem. We lead with loving them, rather than how we see something wrong with their ideas or actions. And when I can't figure out how to love, I pray for God to love them even more.

In the coming months and years, we may find our lives at odds with others and our tolerances tested. We may feel the grief of a dream that society around us may seem to have discarded. We may believe that our greatness as a nation is being challenged and being put through the refiner's fire. Whatever we feel and whatever the challenges, we know this... we are the people of God who choose to love God, love our neighbors and love ourselves in our journey of faith. We are those who take action and let our light shine. We are St. John's UCC, Fullerton, and...

**"We Worship, We Love and We Serve ~  
No Matter What!"**

Yours in grace and hope,

*Steve Davis*

Rev. Steven Davis, Senior Pastor





## On The Cover...



### WENDY FOX

Hi! I am your 2025 Consistory President, Wendy Fox. My family, husband Keith, daughter Kendra and son Elijah have been members of St John's since November 2009.

This is my 2nd term on the Consistory. I was also involved in the Search Committee in hiring Pastor Steve. Didn't we do a great job!!! Among other things, when my kids were young, I was involved with Faith Formation and even Youth Group with the younger kids way back when. I still

help teach the Faith Formation children.

Outside of church I work full time as a Project Manager at a small database company located in Nazareth PA. If I am not at work or church you can normally find me on some sort of sports field for my kids, between softball, soccer and Track and Field.

Growing up, I was baptized and confirmed in a Lutheran church in Unionville PA. My parents were very active in their church, and I think that is where my push came from. Unfortunately, both my parents have passed, but I think they are looking down on me smiling, hopefully.

### Deadline for March Newsletter

If you would like to contribute an article for the March newsletter, please email your single-spaced submission in PDF, DOC, RTF or plain text format to: - [newsletter@sjuccf.org](mailto:newsletter@sjuccf.org) by Sunday, February 9.

Photos or graphics for your article should be sent as attachments to your emailed submission. Please do not send inside a .DOC file.

[Updated style guidelines here](#)

## Table of Contents

|   |    |
|---|----|
| Annual Meeting - February 2 . . . . .                                     | 37 |
| "A Time of Action! Let Light Shine!" . . . . .                            | 2  |
| Church Chuckle . . . . .  | 40 |
| Convalescent & Homebound Residents . . . . .                              | 11 |
| CWS Cleanup Bucket Kits . . . . .   | 35 |
| Deadline for March Newsletter . . . . .                                   | 5  |
| Dine & Donate at Texas Roadhouse . . . . .                                | 27 |
| Faith Formation Schedule . . . . .  | 8  |
| February Birthdays . . . . .  | 30 |
| February Wedding Anniversaries . . . . .                                  | 31 |
| February Worship Series - "LET LIGHT SHINE" . . . . .                     | 14 |
| Giving Made Easy! . . . . .   | 29 |
| Grocery Shopping is as Easy as A, B, C . . . . .                          | 27 |
| Help Us Thrive In 2025! . . . . .   | 18 |
| How Did Our St. John's Family Do? . . . . .                               | 36 |
| Inclement Weather Notices . . . . .                                       | 20 |
| "Keeping You in Stitches" News . . . . .                                  | 24 |
| Lady PEEPS February Meeting . . . . .                                     | 25 |
| Looking to Deepen Your Connection with St. John's? . . . . .              | 13 |
| Men's Breakfast Group . . . . .   | 25 |
| Mission Moment . . . . .  | 32 |
| Now Hiring (Custodian) . . . . .  | 25 |
| Now Hiring (CELC) . . . . .   | 31 |
| Pastie Sale . . . . .   | 17 |
| Sartorial Savvy Too? . . . . .  | 19 |
| "SaveAround Lehigh Valley" Books . . . . .                                | 28 |
| "Souper Bowl of Caring" . . . . .   | 34 |
| Spaghetti Dinner Fundraising Event . . . . .                              | 7  |
| Staff Contacts . . . . .  | 39 |
| St. Johns Kitchen Corner . . . . .  | 22 |
| Sunday Socials - Sharing The Love! . . . . .                              | 10 |
| Tailgate Party & Church Family Feud Night . . . . .                       | 23 |
| Together We Are Stronger in 2025 <u>You</u> Make the Difference . . . . . | 12 |
| Update on Other Mission Outreaches . . . . .                              | 35 |
| Verso-Chat Bible Study . . . . .  | 16 |
| Well Done! Conner Strauss Honored . . . . .                               | 19 |
| Whitehall-Coplay Hunger Initiative . . . . .                              | 36 |
| Whitehall Food Pantry . . . . .   | 35 |

# Spaghetti Dinner



Fundraiser for St. John's Music Ministry

**Sunday, February 23<sup>rd</sup>, 2025**  
**11am until 2pm**

Adults: \$10.00

Kids under the age of 12: \$5.00

Meal includes  
Salad, Bread, Spaghetti and Meatballs,  
Dessert



## for Children, Youth & Adults & Worship Celebrations!

Here's what we have to look forward to as we engage in faith formation and worship together.

**8:30am Adult Faith Formation** - The Friendship Sunday School Class meets in Room 201, to accommodate those with physical mobility needs. All are welcome to topical studies, biblical reflection and group discussion, led by various class members. Anyone needing assistance, please use the Grape Street elevator entrance and come to the sanctuary level. There's always great conversation and some tasty treats to start your Sunday morning well! Contact Tom and Emilie Moyer for more information.

**9:30am Children's Faith Formation** Children gather with the congregation in worship through the Children's message, then are let to Room 101 and our "mini theater" room for the weekly topic lesson. "HOLY MOLY" is our curriculum theme this year! We believe our children are blessings, and we want them to grow in our love and the love of God. Please see our "HOLY MOLY" article for more details or contact Rev. Becca Stephens or Wendy Fox.

The children's table is set up in the Parlor for activity if desired for those who choose to remain during worship with parent supervision for any children not participating in regular faith formation activities. "Kids Busy Bags" are also available at the welcome table.

## REMINDER TO PARENTS FOR COMMUNION SUNDAYS.

Children who attend “Holy Moly” on the 1st Sunday of the month when the congregation celebrates the sacrament of Holy Communion will be brought back to the sanctuary to join their family in worship. We know some parents welcome their children participating in the sacrament. Others want their children to wait until they are confirmed or until they have a stronger understanding of the meaning of this sacred meal of love and grace.

At St. John’s UCC, Fullerton, we observe an OPEN Communion Table, which means that ALL PERSONS, regardless of age or full understanding of the sacrament, are welcome to receive. After all, how many of us as adults in our faith can fully express or explain the significance of this sacred meal. Children will have an abbreviated lesson on the first Sunday of the month to accommodate their participation in Holy Communion, as those who observe in participation or as those who receive in participation. We have both wine and grape juice in the trays to meet the needs of all.

**9:30am Morning Worship** - Our faith community gathers to Worship, Love and Serve every Sunday morning! We have a place for you, one and all, and YOU ARE... WELCOME HERE! We have created places in the congregational seating for those with mobility issues and assistance support. We are working to make our spaces and worship experience more accessible for everyone, including those with hearing impairment.

Join us each week in the gathering spaces, the classrooms, the sanctuary, online, and with Sunday Social time following worship in Fox Hall. We welcome you in to the experience of God’s love through St. John’s.

**11am Confirmation Class for 7th & 8th Graders** - Affirming Faith through Confirmation Class held in the third-floor Youth Room.

ALL YOUTH are welcome to come to the youth room during our Sunday Social time and share with our Confirmation Class as well as spend time with other youth and grow in your faith.



Confirmation Class participants will be visiting with you during our Sunday Social time. Please look for Nicholas Santee, Aiden Hannis and Lucas Williams in the minutes before we move to our class sessions each week, or on 4th Sundays when they generally have more time to connect with the congregation. Pray for them by name each week for this time of exploring and affirming their own faith. Express your thanks for their worship participation and leadership. Join them in the journey of discovery to affirm their faith in God through Jesus Christ.

Confirmation sessions continue through the end of May with class lessons, worship experiences, service projects, church life, and learning with friends, leaders and mentors. These young men will look to YOU, the people of St. John's, to model what faith looks like. They will witness how you WORSHIP, LOVE and SERVE to create your own "No Matter What" kind of faith. What we live before them matters every single day!

As we make this Affirming Faith journey together, you are invited to get to know these guys and help them know who we are and how our lives have been changed in the love of God.

### **SAVE THE DATE!**

Our first QUARTERLY YOUTH NIGHT will be Saturday, February 8, from 6-9pm for a St. John's Church Family Feud Night! We will have a Super Bowl Theme and invite you to come dressed in your favorite team attire! [Read more about the "Tailgate Party and Church Family Feud Night"](#) and join us for food, fun and friendship.

## **Sunday Socials - Sharing The Love!**

### **Sharing With Friends After Worship**

Every week following worship, we have the opportunity to connect with our faith community in new ways. Our gathering time after worship continues to meet vital needs - to build relationships and understanding - to welcome people to discover a more open circle of connection. We love the time to visit around the tables and enjoy good food. It always blesses us to visit with different people and get to know new friends.

Our Sunday Social events following worship provide the perfect opportunity to put a name and face together and get to know one another better. Come to Fox Hall following worship and share in the food and fun.

Sign up today to help host a Sunday Social as an individual, family or group using the sign up sheet located on the red display board at the back of the sanctuary. Nothing elaborate is needed. Our gatherings have been both simple and extravagant. Some have had themes, while others simply brought out old favorites to share with coffee, juice and conversation, the savory and healthy and the sweet and indulgent.

Please take a look for available Sundays this month and sign up to help. Invite someone to partner with you. If you have enjoyed the love and efforts of others, consider signing up with a friend to help share this experience, or call the Church Office and let Alison know what Sunday you want to provide refreshments. Colleen Kulhamer is always happy to help orient to the church kitchen.



## Convalescent & Homebound Residents

People who would welcome receiving a greeting card:

Shirley Abel  
Larry Albright  
Phyllis Ambearle  
Anita Beil  
Clarence Biehn  
Sherry Castello  
Sandra Diefenderfer  
Shirley Downing  
Jeanne Fischl  
Milton Focht  
Sally Gibson

Ron Glass  
Gus Geissinger  
Roberta Habernern  
Lucille Hicks  
Geraldine Keim  
Adrianne Kiesbar  
Emma Repp Kuczek  
Jean Litzenberger  
Bill Meckes  
Gayle Mihulec  
Dale Millham

Karen Moyer  
Mary Jane Ott  
Marilyn (Jean) Piskula  
Helen Ryer  
Madeline Slivka  
Bert Smith  
Leona Snyder  
Nancy Weaver  
Bonnie Weikel  
Arline Yoder

To protect privacy, please contact the church office for a listing with mailing addresses.

## **Together We Are Stronger in 2025** **You Make the Difference**



### ***Together, We Are Stronger!***

Dear Friends,

Together, we are building a world of love, hope, and justice. This is holy and needed work we share. With every opportunity we have to express our gratitude to God, the generosity of this congregation continues to make the difference in our church, community and world.

Our goal every month is to surpass our basic needs and grow to expand our ministry and make a difference in more lives. This can't happen with the actions of only a few, it takes all of us being part of making the difference.

The Stewardship and Finance Committee and the Consistory leaders come to you with hope and the expectation that we can each be part of reaching our financial and ministry goals in 2025 by every person stretching just a bit. Our Treasurer recently reminded us of the ease of what could be possible to return us to a more secure financial outlook. We are talking about what most would see as a "small increase" each week in our contributions.

- Thank you for your generosity with year-end gifts in 2024!
- Thank you for increasing your gifts where possible on a regular basis for 2025!
- Thank you for becoming an Automatic Contributor!
- Thank you for doing your part with special donations from your heart!
- No gift is too small, and every contribution makes a difference.

***Yours together as we worship, we love and we serve,***

**The Stewardship and Finance Committee**  
**The St. John's Consistory leadership**  
**Rev. Steve Davis**

## Looking to Deepen Your Connection with St. John's?

Have you been considering how to become more involved with the St. John's congregation? Are you ready to officially join our faith family and enter into a covenant of community, service, and shared purpose?

We invite you to join Pastor Steve for an opportunity to learn more about St. John's and what it means to be part of our church family. During these sessions, you'll gain insight into the guiding principles we live by, known as the 5Gs:

**G**ather in faith and fellowship.

**G**ain understanding and build relationships.

**G**ive generously of your time, talents, and treasures.

**G**row through acts of compassion and service.

**G**o! Share God's love, grace, and hope with others.

### SESSION DETAILS

Choose any 2 of the 3 available sessions that work best for your schedule:

- **Wednesday, January 22 at 2pm**
- **Sunday, January 26 at 11am**
- **Wednesday, January 29 at 7pm**

You can attend either in person or online. This is a wonderful opportunity to deepen your understanding of our mission and community while preparing to officially become a member.

### MARK YOUR CALENDAR!

We'll celebrate our year in ministry together and welcome new members in covenant on Sunday, February 2 during worship.

Want to learn more? Check out this short video: [Watch Here](#).

We look forward to growing in faith and connection with you in 2025!

## February Worship Series - "LET LIGHT SHINE"

Our theme for worship in February continues to expand as we focus on our light and the hope we have because of God's love for us. We have Jesus, the "Light of the world," with us to guide us in faith.



### FEBRUARY 2

*Worship Celebration with Holy Communion  
& Receiving New Persons in Faith*

*Potluck and Annual Meeting in Fox Hall following worship*

*Jeremiah 1:4-10, Psalm 71:1-6,  
1 Corinthians 13:1-13, Luke 4:21-30*

### **"Let Light Shine! Going Against the Crowd"**

Standing for our principles of faith can often feel uncomfortable, even in the faith community. Jesus knew the call of God would challenge him and challenge us. We would need to know we are not alone when pushed to the edge. Come celebrate who we are as a community united in love and welcoming others to worship, love and serve in the spirit of Christ.



## FEBRUARY 9

*Souper Bowl of Caring Sunday!*

*Isaiah 6:1-8, (9-13), Psalm 138,  
1 Corinthians 15:1-11, Luke 5:1-11*

### **"Let Light Shine! Not Your Typical Fishing Story"**

In the moments of life when our name is called, do we eagerly get on board or try to find a way to get the hook out of our mouth? Jesus' invitation to each of us is to join him in a life-changing way of welcoming people to follow him. Come celebrate the way of faith to which we each are called to follow Christ.

## FEBRUARY 16

*Jeremiah 17:5-10, Psalm 1,  
1 Corinthians 15:12-20, Luke 6:17-26*

### **"Let Light Shine! When We Need More Power"**

Each of us has the Spirit of God at work in our lives, in order to improve the circumstances of others in the world around us. However, some days it feels like we're running on spiritual fumes and we need more power to keep going. Jesus' Sermon on the Mount takes place with people who come to him in search of something to sustain and renew them. Come celebrate who we are as those Jesus calls blessed.

## FEBRUARY 23

*Genesis 45:3-11, 15, Psalm 37:1-11, 39-40,  
1 Corinthians 15:35-38, 42-50, Luke 6:27-38*

### **"Let Light Shine! Love That Empowers Us"**

The headlights on our car help us see forward and help others see us as well. When our faith shines before others, does it help them see and experience God in ways where they are drawn to love and light? Does our faith empower us with love and help others experience God's love? Come celebrate the love of God that shines through with power!



## **God Is Still Speaking...**

**with Verso-Chat Bible Study - Wednesdays, 9am**

The lectionary readings inspire our walk of faith during the season of Epiphany, guiding us this February. Using the Revised Common Lectionary readings for the Sunday worship services,

<https://lectionary.library.vanderbilt.edu>

Verso-Chat helps us experience the beloved community of God and the Spirit of God speaking to us and through us.

Our weekly studies continue on Wednesday mornings, exploring the scriptures which always help us to discover our “still speaking” God. Verso-Chat is another great Faith Formation option to help us grow. Maybe you’re not a “Sunday School” person or don’t feel like you know much about the Bible. Questions are welcomed in our study time! We laugh! We learn! We grow in our faith together! We welcome you to this time of sharing with us.

ALL are welcome to enhance your experience of worship by joining our weekly Verso-Chat Bible Study. Each week is it’s own contained experience to discover God’s “still speaking” words. You will find the “Verso-Chat” LINK BELOW and on the website to participate. Let’s study and chat about the verses of scripture together!

<https://us02web.zoom.us/j/81571428042>



# **VERSO-CHAT**

## Pastie Sale

It's time for our spring Pastie Sale. These traditional turnovers are made by hand at the Mr. Pastie bakery in Pen Argyl and come frozen. If you don't have time to cook, just pop these pasties in the oven for a quick, delicious meal. You can choose from the following:

| Item                  | Description  | Size   | Cost   |
|-----------------------|--|--------|--------|
| Traditional Beef      | Ground beef, potatoes, onions  | 12 oz. | \$7.25 |
| Beef (no onion)       | Ground beef, potatoes  | 12 oz. | \$7.25 |
| Traditional Chicken   | Chicken, peas, carrots, potatoes, onions, gravy                          | 12 oz. | \$7.25 |
| Italian Sausage       | Pork sausage, green peppers, potatoes, onions                            | 12 oz. | \$7.25 |
| Traditional Ham       | Naturally-smoked ham, onions, cheddar cheese, potatoes                   | 12 oz. | \$7.25 |
| Chicken Cordon Bleu   | Chicken, Swiss & American cheese, ham, potatoes, onions                  | 12 oz. | \$7.25 |
| Cheeseburger          | Burger, American cheese, onions, potatoes                                | 12 oz. | \$7.25 |
| Philly Cheese Steak   | Steak, potatoes, pepper, American cheese, onions                         | 12 oz. | \$7.25 |
| Mexican               | Beef, beans, cheddar cheese, onions, peppers, tomato, taco sauce         | 12 oz. | \$7.25 |
| Pizza                 | Pepperoni, sausage, peppers, onions, mozzarella cheese, pizza sauce      | 12 oz. | \$7.25 |
| Veggie Melt Pastie    | Peas, carrots, corn, green beans, onions, broccoli, cauliflower, cheddar | 12 oz. | \$7.25 |
| Spinach Melt Pastie   | Spinach, potatoes, onions, cheddar cheese                                | 12 oz. | \$7.25 |
| Fruit Turnover Pastie | Choose from apple, cherry or blueberry                                   | 6 oz.  | \$4.25 |

An order form was in the January newsletter and is on the church's website and on the table in the lounge area. Payment is due with your order with checks payable to St. John's UCC, Fullerton. You can return your order form and payment to the church office, place it in the offering plate, or give it to Carol Raszler. Please be sure to specify your pick-up date on the form—either Thursday, March 27, or Sunday, March 30. Deadline to place your order is Sunday, February 23.



If you have any questions, contact Carol Raszler at (610) 393-7572 or email [craszler@aol.com](mailto:craszler@aol.com)

# Help Us Thrive In 2025!

## Because of You!



At our Annual Congregational Meeting, we will celebrate the ministry we have that is transforming lives. We have approved a budget for 2025 with the full understanding of what is required of us to meet our goals of sustaining and expanding our ministry opportunities. Week after week, Pastor Steve has shared in worship examples of how our generosity is changing lives. Our goal each month has been to meet or exceed \$22,500 in monthly offering donations. To do this, Sue Weldner, our Treasurer, shared how our collective increase of a few dollars will make a big difference.

With the deficit we experienced in 2024, we are asking everyone to consider increasing your generous support by 4%. So, if you give \$25 each week, you increase it to \$26. If you give \$50 each week, you increase it to \$52. These small increases may not be possible for everyone, but we believe most all of us who regularly participate in worship can make this adjustment for 2025.

Because of you... we've grown our ministry activities in exciting ways. Yet we still need to grow our participation and financial support in 2025 in order to expand our outreach to children and youth, to more effectively serve our homebound members, and to develop new ways of connecting with others in our community. We know that Together We Are Stronger... because of YOU!

Please consider becoming an "Automatic Contributor" through your giving if you do not do so already. Michelle Gutekunst and others will be happy to help you get that transaction process set up. It's easy and reliable, and most importantly, consistent support for our ministry.

## Well Done! Conner Strauss Honored



Congratulations to all the Whitehall High School football seniors and to Conner Strauss for receiving the Scholar-Athlete of the Year award. Conner, son of Brian and Bonnie Strauss, has been a dedicated member of the Whitehall Zephyrs, playing as an offensive and defensive lineman. In addition to his football achievements, Conner has contributed to the school's baseball and basketball teams, demonstrating his versatility and

commitment to athletics.

The Whitehall Zephyrs concluded the 2024-2025 football season with a 4-7 overall record, showcasing determination and teamwork throughout the season. We extend our best wishes to Conner and all the seniors as they embark on their future endeavors.

## Sartorial Savvy Too?



Members of the STARs team received a fun gift from Bill and Lori Fink.

Elijah's shirt says, "Don't mess with the church sound guy. He'll mute you".

Bill's says, "My job is to make the pastor sound good"

With wardrobe like this, the STARs team is turning up the volume on style and humor!"

**STARs STANDS FOR  
ST JOHN'S - TECHNICAL - ARTISTIC - RESOURCES!**



# February

Sunday

Monday

Tuesday

Wednesday

## Inclement Weather Notice

If inclement weather requires cancellation of church services, notices will be on Channel 69 and on the website [www.wfmz.com/weather/storm](http://www.wfmz.com/weather/storm)

|  |   |  |  |
|--|---|--|--|
| <b>2</b><br>8:30am Friendship Class<br>9:30am Children's Faith Formation<br>9:30am Sunday Worship<br>10:30am Annual Meeting and potluck  | <b>3</b>  | <b>4</b><br>9:30am Staff Meeting<br>6:30pm Stewardship and Finance                 | <b>5</b><br>9:00am Verso Chat<br>12:00pm Painting<br>6:00pm Painting G<br>6:30pm Zumba-Fo<br>7:00pm SAA-Recov<br>Support-Room 302                      |
| <b>9</b><br><b>Newsletter deadline</b><br>8:30am Friendship Class<br>9:30am Children's Faith Formation<br>9:30am Sunday Worship<br>10:30am Social Hour/<br>Souper Bowl of Caring<br>11:00am Confirmation Class | <b>10</b>   | <b>11</b><br>1:30pm Staff Meeting<br>6:00pm Elders<br>7:00pm Consistory            | <b>12</b><br>9:00am Verso Chat<br>12:00pm Painting<br>6:00pm Painting G<br>6:30pm Zumba-Fo<br>7:00pm SAA-Recov<br>Support-Room 302                     |
| <b>16</b><br>8:30am Friendship Class<br>9:30am Children's Faith Formation<br>9:30am Sunday Worship<br>10:30am Social Hour<br>11:00am Confirmation Class  | <b>17</b><br><b>Office closed</b><br>6:00pm "Fun-raising" Committee | <b>18</b><br>9:30am Staff Meeting<br>10:00am Community of Practice<br>6:30pm PEEPS | <b>19</b><br>9:00am Verso Chat<br>12:00pm Painting<br>6:00pm Painting G<br>6:30pm Zumba-Fo<br>7:00pm SAA-Recov<br>Support-Room 302                     |
| <b>23</b><br>8:30am Friendship Class<br>9:30am Children's Faith Formation<br>9:30am Sunday Worship<br>10:30am Social Hour<br>11:00am Music Ministry<br>Spaghetti Dinner  | <b>24</b>   | <b>25</b><br>1:30pm Staff Meeting  | <b>26</b><br>9:00am Verso Chat<br>12:00pm Painting<br>6:00pm Painting G<br>6:30pm Zumba-Fo<br>6:30pm STARs Mee<br>7:00pm SAA-Recov<br>Support-Room 302 |

# ry 2025

| Wednesday  | Thursday   | Friday                                   | Saturday  |
|--|--|--|---|
| <b>Services</b><br><br>n of Sunday services,<br>news or<br><a href="#">mcenter</a> |  |  | <b>1</b><br><br>8:30am Men's Breakfast at HamFam<br>9:30am Zumba-Fox Hall   |
| <b>5</b><br><br>with Pastor Steve<br>Group<br>roup<br>k Hall<br>eryl               | <b>6</b><br><br>9:30am Visitation Committee<br>6:00pm Bell Choir<br>6:00pm Girl Scouts<br>7:00pm Choir | <b>7</b>                                 | <b>8</b><br><br>9:30am Zumba-Fox Hall<br>6:00pm Church Family Feud-Fox Hall |
| <b>12</b><br><br>with Pastor Steve<br>Group<br>roup<br>k Hall<br>eryl              | <b>13</b><br><br>6:00pm Girl Scouts<br>7:00pm Choir  | <b>14</b>                                | <b>15</b><br><br>9:30am Zumba-Fox Hall                                      |
| <b>19</b><br><br>with Pastor Steve<br>Group<br>roup<br>k Hall<br>eryl              | <b>20</b><br><br>6:00pm Bell Choir<br>6:00pm Girl Scouts<br>7:00pm Choir                               | <b>21</b>                                | <b>22</b><br><br>9:30am Zumba-Fox Hall                                      |
| <b>26</b><br><br>with Pastor Steve<br>Group<br>roup<br>k Hall<br>eting<br>eryl     | <b>27</b><br><br>6:00pm Bell Choir<br>6:00pm Girl Scouts<br>6:00pm Property Committee<br>7:00pm Choir  | <b>28</b><br><br>6:00pm Mardi Gras Bingo |   |



## **St. Johns Kitchen Corner**

Hello, my friends, and Happy New Year from the church kitchen! We are almost done with our tour of St. John's kitchen. The steel island near the sinks holds an abundance of large pots and baking pans on the stove side. Inside the doors on the other side of the island you will find some mixing bowls, and

held mixer, cookie cooling racks, smaller cooking pots and some chopping gadgets.

Did you know that the L shaped steel counter island has a secret drawer directly in front of the refrigerator?

This is where you will find multiple cutting boards. Please save our counter tops and use the cutting boards to cut anything. I use the shelves under the counter to store different items depending on what the current events might be. I will be working on that area in the coming months. I hope to work on many areas of the kitchen in the coming months to cleanse it of items we do not need.

The red cabinet in the kitchen is currently storing some of the Lady PEEPS supplies and a few inherited items which are not currently used. On top of the cabinet is a container which holds a few emergency cleanup items. Yes, folks, it's SHAMWOW towels which will clean up big spills in a flash. Please feel free to use them for major spills. You will be amazed how well they work and you will save a bunch of trees by not using paper products for the job! It's a win-win!

On the side of this red cabinet is an emergency fire blanket which can be used to cover a small kitchen fire. The fire extinguisher is also there to the right of the entrance door. Hopefully we will never need to use either of these items!

I will end our kitchen tour for today. Remember to keep St. John's kitchen a HAPPY KITCHEN in 2025!

**Colleen - the kitchen manager**

## Tailgate Party & Church Family Feud Night

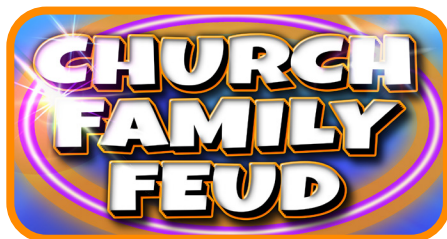
Saturday, February 8 - 6pm to 9pm in Fox Hall

The excitement is building! By the time this newsletter reaches you, we may know what teams are heading to Super Bowl LIX at the Caesars Superdome in New Orleans. Our "Fun-Raising" Committee is getting ready for the big event, and you're invited!!

Come for a meal that includes chili, cornbread, dessert, and beverage. Afterwards, we'll assemble teams to play Church Family Feud, based on the popular TV game show where families or teams compete with each other trying to supply the most popular answers to survey questions.

Regardless of what teams are in the Super Bowl, be sure to wear clothing of your favorite football team. We are also asking everyone to bring a can of soup to support the "Souper Bowl of Caring" hunger drive, with donations going to the Whitehall Food Pantry.

There is a sign-up sheet in the lounge area or contact the church office. Let us know the number attending and if you would like to donate any food items for the meal.



| 100                                |    |            |   |
|------------------------------------|----|------------|---|
| Name An Animal That starts with R. |    |            |   |
| Rabbit                             | 35 | RoadRunner | 5 |
| Rhino                              | 26 | Reindeer   | 4 |
| Raccoon                            | 18 | Rooster    | 2 |
| Rat                                | 9  | Robin      | 1 |

## **“Keeping You in Stitches” News**

We want to thank Emilie Moyer for serving as one of our St. John’s crafters and for all her wonderful ideas and sewing creations she made over the years. It is with sadness that Emilie is “retiring” from serving on this committee; she will be sorely missed.



Come to our Easter and Spring Craft Sale on Sundays, March 16 and March 23. Look for us in the lounge area before and after worship to make your purchases.

We need people to help with our sewing, knitting, and crocheting projects. We supply the materials needed; you work out of your home. There are no meetings scheduled.

During these cold, winter months, keep in mind we have 12-Bean Soup Mix available for sale at \$5.00. It’s a real comfort food to enjoy at this time of year.

The Women’s Group Church Cookbook is on sale for only \$5.00. It contains 350 delicious recipes for appetizers, soups, entrees, salads, sides dishes, and desserts.

Thank you to everyone who purchased craft items in 2024 and, of course, a big thank you to our team of Crafters. With a profit of \$1,079.60 at the end of the year, the Mission Committee designated the profit to be given to St. John’s Property Fund.

Please contact Carol Raszler at (610) 393-7572 or email her [crazzler@aol.com](mailto:crazzler@aol.com) if you are interested in any of these items.





# Lady PEEPS

The Lady PEEPS Women's Group will meet in Fox Hall on **February 18 at 6:30pm.**

Our speaker will be Vicki Poole who is the founder of Connection Ubuntu, a computer skills training program in Africa. Come and learn how one woman's idea can turn into a significant program that is changing the lives of people so far away! Refreshments will be served and please use the elevator entrance.

**PEEPS STANDS FOR POSITIVE - EXTRAORDINARY -  
ENCOURAGING - PRAYERFUL - SISTERS!**

## Men's Breakfast Group



The Men's Breakfast Group of St. John's meets on the first Saturday of the month at the Hamilton Family Restaurant located at 2027 Hamilton St. in Allentown. Our next meeting is on **February 1 at 8:30am.** We would be pleased to have you join us. If you would like to know more about this group, please contact Bob Bold at (610) 393-6123 or email [QVRRBold@aol.com](mailto:QVRRBold@aol.com)

## Now Hiring

We are seeking a part-time custodial / maintenance team member. The role requires approximately 7 hours per week.

Please email us [custodians@sjuccf.org](mailto:custodians@sjuccf.org) to apply or for more information. Call the church office (610) 264-8421.

## Upcoming “Fun-Raising” Events at St. John’s

**Saturday, February 8** — Super Bowl Tailgate Party & Church Family Feud Night — 6pm to 9pm in Fox Hall. Wear clothing of your favorite football team. The menu includes chili, cornbread, dessert, and beverages, followed by teams playing Family Feud. Bring a can of soup for “Souper Bowl of Caring” to support the Whitehall Food Pantry. Sign-up sheet in the lounge area or call the church office.

**Sunday, February 23** — Pastie Sale Order Deadline — Order forms are available on the church’s website or on the table in the lounge area. See Carol.

**Friday, February 28** — Mardi Gras Gift Card Bingo — Doors open at 6pm, followed by the games at 7pm. Food will be available for purchase. Tickets are \$20 in advance or \$25 at the door. There will also be a 50/50 raffle and a Tricky Tray. Tickets are available through the office or see Tom.

**Monday, March 10** — Dine & Donate at Texas Roadhouse — Located at 6268 Hamilton Boulevard, Trexlertown, from 3pm to 10pm. Ten percent of proceeds will be given back to St. John’s. A flyer is needed and available on the church’s website or on the table in the lounge. See Mike.

**Sunday, March 16** — Phantoms Hockey — The game starts at 3:05pm at PPL Center with Phantoms playing against the Wilkes-Barre/Scranton Penguins. Tickets cost \$27 per person. See Brian F.

**Sundays, March 16 and March 23** — Easter & Spring Craft Sale — Items will be sold in the lounge area each Sunday before and after worship. See Carol.

**Thursday, March 27 and Sunday, March 30** — Pastie Sale Pickup — Thursday from 6pm to 8pm and Sunday after worship in Fox Hall. See Carol.

**SaveAround Lehigh Valley Coupon Books 2025** — Discounts to restaurants (dining and fast-food), dept. stores, sporting goods, recreational activities, reliable services, hotels, car rentals, etc. Cost \$25. Good all year. See Carol.

**Giant & Weis Gift Cards** — Church gets 5% back. See Tom or Carol.

**Redner’s Register Tapes** — Church gets 1% back. See Karen.

### COMMITTEE CONTACTS:

Mike Borgman (610) 762-8959 (Chairperson)

|                    |                |                 |                |
|--------------------|----------------|-----------------|----------------|
| Ginny Brokenshire  | (610) 439-0443 | Tom Moyer       | (610) 432-3372 |
| Bill Castello      | (651) 492-1399 | Carol Raszler   | (610) 393-7572 |
| Pastor Steve Davis | (610) 264-8421 | Karen Stoitsits | (610) 262-0746 |
| Amy Feidler        | (835) 210-5944 | Brian Strauss   | (610) 248-9119 |
| Brian Fisher       | (610) 762-1134 |                 |                |

## Grocery Shopping is as Easy as A, B, C

Whether you drive to the grocery store to shop, order online, or have your groceries delivered, we all need groceries. Do you realize that by purchasing Giant and Weis gift cards and by saving Redner's register tapes you are contributing money to St. John's?

For every Giant and Weis card sold, the church receives 5% back. You also get discounts for gas at both stores. Gift cards can be purchased through the church office or by seeing Tom Moyer or Carol Raszler every Sunday morning before or after worship.

For every Redner's tape collected, the church receives 1% back from its "Save-A-Tape Program." The Redner's tapes can be mailed to the church office or placed in a collection jar found on the table in the lounge area. In December, we turned in \$5,025.35 worth of sales receipts for which we will receive a check back in the amount of \$50.25. Thank you to Karen Stoitsits for tallying all the receipts.

It's an easy way to give financially to the church. Think of St. John's every time you go grocery shopping or need to fill up your car.

## Dine & Donate at Texas Roadhouse

The "Fun-Raising" Committee has scheduled another Dine & Donate event at the Texas Roadhouse located at 6268 Hamilton Blvd. in Trexlertown on Monday, March 10, between the hours of 3pm to 10pm. Menu includes a large selection of appetizers, dinners, salads, burgers, sandwiches, desserts, and beverages. Dine-in or to-go. Restaurant will donate 10% of your total food purchases back to St. John's. A flyer is needed—[available on church's website](#), and on table in the lounge area. If you have any questions, contact Mike Borgman at (610) 762-8959 or email [blackbear402@rcn.com](mailto:blackbear402@rcn.com)

## **“SaveAround Lehigh Valley” Books**

### **Gives You Savings for a Whole Year**

These 2025 coupon books contain hundreds of buy one get one free; 50% off; plus many more discount offers; and includes a 12-month Savings App with over 400,000 of additional local and national offers...save on the go. It features the most popular merchants locally and in our area.



Whether you are shopping for restaurants (dining and fast food), food, clothing, sporting goods, recreational activities, reliable services, hotels, or car rentals, the SaveAround coupons make life more affordable and helps St. John's raise funds for the church.

A sample copy for you to view can be found on the table in the lounge area. The cost of the coupon book is \$25. Please make checks payable to St. John's. Books can be purchased through the church office or see Carol Raszler any Sunday before or after worship.

Dear St. John's Congregation:

Thank you for your charitable contribution of \$1,070.00 in December 2024 in support of the Valley Youth House Holiday Gift Drive Program. Your generosity makes a significant difference in our ability to provide programming to young people in desperate need of our services.

Valley Youth House supports young people who are experiencing homelessness, housing insecurity, and loss of family connections to achieve health and independent futures. Personalized programs and services offer emergency shelter, stable housing, counseling, and life skills training.

For the last 50 years, VYH has provided crisis intervention and outcome-driven programs to more than 446,000 youth and families in our community. This is only possible with the assistance of philanthropic support; and therefore, we are most appreciative of your donation.

Sincerely,  
Christina J. Schoemaker  
Senior VP of Advancement

## Giving Made Easy!

St. John's ministry participants now have the ability to use debit/ credit card payments for all our many activities and opportunities! You've asked us to make giving even easier. Now we have secure, encrypted transaction systems, onsite at St. John's or by using our website.

Want to buy some Giant or Weis Gift Cards for your groceries? Want to purchase your IronPigs game tickets? Want to go on one of our bus trips? Ready to purchase candies? pasties? nuts? or flowers? Bingo tickets? You're in luck! It's easy! Be sure to visit with Alison, Michelle, Tom, Carol or Pastor Steve and we will help you get started. All we need is you and your card!



***Scan, Support & Sustain***  
**BECOME AN AUTOMATIC CONTRIBUTOR!**

## February Birthdays

If you have an upcoming birthday or notice an omission, please update the church office.

|            |                            |            |                     |
|------------|----------------------------|------------|---------------------|
| 2/1 .....  | Gavin Phillips             | 2/14 ..... | Aaron Mill          |
| 2/2 .....  | Aubrey Beckwith            | 2/15 ..... | Richard Baatz Sr    |
| 2/4 .....  | Robert Beckwith            |            | Conner Strauss      |
|            | Dewey Yeatts               | 2/16 ..... | Gracie Funches      |
| 2/5 .....  | Michelle Brobst            |            | Gerald Yanavok      |
|            | Christopher Rowe           | 2/17 ..... | Janice Blaker       |
| 2/6 .....  | Andrew Doyle               |            | Rev George Eckstein |
|            | Susan Imboden              | 2/18 ..... | Marion DeMilio      |
| 2/7 .....  | Halie Holderman            | 2/19 ..... | Sandy Koch          |
|            | Peter Mohr                 | 2/20 ..... | Joseph Catalini     |
| 2/8 .....  | Brian Fisher               |            | Ashley Kuhns        |
| 2/10 ..... | Owen Eberhart Jr           | 2/21 ..... | Kelly Weiner        |
|            | Todd Heffelfinger          | 2/22 ..... | Michelle Cortright  |
|            | Bruce Pope                 | 2/23 ..... | Emilie Dumbach      |
|            | Timothy Sommer             | 2/24 ..... | Mary Jane Ott       |
|            | Brian Strauss              |            | Elizabeth Reck      |
|            | Janet Williams             |            | Lyla Schmoyer       |
| 2/11 ..... | Janet Ebert                | 2/25 ..... | Thomas Chryst       |
|            | George Williams            | 2/26 ..... | Wayne Lichtenwalner |
| 2/12 ..... | William Dovico             | 2/28 ..... | Anthony DeMilio     |
| 2/13 ....  | Paul E "Gus" Geissinger Jr |            | Heather Santee      |
|            | Eleanor O'Donnell          |            |                     |
|            | Kaylee Pagan               |            |                     |





## February Wedding Anniversaries

If you have an upcoming anniversary or notice an omission, please update the church office.

2/10/73

Edward & Cynthia Sommers

2/21/81

Barrie & Judith Carr



## Now Hiring

We are seeking a part-time teaching assistant to join our CELC (Christian Early Learning Center) team. Please email us [staff@stjohnslearningcenter.com](mailto:staff@stjohnslearningcenter.com) to apply or for more information.

Also, we are now accepting registration for the 2025-2026 school year. Please email us to set up a tour today!





## **Mission Moment**

### **California Wildfires - How Can You Help?**

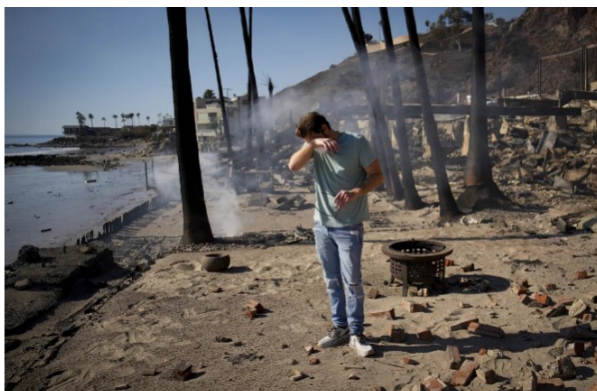
The fires in Los Angeles County are unprecedented in size, speed, and destruction. As this newsletter goes to press, over 12,000 structures have burned, entire neighborhoods have been wiped out, and 27 lives have been lost, with 31 individuals still reported missing. Fires don't discriminate. Both rich and poor have lost their homes, possessions, and jobs as well as a sense of security and stability. The trauma from such an event is very real and long-lasting.

The Global HOPE team at UCC National is helping to connect with the Southern California Nevada Conference staff, churches, and others affected by the wildfires with immediate resources while also preparing to support long-term recovery efforts.

It is easy for all of us to feel powerless in the face of such immense devastation, but there is a way we can meaningfully and appropriately respond now, by giving generously to support recovery needs and by keeping all who have been affected in our prayers. The Mission Committee invites you to support UCC National's recovery efforts by donating to the UCC's California Wildfires 2025 Appeal. Enclosed with this newsletter is a General Disaster Relief Fund envelope, which can also be found on the table at the rear of the sanctuary. Donations can be mailed into the church office, put in the offering plate, made online, or by text. Please make checks payable to St. John's UCC, Fullerton with California Wildfires in the memo section.



Rev. John Shaver (R) looks on while visiting the remains of Community United Methodist Church, where he is pastor.



Luke Dexter reacts as he sifts through the remains of his father's fire-ravaged beachfront property.



Friday, Jan. 10: This aerial photo shows homes and businesses reduced to smoldering rubble by the Palisades Fire.

## **“Souper Bowl of Caring”**

Each year thousands of individuals and groups from all 50 states participate in the “Souper Bowl of Caring.” In the last 35 years, over 300,000 groups have participated and have generated more than \$198 million in monetary and food donations for food banks and community-based charities.

It’s an annual event where communities come together, inspired by football’s Super Bowl, to tackle hunger locally. As millions of people tune in to watch football’s Super



Bowl, we’re also tuning in to the needs of our neighbors. The Souper Bowl of Caring is about taking action to fight hunger at the local level, ensuring that no one has to go without the food they need.

For all of January and up to February 9, we are collecting all kinds of canned soups for “Souper Bowl of Caring.” Our goal is to collect 250 cans of soup. We particularly request everyone to bring a can of soup on Super Bowl Sunday, February 9. Our Confirmation Class will be on hand with soup pots after worship if you would like to give a monetary donation.

Whether you’re a sports fan or not, it’s a chance to be part of something bigger. Let’s make this year’s “Souper Bowl of Caring” the most successful one yet! All donations will go to the Whitehall Food Pantry.

Let’s come together as a team to tackle hunger and show the power of kindness. Every can and every dollar counts in the fight against food insecurity, so let’s make a real difference in the lives of those who need it most. Together, we can ensure this year’s “Souper Bowl of Caring” is the most successful yet!

## Whitehall Food Pantry

The Whitehall Food Pantry is located at St. Stephen's Episcopal Church located at 3900 Mechanicsville Rd. in Whitehall. St. John's needs volunteers that can help on the 4th Monday of every month. Some volunteers meet from 9am to 11am to stock shelves and sort out donations from grocery stores, Second Harvest, etc. Another group of volunteers come from 5:30pm to 7:30pm to help the pantry's patrons select food and load items in their cars. If you would like to participate in this outreach or to learn more, please contact Gary Black at (484) 274-2405 or email him [gary.t.black@outlook.com](mailto:gary.t.black@outlook.com)

We continue to collect cans of soup in support of "Souper Bowl of Caring." Items can be placed on the shelves in the coat room area by the sanctuary. Monetary donations are also accepted.

## CWS Cleanup Bucket Kits

We've been collecting cleaning products and buckets for Church World Service since hurricanes Helena and Milton struck the U.S. back in September and October of 2024. We thank everyone for your contributions both in supplies and in monetary donations. This outreach will conclude at the end of January. We'll inform you at a later date how the bucket kits and funds were distributed.

## Update on Other Mission Outreaches

December's special offering for the Christmas Fund amounted to \$550.00. It is an annual UCC offering for retired and active UCC pastors and lay church workers and their families facing financial need. A check was sent to UCC National.

At the end of 2024, the profit received from our Crafters' sales amounted to \$1,790.60. The funds were given back to St. John's for the Property Fund.

At the end of 2024, the 10% tithing from all our fundraisers amounted to \$2,576.70. Those funds were divided in half with \$1,288.35 each going to the Lehigh Conference of Churches and to Turning Point of Lehigh Valley.



## Whitehall-Coplay Hunger Initiative

WCHI and the Faith-Based Community are providing free meals to low-income Whitehall-Coplay households on the 1st Sunday and 3rd Tuesday of each month from 4pm to 6pm. WCHI will post a meal reminder on Facebook and Instagram and state if it is an inside sit-down meal, take out, or a version of both. The meal being served will also be posted. For more information or to volunteer, please contact Karen Haberern, Program Chair, at (610) 730-3184.

The host churches are as follows:

| Date         | Church                                   | Address                       | Phone          |
|--------------|--|-------------------------------|----------------|
| Sunday 2/1   | Muslim Assoc. of the Lehigh Valley       | 1988 Schadt Ave., Whitehall   | (703) 346-8698 |
| Tuesday 2/18 | Whitehall Bible Fellowship Church        | 3300 Seventh St., Whitehall   | (610) 434-8661 |
| Sunday 3/2   | St. John the Baptist (social hall)       | 3024 S. Ruch St., Whitehall   | (610) 262-2260 |
| Sunday 3/18  | St. Elizabeth of Hungary Catholic Church | 618 Fullerton Ave., Whitehall | (610) 266-0695 |

## How Did Our St. John's Family Do?

| Mission                    | Dec 2024    | YTD 2024    | YTD 2023    | YTD 2022    |
|----------------------------|-------------|-------------|-------------|-------------|
| Our Church's Wider Mission | \$ 1,249.00 | \$13,176.00 | \$12,823.00 | \$14,815.90 |
| The Christmas Fund         | \$ 415.00   | \$ 550.00   | \$ 347.00   | \$ 585.00   |
| Whitehall Food Pantry      | \$ 475.00   | \$ 3,375.00 | \$ 4,180.00 | \$ 1,700.00 |
| Mitten Tree (VYH)          | \$ 20.00    | \$ 1,070.00 | \$ 950.00   | \$ 680.00   |
| Mitten Tree (Phoebe)       | \$ 25.00    | \$ 865.00   | \$ 765.00   | \$ 620.00   |
| Hurricane Disaster Relief  | \$ 790.00   | \$ 1,799.00 | \$ 585.00   | N/A         |
| TOTALS                     | \$2,974.00  | \$22,430.00 | \$24,997.00 | \$25,010.70 |

**Mission Outreach giving for December totaled \$2,974.00 and 2024 YTD giving totaled \$22,430.00.**



## Annual Meeting - February 2

The Annual Meeting of St. John's UCC, Fullerton, will follow worship with a potluck in Fox Hall. Join us as we celebrate our ministry in 2024 with gratitude and look forward in faith to God's call to worship, love and serve in 2025. "Together We Are Stronger" is our theme, guiding us to build upon the foundation of the relationships we've grown with God and each other.

Copies of the Annual Report are available in limited number. You may review and download a copy using the following link or go to our website to download a copy for your viewing at home. We will share ministry reports as well as proposed revisions to our Constitution and Bylaws for vote by our congregation. Please contact the church office if you need help accessing the Annual Report.

We look forward to seeing you for worship, the potluck meal gathering and our annual meeting on Sunday, February 2!

A vibrant poster for a Mardi Gras Bingo event. The background is a dark, starry space with green and purple nebulae. The text is in a playful, colorful font. The main title 'MARDI GRAS BINGO!' is in large, bold, multi-colored letters. To the right, the date and location are listed: 'Friday February 28 Fox Hall'. Below that, the event details are given: 'Doors open 6pm Games begin 7pm'. The ticket prices are listed: 'Advance tickets: \$20 At the door: \$25'. A line of text describes the event: 'Join us for a fun-filled night of excitement and surprises. Costumes are encouraged!'. A list of activities follows: '• Tricky Tray • 50/50 Drawings • Food Available •'. At the bottom, the prizes are listed: '17 "regular" games + 3 "specials" \$50 and \$100 Giftcard Prizes'.

**St Johns UCC Fullerton - Statement of Finances**  
**Dec 2024**

| Income                           | Electronic        | 12/1/2024         | 12/8/2024         | 12/15/2024        | 12/22/2024        | 12/29/2024        | Total              |
|----------------------------------|-------------------|-------------------|-------------------|-------------------|-------------------|-------------------|--------------------|
| Offerings for Operating Expenses | \$6,234.92        | \$4,123.00        | \$3,210.00        | \$3,028.00        | \$2,241.00        | \$6,710.00        | \$25,546.92        |
| Rental Income--Gross             | \$1,325.50        |                   |                   |                   |                   |                   | \$1,325.50         |
| Fundraising Income--Net of Exp   | \$537.51          | \$10.00           | \$125.00          |                   | \$409.12          | \$41.25           | \$1,122.88         |
| Endowment Interest               |                   |                   |                   |                   |                   |                   | \$-                |
| Flowers                          |                   | \$162.00          | \$155.00          |                   |                   |                   | \$317.00           |
| Christian Education              | \$20.00           | \$30.00           | \$5.00            | \$75.00           | \$20.00           | \$15.00           | \$165.00           |
| Special Gifts                    | \$206.81          |                   |                   |                   |                   |                   | \$206.81           |
| <b>Total</b>                     | <b>\$8,324.74</b> | <b>\$4,325.00</b> | <b>\$3,495.00</b> | <b>\$3,103.00</b> | <b>\$2,670.12</b> | <b>\$6,766.25</b> | <b>\$28,684.11</b> |

| Expense Summary          |  | Actual             | Budget             | Difference        |
|--------------------------|--|--------------------|--------------------|-------------------|
| Pastoral Services        |  | \$10,219.91        | \$10,793.00        | \$(573.09)        |
| Staff Salaries & Expense |  | \$8,715.26         | \$8,877.00         | \$(161.74)        |
| Property                 |  | \$3,431.00         | \$3,011.00         | \$420.00          |
| Parish Programs          |  | \$4,492.23         | \$4,579.50         | \$(87.27)         |
| <b>Total</b>             |  | <b>\$26,858.40</b> | <b>\$27,260.50</b> | <b>\$(402.10)</b> |

|                   | Month             | Year                |
|-------------------|-------------------|---------------------|
| Total Income      | \$28,684.11       | \$293,175.18        |
| Total Expenses    | \$26,858.40       | \$296,800.01        |
| <b>Net INCOME</b> | <b>\$1,825.71</b> | <b>\$(3,624.83)</b> |

**Mission Giving, Dec 2024**

|                             |                   |
|-----------------------------|-------------------|
| Our Churches Wider Mission  | \$1,249.00        |
| Christmas Fund              | \$415.00          |
| UCC General Disaster Relief | \$790.00          |
| Whitehall Food Pantry       | \$475.00          |
| <b>Total</b>                | <b>\$2,929.00</b> |

**St John's UCC Fullerton**  
**Fund Balances**  
**For Month Ending, Dec 2024**

| Account                         | Nov-24               | Dec-24               | Difference           |
|---------------------------------|----------------------|----------------------|----------------------|
| Checking Account--KNBT          | \$37,565.10          | \$38,349.52          | \$784.42             |
| Giant Card Funds                | \$2,898.64           | \$2,032.76           | \$(865.88)           |
| Weis Card Funds                 | \$551.50             | \$962.25             | \$410.75             |
| sub-total General Fund Assets   | \$41,015.24          | \$41,344.53          | \$329.29             |
| IN & OUT Account--KNBT Checking | \$49,914.59          | \$40,869.84          | \$(9,044.75)         |
| Restricted/Property Investments | \$78,961.00          | \$79,245.00          | \$284.00             |
| sub-total Restricted Assets     | \$128,875.59         | \$120,114.84         | \$(8,760.75)         |
| Endowment Fund--Quadrant        | \$517,423.00         | \$508,925.00         | \$(8,498.00)         |
| <b>TOTAL ASSETS</b>             | <b>\$687,313.83</b>  | <b>\$670,384.37</b>  | <b>\$(16,929.46)</b> |
| Cornerstone Pavilion Loan       | \$(82,555.97)        | \$(82,428.86)        | \$127.11             |
| <b>TOTAL LIABILITIES</b>        | <b>\$(82,555.97)</b> | <b>\$(82,428.86)</b> | <b>\$127.11</b>      |
| <b>NET FUND BALANCE</b>         | <b>\$604,757.86</b>  | <b>\$587,955.51</b>  | <b>\$(16,802.35)</b> |





## Staff Contacts

**Rev. Steve Davis**

Senior Pastor

[srpastor@sjuccf.org](mailto:srpastor@sjuccf.org)

**Patrick Sandt**

Director of Music Ministry / Organist

[music@sjuccf.org](mailto:music@sjuccf.org)

**Alison Berger Boor**

Office Administrator

[officesecretary@sjuccf.org](mailto:officesecretary@sjuccf.org)

**Sue Weldner**

Treasurer

[sbweldner@gmail.com](mailto:sbweldner@gmail.com)

**Michelle Gutekunst**

Financial Secretary

[financialsecretary@sjuccf.org](mailto:financialsecretary@sjuccf.org)

Coordinating Custodian

[custodians@sjuccf.org](mailto:custodians@sjuccf.org)

**Bill Castello**

Worship Tech

[stars@sjuccf.org](mailto:stars@sjuccf.org)

Connections Newsletter Editor

[newsletter@sjuccf.org](mailto:newsletter@sjuccf.org)

**Christina Bach**

Custodian

[iron1on1@verizon.net](mailto:iron1on1@verizon.net)

**Sean Hartman**

Custodian

[sean.hartman1132@gmail.com](mailto:sean.hartman1132@gmail.com)

[www.stjohnsuccfullerton.org](http://www.stjohnsuccfullerton.org)

575 Grape Street, Whitehall, PA 18052 (610) 264-8421

## Church Chuckle



During the children's message, the Pastor asked, "Who knows about St. Valentine?"

"Oh! The candy guy!" piped up James, bouncing on his knees. "He brings those little hearts that taste like chalk!"

The pastor chuckled. "Well, St. Valentine was actually known for showing love to everyone. And speaking of love," he looked around the circle, "who should we love most of all?"

Little Heather thought carefully, counting on her fingers. "Jesus is first... but then there's Granny's cookies, and my hamster Mr. Whiskers, and..." she hesitated, "maybe broccoli, but only when it's covered in cheese."

A warm ripple of laughter spread through the sanctuary as the Pastor nodded sagely. "You know, Heather, I think Jesus probably understands about the broccoli."

