

Benjamin Verge

The Glass Menagerie

11/13/2020

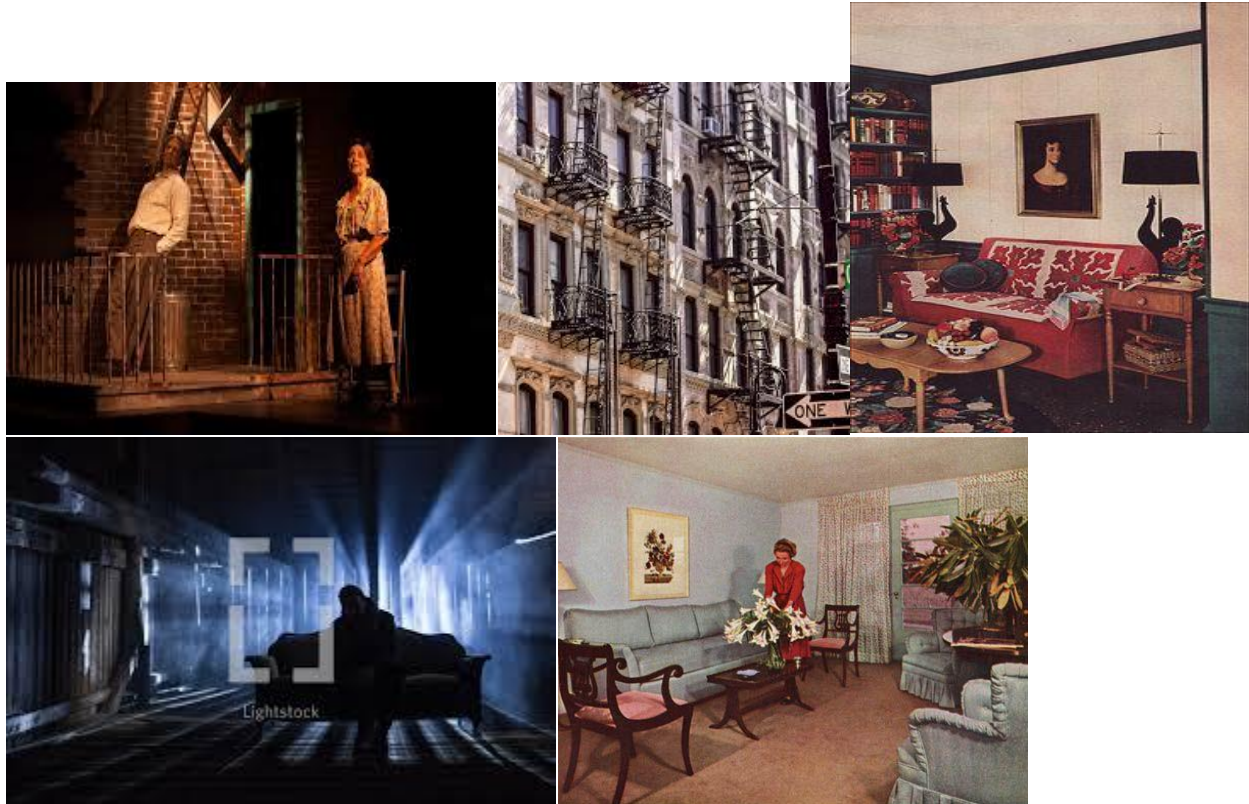
Emotional Research



1. Tom was into poetry and wants to write it professionally but is stuck at home paying bills at his mother's house because the father abandoned the family.
2. I'm using music to show how Tom is creative and moves to the beat of his own tune.

3. A romantic situation between Jim and Laura
4. Represents Laura who feels like she is unfortunately one of a kind, feels alone, feels hopeless, yet not realizing how beautiful she really is.
5. Represents the nickname Jim gave to Laura to show that her defect and unusualness is really the beautiful thing about her.

Texture/Material Research



1. The fire Escape they were talking on
2. A wider view of the fire escape
3. 1940s typical living room area where the family gather
4. Similar what I will use for Tom's alone time and narration
5. 1940s living room