



GBT Sales & Services, LLC

GLOVES & BELTS



IRON

FENCER

**THE
-HOSS-**

GOLD FIT
USA MADE
FITS LIKE A GLOVE SHOULD

FORM-FITTING GLOVES

CHECK OUT OUR **USA-MADE** GLOVES.

GOLDEN STAG GLOVES WOULD LIKE TO THANK YOU FOR YOUR LOYAL SUPPORT THROUGH OUR 30+ YEARS OF BUSINESS.

OUR GOAL IS TO PROVIDE YOU WITH THE BEST SERVICE POSSIBLE. WE WILL ACHIEVE THIS BY DELIVERING YOUR GOODS PROMPTLY AND KEEPING YOU STOCKED WITH THE BEST-SELLING GLOVES AT THE BEST PRICES.

AT GOLDEN STAG WE FIRMLY STAND BEHIND THE QUALITY OF OUR PRODUCTS.



GOLDEN SERVICE

- INDUSTRY-LEADING SHIP TIMES.
- FLEXIBLE FREIGHT TERMS.
- CUSTOMIZATION CAPABILITIES.
- PRIVATE LABEL CAPABILITIES.



GOLDEN QUALITY

- FAMILY-RUN BUSINESS BUILT FROM THE GROUND UP, WHERE QUALITY IS OUR FIRST PRIORITY.
- WE ONLY SELECT AND SELL HIGH QUALITY MATERIAL FOR ALL OF OUR PRODUCTS.
- OFFER A PREMIUM QUALITY USA-MADE ASSORTMENT.



GOLDEN VALUE

- PROVIDE OUR INDUSTRY-FAMOUS QUALITY PRODUCT AT MORE THAN COMPETITIVE PRICING.
- OFFER A ROBUST PRODUCT ASSORTMENT, MAKING GOLDEN STAG YOUR "ONE-STOP-SHOP".
- WE STRIVE TO BE THE BEST VENDOR AND PARTNER IN THE GLOVE INDUSTRY.

GLOVES 1

USA-MADE	1-2
IMPACT GLOVES	3
UNLINED DEERSKIN	4
ELKSKIN, BUFFALO, DEERSKIN	5
COWHIDE	6-7
LEATHER PALMS, WELDERS	8
GOATSKIN, PIGSKIN	9
ALL-PURPOSE	10-11
LINED ALL-PURPOSE	13
WINTER LINED	14-17
KNIT JERSEY	19
CANVAS CHORE	20
COATED	21-22
DIPPED	23-24
LATEX DIPPED	25
DISPOSABLE	26
LADIES' GARDEN	27-28
LADIES' LEATHER	29-30
KID'S GLOVES	31-32
RACKS & DISPLAYS, CUSTOMIZATION	33

BELTS 34

MEN'S BELTS	35-39
WOMEN'S BELTS	40
KID'S BELTS	41

WALLETS 43-44

USA-MADE



USA250

- PREMIUM COWHIDE
- "GOLD" FIT
- SEAMLESS PALM & WING THUMB
- SOFT & SUPPLE LEATHER

SIZES M-XXL

WINTER LINED



USA208F

- WINTER LINED PREMIUM GRAIN DOUBLE PALMED
- EXTRA PROTECTION ON PALM, INDEX FINGER, AND THUMB
- SOFT CHOCOLATE COWHIDE LEATHER

SIZES S-XXL



USA208

- PREMIUM GRAIN DOUBLE PALMED
- EXTRA PROTECTION ON THE PALM, INDEX FINGER, AND THUMB
- SOFT CHOCOLATE COWHIDE LEATHER

SIZES S-XXL

USA-MADE



USA735

- GOLD GOATSKIN RIDING GLOVE
- WEAR PATCH AROUND THUMB
- SOFT LEATHER GIVES GREAT FEEL

SIZES S-XXL



USA822

- GRAIN GOATSKIN PALM
- PINK BREATHABLE MESH BACK
- KEYSTONE THUMB
- SHIRRED ELASTIC BACK

SIZES S-L



USA214

- GRAIN GOATSKIN PALM
- SHIRRED ELASTIC BACK
- KEYSTONE THUMB
- BREATHABLE MESH BACK

SIZES S-XXL



USA212

- GRAIN COWHIDE PALM
- SHIRRED ELASTIC BACK
- KEYSTONE THUMB
- BREATHABLE MESH BACK

SIZES S-XXL

IMPACT & CUT RESISTANT

CUT RESISTANT



99

- CUT RESISTANT
- TPR DIPPED FOAM NITRILE
- CE RATED CUT RESISTANT SHELL
- TPR PROTECTION ON FINGERS AND BACK

SIZES M-XXL



255

- PREMIUM COWHIDE LEATHER
- TPR PROTECTION ON KNUCKLES AND FINGERS
- PADDED PALM FOR EXTRA COMFORT
- KEYSTONE THUMB & ROLLED CUFF

SIZES M-XXL

22



- MICROFIBER PALM WITH ANTI-VIBRATION FOAM PADDING
- TPR PROTECTION ON FINGERS
- NEOPRENE KNUCKLE & SLIP ON CUFF

SIZES M-XXL



41

- OIL-PROOF COTTON/POLY CANVAS
- DOUBLE PALMED
- FIRM EVA FOAM PADDED BACK
- TPR PROTECTION ON FINGERS
- REFLECTIVE STRIP & VELCRO WRIST

SIZES L-XXXL

CUT RESISTANT



770

- DURABLE GOATSKIN LEATHER
- KEVLAR LINED & STITCHED
- ANSI A5 CUT RATING
- KEYSTONE THUMB

SIZES S-XXL

COLD RESISTANT



44T

- THINSULATE LINED.
- COTTON/POLY ORANGE CANVAS PALM
- TPR PROTECTION ON FINGERS AND BACK
- WEAR PROTECTION ON THUMB CROTCH
- NEOPRENE WRIST FOR SECURE FIT

SIZES L-XXL

CUT RESISTANT



778

- WATER & OIL RESISTANT
- DURABLE GOATSKIN TREATED LEATHER
- KEVLAR LINED & STITCHED
- ANSI A5 CUT RATING
- KEYSTONE THUMB

SIZES S-XXL

CUT RESISTANT



399

- SUPER THIN 21 GAUGE CUT KNIT
- TUNGSTEN WOVEN FIBERS
- A6 CUT RATING
- NITRILE FOAM COATED

SIZES S-XL

UNLINED DEERSKIN



402

- PREMIUM DEERSKIN
- SEAMLESS PALM
- SOFT & SUPPLE
- WING THUMB
- SHIRRED ELASTIC BACK

SIZES S-XXL



811

- DEERSKIN ECONOMY
- THINNER LEATHER FOR BETTER FEEL
- KEYSTONE THUMB
- SHIRRED ELASTIC BACK

SIZES XS-XXL



400

- PREMIUM DEERSKIN
- SEAMLESS PALM
- SOFT & SUPPLE
- KEYSTONE THUMB
- SHIRRED ELASTIC BACK

SIZES S-XXL



900

- DEERSKIN PATCH PALM FOR EXTRA WEAR
- KEYSTONE THUMB
- SHIRRED ELASTIC BACK

SIZES S-XXL



810

- PREMIUM DEERSKIN
- SOFT & SUPPLE
- KEYSTONE THUMB
- SHIRRED ELASTIC BACK

SIZES XS-XXL



806

- PREMIUM BLACK DEERSKIN
- SOFT & SUPPLE
- KEYSTONE THUMB
- SHIRRED ELASTIC BACK

SIZES XS-XXL



1537

- PREMIUM SUEDE DEERSKIN
- KEYSTONE THUMB
- SHIRRED ELASTIC BACK

SIZES XS-XL



809

- GRAIN DEERSKIN PALM
- SUEDE DEERSKIN BACK
- KEYSTONE THUMB FOR COMFORTABLE FIT

SIZES M-XXXL

AVAILABLE IN WOMEN'S

ELKSKIN | BUFFALO | DEERSKIN



808

- PREMIUM HEAVY ELKSKIN
- SEAMLESS PALM
- WING THUMB
- SHIRRED ELASTIC BACK

SIZES S-XXL



426

- BUFFALO GRAIN LEATHER
- SOFT AND DURABLE
- KEYSTONE THUMB
- SHIRRED ELASTIC BACK
- LONG LASTING & GREAT VALUE

SIZES S-XXL



805

- TOP-GRADE ELKSKIN
- KEYSTONE THUMB
- SHIRRED ELASTIC BACK

SIZES XS-XXL



67

- DURABLE BUFFALO LEATHER PALM
- COMFORTABLE SPANDEX BACK
- PULL ON WRIST TAB

SIZES S-XXL



807

- GRAIN ELKSKIN
- KEYSTONE THUMB
- SHIRRED ELASTIC BACK
- ECONOMY GRADE

SIZES S-XXL



2150

- DEERSKIN
- SEAMLESS PALM
- VELCRO WRIST STRAP
- NEOPRENE KNUCKLE
- STRETCH KNIT BACK

SIZES XS-XXL



2151

- DEERSKIN BLACK
- SEAMLESS PALM
- VELCRO WRIST STRAP
- NEOPRENE KNUCKLE
- STRETCH KNIT BACK

SIZES XS-XXL

COWHIDE

IRON FENCER



207

- DOUBLE-PALMED COWHIDE
- GOLD GRAIN COWHIDE
- INDEX FINGER/THUMB PATCH
- ROLLED CUFF

SIZES XS-XXXL



148

- BEIGE GRAIN COWHIDE
- KEYSTONE THUMB
- HEMMED CUFF
- BEST SELLER

SIZES XXS-XXXL



145

- BROWN SPLIT COWHIDE
- KEYSTONE THUMB
- COLOR-CODED HEMMED CUFF

SIZES S-XL



189

- TOP GRAIN COWHIDE
- PULL STRAP
- KEYSTONE THUMB
- HEMMED CUFF

SIZES S-XL



140

- COWHIDE
- GRAIN PALM/SPLIT BACK
- KEYSTONE THUMB
- HEMMED CUFF

SIZES XS-XL



187

- TOP GRAIN COWHIDE
- PULL STRAP
- KEYSTONE THUMB
- ROLLED CUFF

SIZES XS-XXL

PREMIUM FIT



730

- PREMIUM CURVED FINGER GLOVE
- TRUE SEAMLESS PALM WITH WING THUMB
- FOURCHETTE FINGERS FOR EXTRA COMFORT

SIZES S-XXL



205

- TOP GRAIN COWHIDE
- KEYSTONE THUMB
- ROLLED CUFF

SSIZES S-XL

WATER RESISTANT



226

- SUEDE COWHIDE LEATHER
- GRAIN GOATSKIN PALM PATCH
- WEAR PATCH PROTECTION
- WICKS AWAY MOISTURE
- DURABLE AND TOUGH-WEARING

SIZES S-XXL

COWHIDE



255

- PREMIUM COWHIDE LEATHER
- TPR PROTECTION ON KNUCKLES AND FINGERS
- PADDED PALM FOR EXTRA COMFORT
- KEYSTONE THUMB & ROLLED CUFF

SIZES M-XXL



217

- DOUBLE PALMED SUEDE COWHIDE
- DURABLE FENCING GLOVE
- ADDED PROTECTION IN KEY WEAR AREAS
- SHIRRED ELASTIC BACK

SIZES M-XXL



211

- PREMIUM COWHIDE
- GRAIN COWHIDE PALM
- BREATHABLE MESH BACK
- KEYSTONE THUMB

SIZES S-XXL

WATER RESISTANT



277

- WATER REPELLENT PREMIUM COWHIDE
- SOFT AND SUPPLE LEATHER
- WING THUMB FOR GREAT FIT

SIZES S-XXL



209

- GOLD GRAIN COWHIDE
- KEYSTONE THUMB
- ROLLED CUFF

SIZES S-XXL

KEVLAR SEWN



232

- WATER REPELLENT PREMIUM COWHIDE
- SUPER SOFT AND SUPPLE LEATHER
- WING THUMB FOR GREAT FIT
- KEVLAR THREAD

SIZES S-XXL

WATER RESISTANT



240

- GRAIN COWHIDE
- STRAIGHT THUMB
- KEVLAR THREAD
- WEAR PATCHES

SIZES S-XXL



257

- GOLD PREMIUM COWHIDE
- PALM PATCH FOR ADDED WEAR
- BRAIDED BRAND ON BACK OF HAND
- KEYSTONE THUMB

SIZES S-XXL

LEATHER PALMS | WELDERS



1300

- SPLIT COWHIDE
- "B" GRADE SELECT SHOULDER
- 2.5 INCH SAFETY CUFF
- FABRIC BACK
- RUBBERIZED CUFF

SIZES S-XXL



1200

- SPLIT COWHIDE
- "C" GRADE SHOULDER
- 2.5 INCH SAFETY CUFF
- FABRIC BACK
- RUBBERIZED CUFF

SIZE L



1411A

- SPLIT COWHIDE
- DOUBLE-PALMED
- "A" GRADE SELECT SHOULDER
- SECOND LAYER PROTECTION
- 2.5 INCH SAFETY CUFF
- FABRIC BACK

SIZES M-XL



1405

- WELDER ECONOMY
- COWHIDE SHOULDER LEATHER
- WING THUMB
- FULL SOCK LINED

SIZE L



1700

- COWHIDE HEAVY DUTY
- "A" GRADE SIDE SPLIT
- KEVLAR SEWN

SIZES S-XL



1439

- WELDER BLUE
- FOAM LINED
- FULL SOCK INSULATION
- REINFORCED PALM
- KEVLAR SEWN

SIZE L

GOATSKIN | PIGSKIN



707

- DOUBLE-PALMED GOATSKIN
- COMFORTABLE WORK GLOVE
- REINFORCEMENT IN ALL THE RIGHT PLACES

SIZES S-XXL



29

- SEAMLESS GOATSKIN
- HI-VIZ MESH BACK
- NEOPRENE KNUCKLE
- VELCRO WRIST STRAP
- TERRY THUMB FOR SWEAT ABSORPTION
- PADDED PALM

SIZES S-XXXL



725

- GOATSKIN
- LIGHTWEIGHT
- SOFT & SUPPLE
- KEYSTONE THUMB
- SHIRRED ELASTIC BACK

SIZES XS-XXL



7050

- MESH BACK
- HIGH VISIBILITY
- PIGSKIN PALM
- 3M REFLECTIVE BACK
- KEYSTONE THUMB

SIZES M-XL



166

- QUALITY GRAIN PIGSKIN
- KEYSTONE THUMB
- SOFT & SUPPLE
- SHIRRED ELASTIC BACK

SIZES S-XXL



7000

- DURABLE COTTON/POLY HI-VIZ CANVAS PALM
- TPR PROTECTION ON FINGERS AND BACK OF HAND
- ADDED WEAR PROTECTION IN THUMB CROTCH
- NEOPRENE WRIST FOR SECURE FIT

SIZES S-XL



716

- GRAIN GOATSKIN LEATHER
- SUEDE COWHIDE PALM PATCH
- WEAR PATCH PROTECTION
- WICKS AWAY MOISTURE
- DURABLE AND TOUGH-WEARING

SIZES S-XXL



795

- GOLD GOATSKIN
- PATCH PALM FOR EXTRA WEAR
- SHIRRED ELASTIC BACK
- WELTED THUMB CROTCH
- STRAIGHT THUMB

SIZES S-XL



747

- GOATSKIN PATCH PALM
- KEYSTONE THUMB
- PATCH PALM FOR EXTRA WEAR

SIZES S-XXL



797

- TAN/BROWN GOATSKIN LEATHER
- DOUBLE PALMED
- SOFT AND SUPPLE FEEL

SIZES S-XXL



727

- PREMIUM GRAIN GOATSKIN
- ROLLED LEATHER CUFF
- MEDIUM WEIGHT
- SOFT & SUPPLE

SIZES S-XXL



166C

- ECONOMY GRAIN PIGSKIN
- KEYSTONE THUMB
- SHIRRED ELASTIC BACK

SIZES S-XL

ALL-PURPOSE



20

- SYNTHETIC LEATHER
- OPEN CUFF FOR EASY ON/OFF
- PADDED PALM
- EXTRA-WEAR PATCH

SIZES S-XXL



20HV

- HI-VIZ YELLOW
- SYNTHETIC LEATHER
- OPEN CUFF FOR EASY ON/OFF
- PADDED PALM
- EXTRA-WEAR PATCH

SIZES S-XXL



21

- SYNTHETIC LEATHER
- OPEN CUFF FOR EASY ON/OFF
- PADDED PALM
- EXTRA-WEAR PATCH

SIZES S-XXL



20BG2PK

- 2 PACK
- SYNTHETIC LEATHER PALM
- SPANDEX BACK FOR TIGHT FIT
- OPEN CUFF FOR EASY ENTRY
- GREAT VALUE GLOVE

SIZES M-XL



16

- GOATSKIN
- REINFORCEMENT PATCHES ON PALM
- OPEN CUFF
- NEOPRENE KNUCKLE
- STRETCH KNIT BACK

SIZES S-XXL



16V

- GOATSKIN
- REINFORCEMENT PATCHES ON PALM
- VELCRO WRIST STRAP
- NEOPRENE KNUCKLE
- STRETCH KNIT BACK

SIZES S-XXL



36

- CAMOUFLAGE PRINT
- SYNTHETIC LEATHER PALM
- DIGITAL CAMO BACK
- SLIP ON WRIST

SIZES S-XXL



22

- MICROFIBER PALM WITH ANTI-VIBRATION FOAM PADDING
- TPR PROTECTION ON FINGERS
- NEOPRENE KNUCKLE & SLIP ON CUFF

SIZES M-XXL



30

- SUEDE COWHIDE PALM
- STRETCH BACK
- OPEN CUFF FOR EASY ENTRY

SIZES S-XXL



67

- DURABLE BUFFALO LEATHER PALM
- COMFORTABLE SPANDEX BACK
- PULL ON WRIST TAB

SIZES S-XXL

ALL-PURPOSE



2150

- DEERSKIN
- SEAMLESS PALM
- VELCRO WRIST STRAP
- NEOPRENE KNUCKLE
- STRETCH KNIT BACK

SIZES XS-XXL



51

- SILICON GRIP PALM
- RED MESH BACK
- NEOPRENE KNUCKLE
- VELCRO WRIST STRAP
- TERRY CLOTH THUMB FOR SWEAT ABSORPTION

SIZES S-XXL



2151

- DEERSKIN
- SEAMLESS PALM
- VELCRO WRIST STRAP
- NEOPRENE KNUCKLE
- STRETCH KNIT BACK

SIZES XS-XXL



29

- SEAMLESS GOATSKIN
- HI-VIZ MESH BACK
- NEOPRENE KNUCKLE
- VELCRO WRIST STRAP
- TERRY THUMB FOR SWEAT ABSORPTION
- PADDED PALM

SIZES S-XXXL



2152

- PIGSKIN
- SEAMLESS PALM
- VELCRO WRIST STRAP
- NEOPRENE KNUCKLE
- STRETCH KNIT BACK

SIZES S-XXL



15

- SYNTHETIC
- VELCRO WRIST STRAP
- STRETCH KNIT BACK

SIZES S-XXL



2153

- GOATSKIN
- SEAMLESS PALM
- VELCRO WRIST STRAP
- NEOPRENE KNUCKLE
- STRETCH KNIT BACK

SIZES S-XXL



14V

- PIGSKIN PALM
- REINFORCEMENT PATCHES ON PALM
- VELCRO WRIST STRAP
- NEOPRENE KNUCKLE
- STRETCH KNIT BACK

SIZES S-XXL



14

- PIGSKIN PALM
- REINFORCEMENT PATCHES ON PALM
- OPEN CUFF
- NEOPRENE KNUCKLE
- STRETCH KNIT BACK

SIZES S-XXL



LINED ALL-PURPOSE

WATERPROOF



850

- DEERSKIN
- WATERPROOF
- ADDED WEAR PATCHES
- VELCRO WRIST STRAP
- NEOPRENE KNUCKLE
- THINSULATE LINED

SIZES S-XXL



20FW

- WATERPROOF LINER
- FLEECE LINING
- SYNTHETIC LEATHER PALM
- ALL-PURPOSE WINTER GLOVE

SIZES S-XXL

WATERPROOF



816

- GOATSKIN
- WATERPROOF
- ADDED WEAR PATCHES
- LONG KNIT WRIST
- NEOPRENE KNUCKLE
- THINSULATE LINED

SIZES S-XXL



2150H

- BLACK DEERSKIN
- THINSULATE LINED
- ADDED WIND BARRIER
- VELCRO WRIST STRAP
- SEAMLESS PALM

SIZES XS-XXL

WATERPROOF



2125TW

- PIGSKIN
- ADDED WATERPROOF MEMBRANE
- VELCRO WRIST STRAP
- NEOPRENE KNUCKLE
- THINSULATE LINED

SIZES S-XXL



2152T

- PIGSKIN
- SEAMLESS PALM
- VELCRO WRIST STRAP
- NEOPRENE KNUCKLE
- THINSULATE LINED

SIZES S-XXL



2152THV

- PIGSKIN
- HIGH VISIBILITY
- ORANGE VELCRO WRIST STRAP
- NEOPRENE KNUCKLE
- THINSULATE LINED

SIZES S-XXL



2151H

- DEERSKIN
- THINSULATE LINED
- ADDED WIND BARRIER
- VELCRO WRIST STRAP
- SEAMLESS PALM

SIZES XS-XXL



2153T

- GOATSKIN
- SEAMLESS PALM
- VELCRO WRIST STRAP
- NEOPRENE KNUCKLE
- THINSULATE LINED

SIZES XS-XXL



813F

- LADIES' GOATSKIN
- FLEECE LINED
- VELCRO WRIST STRAP
- KNUCKLE PROTECTOR

SIZES S-L

WINTER LINED



853

- TOP GRADE ELKSKIN
- KNIT WRIST
- THINSULATE LINED
- KEYSTONE THUMB

SIZES S-XXL



177

- DOUBLE PALMED PIGSKIN
- WINTER LINED KNIT WRIST
- INDEX FINGER & THUMB PATCH
- CURVED FINGER

SIZES S-XXL



851

- TOP GRADE ELKSKIN
- THINSULATE LINED
- SHIRRED ELASTIC BACK
- KEYSTONE THUMB

SIZES S-XXL



426F

- BUFFALO
- BLACK FLEECE LINED
- KEYSTONE THUMB
- SHIRRED ELASTIC BACK

SIZES S-XXL



855

- ECONOMY ELKSKIN
- RED FLEECE LINED
- KEYSTONE THUMB
- GREAT WEARING GLOVE

SIZES S-XXXL



755

- SHEEPSKIN LEATHER
- FLEECE LINED
- KEYSTONE THUMB
- SOFT AND COMFORTABLE

SIZES M-XXL



842

- PREMIUM DEERSKIN
- THINSULATE LINED
- SHIRRED ELASTIC BACK
- KEYSTONE THUMB

SIZES S-XXL



725T

- GRAIN GOATSKIN
- THINSULATE LINED
- SHIRRED ELASTIC BACK
- KEYSTONE THUMB

SIZES S-XXL



856

- DEERSKIN
- THINSULATE LINED
- PREMIUM LEATHER
- KEYSTONE THUMB
- SHIRRED ELASTIC BACK

SIZES S-XL



725WF

- GOATSKIN
- WHITE FLEECE LINED
- SHIRRED ELASTIC BACK

SIZES S-XXL

WINTER LINED



1663

- SUEDE DEERSKIN PALM
- FLEECE BACK
- HEATLOK LINED
- MODIFIED WING THUMB

SIZES XS-XXL



190

- PREMIUM GRAIN PIGSKIN
- CHOPPER MITTEN
- KNIT WRIST
- THINSULATE LINED

SIZES S-XXL



166F

- SPLIT COWHIDE
- THINSULATE LINED
- KEYSTONE THUMB
- SHIRRED ELASTIC BACK

SIZES S-XL



GM78P

- RAGG WOOL MITTEN
- SEWN ON LEATHER PATCH
- THINSULATE LINED
- MITTEN/FINGERLESS FEATURE

SIZES M-XL



57

- SPLIT COWHIDE
- THINSULATE LINED
- KEYSTONE THUMB
- SHIRRED ELASTIC BACK

SIZES S-XL



88

- ATLAS THERMA FIT
- GRAY LATEX PALM
- COTTON INSULATION
- 10 GAUGE GRAY KNIT SHELL
- HIGHEST QUALITY

SIZES S-XL



837

- SUEDE DEERSKIN DRIVER
- BLACK FLEECE LINED
- SOFT & SUPPLE LEATHER
- KEYSTONE THUMB

SIZES S-XXL



207F

- DOUBLE PALMED COWHIDE
- BLACK FLEECE LINED
- INDEX FINGER & THUMB PATCH
- ROLLED CUFF

SIZES S-XXL



880

- GRAIN COWHIDE
- THINSULATE LINED
- SHIRRED ELASTIC BACK
- KEYSTONE THUMB

SIZES S-XXL



191T

- DEERSKIN MITTEN
- THINSULATE LINED
- GLOVE SEPARATION INSIDE FOR ADDED WARMTH
- LONG KNIT WRIST

SIZES S-XXL

WINTER LINED



168

- WINTER LINED
- GRAIN PIGSKIN
- BOLTON THUMB
- STRETCH KNIT BACK

SIZES S-XXXL

WATERPROOF



170

- WATERPROOF
- THINSULATE LINED
- BOLTON THUMB
- STRETCH KNIT BACK

SIZES S-XXL



166T

- PREMIUM PIGSKIN
- FULL SOCK LINING
- KEYSTONE THUMB

SIZES S-XXL



27

- PIGSKIN
- WINTER LINED
- KNUCKLE STRAP
- OPEN CUFF

SIZES M-XXL

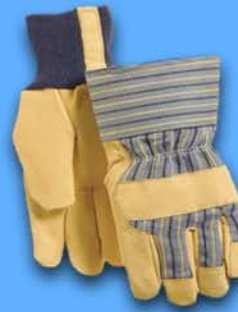
WATERPROOF



3656

- PREMIUM SPLIT LEATHER
- HEAVY THERMO LINED
- YELLOW HEAVY CANVAS BACK
- WATERPROOF LINING

SIZES L-XL



27KW

- PIGSKIN
- WINTER LINED
- KNUCKLE STRAP
- KNIT WRIST

SIZES S-XXL



267F

- GRAIN COWHIDE
- FLEECE LINED
- KEYSTONE THUMB
- SHIRRED ELASTIC BACK
- PATCH PALM FOR EXTRA WEAR

SIZES M-XL



WINTER LINED



460

- DOUBLE-DIPPED OIL RESISTANT PVC
- INSULATED SEAMLESS LINER
- GREAT GRIP
- COMFORTABLE AND FLEXIBLE

SIZES S-XL



4001BK

- WATER REPELLENT
- BREATHABLE PVC PALM COATING
- INSULATED KNIT LINER
- BLACK ON BLACK

SIZES S-XXL



3396HY

- 10 GAUGE LATEX DIPPED
- NAPPED TERRY
- WINTER LINED
- HI-VIZ YELLOW

SIZES S-XL



3396HO

- 10 GAUGE LATEX DIPPED
- NAPPED TERRY
- WINTER LINED
- HI-VIZ ORANGE

SIZES S-XL



338WG

- DOUBLE DIPPED LATEX
- 13 GAUGE ACRYLIC LINER
- WATERPROOF
- FLEXIBLE FIT

SIZES S-XXL

WATERPROOF



338

- DOUBLE DIPPED LATEX
- LOOPED TERRY INSULATION
- TEXTURED PALM

SIZES S-XXL



381BK

- WARM GRIP
- DURABLE SANDY NITRILE DIPPING
- WARM INSULATION FOR COLD DAYS

SIZES S-XXL



381HV

- HI-VIZ WARM GRIP
- DURABLE SANDY NITRILE DIPPING
- WARM INSULATION FOR COLD DAYS

SIZES S-XXL



A311

- CHILLY GRIP
- WARM SYNTHETIC LINER
- EXCELLENT GRIP WET OR DRY
- DURABLE RUBBER PALM
- FLEXIBLE AND COMFORTABLE

SIZES XS-XXL



KNIT JERSEY



17

- GRAY STRING KNIT LINER
- 7 COUNT KNIT
- COTTON/POLYESTER BLEND
- MEDIUMWEIGHT

SIZES S-L



9876BULK

- 13 COUNT FINE KNIT
- COTTON/ACRYLIC BLEND
- SKIN-TIGHT FIT
- SOLD BY THE DOZEN ONLY

SIZES S-XL



7560

- MINI DOT
- CAMO JERSEY
- MINI PVC DOTS ON PALM, INDEX FINGER & THUMB
- CLUTE PATTERN
- KNIT WRIST

SIZE L



96301

- STRING KNIT LINER
- 7 COUNT KNIT
- COTTON/POLYESTER BLEND
- BLEACHED WHITE
- ALSO SOLD BY THE DOZEN (96301BULK)

SIZES S-XL



7555

- CAMO JERSEY
- CLUTE PATTERN
- KNIT WRIST

SIZE L



9660

- DOT LINER
- 7 COUNT KNIT
- DOUBLE SIDED PVC DOTS
- BLEACHED WHITE

SIZES S & L



7538 & 7533

- 9OZ BROWN JERSEY
- CLUTE PATTERN
- KNIT WRIST
- ALSO SOLD BY THE DOZEN IN SIZE L (7533BULK)

(S) 7538 & (L) 7533



18P

- STRING KNIT LINER
- HEAVYWEIGHT KNIT
- DARK GRAY COLOR

SIZES S & L



6041 & 6051

- BROWN JERSEY
- MINI PVC DOTS ON PALM, INDEX FINGER, & THUMB.
- KNIT WRIST

(S) 6051 & (L) 6041



96751

- ORANGE HONEYCOMB
- HEAVYWEIGHT KNIT
- DOUBLE SIDED CLEAR PVC
- REVERSIBLE

SIZES S-XL



19

- LINED BROWN JERSEY
- RED FLEECE LINED
- SLIP-ON STYLE

SIZE L

CANVAS CHORE



430T

- 18OZ GREEN CHORE
- DOUBLE WOVEN CHORE
- KNIT WRIST

SIZES L-XL



195

- SUPER OIL RIG
- DOUBLE PALMED CANVAS
- HEAVY WEIGHT
- KNIT WRIST

SIZE L



4000

- 14OZ YELLOW CHORE
- STRAIGHT THUMB
- KNIT WRIST

SIZE L



1081

- DOTTED SINGLE PLY CANVAS
- MEDIUM WEIGHT
- KNIT WRIST

SIZE L



125

- 12OZ CANVAS
- KNIT WRIST

SIZE L



11080

- DOTTED SINGLE PLY CANVAS
- LIGHT WEIGHT
- KNIT WRIST

SIZE L



10

- 10OZ CANVAS
- KNIT WRIST

SIZE L

COATED



912

- BLACK SINGLE DIPPED PVC
- ROUGH FINISH
- INTERLOCK LINED

SIZE L



2731

- GREEN DOUBLE DIPPED PVC
- KNIT WRIST
- JERSEY LINED

SIZE L



9760

- 3/4 COATED NITRILE DIP
- BLUE NITRILE COATED PALM
- COTTON JERSEY LINING
- OPEN CUFF

SIZE L



2733

- GREEN DOUBLE DIPPED PVC 12"
- GAUNTLET CUFF
- JERSEY LINED

SIZE L



9761

- FULL COATED NITRILE DIP
- BLUE NITRILE COATED PALM
- COTTON JERSEY LINING
- OPEN CUFF

SIZE L



2734

- GREEN DOUBLE DIPPED PVC 14"
- GAUNTLET CUFF
- JERSEY LINED

SIZE L



9750

- NITRILE COATED
- BLUE NITRILE COATED PALM
- COTTON JERSEY LINING
- KNIT WRIST

SIZE L



2738

- GREEN DOUBLE DIPPED PVC 18"
- GAUNTLET CUFF
- JERSEY LINED

SIZE L



6632

- BLUE PVC 12"
- TRIPLE DIPPED
- SANDPAPER FINISH
- BRUSHED INTERLOCK LINED

SIZES M-XL

COATED



4055

- BLUE NEOPRENE OVER YELLOW LATEX
- EMBOSSED GRIP
- 13 INCH FLOCK LINED

SIZES S-XL



3240

- 11 MIL GREEN NITRILE
- 12 INCH FLOCK LINED

SIZES S-XL



2876

- ORANGE HEAVY LATEX
- EMBOSSED GRIP
- FLOCK LINING - EASY ON/OFF

SIZES M-XL

DIPPED

CUT RESISTANT



399

- SUPER THIN 21 GAUGE CUT KNIT
- TUNGSTEN WOVEN FIBERS
- A6 CUT RATING
- NITRILE FOAM COATED

SIZES S-XL

CUT RESISTANT



99

- TPR DIPPED FOAM NITRILE
- CE RATED CUT RESISTANT SHELL
- TPR PROTECTION ON FINGERS & BACK

SIZES M-XXL



3270

- NITRILE COATED
- 13 GAUGE NYLON SHELL
- ECONOMY GRADE

SIZES S-XL

CUT RESISTANT



4939

- POLYURETHANE CUT GLOVE
- CE CUT RATED SHELL
- THIN & DURABLE PU COATING

SIZES S-XL



370

- ATLAS ASSEMBLY GRIP
- GRAY NITRILE COATED
- 13 GAUGE BLACK NYLON SHELL
- LIGHT WEIGHT
- CUT RESISTANT

SIZES S-XL



P-200

- NITRILE FOAM COATED
- 13 GAUGE TIGHT KNIT
- COMFORTABLE & BREATHABLE
- EXCEPTIONAL GRIP

SIZES S-XXL



638

- BLACK POLYURETHANE DIPPED
- 13 GAUGE KNIT
- ULTRA LIGHT FEEL

SIZES S-XL



603

- FOAM NITRILE WITH DOTS
- 15 GAUGE NYLON SHELL

SIZES S-XL

DIPPED



366

- TOUCH SCREEN
- NITRILE FOAM COATED
- COMFORTABLE & BREATHABLE
- EXCEPTIONAL GRIP

SIZES S-XXL



3702

- NITRILE COATED
- 13 GAUGE KNIT LINER
- GREAT VALUE
- BREATHABLE & COMFORTABLE

SIZES S-XL



322

- MICRO FOAM NITRILE
- DIPPED WITH SILICONE
- DOTS FOR ADDED GRIP
- 13 GAUGE KNIT

SIZES S-XL



522WG

- SOFT NITRILE COATING
- OIL RESISTANCE
- LONG LASTING GRIP
- UNIQUE KNIT LINER

SIZES S-XL



371

- BREATHABLE 13 GAUGE BAMBOO LINER
- DURABLE NITRILE COATING
- EXTREMELY COMFORTABLE

SIZES S-XL



631BKBULK

- 13 GAUGE BLACK POLYESTER SHELL
- BLACK ULTRA-THIN NITRILE COATED
- SOLD BY THE DOZEN ONLY
- BULK WITHOUT HANGTAGS



SIZES M-XL



631BLBULK

- 13 GAUGE BLUE POLYESTER SHELL
- BLACK ULTRA-THIN NITRILE COATED
- SOLD BY THE DOZEN ONLY
- BULK WITHOUT HANGTAGS

SIZES M-XL



631RDBULK

- 13 GAUGE RED POLYESTER SHELL
- BLACK ULTRA-THIN NITRILE COATED
- SOLD BY THE DOZEN ONLY
- BULK WITHOUT HANGTAGS

SIZES M-XL



LATEX DIPPED



3378

- FLEX GRIP
- BLUE LATEX PALM
- 13 GAUGE GRAY KNIT SHELL
- LIGHT & FLEXIBLE

SIZES S-XL



318

- DOUBLE DIPPED LATEX
- TEXTURED PALM
- EXCELLENT GRIP
- 13 GAUGE NYLON KNIT

SIZES S-XXL



81

- BLUE LATEX PALM
- 10 GAUGE GRAY KNIT SHELL
- CUT RESISTANT

SIZES S-XL



310

- HI-VIZ LATEX DIPPED
- TEXTURED PALM
- EXCELLENT GRIP
- 13 GAUGE KNIT

SIZES M-XL



82

- BLUE LATEX PALM
- 10 GAUGE KNIT SHELL
- ECONOMY GRADE

SIZES M-XL



80

- ATLAS FIT
- BLUE LATEX PALM
- 10 GAUGE GRAY KNIT SHELL
- CUT RESISTANT
- HIGHEST QUALITY

SIZES S-XL



84

- BROWN LATEX PALM
- 13 GAUGE CAMO KNIT SHELL
- CUT RESISTANT

SIZES M-XL



88

- ATLAS THERMA FIT
- GRAY LATEX PALM
- COTTON INSULATION
- 10 GAUGE GRAY KNIT SHELL
- HIGHEST QUALITY

SIZES S-XL



422WG

- UNIQUE LATEX COATING
- SPECIAL BEE PATTERN KNIT LINER
- HIGH GRIP PERFORMANCE
- COMFORTABLE & BREATHABLE

SIZES S-XL



330

- ATLAS RE-GRIP
- REINFORCED COATING
- 10 GAUGE GRAY KNIT SHELL
- BLACK LATEX PALM
- LASTS 2 TIMES LONGER THAN ORIGINAL ATLAS (STYLE 80)

SIZES S-XL

DISPOSABLE

2016W



- NITRILE DISPOSABLE
- 6 MIL
- POWDER FREE

SIZES S-XL

2900W



- VINYL DISPOSABLE
- 5 MIL
- LIGHTLY POWDERED

SIZES S-XL
2910W POWDER FREE

2800W



- LATEX DISPOSABLE
- 5 MIL
- LIGHTLY POWDERED

SIZES S-XL
2810W POWDER FREE

2015W



- BLACK NITRILE DISPOSABLE
- 4 MIL
- POWDER FREE

SIZES S-XL

2028HO



- DIAMOND GRIP TEXTURE
- 8 MIL NITRILE
- LIGHTLY POWDERED

SIZES M-XL

LADIES' GARDEN



533

- TOUCH SCREEN
- SYNTHETIC LEATHER
- SPANDEX BACK
- FLORAL DESIGN
- LADIES' SIZES

SIZES M-L



NT370

- ATLAS NITRILE
- NITRILE COATED
- THIN NYLON SHELL
- LIGHTWEIGHT & FLEXIBLE

SIZES S-L



828

- GRAIN LEATHER PALM WITH PADDING
- STRETCH BACK FOR TIGHT FIT
- VELCRO WRIST STRAP

SIZES S-L



539

- BROWN SYNTHETIC LEATHER PALM
- FLORAL PRINT BACK
- LOOP PULL STRAP FOR EASY ENTRY

SIZES S-L



531

- GOLD SYNTHETIC LEATHER PALM
- LIGHTWIEGHT STRETCH BACK
- EASY ENTRY OPEN CUFF

SIZES S-L



4632

- COLORED NITRILE DIPPED
- 13 GAUGE KNIT LINER
- 4 ASSORTED COLORS
- LADIES' ONE SIZE

SIZE L



515

- NYLON KNIT LINER
- BREATHABLE NITRILE COATING
- GREAT FEEL

SIZES S-L



4634

- 13 GAUGE KNIT LINER
- 4 ASSORTED PATTERNS
- CLEAR NITRILE DIPPED

SIZE M



LADIES' GARDEN



260

- POLYURETHANE DIPPED
- 13 GAUGE KNIT LINER
- 3 ASSORTED COLORS
- UNIQUE PATTERN DESIGN
- LADIES' SIZES

SIZES S-L



507

- BROWN SYNTHETIC LEATHER PALM
- FLORAL PRINT BACK
- LOOP PULL STRAP FOR EASY ENTRY

SIZES S-L



422WG

- UNIQUE LATEX COATING
- SPECIAL BEE PATTERN KNIT LINER
- HIGH GRIP PERFORMANCE
- COMFORTABLE & BREATHABLE

SIZES S-XL



522WG

- SOFT NITRILE COATING
- OIL RESISTANCE
- LONG LASTING GRIP
- UNIQUE KNIT LINER

SIZES S-XL



551

- LONG CUFF ROSE GLOVE
- SYNTHETIC LEATHER PALM
- EXTRA WEAR PATCHES ON PALM
- LADIES' SIZES

SIZES M-L

LADIES' LEATHER



811W

- DEERSKIN ECONOMY
- THINNER LEATHER FOR BETTER FEEL
- SHIRRED ELASTIC BACK
- KEYSTONE THUMB
- LADIES' SIZES

SIZES S-L



809W

- GRAIN DEERSKIN PALM
- SUEDE DEERSKIN BACK
- KEYSTONE THUMB FOR COMFORTABLE FIT

SIZES S-L



813F

- FLEECE LINED
- GOATSKIN LEATHER
- PINK SPANDEX BACK
- PATCH PALM
- VELCRO WRIST STRAP

SIZES S-L



813

- GOATSKIN PINK
- PATCH PALM
- VELCRO WRIST STRAP
- LEATHER KNUCKLE PROTECTOR

SIZES S-L



825

- SUEDE COWHIDE
- BREATHABLE MESH BACK
- OPEN CUFF
- LADIES' ONE SIZE

SIZES S-L



526

- SYNTHETIC LEATHER PALM
- PADDED PALM
- SLIP ON CUFF
- WASHABLE

SIZES M-L



LADIES' LEATHER



166TW

- PREMIUM PIGSKIN
- FULL SOCK LINING
- KEYSTONE THUMB
- LADIES' SIZES

SIZES M-L

WATERPROOF



170W

- WATERPROOF
- THINSULATE LINED
- BOLTON THUMB
- STRETCH KNIT BACK
- LADIES' SIZES

SIZES M-L



USA250W

- LADIES' "GOLD FIT"
- PREMIUM COWHIDE
- SEAMLESS PALM
- WING THUMB
- EXTRA SOFT LEATHER
- LADIES' SIZES

SIZES M-L



855W

- GRAIN ELKSKIN
- FLEECE LINED
- LIGHTWEIGHT
- KEYSTONE THUMB
- GREAT WEARING GLOVE
- ECONOMY GRADE
- LADIES' SIZES

SIZES M-L



211W

- PREMIUM GRAIN COWHIDE
- WRAPAROUND INDEX FINGER
- BREATHABLE MESH BACK
- COMFORTABLE AND DURABLE

SIZES S-L



168W

- PREMIUM PIGSKIN
- WINTER LINED
- BOLTON THUMB & STRETCH BACK
- LADIES' SIZES

SIZES M-L



KID'S WINTER LINED



1666

- KID'S SUEDE DEERSKIN
- SPLIT DEER PALM
- FLEECE BACK
- ASSORTED COLORS
- HEATLOK LINED

SIZES S-L

WATERPROOF



170K

- WATERPROOF
- THINSULATE LINED
- BOLTON THUMB
- STRETCH KNIT BACK

SIZES S-M



168K

- WINTER LINED
- BOLTON THUMB
- STRETCH KNIT BACK

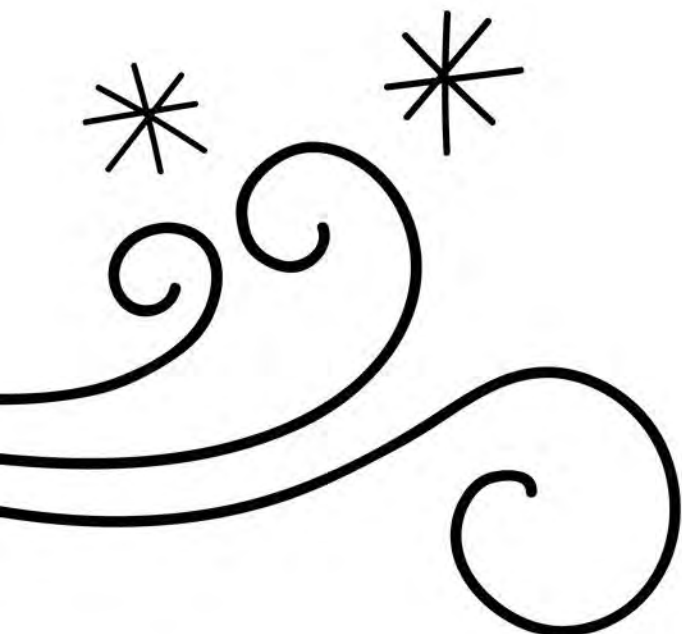
SIZES S-M



166TK

- GRAIN PIGSKIN
- WINTER LINED
- KEYSTONE THUMB

SIZES M-L



7792K

- KID'S BROWN JERSEY

SIZE L



GM78PK

- KIDS RAG WOOL MITTEN
- LEATHER PALM PATCH
- WINTER LINED
- MITTEN/FINGERLESS FEATURE

SIZE M-L

KID'S UNLINED



16K

- GOATSKIN
- SEAMLESS PALM
- WEAR PALM PATCHES
- NEOPRENE KNUCKLE

SIZE L



1570

- SPLIT COWHIDE
- KID'S LEATHER PALM
- OPEN CUFF

SIZES S-L



2150K

- DEERSKIN
- SEAMLESS PALM
- VELCRO WRIST STRAP

SIZES L



1571

- SPLIT COWHIDE
- KID'S LEATHER PALM
- KNIT WRIST

SIZES S-L



2153K

- GOATSKIN
- SEAMLESS PALM
- VELCRO WRIST STRAP
- NEOPRENE KNUCKLE

SIZES S-L



204

- GRAIN COWHIDE
- STRAIGHT THUMB

SIZES S-L



810K

- DEERSKIN
- PREMIUM DEERSKIN
- SOFT & SUPPLE
- KEYSTONE THUMB
- ROLLED CUFF

SIZES S-L



203

- SPLIT COWHIDE
- STRAIGHT THUMB

SIZES S-L



806K

- PREMIUM DEERSKIN
- SOFT & SUPPLE
- KEYSTONE THUMB
- ROLLED CUFF

SIZES L



KT440ACT

- TEXTURED RUBBER PALM DIP
- COLORFUL & WASHABLE
- ASSORTED COLORS & CHARACTERS

SIZE L

RACKS & DISPLAYS



DISPLAY STAND

- 72 PAIR CARDBOARD DISPLAY
- FREE STANDING WITH HEADER
- ASSEMBLED SIZE: 14"D X 17"W X 58"H



DUMP BIN

- HOLDS UP TO 12 DZ PAIRS
- MADE FROM HEAVY WEIGHT DURABLE CARDBOARD
- 18"D X 24"W X 33"H



RACK24 WOOD DISPLAY

- 24 PEG DISPLAY
- DOUBLE SIDED FOR VISIBILITY
- STURDY SOLID BUILT DISPLAY
- METAL DISPLAY HEADER
- 58X22X26 INCHES



RACK32 WOOD DISPLAY

- 32 PEG DISPLAY
- DOUBLE SIDED FOR VISIBILITY
- STURDY SOLID BUILT DISPLAY
- METAL DISPLAY HEADER
- 72X22X26 INCHES



RACK50 WOOD DISPLAY

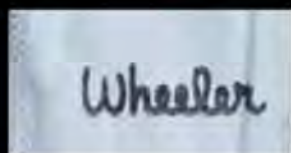
- 50 PEG DISPLAY
- DOUBLE SIDED FOR VISIBILITY
- STURDY SOLID BUILT DISPLAY
- METAL DISPLAY HEADER
- 84X22X32 INCHES

CUSTOMIZATION

CUSTOMIZE YOUR GLOVE

PUT YOUR STORE LOGO, SAFETY MESSAGE OR ANY OTHER MARKING ON THE BACK OF MOST GLOVES WE CARRY.

CHOOSE FROM THE FOLLOWING OPTIONS:



INK STAMPING

PERMANENT INK PRESSED ONTO THE BACK OF LEATHER DRIVERS. MULTIPLE COLORS AVAILABLE.



HEAT BRANDING

HOT DYE STAMP BURNS AND EMBOSSES THE SURFACE OF THE LEATHER. BEST CHOICE FOR THE BACK OF GRAIN DRIVERS.



PAD PRINTING

GREAT FOR ROUGH OR UNEVEN SURFACES. WORKS GREAT ON SPLIT LEATHER, KNIT, AND CHORE GLOVES.



BELTS

FULL STRAP LEATHER BELTS



MEN'S BELTS

B110

SIZES 30-44

B110X

SIZES 46-50



1-1/2 INCH BROWN OIL TANNED WITH ROLLER BUCKLE, SNAPS & ROLLED EDGE TRIM

B111

SIZES 30-44

B111X

SIZES 46-50



1-1/2 INCH BLACK OIL TANNED WITH ROLLER BUCKLE, SNAPS & ROLLED EDGE TRIM

B112

SIZES 30-44

B112X

SIZES 46-50



1-1/2 INCH TAN OIL TANNED WITH ROLLER BUCKLE, SNAPS & STITCHED ROLLED EDGE TRIM

B113

SIZES 30-44

B113X

SIZES 46-50



1-1/2 INCH BROWN OIL TANNED WITH ROLLER BUCKLE, SNAPS & TRIPLE STITCHED EDGE TRIM

MEN'S BELTS

B121

SIZES 30-44

B121X

SIZES 46-50



1-1/2 INCH TAN OIL TANNED WITH ROLLER BUCKLE, SNAPS, EDGE STITCH, & CENTER RAWHIDE STITCH

B127

SIZES 30-44

B127X

SIZES 46-50



1-1/2 INCH BLACK OIL TANNED WITH ROLLER BUCKLE, SNAPS, EDGE STITCH, & CENTER RAWHIDE STITCH

B128

SIZES 30-44

B128X

SIZES 46-50



1-3/4 TO 1-1/2 " TAPERED BLACK OIL TANNED WITH ROLLER BUCKLE, SNAPS & DOUBLE STITCHED EDGE TRIM

B124

SIZES 30-44

B124X

SIZES 46-50



1-3/4 TO 1-1/2 " TAPERED TAN OIL TANNED WITH ROLLER BUCKLE, SNAPS & DOUBLE STITCHED EDGE TRIM

MEN'S BELTS

B125

SIZES 30-44

B125X

SIZES 46-50



1-1/2 INCH BROWN OIL TANNED WITH ROLLER BUCKLE, SNAPS & CELTIC BARB DESIGN

B123

SIZES 30-44

B123X

SIZES 46-50



1-1/2 INCH DARK BROWN OIL TANNED STRAP LEATHER, ROLLER BUCKLE & SNAPS

B122

SIZES 30-44

B122X

SIZES 46-50



1-1/2 INCH BROWN OIL TANNED RANGER BELT, SNAPS, SOLID BUCKLE, AND DOUBLE EDGE STITCH.



MEN'S BELTS

B303

SIZES 30-44

B303X

SIZES 46-50



1-1/2 INCH BLACK FINISHED BASKET WEAVE, RAWHIDE BACK WITH CHROME BUCKLE SNAPS

B305

SIZES 30-44

B305X

SIZES 46-50



1-1/2 INCH BROWN FINISHED BASKET WEAVE, RAWHIDE BACK WITH BRASS BUCKLE SNAPS

B306

SIZES 30-44

B306X

SIZES 46-50



1-1/2 INCH TAN FINISHED BASKET WEAVE, RAWHIDE BACK WITH BRASS BUCKLE SNAPS

B4552

SIZES 30-44

B4552X

SIZES 46-50



1-3/4 TO 1-1/2 INCH TAPERED BLACK FINISH, DOUBLE EDGE STITCH, ROLLER BUCKLE & SNAPS

B4553

SIZES 30-44

B4553X

SIZES 46-50



1-3/4 TO 1-1/2 INCH TAPERED TAN/BLACK FINISH, DOUBLE EDGE STITCH, ROLLER BUCKLE & SNAPS

MEN'S BELTS

B4576

SIZES 30-44

B4576X

SIZES 46-50



1-1/2 INCH BROWN OIL TANNED WITH SINGLE STITCH EDGE TRIM, ROLLER BUCKLE & SNAPS

B4575S

SIZES 30-44

N/A

SIZES 46-50



1-1/2 INCH BLACK OIL TANNED WITH RAWHIDE WEAVE, 3 FLORAL CONCHOS, ROLLER BUCKLE & SNAPS

B4576S

SIZES 30-44

N/A

SIZES 46-50



1-1/2 INCH BROWN OIL TANNED WITH RAWHIDE WEAVE, 3 FLORAL CONCHOS, ROLLER BUCKLE & SNAPS

B5402

SIZES 30-44

B5402X

SIZES 46-50



1-1/2 INCH BROWN FLORAL WITH OVERLAY TIPS, BRASS BUCKLE & SNAPS

B7001

SIZES 30-44

B7001X

SIZES 46-50



1-1/4 INCH BLACK FINISH BRESS BELT, RAWHIDE BACK, CHROME BUCKLE & SNAPS

WOMEN'S BELTS

B4270

SIZES 30-40



1-1/2 INCH WHITE FLORAL ON TAN FINISH WITH CHROME BUCKLE & SNAPS

B5517

SIZES 30-40



1-1/2 INCH BUTTERFLY EMBOSS FINISHED BELT, CHROME BUCKLE & SNAPS



KID'S BELTS

B5701

SIZES 20-28



1-1/4 INCH BROWN FULL GRAIN LEATHER BASKET WEAVE WITH DEER

B5708

SIZES 20-28



1-1/4 INCH BROWN FULL GRAIN LEATHER WITH HORSES & MOUNTAINS

B5719

SIZES 20-28



1-1/4 INCH BROWN FULL GRAIN LEATHER WITH BUTTERFLIES & FLOWERS



WALLETS

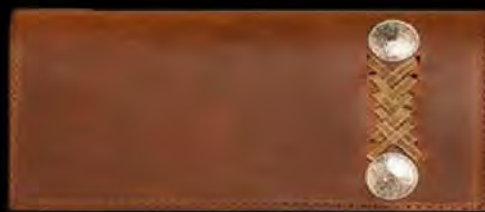
W5002

LONG
BLACK



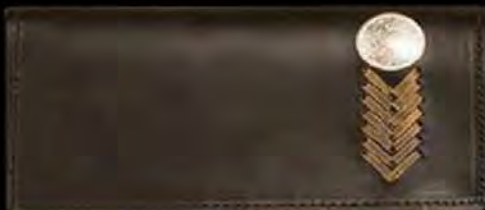
W5003

LONG
BROWN



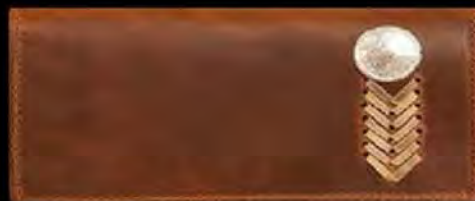
W5004

LONG
BLACK



W5005

LONG
BROWN



W5006-20

LONG
BROWN



W5007

POCKET
BROWN



W5006-41

LONG
LIGHT BROWN



W5008-20

CHECKBOOK
BROWN



WALLETS

W5010

LONG
LIGHT BROWN



W5012

LONG
BROWN



W5013-20

LONG
BLACK



W5013-41

LONG
BLACK



W5014

LONG
LIGHT BROWN



W5016

POCKET
BLACK



W5018

LONG
BLACK



W5019

LONG
BROWN





SALT CITY SALES GOLDEN STAG GLOVES

1104 CAMBRIDGE CIR STE 3
LAYTON, UT 84040

TOLL FREE (866)663-3070

PHONE (801)295-3070

FAX (866)573-7137

WWW.GOLDENSTAGGLOVE.COM

2023