

---

# **Clinical Scenario #2: Operating Room to Intensive Care Unit**

## **Part 3: Analysis of Current State Workflow**

**Working Draft Version 3.1**

# **Quantum Medical Device Interoperability (QMDI) Project**

PI: Julian M. Goldman, MD

**Funded by  
National Institute of Biomedical Imaging & Bioengineering**

**Prepared by DocBox Inc.**

**and**

**Medical Device Plug-and-Play (MD PnP) Program  
CIMIT / Massachusetts General Hospital**

Current versions of this and related documents can be found at <http://mdpnp.org>

**August 2012**

This work is licensed under a Creative Commons Attribution-ShareAlike 3.0 Unported License

## Contents

Description.....	<b>Error! Bookmark not defined.</b>
Clinical Workflow Analysis.....	4
Zachman Framework.....	4
Data Model Detail.....	9
OR to ICU As Is Workflow.....	9
Estimated Time of Arrival in ICU.....	11
getPhysData(patientID, vitals).....	11
manualProcess: Nurse Assigns ICU bed Location.....	11
End Transfer.....	11
Post Patient ICU Set-up.....	12
X-ray Procedure.....	12
X-ray Vent Procedure.....	12
getISData(patientID, history).....	19
manualProcess: Clinical Examination.....	26
manualProcess: Complete Communications Sheet.....	27
manualProcess: Ensure Lines and Cables are Properly Labeled.....	27
manualProcess: Hand-off Communications.....	27
manualProcess: Patient in Transport.....	35
manualProcess: Post Patient ICU Set-up.....	37
manualProcess: Pre-Patient ICU Set up.....	46
manualProcess: Transfer patient to ICU.....	49
manualProcess: Untangle lines and cables.....	49
setISData(patientID, transfer, time, fromLocation, toLocation).....	50
setObservationData(ABG).....	51
setObservationData(IVLines).....	57
setObservationData(disposables).....	66
setOrders(patientID).....	72
setOrders(patientID, bloodRequest, dripRequest).....	73
setOrders(patientID, deviceRequest).....	77
Begin General Care.....	86
ICU Staff.....	87
Patient in ICU.....	87
Patient in OR.....	87
Arterial Lines Connected.....	88
Blood Products.....	88
Central Venous Lines Connected.....	88
Connected Disposable.....	89
DNR Status.....	89
Drugs.....	90
Family Contact or Representative.....	90
Identify Diet Restrictions.....	90
InformationItem1.....	91

Infusion Pump .....	91
Meds/Drips .....	91
Monitor .....	91
On Ventilator .....	92
Other Device .....	92
PIC .....	92
Past Hospitalization .....	93
Patient Consent Forms .....	93
Patient Identification Information.....	93
Previous Medical History .....	94
Provider.....	94
Pulmonary Artery Lines Connected .....	95
Ventilator .....	95
Vitals .....	95
X-ray Needed.....	96
getISData(patientID); getOrders(patientID) .....	96
A. OR to Pre-Patient Setup Sequence Diagram .....	97
B. Transport to ICU Post-Patient Setup Sequence Diagram.....	98

## Clinical Workflow Analysis

- Diagram Boxes in Green signal a Manual Clinical Process (i.e. a nurse hangs an IV bag)
- Diagram Boxes in Red signal that a Comparison between two data points is required (compare dose on pump with dose in Order)
- A  $\infty$  at the bottom of a workflow block signals that there is an additional page of workflow.

## Zachman Framework

### 1. Scope

- a. What: Patient transfer/handoff data, essential patient information, Care orders, medication orders, timing, patient, medical device data, medical devices, patient history, type of procedure, complications in OR, family contact information, care plans
- b. How: Delivery of care orders, compile device checklist, assure checklist is completed, verbal communication, nurse-to-nurse/nurse-to-physician/physician-to-physician handoffs
- c. Where: Locations within Hospital (i.e. OR to ICU), Military transport
- d. Who: Patient, physician, nurse, respiratory technicians, therapists, family, pharmacist, auxiliary staff (i.e. orderly), materials management, OR staff, ICU staff, PACU staff, intensivist, anesthesiologist, surgeon, BMET's, IT, CE's, hospital management
- e. When: post-surgery, patient status change
- f. Why: Surgery completed, patient's status changes, change in therapy, change in care

### 2. Conceptual

- a. What:
  - i. ICU Nurse
    1. Care plan, previous assessments/patient status, orders, last 20 minutes of activity in OR, allergy list, medications list, time of arrival, device list, complications, labs, family contact info, EKG
  - ii. Respiratory Tech
    1. Vent orders
  - iii. Pharmacist
    1. Medication orders, allergy list
  - iv. Auxiliary staff
    1. Time of patient transfer
  - v. Materials Management
    1. Device list, disposables list
  - vi. OR staff
    1. Patient status, patient assessments, medications list, care plan, family contact info,
  - vii. Intensivist
    1. Type of operation, previous assessments/patient status, orders, last 20 minutes of activity in OR, medications list, complications, labs,
  - viii. Anesthesiologist
    1. Patient status, allergy list, medications list, complications, type of operation, type of anesthesia, EKG
  - ix. Surgeon

1. Patient status, medications list, potential complications, labs, type of operation,
  - x. BMET's
    1. Device list
  - xi. CE's
  - xii. IT
  - xiii. Hospital management
- b. How
- i. Communications sheet (sent from anesthesiologist to ICU)
    1. Patient status, vent settings, IV assessment, diagnosis, type of operation, medications, anesthesia, allergies, patient ID, DNR status, vitals, complications, concerns/risk
  - ii. Verbal communication (between anesthesiologist and ICU/OR staff and ICU)
    1. Information/observations during moving of the patient, complications, concerns/risk
- c. Where
- i. ICU nurse receives all information in the ICU. Handoff conversations occur in the ICU.
  - ii. Pharmacist receives medication orders in pharmacy
  - iii. OR staff performs patient assessments in OR
  - iv. Intensivist has conversation with anesthesiologist in ICU
  - v. Anesthesiologist fills out communications sheet in OR. Conversation with intensivist and ICU nurse occurs in ICU.
  - vi. Surgeon fills out post-op orders in OR
- d. When
- i. ICU nurse receives post-op orders and 20 minutes of OR activity prior to patient arrival. All handoff information is received at patient arrival. Device settings are transferred at patient arrival. Patient care plan is written after handoff.
  - ii. Respiratory Tech transfers vent settings at patient arrival.
  - iii. Pharmacist receives medication orders after the surgeon places them.
  - iv. Auxiliary staff is notified of patient transfer towards end of surgery.
  - v. Materials management receives device/disposables orders when they are entered.
  - vi. OR staff performs patient assessments post-op.
  - vii. Intensivist has handoff conversation with anesthesiologist at patient arrival in ICU.
  - viii. Anesthesiologist fills out communications sheet at end of surgery. Handoff conversation occurs at patient arrival.
  - ix. Surgeon fills out orders after surgery is complete.
- e. Why
- i. ICU nurse needs post-op orders to prepare the ICU to receive the patient. Last 20 minutes of OR activity is necessary to understand patient status and any significant events that occurred in OR.
  - ii. Pharmacist receives medication orders prior to patient arrival so medications are prepared and ready for administration.
  - iii. OR staff performs patient assessments to help ICU prepare for patient.
  - iv. Intensivist communicates with the anesthesiologist to understand the patient
  - v. Anesthesiologist uses the communications sheet to summarize the case and prepare for the transfer.

### 3. Logical

#### a. What

- i. ICU Nurse
  - 1. Type of operation, type of anesthesia, IV fluids, urine output, patient status and assessments, post-op orders, care plan, labs, complications, significant events in OR, drains, device list, medication list, allergies, family contact, code status, last 20 minutes of activity in OR, ETA of patient, EKG
- ii. Respiratory Tech
  - 1. Vent mode, tidal volume, inspiration time, frequency, O<sub>2</sub> concentration, inspiration pressure, pressure support, pressure rise time, other settings applicable to the mode
- iii. Pharmacist
  - 1. Medications, dosing, allergies, drug interactions, ETA of patient
- iv. Auxiliary Staff
  - 1. Time of transport, location (to/from)
- v. Materials Management
  - 1. Device list, disposables list, time/frequency of disposables replacement, ETA of patient
- vi. OR Staff
  - 1. Patient assessments (IV/disposables), patient status, medications list, dosing, allergies, ABG, labs
- vii. Intensivist
  - 1. Type of operation, type of anesthesia, complications, significant events in OR, post-op orders, patient status and assessments, medications, last 20 minutes of activity in OR, drains, EKG
- viii. Anesthesiologist
  - 1. Patient status, type of operation, type of anesthesia, IV fluids, medications, allergies, complications, fluid output, blood loss, vent mode, vent settings, code status, EKG, significant events
- ix. Surgeon
  - 1. Patient status, medications list, potential complications, labs, type of operation,
- x. BMET's
  - 1. Device list, device locations, device status
- xi. CE's
- xii. IT
- xiii. Hospital Management

#### b. How

- i. Communications sheet (sent from anesthesiologist to ICU)
  - 1. Physician, allergies, type of operation, code status, family contact, patient assessment (IV/disposables), labs, pain score, medication list, drains, concerns/risks, ventilator settings, pre-op condition,
- ii. Verbal (between anesthesiologist and ICU/OR staff and ICU)
  - 1. Concerns/risk, patient ID, type of operation, significant events during moving of the patient,

#### c. Where

- i. ICU nurse receives all information while in the ICU. Information exchange between OR nurse and ICU nurse may occur in OR or ICU. Handoff conversations between nurses and anesthesiologist occur in the ICU.
  - ii. Pharmacist receives medication orders and allergy list in pharmacy
  - iii. OR staff performs patient assessments in OR. Lab results are reported back to the OR.
  - iv. Intensivist receives communications sheet and has conversation with anesthesiologist in ICU.
  - v. Anesthesiologist fills out communications sheet in OR. Conversation with intensivist and ICU nurse occurs in ICU.
  - vi. Surgeon fills out post-op orders in OR
- d. When
  - i. ICU nurse receives post-op orders and 20 minutes of OR activity prior to patient arrival. All handoff information is received at patient arrival. Device settings are transferred at patient arrival. Patient care plan is written after handoff. New labs are ordered after handoff. EKG is collected within the hour after transfer.
  - ii. Respiratory Tech transfers vent settings at patient arrival.
  - iii. Pharmacist receives medication orders after the surgeon places them. Also receives ETA of patient in ICU so medications are sent at the correct time.
  - iv. Auxiliary staff is notified of patient transfer towards end of surgery.
  - v. Materials management receives device/disposables orders when they are entered. Also receives ETA of patient in ICU so disposables are received at the correct time.
  - vi. OR staff performs patient assessments post-op. Labs are ordered upon request.
  - vii. Intensivist has handoff conversation with anesthesiologist and receives communications sheet at patient arrival in ICU.
  - viii. Anesthesiologist fills out communications sheet at end of surgery. Handoff conversation occurs at patient arrival. 8-12 hours after handoff anesthesiologist checks in with patient.
  - ix. Surgeon fills out orders after surgery is complete. 30-60 minutes after handoff, surgeon checks in with patient.
- e. Why
  - i. ICU nurse needs all the data to prepare for the patient and formulate a care plan. Post-op orders, device list, and medication list are necessary for pre-patient ICU setup. EKG after transfer is a check to make sure patient's heart function is normal.
  - ii. Respiratory Tech needs the desired ventilator settings to successfully transfer the patient to the new ventilator in the ICU
  - iii. Pharmacist needs to prepare medications for administration and must have them ready at the appropriate time.
  - iv. Auxiliary staff needs to be notified of the patient transfer because they are the people who conduct the physical moving of the patient.
  - v. Materials management handles disposables (tubing etc...) so they need to know what the nursing staff needs and when they need it.
  - vi. OR staff conducts patient assessments and orders labs in to give the ICU nurses/Intensivist a complete picture of the patient at handoff
  - vii. Intensivist receives all data to care for the patient from the communications sheet and from the verbal handoff from the anesthesiologist.

- viii. Anesthesiologist fills out communications sheet to organize information for the handoff. Post-op visit is conducted to check for awareness, complications, signs of stroke, kidney function (labs, urine), and vitals.
- ix. Surgeon fills post-op orders for ICU nurse and intensivist to care for the patient. Checks in with patient after handoff to assure everything is going well.



# Data Model Documentation

## Data Model Detail

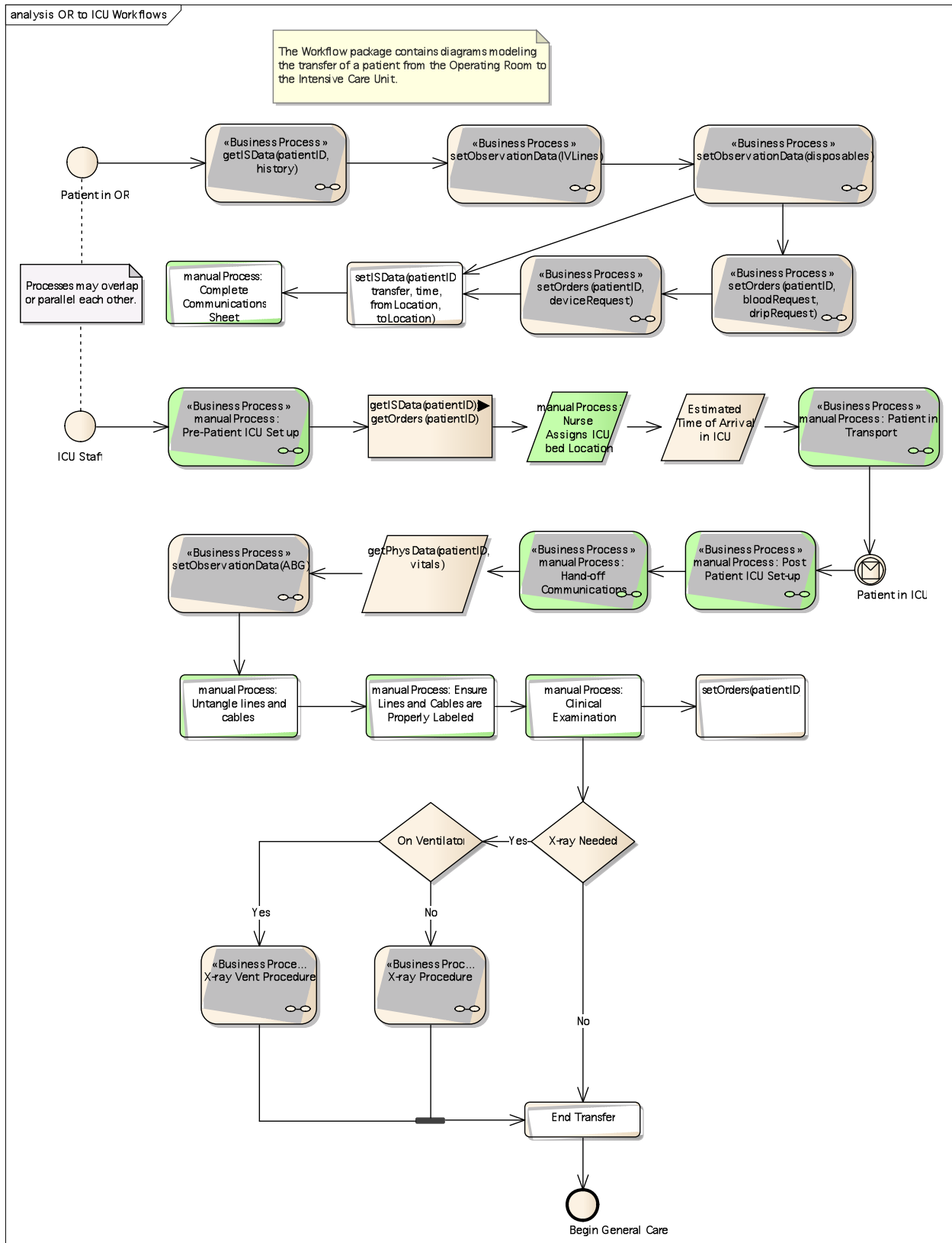
This document provides an overview of the data model. For simpler and more focused reports, simply copy this initial template and turn off the sections not required.

## OR to ICU As Is Workflow

<i>Type:</i>	<b><u>Package</u></b>
<i>Package:</i>	OR to ICU Process Model
<i>Detail:</i>	<i>Created on 1/5/2006. Last modified on 8/16/2012.</i>
<i>Notes:</i>	

### **OR to ICU Workflows**

<i>Created By:</i>	Michael on 1/11/2006
<i>Last Modified:</i>	8/17/2012, <i>Version:</i> 1.0



## Estimated Time of Arrival in ICU

*Database:* <none>, *Stereotype:* «information», *Package:* OR to ICU As Is Workflow  
*Detail:* Created on 5/25/2011. Last modified on 5/25/2011.  
*Notes:*

### Connections

Name	Association	Notes
	<b>Source:</b> manualProcess: Nurse Assigns ICU bed Location. <b>Target:</b> Estimated Time of Arrival in ICU.	
	<b>Source:</b> Estimated Time of Arrival in ICU. <b>Target:</b> manualProcess: Patient in Transport.	

## getPhysData(patientID, vitals)

*Database:* <none>, *Stereotype:* «information», *Package:* OR to ICU As Is Workflow  
*Detail:* Created on 6/2/2011. Last modified on 7/27/2011.  
*Notes:* Document Patient Condition

### Connections

Name	Association	Notes
	<b>Source:</b> manualProcess: Hand-off Communications. <b>Target:</b> getPhysData(patientID, vitals).	
	<b>Source:</b> getPhysData(patientID, vitals). <b>Target:</b> setObservationData(ABG).	

## manualProcess: Nurse Assigns ICU bed Location

*Database:* <none>, *Stereotype:* «information», *Package:* OR to ICU As Is Workflow  
*Detail:* Created on 5/25/2011. Last modified on 8/17/2012.  
*Notes:*

### Connections

Name	Association	Notes
	<b>Source:</b> getISData(patientID); getOrders(patientID). <b>Target:</b> manualProcess: Nurse Assigns ICU bed Location.	
	<b>Source:</b> manualProcess: Nurse Assigns ICU bed Location. <b>Target:</b> Estimated Time of Arrival in ICU.	

## End Transfer

*Database:* <none>, *Stereotype:* «Activity», *Package:* OR to ICU As Is Workflow  
*Detail:* Created on 6/2/2011. Last modified on 6/2/2011.  
*Notes:*

### Connections

Name	Association	Notes
	<b>Source:</b> <anonymous>. <b>Target:</b> End Transfer.	
	<b>Source:</b> End Transfer. <b>Target:</b> Begin General Care.	
No	<b>Source:</b> X-ray Needed. <b>Target:</b> End Transfer.	

## Post Patient ICU Set-up

*Database:* <none>, *Stereotype:* «Activity», *Package:* OR to ICU As Is Workflow

*Detail:* Created on 6/2/2011. Last modified on 6/2/2011.

*Notes:*

## X-ray Procedure

*Database:* <none>, *Stereotype:* «BusinessProcess», *Package:* OR to ICU As Is Workflow

*Detail:* Created on 6/2/2011. Last modified on 6/2/2011.

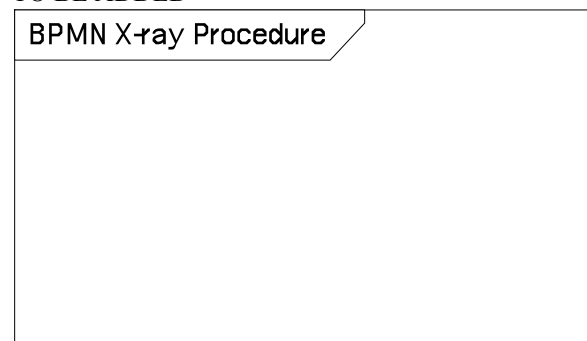
*Notes:*

### Connections

Name	Association	Notes
	<b>Source:</b> X-ray Procedure. <b>Target:</b> <anonymous>.	
No	<b>Source:</b> On Ventilator. <b>Target:</b> X-ray Procedure.	

### BPMN 1.1 diagram: X-ray Procedure

TO BE ADDED



## X-ray Vent Procedure

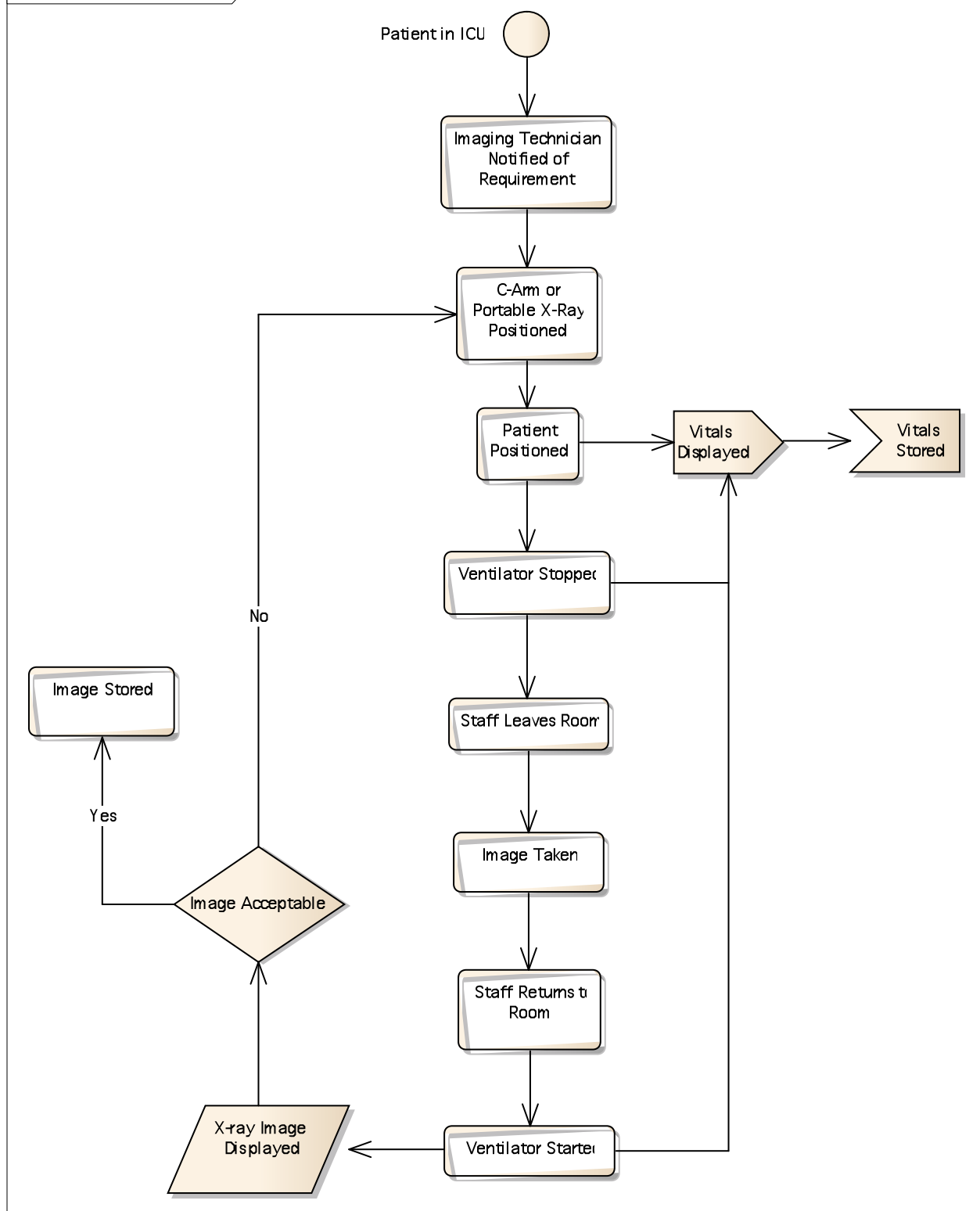
*Database:* <none>, *Stereotype:* «BusinessProcess», *Package:* OR to ICU As Is Workflow  
*Detail:* Created on 6/2/2011. Last modified on 6/2/2011.  
*Notes:*

**Connections**

Name	Association	Notes
	<b>Source:</b> X-ray Vent Procedure. <b>Target:</b> <anonymous>.	
Yes	<b>Source:</b> On Ventilator. <b>Target:</b> X-ray Vent Procedure.	

**BPMN 1.1 diagram: X-ray Vent Procedure**

BPMN X-ray Vent Procedure



## C-Arm or Portable X-Ray Positioned

*Database:* <none>, *Stereotype:* «Activity», *Package:* OR to ICU As Is Workflow

*Detail:* Created on 6/2/2011. Last modified on 6/2/2011.

*Notes:*

### Connections

Name	Association	Notes
	<b>Source:</b> Imaging Technician Notified of Requirement. <b>Target:</b> C-Arm or Portable X-Ray Positioned.	
	<b>Source:</b> C-Arm or Portable X-Ray Positioned. <b>Target:</b> Patient Positioned.	
No	<b>Source:</b> Image Acceptable. <b>Target:</b> C-Arm or Portable X-Ray Positioned.	

## Image Stored

*Database:* <none>, *Stereotype:* «Activity», *Package:* OR to ICU As Is Workflow

*Detail:* Created on 6/2/2011. Last modified on 6/2/2011.

*Notes:*

### Connections

Name	Association	Notes
Yes	<b>Source:</b> Image Acceptable. <b>Target:</b> Image Stored.	

## Image Taken

*Database:* <none>, *Stereotype:* «Activity», *Package:* OR to ICU As Is Workflow

*Detail:* Created on 6/2/2011. Last modified on 6/2/2011.

*Notes:*

### Connections

Name	Association	Notes
	<b>Source:</b> Staff Leaves Room. <b>Target:</b> Image Taken.	
	<b>Source:</b> Image Taken. <b>Target:</b> Staff Returns to Room.	

## Imaging Technician Notified of Requirement

*Database:* <none>, *Stereotype:* «Activity», *Package:* OR to ICU As Is Workflow

*Detail:* Created on 6/2/2011. Last modified on 6/2/2011.

*Notes:*

### Connections

Name	Association	Notes
	<b>Source:</b> Patient in ICU. <b>Target:</b> Imaging Technician Notified of Requirement.	
	<b>Source:</b> Imaging Technician Notified of Requirement. <b>Target:</b> C-Arm or Portable X-Ray Positioned.	

## Patient Positioned

Database: <none>, Stereotype: «Activity», Package: OR to ICU As Is Workflow

Detail: Created on 6/2/2011. Last modified on 6/2/2011.

Notes:

### Connections

Name	Association	Notes
	<b>Source:</b> C-Arm or Portable X-Ray Positioned. <b>Target:</b> Patient Positioned.	
	<b>Source:</b> Patient Positioned. <b>Target:</b> Vitals Displayed.	
	<b>Source:</b> Patient Positioned. <b>Target:</b> Ventilator Stopped.	

## Staff Leaves Room

Database: <none>, Stereotype: «Activity», Package: OR to ICU As Is Workflow

Detail: Created on 6/2/2011. Last modified on 6/2/2011.

Notes:

### Connections

Name	Association	Notes
	<b>Source:</b> Ventilator Stopped. <b>Target:</b> Staff Leaves Room.	
	<b>Source:</b> Staff Leaves Room. <b>Target:</b> Image Taken.	

## Staff Returns to Room

Database: <none>, Stereotype: «Activity», Package: OR to ICU As Is Workflow

Detail: Created on 6/2/2011. Last modified on 6/2/2011.

Notes:

### Connections



Name	Association	Notes
	<b>Source:</b> Image Taken. <b>Target:</b> Staff Returns to Room.	
	<b>Source:</b> Staff Returns to Room. <b>Target:</b> Ventilator Started.	

## Ventilator Started

Database: <none>, Stereotype: «Activity», Package: OR to ICU As Is Workflow

Detail: Created on 6/2/2011. Last modified on 6/2/2011.

Notes:

### Connections

Name	Association	Notes
	<b>Source:</b> Staff Returns to Room. <b>Target:</b> Ventilator Started.	
	<b>Source:</b> Ventilator Started. <b>Target:</b> X-ray Image Displayed.	
	<b>Source:</b> Ventilator Started. <b>Target:</b> Vitals Displayed.	

## Ventilator Stopped

Database: <none>, Stereotype: «Activity», Package: OR to ICU As Is Workflow

Detail: Created on 6/2/2011. Last modified on 6/2/2011.

Notes:

### Connections

Name	Association	Notes
	<b>Source:</b> Patient Positioned. <b>Target:</b> Ventilator Stopped.	
	<b>Source:</b> Ventilator Stopped. <b>Target:</b> Staff Leaves Room.	
	<b>Source:</b> Ventilator Stopped. <b>Target:</b> Vitals Displayed.	

## Image Acceptable

Database: <none>, Stereotype: , Package: OR to ICU As Is Workflow

Detail: Created on 6/2/2011. Last modified on 6/2/2011.

Notes:

Connections

Name	Association	Notes
	<b>Source:</b> X-ray Image Displayed. <b>Target:</b> Image Acceptable.	
No	<b>Source:</b> Image Acceptable. <b>Target:</b> C-Arm or Portable X-Ray Positioned.	
Yes	<b>Source:</b> Image Acceptable. <b>Target:</b> Image Stored.	

## X-ray Image Displayed

Database: <none>, Stereotype: «information», Package: OR to ICU As Is Workflow

Detail: Created on 6/2/2011. Last modified on 6/2/2011.

Notes:

Connections

Name	Association	Notes
	<b>Source:</b> Ventilator Started. <b>Target:</b> X-ray Image Displayed.	
	<b>Source:</b> X-ray Image Displayed. <b>Target:</b> Image Acceptable.	

## Patient in ICU

Database: <none>, Stereotype: «StartEvent», Package: OR to ICU As Is Workflow

Detail: Created on 6/2/2011. Last modified on 6/2/2011.

Notes:

Connections

Name	Association	Notes
	<b>Source:</b> Patient in ICU. <b>Target:</b> Imaging Technician Notified of Requirement.	

## Vitals Displayed

Database: <none>, Stereotype: , Package: OR to ICU As Is Workflow

Detail: Created on 6/2/2011. Last modified on 6/2/2011.

Notes:

Connections

Name	Association	Notes
	<b>Source:</b>	

Name	Association	Notes
	Patient Positioned. <b>Target:</b> Vitals Displayed.	
	<b>Source:</b> Vitals Displayed. <b>Target:</b> Vitals Stored.	
	<b>Source:</b> Ventilator Started. <b>Target:</b> Vitals Displayed.	
	<b>Source:</b> Ventilator Stopped. <b>Target:</b> Vitals Displayed.	

## Vitals Stored

*Database:* <none>, *Stereotype:* , *Package:* OR to ICU As Is Workflow

*Detail:* Created on 6/2/2011. Last modified on 6/2/2011.

*Notes:*

### Connections

Name	Association	Notes
	<b>Source:</b> Vitals Displayed. <b>Target:</b> Vitals Stored.	

## getISData(patientID, history)

*Database:* <none>, *Stereotype:* «BusinessProcess», *Package:* OR to ICU As Is Workflow

*Detail:* Created on 5/25/2011. Last modified on 7/27/2011.

*Notes:* Retrieve Patient History

### Data Attributes

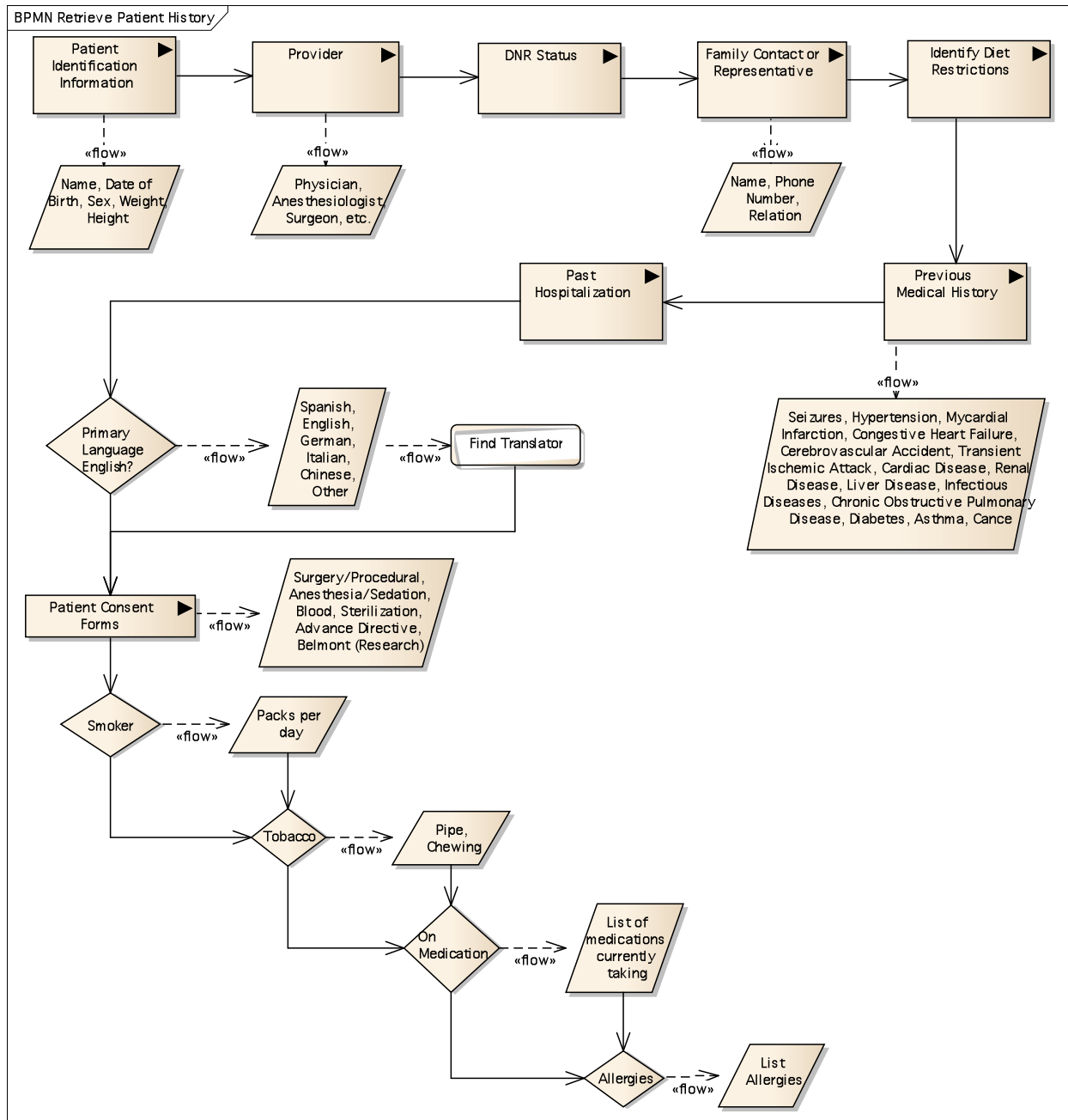
Name	Type	Notes
Allergies	String	
Anesthesiologist	String	
Consent Forms - Advance Directive	String	
Consent Forms - Anesthesia/Sedation	String	
Consent Forms - Belmont (Research)	String	
Consent Forms - Blood	String	
Consent Forms - Sterilization	String	
Consent Forms - Surgery/Procedural	String	
Contact Name	String	
Contact Phone Number	String	
Contact Relationship to Patient	String	
Current Medications	String	
Diet Restrictions	String	
DNR Status	String	
Language	String	

Past Hospitalization - Date	String	
Past Hospitalization - Outcome	String	
Past Hospitalization - Reason/ Procedure	String	
Patient Date of Birth	String	
Patient Height	Integer	
Patient Medical History	String	
Patient Name	String	
Patient Sex	String	
Patient Weight	Integer	
Physician	String	
Smoke - Packs per Day	Integer	
Surgeon	String	
Tobacco - Chewing	String	
Tobacco - Pipe	String	
Translator Required	String	

### Connections

Name	Association	Notes
	<b>Source:</b> manualProcess: Transfer patient to ICU. <b>Target:</b> getISData(patientID, history).	
	<b>Source:</b> getISData(patientID, history). <b>Target:</b> setObservationData(IVLines).	
	<b>Source:</b> Patient in OR. <b>Target:</b> getISData(patientID, history).	
	<b>Source:</b> OR Nurse. <b>Target:</b> getISData(patientID, history).	

### **BPMN 1.1 diagram: Retrieve Patient History**



## Find Translator

**Database:** <none>, **Stereotype:** «Activity», **Package:** OR to ICU As Is Workflow

**Detail:** Created on 5/25/2011. Last modified on 5/25/2011.

**Notes:**

### Connections

Name	Association	Notes
	<b>Source:</b> Find Translator.	

Name	Association	Notes
	<b>Target:</b> Patient Consent Forms.	
	<b>Source:</b> Spanish, English, German, Italian, Chinese, Other. <b>Target:</b> Find Translator.	

## Allergies

Database: <none>, *Stereotype:* , *Package:* OR to ICU As Is Workflow

Detail: Created on 5/25/2011. Last modified on 5/25/2011.

Notes:

### Connections

Name	Association	Notes
	<b>Source:</b> List of medications currently taking. <b>Target:</b> Allergies.	
	<b>Source:</b> On Medication. <b>Target:</b> Allergies.	
	<b>Source:</b> Allergies. <b>Target:</b> List Allergies.	

## On Medication

Database: <none>, *Stereotype:* , *Package:* OR to ICU As Is Workflow

Detail: Created on 5/25/2011. Last modified on 5/25/2011.

Notes:

### Connections

Name	Association	Notes
	<b>Source:</b> Pipe, Chewing. <b>Target:</b> On Medication.	
	<b>Source:</b> Tobacco. <b>Target:</b> On Medication.	
	<b>Source:</b> On Medication. <b>Target:</b> Allergies.	
	<b>Source:</b> On Medication. <b>Target:</b> List of medications currently taking.	

## Primary Language English?

Database: <none>, *Stereotype:* , *Package:* OR to ICU As Is Workflow  
Detail: Created on 5/25/2011. Last modified on 5/25/2011.  
Notes:

#### Connections

Name	Association	Notes
	<b>Source:</b> Past Hospitalization. <b>Target:</b> Primary Language English?.	
	<b>Source:</b> Primary Language English?. <b>Target:</b> Patient Consent Forms.	
	<b>Source:</b> Primary Language English?. <b>Target:</b> Spanish, English, German, Italian, Chinese, Other.	

## Smoker

Database: <none>, *Stereotype:* , *Package:* OR to ICU As Is Workflow  
Detail: Created on 5/25/2011. Last modified on 5/25/2011.  
Notes:

#### Connections

Name	Association	Notes
	<b>Source:</b> Patient Consent Forms. <b>Target:</b> Smoker.	
	<b>Source:</b> Smoker. <b>Target:</b> Tobacco.	
	<b>Source:</b> Smoker. <b>Target:</b> Packs per day.	

## Tobacco

Database: <none>, *Stereotype:* , *Package:* OR to ICU As Is Workflow  
Detail: Created on 5/25/2011. Last modified on 5/25/2011.  
Notes:

#### Connections

Name	Association	Notes
	<b>Source:</b> Packs per day. <b>Target:</b> Tobacco.	
	<b>Source:</b> Tobacco. <b>Target:</b> On Medication.	

Name	Association	Notes
	<b>Source:</b> Smoker. <b>Target:</b> Tobacco.	
	<b>Source:</b> Tobacco. <b>Target:</b> Pipe, Chewing.	

## List Allergies

*Database:* <none>, *Stereotype:* «information», *Package:* OR to ICU As Is Workflow

*Detail:* Created on 5/25/2011. Last modified on 5/25/2011.

*Notes:*

### Connections

Name	Association	Notes
	<b>Source:</b> Allergies. <b>Target:</b> List Allergies.	

## List of medications currently taking

*Database:* <none>, *Stereotype:* «information», *Package:* OR to ICU As Is Workflow

*Detail:* Created on 5/25/2011. Last modified on 5/25/2011.

*Notes:*

### Connections

Name	Association	Notes
	<b>Source:</b> List of medications currently taking. <b>Target:</b> Allergies.	
	<b>Source:</b> On Medication. <b>Target:</b> List of medications currently taking.	

## Name, Date of Birth, Sex, Weight, Height

*Database:* <none>, *Stereotype:* «information», *Package:* OR to ICU As Is Workflow

*Detail:* Created on 5/25/2011. Last modified on 5/25/2011.

*Notes:*

### Connections

Name	Association	Notes
	<b>Source:</b> Patient Identification Information. <b>Target:</b> Name, Date of Birth, Sex, Weight, Height.	

## Name, Phone Number, Relation

*Database:* <none>, *Stereotype:* «information», *Package:* OR to ICU As Is Workflow

*Detail:* Created on 2/8/2012. Last modified on 2/8/2012.



Notes:

#### Connections

Name	Association	Notes
	<b>Source:</b> Family Contact or Representative. <b>Target:</b> Name, Phone Number, Relation.	

## Packs per day

Database: <none>, *Stereotype:* «information», *Package:* OR to ICU As Is Workflow

Detail: Created on 5/25/2011. Last modified on 5/25/2011.

Notes:

#### Connections

Name	Association	Notes
	<b>Source:</b> Packs per day. <b>Target:</b> Tobacco.	
	<b>Source:</b> Smoker. <b>Target:</b> Packs per day.	

## Physician, Anesthesiologist, Surgeon, etc.

Database: <none>, *Stereotype:* «information», *Package:* OR to ICU As Is Workflow

Detail: Created on 2/8/2012. Last modified on 2/8/2012.

Notes:

#### Connections

Name	Association	Notes
	<b>Source:</b> Provider. <b>Target:</b> Physician, Anesthesiologist, Surgeon, etc. .	

## Pipe, Chewing

Database: <none>, *Stereotype:* «information», *Package:* OR to ICU As Is Workflow

Detail: Created on 5/25/2011. Last modified on 5/25/2011.

Notes:

#### Connections

Name	Association	Notes
	<b>Source:</b> Pipe, Chewing. <b>Target:</b> On Medication.	
	<b>Source:</b> Tobacco. <b>Target:</b> Pipe, Chewing.	

## Seizures, Hypertension, Mycardial Infarction, Congestive Heart Failure, Cerebrovascular Accident, Transient Ischemic Attack, Cardiac Disease, Renal Disease, Liver Disease, Infectious Diseases, Chronic Obstructive Pulmonary Disease, Diabetes, Asthma, Cance

Database: <none>, Stereotype: «information», Package: OR to ICU As Is Workflow

Detail: Created on 5/25/2011. Last modified on 5/25/2011.

Notes:

### Connections

Name	Association	Notes
	<b>Source:</b> Previous Medical History. <b>Target:</b> Seizures, Hypertension, Mycardial Infarction, Congestive Heart Failure, Cerebrovascular Accident, Transient Ischemic Attack, Cardiac Disease, Renal Disease, Liver Disease, Infectious Diseases, Chronic Obstructive Pulmonary Disease, Diabetes, Asthma, Cance.	

## Spanish, English, German, Italian, Chinese, Other

Database: <none>, Stereotype: «information», Package: OR to ICU As Is Workflow

Detail: Created on 5/25/2011. Last modified on 5/25/2011.

Notes:

### Connections

Name	Association	Notes
	<b>Source:</b> Primary Language English?. <b>Target:</b> Spanish, English, German, Italian, Chinese, Other.	
	<b>Source:</b> Spanish, English, German, Italian, Chinese, Other. <b>Target:</b> Find Translator.	

## Surgery/Procedural, Anesthesia/Sedation, Blood, Sterilization, Advance Directive, Belmont (Research)

Database: <none>, Stereotype: «information», Package: OR to ICU As Is Workflow

Detail: Created on 5/25/2011. Last modified on 5/25/2011.

Notes:

### Connections

Name	Association	Notes
	<b>Source:</b> Patient Consent Forms. <b>Target:</b> Surgery/Procedural, Anesthesia/Sedation, Blood, Sterilization, Advance Directive, Belmont (Research).	

## manualProcess: Clinical Examination

Database: <none>, Stereotype: «Activity», Package: OR to ICU As Is Workflow

*Detail:* Created on 6/2/2011. Last modified on 8/17/2012.  
*Notes:*

#### Connections

Name	Association	Notes
	<b>Source:</b> manualProcess: Ensure Lines and Cables are Properly Labeled. <b>Target:</b> manualProcess: Clinical Examination.	
	<b>Source:</b> manualProcess: Clinical Examination. <b>Target:</b> setOrders(patientID).	
	<b>Source:</b> manualProcess: Clinical Examination. <b>Target:</b> X-ray Needed.	

### manualProcess: Complete Communications Sheet

*Database:* <none>, *Stereotype:* «Activity», *Package:* OR to ICU As Is Workflow  
*Detail:* Created on 5/25/2011. Last modified on 8/17/2012.  
*Notes:*

#### Connections

Name	Association	Notes
	<b>Source:</b> setISData(patientID, transfer, time, fromLocation, toLocation). <b>Target:</b> manualProcess: Complete Communications Sheet.	

### manualProcess: Ensure Lines and Cables are Properly Labeled

*Database:* <none>, *Stereotype:* «Activity», *Package:* OR to ICU As Is Workflow  
*Detail:* Created on 6/2/2011. Last modified on 8/17/2012.  
*Notes:*

#### Connections

Name	Association	Notes
	<b>Source:</b> manualProcess: Untangle lines and cables. <b>Target:</b> manualProcess: Ensure Lines and Cables are Properly Labeled.	
	<b>Source:</b> manualProcess: Ensure Lines and Cables are Properly Labeled. <b>Target:</b> manualProcess: Clinical Examination.	

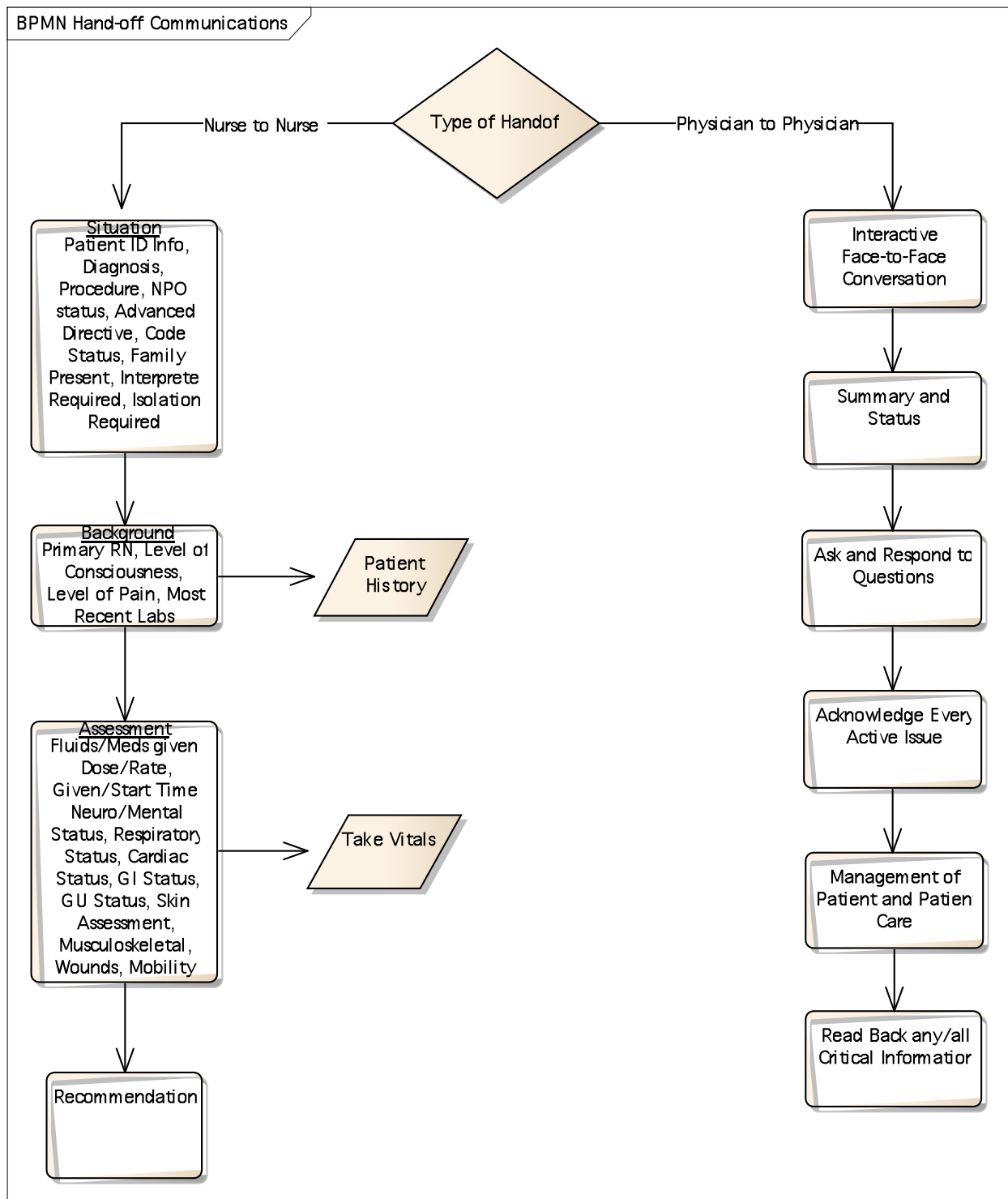
### manualProcess: Hand-off Communications

*Database:* <none>, *Stereotype:* «BusinessProcess», *Package:* OR to ICU As Is Workflow  
*Detail:* Created on 6/2/2011. Last modified on 8/17/2012.  
*Notes:*

### Connections

Name	Association	Notes
	<b>Source:</b> manualProcess: Post Patient ICU Set-up. <b>Target:</b> manualProcess: Hand-off Communications.	
	<b>Source:</b> manualProcess: Hand-off Communications. <b>Target:</b> getPhysData(patientID, vitals).	

**BPMN 1.1 diagram: Hand-off Communications**



## Acknowledge Every Active Issue

*Database:* <none>, *Stereotype:* «Activity», *Package:* OR to ICU As Is Workflow

*Detail:* Created on 6/2/2011. Last modified on 6/2/2011.

*Notes:*

### Connections

Name	Association	Notes
	<b>Source:</b> Ask and Respond to Questions. <b>Target:</b> Acknowledge Every Active Issue.	
	<b>Source:</b> Acknowledge Every Active Issue. <b>Target:</b> Management of Patient and Patient Care.	

## Ask and Respond to Questions

*Database:* <none>, *Stereotype:* «Activity», *Package:* OR to ICU As Is Workflow

*Detail:* Created on 6/2/2011. Last modified on 6/2/2011.

*Notes:*

### Connections

Name	Association	Notes
	<b>Source:</b> Summary and Status. <b>Target:</b> Ask and Respond to Questions.	
	<b>Source:</b> Ask and Respond to Questions. <b>Target:</b> Acknowledge Every Active Issue.	

## Fluids/Meds given, Dose/Rate, Given/Start Time, Neuro/Mental Status, Respiratory Status, Cardiac Status, GI Status, GU Status, Skin Assessment, Musculoskeletal, Wounds, Mobility

*Database:* <none>, *Stereotype:* «Activity», *Package:* OR to ICU As Is Workflow

*Detail:* Created on 6/2/2011. Last modified on 6/2/2011.

*Notes:*

### Data Attributes

Name	Type	Notes
Cardiac Status	String	
Dose/ Rate	String	
Fluids/ Meds Given	String	
GI Status	String	
Given/ Start Time	String	
GU Status	String	
Mobility	String	
Musculoskeletal	String	
Neuro/ Mental Status	String	
Respiratory Status	String	
Skin Assessment	String	
Take Vitals	UnlimitedNatural	
Wounds	String	

### Connections

Name	Association	Notes
	<b>Source:</b>	

Name	Association	Notes
	Fluids/Meds given, Dose/Rate, Given/Start Time, Neuro/Mental Status, Respiratory Status, Cardiac Status, GI Status, GU Status, Skin Assessment, Musculoskeletal, Wounds, Mobility. <b>Target:</b> Recommendation.	
	<b>Source:</b> Fluids/Meds given, Dose/Rate, Given/Start Time, Neuro/Mental Status, Respiratory Status, Cardiac Status, GI Status, GU Status, Skin Assessment, Musculoskeletal, Wounds, Mobility. <b>Target:</b> Take Vitals.	
	<b>Source:</b> Primary RN, Level of Consciousness, Level of Pain, Most Recent Labs. <b>Target:</b> Fluids/Meds given, Dose/Rate, Given/Start Time, Neuro/Mental Status, Respiratory Status, Cardiac Status, GI Status, GU Status, Skin Assessment, Musculoskeletal, Wounds, Mobility.	
	<b>Source:</b> Fluids/Meds given, Dose/Rate, Given/Start Time, Neuro/Mental Status, Respiratory Status, Cardiac Status, GI Status, GU Status, Skin Assessment, Musculoskeletal, Wounds, Mobility. <b>Target:</b> Take Vitals.	

## Interactive Face-to-Face Conversation

*Database:* <none>, *Stereotype:* «Activity», *Package:* OR to ICU As Is Workflow

*Detail:* Created on 6/2/2011. Last modified on 6/2/2011.

*Notes:*

### Connections

Name	Association	Notes
	<b>Source:</b> Interactive Face-to-Face Conversation. <b>Target:</b> Summary and Status.	
Physician to Physician	<b>Source:</b> Type of Handoff. <b>Target:</b> Interactive Face-to-Face Conversation.	

## Management of Patient and Patient Care

*Database:* <none>, *Stereotype:* «Activity», *Package:* OR to ICU As Is Workflow

*Detail:* Created on 6/2/2011. Last modified on 6/2/2011.

*Notes:*

### Data Attributes

Name	Type	Notes
clinicalDecisionSupport	String	

### Connections

Name	Association	Notes
	<b>Source:</b> Acknowledge Every Active Issue. <b>Target:</b> Management of Patient and Patient Care.	
	<b>Source:</b> Management of Patient and Patient Care. <b>Target:</b> Read Back any/all Critical Information.	

## Patient ID Info, Diagnosis, Procedure, NPO status, Advanced Directive, Code Status, Family Present, Interpreter Required, Isolation Required

*Database:* <none>, *Stereotype:* «Activity», *Package:* OR to ICU As Is Workflow

*Detail:* Created on 6/2/2011. Last modified on 6/2/2011.

*Notes:*

### Data Attributes

Name	Type	Notes
Advanced Directive	String	
Code Status	String	
Diagnosis	String	
Family Present	String	
Interpreter Required	String	
NPO Status	String	
Patient ID Info	String	
Procedure	String	

### Connections

Name	Association	Notes
	<b>Source:</b> Patient ID Info, Diagnosis, Procedure, NPO status, Advanced Directive, Code Status, Family Present, Interpreter Required, Isolation Required. <b>Target:</b> Primary RN, Level of Consciousness, Level of Pain, Most Recent Labs.	

## Primary RN, Level of Consciousness, Level of Pain, Most Recent Labs

*Database:* <none>, *Stereotype:* «Activity», *Package:* OR to ICU As Is Workflow

*Detail:* Created on 6/2/2011. Last modified on 6/2/2011.

*Notes:*

### Data Attributes

Name	Type	Notes
Most Recent Labs	String	
Patient History	String	
Patient Level of Pain	Integer	
Patient LOC	String	
Primary RN	String	

### Connections

Name	Association	Notes
	<b>Source:</b>	



Name	Association	Notes
	Patient ID Info, Diagnosis, Procedure, NPO status, Advanced Directive, Code Status, Family Present, Interpreter Required, Isolation Required. <b>Target:</b> Primary RN, Level of Consciousness, Level of Pain, Most Recent Labs.	
	<b>Source:</b> Primary RN, Level of Consciousness, Level of Pain, Most Recent Labs. <b>Target:</b> Patient History.	
	<b>Source:</b> Primary RN, Level of Consciousness, Level of Pain, Most Recent Labs. <b>Target:</b> Fluids/Meds given, Dose/Rate, Given/Start Time, Neuro/Mental Status, Respiratory Status, Cardiac Status, GI Status, GU Status, Skin Assessment, Musculoskeletal, Wounds, Mobility.	
	<b>Source:</b> Primary RN, Level of Consciousness, Level of Pain, Most Recent Labs. <b>Target:</b> Patient History.	

## Read Back any/all Critical Information

*Database:* <none>, *Stereotype:* «Activity», *Package:* OR to ICU As Is Workflow

*Detail:* Created on 6/2/2011. Last modified on 6/2/2011.

*Notes:*

### Connections

Name	Association	Notes
	<b>Source:</b> Management of Patient and Patient Care. <b>Target:</b> Read Back any/all Critical Information.	

## Recommendation

*Database:* <none>, *Stereotype:* «Activity», *Package:* OR to ICU As Is Workflow

*Detail:* Created on 6/2/2011. Last modified on 6/2/2011.

*Notes:*

### Data Attributes

Name	Type	Notes
Recommendation	String	

### Connections

Name	Association	Notes
	<b>Source:</b> Fluids/Meds given, Dose/Rate, Given/Start Time, Neuro/Mental Status, Respiratory Status, Cardiac Status, GI Status, GU Status, Skin Assessment, Musculoskeletal, Wounds, Mobility. <b>Target:</b>	

Name	Association	Notes
	Recommendation.	

## Summary and Status

*Database:* <none>, *Stereotype:* «Activity», *Package:* OR to ICU As Is Workflow

*Detail:* Created on 6/2/2011. Last modified on 6/2/2011.

*Notes:*

### Data Attributes

Name	Type	Notes
Patient Status	String	
Patient Summary	String	

### Connections

Name	Association	Notes
	<b>Source:</b> Interactive Face-to-Face Conversation. <b>Target:</b> Summary and Status.	
	<b>Source:</b> Summary and Status. <b>Target:</b> Ask and Respond to Questions.	

## Type of Handoff

*Database:* <none>, *Stereotype:* «Gateway», *Package:* OR to ICU As Is Workflow

*Detail:* Created on 6/2/2011. Last modified on 6/2/2011.

*Notes:*

### Connections

Name	Association	Notes
Nurse to Nurse	<b>Source:</b> Type of Handoff. <b>Target:</b> <anonymous>.	
Physician to Physician	<b>Source:</b> Type of Handoff. <b>Target:</b> Interactive Face-to-Face Conversation.	

## Patient History

*Database:* <none>, *Stereotype:* «information», *Package:* OR to ICU As Is Workflow

*Detail:* Created on 6/2/2011. Last modified on 6/2/2011.

*Notes:*

### Connections

Name	Association	Notes
	<b>Source:</b> Primary RN, Level of Consciousness, Level of Pain, Most Recent Labs. <b>Target:</b> Patient History.	

## Take Vitals

Database: <none>, Stereotype: «information», Package: OR to ICU As Is Workflow

Detail: Created on 6/2/2011. Last modified on 6/2/2011.

Notes:

### Connections

Name	Association	Notes
	<b>Source:</b> Fluids/Meds given, Dose/Rate, Given/Start Time, Neuro/Mental Status, Respiratory Status, Cardiac Status, GI Status, GU Status, Skin Assessment, Musculoskeletal, Wounds, Mobility. <b>Target:</b> Take Vitals.	

## manualProcess: Patient in Transport

Database: <none>, Stereotype: «BusinessProcess», Package: OR to ICU As Is Workflow

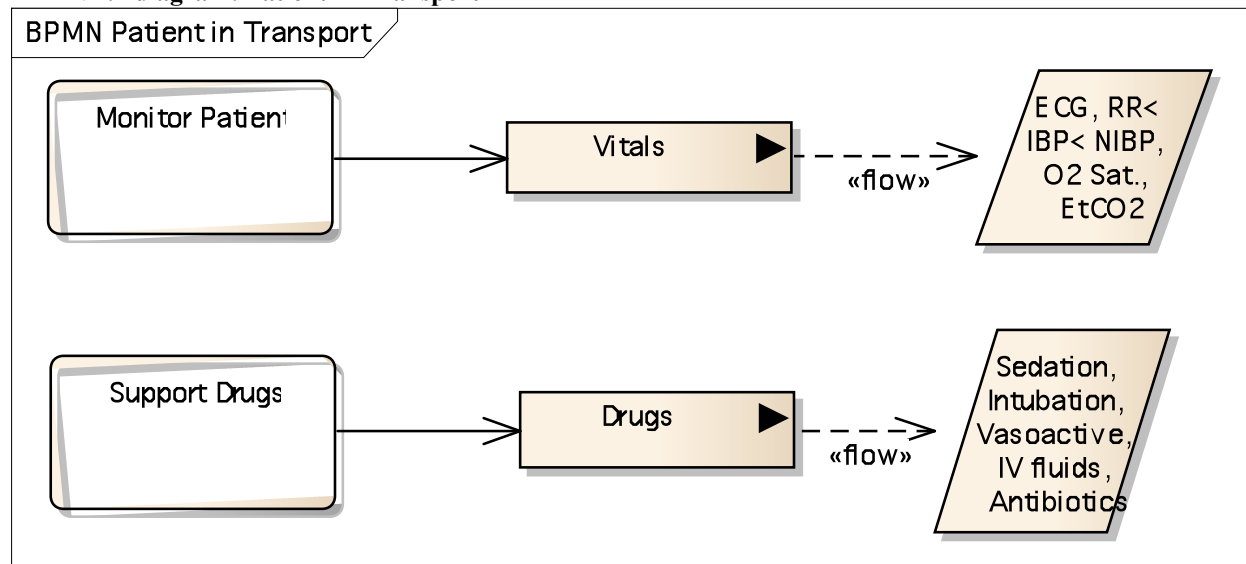
Detail: Created on 5/25/2011. Last modified on 8/17/2012.

Notes:

### Connections

Name	Association	Notes
	<b>Source:</b> Estimated Time of Arrival in ICU. <b>Target:</b> manualProcess: Patient in Transport.	
	<b>Source:</b> manualProcess: Patient in Transport. <b>Target:</b> Patient in ICU.	

### BPMN 1.1 diagram: Patient in Transport



## Monitor Patient

Database: <none>, Stereotype: «Activity», Package: OR to ICU As Is Workflow

Detail: Created on 5/25/2011. Last modified on 5/25/2011.

Notes:

### Data Attributes

Name	Type	Notes
Blood Pressure	Integer	
ECG		
EtCO2	Integer	
Respiratory Rate	Integer	
SpO2	Integer	

### Connections

Name	Association	Notes
	<b>Source:</b> Monitor Patient. <b>Target:</b> Vitals.	
	<b>Source:</b> Monitor Patient. <b>Target:</b> Vitals.	

## Support Drugs

Database: <none>, Stereotype: «Activity», Package: OR to ICU As Is Workflow

Detail: Created on 5/25/2011. Last modified on 5/25/2011.

Notes:

### Data Attributes

Name	Type	Notes
medicationList	String	

### Connections

Name	Association	Notes
	<b>Source:</b> Support Drugs. <b>Target:</b> Drugs.	
	<b>Source:</b> Support Drugs. <b>Target:</b> Drugs.	

## ECG, RR< IBP< NIBP, O2 Sat., EtCO2

Database: <none>, Stereotype: «information», Package: OR to ICU As Is Workflow

Detail: Created on 5/25/2011. Last modified on 5/25/2011.

Notes:

### Connections

Name	Association	Notes
	<b>Source:</b> Vitals. <b>Target:</b> ECG, RR< IBP< NIBP, O2 Sat., EtCO2.	

Name	Association	Notes
	<b>Source:</b> Vitals. <b>Target:</b> ECG, RR< IBP< NIBP, O2 Sat., EtCO2.	

## Sedation, Intubation, Vasoactive, IV fluids, Antibiotics

*Database:* <none>, *Stereotype:* «information», *Package:* OR to ICU As Is Workflow

*Detail:* Created on 5/25/2011. Last modified on 5/25/2011.

*Notes:*

### Connections

Name	Association	Notes
	<b>Source:</b> Drugs. <b>Target:</b> Sedation, Intubation, Vasoactive, IV fluids, Antibiotics.	
	<b>Source:</b> Drugs. <b>Target:</b> Sedation, Intubation, Vasoactive, IV fluids, Antibiotics.	

## manualProcess: Post Patient ICU Set-up

*Database:* <none>, *Stereotype:* «BusinessProcess», *Package:* OR to ICU As Is Workflow

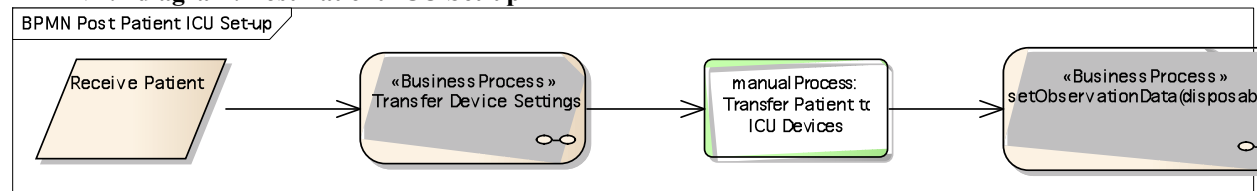
*Detail:* Created on 6/2/2011. Last modified on 8/17/2012.

*Notes:*

### Connections

Name	Association	Notes
	<b>Source:</b> Patient in ICU. <b>Target:</b> manualProcess: Post Patient ICU Set-up.	
	<b>Source:</b> manualProcess: Post Patient ICU Set-up. <b>Target:</b> manualProcess: Hand-off Communications.	

### BPMN 1.1 diagram: Post Patient ICU Set-up



## manualProcess: Transfer Patient to ICU Devices

*Database:* <none>, *Stereotype:* «Activity», *Package:* OR to ICU As Is Workflow

*Detail:* Created on 6/2/2011. Last modified on 8/17/2012.

*Notes:*

### Connections

Name	Association	Notes
	<b>Source:</b> Transfer Device Settings. <b>Target:</b> manualProcess: Transfer Patient to ICU Devices.	
	<b>Source:</b> manualProcess: Transfer Patient to ICU Devices. <b>Target:</b> setObservationData(disposables).	
	<b>Source:</b> Receive Patient. <b>Target:</b> manualProcess: Transfer Patient to ICU Devices.	
	<b>Source:</b> manualProcess: Transfer Patient to ICU Devices. <b>Target:</b> setObservationData(disposables).	

## Transfer Device Settings

*Database:* <none>, *Stereotype:* «BusinessProcess», *Package:* OR to ICU As Is Workflow

*Detail:* Created on 6/2/2011. Last modified on 6/2/2011.

*Notes:*

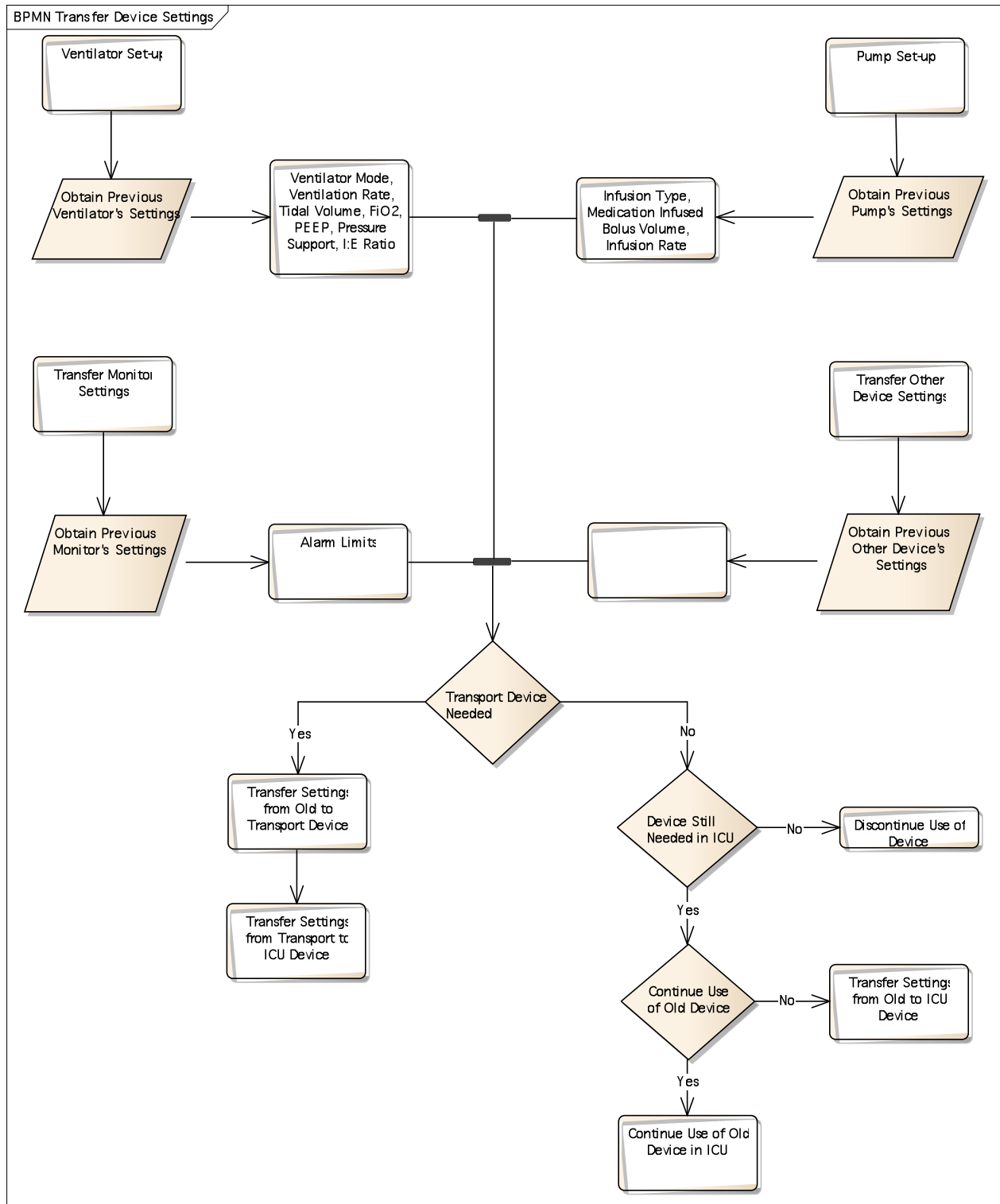
### Data Attributes

Name	Type	Notes
Continue use of old device in ICU	Boolean	
Infusion Pump, Bolus Volume	Integer	
Infusion Pump, Infusion Rate	String	
Infusion Pump, Medication Infused	String	
Infusion Pump, Type	String	
Set Monitor Alarm Limits	String	
Ventillator, FiO2	Integer	
Ventillator, I:E Ratio	String	
Ventillator, Mode	String	
Ventillator, PEEP	String	
Ventillator, Pressure Support	String	
Ventillator, Rate	String	
Ventillator, Tidal Volume	Integer	

### Connections

Name	Association	Notes
	<b>Source:</b> Receive Patient. <b>Target:</b> Transfer Device Settings.	
	<b>Source:</b> Transfer Device Settings. <b>Target:</b> manualProcess: Transfer Patient to ICU Devices.	

**BPMN 1.1 diagram: Transfer Device Settings**



<anonymous>

Database: <none>, Stereotype: «Activity», Package: OR to ICU As Is Workflow

Detail: Created on 6/2/2011. Last modified on 6/2/2011.

Notes:

Connections

Name	Association	Notes
	<b>Source:</b> Obtain Previous Other Device's Settings. <b>Target:</b> <anonymous>.	
	<b>Source:</b> <anonymous>. <b>Target:</b> <anonymous>.	

## Alarm Limits

Database: <none>, *Stereotype:* «Activity», *Package:* OR to ICU As Is Workflow

Detail: Created on 6/2/2011. Last modified on 6/2/2011.

Notes:

Connections

Name	Association	Notes
	<b>Source:</b> Obtain Previous Monitor's Settings. <b>Target:</b> Alarm Limits.	
	<b>Source:</b> Alarm Limits. <b>Target:</b> <anonymous>.	

## Continue Use of Old Device in ICU

Database: <none>, *Stereotype:* «Activity», *Package:* OR to ICU As Is Workflow

Detail: Created on 6/2/2011. Last modified on 6/2/2011.

Notes:

Connections

Name	Association	Notes
Yes	<b>Source:</b> Continue Use of Old Device. <b>Target:</b> Continue Use of Old Device in ICU.	

## Discontinue Use of Device

Database: <none>, *Stereotype:* «Activity», *Package:* OR to ICU As Is Workflow

Detail: Created on 6/2/2011. Last modified on 6/2/2011.

Notes:

Connections

Name	Association	Notes
No	<b>Source:</b> Device Still Needed in ICU. <b>Target:</b> Discontinue Use of Device.	



## Infusion Type, Medication Infused, Bolus Volume, Infusion Rate

Database: <none>, *Stereotype*: «Activity», *Package*: OR to ICU As Is Workflow

Detail: Created on 6/2/2011. Last modified on 6/2/2011.

Notes:

### Connections

Name	Association	Notes
	<b>Source:</b> Obtain Previous Pump's Settings. <b>Target:</b> Infusion Type, Medication Infused, Bolus Volume, Infusion Rate.	
	<b>Source:</b> Infusion Type, Medication Infused, Bolus Volume, Infusion Rate. <b>Target:</b> <anonymous>.	

## Pump Set-up

Database: <none>, *Stereotype*: «Activity», *Package*: OR to ICU As Is Workflow

Detail: Created on 6/2/2011. Last modified on 6/2/2011.

Notes:

### Data Attributes

Name	Type	Notes
bolusVolume	Integer	
drug	String	
infusionRate	Integer	
infusionTime	Integer	
infusionType	String	

### Connections

Name	Association	Notes
	<b>Source:</b> Pump Set-up. <b>Target:</b> Obtain Previous Pump's Settings.	

## Transfer Monitor Settings

Database: <none>, *Stereotype*: «Activity», *Package*: OR to ICU As Is Workflow

Detail: Created on 6/2/2011. Last modified on 6/2/2011.

Notes:

### Data Attributes

Name	Type	Notes
alarmSettings	String	

### Connections

Name	Association	Notes
	<b>Source:</b> Transfer Monitor Settings. <b>Target:</b> Obtain Previous Monitor's Settings.	

## Transfer Other Device Settings

Database: <none>, *Stereotype*: «Activity», *Package*: OR to ICU As Is Workflow  
 Detail: Created on 6/2/2011. Last modified on 6/2/2011.  
 Notes:

#### Connections

Name	Association	Notes
	<b>Source:</b> Transfer Other Device Settings. <b>Target:</b> Obtain Previous Other Device's Settings.	

### **Transfer Settings from Old to ICU Device**

Database: <none>, *Stereotype*: «Activity», *Package*: OR to ICU As Is Workflow  
 Detail: Created on 6/2/2011. Last modified on 6/2/2011.  
 Notes:

#### Connections

Name	Association	Notes
No	<b>Source:</b> Continue Use of Old Device. <b>Target:</b> Transfer Settings from Old to ICU Device.	

### **Transfer Settings from Old to Transport Device**

Database: <none>, *Stereotype*: «Activity», *Package*: OR to ICU As Is Workflow  
 Detail: Created on 6/2/2011. Last modified on 6/2/2011.  
 Notes:

#### Connections

Name	Association	Notes
	<b>Source:</b> Transfer Settings from Old to Transport Device. <b>Target:</b> Transfer Settings from Transport to ICU Device.	
Yes	<b>Source:</b> Transport Device Needed. <b>Target:</b> Transfer Settings from Old to Transport Device.	

### **Transfer Settings from Transport to ICU Device**

Database: <none>, *Stereotype*: «Activity», *Package*: OR to ICU As Is Workflow  
 Detail: Created on 6/2/2011. Last modified on 6/2/2011.  
 Notes:

#### Connections

Name	Association	Notes
	<b>Source:</b> Transfer Settings from Old to Transport Device. <b>Target:</b> Transfer Settings from Transport to ICU Device.	

### **Ventilator Mode, Ventilation Rate, Tidal Volume, FiO2, PEEP, Pressure Support, I:E Ratio**

*Database:* <none>, *Stereotype:* «Activity», *Package:* OR to ICU As Is Workflow  
*Detail:* Created on 6/2/2011. Last modified on 6/2/2011.  
*Notes:*

#### Connections

Name	Association	Notes
	<b>Source:</b> Obtain Previous Ventilator's Settings. <b>Target:</b> Ventilator Mode, Ventilation Rate, Tidal Volume, FiO2, PEEP, Pressure Support, I:E Ratio.	
	<b>Source:</b> Ventilator Mode, Ventilation Rate, Tidal Volume, FiO2, PEEP, Pressure Support, I:E Ratio. <b>Target:</b> <anonymous>.	

## Ventilator Set-up

*Database:* <none>, *Stereotype:* «Activity», *Package:* OR to ICU As Is Workflow  
*Detail:* Created on 6/2/2011. Last modified on 6/2/2011.  
*Notes:*

#### Data Attributes

Name	Type	Notes
FiO2	Integer	
PEEP	String	
pressureSupport	String	
tidalVolume	Integer	
ventMode	String	
ventRate	Integer	

#### Connections

Name	Association	Notes
	<b>Source:</b> Ventilator Set-up. <b>Target:</b> Obtain Previous Ventilator's Settings.	

## Continue Use of Old Device

*Database:* <none>, *Stereotype:* «Gateway», *Package:* OR to ICU As Is Workflow  
*Detail:* Created on 6/2/2011. Last modified on 6/2/2011.  
*Notes:*

#### Connections

Name	Association	Notes
No	<b>Source:</b> Continue Use of Old Device. <b>Target:</b> Transfer Settings from Old to ICU Device.	
Yes	<b>Source:</b> Device Still Needed in ICU. <b>Target:</b> Continue Use of Old Device.	
Yes	<b>Source:</b> Continue Use of Old Device.	

Name	Association	Notes
	<b>Target:</b> Continue Use of Old Device in ICU.	

## Device Still Needed in ICU

Database: <none>, *Stereotype:* «Gateway», *Package:* OR to ICU As Is Workflow

Detail: Created on 6/2/2011. Last modified on 6/2/2011.

Notes:

### Connections

Name	Association	Notes
No	<b>Source:</b> Transport Device Needed. <b>Target:</b> Device Still Needed in ICU.	
No	<b>Source:</b> Device Still Needed in ICU. <b>Target:</b> Discontinue Use of Device.	
Yes	<b>Source:</b> Device Still Needed in ICU. <b>Target:</b> Continue Use of Old Device.	

## Transport Device Needed

Database: <none>, *Stereotype:* «Gateway», *Package:* OR to ICU As Is Workflow

Detail: Created on 6/2/2011. Last modified on 6/2/2011.

Notes:

### Connections

Name	Association	Notes
	<b>Source:</b> <anonymous>. <b>Target:</b> Transport Device Needed.	
No	<b>Source:</b> Transport Device Needed. <b>Target:</b> Device Still Needed in ICU.	
Yes	<b>Source:</b> Transport Device Needed. <b>Target:</b> Transfer Settings from Old to Transport Device.	

## Obtain Previous Monitor's Settings

Database: <none>, *Stereotype:* «information», *Package:* OR to ICU As Is Workflow

Detail: Created on 6/2/2011. Last modified on 6/2/2011.

Notes:

### Connections

Name	Association	Notes
	<b>Source:</b> Transfer Monitor Settings. <b>Target:</b>	

Name	Association	Notes
	Obtain Previous Monitor's Settings.	
	<b>Source:</b> Obtain Previous Monitor's Settings. <b>Target:</b> Alarm Limits.	

## Obtain Previous Other Device's Settings

*Database:* <none>, *Stereotype:* «information», *Package:* OR to ICU As Is Workflow

*Detail:* Created on 6/2/2011. Last modified on 6/2/2011.

*Notes:*

### Connections

Name	Association	Notes
	<b>Source:</b> Transfer Other Device Settings. <b>Target:</b> Obtain Previous Other Device's Settings.	
	<b>Source:</b> Obtain Previous Other Device's Settings. <b>Target:</b> <anonymous>.	

## Obtain Previous Pump's Settings

*Database:* <none>, *Stereotype:* «information», *Package:* OR to ICU As Is Workflow

*Detail:* Created on 6/2/2011. Last modified on 6/2/2011.

*Notes:*

### Connections

Name	Association	Notes
	<b>Source:</b> Pump Set-up. <b>Target:</b> Obtain Previous Pump's Settings.	
	<b>Source:</b> Obtain Previous Pump's Settings. <b>Target:</b> Infusion Type, Medication Infused, Bolus Volume, Infusion Rate.	

## Obtain Previous Ventilator's Settings

*Database:* <none>, *Stereotype:* «information», *Package:* OR to ICU As Is Workflow

*Detail:* Created on 6/2/2011. Last modified on 6/2/2011.

*Notes:*

### Connections

Name	Association	Notes
	<b>Source:</b> Ventilator Set-up. <b>Target:</b> Obtain Previous Ventilator's Settings.	
	<b>Source:</b> Obtain Previous Ventilator's Settings.	

Name	Association	Notes
	<b>Target:</b> Ventilator Mode, Ventilation Rate, Tidal Volume, FiO2, PEEP, Pressure Support, I:E Ratio.	

## Receive Patient

*Database:* <none>, *Stereotype:* «information», *Package:* OR to ICU As Is Workflow

*Detail:* Created on 6/2/2011. Last modified on 6/2/2011.

*Notes:*

### Connections

Name	Association	Notes
	<b>Source:</b> Receive Patient. <b>Target:</b> Transfer Device Settings.	

## manualProcess: Pre-Patient ICU Set up

*Database:* <none>, *Stereotype:* «BusinessProcess», *Package:* OR to ICU As Is Workflow

*Detail:* Created on 5/25/2011. Last modified on 8/17/2012.

*Notes:*

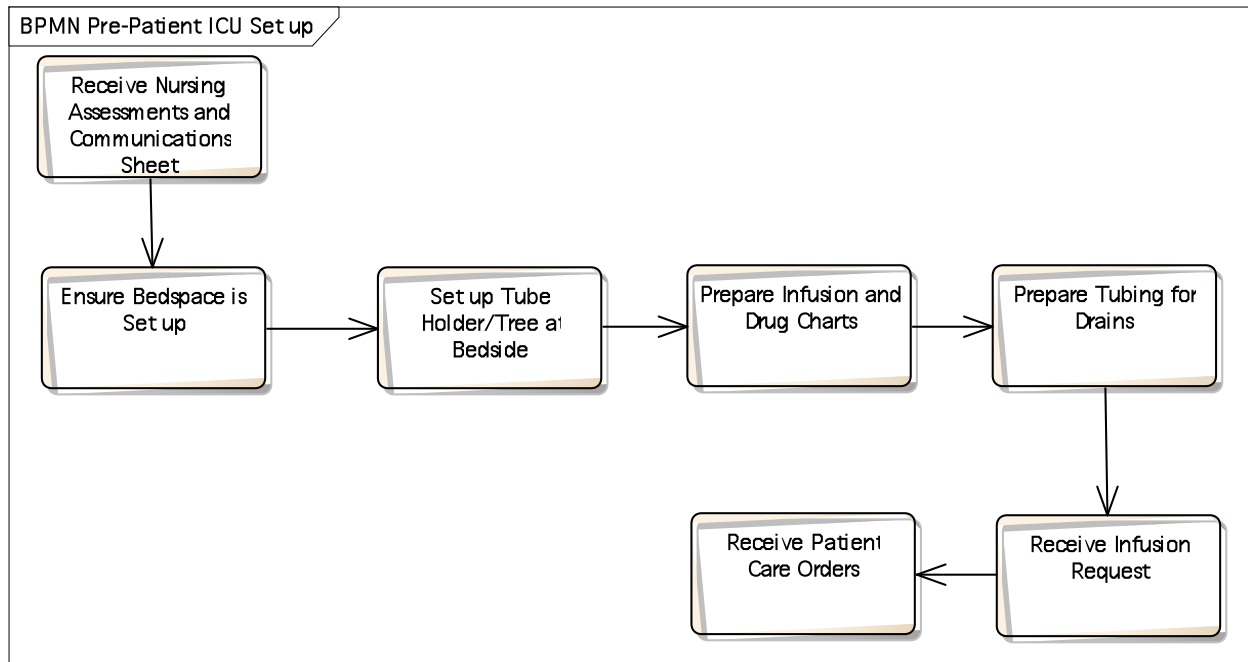
### Data Attributes

Name	Type	Notes
Communications Sheet	String	
ETA of Arrival in ICU	Integer	
ICU Bed Location	String	
Infusion and Drug Charts	String	
Infusion Request	String	
Nursing Assessments	String	
Patient Care Orders	String	

### Connections

Name	Association	Notes
	<b>Source:</b> manualProcess: Pre-Patient ICU Set up. <b>Target:</b> getISData(patientID); getOrders(patientID).	
	<b>Source:</b> ICU Staff. <b>Target:</b> manualProcess: Pre-Patient ICU Set up.	

**BPMN 1.1 diagram: Pre-Patient ICU Set up**



## Ensure Bedspace is Set up

Database: <none>, Stereotype: «Activity», Package: OR to ICU As Is Workflow

Detail: Created on 5/25/2011. Last modified on 5/25/2011.

Notes:

### Connections

Name	Association	Notes
	<b>Source:</b> Receive Nursing Assessments and Communications Sheet. <b>Target:</b> Ensure Bedspace is Set up.	
	<b>Source:</b> Ensure Bedspace is Set up. <b>Target:</b> Set up Tube Holder/Tree at Bedside.	

## Prepare Infusion and Drug Charts

Database: <none>, Stereotype: «Activity», Package: OR to ICU As Is Workflow

Detail: Created on 5/25/2011. Last modified on 5/25/2011.

Notes:

### Connections

Name	Association	Notes
	<b>Source:</b> Set up Tube Holder/Tree at Bedside. <b>Target:</b> Prepare Infusion and Drug Charts.	
	<b>Source:</b> Prepare Infusion and Drug Charts.	

Name	Association	Notes
	<b>Target:</b> Prepare Tubing for Drains.	

## Prepare Tubing for Drains

*Database:* <none>, *Stereotype:* «Activity», *Package:* OR to ICU As Is Workflow

*Detail:* Created on 5/25/2011. Last modified on 5/25/2011.

*Notes:*

### Connections

Name	Association	Notes
	<b>Source:</b> Prepare Infusion and Drug Charts. <b>Target:</b> Prepare Tubing for Drains.	
	<b>Source:</b> Prepare Tubing for Drains. <b>Target:</b> Receive Infusion Request.	

## Receive Infusion Request

*Database:* <none>, *Stereotype:* «Activity», *Package:* OR to ICU As Is Workflow

*Detail:* Created on 5/25/2011. Last modified on 4/4/2012.

*Notes:*

### Connections

Name	Association	Notes
	<b>Source:</b> Prepare Tubing for Drains. <b>Target:</b> Receive Infusion Request.	
	<b>Source:</b> Receive Infusion Request. <b>Target:</b> Receive Patient Care Orders.	

## Receive Nursing Assessments and Communications Sheet

*Database:* <none>, *Stereotype:* «Activity», *Package:* OR to ICU As Is Workflow

*Detail:* Created on 5/25/2011. Last modified on 4/23/2012.

*Notes:*

### Connections

Name	Association	Notes
	<b>Source:</b> Receive Nursing Assessments and Communications Sheet. <b>Target:</b> Ensure Bedspace is Set up.	
	<b>Source:</b> Access ICE Handoff App. <b>Target:</b> Receive Nursing Assessments and Communications Sheet.	

## Receive Patient Care Orders



*Database:* <none>, *Stereotype:* «Activity», *Package:* OR to ICU As Is Workflow  
*Detail:* Created on 5/25/2011. Last modified on 4/4/2012.  
*Notes:*

#### Connections

Name	Association	Notes
	<b>Source:</b> Receive Infusion Request. <b>Target:</b> Receive Patient Care Orders.	
	<b>Source:</b> Receive Patient Care Orders. <b>Target:</b> Complete Room Readiness Checklist.	

## Set up Tube Holder/Tree at Bedside

*Database:* <none>, *Stereotype:* «Activity», *Package:* OR to ICU As Is Workflow  
*Detail:* Created on 5/25/2011. Last modified on 5/25/2011.  
*Notes:*

#### Connections

Name	Association	Notes
	<b>Source:</b> Ensure Bedspace is Set up. <b>Target:</b> Set up Tube Holder/Tree at Bedside.	
	<b>Source:</b> Set up Tube Holder/Tree at Bedside. <b>Target:</b> Prepare Infusion and Drug Charts.	

## manualProcess: Transfer patient to ICU

*Database:* <none>, *Stereotype:* «Activity», *Package:* OR to ICU As Is Workflow  
*Detail:* Created on 5/25/2011. Last modified on 7/27/2011.  
*Notes:*

#### Connections

Name	Association	Notes
	<b>Source:</b> Patient in OR. <b>Target:</b> manualProcess: Transfer patient to ICU.	
	<b>Source:</b> manualProcess: Transfer patient to ICU. <b>Target:</b> getISData(patientID, history).	

## manualProcess: Untangle lines and cables

*Database:* <none>, *Stereotype:* «Activity», *Package:* OR to ICU As Is Workflow  
*Detail:* Created on 6/2/2011. Last modified on 8/17/2012.  
*Notes:*

#### Connections

Name	Association	Notes
------	-------------	-------

Name	Association	Notes
	<b>Source:</b> manualProcess: Untangle lines and cables. <b>Target:</b> manualProcess: Ensure Lines and Cables are Properly Labeled.	
	<b>Source:</b> setObservationData(ABG). <b>Target:</b> manualProcess: Untangle lines and cables.	

## setISData(patientID, transfer, time, fromLocation, toLocation)

*Database:* <none>, *Stereotype:* «Activity», *Package:* OR to ICU As Is Workflow

*Detail:* Created on 5/25/2011. Last modified on 7/27/2011.

*Notes:* Alert ICU prior to Transport

### Data Attributes

Name	Type	Notes
Set fromLocation	String	
Set Patient Transfer	String	
Set Patient Transfer Time	String	
Set patientID		
Set toLocation	String	

### Connections

Name	Association	Notes
	<b>Source:</b> setOrders(patientID, deviceRequest). <b>Target:</b> setISData(patientID, transfer, time, fromLocation, toLocation).	
	<b>Source:</b> setISData(patientID, transfer, time, fromLocation, toLocation). <b>Target:</b> manualProcess: Complete Communications Sheet.	
	<b>Source:</b> setObservationData(disposables). <b>Target:</b> setISData(patientID, transfer, time, fromLocation, toLocation).	
	<b>Source:</b> setObservationData(disposables). <b>Target:</b> setISData(patientID, transfer, time, fromLocation, toLocation).	
	<b>Source:</b> setISData(patientID, transfer, time, fromLocation, toLocation). <b>Target:</b> Patient leaves OR.	
	<b>Source:</b> setISData(patientID, transfer, time, fromLocation, toLocation). <b>Target:</b> Patient Leaves OR.	

## setObservationData(ABG)

*Database:* <none>, *Stereotype:* «BusinessProcess», *Package:* OR to ICU As Is Workflow

*Detail:* Created on 5/24/2011. Last modified on 8/17/2012.

*Notes:* Collect ABG

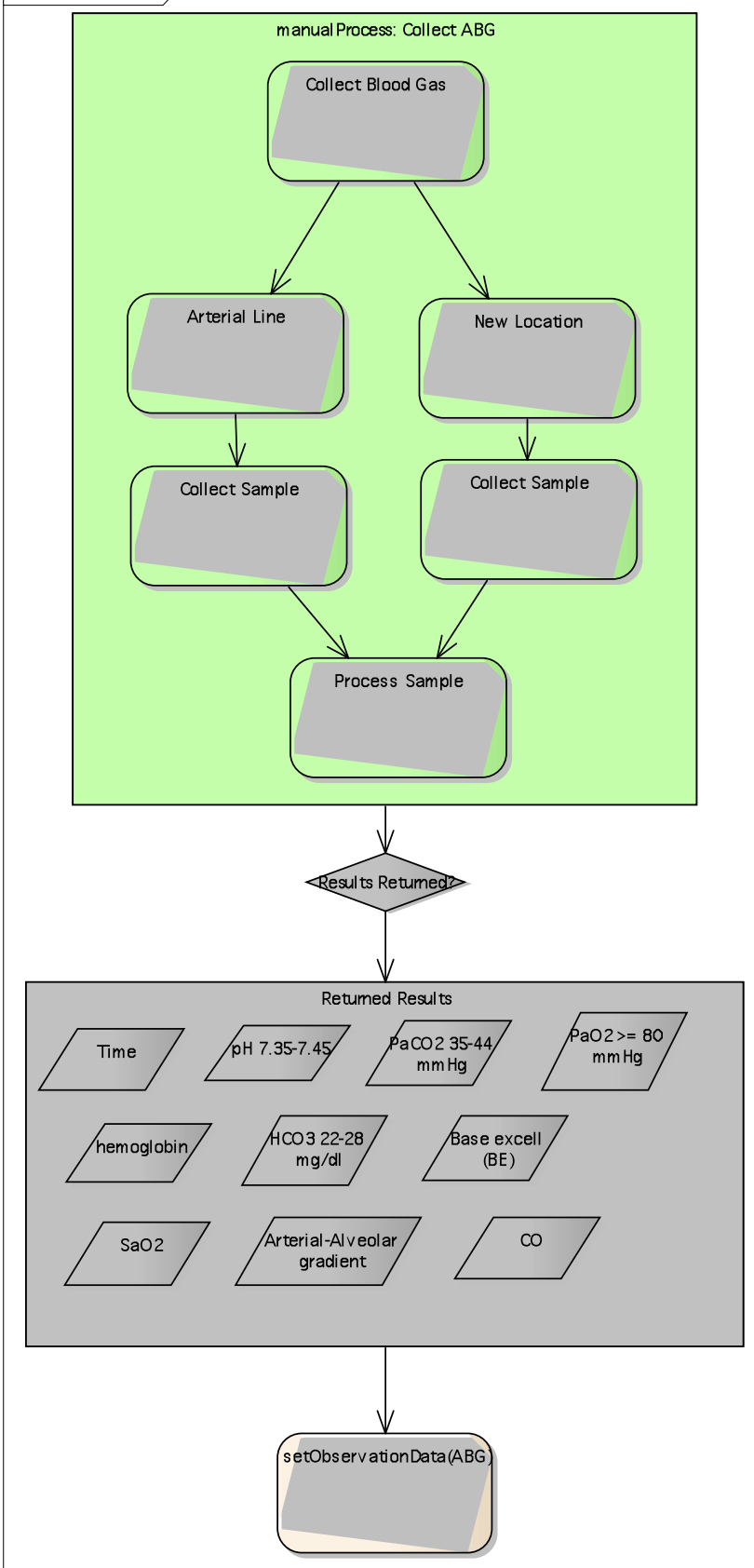
### Data Attributes

Name	Type	Notes
Arterial-Alveolar gradient	String	
Base Excell (BE)	Integer	
CO	Integer	
HCO3 mg/dl	Integer	
Hemoglobin	String	
PaCO2 mmHg	Integer	
PaO2 mmHg	Integer	
pH	Integer	
SaO2	String	
Time	String	

### Connections

Name	Association	Notes
	<b>Source:</b> getPhysData(patientID, vitals). <b>Target:</b> setObservationData(ABG).	
	<b>Source:</b> setObservationData(ABG). <b>Target:</b> manualProcess: Untangle lines and cables.	

**BPMN 1.1 diagram: Collect ABG**



## Arterial Line

Database: <none>, *Stereotype:* , *Package:* OR to ICU As Is Workflow

Detail: Created on 5/25/2011. Last modified on 7/18/2011.

Notes:

### Connections

Name	Association	Notes
	<b>Source:</b> Collect Blood Gas. <b>Target:</b> Arterial Line.	
	<b>Source:</b> Arterial Line. <b>Target:</b> Collect Sample.	

## Collect Blood Gas

Database: <none>, *Stereotype:* , *Package:* OR to ICU As Is Workflow

Detail: Created on 5/25/2011. Last modified on 7/18/2011.

Notes:

### Connections

Name	Association	Notes
	<b>Source:</b> Collect Blood Gas. <b>Target:</b> Arterial Line.	
	<b>Source:</b> Collect Blood Gas. <b>Target:</b> New Location.	

## Collect Sample

Database: <none>, *Stereotype:* , *Package:* OR to ICU As Is Workflow

Detail: Created on 5/25/2011. Last modified on 7/18/2011.

Notes:

### Connections

Name	Association	Notes
	<b>Source:</b> New Location. <b>Target:</b> Collect Sample.	
	<b>Source:</b> Collect Sample. <b>Target:</b> Process Sample.	

## Collect Sample

Database: <none>, *Stereotype:* , *Package:* OR to ICU As Is Workflow

*Detail:* Created on 5/25/2011. Last modified on 7/18/2011.  
*Notes:*

Connections

Name	Association	Notes
	<b>Source:</b> Arterial Line. <b>Target:</b> Collect Sample.	
	<b>Source:</b> Collect Sample. <b>Target:</b> Process Sample.	

## New Location

*Database:* <none>, *Stereotype:* , *Package:* OR to ICU As Is Workflow  
*Detail:* Created on 5/25/2011. Last modified on 7/18/2011.  
*Notes:*

Connections

Name	Association	Notes
	<b>Source:</b> Collect Blood Gas. <b>Target:</b> New Location.	
	<b>Source:</b> New Location. <b>Target:</b> Collect Sample.	

## Process Sample

*Database:* <none>, *Stereotype:* , *Package:* OR to ICU As Is Workflow  
*Detail:* Created on 5/25/2011. Last modified on 7/18/2011.  
*Notes:*

Connections

Name	Association	Notes
	<b>Source:</b> Collect Sample. <b>Target:</b> Process Sample.	
	<b>Source:</b> Collect Sample. <b>Target:</b> Process Sample.	

## setObservationData(ABG)

*Database:* <none>, *Stereotype:* , *Package:* OR to ICU As Is Workflow  
*Detail:* Created on 7/27/2011. Last modified on 8/17/2012.  
*Notes:*

Connections

Name	Association	Notes
------	-------------	-------

Name	Association	Notes
	<b>Source:</b> Returned Results. <b>Target:</b> setObservationData(ABG).	

## Results Returned?

*Database:* <none>, *Stereotype:* , *Package:* OR to ICU As Is Workflow

*Detail:* Created on 5/25/2011. Last modified on 7/18/2011.

*Notes:*

### Connections

Name	Association	Notes
	<b>Source:</b> Results Returned?. <b>Target:</b> Returned Results.	
	<b>Source:</b> manualProcess: Collect ABG. <b>Target:</b> Results Returned?.	
	<b>Source:</b> manualProcess: Collect ABG. <b>Target:</b> Results Returned?.	
Yes	<b>Source:</b> Results Returned?. <b>Target:</b> Returned Results.	

## Arterial-Alveolar gradient

*Database:* <none>, *Stereotype:* «information», *Package:* OR to ICU As Is Workflow

*Detail:* Created on 5/25/2011. Last modified on 7/18/2011.

*Notes:*

## Base excell (BE)

*Database:* <none>, *Stereotype:* «information», *Package:* OR to ICU As Is Workflow

*Detail:* Created on 5/25/2011. Last modified on 7/18/2011.

*Notes:*

## CO

*Database:* <none>, *Stereotype:* «information», *Package:* OR to ICU As Is Workflow

*Detail:* Created on 5/25/2011. Last modified on 7/18/2011.

*Notes:*

## HCO3 22-28 mg/dl

*Database:* <none>, *Stereotype:* «information», *Package:* OR to ICU As Is Workflow

*Detail:* Created on 5/25/2011. Last modified on 7/18/2011.

*Notes:*

## hemoglobin

*Database:* <none>, *Stereotype:* «information», *Package:* OR to ICU As Is Workflow  
*Detail:* Created on 5/25/2011. Last modified on 7/18/2011.  
*Notes:*

## PaCO2 35-44 mmHg

*Database:* <none>, *Stereotype:* «information», *Package:* OR to ICU As Is Workflow  
*Detail:* Created on 5/25/2011. Last modified on 7/18/2011.  
*Notes:*

## PaO2 >= 80 mmHg

*Database:* <none>, *Stereotype:* «information», *Package:* OR to ICU As Is Workflow  
*Detail:* Created on 5/25/2011. Last modified on 7/18/2011.  
*Notes:*

## pH 7.35-7.45

*Database:* <none>, *Stereotype:* «information», *Package:* OR to ICU As Is Workflow  
*Detail:* Created on 5/25/2011. Last modified on 7/18/2011.  
*Notes:*

## SaO2

*Database:* <none>, *Stereotype:* «information», *Package:* OR to ICU As Is Workflow  
*Detail:* Created on 5/25/2011. Last modified on 7/18/2011.  
*Notes:*

## Time

*Database:* <none>, *Stereotype:* «information», *Package:* OR to ICU As Is Workflow  
*Detail:* Created on 5/25/2011. Last modified on 7/18/2011.  
*Notes:*

## manualProcess: Collect ABG

*Database:* <none>, *Stereotype:* , *Package:* OR to ICU As Is Workflow  
*Detail:* Created on 7/18/2011. Last modified on 7/18/2011.  
*Notes:*

### Connections

Name	Association	Notes
	<b>Source:</b> manualProcess: Collect ABG. <b>Target:</b> Results Returned?.	

## Returned Results

*Database:* <none>, *Stereotype:* , *Package:* OR to ICU As Is Workflow  
*Detail:* Created on 5/25/2011. Last modified on 5/25/2011.  
*Notes:*

### Connections

Name	Association	Notes
Yes	<b>Source:</b> Results Returned?. <b>Target:</b>	



Name	Association	Notes
	Returned Results.	

## setObservationData(IVLines)

*Database:* <none>, *Stereotype:* «BusinessProcess», *Package:* OR to ICU As Is Workflow

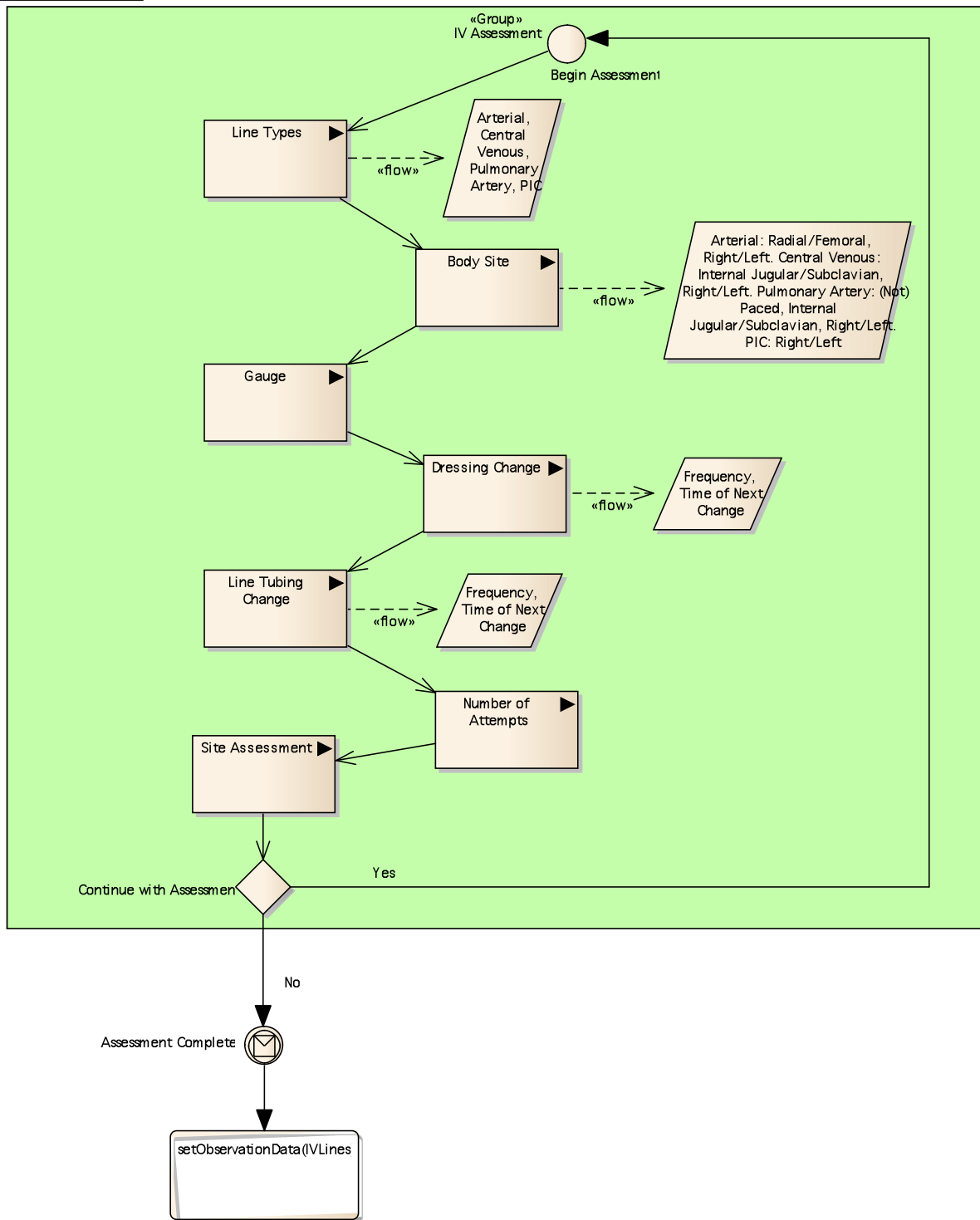
*Detail:* Created on 5/25/2011. Last modified on 7/27/2011.

*Notes:* Identify IV Lines

### Connections

Name	Association	Notes
	<b>Source:</b> getISData(patientID, history). <b>Target:</b> setObservationData(IVLines).	
	<b>Source:</b> setObservationData(IVLines). <b>Target:</b> setObservationData(disposables).	

**BPMN 1.1 diagram: Identify IV Lines**



## setObservationData(IVLines)

Database: <none>, Stereotype: «Activity», Package: OR to ICU As Is Workflow

Detail:  
Notes:

Created on 7/27/2011. Last modified on 7/27/2011.

#### Connections

Name	Association	Notes
	<b>Source:</b> Right, Left. <b>Target:</b> setObservationData(IVLines).	
	<b>Source:</b> Radial, Femoral. <b>Target:</b> setObservationData(IVLines).	
	<b>Source:</b> Right, Left. <b>Target:</b> setObservationData(IVLines).	
	<b>Source:</b> Internal Jugular (IJ), Subclavian (SC). <b>Target:</b> setObservationData(IVLines).	
	<b>Source:</b> Right, Left. <b>Target:</b> setObservationData(IVLines).	
	<b>Source:</b> Internal Jugular (IJ), Subclavian (SC). <b>Target:</b> setObservationData(IVLines).	
	<b>Source:</b> Paced, Not Paced. <b>Target:</b> setObservationData(IVLines).	
	<b>Source:</b> Right, Left. <b>Target:</b> setObservationData(IVLines).	

## Internal Jugular (IJ), Subclavian (SC)

Database: <none>, Stereotype: «information», Package: OR to ICU As Is Workflow

Detail: Created on 5/25/2011. Last modified on 7/27/2011.

Notes:

#### Connections

Name	Association	Notes
	<b>Source:</b> Pulmonary Artery Lines Connected. <b>Target:</b> Internal Jugular (IJ), Subclavian (SC).	
	<b>Source:</b> Internal Jugular (IJ), Subclavian (SC). <b>Target:</b> setObservationData(IVLines).	

## Internal Jugular (IJ), Subclavian (SC)

*Database:* <none>, *Stereotype:* «information», *Package:* OR to ICU As Is Workflow  
*Detail:* Created on 5/25/2011. Last modified on 7/27/2011.  
*Notes:*

### Connections

Name	Association	Notes
	<b>Source:</b> Central Venous Lines Connected. <b>Target:</b> Internal Jugular (IJ), Subclavian (SC).	
	<b>Source:</b> Internal Jugular (IJ), Subclavian (SC). <b>Target:</b> setObservationData(IVLines).	

## Paced, Not Paced

*Database:* <none>, *Stereotype:* «information», *Package:* OR to ICU As Is Workflow  
*Detail:* Created on 5/25/2011. Last modified on 7/27/2011.  
*Notes:*

### Connections

Name	Association	Notes
	<b>Source:</b> Pulmonary Artery Lines Connected. <b>Target:</b> Paced, Not Paced.	
	<b>Source:</b> Paced, Not Paced. <b>Target:</b> setObservationData(IVLines).	

## Radial, Femoral

*Database:* <none>, *Stereotype:* «information», *Package:* OR to ICU As Is Workflow  
*Detail:* Created on 5/25/2011. Last modified on 7/27/2011.  
*Notes:*

### Connections

Name	Association	Notes
	<b>Source:</b> Arterial Lines Connected. <b>Target:</b> Radial, Femoral.	
	<b>Source:</b> Radial, Femoral. <b>Target:</b> setObservationData(IVLines).	

## Right, Left

*Database:* <none>, *Stereotype:* «information», *Package:* OR to ICU As Is Workflow  
*Detail:* Created on 5/25/2011. Last modified on 7/27/2011.  
*Notes:*

### Connections

Name	Association	Notes
	<b>Source:</b> Central Venous Lines Connected. <b>Target:</b> Right, Left.	
	<b>Source:</b> Right, Left. <b>Target:</b> setObservationData(IVLines).	

## Right, Left

*Database:* <none>, *Stereotype:* «information», *Package:* OR to ICU As Is Workflow

*Detail:* Created on 5/25/2011. Last modified on 7/27/2011.

*Notes:*

### Connections

Name	Association	Notes
	<b>Source:</b> Pulmonary Artery Lines Connected. <b>Target:</b> Right, Left.	
	<b>Source:</b> Right, Left. <b>Target:</b> setObservationData(IVLines).	

## Right, Left

*Database:* <none>, *Stereotype:* «information», *Package:* OR to ICU As Is Workflow

*Detail:* Created on 5/25/2011. Last modified on 7/27/2011.

*Notes:*

### Connections

Name	Association	Notes
	<b>Source:</b> PIC. <b>Target:</b> Right, Left.	
	<b>Source:</b> Right, Left. <b>Target:</b> setObservationData(IVLines).	

## Right, Left

*Database:* <none>, *Stereotype:* «information», *Package:* OR to ICU As Is Workflow

*Detail:* Created on 5/25/2011. Last modified on 7/27/2011.

*Notes:*

### Connections

Name	Association	Notes
	<b>Source:</b> Arterial Lines Connected. <b>Target:</b>	

Name	Association	Notes
	Right, Left.	
	<b>Source:</b> Right, Left. <b>Target:</b> setObservationData(IVLines).	

## setObservationData(IVLines)

*Database:* <none>, *Stereotype:* «Activity», *Package:* OR to ICU As Is Workflow

*Detail:* Created on 8/14/2012. Last modified on 2/8/2012.

*Notes:*

### Data Attributes

Name	Type	Notes
Body Site	String	
Dressing Change Frequency	String	
Gauge	String	
Line Tubing Change Frequency	String	
Line Type	String	
Site Assessment	String	

### Connections

Name	Association	Notes
	<b>Source:</b> Assessment Complete. <b>Target:</b> setObservationData(IVLines).	

## Continue with Assessment

*Database:* <none>, *Stereotype:* «Gateway», *Package:* OR to ICU As Is Workflow

*Detail:* Created on 8/14/2012. Last modified on 2/8/2012.

*Notes:*

### Connections

Name	Association	Notes
	<b>Source:</b> Site Assessment. <b>Target:</b> Continue with Assessment.	
	<b>Source:</b> Continue with Assessment. <b>Target:</b> Begin Assessment.	
	<b>Source:</b> Continue with Assessment. <b>Target:</b> Assessment Complete.	

## Arterial, Central Venous, Pulmonary Artery, PIC

*Database:* <none>, *Stereotype:* «information», *Package:* OR to ICU As Is Workflow

*Detail:* Created on 8/14/2012. Last modified on 2/8/2012.

*Notes:*

### Connections

Name	Association	Notes
	<b>Source:</b> Line Types. <b>Target:</b> Arterial, Central Venous, Pulmonary Artery, PIC.	

## Arterial: Radial/Femoral, Right/Left. Central Venous: Internal Jugular/Subclavian, Right/Left. Pulmonary Artery: (Not) Paced, Internal Jugular/Subclavian, Right/Left. PIC: Right/Left

Database: <none>, *Stereotype:* «information», *Package:* OR to ICU As Is Workflow

Detail: Created on 8/14/2012. Last modified on 2/8/2012.

Notes:

### Connections

Name	Association	Notes
	<b>Source:</b> Body Site. <b>Target:</b> Arterial: Radial/Femoral, Right/Left. Central Venous: Internal Jugular/Subclavian, Right/Left. Pulmonary Artery: (Not) Paced, Internal Jugular/Subclavian, Right/Left. PIC: Right/Left.	

## Frequency, Time of Next Change

Database: <none>, *Stereotype:* «information», *Package:* OR to ICU As Is Workflow

Detail: Created on 8/14/2012. Last modified on 2/8/2012.

Notes:

### Connections

Name	Association	Notes
	<b>Source:</b> Line Tubing Change. <b>Target:</b> Frequency, Time of Next Change.	

## Frequency, Time of Next Change

Database: <none>, *Stereotype:* «information», *Package:* OR to ICU As Is Workflow

Detail: Created on 8/14/2012. Last modified on 2/8/2012.

Notes:

### Connections

Name	Association	Notes
	<b>Source:</b> Dressing Change. <b>Target:</b> Frequency, Time of Next Change.	

## Assessment Complete

Database: <none>, *Stereotype:* «IntermediateEvent», *Package:* OR to ICU As Is Workflow

Detail: Created on 8/14/2012. Last modified on 2/8/2012.

Notes:

### Connections

Name	Association	Notes
	<b>Source:</b> Assessment Complete. <b>Target:</b> setObservationData(IVLines).	
	<b>Source:</b> Continue with Assessment. <b>Target:</b> Assessment Complete.	

## Begin Assessment

Database: <none>, Stereotype: «StartEvent», Package: OR to ICU As Is Workflow

Detail: Created on 8/14/2012. Last modified on 2/8/2012.

Notes:

### Connections

Name	Association	Notes
	<b>Source:</b> Begin Assessment. <b>Target:</b> Line Types.	
	<b>Source:</b> Continue with Assessment. <b>Target:</b> Begin Assessment.	

## Body Site

Database: Java, Stereotype: , Package: OR to ICU As Is Workflow

Detail: Created on 8/14/2012. Last modified on 8/14/2012.

Notes:

### Connections

Name	Association	Notes
	<b>Source:</b> Line Types. <b>Target:</b> Body Site.	
	<b>Source:</b> Body Site. <b>Target:</b> Gauge.	
	<b>Source:</b> Body Site. <b>Target:</b> Arterial: Radial/Femoral, Right/Left. Central Venous: Internal Jugular/Subclavian, Right/Left. Pulmonary Artery: (Not) Paced, Internal Jugular/Subclavian, Right/Left. PIC: Right/Left.	

## Dressing Change

Database: Java, Stereotype: , Package: OR to ICU As Is Workflow

Detail: Created on 8/14/2012. Last modified on 8/14/2012.



Notes:

Connections

Name	Association	Notes
	<b>Source:</b> Gauge. <b>Target:</b> Dressing Change.	
	<b>Source:</b> Dressing Change. <b>Target:</b> Line Tubing Change.	
	<b>Source:</b> Dressing Change. <b>Target:</b> Frequency, Time of Next Change.	

## Gauge

Database: Java, *Stereotype:* , *Package:* OR to ICU As Is Workflow

Detail: Created on 8/14/2012. Last modified on 8/14/2012.

Notes:

Connections

Name	Association	Notes
	<b>Source:</b> Gauge. <b>Target:</b> Dressing Change.	
	<b>Source:</b> Body Site. <b>Target:</b> Gauge.	

## Line Tubing Change

Database: Java, *Stereotype:* , *Package:* OR to ICU As Is Workflow

Detail: Created on 8/14/2012. Last modified on 8/14/2012.

Notes:

Connections

Name	Association	Notes
	<b>Source:</b> Dressing Change. <b>Target:</b> Line Tubing Change.	
	<b>Source:</b> Line Tubing Change. <b>Target:</b> Number of Attempts.	
	<b>Source:</b> Line Tubing Change. <b>Target:</b> Frequency, Time of Next Change.	

## Line Types

Database: Java, *Stereotype:* , *Package:* OR to ICU As Is Workflow  
 Detail: Created on 8/14/2012. Last modified on 8/14/2012.  
 Notes:

#### Connections

Name	Association	Notes
	<b>Source:</b> Line Types. <b>Target:</b> Body Site.	
	<b>Source:</b> Line Types. <b>Target:</b> Arterial, Central Venous, Pulmonary Artery, PIC.	
	<b>Source:</b> Begin Assessment. <b>Target:</b> Line Types.	

## Number of Attempts

Database: Java, *Stereotype:* , *Package:* OR to ICU As Is Workflow  
 Detail: Created on 8/14/2012. Last modified on 8/14/2012.  
 Notes:

#### Connections

Name	Association	Notes
	<b>Source:</b> Number of Attempts. <b>Target:</b> Site Assessment.	
	<b>Source:</b> Line Tubing Change. <b>Target:</b> Number of Attempts.	

## Site Assessment

Database: Java, *Stereotype:* , *Package:* OR to ICU As Is Workflow  
 Detail: Created on 8/14/2012. Last modified on 8/14/2012.  
 Notes:

#### Connections

Name	Association	Notes
	<b>Source:</b> Site Assessment. <b>Target:</b> Continue with Assessment.	
	<b>Source:</b> Number of Attempts. <b>Target:</b> Site Assessment.	

## setObservationData(disposables)

Database: <none>, *Stereotype:* «BusinessProcess», *Package:* OR to ICU As Is Workflow  
 Detail: Created on 5/25/2011. Last modified on 7/27/2011.

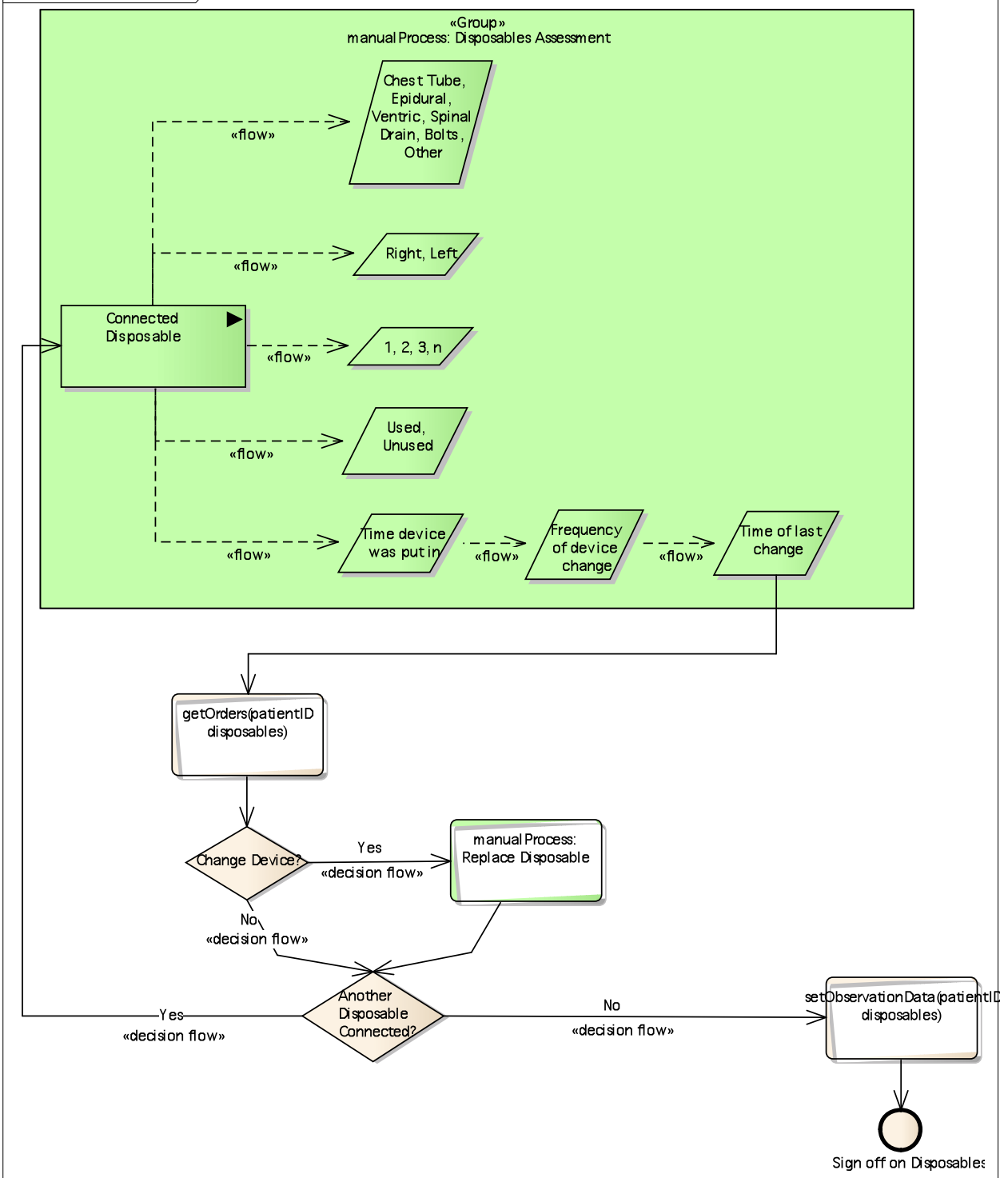
*Notes:* Identify Disposables

**Connections**

<b>Name</b>	<b>Association</b>	<b>Notes</b>
	<b>Source:</b> setObservationData(IVLines). <b>Target:</b> setObservationData(disposables).	
	<b>Source:</b> setObservationData(disposables). <b>Target:</b> setOrders(patientID, bloodRequest, dripRequest).	
	<b>Source:</b> manualProcess: Transfer Patient to ICU Devices. <b>Target:</b> setObservationData(disposables).	
	<b>Source:</b> setObservationData(disposables). <b>Target:</b> setISData(patientID, transfer, time, fromLocation, toLocation).	

**BPMN 1.1 diagram: Identify Disposables**

# BPMN Identify Disposables



## getOrders(patientID, disposables)

Database: <none>, Stereotype: «Activity», Package: OR to ICU As Is Workflow  
 Detail: Created on 5/25/2011. Last modified on 7/27/2011.

Notes:

Data Attributes

Name	Type	Notes
Patient Care Orders	String	
patientID	String	

Connections

Name	Association	Notes
	<b>Source:</b> Time of last change. <b>Target:</b> getOrders(patientID, disposables).	
	<b>Source:</b> getOrders(patientID, disposables). <b>Target:</b> Change Device?.	

## manualProcess: Replace Disposable

Database: <none>, Stereotype: «Activity», Package: OR to ICU As Is Workflow

Detail: Created on 5/25/2011. Last modified on 8/16/2012.

Notes:

Connections

Name	Association	Notes
	<b>Source:</b> manualProcess: Replace Disposable. <b>Target:</b> Another Disposable Connected?.	
Yes	<b>Source:</b> Change Device?. <b>Target:</b> manualProcess: Replace Disposable.	

## setObservationData(patientID, disposables)

Database: <none>, Stereotype: «Activity», Package: OR to ICU As Is Workflow

Detail: Created on 7/27/2011. Last modified on 7/27/2011.

Notes:

Data Attributes

Name	Type	Notes
disposables	String	
patientID	String	

Connections

Name	Association	Notes
	<b>Source:</b> setObservationData(patientID, disposables). <b>Target:</b> Sign off on Disposables.	
No	<b>Source:</b> Another Disposable Connected?. <b>Target:</b> setObservationData(patientID, disposables).	

## Another Disposable Connected?

Database: <none>, *Stereotype:* , *Package:* OR to ICU As Is Workflow  
Detail: Created on 5/25/2011. Last modified on 7/27/2011.  
Notes:

#### Connections

Name	Association	Notes
	<b>Source:</b> manualProcess: Replace Disposable. <b>Target:</b> Another Disposable Connected?.	
No	<b>Source:</b> Another Disposable Connected?. <b>Target:</b> setObservationData(patientID, disposables).	
No	<b>Source:</b> Change Device?. <b>Target:</b> Another Disposable Connected?.	
Yes	<b>Source:</b> Another Disposable Connected?. <b>Target:</b> Connected Disposable.	

## Change Device?

Database: <none>, *Stereotype:* , *Package:* OR to ICU As Is Workflow  
Detail: Created on 5/25/2011. Last modified on 5/25/2011.  
Notes:

#### Connections

Name	Association	Notes
	<b>Source:</b> getOrders(patientID, disposables). <b>Target:</b> Change Device?.	
No	<b>Source:</b> Change Device?. <b>Target:</b> Another Disposable Connected?.	
Yes	<b>Source:</b> Change Device?. <b>Target:</b> manualProcess: Replace Disposable.	

## 1, 2, 3, n

Database: <none>, *Stereotype:* «information», *Package:* OR to ICU As Is Workflow  
Detail: Created on 5/25/2011. Last modified on 7/27/2011.  
Notes:

#### Connections

Name	Association	Notes
	<b>Source:</b> Connected Disposable. <b>Target:</b> 1, 2, 3, n.	

## Chest Tube, Epidural, Ventric, Spinal Drain, Bolts, Other

*Database:* <none>, *Stereotype:* «information», *Package:* OR to ICU As Is Workflow  
*Detail:* Created on 5/25/2011. Last modified on 7/27/2011.  
*Notes:*

### Connections

Name	Association	Notes
	<b>Source:</b> Connected Disposable. <b>Target:</b> Chest Tube, Epidural, Ventric, Spinal Drain, Bolts, Other.	

## Frequency of device change

*Database:* <none>, *Stereotype:* «information», *Package:* OR to ICU As Is Workflow  
*Detail:* Created on 5/25/2011. Last modified on 7/27/2011.  
*Notes:*

### Connections

Name	Association	Notes
	<b>Source:</b> Time device was put in. <b>Target:</b> Frequency of device change.	
	<b>Source:</b> Frequency of device change. <b>Target:</b> Time of last change.	

## Right, Left

*Database:* <none>, *Stereotype:* «information», *Package:* OR to ICU As Is Workflow  
*Detail:* Created on 5/25/2011. Last modified on 7/27/2011.  
*Notes:*

### Connections

Name	Association	Notes
	<b>Source:</b> Connected Disposable. <b>Target:</b> Right, Left.	

## Time device was put in

*Database:* <none>, *Stereotype:* «information», *Package:* OR to ICU As Is Workflow  
*Detail:* Created on 5/25/2011. Last modified on 7/27/2011.  
*Notes:*

### Connections

Name	Association	Notes
	<b>Source:</b> Connected Disposable. <b>Target:</b> Time device was put in.	
	<b>Source:</b> Time device was put in.	

Name	Association	Notes
	<b>Target:</b> Frequency of device change.	

## Time of last change

*Database:* <none>, *Stereotype:* «information», *Package:* OR to ICU As Is Workflow

*Detail:* Created on 5/25/2011. Last modified on 7/27/2011.

*Notes:*

### Connections

Name	Association	Notes
	<b>Source:</b> Frequency of device change. <b>Target:</b> Time of last change.	
	<b>Source:</b> Time of last change. <b>Target:</b> getOrders(patientID, disposables).	

## Used, Unused

*Database:* <none>, *Stereotype:* «information», *Package:* OR to ICU As Is Workflow

*Detail:* Created on 5/25/2011. Last modified on 7/27/2011.

*Notes:*

### Connections

Name	Association	Notes
	<b>Source:</b> Connected Disposable. <b>Target:</b> Used, Unused.	

## Sign off on Disposables

*Database:* <none>, *Stereotype:* «EndEvent», *Package:* OR to ICU As Is Workflow

*Detail:* Created on 5/25/2011. Last modified on 5/25/2011.

*Notes:*

### Connections

Name	Association	Notes
	<b>Source:</b> setObservationData(patientID, disposables). <b>Target:</b> Sign off on Disposables.	

## setOrders(patientID)

*Database:* <none>, *Stereotype:* «Activity», *Package:* OR to ICU As Is Workflow

*Detail:* Created on 6/2/2011. Last modified on 7/27/2011.

*Notes:* Order Labs

### Data Attributes

Name	Type	Notes
patientCareOrders	String	
patientID	String	



### Connections

Name	Association	Notes
	<b>Source:</b> manualProcess: Clinical Examination. <b>Target:</b> setOrders(patientID).	

## setOrders(patientID, bloodRequest, dripRequest)

*Database:* <none>, *Stereotype:* «BusinessProcess», *Package:* OR to ICU As Is Workflow

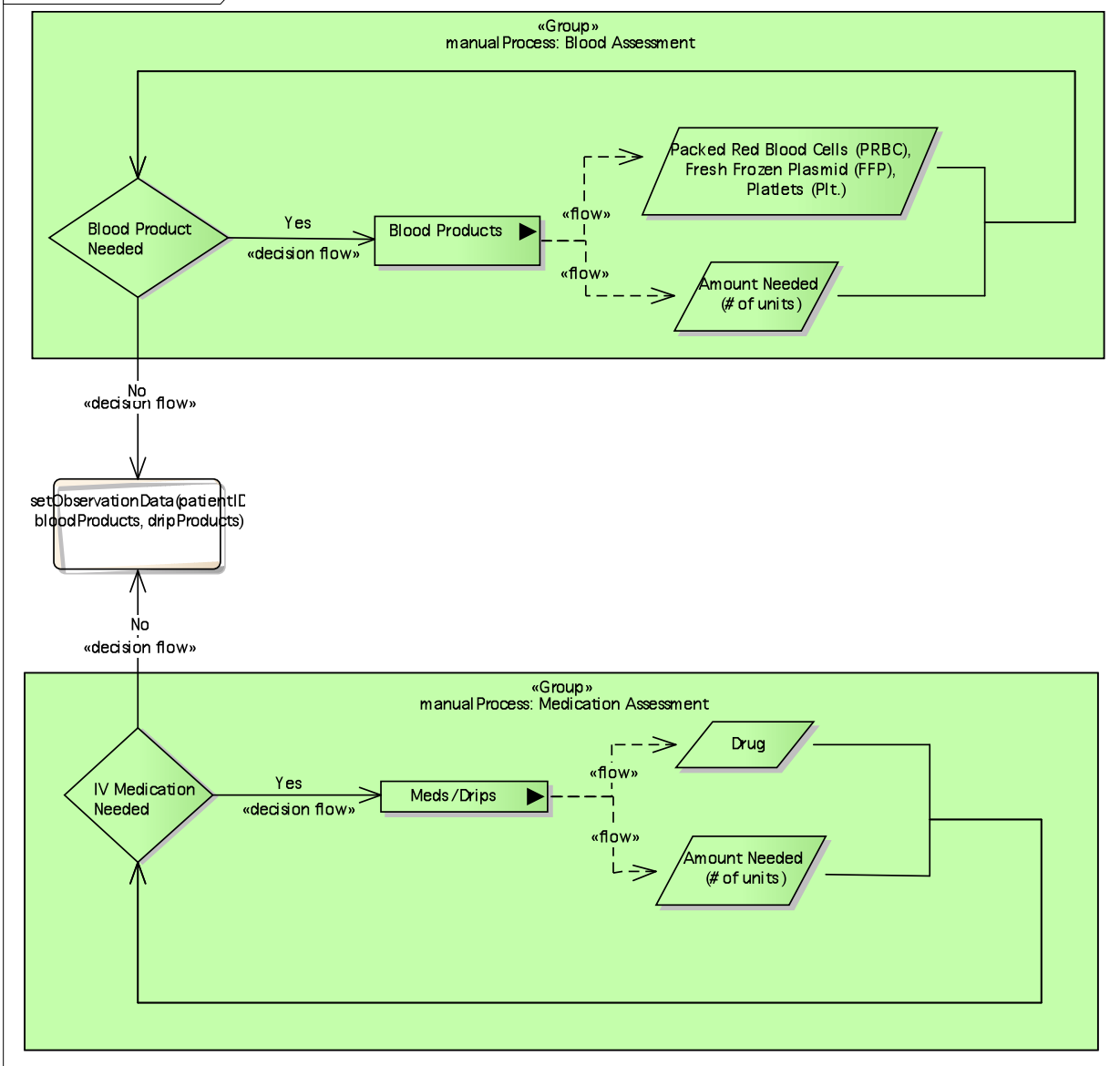
*Detail:* Created on 5/25/2011. Last modified on 2/8/2012.

*Notes:* ICU Infusion Request

### Connections

Name	Association	Notes
	<b>Source:</b> setObservationData(disposables). <b>Target:</b> setOrders(patientID, bloodRequest, dripRequest).	
	<b>Source:</b> setOrders(patientID, bloodRequest, dripRequest). <b>Target:</b> setOrders(patientID, deviceRequest).	

**BPMN 1.1 diagram: ICU Infusion Request**



## setObservationData(patientID, bloodProducts, dripProducts)

*Database:* <none>, *Stereotype:* «Activity», *Package:* OR to ICU As Is Workflow

*Detail:* Created on 7/27/2011. Last modified on 7/27/2011.

*Notes:*

### Data Attributes

Name	Type	Notes
bloodProducts	String	
dripProducts	String	
patientID	String	

### Connections

Name	Association	Notes
------	-------------	-------

Name	Association	Notes
No	<b>Source:</b> Blood Product Needed. <b>Target:</b> setObservationData(patientID, bloodProducts, dripProducts).	
No	<b>Source:</b> IV Medication Needed. <b>Target:</b> setObservationData(patientID, bloodProducts, dripProducts).	

## Blood Product Needed

Database: <none>, Stereotype: , Package: OR to ICU As Is Workflow

Detail: Created on 5/25/2011. Last modified on 7/27/2011.

Notes:

### Connections

Name	Association	Notes
	<b>Source:</b> Packed Red Blood Cells (PRBC), Fresh Frozen Plasmid (FFP), Platelets (Plt.). <b>Target:</b> Blood Product Needed.	
	<b>Source:</b> Amount Needed (# of units). <b>Target:</b> Blood Product Needed.	
No	<b>Source:</b> Blood Product Needed. <b>Target:</b> setObservationData(patientID, bloodProducts, dripProducts).	
Yes	<b>Source:</b> Blood Product Needed. <b>Target:</b> Blood Products.	

## IV Medication Needed

Database: <none>, Stereotype: , Package: OR to ICU As Is Workflow

Detail: Created on 5/25/2011. Last modified on 7/27/2011.

Notes:

### Connections

Name	Association	Notes
	<b>Source:</b> Drug. <b>Target:</b> IV Medication Needed.	
	<b>Source:</b> Amount Needed (# of units). <b>Target:</b> IV Medication Needed.	
No	<b>Source:</b> IV Medication Needed. <b>Target:</b> setObservationData(patientID, bloodProducts, dripProducts).	

Name	Association	Notes
Yes	<b>Source:</b> IV Medication Needed. <b>Target:</b> Meds/Drips.	

## Amount Needed (# of units)

*Database:* <none>, *Stereotype:* «information», *Package:* OR to ICU As Is Workflow

*Detail:* Created on 5/25/2011. Last modified on 7/27/2011.

*Notes:*

### Connections

Name	Association	Notes
	<b>Source:</b> Blood Products. <b>Target:</b> Amount Needed (# of units).	
	<b>Source:</b> Amount Needed (# of units). <b>Target:</b> Blood Product Needed.	

## Amount Needed (# of units)

*Database:* <none>, *Stereotype:* «information», *Package:* OR to ICU As Is Workflow

*Detail:* Created on 5/25/2011. Last modified on 7/27/2011.

*Notes:*

### Connections

Name	Association	Notes
	<b>Source:</b> Meds/Drips. <b>Target:</b> Amount Needed (# of units).	
	<b>Source:</b> Amount Needed (# of units). <b>Target:</b> IV Medication Needed.	

## Drug

*Database:* <none>, *Stereotype:* «information», *Package:* OR to ICU As Is Workflow

*Detail:* Created on 5/25/2011. Last modified on 7/27/2011.

*Notes:*

### Connections

Name	Association	Notes
	<b>Source:</b> Meds/Drips. <b>Target:</b> Drug.	
	<b>Source:</b> Drug. <b>Target:</b> IV Medication Needed.	

## Packed Red Blood Cells (PRBC), Fresh Frozen Plasmid (FFP), Platlets (Plt.)

*Database:* <none>, *Stereotype:* «information», *Package:* OR to ICU As Is Workflow

*Detail:* Created on 5/25/2011. Last modified on 7/27/2011.

*Notes:*

### Connections

Name	Association	Notes
	<b>Source:</b> Blood Products. <b>Target:</b> Packed Red Blood Cells (PRBC), Fresh Frozen Plasmid (FFP), Platlets (Plt.).	
	<b>Source:</b> Packed Red Blood Cells (PRBC), Fresh Frozen Plasmid (FFP), Platlets (Plt.). <b>Target:</b> Blood Product Needed.	

## setOrders(patientID, deviceRequest)

*Database:* <none>, *Stereotype:* «BusinessProcess», *Package:* OR to ICU As Is Workflow

*Detail:* Created on 5/25/2011. Last modified on 7/27/2011.

*Notes:* Device Request

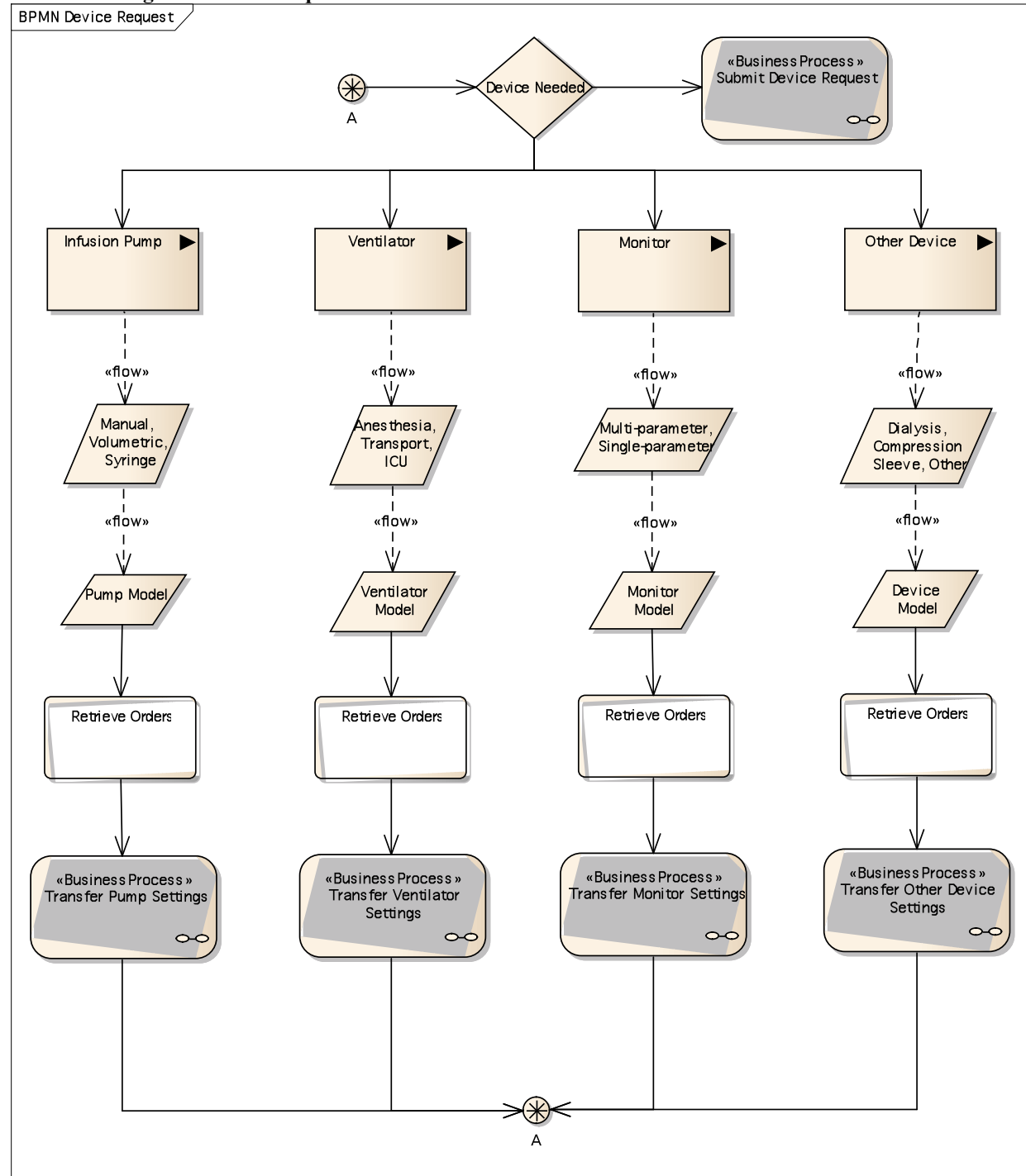
### Data Attributes

Name	Type	Notes
Infusion Pump Model	String	
Infusion Pump Type	String	
Infusion Pump, Get Orders	UnlimitedNatural	
Infusion Pump, Transfer Settings	UnlimitedNatural	
Monitor Model	String	
Monitor Type	String	
Monitor, Get Orders	UnlimitedNatural	
Monitor, Transfer Settings	UnlimitedNatural	
Other Devices	String	
Other Devices, Get Orders	UnlimitedNatural	
Other Devices, Model	String	
Other Devices, Transfer Settings	UnlimitedNatural	
Submit Device Request	UnlimitedNatural	
Ventillator Model	String	
Ventillator Type	String	
Ventillator, Get Orders	UnlimitedNatural	
Ventillator, Transfer Settings	UnlimitedNatural	

### Connections

Name	Association	Notes
	<b>Source:</b> setOrders(patientID, bloodRequest, dripRequest). <b>Target:</b> setOrders(patientID, deviceRequest).	
	<b>Source:</b> setOrders(patientID, deviceRequest). <b>Target:</b> setISData(patientID, transfer, time, fromLocation, toLocation).	

## BPMN 1.1 diagram: Device Request



## Retrieve Orders

Database: <none>, Stereotype: «Activity», Package: OR to ICU As Is Workflow

Detail: Created on 5/25/2011. Last modified on 5/25/2011.

Notes:

### Connections

Name	Association	Notes
	<b>Source:</b> Pump Model. <b>Target:</b> Retrieve Orders.	
	<b>Source:</b> Retrieve Orders. <b>Target:</b> Transfer Pump Settings.	

## Retrieve Orders

Database: <none>, *Stereotype:* «Activity», *Package:* OR to ICU As Is Workflow

Detail: Created on 5/25/2011. Last modified on 5/25/2011.

Notes:

### Connections

Name	Association	Notes
	<b>Source:</b> Ventilator Model. <b>Target:</b> Retrieve Orders.	
	<b>Source:</b> Retrieve Orders. <b>Target:</b> Transfer Ventilator Settings.	

## Retrieve Orders

Database: <none>, *Stereotype:* «Activity», *Package:* OR to ICU As Is Workflow

Detail: Created on 5/25/2011. Last modified on 5/25/2011.

Notes:

### Connections

Name	Association	Notes
	<b>Source:</b> Monitor Model. <b>Target:</b> Retrieve Orders.	
	<b>Source:</b> Retrieve Orders. <b>Target:</b> Transfer Monitor Settings.	

## Retrieve Orders

Database: <none>, *Stereotype:* «Activity», *Package:* OR to ICU As Is Workflow

Detail: Created on 5/25/2011. Last modified on 5/25/2011.

Notes:

### Connections

Name	Association	Notes
	<b>Source:</b> Device Model.	

Name	Association	Notes
	<b>Target:</b> Retrieve Orders.	
	<b>Source:</b> Retrieve Orders. <b>Target:</b> Transfer Other Device Settings.	

## Submit Device Request

*Database:* <none>, *Stereotype:* «BusinessProcess», *Package:* OR to ICU As Is Workflow

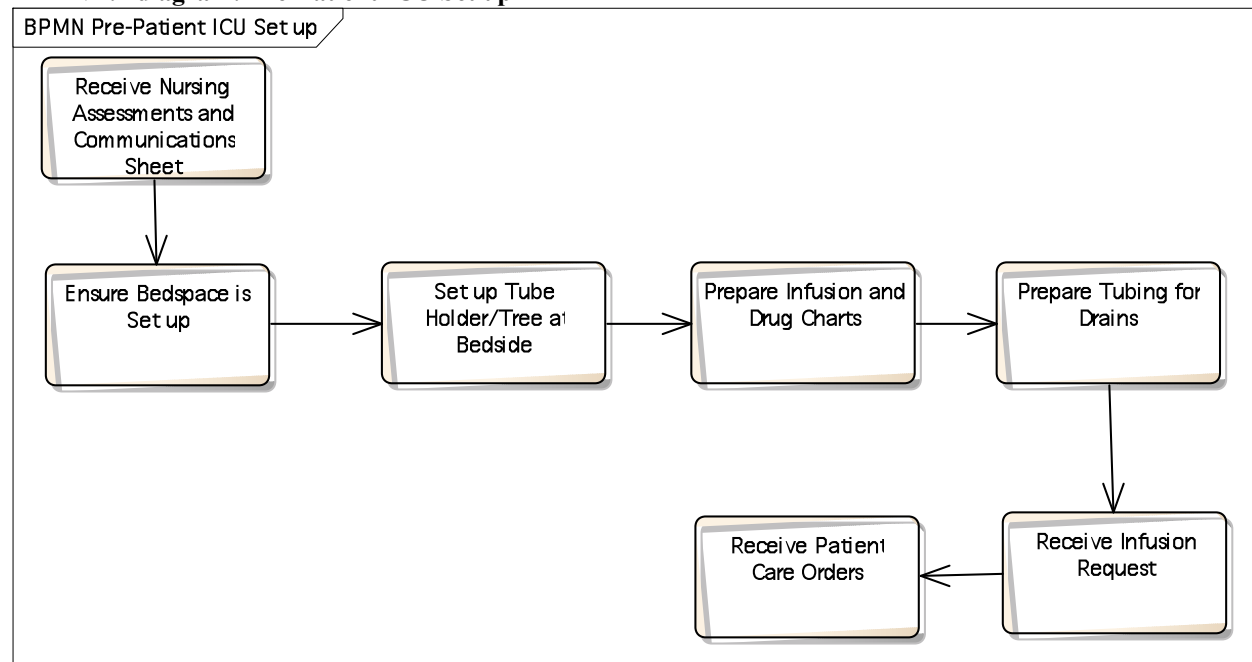
*Detail:* Created on 5/25/2011. Last modified on 5/25/2011.

*Notes:*

### Connections

Name	Association	Notes
	<b>Source:</b> Device Needed. <b>Target:</b> Submit Device Request.	

## BPMN 1.1 diagram: Pre-Patient ICU Set up



## Transfer Monitor Settings

*Database:* <none>, *Stereotype:* «BusinessProcess», *Package:* OR to ICU As Is Workflow

*Detail:* Created on 5/25/2011. Last modified on 5/25/2011.

*Notes:*

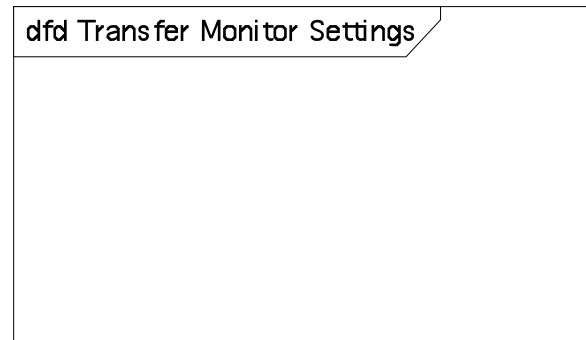
### Connections

Name	Association	Notes
	<b>Source:</b>	



Name	Association	Notes
	Retrieve Orders. <b>Target:</b> Transfer Monitor Settings.	
	<b>Source:</b> Transfer Monitor Settings. <b>Target:</b> A.	

**Data Flow diagram: Transfer Monitor Settings  
TO BE ADDED**



## Transfer Other Device Settings

*Database:* <none>, *Stereotype:* «BusinessProcess», *Package:* OR to ICU As Is Workflow

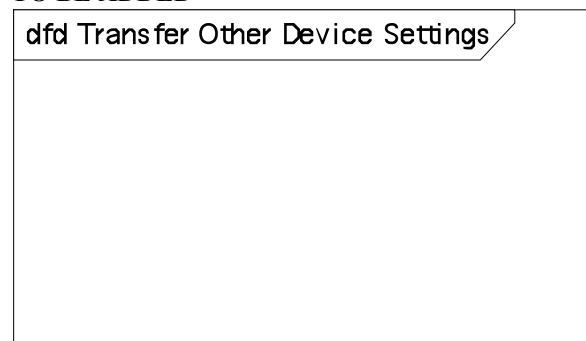
*Detail:* Created on 5/25/2011. Last modified on 5/25/2011.

*Notes:*

**Connections**

Name	Association	Notes
	<b>Source:</b> Retrieve Orders. <b>Target:</b> Transfer Other Device Settings.	
	<b>Source:</b> Transfer Other Device Settings. <b>Target:</b> A.	

**Data Flow diagram: Transfer Other Device Settings  
TO BE ADDED**



## Transfer Pump Settings

*Database:* <none>, *Stereotype:* «BusinessProcess», *Package:* OR to ICU As Is Workflow

*Detail:* Created on 5/25/2011. Last modified on 5/25/2011.

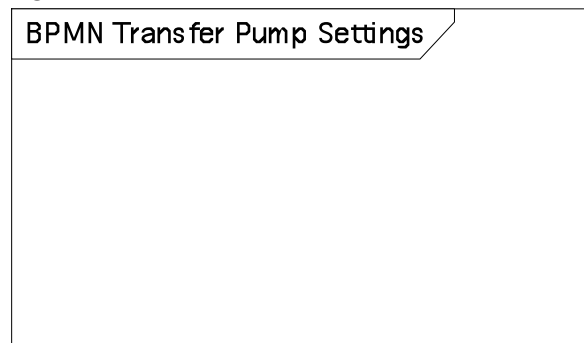
*Notes:*

### Connections

Name	Association	Notes
	<b>Source:</b> Retrieve Orders. <b>Target:</b> Transfer Pump Settings.	
	<b>Source:</b> Transfer Pump Settings. <b>Target:</b> A.	

**BPMN 1.1 diagram: Transfer Pump Settings**

**TO BE ADDED**



## Transfer Ventilator Settings

*Database:* <none>, *Stereotype:* «BusinessProcess», *Package:* OR to ICU As Is Workflow

*Detail:* Created on 5/25/2011. Last modified on 5/25/2011.

*Notes:*

### Connections

Name	Association	Notes
	<b>Source:</b> Retrieve Orders. <b>Target:</b> Transfer Ventilator Settings.	
	<b>Source:</b> Transfer Ventilator Settings. <b>Target:</b> A.	

**BPMN 1.1 diagram: Transfer Ventilator Settings**

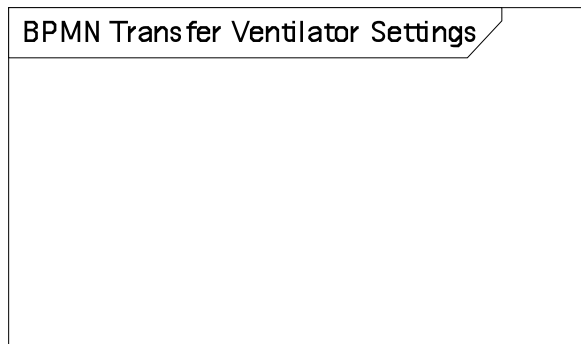


Figure 1 TO BE ADDED

## Device Needed

*Database:* <none>, *Stereotype:* , *Package:* OR to ICU As Is Workflow

*Detail:* Created on 5/25/2011. Last modified on 5/25/2011.

*Notes:*

### Connections

Name	Association	Notes
	<b>Source:</b> Device Needed. <b>Target:</b> Submit Device Request.	
	<b>Source:</b> Device Needed. <b>Target:</b> Infusion Pump.	
	<b>Source:</b> Device Needed. <b>Target:</b> Ventilator.	
	<b>Source:</b> Device Needed. <b>Target:</b> Monitor.	
	<b>Source:</b> Device Needed. <b>Target:</b> Other Device.	
	<b>Source:</b> A. <b>Target:</b> Device Needed.	

## Anesthesia, Transport, ICU

*Database:* <none>, *Stereotype:* «information», *Package:* OR to ICU As Is Workflow

*Detail:* Created on 5/25/2011. Last modified on 5/25/2011.

*Notes:*

### Connections

Name	Association	Notes
	<b>Source:</b> Ventilator. <b>Target:</b> Anesthesia, Transport, ICU.	
	<b>Source:</b> Anesthesia, Transport, ICU. <b>Target:</b> Ventilator Model.	

## Device Model

*Database:* <none>, *Stereotype:* «information», *Package:* OR to ICU As Is Workflow

*Detail:* Created on 5/25/2011. Last modified on 5/25/2011.

*Notes:*

### Connections

Name	Association	Notes
	<b>Source:</b> Dialysis, Compression Sleeve, Other. <b>Target:</b> Device Model.	
	<b>Source:</b> Device Model. <b>Target:</b> Retrieve Orders.	

## Dialysis, Compression Sleeve, Other

*Database:* <none>, *Stereotype:* «information», *Package:* OR to ICU As Is Workflow

*Detail:* Created on 5/25/2011. Last modified on 5/25/2011.

*Notes:*

### Connections

Name	Association	Notes
	<b>Source:</b> Other Device. <b>Target:</b> Dialysis, Compression Sleeve, Other.	
	<b>Source:</b> Dialysis, Compression Sleeve, Other. <b>Target:</b> Device Model.	

## Manual, Volumetric, Syringe

*Database:* <none>, *Stereotype:* «information», *Package:* OR to ICU As Is Workflow

*Detail:* Created on 5/25/2011. Last modified on 5/25/2011.

*Notes:*

### Connections

Name	Association	Notes
	<b>Source:</b> Infusion Pump. <b>Target:</b> Manual, Volumetric, Syringe.	

Name	Association	Notes
	<b>Source:</b> Manual, Volumetric, Syringe. <b>Target:</b> Pump Model.	

## Monitor Model

*Database:* <none>, *Stereotype:* «information», *Package:* OR to ICU As Is Workflow

*Detail:* Created on 5/25/2011. Last modified on 5/25/2011.

*Notes:*

### Connections

Name	Association	Notes
	<b>Source:</b> Multi-parameter, Single-parameter. <b>Target:</b> Monitor Model.	
	<b>Source:</b> Monitor Model. <b>Target:</b> Retrieve Orders.	

## Multi-parameter, Single-parameter

*Database:* <none>, *Stereotype:* «information», *Package:* OR to ICU As Is Workflow

*Detail:* Created on 5/25/2011. Last modified on 5/25/2011.

*Notes:*

### Connections

Name	Association	Notes
	<b>Source:</b> Monitor. <b>Target:</b> Multi-parameter, Single-parameter.	
	<b>Source:</b> Multi-parameter, Single-parameter. <b>Target:</b> Monitor Model.	

## Pump Model

*Database:* <none>, *Stereotype:* «information», *Package:* OR to ICU As Is Workflow

*Detail:* Created on 5/25/2011. Last modified on 5/25/2011.

*Notes:*

### Connections

Name	Association	Notes
	<b>Source:</b> Manual, Volumetric, Syringe. <b>Target:</b> Pump Model.	
	<b>Source:</b> Pump Model. <b>Target:</b> Retrieve Orders.	

## Ventilator Model

*Database:* <none>, *Stereotype:* «information», *Package:* OR to ICU As Is Workflow  
*Detail:* Created on 5/25/2011. Last modified on 5/25/2011.  
*Notes:*

### Connections

Name	Association	Notes
	<b>Source:</b> Anesthesia, Transport, ICU. <b>Target:</b> Ventilator Model.	
	<b>Source:</b> Ventilator Model. <b>Target:</b> Retrieve Orders.	

## A

*Database:* <none>, *Stereotype:* , *Package:* OR to ICU As Is Workflow  
*Detail:* Created on 5/25/2011. Last modified on 5/25/2011.  
*Notes:*

### Connections

Name	Association	Notes
	<b>Source:</b> Transfer Pump Settings. <b>Target:</b> A.	
	<b>Source:</b> Transfer Ventilator Settings. <b>Target:</b> A.	
	<b>Source:</b> Transfer Monitor Settings. <b>Target:</b> A.	
	<b>Source:</b> Transfer Other Device Settings. <b>Target:</b> A.	

## A

*Database:* <none>, *Stereotype:* , *Package:* OR to ICU As Is Workflow  
*Detail:* Created on 5/25/2011. Last modified on 5/25/2011.  
*Notes:*

### Connections

Name	Association	Notes
	<b>Source:</b> A. <b>Target:</b> Device Needed.	

## Begin General Care

*Database:* <none>, *Stereotype:* «EndEvent», *Package:* OR to ICU As Is Workflow  
*Detail:* Created on 7/27/2011. Last modified on 7/27/2011.  
*Notes:*

#### Connections

Name	Association	Notes
	<b>Source:</b> End Transfer. <b>Target:</b> Begin General Care.	

## ICU Staff

*Database:* <none>, *Stereotype:* «StartEvent», *Package:* OR to ICU As Is Workflow  
*Detail:* Created on 2/8/2012. Last modified on 2/8/2012.  
*Notes:*

#### Connections

Name	Association	Notes
	<b>Source:</b> ICU Staff. <b>Target:</b> manualProcess: Pre-Patient ICU Set up.	
	<b>Source:</b> <anonymous>. <b>Target:</b> ICU Staff.	

## Patient in ICU

*Database:* <none>, *Stereotype:* «IntermediateEvent», *Package:* OR to ICU As Is Workflow  
*Detail:* Created on 7/27/2011. Last modified on 7/27/2011.  
*Notes:*

#### Connections

Name	Association	Notes
	<b>Source:</b> manualProcess: Patient in Transport. <b>Target:</b> Patient in ICU.	
	<b>Source:</b> Patient in ICU. <b>Target:</b> manualProcess: Post Patient ICU Set-up.	

## Patient in OR

*Database:* <none>, *Stereotype:* «StartEvent», *Package:* OR to ICU As Is Workflow  
*Detail:* Created on 5/25/2011. Last modified on 5/25/2011.  
*Notes:*

#### Connections

Name	Association	Notes
	<b>Source:</b> Patient in OR. <b>Target:</b> manualProcess: Transfer patient to ICU.	

Name	Association	Notes
	<b>Source:</b> Patient in OR. <b>Target:</b> getISData(patientID, history).	
	<b>Source:</b> <anonymous>. <b>Target:</b> Patient in OR.	

## Arterial Lines Connected

Database: Java, *Stereotype:* , *Package:* OR to ICU As Is Workflow

Detail: Created on 5/25/2011. Last modified on 7/27/2011.

Notes:

### Connections

Name	Association	Notes
	<b>Source:</b> Arterial Lines Connected. <b>Target:</b> Right, Left.	
	<b>Source:</b> Arterial Lines Connected. <b>Target:</b> Radial, Femoral.	

## Blood Products

Database: Java, *Stereotype:* , *Package:* OR to ICU As Is Workflow

Detail: Created on 5/25/2011. Last modified on 7/27/2011.

Notes:

### Connections

Name	Association	Notes
	<b>Source:</b> Blood Products. <b>Target:</b> Packed Red Blood Cells (PRBC), Fresh Frozen Plasmid (FFP), Platelets (Plt.).	
	<b>Source:</b> Blood Products. <b>Target:</b> Amount Needed (# of units).	
Yes	<b>Source:</b> Blood Product Needed. <b>Target:</b> Blood Products.	

## Central Venous Lines Connected

Database: Java, *Stereotype:* , *Package:* OR to ICU As Is Workflow

Detail: Created on 5/25/2011. Last modified on 7/27/2011.

Notes:

### Connections

Name	Association	Notes
------	-------------	-------



Name	Association	Notes
	<b>Source:</b> Central Venous Lines Connected. <b>Target:</b> Right, Left.	
	<b>Source:</b> Central Venous Lines Connected. <b>Target:</b> Internal Jugular (IJ), Subclavian (SC).	

## Connected Disposable

*Database:* Java, *Stereotype:* , *Package:* OR to ICU As Is Workflow

*Detail:* Created on 5/25/2011. Last modified on 7/27/2011.

*Notes:*

### Connections

Name	Association	Notes
	<b>Source:</b> Connected Disposable. <b>Target:</b> Chest Tube, Epidural, Ventric, Spinal Drain, Bolts, Other.	
	<b>Source:</b> Connected Disposable. <b>Target:</b> Right, Left.	
	<b>Source:</b> Connected Disposable. <b>Target:</b> 1, 2, 3, n.	
	<b>Source:</b> Connected Disposable. <b>Target:</b> Used, Unused.	
	<b>Source:</b> Connected Disposable. <b>Target:</b> Time device was put in.	
Yes	<b>Source:</b> Another Disposable Connected?. <b>Target:</b> Connected Disposable.	

## DNR Status

*Database:* Java, *Stereotype:* , *Package:* OR to ICU As Is Workflow

*Detail:* Created on 2/8/2012. Last modified on 2/8/2012.

*Notes:*

### Connections

Name	Association	Notes
	<b>Source:</b> DNR Status. <b>Target:</b> Family Contact or Representative.	
	<b>Source:</b>	

Name	Association	Notes
	Provider. <b>Target:</b> DNR Status.	
	<b>Source:</b> DNR Status. <b>Target:</b> Status.	

## Drugs

Database: Java, *Stereotype:* , *Package:* OR to ICU As Is Workflow

Detail: Created on 5/25/2011. Last modified on 5/25/2011.

Notes:

### Connections

Name	Association	Notes
	<b>Source:</b> Support Drugs. <b>Target:</b> Drugs.	
	<b>Source:</b> Drugs. <b>Target:</b> Sedation, Intubation, Vasoactive, IV fluids, Antibiotics.	

## Family Contact or Representative

Database: Java, *Stereotype:* , *Package:* OR to ICU As Is Workflow

Detail: Created on 2/8/2012. Last modified on 2/8/2012.

Notes:

### Connections

Name	Association	Notes
	<b>Source:</b> Family Contact or Representative. <b>Target:</b> Identify Diet Restrictions.	
	<b>Source:</b> DNR Status. <b>Target:</b> Family Contact or Representative.	
	<b>Source:</b> Family Contact or Representative. <b>Target:</b> Name, Phone Number, Relation.	

## Identify Diet Restrictions

Database: Java, *Stereotype:* , *Package:* OR to ICU As Is Workflow

Detail: Created on 5/25/2011. Last modified on 5/25/2011.

Notes:

### Connections

Name	Association	Notes
	<b>Source:</b> Identify Diet Restrictions.	

Name	Association	Notes
	<b>Target:</b> Previous Medical History.	
	<b>Source:</b> Family Contact or Representative. <b>Target:</b> Identify Diet Restrictions.	

## InformationItem1

*Database:* Java, *Stereotype:* , *Package:* OR to ICU As Is Workflow

*Detail:* Created on 2/8/2012. Last modified on 2/8/2012.

*Notes:*

## Infusion Pump

*Database:* Java, *Stereotype:* , *Package:* OR to ICU As Is Workflow

*Detail:* Created on 5/25/2011. Last modified on 5/25/2011.

*Notes:*

### Connections

Name	Association	Notes
	<b>Source:</b> Infusion Pump. <b>Target:</b> Manual, Volumetric, Syringe.	
	<b>Source:</b> Device Needed. <b>Target:</b> Infusion Pump.	

## Meds/Drips

*Database:* Java, *Stereotype:* , *Package:* OR to ICU As Is Workflow

*Detail:* Created on 5/25/2011. Last modified on 7/27/2011.

*Notes:*

### Connections

Name	Association	Notes
	<b>Source:</b> Meds/Drips. <b>Target:</b> Drug.	
	<b>Source:</b> Meds/Drips. <b>Target:</b> Amount Needed (# of units).	
Yes	<b>Source:</b> IV Medication Needed. <b>Target:</b> Meds/Drips.	

## Monitor

*Database:* Java, *Stereotype:* , *Package:* OR to ICU As Is Workflow

*Detail:* Created on 5/25/2011. Last modified on 5/25/2011.

*Notes:*

### Connections

Name	Association	Notes
	<b>Source:</b> Monitor. <b>Target:</b> Multi-parameter, Single-parameter.	
	<b>Source:</b> Device Needed. <b>Target:</b> Monitor.	

## On Ventilator

*Database:* <none>, *Stereotype:* «Gateway», *Package:* OR to ICU As Is Workflow

*Detail:* Created on 6/2/2011. Last modified on 6/2/2011.

*Notes:*

### Connections

Name	Association	Notes
No	<b>Source:</b> On Ventilator. <b>Target:</b> X-ray Procedure.	
Yes	<b>Source:</b> X-ray Needed. <b>Target:</b> On Ventilator.	
Yes	<b>Source:</b> On Ventilator. <b>Target:</b> X-ray Vent Procedure.	

## Other Device

*Database:* Java, *Stereotype:* , *Package:* OR to ICU As Is Workflow

*Detail:* Created on 5/25/2011. Last modified on 5/25/2011.

*Notes:*

### Connections

Name	Association	Notes
	<b>Source:</b> Other Device. <b>Target:</b> Dialysis, Compression Sleeve, Other.	
	<b>Source:</b> Device Needed. <b>Target:</b> Other Device.	

## PIC

*Database:* Java, *Stereotype:* , *Package:* OR to ICU As Is Workflow

*Detail:* Created on 5/25/2011. Last modified on 7/27/2011.

*Notes:*

### Connections

Name	Association	Notes
	<b>Source:</b> PIC. <b>Target:</b> Right, Left.	

## Past Hospitalization

*Database:* Java, *Stereotype:* , *Package:* OR to ICU As Is Workflow

*Detail:* Created on 5/25/2011. Last modified on 5/25/2011.

*Notes:*

### Connections

Name	Association	Notes
	<b>Source:</b> Previous Medical History. <b>Target:</b> Past Hospitalization.	
	<b>Source:</b> Past Hospitalization. <b>Target:</b> Primary Language English?.	
	<b>Source:</b> Past Hospitalization. <b>Target:</b> Past Hospitalizations.	

## Patient Consent Forms

*Database:* Java, *Stereotype:* , *Package:* OR to ICU As Is Workflow

*Detail:* Created on 5/25/2011. Last modified on 5/25/2011.

*Notes:*

### Connections

Name	Association	Notes
	<b>Source:</b> Primary Language English?. <b>Target:</b> Patient Consent Forms.	
	<b>Source:</b> Find Translator. <b>Target:</b> Patient Consent Forms.	
	<b>Source:</b> Patient Consent Forms. <b>Target:</b> Smoker.	
	<b>Source:</b> Patient Consent Forms. <b>Target:</b> Surgery/Procedural, Anesthesia/Sedation, Blood, Sterilization, Advance Directive, Belmont (Research).	

## Patient Identification Information

*Database:* Java, *Stereotype:* , *Package:* OR to ICU As Is Workflow

*Detail:* Created on 5/25/2011. Last modified on 5/25/2011.

Notes:

#### Connections

Name	Association	Notes
	<b>Source:</b> Patient Identification Information. <b>Target:</b> Name, Date of Birth, Sex, Weight, Height.	
	<b>Source:</b> Patient Identification Information. <b>Target:</b> Provider.	

## Previous Medical History

Database: Java, *Stereotype:* , *Package:* OR to ICU As Is Workflow

Detail: Created on 5/25/2011. Last modified on 5/25/2011.

Notes:

#### Connections

Name	Association	Notes
	<b>Source:</b> Identify Diet Restrictions. <b>Target:</b> Previous Medical History.	
	<b>Source:</b> Previous Medical History. <b>Target:</b> Past Hospitalization.	
	<b>Source:</b> Previous Medical History. <b>Target:</b> Seizures, Hypertension, Myocardial Infarction, Congestive Heart Failure, Cerebrovascular Accident, Transient Ischemic Attack, Cardiac Disease, Renal Disease, Liver Disease, Infectious Diseases, Chronic Obstructive Pulmonary Disease, Diabetes, Asthma, Cance.	

## Provider

Database: Java, *Stereotype:* , *Package:* OR to ICU As Is Workflow

Detail: Created on 2/8/2012. Last modified on 2/8/2012.

Notes:

#### Connections

Name	Association	Notes
	<b>Source:</b> Provider. <b>Target:</b> Physician, Anesthesiologist, Surgeon, etc. .	
	<b>Source:</b> Patient Identification Information. <b>Target:</b> Provider.	
	<b>Source:</b> Provider.	

Name	Association	Notes
	<b>Target:</b> DNR Status.	

## Pulmonary Artery Lines Connected

Database: Java, *Stereotype:* , *Package:* OR to ICU As Is Workflow

Detail: Created on 5/25/2011. Last modified on 7/27/2011.

Notes:

### Connections

Name	Association	Notes
	<b>Source:</b> Pulmonary Artery Lines Connected. <b>Target:</b> Right, Left.	
	<b>Source:</b> Pulmonary Artery Lines Connected. <b>Target:</b> Internal Jugular (IJ), Subclavian (SC).	
	<b>Source:</b> Pulmonary Artery Lines Connected. <b>Target:</b> Paced, Not Paced.	

## Ventilator

Database: Java, *Stereotype:* , *Package:* OR to ICU As Is Workflow

Detail: Created on 5/25/2011. Last modified on 5/25/2011.

Notes:

### Connections

Name	Association	Notes
	<b>Source:</b> Ventilator. <b>Target:</b> Anesthesia, Transport, ICU.	
	<b>Source:</b> Device Needed. <b>Target:</b> Ventilator.	

## Vitals

Database: Java, *Stereotype:* , *Package:* OR to ICU As Is Workflow

Detail: Created on 5/25/2011. Last modified on 5/25/2011.

Notes:

### Connections

Name	Association	Notes
	<b>Source:</b> Monitor Patient. <b>Target:</b> Vitals.	
	<b>Source:</b> Vitals. <b>Target:</b>	

Name	Association	Notes
	ECG, RR< IBP< NIBP, O2 Sat., EtCO2.	

## X-ray Needed

*Database:* <none>, *Stereotype:* «Gateway», *Package:* OR to ICU As Is Workflow

*Detail:* Created on 6/2/2011. Last modified on 6/2/2011.

*Notes:*

### Connections

Name	Association	Notes
	<b>Source:</b> manualProcess: Clinical Examination. <b>Target:</b> X-ray Needed.	
No	<b>Source:</b> X-ray Needed. <b>Target:</b> End Transfer.	
Yes	<b>Source:</b> X-ray Needed. <b>Target:</b> On Ventilator.	

## getISData(patientID); getOrders(patientID)

*Database:* Java, *Stereotype:* , *Package:* OR to ICU As Is Workflow

*Detail:* Created on 5/25/2011. Last modified on 7/27/2011.

*Notes:* Transmit Patient Information to ICU

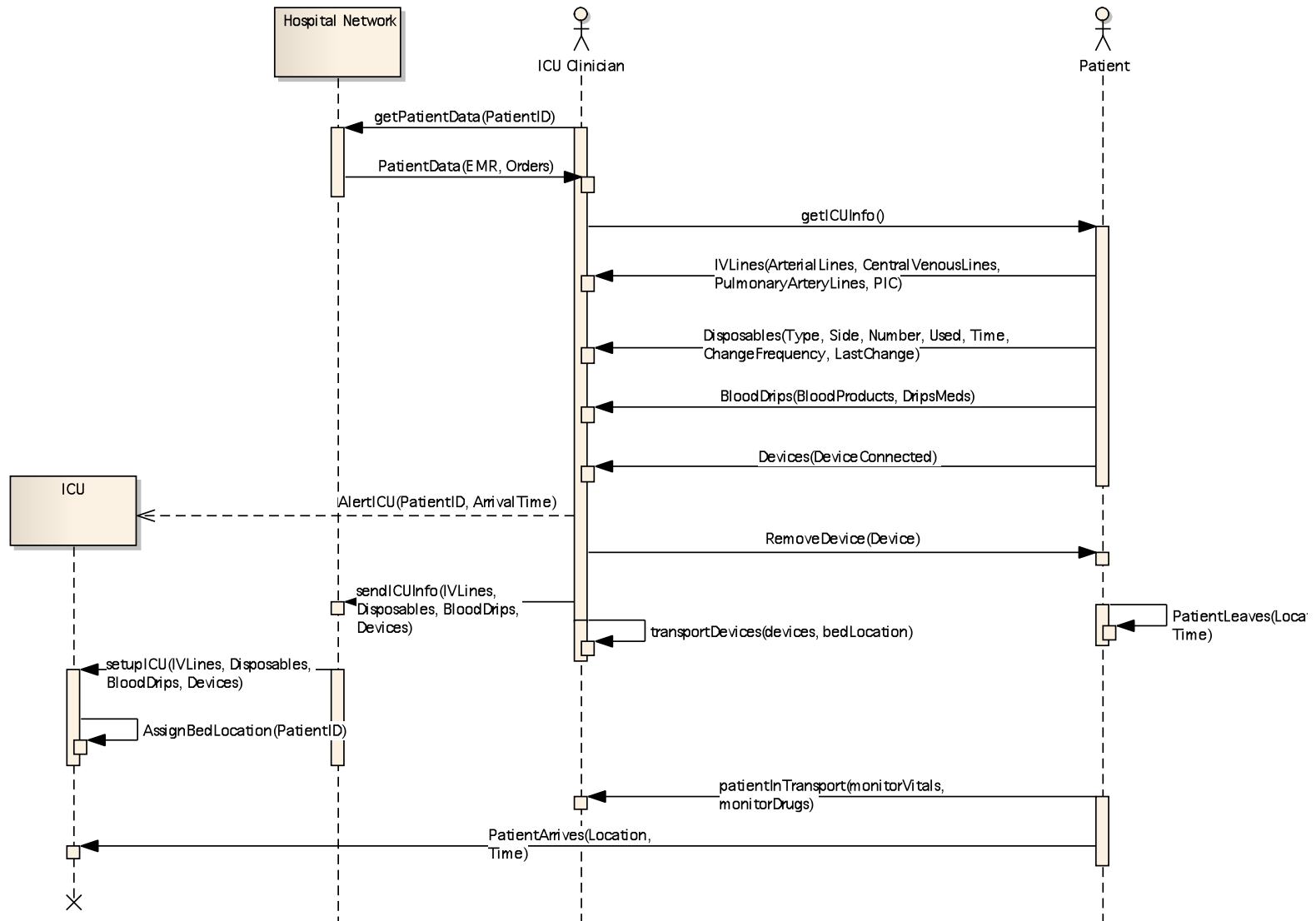
### Connections

Name	Association	Notes
	<b>Source:</b> manualProcess: Pre-Patient ICU Set up. <b>Target:</b> getISData(patientID); getOrders(patientID).	
	<b>Source:</b> getISData(patientID); getOrders(patientID). <b>Target:</b> manualProcess: Nurse Assigns ICU bed Location.	



## A. OR to Pre-Patient Setup Sequence Diagram

OR to ICU Pre-Patient Setup



## B. Transport to ICU Post-Patient Setup Sequence Diagram

Transport to ICU Post-Patient Setup

