

---

# **Clinical Scenario #1 Patient Controlled Analgesia**

## **Part 2: Workflow Diagrams** **Working Draft Version 5.1**

# **Quantum Medical Device Interoperability (QMDI) Project**

PI: Julian M. Goldman, MD

Funded by  
National Institute of Biomedical Imaging & Bioengineering

Prepared by DocBox Inc.

and

Medical Device Plug-and-Play (MD PnP) Program  
CIMIT / Massachusetts General Hospital

Current versions of this and related documents can be found at <http://mdpnp.org>

August 2012

This work is licensed under a Creative Commons Attribution-ShareAlike 3.0 Unported License

## Contents

Clinical Workflow.....	3
Diagram: Infusion Therapy .....	4
Diagram: IV Assessment .....	5
Diagram: 5R Drug Administration.....	6
Diagram: Monitor Patient.....	7
Diagram: Periodic Nursing Check .....	8
Diagram: Set up Infusion .....	9
Diagram: Set up Patient Monitoring.....	10

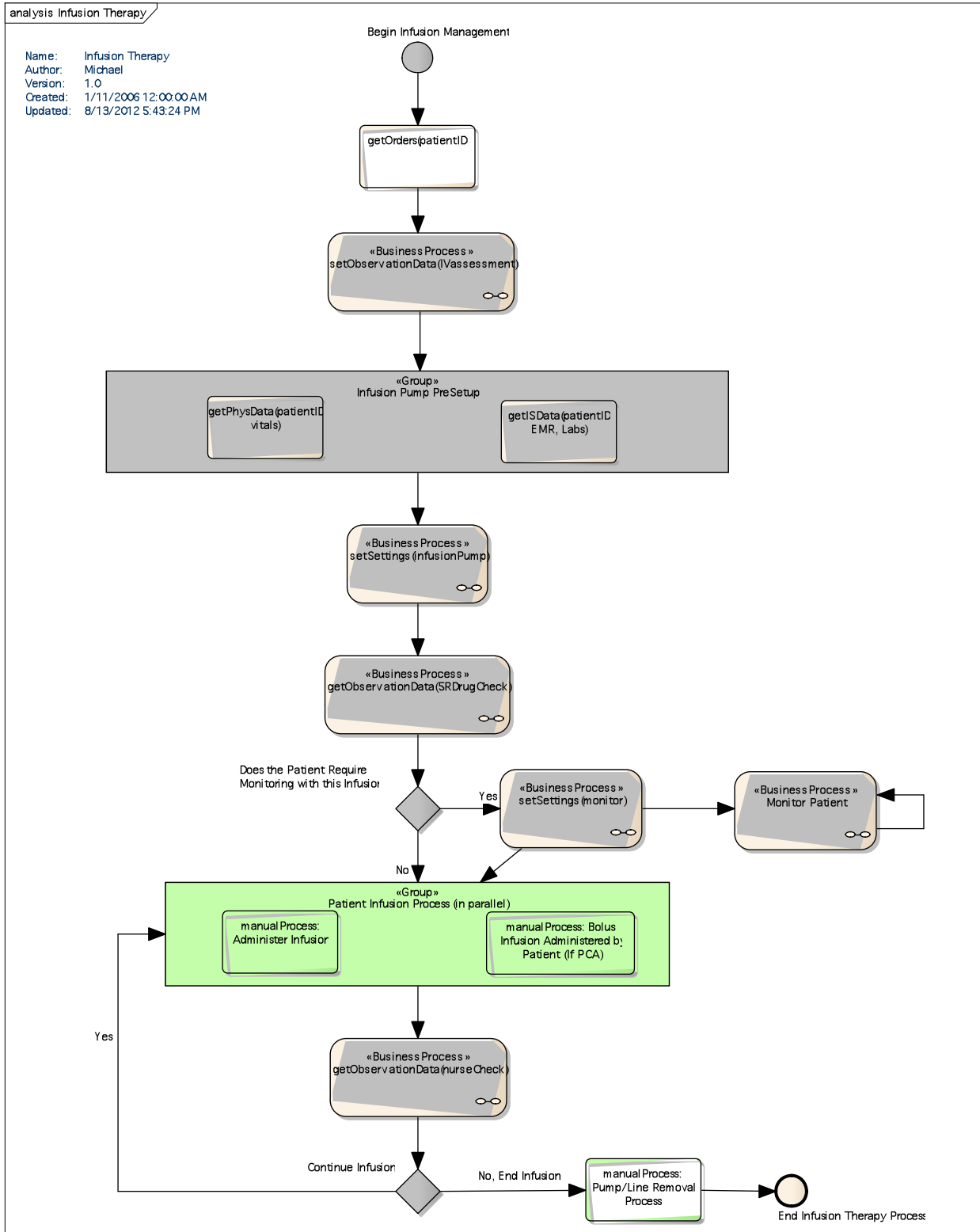
## Clinical Workflow

This PCA Safety Interlock workflow has served as a prototype to refine our clinical scenario requirements analysis methodology. This work began in 2005 and was ultimately published in Annex B of the ASTM F2769-09 (ICE) standard. Originally these workflows were documented in Microsoft Visio, then in Altova UModel, but neither tool was a good fit. The depictions included in this series of documents were created in Enterprise Architect.

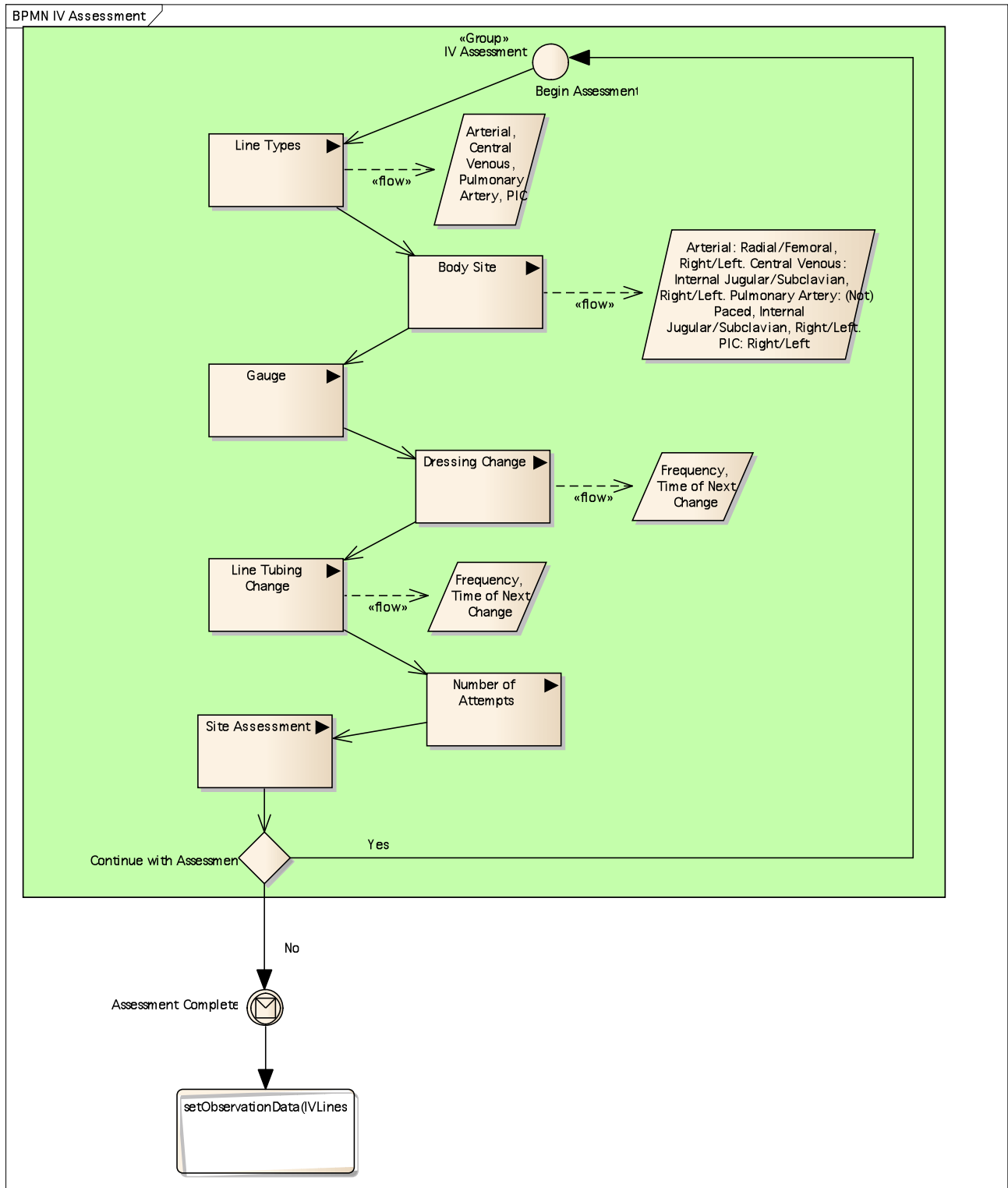
### Key for Workflows:

- Diagram Boxes in Green signal a Manual Clinical Process (i.e. a nurse hangs an IV bag)
- Diagram Boxes in Red signal that a Comparison between two data points is required (compare dose on pump with dose in order)
- A ∞ at the bottom of a workflow block signals that there is an additional page of workflow.

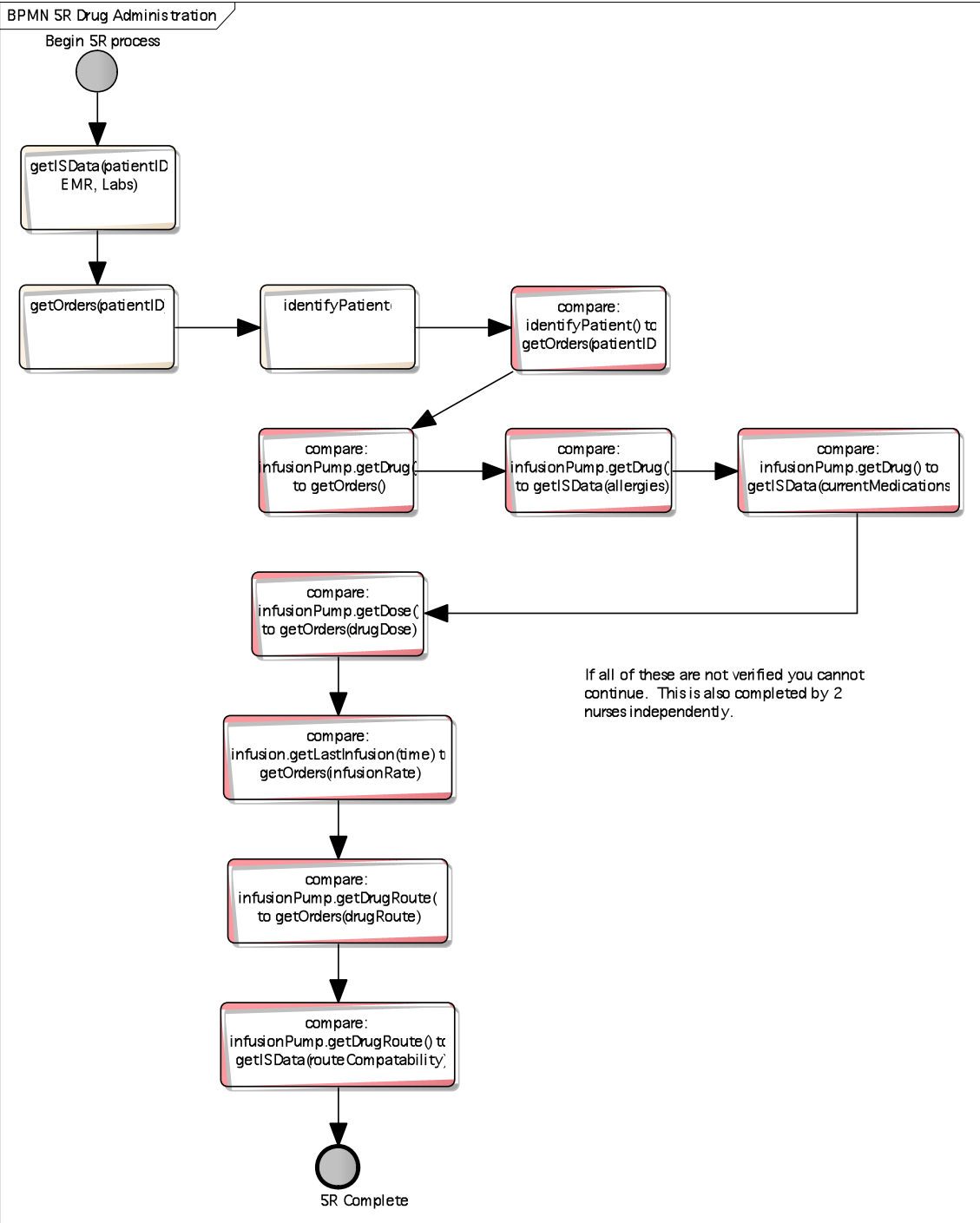
# Diagram: Infusion Therapy



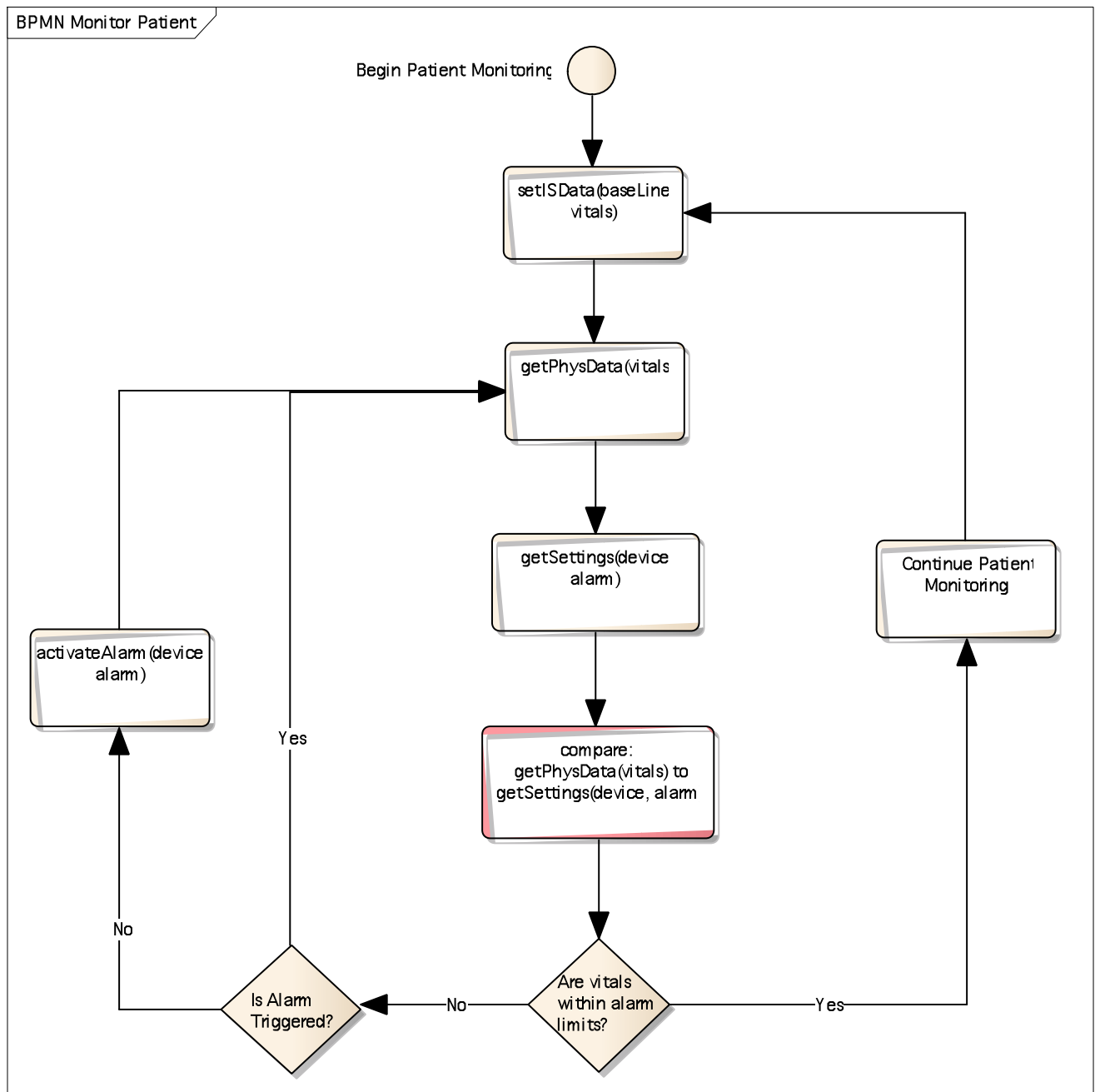
# Diagram: IV Assessment



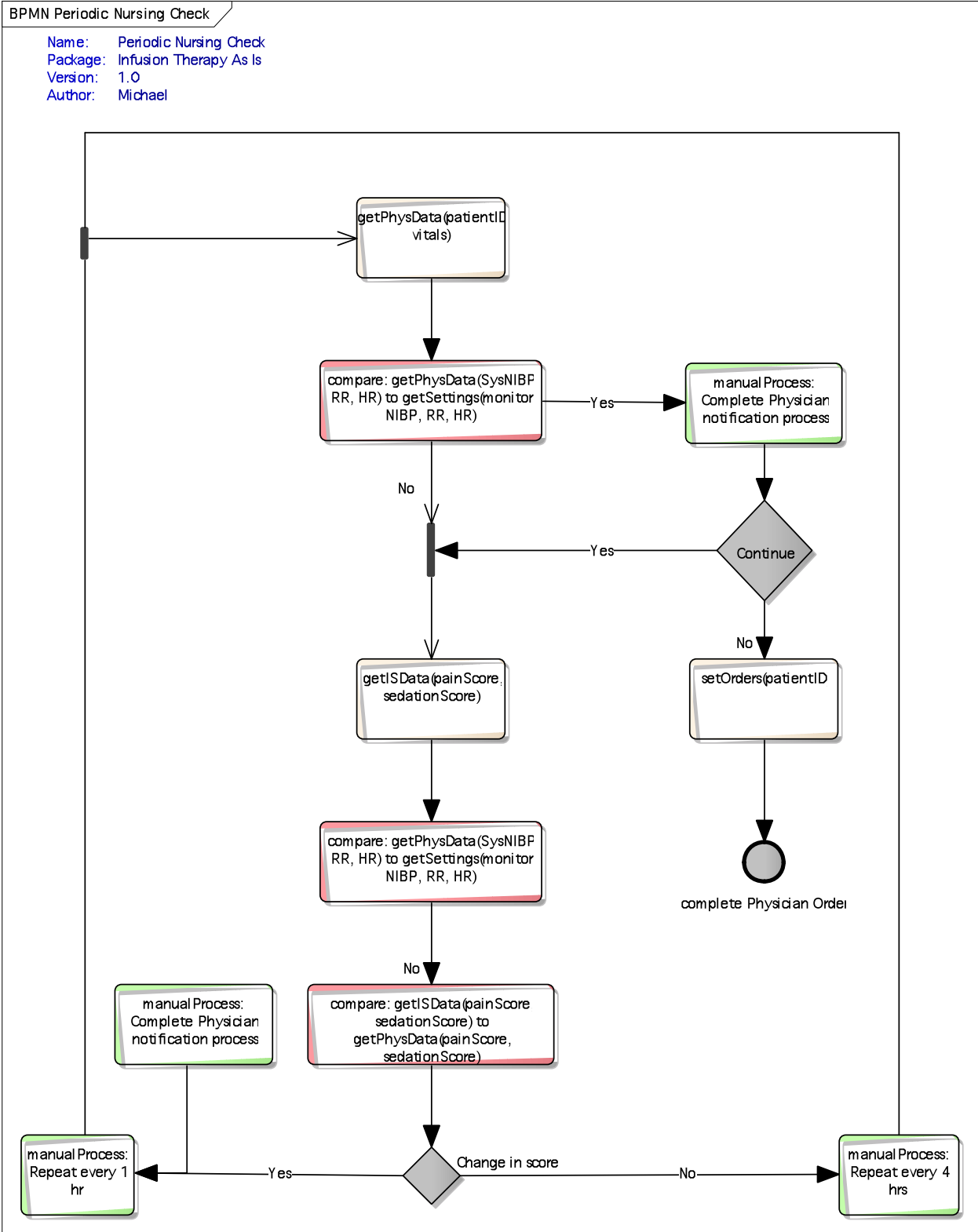
# Diagram: 5R Drug Administration



## Diagram: Monitor Patient

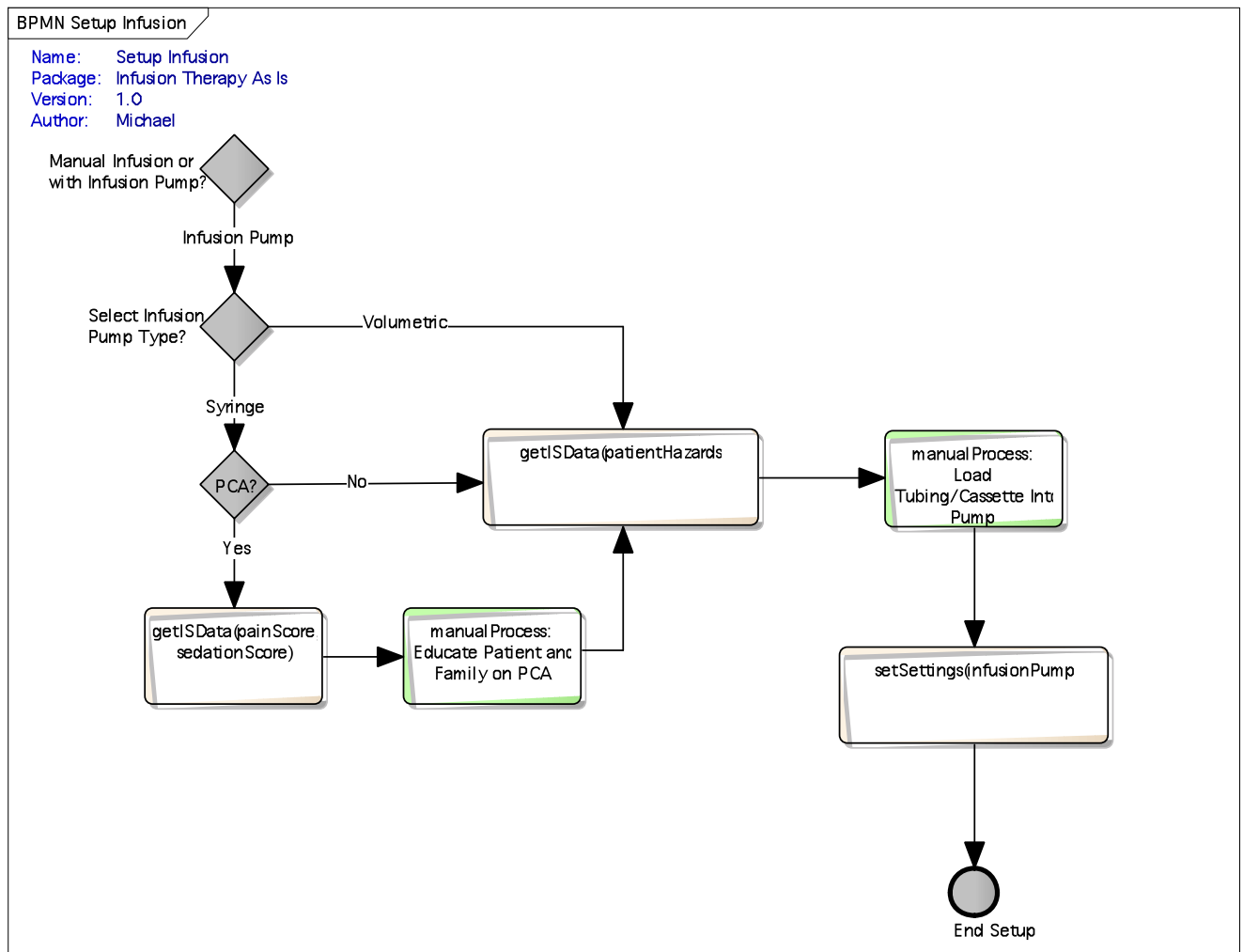


# Diagram: Periodic Nursing Check





## Diagram: Set up Infusion



## Diagram: Set up Patient Monitoring

