

The Storyteller's Treehouse

Teacher's
Guide



A decorative wavy green banner with leaves and sparkles, positioned at the bottom of the page.



One morning, a leaf drifted down from the tallest tree in the forest.
When you picked it up... it whispered your name.

Was it a message, a map, or a warning?

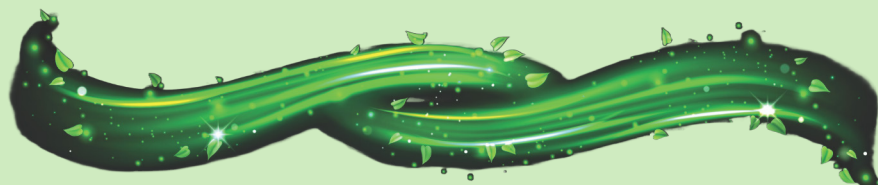
Start your story below: Tip: "The leaf drifted down... and when I touched it, it whispered..."
Let your imagination carry you. The forest is listening. ~

This image shows a single sheet of white paper with horizontal blue or grey ruling lines. The lines are evenly spaced and run across the width of the page. There are approximately 20 lines visible. The paper has a slightly textured appearance and is set against a dark background.

Ollie's Tip: Sometimes the quietest whispers carry the most powerful stories.



Draw what the whispering leaf looked like:





Teacher's Companion Guide

For: The Leaf That Whispered – A Storytelling Prompt

Overview:

In this gentle, imagination-sparking activity, students encounter a leaf that whispers their name. This prompt encourages curiosity, sensory engagement, and magical thinking through descriptive narrative.

Learning Objectives:

- Engage in creative narrative writing through imaginative prompts.
- Practice character and setting development using sensory details.
- Use storytelling to explore decision-making and plot progression.
- Strengthen visualization skills and emotional literacy.

Tips for Classroom Use:

- Read the prompt aloud as a group and allow time for reflection before writing.
- Encourage students to imagine where the leaf came from and who sent it.
- Use the drawing box to let students visualize their leaf or the journey it inspires.
- Create a classroom bulletin board titled 'Whispers from the Tree' with their stories and art.

Optional Extensions:

- Create a second part of the story based on a trail of whispering leaves.
- Invite students to turn their story into a short illustrated mini-book.





Add Student's Name
to the 