

A close-up photograph of a dentist performing a procedure on a patient. The dentist is using a red dental handpiece, which is illuminated by a bright light. The patient's face is visible in the foreground, looking up at the procedure. The background is blurred, showing a clinical setting.

TERAFLOAT®

POWER DENTISTRY 2022

Terafloat®
Designed and manufactured by
Swissvet Veterinary Products



© TERAFLOAT 2022

2218 N Central St
Knoxville, TN 37917 (USA)
+1 865 540 8830

Industriepark 201
78244 Gottmadingen (DE)
+49 7731 793 7707

WWW.TERAFLOAT.COM

6/2022 - US-EN-LET

LIGHTWEIGHT PERFECTION

The concept of the Terafloat is simple: a lightweight instrument with lithium batteries and a range of interchangeable shafts with unique features. The combination of modern materials, a smart design and Swiss quality makes the Terafloat the perfect instrument for state-of-the-art equine dentistry treatment of the 21st century. Since its introduction in 2015, the Terafloat has been a tremendous success among equine veterinarians and it is equally liked by horse owner and trainers.

ECO

LED

FLX

ONE NAME - THREE LINES:

ECO, LED AND FLX

Terafloat offers three lines of power instruments: The ECO line, the LED line and the FLX line. Each line has a wide range of instrument sets from basic to professional, to satisfy every budget and every treatment approach. Together they meet the demands from the general large animal practitioner to the equine dentistry specialist.

Assembly and service is performed in several locations around the world. The Terafloat is distributed in over 20 countries. Swiss quality and a one year warranty are standard.

FOR VETS FROM A VET

The Terafloat was developed by the board certified Swiss veterinarian Dr. Ruedi Steiger, DACVIM. He moved to the US for a residency program in equine medicine but found his true passion in equine dentistry. Dr. Steiger owns Swissvet and he is still practicing and teaching equine dentistry.

Dr. Steiger combined 20+ years of dentistry experience with Swiss engineering to design his version of a perfect equine Powerfloat. The high precision parts for the Terafloat are machined in Switzerland exclusively for Swissvet.



HOW TO CHOOSE A TERAFLOAT

1. Select a model line: ECO, LED or FLX
2. Pick the Turnflex shafts: Disc shaft and/or Apple core shaft
3. Consider Specialty shafts: Pony and/or Incisor shaft
4. Find the set that meets your selection



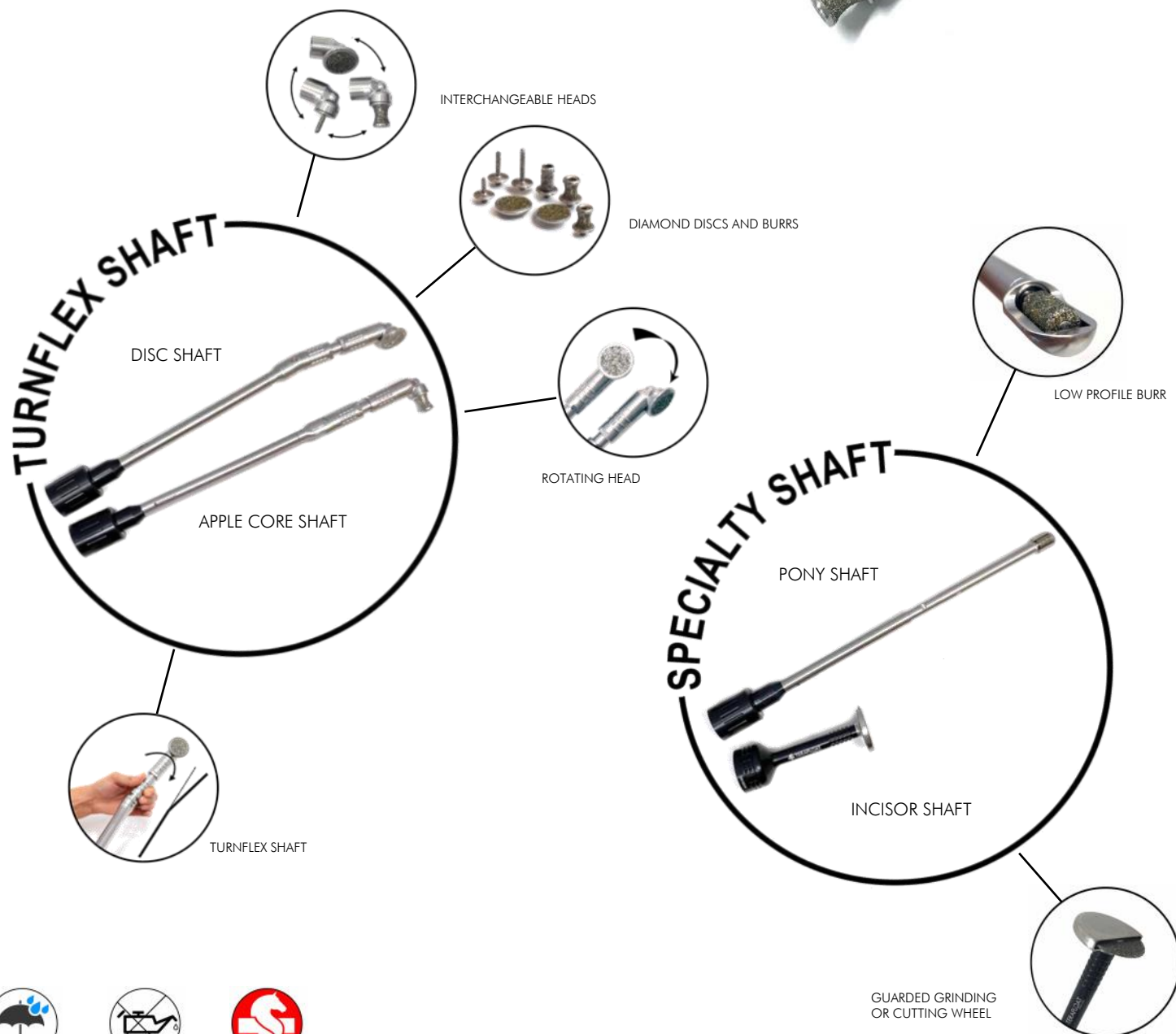
TERAFLOAT® ECO

STURDY AND AFFORDABLE

The Terafloat ECO line features:

- Variable speed
- Trigger locking switch
- Electronic shut-off protection
- Lithium batteries 3Ah
- Battery charge indicator lights
- Removable shafts
- Turnflex and Specialty shafts

TERAFLOAT ECO STANDARD SET
WITH TURNFLEX SHAFTS
(DISC AND APPLE CORE)



WATER RESISTANT - MAINTENANCE FREE - SWISS MADE

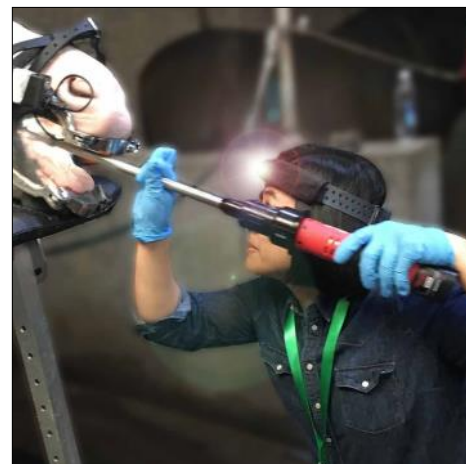
The Terafloat ECO line is amazing for everyday dentistry. It offers all Terafloat features but without the LED illumination. It is a sturdy and versatile solution for a great price.

The two turnflex shafts have the Turnflex mechanism to quickly switch from a straight or curved position allowing the perfect positioning of the grinding head. The apple core shaft and the disc shaft are identical, but each use a different grinding head. The diamond coated Terafloat burs and discs are Swiss made and they are interchangeable. The Turnflex shafts are efficient and produce precise dental work.

The two specialty shafts, the pony shaft and the incisor shaft, use the same motor and they are easily interchanged. The pony shaft has a low profile guarded burr that reaches tight spaces and the incisor shaft has a large cutting or grinding wheel which allows for efficient and precise incisor work.

The ECO line is great for the general practitioner that wants a modern instrument with smart features that allows detailed equine dentistry procedures at an affordable price. When upgrading to an advanced or professional set, all corners of dentistry are covered with the ECO line.

Several Terafloat Eco sets are available. The components are modular and interchangeable, making it easy to upgrade from one set to the next.



T-0036G: TERAFLOAT ECO BASIC SET

(1) Motor EF (T-0103), (2) Batteries 3.0Ah (T-0122), (1) 1-bay Charger 120V (T-0124), (1) Turnflex Shaft ECO with Rotary Disc T3-C10 (T-0367), Accessory Bag complete (T-1268), Long Case (T-0303).



T-0039G: TERAFLOAT ECO BASIC PLUS SET

(1) Motor EF (T-0103), (2) Batteries 3.0Ah (T-0122), (1) 1-bay Charger 120V (T-0124), (1) Turnflex Shaft ECO with Rotary Disc T3-C10 (T-0367), (1) head with Apple Core Burr A2-M8 (T-0187), Accessory Bag complete (T-1268), Long Case (T-0303).



T-0042G: TERAFLOAT ECO STANDARD SET

(2) Motors EF (T-0103), (3) Batteries 3.0Ah (T-0122), (1) 1-bay Charger 120V (T-0124), (1) Turnflex Shaft ECO with Rotary Disc T3-C10 (T-0367), (1) Turnflex Shaft ECO with Apple Core Burr A2-M8 (T-0365), Accessory Bag complete (T-1268), Long Case (T-0303).



T-0060G: TERAFLOAT ECO ADVANCED SET (INCISOR)

(2) Motors EF (T-0103), (3) Batteries 3.0Ah (T-0122), (1) 1-bay Charger 120V (T-0124), (1) Turnflex Shaft ECO with Rotary Disc T3-C10 (T-0367), Turnflex Shaft ECO with Apple Core Burr A2-M8 (T-0365), (1) Incisor Shaft (T-0159), Accessory Bag complete (T-1268), Long Case (T-0303).



T-0001G: TERAFLOAT ECO ADVANCED SET (PONY)

(2) Motors EF (T-0103), (3) Batteries 3.0Ah (T-0122), (1) 1-bay Charger 120V (T-0124), (1) Turnflex Shaft ECO with Rotary Disc T3-C10 (T-0367), (1) Turnflex Shaft ECO with Apple Core Burr A2-M8 (T-0365), (1) Pony Shaft ECO with small Guarded Burr P1-C8 (T-0156), Accessory Bag complete (T-1268), Long Case (T-0303).



T-0027G: TERAFLOAT ECO PROFESSIONAL XS SET

(2) Motors EF (T-0103), (3) Batteries 3.0Ah (T-0122), (1) 1-bay Charger 120V (T-0124), (1) Turnflex Shaft ECO with Rotary Disc T3-C10 (T-0367), (1) Turnflex Shaft ECO with Apple Core Burr A2-M8 (T-0365), (1) Pony Shaft ECO with small Guarded Burr P1-C8 (T-0156), (1) Incisor Shaft (T-0159), Accessory Bag complete (T-1268), Long Case (T-0303).



T-0063G: TERAFLOAT ECO PROFESSIONAL XL SET

(4) Motors EF (T-0103), (6) Batteries 3.0Ah (T-0122), (1) 4-bay Charger 120V (T-0128), (1) Turnflex Shaft ECO with Rotary Disc T3-C10 (T-0367), (1) Turnflex Shaft ECO with Apple Core Burr A2-M8 (T-0365), (1) Incisor Shaft (T-0159), (1) Pony Shaft ECO with small Guarded Burr P1-C8 (T-0156), (1) Incisor Speculum (S-0026), Accessory Bag complete (T-1268), Large Case (T-0304).



MOST POPULAR

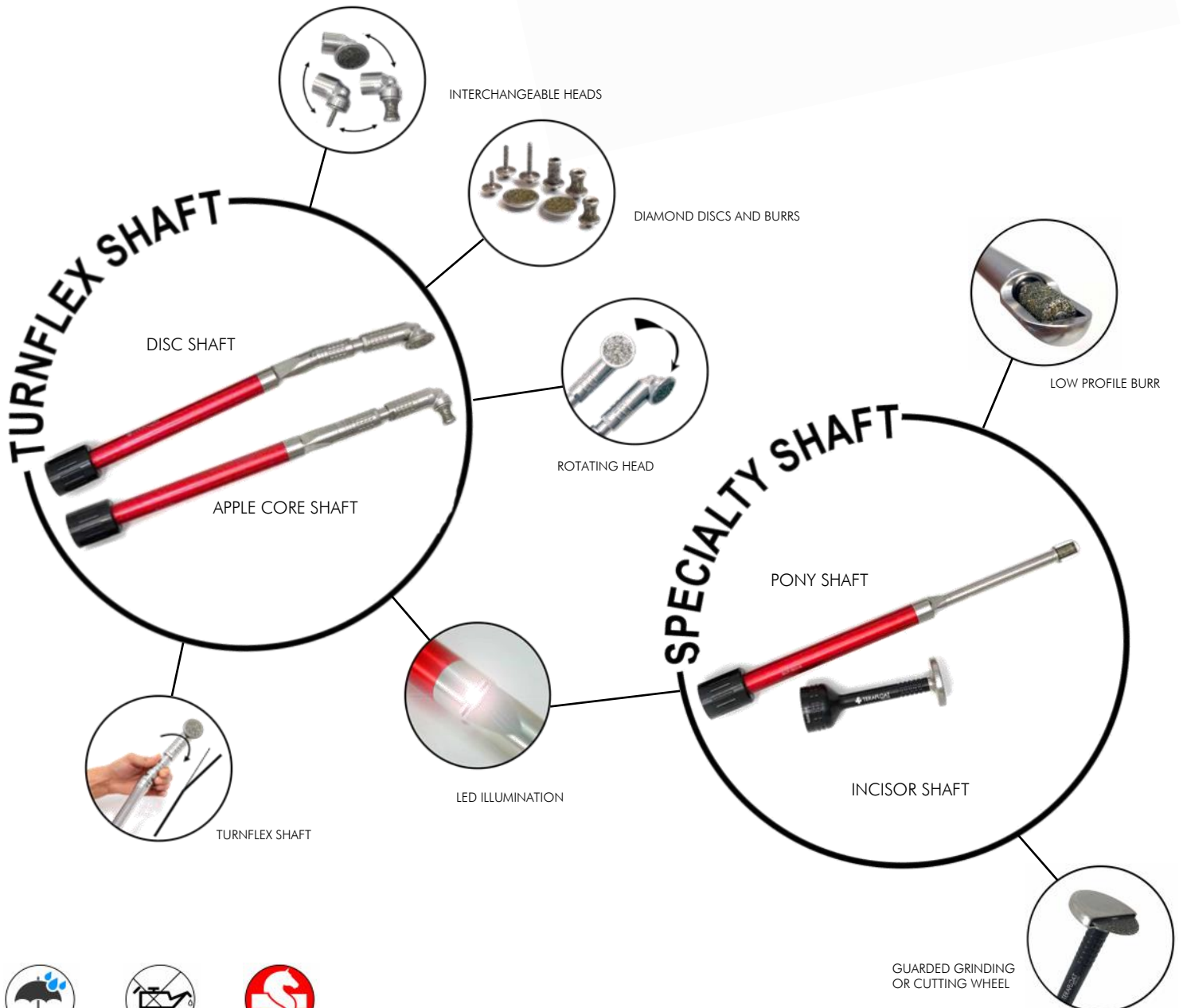
TERAFLOAT® LED

LIGHT WEIGHT PERFECTION

The Terafloat LED line features:

- Variable speed
- Trigger locking switch
- Electronic shut-off protection
- Lithium batteries 3Ah
- Battery charge indicator lights
- Removable shafts
- Wired for LED shaft
- Turnflex and Specialty shafts

TERAFLOAT LED STANDARD SET
WITH TURNFLEX SHAFTS
(DISC AND APPLE CORE)



WATER RESISTANT - MAINTENANCE FREE - SWISS MADE

The Terafloat LED line is the perfect power float for equine dentistry. It is lightweight, battery powered, water proof, maintenance free, durable and the built-in LED lights illuminate the oral cavity for perfect examination and treatment.

The two Turnflex shafts have the Turnflex mechanism to quickly switch from a straight or curved position allowing the perfect positioning of the grinding head. The apple core shaft and the disc shaft are identical, but each use a different grinding head. The diamond coated Terafloat burrs and discs are Swiss made and they are interchangeable. The Turnflex shafts are efficient and produce precise dental work.

The two Specialty shafts, the pony shaft and the incisor shaft, use the same motor and they are easily interchanged. The pony shaft has a low profile guarded burr that reaches tight spaces and the incisor shaft has a large cutting or grinding wheel which allows efficient and precise incisor work.

The Terafloat LED is an efficient and practical instrument with smart features for the most proficient equine dentistry procedures of the 21st century.

Several Terafloat LED sets are available to satisfy all dentistry needs. The modular components are interchangeable, making it easy to upgrade from one set to the next.



T-0004G: TERAFLOAT LED BASIC SET

(1) Motor LED (T-0101), (2) Batteries 3.0Ah (T-0122), (1) 1-bay Charger 120V (T-0124), (1) Turnflex Shaft LED with Rotary Disc T3-C10 (T-0352), Accessory Bag complete (T-1268), Long Case (T-0303).

T-0007G: TERAFLOAT LED BASIC PLUS SET

(1) Motor LED (T-0101), (2) Batteries 3.0Ah (T-0122), (1) 1-bay Charger 120V (T-0124), (1) Turnflex Shaft LED with Rotary Disc T3-C10 (T-0352), (1) head with Apple Core Burr A2-M8 (T-0187), Accessory Bag complete (T-1268), Long Case (T-0303).

T-0014G: TERAFLOAT LED STANDARD SET

(2) Motors LED (T-0101), (3) Batteries 3.0Ah (T-0122), (1) 1-bay Charger 120V (T-0124), (1) Turnflex Shaft LED with Rotary Disc T3-C10 (T-0352), (1) Turnflex Shaft LED with Apple Core Burr A2-M8 (T-0350), Accessory Bag complete (T-1268), Long Case (T-0303).

T-0050G: TERAFLOAT LED ADVANCED SET (INCISOR)

(2) Motors LED (T-0101), (3) Batteries 3.0Ah (T-0122), (1) 1-bay Charger 120V (T-0124), (1) Turnflex Shaft LED with Rotary Disc T3-C10 (T-0352), (1) Turnflex Shaft LED with Apple Core Burr A2-M8 (T-0350), (1) Incisor Shaft (T-0159), Accessory Bag complete (T-1268), Long Case (T-0303).

T-0053G: TERAFLOAT LED ADVANCED SET (PONY)

(2) Motors LED (T-0101), (3) Batteries 3.0Ah (T-0122), (1) 1-bay Charger 120V (T-0124), (1) Turnflex Shaft LED with Rotary Disc T3-C10 (T-0352), (1) Turnflex Shaft LED with Apple Core Burr A2-M8 (T-0350), (1) LED Pony Shaft with small Guarded Burr P1-C8 (T-0157), Accessory Bag complete (T-1268), Long Case (T-0303).

T-0011G: TERAFLOAT LED PROFESSIONAL XS SET

(2) Motors LED (T-0101), (3) Batteries 3.0Ah (T-0122), (1) 1-bay Charger 120V (T-0124), (1) Turnflex Shaft LED with Rotary Disc T3-C10 (T-0352), (1) Turnflex Shaft LED with Apple Core Burr A2-M8 (T-0350), (1) LED Pony Shaft with small Guarded Burr P1-C8 (T-0157), (1) Incisor Shaft (T-0159), Accessory Bag complete (T-1268), Long Case (T-0303).

T-0056G: TERAFLOAT LED PROFESSIONAL XL SET

(4) Motors EF (T-0103), (6) Batteries 3.0Ah (T-0122), (1) 4-bay Charger 120V (T-0128), (1) Turnflex Shaft ECO with Rotary Disc T3-C10 (T-0367), (1) Turnflex Shaft ECO with Apple Core Burr A2-M8 (T-0365), (1) Incisor Shaft (T-0159), (1) Pony Shaft ECO with small Guarded Burr P1-C8 (T-0156), (1) Incisor Speculum (S-0026), Accessory Bag complete (T-1268), Large Case (T-0304).



MOST POPULAR

TERAFLOAT® FLX

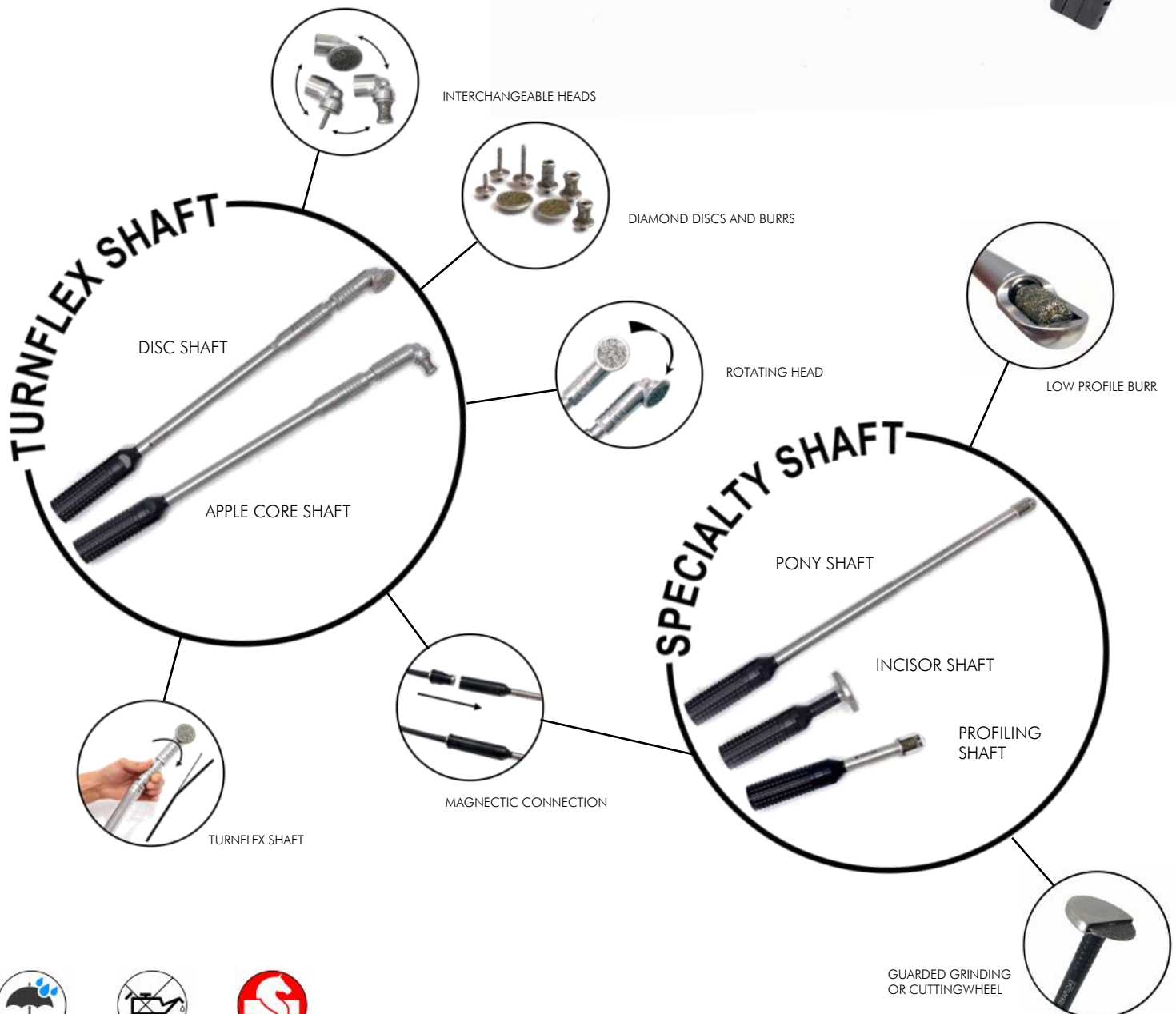
FLEXIBLE PERFECTION

The Terafloat FLX line features:

- Variable speed trigger with trigger lock
- Electronic shut-off protection
- Lithium batteries 6Ah
- Battery charge indicator lights
- Carrying belt with pivoting motor clip
- Holster for grinding shaft
- Reinforced flexible drive shaft
- Waterproof magnetic quick connection
- Turnflex shafts and Specialty shafts



TERAFLOAT FLX WITH
TURNFLEX DISC SHAFT

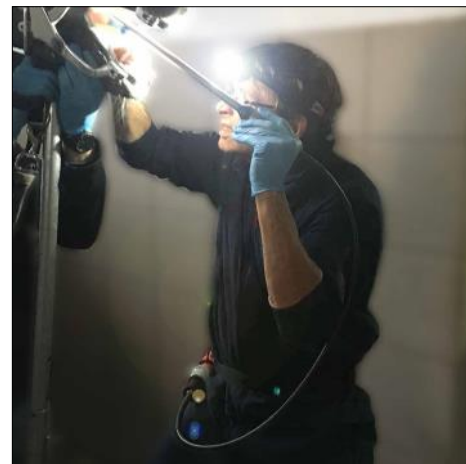


The Terafloat FLX line is perfect for the one handed treatment technique often favored in Europe. The motor pivots on a carrying belt with an instrument holster to hold the grinding shaft if needed. The connection between the reinforced flexible drive shaft and the grinding shafts is magnetic and waterproof.

The two Turnflex shafts have the Turnflex mechanism to quickly switch from a straight or curved position allowing the perfect positioning of the grinding head. The apple core shaft and the disc shaft are identical, but each use a different grinding head. The diamond coated Terafloat burs and discs are Swiss made and they are interchangeable. The Turnflex shafts are efficient and produce precise dental work.

The three Specialty shafts, the pony, the incisor and the profiling shaft. The pony shaft has a low profile guarded burr that reaches tight spaces and the incisor shaft has a large cutting or grinding wheel which allows efficient and precise incisor work. The profiling hand piece handles detailed work in the rostral aspect of the oral cavity including incisor work and 'O6 profiling.

Various Terafloat FLX sets are available, and the components are modular and interchangeable, making it easy to upgrade from one set to next level.



T-0077G: TERAFLOAT FLX BASIC SET

(1) Motor EF (T-0103), (1) Waist Belt (T-1210), (1) Flexdrive black 110cm/44" (T-1171), (2) Batteries 6.0Ah (T-0120), (1) 1-bay Charger 120V (T-0124), (1) Turnflex Shaft FLX with Rotary Disc T3-C10 (T-0382), Accessory Bag complete (T-1268), Long Case (T-0303).

T-0080G: TERAFLOAT FLX BASIC PLUS SET

(1) Motor EF (T-0103), (1) Waist Belt (T-1210), (1) Flexdrive black 110cm/44" (T-1171), (2) Batteries 6.0Ah (T-0120), (1) 1-bay Charger 120V (T-0124), (1) Turnflex Shaft FLX with Rotary Disc T3-C10 (T-0382), (1) head with Apple Core Burr A2-M8 (T-0187), Accessory Bag complete (T-1268), Long Case (T-0303).

T-0083G: TERAFLOAT FLX STANDARD SET

(1) Motor EF (T-0103), (1) Waist Belt (T-1210), (1) Flexdrive black 110cm/44" (T-1171), (2) Batteries 6.0Ah (T-0120), (1) 1-bay Charger 120V (T-0124), (1) Turnflex Shaft FLX with Rotary Disc T3-C10 (T-0382), (1) Turnflex Shaft FLX with Apple Core Burr A2-M8 (T-0380), Accessory Bag complete (T-1268), Long Case (T-0303).

T-0089G: TERAFLOAT FLX ADVANCED SET (INCISOR)

(1) Motor EF (T-0103), (1) Waist Belt (T-1210), (1) Flexdrive black 110cm/44" (T-1171), (2) Batteries 6.0Ah (T-0120), (1) 1-bay Charger 120V (T-0124), (1) Turnflex Shaft FLX with Rotary Disc T3-C10 (T-0382), (1) Turnflex Shaft FLX with Apple Core Burr A2-M8 (T-0380), (1) Incisor Shaft FLX (T-0144), Accessory Bag complete (T-1268), Long Case (T-0303).

T-0096G: TERAFLOAT FLX ADVANCED SET (PONY)

(1) Motor EF (T-0103), (1) Waist Belt (T-1210), (1) Flexdrive black 110cm/44" (T-1171), (2) Batteries 6.0Ah (T-0120), (1) 1-bay Charger 120V (T-0124), (1) Turnflex Shaft FLX with Rotary Disc T3-C10 (T-0382), (1) Turnflex Shaft FLX with Apple Core Burr A2-M8 (T-0380), (1) Pony Shaft FLX with small Guarded Burr P1-C8 (T-0143), Accessory Bag complete (T-1268), Long Case (T-0303).

T-0092G: TERAFLOAT FLX PROFESSIONAL XS SET (INCISOR/PONY)

(1) Motor EF (T-0103), (1) Waist Belt (T-1210), (1) Flexdrive black 110cm/44" (T-1171), (2) Batteries 6.0Ah (T-0120), (1) 1-bay Charger 120V (T-0124), (1) Turnflex Shaft FLX with Rotary Disc T3-C10 (T-0382), (1) Turnflex Shaft FLX with Apple Core Burr A2-M8 (T-0380), (1) Incisor Shaft FLX (T-0144), (1) Pony Shaft FLX with small Guarded Burr P1-C8 (T-0143), Accessory Bag complete (T-1268), Long Case (T-0303).

T-0453G: TERAFLOAT FLX PROFESSIONAL XL SET

(1) Motor EF (T-0103), (1) Waist Belt (T-1210), (1) Flexdrive black 110cm/44" (T-1171), (1) Spare Cable 6mm (T-1173), (2) Batteries 6.0Ah (T-0120), (1) 1-bay Charger 120V (T-0124), (1) Turnflex Shaft FLX with Rotary Disc T3-C10 (T-0382), (1) Turnflex Shaft FLX with Apple Core Burr A2-M8 (T-0380), (1) Incisor Shaft FLX (T-0144), (1) Pony Shaft FLX with small Guarded Burr P1-C8 (T-0143), (1) FLX Profiling Shaft with large Open Burr P2-C8 (T-0147), Accessory Bag complete (T-1268), Long Case (T-0303).



TERAFLOAT COMPONENTS

Terafloat ECO Motor (T-0103)

Milwaukee 12V Motor with trigger lock; not LED ready. No battery.



Terafloat LED Motor (T-0101)

Milwaukee 12V Motor with trigger lock, wired for LED shafts. No battery.



Small Charger (T-0124)

Milwaukee single-bay charger (used in all sets except professional sets)



Clinic Charger (T-0128)

Milwaukee 4-bay charger (used in professional sets)



Car Charger (T-0130)

Milwaukee charger for car with 12V port plug for 12V Milwaukee batteries



Small Battery (T-0122)

Milwaukee 12V battery 3.0Ah, small shape.



Large Battery (T-0120)

Milwaukee 12V battery 6.0Ah, large shape.



Terafloat Gear Blocking Tool (T-1258) Gear blocking tool used to change discs and burrs



Terafloat Long Case (T-0303)

Long hard plastic transport case for Terafloat with Logo (38"x10"x4" or 97cm x 25cm x 10cm)



Terafloat Large Case (T-0304)

Large hard plastic transport case for Terafloat professional sets with logo (29"x17"x7" or 74cm x 43cm x 18cm)



Rotary Disc T2-C10 (T-0202)

Coarse diamond coated grinding disc for non-guarded head



Rotary Disc T3-C10 (T-0206)

Coarse diamond coated grinding disc for guarded head



Apple Core Burr A2-M8 (T-0212)

Diamond coated apple core grinding burr for non-guarded head



Apple Core Burr Canine A4-M8 (T-0217)

Diamond coated apple core grinding burr for non-guarded head with additional inside coating for canine work



Cylindrical Burr Large Z1-M8 (T-0217)

Diamond coated large cylindrical grinding burr for non-guarded head.



Diastema burr Adapter base (T-0290)

Diastema burr collet, for shank 1/8" (3.1mm). Burr not included.



TERAFLOAT COMPONENTS

Diastema Burr Conical D1-F4 (T-0261)

Diamond coated conical diastema burr for non-guarded head. Full coating.



Diastema Burr Cylindrical Long D2-F4 (T-0262)

Diamond coated diastema burr for mandibular teeth, used with non-guarded head. Full coating.



Diastema Burr Cylindrical Extra Long D3-F4 (T-0263)

Extra long diamond coated cylindrical diastema burr for maxillary teeth, used with non-guarded head. Tip not coated.



Incisor Wheel S1-F4 (T-0285)

Diamond coated grinding wheel for incisor shaft.



Pony/ Profiling Shaft Burr P1-C8 (T-0283)

Diamond coated grinding burr for pony shaft or profiling shaft (FLX).



Open Profiling Burr P2-C8 (T-0284)

Diamond coated grinding burr for FLX profiling shaft without guard (open burr).



Terafloat Head without Guard (T-0180)

Terafloat head without guard, for Terafloat Turnflex shaft (ECO, LED or FLX). Works with all discs and burrs (not included) except T3.



Terafloat Head with Guard (T-0181)

Terafloat head with guard, for Terafloat Turnflex shaft (ECO, LED or FLX), works with T3 disc only (not included).



Head with Guarded Disc (T-0186)

Guarded Terafloat Head with T3-C10 coarse disc



Head with Non-guarded Apple Core Burr (T-0187)

Non-guarded Terafloat head with A2-M8 Apple Core Burr



Head with Non-guarded Diastema Burr Conical (T-0190)

Non-guarded Terafloat Head with short D1-F4 conical diastema burr



Head with mandibular diastema burr (T-0191)

Non-guarded Terafloat Head with medium length D2-F4 conical diastema burr



Head with maxillary diastema burr (T-0192)

Non-guarded Terafloat Head with long D3-F4 conical diastema burr, no coating on tip



Turnflex LED Shaft with Non-guarded Disc (T-0351)

LED Turnflex shaft, with head and non-guarded disc T2-C10



Turnflex LED Shaft with Guarded Disc (T-0352)

LED Turnflex shaft, with head and guarded disc T3-C10



Turnflex LED Shaft with Apple Core Burr (T-0350)

LED Turnflex shaft, with head and non-guarded apple core burr A2-M8



TERAFLOAT COMPONENTS

Terafloat LED Pony Shaft (T-0157)

LED pony shaft with built in LED lights, straight, slimline, with guarded diamond burr for caudal teeth, works with LED motor



Terafloat ECO Incisor Shaft (T-0159)

Terafloat incisor shaft with guarded diamond wheel for incisor work, works with LED and ECO motor



Turnflex ECO Shaft with Non-guarded Disc (T-0366)

ECO Turnflex shaft, with head and non-guarded coarse diamond disc T2-C10



Turnflex ECO Shaft with Guarded Disc (T-0367)

ECO Turnflex shaft, with head and guarded coarse diamond disc T3-C10



Turnflex ECO Shaft with Apple Core Burr (T-0365)

ECO Turnflex shaft with head and non-guarded apple core burr A2-M8



Terafloat ECO Pony Shaft (T-0156)

Terafloat shaft, straight, slimline, with guarded diamond burr for caudal teeth, works with ECO motor



Turnflex FLX Shaft with Nonguarded Disc (T-0381)

FLX Turnflex shaft, with non-guarded head and Disc T2-C10



Turnflex FLX Shaft with Guarded Disc (T-0382)

FLX Turnflex shaft, with guarded head and Disc T3-C10



Turnflex FLX Shaft with Apple Core Burr (T-0380)

FLX Turnflex shaft, with non-guarded head and apple core burr A2-M8



Terafloat FLX Incisor Shaft (T-0144)

FLX incisor shaft with large diamond coated incisor wheel



Terafloat FLX Pony Shaft (T-0143)

FLX pony shaft, straight, slimline, with guarded diamond burr for caudal teeth



Terafloat FLX Belt (T-1210)

Adjustable nylon belt for ECO motor with holster for FLX shaft



Terafloat FLX Shaft Holster (T-1224)

Pivoting holster for belt of the FLX line (replacement)



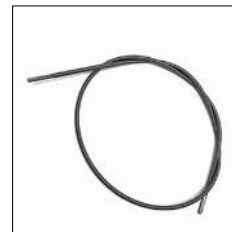
Terafloat FLX Drive shaft complete (T-1171)

Flexible drive shaft complete with drive cable and with connectors



Terafloat FLX Drive Shaft Cable (T-1173)

Flexible drive shaft drive cable only for FLX line



Terafloat FLX Drive shaft sleeve (T-1175)

Flexible drive shaft sleeve only (without inner cable or connectors) for FLX line



IMPORTANT

Always use sufficient sedation and a good quality full mouth speculum for treatment. Perform the procedures only if you have adequate training and experience with equine dentistry. Remove dental material conservatively - avoid that horses receive excessive treatment. If you have any questions or concerns please do not hesitate to contact Swissvet for assistance.

These instructions are valid for all three product lines of the Terafloat, ECO, LED and FLX.



Incisors (1) and Canines (also see 9): This procedure is best done at the beginning of the dental work when sedation is the strongest, with the Swissvet incisor speculum. Use the grinding disc for work on incisors (1) and additionally the apple core burr for smoothening the canines. Advanced users may consider the Terafloat Incisor float (9).

Points on lower (2) and upper arcade (3): Use the apple core burr and place it at a 45 degree angle on the lingual (2, lower arcade) or vestibular (3, upper arcade) side of the cheek teeth where points need to be smoothed and move caudally. Closing the speculum by one click on the treatment side can increase the space between cheek and teeth. Remove sharp points conservatively.

Hooks on lower (4) and upper arcade (5): Hooks can be reduced with grinding discs, the apple core burrs, or large cylindrical burrs, depending on the pathology as well as the space between upper and lower arcade.

When floating caudal hooks you may flex the shaft toward the lingual side to push the tongue away and hold the float straight to work your way from the lingual side onto the hooks (4). You may use your hand to guide the grinding head for rostral hooks (1/206). Flexing the shaft down helps avoiding the incisor plates of the speculum (5).

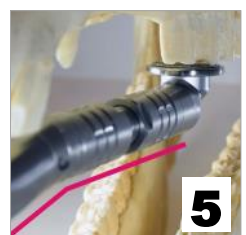
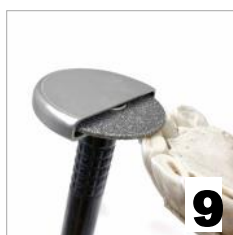
Waves and steps: Use the grinding disc (see 4) or, if space is very limited, the large cylindrical burr (6) to reduce waves or steps. Do not accidentally open a pulp cavity and do not take more than two cheek teeth out of occlusion one either side to avoid excessive stress on the remaining teeth in occlusion.

Bit seat (7): Use the apple core burr to place a bit seat and consider guiding the instrument with your second hand for better control of the procedure. Make sure not to open the pulp with this procedure.

Diastema (8): Use the long mandibular (D2), long maxillary (D3) or short (D1) diastema burr to enlarge an interdental space - with precaution. Make sure you understand the risk of this procedure and perform it only if other treatments have failed.

Incisor work (9) using the incisor shaft: Attention: this hand piece grinds very aggressively; make sure you don't over correct or open a pulp. Heat production is typically not a concern but check manually for heat. Use this hand piece to grind (9) or to cut the incisor to the desired length or shape. It is best to block the trigger lock and hold the motor/shaft with one hand and the mandible or maxilla with the other. Alternatively, incisor work can be done using the disk shaft.

Working with small breeds or in tight spaces (10) using the pony shaft: The pony shaft offers the perfect solution if the anatomy doesn't allow enough room for Turnflex shafts. The pony shaft is available for the ECO, FLX and the LED line. It has a small profile diamond burr to grind the tooth into the desired shape or to shorten it enough to apply the disc shaft or the apple core shaft to finish the job.



Swissvet Standard Speculum (S-0012)

McPherson style speculum, 5 adjustment levels, stainless steel (magnetic) with BioThane straps, standard AND half-circle plates



Swissvet Optimum Speculum (S-0015)

Millennium style speculum, 22 adjustment levels, stainless steel (magnetic) with BioThane straps, standard AND half-circle plates



Straight Plates (S-0058)

Straight speculum plates for incisor work (stainless steel with plastic protection)



Endodontic Plates (S-0060)

Stainless steel (magnetic) standard plates for full-mouth speculum with gap for endodontic treatment (pair)



Pony Mighty Speculum (S-0019)

Pony-sized stainless steel speculum, Mighty style, with BioThane straps and half-circle plates (made in Pakistan)



Modified Gunther Speculum (S-0022)

Modified Gunther speculum with moveable bite plates for MITSE technique; stainless steel with BioThane strap



TARO speculum (S-0016) Aluminum full-mouth speculum with rapid-close knobs, adjustable incisor plates, and BioThane straps (made in Germany)



Swissvet Mighty Speculum (S-0023) Standard-sized stainless steel speculum, 10 adjustment levels, with BioThane straps and half-circle plates (made in USA)



Swissvet Silverslide Speculum (S-0024)

Heavy-duty stainless steel speculum, infinitely adjustable, with BioThane straps and half-circle plates (made in USA)



Vienna Speculum (S-0018)

Full mouth surgical grade stainless steel speculum with leather straps (made in Germany)



Swissvet Incisor Speculum (S-0026)

Incisor speculum with adjustable elastic strap



Swissvet Dental Head Ring (S-0034) Head support ring with pivoting base, rope with cleet



Spreader Bar (S-0030) Stainless steel spreader bar for full-mouth speculums (fits McPherson or Millennium type speculums)



Cheek Retractor (S-0031) Stainless steel cheek retractor for full-mouth speculums



Headstand Standard (S-0035) Hoofjack head stand, standard model with a red base



Headstand Articulated (S-0036) Hoofjack head stand with advanced articulated cradle and a red base



Instrument Rack (S-0037) Instrument rack for Hoofjack head stand



Flush Syringe 400mL (S-0110) Flush syringe 400 mL, two-handed model, with spare seal



Flush Syringe 300mL (S-0111) Flush syringe with pistol grip 300 mL, one-handed model, with spare seal



Dental Mirror 50mm (S-0040) Dental mirror 50mm, stainless with T-handle. Replacement mirror available upon request (S-0041)



Illuminated Dental Mirror 48mm (S-0042) Illuminated dental mirror 48mm with LED light, one AA battery, and protective pouch (made in Germany). Replacement mirror available upon request (S-0044)

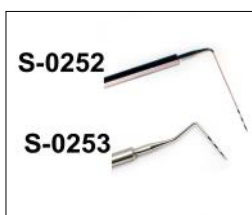


Periodontometer Set (S-0250) Erbrich periodontometer set with stainless steel handle and 2 periodontometer screw on tips, long (90deg) and short (60deg), made in Germany.



Periodontometer tip LONG (S-0252) Stainless steel replacement tip long 90 deg.

Periodontometer tip SHORT (S-0253) Stainless steel replacement tip short 60 deg.



Swissvet Head Light (S-0005)

LED head light with elastic strap, rechargeable via USB cord.



Examination Set (S-0400)

Examination and exploration set with 2 handles, straight (S-0403) and T-bar (S-0402), 12 screw on tips (S-0401), and pouch



Alligator Forceps Set (S-0409)

Alligator forceps stainless with scissor handle, 15" long, with fine gripping tip, 90 deg and straight 0 deg.



Wolf Tooth Set Small (S-0201)

Wolf tooth extraction set with 3 elevators, 2 forceps, and pouch



Wolf Tooth Set Large (S-0202)

Wolf tooth extraction set with 5 elevators, 5 forceps, one scaler, and stainless steel instrument box



Stainless Steel box (S-0203)

Instrument box, stainless steel with lid and brackets.



Tartar removal scaler (S-0405)

Stainless steel scaler for canine tartar removal



Wolf Tooth Elevators Long Pair (S-0204) Set of 2 stainless steel elevators 12" length



Wolf Tooth Set Long (S-0200)

Three elevators, and four forceps, 12" for wolf tooth removal. Stainless steel with pouch



Wolf Tooth Forceps Angled 11" (S-0255)

Stainless steel 11" wolf tooth forceps, angled.



Wolf Tooth Forceps Straight 11" (S-0256)

Stainless steel 11" wolf tooth forceps, straight.



S-Float (S-0101)

S-shaped hand float with carbide chips (made in Germany)



Hippodent Handle Short (S-0240) or Long (S-0241)

Short hippodent hand float handle 10" with pistol grip OR long hippodent hand float handle 16" with pistol grip: without blade (made in Germany)



Hippodent Blade straight (S-0242), curved up (S-0243) and curved down (S-0244)

made with carbide chips, fits short or long hippodent handle (made in Germany)



Incisor Extraction Set Swissvet (S-0301)

Incisor forceps 11" (S-0302), mallet (S-0305), fine elevator (S-0306), flat elevator (S-0308), and root elevator set (S-0420)



Swissvet Mallet (S-0305)

Stainless Steel Mallet, 750g



Root Elevator Set (S-0420)

Set of 4 stainless steel elevators with large brown handle



Elevator Flat (S-0308)

Stainless steel flat curved blade elevator for gingiva separation



Elevator Fine (S-0306)

Stainless steel elevator with fine tip for fragmet removal



Incisor Forceps 11" (S-0302)

Stainless steel forceps with 11" handle



Gingiva Elevator Set (S-0418)

Set of 2 stainless steel t-bar handle elevators for gingiva or fragments



Octagonal Elevator Set (S-0419)

Gingiva and molar fragment elevator set with 2 t-bar handles and 10 inserts (5 flat and 5 convex), stainless steel



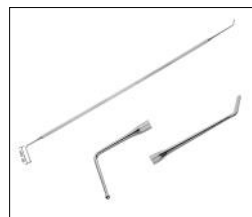
Gouges Set (S-0416)

Erbrich strong gouges set of 5 (6, 8, 10, 12, 14mm) (made in Germany)



Scaler Filling Instrument (S-0417)

Erbrich filling instrument for diastema treatment, with scaler end and 30mm long ball point 2.8mm, made in Germany.



Reynolds Caps removal forceps set (S-0220)

Set of 2 forceps for deciduous cheek tooth removal, stainless steel.



Swissvet Twitch (S-0115)

L-shaped stainless steel twitch with 6mm rope, single person model with brass bolt snap



Molar Extraction Forceps Concave (S-0323)

Universal molar forceps, concave jaws, round handle



Molar Extraction Set (S-0225)

Stainless steel extraction forceps set with (1) 3-prong left, (1) 3-prong right, (1) 4-prong, (1) molar spreader, and transport pouch



Reverse Molar Extraction Forceps Lower (S-0239)

Stainless steel straight reverse molar extraction forceps for mandibular O6 with 19" round handle



Molar Extraction Forceps 3P Left (S-0226)

Stainless steel 3-prong (one left) forceps with 19" round handle



Reverse Molar Extraction Forceps Upper (S-0239)

Stainless steel curved reverse molar extraction forceps for maxillary O6 with 19" round handle



Molar Extraction Forceps 3P Right (S-0227)

Stainless steel 3-prong (one right) forceps with 19" round handle



Fulcrum With Aluminum Blocks (S-0236)

Fulcrum with two stainless steel handles and 7 aluminum blocks



Molar Extraction Forceps 4P (S-0228)

Stainless steel 4-prong forceps with 19" round handle



Molar Fragment Forceps Set (S-0320)

Molar fragment extraction set with 3 stainless steel fragment forceps (20, 40, and 60mm)



Molar Extraction Forceps 4P Flat (S-0237)

Stainless steel 4-prong forceps with 19" flat handle



Molar Fragment Forceps Universal (S-0321)

Universal stainless steel 4cm molar fragment forceps with 19" round handle



Molar Extraction Forceps 4P Pony (S-0233)

Stainless steel pony sized 4-prong forceps with 19" round handle



Molar Spreader Long 3mm (S-0231)

Stainless steel standard spreader with 3mm blades and 19" round handle



Molar Forceps Universal Long (S-0229)

Stainless steel forceps with flat serrated jaw and 19" round handle



Molar Spreader Long 6mm (S-0238)

Stainless steel standard spreader with 6mm blades and 19" round handle



LIGHTWEIGHT PERFECTION

