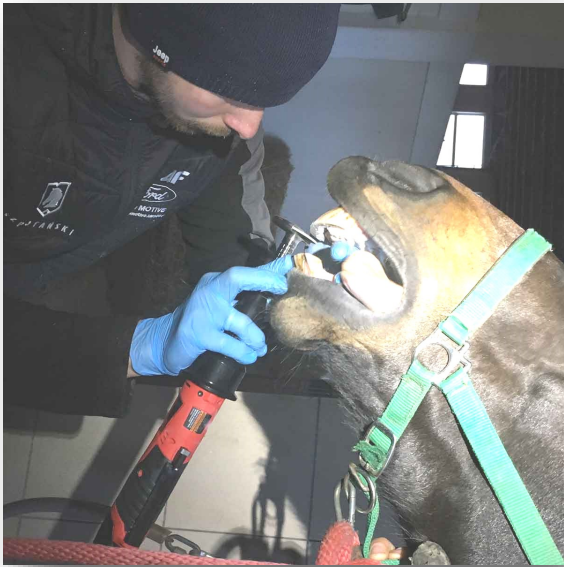


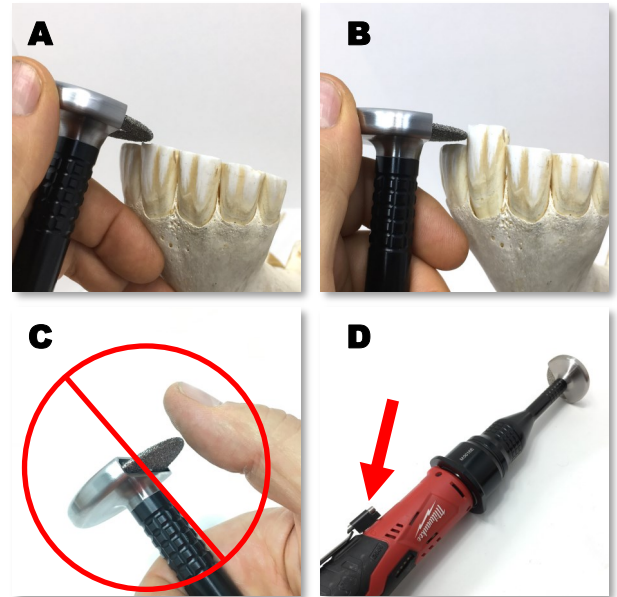


# TERAFLOAT

INCISOR SHAFT



# INCISOR SHAFT



## General

The Terafloat Incisor shaft is designed for work on horse's incisor teeth and should only be used by licensed and experienced equine veterinarians. Corrections on incisors is controversial, but may well be appropriate after examination and clinical diagnosis. These instructions are intended for all Terafloat models .

## Important

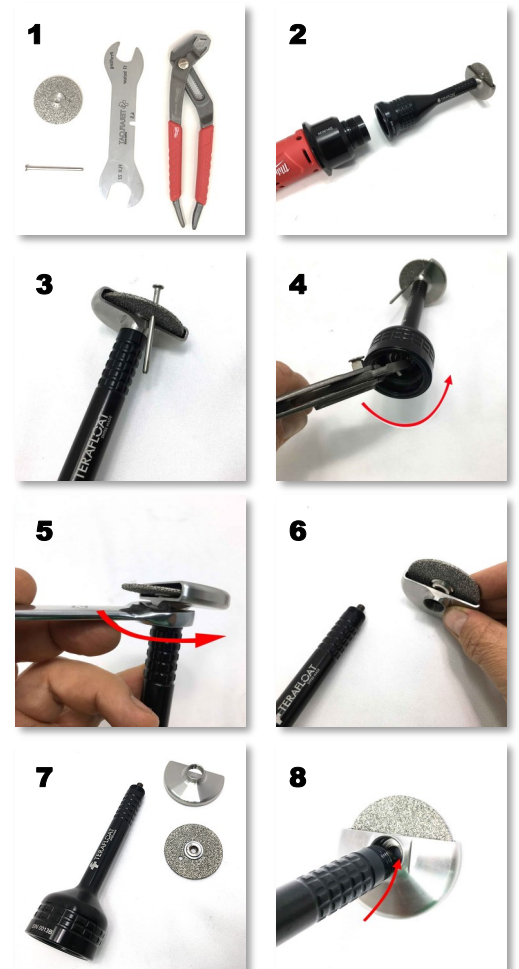
- This handpiece can be used for grinding (A) or cutting (B)
- Incisor work can be associated with heat development, especially when the tooth is cut off (B). Avoid heat damage with careful work, clean and fresh grinding disks and water cooling by syringe as needed.
- Do not touch the running grinding wheel (C)
- The handpiece for the ECO model is used for the LED line, as it doesn't require a light. This model is best used with a trigger lock on (D).

## Maintenance

- Clean the diamond coated wheel immediately after each use.
- Handpiece is waterproof, but avoid water entering the engine.
- Blunt grinding wheels should be replaced at an early stage. Blunt or poorly cleaned discs increase the risk of thermal damage to the teeth.

## Disc change

- (1) Required: Replacement disc, blocking pin, wrench (17mm) and pliers
- (2) Remove the shaft from the motor or Flexdrive shaft.
- (3) Block the disc: Put the pin through the hole in the disc
- (4) Loosen the axis from the disc with the help of the pliers (do not fully unscrew)
- (5) Loosen the protection from the shaft with the #17 wrench (do not fully unscrew)
- (6) Unscrew both parts: disc and protection at the same time
- (7) Change the disc
- (8) Screw the new disc back on in reverse order



If you have any questions, please contact your local dealer or contact SWISSVET.