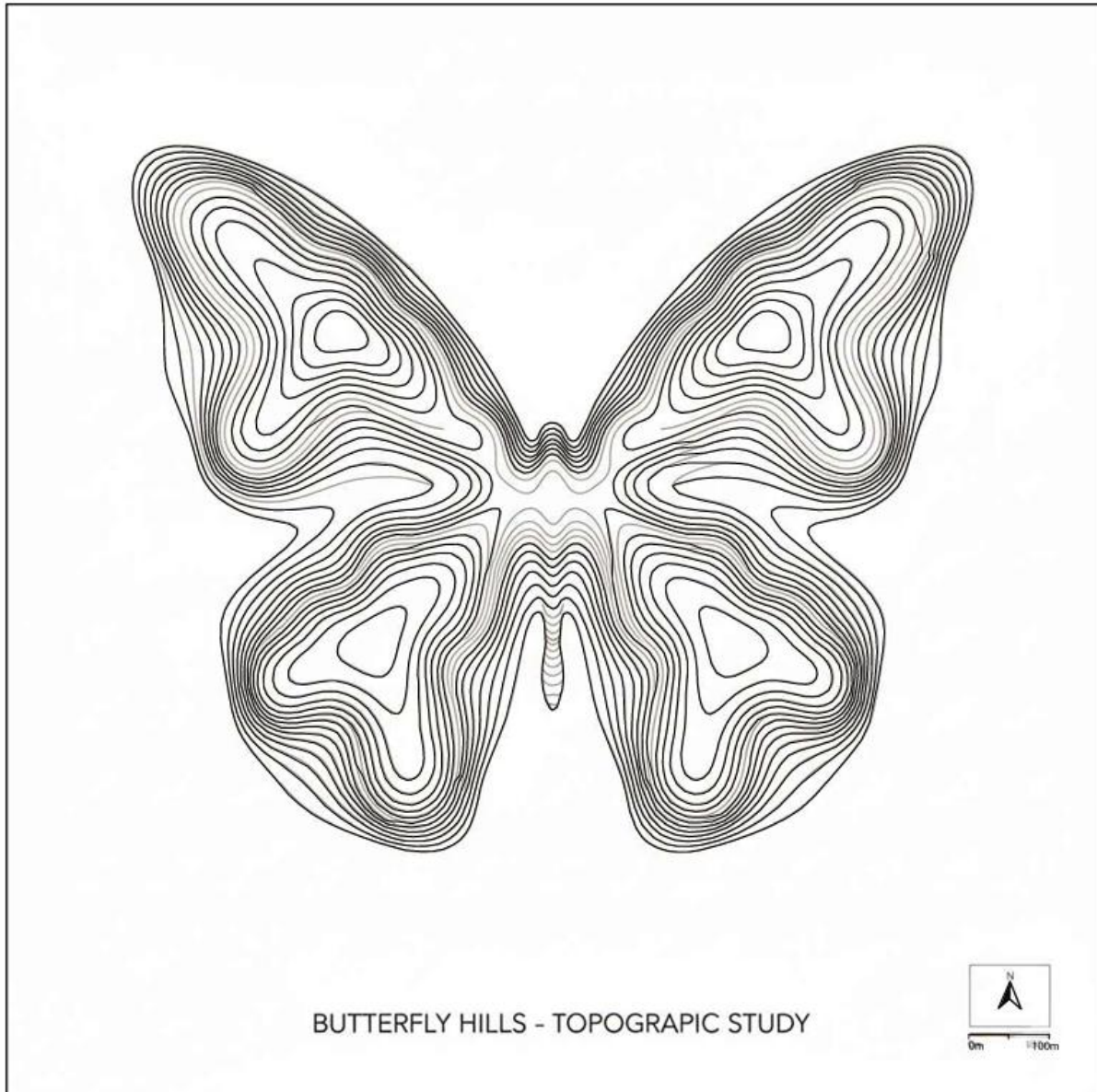
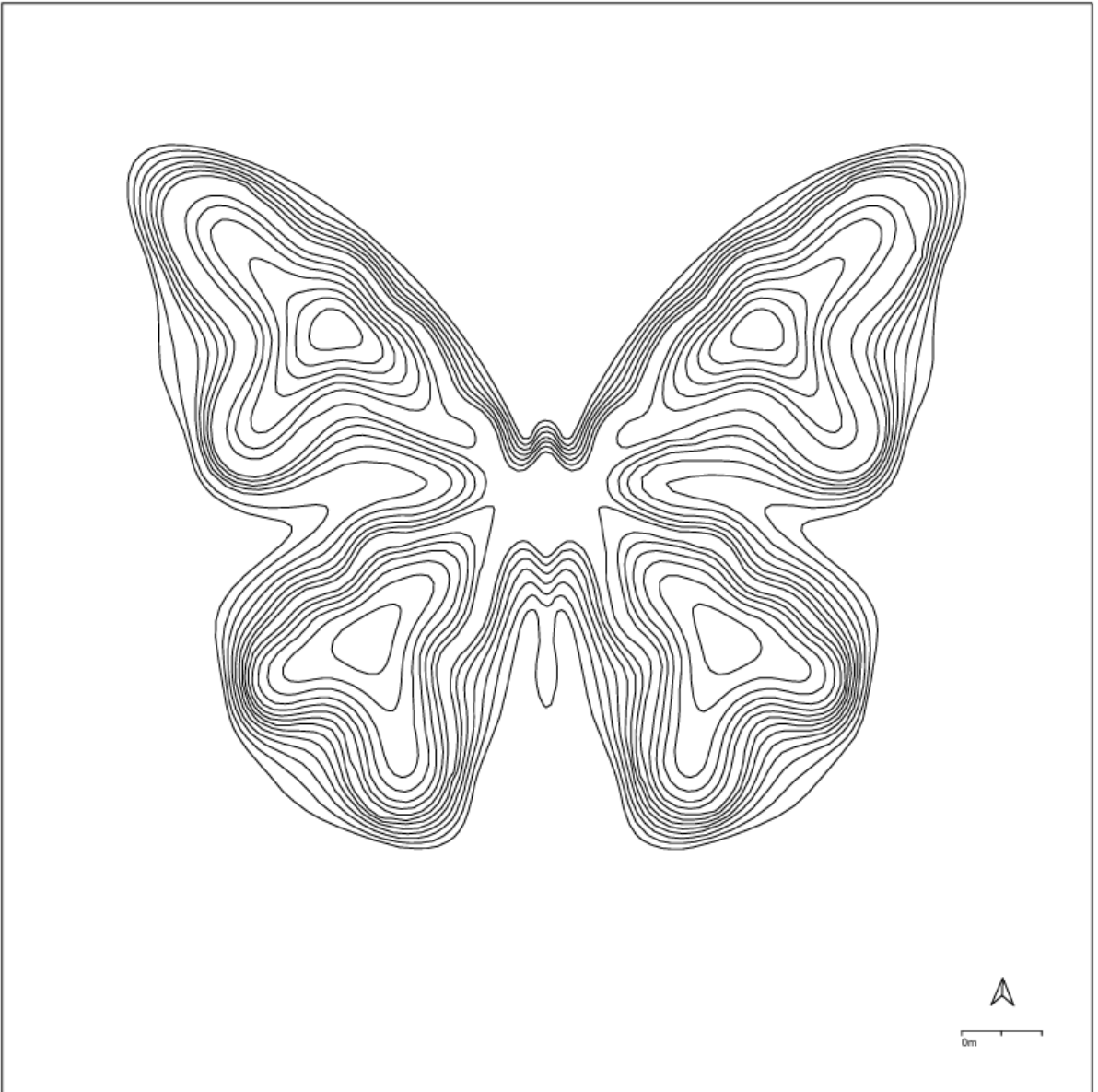


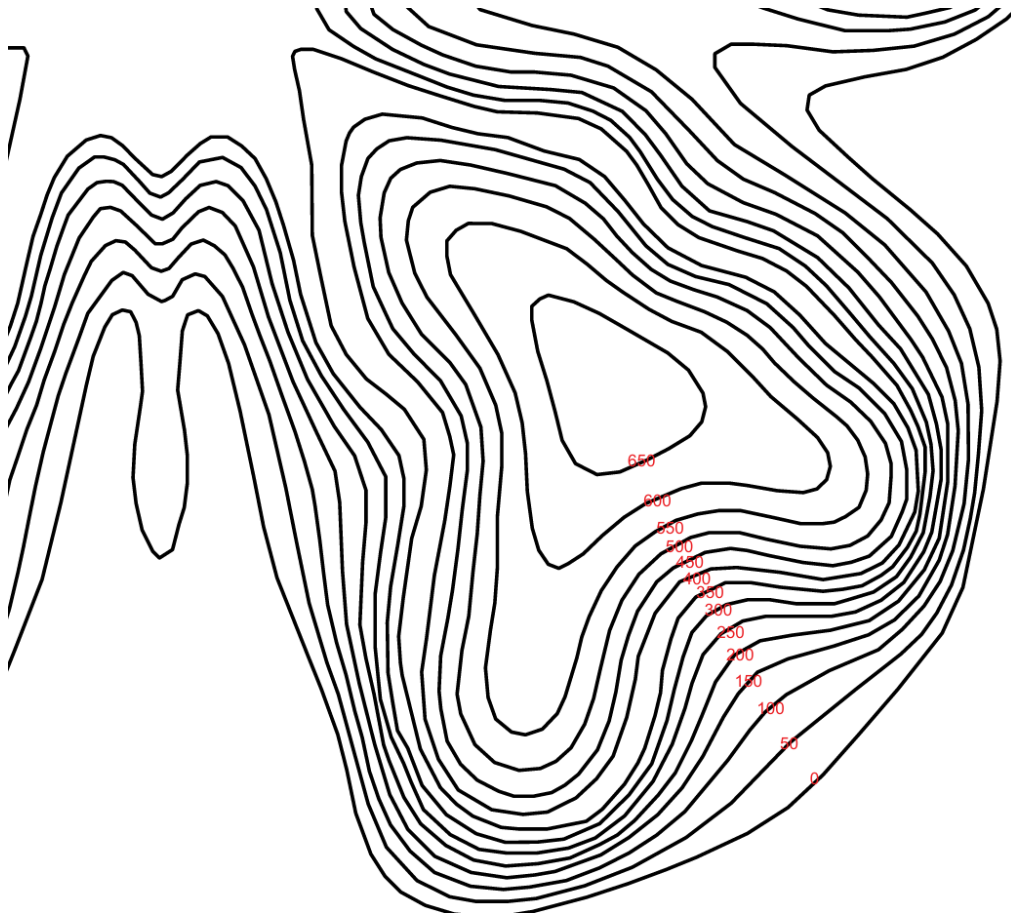
## PROJECT \_ Butterfly Island



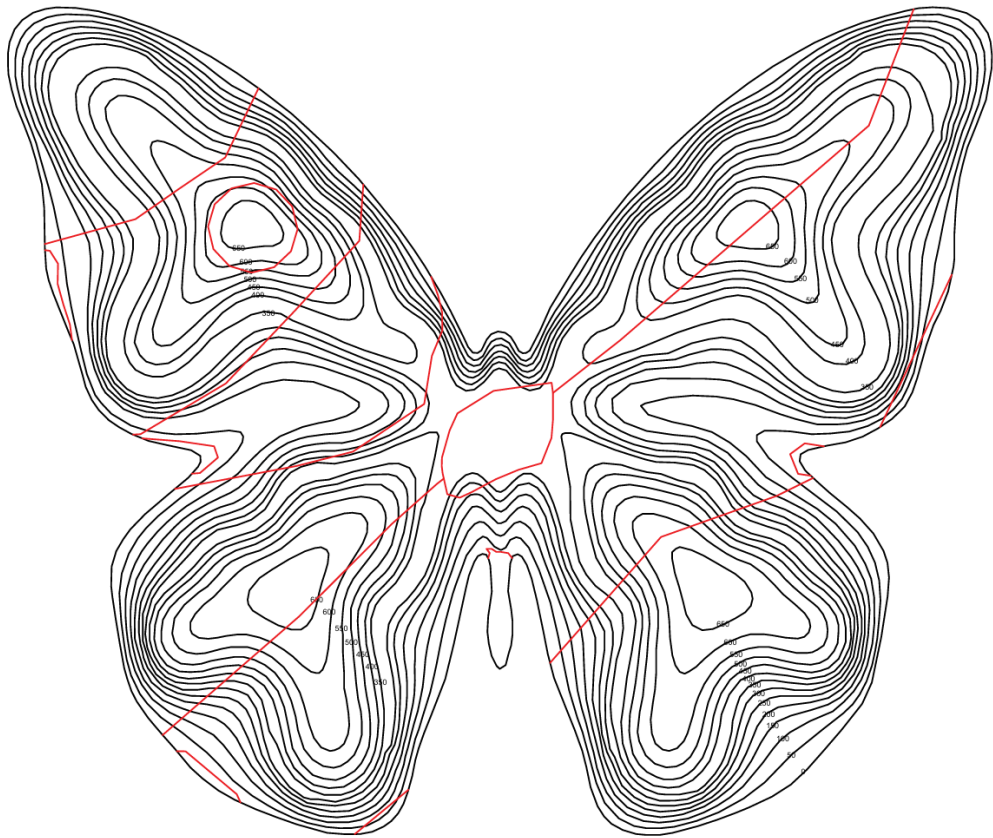
**Fig. 1.1** AI-generated contour map created with Gemini to demonstrate AI-assisted cartographic workflows. The elevation data represent a fictional terrain ("Butterfly Island") and do not correspond to real geographic locations.



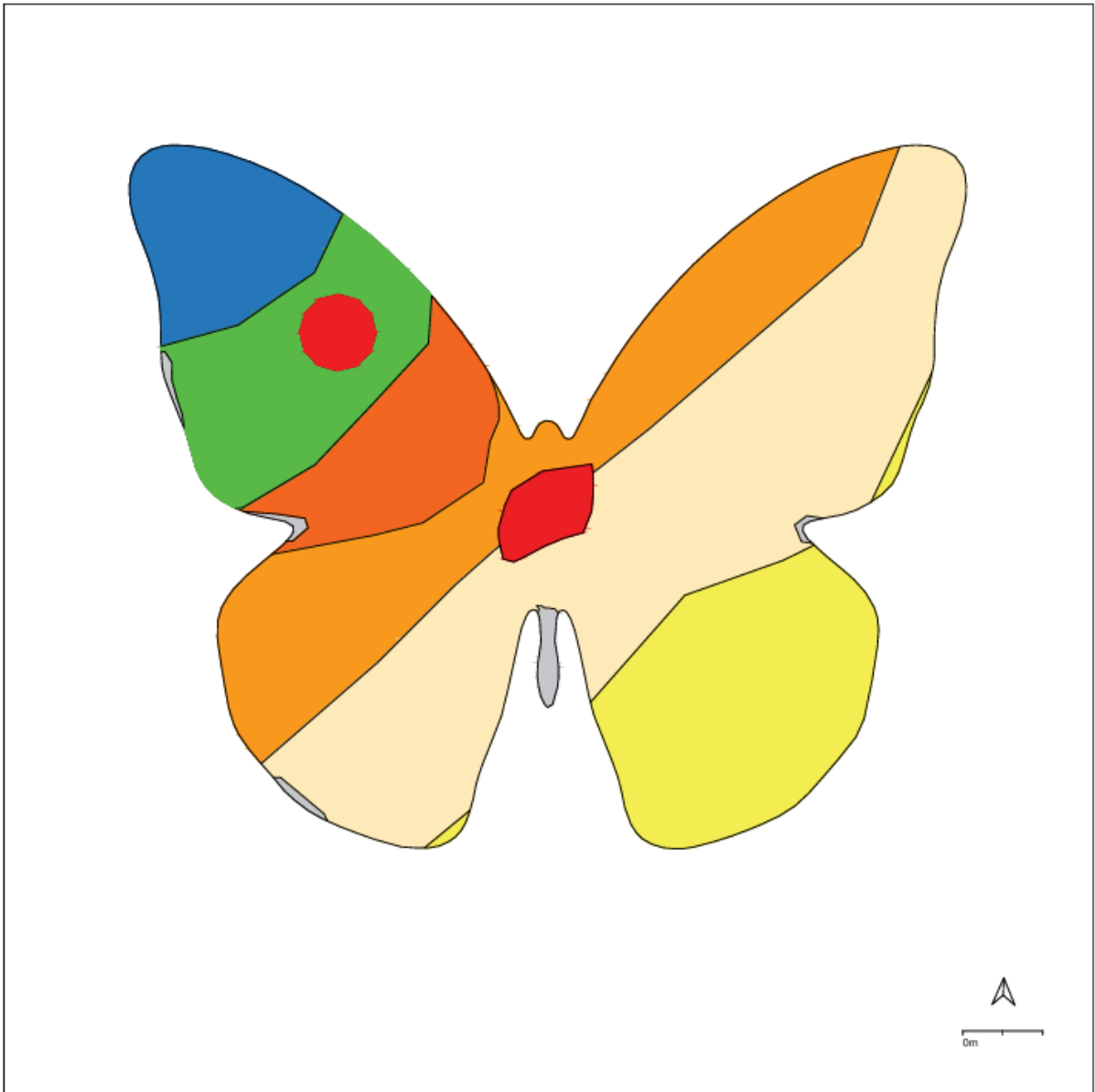
**Fig 1.2** Contours inconsistent with natural terrain morphology were removed, and Butterfly Island was vectorized (digitized).



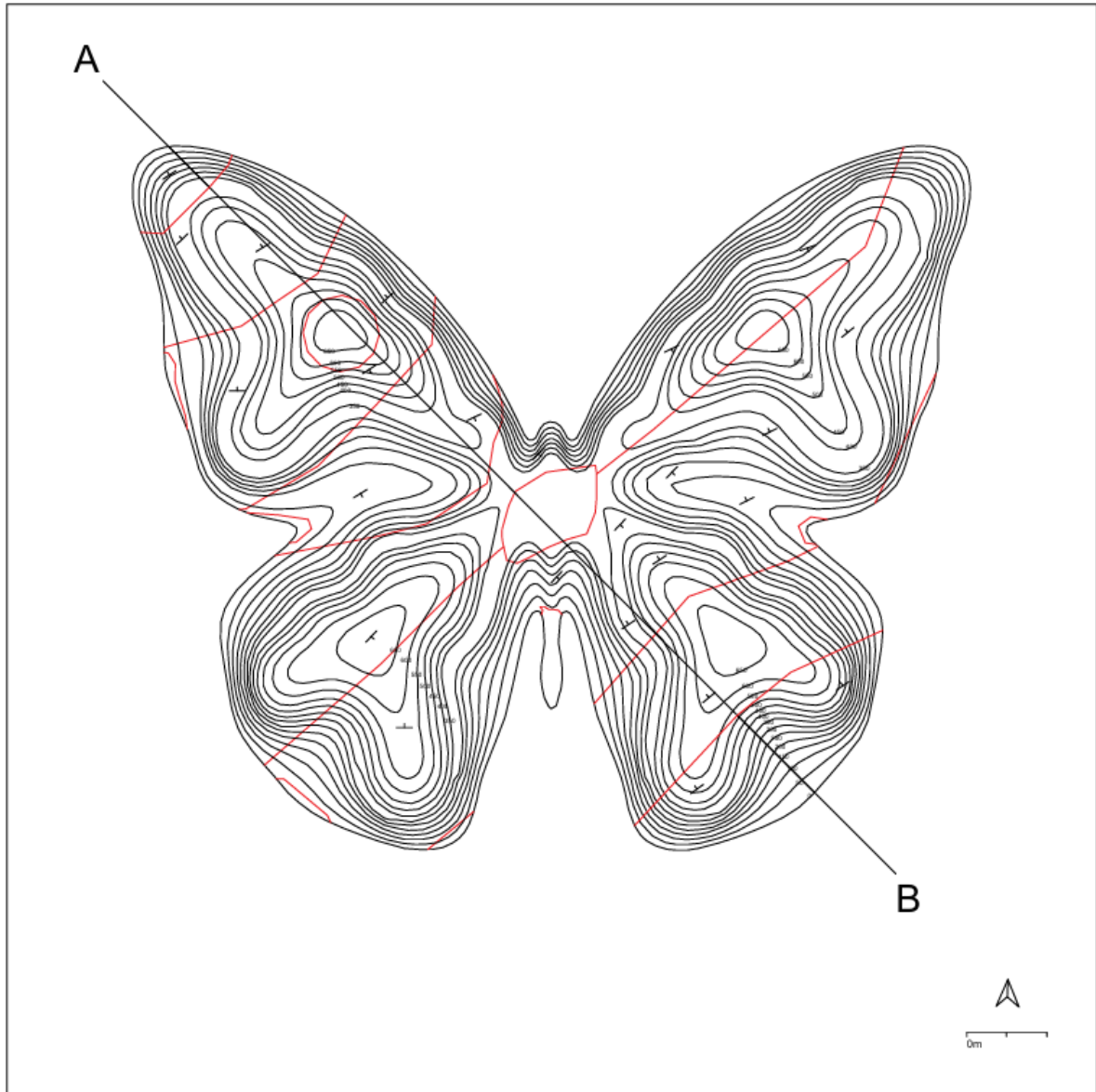
**Fig 1.3** Contour elevations were assigned starting from 0 m with 50 m intervals, as the landform represents an island.



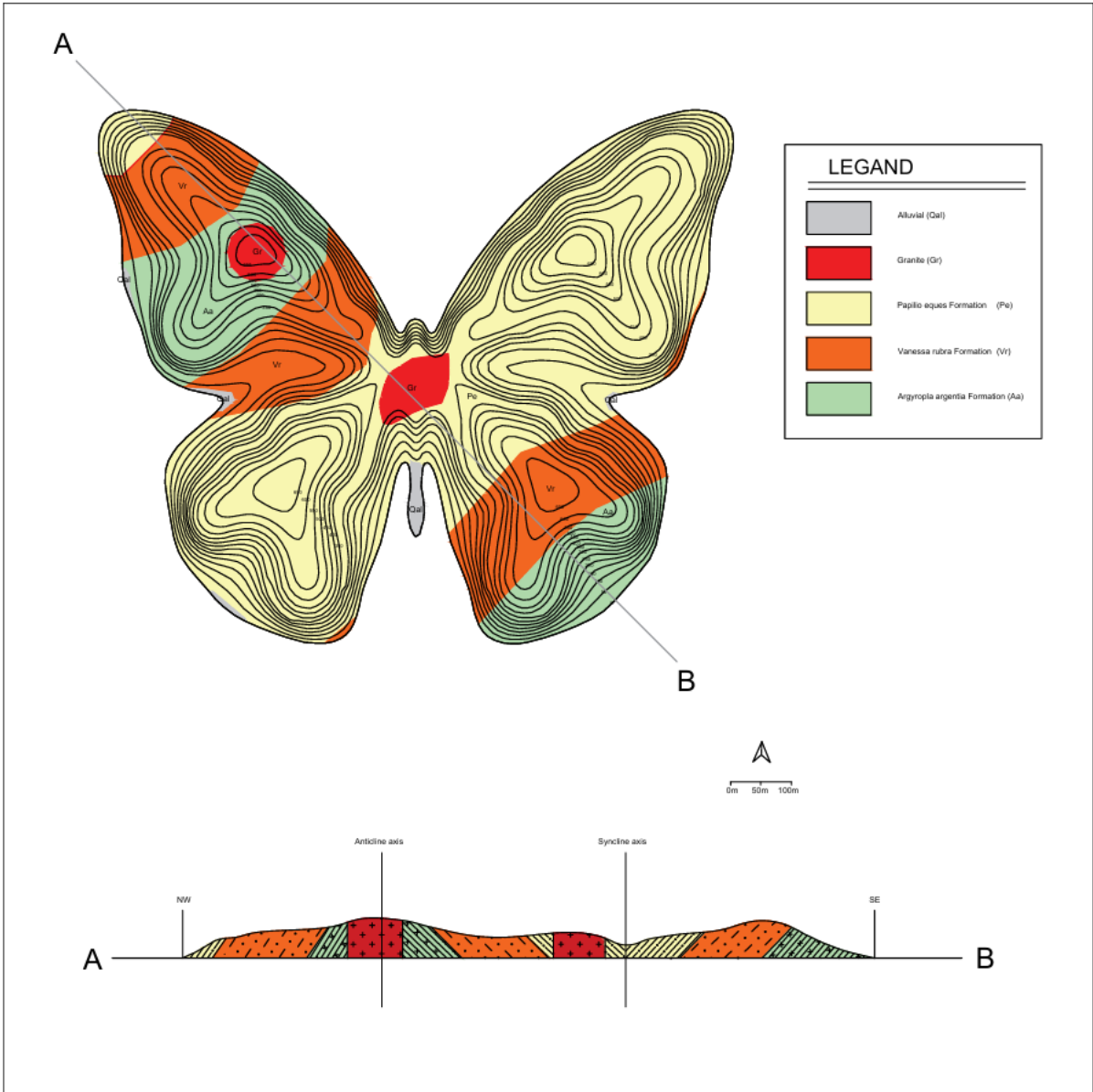
**Fig 1.4.** Geological contact boundaries were delineated for Butterfly Island.



**Fig 1.5** Geological units were classified and visualized using hatch patterns corresponding to their geological ages.

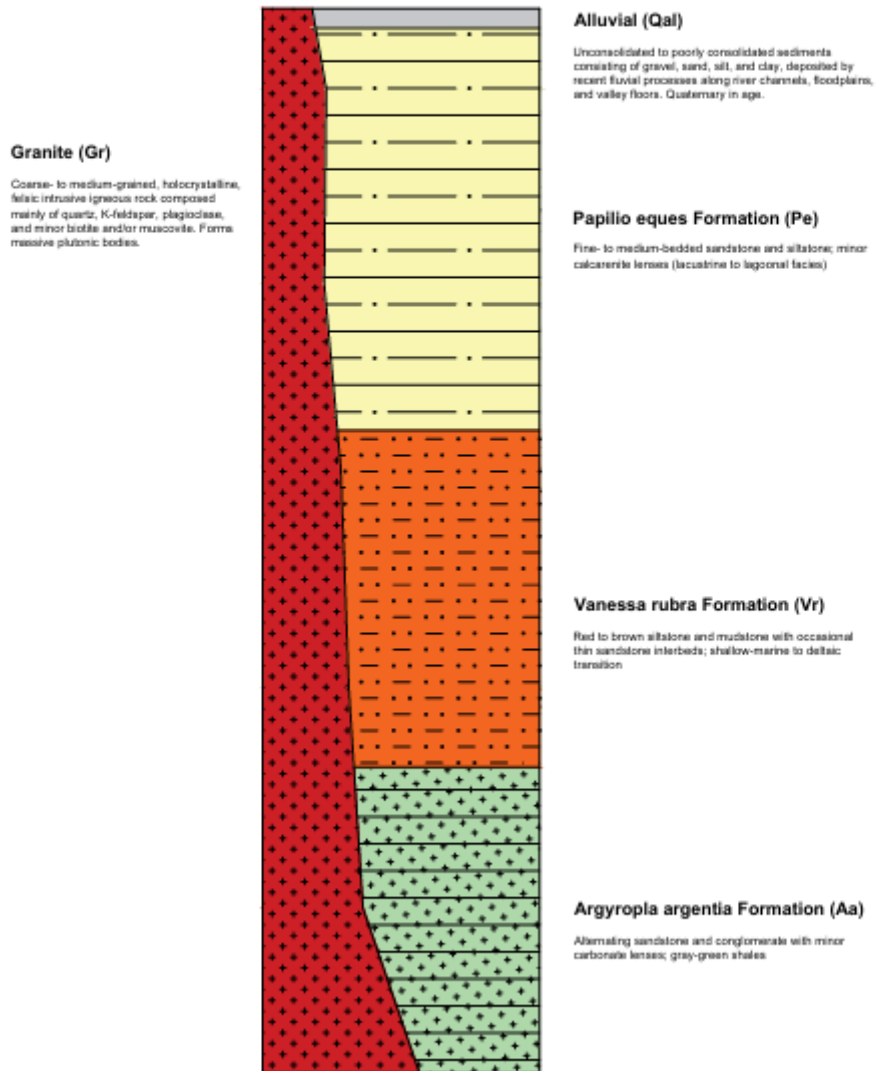


**Fig 1.6** Bedding dip directions and the geological cross-section line were determined.



**Fig 1.7** The geological map was completed, a legend was added, and the cross-section was drawn along the previously defined section line.

# Stratigraphic Cross-Section of Butterfly Island



**Fig 1.8** Stratigraphic cross-section of Butterfly Island.