



ASCHERMANN

CHAROLAIS / AKAUSHI

34th Edition Production Sale

ACE ORR LOCK N LOAD 243P



HEARTBRAND HOT DAM 9249



MARCH 19, 2022 • 1 PM AT THE RANCH



ASCHERMANN

CHAROLAIS / AKAUSHI

SALE DATE AND TIME:

Saturday, MARCH 19, 2022 at 1:00 PM
Please dress for the weather.

SALE LOCATION:

At the Ranch: 3852 County Rd. 110, Carthage, MO 64836. Take exit 22 north off Interstate 44. Then go 1 mile west and 2 miles north, from the entrance of the stockyards. Sale site on the right.

SALE DAY PHONES:

Larry 417-793-2855 cell
Peggy 417-793-2255 cell

AUCTIONEER:

Jackie Moore 417-825-0948 cell

SALE DAY ADVISORS:

Dr. Bill Able - Miami, OK 918-541-5179
Bailey Moore - Granby, MO 417-540-4343
Skyler Moore - Mt. Vernon, MO 417-737-2615

CHAROLAIS JOURNAL:

David Hobbs - AICA K.C. MO 913-515-1215

ORDER BUYING:

If you are unable to attend the sale, but wish to purchase please contact us. You can buy with our sight unseen guarantee. You can buy with confidence.

LIVE STREAM VIDEO AUCTION:

Enjoy the live stream video auction on Cowbuyer.com
View/bid on Cowbuyer.com
Real high speed internet service preferred.

BREEDING GUARANTEE:

These virgin bulls are semen tested and scrotal measurements taken. Plus the bulls will be BVD and Trichomoniosis tested. Simply put, your cows complete satisfaction and herd health is our goal.

EPD'S:

The breed average for Non Parent EPD distribution is: CE 5.8
BW -0.3 WW 57.6 YW 104.3 MILK 22.8 TOTAL MATL 51.6
SC 0.9 MCE 5.3 HCW 21.7 REA 0.71 FAT 0.009 MARB 0.11
TSI 247.70. Additional EPD's for sale bulls can be provided.

FOOD:

Sale day, 1st thing coffee and donuts. Then lunch will be served.

MOTEL:

The host motel will be at the: Super 8 Motel in Carthage, MO
417-359-9000. If you need assistance with a room, just let us know.

LIABILITY:

We are not responsible for any injury or accidents.

SALE CATALOG DESIGN:

Jocelyn Washam, Rural Route Creations

WEB MASTER:

Joan Thorne, TLC Website Designs



Welcome to our 34th Production Sale

This spring we are offering another group of genetically superior bulls. Depending on your selection, we have all the performance that you need.

Maybe just as important, our bulls are developed in hot fescue pastures for a sound and productive life. Our 18-month-old bulls will not fall apart when turned out.

For the Akaushi portion of our sale, we welcome Circle K Cattle Co. of Springfield, MO as a guest consignor. They are offering six fullblood bulls. Combined with ours, that gives you fifteen bulls to select from. While internet marketing is here to stay, we believe live auctions are still important. We are also offering nine bred fullblood females, plus twelve half-bloods. Additionally, one half and three fourths blood feeders and fats are selling.

We hope to see you ringside sale day. However, for those who cannot attend, we will be live on the internet. Just like our last several sales - www.cowbuyer.com will broadcast our sale. Plus, we will be happy to take your bid over the phone.

Photos of key reference sires are scattered throughout the sale book. The weekend prior to the sale, videos of requested bulls will be posted on our website - www.aschermanncharolais.com

When you find a bull you would like to have videoed, please call. Once again, the sale will be broadcast live.

If there is anything we can do to help with your next investment in making your cows and your banker happy, let us know.

Larry & Peggy



LIVE INTERNET VIEWING AND BIDDING AT
www.cowbuyer.com

CUSTOMER SERVICE

We believe that our after the sale warranty is one of the best in the industry. You have a problem, any problem with our bulls, we are there for you. We are not happy until you are happy.

Bulls we offer at our sale are “The Cream Of the Crop”. This is not a sale where the top bulls have been sold off and you get the left overs. We have a long and proven track record of satisfied customers. We have taken the gamble out of herd sire selection.

It's important to us that we sell bulls in everyone's price range. As you are aware herd bulls represent at least half of the genetic input of the calves you sell later. That percentage goes up if you decide to save replacement females. Stated in current market reports there can be a \$.30 per pound spread in the #1's vs. #2's and #3's of the same weight. No matter what the market is, you always get paid more for high quality calves. Now more than ever is the time to buy the best bull you can.

TERMINAL SIRE INDEX

With the release of 2015 Fall EPDs, a new data point has been added - AICA Terminal Sire Index (TSI). The AICA Terminal Sire Index (TSI) is a formal method of combining Expected Progeny Differences (EPD) - BWT, WWT, YWT, REA, HCW, MARB and FAT - into one single value on which to base selection decisions. The TSI uses estimates of the genetic relationships between traits with an economic default value based on the three year rolling USDA database.

The TSI represents a dollar index per terminal progeny produced for a bull in the AICA database, ranking them for profit potential. This dollar index is to be interpreted much like a single trait EPD. For example, if Sire A's index is \$236.00 and Sire B's index is \$256.00, then we would expect Sire B's offspring to average \$20.00 more net return (\$256.00 minus \$236.00) than Sire A's offspring.



*Photo taken after spring breeding 2020

Reference Sire: ACE ORR LEDGER 743P

CE: 6.1 BW: 0.3 WW: 66 YW: 120 MILK: 21 HCW: 23 MARB: 0.19 TSI: 260.78



LOT ACE-ORR PATRIOT 038P

1-38 REG: M954651 DOB: 4/29/20

LT LEDGER 0332 P	CE: 2.5	BW: 0.5
LT PATRIOT 4004 PLD	WW: 53	YW: 105
LK MISS RIO 2119	MILK: 26	SC: 0.9
M6 GRID MAKER 104 PET	HCW: 24	MARB: 0.15
ORR'S MS TRADITION 979P	TSI: 248.13	
ORR'S MS TRADITION205PET		

BW: 90

Adj WW: 607



LOT ACE-ORR ICON 042P

2-42 REG: M954648 DOB: 5/11/20

PZC BOTTOMS UP 5011 ET	CE: 3.1	BW: 0.3
WCR ICON 756 P	WW: 61	YW: 122
WCR MS COUNTYLINE 5251 P	MILK: 24	SC: 0.9
LT VENTURE 3198 PLD	HCW: 31	MARB: 0.06
ORR'S MS DUTCHESS 585P	TSI: 263.78	
ORR'S MS DUTCHESS 452P		

BW: 92

Adj WW: 605



LOT ACE NCC MO BOB 014

3-14 REG: M954164 DOB: 2/21/20

ACE MR MO BOB 3809X	CE: 11.1	BW: -1.4
ACE-LT-MR MO BOB 603	WW: 64	YW: 110
LT MS MAKER 129	MILK: 25	SC: 0.6
ACE-ORR STEEL 351 P ET	HCW: 19	MARB: 0.11
NCC-STEEL 605	TSI: 251.37	
NCC-PERFECT WIND-226		

BW: 75

Adj WW: 677



LOT ACE NCC MO BOB 040

4-40 REG: M954168 DOB: 3/3/20

ACE MR MO BOB 3809X	CE: 8.7	BW: 0.1
ACE-LT-MR MO BOB 603	WW: 67	YW: 114
LT MS MAKER 129	MILK: 26	SC: 0.6
ACE-ORR STEEL 351 P ET	HCW: 19	MARB: 0.13
NCC STEEL 690	TSI: 252.83	
NCC-DOC EASY 462		

BW: 77

Adj WW: 682



LOT ACE NCC STEEL 081

5-81 REG: M954184 DOB: 4/20/20

WR WRANGLER W601	CE: 6.8	BW: -0.1
ACE-ORR STEEL 351 P ET	WW: 62	YW: 105
ORR'S MS NANCY 458P	MILK: 27	SC: 0.9
FINK 2926 OF 5803 NS	HCW: 20	MARB: 0.17
BF MS HOLLY SPRINGS 2015	TSI: 247.31	
PB MISS MAC		

BW: 83

Adj WW: 684

**LOT ACE-ORR PATRIOT 051P****6-51 REG: M954643 DOB: 6/2/20**

LT LEDGER 0332 P	CE: 3.9	BW: -0.2
LT PATRIOT 4004 PLD	WW: 58	YW: 114
LK MISS RIO 2119	MILK: 20	SC: 1.2
LT VENTURE 3198 PLD	HCW: 30	MARB: 0.13
ORR'S MS TRADITION 576P	TSI: 256	
ORR'S LADY TRADITION 856P		

BW: 89

Adj WW: 612

**LOT ACE-ORR PATRIOT 047P****7-47 REG: M954644 DOB: 5/19/20**

LT LEDGER 0332 P	CE: 3.2	BW: -0.1
LT PATRIOT 4004 PLD	WW: 63	YW: 116
LK MISS RIO 2119	MILK: 25	SC: 1.1
LT POLLED VALUE 9089	HCW: 31	MARB: 0.12
ORR'S MS ROSE 146P	TSI: 255.45	
ORR S MS ROSE 848		

BW: 90

Adj WW: 680

**LOT ACE NCC MO BOB 059****8-59 REG: M954170 DOB: 3/15/20**

ACE MR MO BOB 3809X	CE: 9	BW: -0.3
ACE-LT-MR MO BOB 603	WW: 63	YW: 110
LT MS MAKER 129	MILK: 24	SC: 0.7
ACE MR DOC EASY 7113PLD	HCW: 20	MARB: 0.17
NCC-DOC EASY 625	TSI: 250.14	
G BLANCO DUKE S 837 PL		

BW: 78

Adj WW: 641

**LOT ACE NCC STEEL 087****9-87 REG: M954186 DOB: 5/11/20**

WR WRANGLER W601	CE: 8.9	BW: -1
ACE-ORR STEEL 351 P ET	WW: 60	YW: 103
ORR'S MS NANCY 458P	MILK: 29	SC: 0.9
FINK 2926 OF 5803 NS	HCW: 20	MARB: 0.15
BF MS HOLLY SPRINGS 1315	TSI: 245.73	
GG MS NO DOUBT 1712 P		

BW: 79

Adj WW: 638

**LOT ACE-ORR AFFINITY 012P****10-12 REG: M954664 DOB: 3/10/20**

LT RUSHMORE 8060 PLD	CE: 5.7	BW: -1.7
LT AFFINITY 6221 PLD	WW: 57	YW: 109
LT ATHENA 1247	MILK: 27	SC: 0.9
LT PATRIOT 4004 PLD	HCW: 21	MARB: 0.2
ORR'S MS ROSE 7110P	TSI: 254.59	
ORR'S MS ROSE 146P		

BW: 82

Adj WW: 674

**LOT ACE NCC STEEL 085****11-85 REG: M954185 DOB: 5/7/20**

WR WRANGLER W601	CE: 7.6	BW: -0.4
ACE-ORR STEEL 351 P ET	WW: 61	YW: 105
ORR'S MS NANCY 458P	MILK: 22	SC: 0.8
GP 914 OZARK SILVER PLD	HCW: 13	MARB: 0.12
G MERRI GRID P	TSI: 245.25	
GP MERRI GRIDMAKER PLD		

BW: 81

Adj WW: 703



Reference Sire: LT Patriot 4004 PLD

CE: 1.5 BW: -0.4 WW: 65 YW: 122 MILK: 26 HCW: 32 MARB: 0.15 TSI: 260.35



LOT ACE NCC STEEL 083

12-83 REG: M954187 DOB: 5/1/20

WR WRANGLER W601	CE: 8.3	BW: -0.9
ACE-ORR STEEL 351 P ET	WW: 63	YW: 107
ORR'S MS NANCY 458P	MILK: 27	SC: 0.9
FINK 2926 OF 5803 NS	HCW: 19	MARB: 0.15
BF MS HOLLY SPRINGS 915	TSI: 248.46	
PB MISS 162		

BW:
82

Adj WW:
701



LOT ACE NCC STEEL 075

14-75 REG: M954183 DOB: 4/15/20

WR WRANGLER W601	CE: 9.5	BW: -0.9
ACE-ORR STEEL 351 P ET	WW: 58	YW: 98
ORR'S MS NANCY 458P	MILK: 21	SC: 0.7
ACE MR PERFECT WIND 899 ET	HCW: 16	MARB: 0.15
NCC-PERFECT WIND-220	TSI: 240.27	
MISS PRIME UNL P		

BW:
77

Adj WW:
650



LOT ACE NCC MO BOB 065

15-65 REG: M954171 DOB: 3/29/20

ACE MR MO BOB 3809X	CE: 8.2	BW: 0.3
ACE-LT-MR MO BOB 603	WW: 68	YW: 116
LT MS MAKER 129	MILK: 25	SC: 0.6
ACE-ORR STEEL 351 P ET	HCW: 19	MARB: 0.11
NCC STEEL 735	TSI: 254.66	
NCC-PERFECT WIND-223		

BW:
81

Adj WW:
722



LOT ACE-ORR LEDGER 097P

16-97 REG: M962001 DOB: 9/14/20

LT BLUEGRASS 4017 P	CE: 6.5	BW: 0.3
LT LEDGER 0332 P	WW: 68	YW: 126
LT BRENDA 6120 PLD	MILK: 20	SC: 1.7
M6 NEW STANDARD 842 P ET	HCW: 30	MARB: 0.23
ORR'S MS RIO 435P	TSI: 268.21	
ORR'S MS RIO 838P		

BW:
92

Adj WW:
809



LOT ACE NCC STEEL 002

17-2 REG: M962323 DOB: 8/26/20

WR WRANGLER W601	CE: 9.8	BW: -1.4
ACE-ORR STEEL 351 P ET	WW: 68	YW: 110
ORR'S MS NANCY 458P	MILK: 25	SC: 0.6
CLINK MR 229 SANDMAN 012	HCW: 17	MARB: 0.12
BF MS BREAKOUT 6615	TSI: 250.2	
WW AVON 254		

BW:
76

Adj WW:
719

**LOT ACE-ORR LOCK N LOAD 087P****18-87 REG: M962005 DOB: 9/9/20**

LT LEDGER 0332 P	CE: 8.4	BW: 0
ACE-ORR LOCK N LOAD 243P	WW: 73	YW: 130
ORR'S MS PETUNIA 941P	MILK: 22	SC: 1.3
WR WRANGLER W601	HCW: 31	MARB: 0.19
ORR'S MS GRID 366P	TSI: 271.09	
ORR'S MS GRID 606 ET		

BW: 88

Adj WW: 792

**LOT ACE-ORR RANSOM 086P****19-86 REG: M962007 DOB: 9/8/20**

LT JOURNEY 5208 PLD	CE: 5.9	BW: -0.8
LT RANSOM 8644	WW: 64	YW: 109
LT SHEILA 337 PLD	MILK: 23	SC: 1.2
LT LEDGER 0332 P	HCW: 20	MARB: 0.22
ORR'S MISS TRADITION 511P	TSI: 252.07	
ORR		

BW: 84

Adj WW: 792

**LOT ACE NCC MO BOB 042****20-42 REG: M954169 DOB: 3/4/20**

ACE MR MO BOB 3809X	CE: 10.9	BW: -1.3
ACE-LT-MR MO BOB 603	WW: 62	YW: 107
LT MS MAKER 129	MILK: 22	SC: 0.7
ACE MR DOC EASY 7113PLD	HCW: 17	MARB: 0.15
NCC DOC EASY 713	TSI: 247.97	
G WIND SIL DUKE 815 PL		

BW: 76

Adj WW: 666

**LOT ACE-ORR ICON 074****21-74 REG: M962349 DOB: 9/4/20**

PZC BOTTOMS UP 5011 ET	CE: 5.5	BW: -0.7
WCR ICON 756 P	WW: 61	YW: 121
WCR MS COUNTYLINE 5251 P	MILK: 32	SC: 0.7
LT POLLED VALUE 9089	HCW: 30	MARB: 0.1
ORR'S MS WIND 846	TSI: 263.24	
ORR'S MS WIND 610 P		

BW: 84

Adj WW: 729

**LOT ACE-ORR CITATION 089P****22-89 REG: M962004 DOB: 9/10/20**

LT SUNDANCE 2251 PLD	CE: 8.8	BW: -0.5
LT CITATION 5228 PLD	WW: 71	YW: 122
LT JULIE 2055 PLD	MILK: 21	SC: 1.7
WR WRANGLER W601	HCW: 23	MARB: 0.23
ORR LADY NANCY 364 ET	TSI: 265.07	
ORR'S MS NANCY 458P		

BW: 87

Adj WW: 748

**LOT ACE NCC STEEL 9141****23-9141 REG: M954189 DOB: 12/30/19**

LT LEDGER 0332 P	CE: 9.4	BW: -1.1
ACE-ORR LEDGER 743P	WW: 64	YW: 112
ORR'S MS TRADITION 979P	MILK: 22	SC: 0.9
ACE-ORR STEEL 351 P ET	HCW: 19	MARB: 0.19
NCC-STEEL 654	TSI: 254.23	
NCC-DOC EASY 302		

BW: 73

Adj WW: 792



Reference Sire: ACE ORR STEEL 351 P ET

CE:10.6 BW:-1.1 WW:65 YW:110 MILK:25 HCW:19 MARB:0.12 TSI:250.70



LOT ACE-ORR RANSOM 085P

24-85 REG: M962006 DOB: 9/8/20

LT JOURNEY 5208 PLD	CE: 5.2	BW: -0.1
LT RANSOM 8644	WW: 64	YW: 110
LT SHEILA 337 PLD	MILK: 20	SC: 1.1
LT LEDGER 0332 P	HCW: 20	MARB: 0.22
ORR'S MS NANCY 523P	TSI: 252.22	
ORR'S MS NANCY 1036 P		

BW:
85
Adj WW:
771



LOT ACE NCC LEDGER 009

25-9 REG: M962325 DOB: 9/3/20

LT LEDGER 0332 P	CE: 6.2	BW: 2
ACE-ORR LEDGER 743P	WW: 57	YW: 100
ORR'S MS TRADITION 979P	MILK: 22	SC: 0.8
CLINK MR 229 SANDMAN 012	HCW: 17	MARB: 0.13
BF MS BREAKOUT 6215	TSI: 239.44	
JB ULLIMITED 342		

BW:
95
Adj WW:
637



LOT ACE-ORR RANSOM 077P

26-77 REG: M962008 DOB: 9/6/20

LT JOURNEY 5208 PLD	CE: 5.7	BW: -0.5
LT RANSOM 8644	WW: 65	YW: 111
LT SHEILA 337 PLD	MILK: 21	SC: 1.1
LT VENTURE 3198 PLD	HCW: 22	MARB: 0.18
ORR'S MS NANCY 577P	TSI: 254.4	
ORR		

BW:
84
Adj WW:
741



LOT ACE-ORR ICON 061P

27-61 REG: M962351 DOB: 9/1/20

PZC BOTTOMS UP 5011 ET	CE: 5.2	BW: -2.3
WCR ICON 756 P	WW: 65	YW: 129
WCR MS COUNTYLINE 5251 P	MILK: 24	SC: 0.8
LT REWARD 2348 PLD	HCW: 32	MARB: 0.11
ORR'S MS TRADITION 720	TSI: 273.45	
ORR'S MS TRADITION 352		

BW:
73
Adj WW:
677



LOT ACE NCC LEDGER 0016

28-16 REG: M962326 DOB: 9/14/20

LT LEDGER 0332 P	CE: 9.2	BW: 0.6
ACE-ORR LEDGER 743P	WW: 68	YW: 117
ORR'S MS TRADITION 979P	MILK: 22	SC: 0.9
ACE-ORR STEEL 351 P ET	HCW: 20	MARB: 0.18
NCC STEEL 763	TSI: 256.27	
NCC-DOC EASY 455		

BW:
89
Adj WW:
727

**LOT ACE-ORR AUTHORITY 098P****29-98 REG: M962002 DOB: 9/14/20**

LHD CHOTEAU B1669 P	CE: 10.7	BW: -2.6
LT AUTHORITY 7229 PLD	WW: 52	YW: 93
LT KATY 4273 PLD	MILK: 22	SC: 1
LT LANDMARK 5052 PLD	HCW: 12	MARB: 0.1
ORR'S MS TRADITION 799P	TSI: 237.92	
ORR'S MS TRADITION 532P		

BW: 84

Adj WW: 749

**LOT ACE-ORR CITATION 094P****30-94 REG: M962003 DOB: 9/12/20**

LT SUNDANCE 2251 PLD	CE: 7	BW: -0.3
LT CITATION 5228 PLD	WW: 67	YW: 121
LT JULIE 2055 PLD	MILK: 20	SC: 1.6
M6 SHOCK & AWE 9104 PLD	HCW: 22	MARB: 0.24
ORR'S MS DUCHESS 141P	TSI: 264.9	
ORR'S MS DUTCHESS 452P		

BW: 86

Adj WW: 757

**LOT ACE-ORR ICON 0106P****31-106 REG: M962347 DOB: 10/1/20**

PZC BOTTOMS UP 5011 ET	CE: 6.9	BW: -0.9
WCR ICON 756 P	WW: 55	YW: 111
WCR MS COUNTYLINE 5251 P	MILK: 31	SC: 0.5
ACE-ORR WALKER 367 P	HCW: 26	MARB: 0.13
ORR'S MS HALLE 692 P	TSI: 258.26	
ORR'S MS HALLE 969P		

BW: 87

Adj WW: 682

**LOT ACE-ORR ICON 088P****32-88 REG: M962348 DOB: 9/9/20**

PZC BOTTOMS UP 5011 ET	CE: 4.9	BW: -0.3
WCR ICON 756 P	WW: 70	YW: 133
WCR MS COUNTYLINE 5251 P	MILK: 28	SC: 0.8
LT LEDGER 0332 P	HCW: 28	MARB: 0.14
ORR'S MS TRADITION 636P	TSI: 274.21	
ORR'S MS TRADITION 267P		

BW: 86

Adj WW: 755

**LOT ACE-ORR PATRIOT 072P****33-72 REG: M962010 DOB: 9/4/20**

LT LEDGER 0332P	CE: 3.4	BW: -0.2
LT PATRIOT 4004 PLD	WW: 62	YW: 114
LK MISS RIO 2119	MILK: 24	SC: 1
M6 GRID MAKER 104 PET	HCW: 27	MARB: 0.15
ORR'S LADY NANCY 823P	TSI: 255.65	
ORR'S MS NANCY 651 ET		

BW: 84

Adj WW: 729

**LOT ACE-ORR CHEROKEE 070P****34-70 REG: M962011 DOB: 9/3/20**

LT LANDMARK 5052 PLD	CE: 6.7	BW: -0.6
ACE-ORR CHEROKEE 718P	WW: 67	YW: 117
ORR'S MS NANCY 466P	MILK: 24	SC: 1.1
LT SUNDANCE 2251 PLD	HCW: 20	MARB: 0.11
ORR'S MS WIND 444P	TSI: 258.49	
ORR'S MS WIND 847		

BW: 85

Adj WW: 731



Reference Sire: WCR Icon 756 P

CE: 5.7 BW: -1.9 WW: 74 YW: 144 MILK: 33 HCW: 33 MARB: 0.07 TSI: 286.05



LOT ACE-ORR CHEROKEE 0108P

35-108 REG: M962000 DOB: 10/18/20

LT LANDMARK 5052 PLD	CE: 7.7	BW: -1.4
ACE-ORR CHEROKEE 718P	WW: 62	YW: 110
ORR'S MS NANCY 466P	MILK: 23	SC: 1.1
LT SUNDANCE 2251 PLD	HCW: 22	MARB: 0.14
ORR'S MS GRID 452P	TSI: 254.86	
ORR'S MS GRID 851		

BW:
80

Adj WW:
682



LOT ACE-ORR CHEROKEE 054P

36-54 REG: M962016 DOB: 8/4/20

LT LANDMARK 5052 PLD	CE: 6.1	BW: -2
ACE-ORR CHEROKEE 718P	WW: 51	YW: 97
ORR'S MS NANCY 466P	MILK: 27	SC: 0.8
ACE-ORR WALKER 367 P	HCW: 14	MARB: 0.07
ORR'S MS TRADITION 648 P	TSI: 244.31	
ORR'S MS TRADITION 1081 P		

BW:
78

Adj WW:
650



LOT ACE-ORR AFFINITY 067

37-67 REG: M962012 DOB: 9/2/20

LT RUSHMORE 8060 PLD	CE: 9.3	BW: -1.4
LT AFFINITY 6221 PLD	WW: 57	YW: 113
LT ATHENA 1247	MILK: 26	SC: 1
RBM FARGO Y111	HCW: 23	MARB: 0.15
ORR'S MS TRADITION 839P	TSI: 258.13	
ORR'S MISS TRADITION 503P		

BW:
84

Adj WW:
700



LOT ACE-ORR ICON 064P

38-64 REG: M962350 DOB: 9/1/20

PZC BOTTOMS UP 5011 ET	CE: 6.9	BW: -1.8
WCR ICON 756 P	WW: 58	YW: 117
WCR MS COUNTYLINE 5251 P	MILK: 23	SC: 0.9
LT LEDGER 0332 P	HCW: 30	MARB: 0.13
ORR'S MS RIO 602P	TSI: 261.89	
ORR'S MS RIO 487 ET		

BW:
81

Adj WW:
643



LOT ACE-ORR AFFINITY 063P

39-63 REG: M962013 DOB: 9/1/20

LT RUSHMORE 8060 PLD	CE: 10.5	BW: -2
LT AFFINITY 6221 PLD	WW: 53	YW: 101
LT ATHENA 1247	MILK: 26	SC: 0.9
1A MR SANDMAN BY ACE 809 P	HCW: 16	MARB: 0.17
ORR'S MS NANCY 805P	TSI: 247.65	
ORR'S MS NANCY 570P		

BW:
82

Adj WW:
706

**LOT ACE-ORR CHEROKEE 059P****40-59 REG: M962014 DOB: 8/28/20**

LT LANDMARK 5052 PLD	CE: 8.5	BW: -1.3
ACE-ORR CHEROKEE 718P	WW: 50	YW: 92
ORR'S MS NANCY 466P	MILK: 29	SC: 0.7
ORR'S POLLED PATRIOT 967	HCW: 11	MARB: 0.1
ORR LADY WIND 338P	TSI: 237.69	
ORR'S MS WIND 847		

BW:
84Adj WW:
657**LOT ACE NCC STEEL 0010****41-10 REG: M962321 DOB: 9/4/20**

WR WRANGLER W601	CE: 10.8	BW: -1.4
ACE-ORR STEEL 351 P ET	WW: 61	YW: 103
ORR'S MS NANCY 458P	MILK: 24	SC: 0.8
ACE-ORR STEEL 351 P ET	HCW: 17	MARB: 0.15
NCC-STEEL 580	TSI: 245.74	
NCC-DOC EASY 333		

BW:
78Adj WW:
648**LOT ACE-ORR LOCK N LOAD 0115P****42-115 REG: M961997 DOB: 10/28/20**

LT LEDGER 0332 P	CE: 9.1	BW: -0.1
ACE-ORR LOCK N LOAD 243P	WW: 73	YW: 129
ORR'S MS PETUNIA 941P	MILK: 23	SC: 1.5
WR WRANGLER W601	HCW: 34	MARB: 0.18
ORR'S MS TRADITION 372P	TSI: 269.35	
ORR'S MS NANCY 917P		

BW:
89Adj WW:
778**LOT ACE NCC MO BOB 006****43-6 REG: M962313 DOB: 9/1/20**

ACE MR MO BOB 3809X	CE: 11.5	BW: -2
ACE-LT-MR MO BOB 603	WW: 63	YW: 109
LT MS MAKER 129	MILK: 26	SC: 0.6
ACE-ORR STEEL 351 P ET	HCW: 19	MARB: 0.12
NCC STEEL 731	TSI: 250.92	
NCC-DOC EASY 315		

BW:
71Adj WW:
660**LOT ACE NCC STEEL 0023****44-23 REG: M962320 DOB: 10/4/20**

WR WRANGLER W601	CE: 11.5	BW: -2.7
ACE-ORR STEEL 351 P ET	WW: 66	YW: 110
ORR'S MS NANCY 458P	MILK: 22	SC: 0.7
ACE MR DOC EASY 7113PLD	HCW: 16	MARB: 0.18
NCC-DOC EASY 340	TSI: 252.85	
MS PRIME WIND P		

BW:
71Adj WW:
729**LOT ACE-ORR CHEROKEE 053P****45-53 REG: M962015 DOB: 8/1/20**

LT LANDMARK 5052 PLD	CE: 6.7	BW: -0.7
ACE-ORR CHEROKEE 718P	WW: 56	YW: 101
ORR'S MS NANCY 466P	MILK: 23	SC: 0.6
LT BLUEGRASS 4017 P	HCW: 9	MARB: 0.1
ORR'S LADY REBA 111P	TSI: 245.53	
ORR'S LADY REBA 523 P		

BW:
85Adj WW:
652



*Photo taken after spring breeding 2020

Reference Sire: ACE LT Mr Mo Bob 603

CE:10.6 BW:-0.6 WW:69 YW:120 MILK:28 HCW:23 MARB:0.08 TSI:259.15



LOT ACE-ORR CITATION 0118P

46-118 REG: M961996 DOB: 11/8/20

LT SUNDANCE 2251 PLD	CE: 7.4	BW: -0.5
LT CITATION 5228 PLD	WW: 68	YW: 121
LT JULIE 2055 PLD	MILK: 25	SC: 1.5
RAILE SOVEREIGN J827 Y064	HCW: 24	MARB: 0.2
ORR'S TRADITION 617P	TSI: 263.88	
ORR'S MS TRADITION 352		

BW:
91

Adj WW:
756



LOT ACE NCC LEDGER 0036

47-36 REG: M962338 DOB: 10/30/20

LT LEDGER 0332 P	CE: 7.8	BW: -0.2
ACE-ORR LEDGER 743P	WW: 64	YW: 112
ORR'S MS TRADITION 979P	MILK: 21	SC: 0.9
ACE-ORR STEEL 351 P ET	HCW: 19	MARB: 0.17
NCC STEEL 759	TSI: 253.3	
NCC-DOC EASY 465		

BW:
78

Adj WW:



LOT ACE-ORR CITATION 0123P

48-123 REG: M961994 DOB: 11/25/20

LT SUNDANCE 2251 PLD	CE: 8.7	BW: -1.4
LT CITATION 5228 PLD	WW: 61	YW: 115
LT JULIE 2055 PLD	MILK: 21	SC: 1.9
M6 NEW STANDARD 842 P ET	HCW: 26	MARB: 0.29
ORR'S MS NANCY 609P	TSI: 263.54	
ORR'S MS NANCY 122P		

BW:
84

Adj WW:
689



LOT ACE NCC STEEL 0037

49-37 REG: M962317 DOB: 11/2/20

WR WRANGLER W601	CE: 8.2	BW: 2.6
ACE-ORR STEEL 351 P ET	WW: 59	YW: 101
ORR'S MS NANCY 458P	MILK: 22	SC: 0.7
ACE MR PERFECT WIND 899 ET	HCW: 15	MARB: 0.15
NCC-PERFECT WIND-TW214	TSI: 240.04	
G MISS GRID WIND P		

BW:
102

Adj WW:



LOT ACE-ORR AFFINITY 073P

50-73 REG: M962009 DOB: 9/4/20

LT RUSHMORE 8060 PLD	CE: 8.6	BW: -1.7
LT AFFINITY 6221 PLD	WW: 60	YW: 116
LT ATHENA 1247	MILK: 25	SC: 1
RBM FARGO Y111	HCW: 24	MARB: 0.14
ORR'S MS DESIGN 843P	TSI: 260.14	
ORR'S MS DESIGN 307P		

BW:
81

Adj WW:
713

**LOT ACE NCC LEDGER 0026****51-26 REG: M962328 DOB: 10/6/20**

LT LEDGER 0332 P	CE: 7.9	BW: -1.9
ACE-ORR LEDGER 743P	WW: 61	YW: 109
ORR'S MS TRADITION 979P	MILK: 21	SC: 0.9
ACE-ORR STEEL 351 P ET	HCW: 19	MARB: 0.19
NCC STEEL 758	TSI: 252.67	
NCC-DOC EASY 340		

BW: 65

Adj WW: 657

**LOT ACE-ORR PATRIOT 0121P****52-121 REG: M961995 DOB: 11/16/20**

LT LEDGER 0332 P	CE: 3.2	BW: 0.3
LT PATRIOT 4004 PLD	WW: 52	YW: 106
LK MISS RIO 2119	MILK: 27	SC: 1
M6 GRID MAKER 104 PET	HCW: 27	MARB: 0.18
ORR'S MS TRADITION 976P	TSI: 250.79	
ORR'S MS TRADITION 406ET		

BW: 89

Adj WW: 647

**LOT ACE NCC LEDGER 0040****53-40 REG: M962331 DOB: 12/12/20**

LT LEDGER 0332 P	CE: 8.2	BW: -0.5
ACE-ORR LEDGER 743P	WW: 65	YW: 113
ORR'S MS TRADITION 979P	MILK: 22	SC: 0.9
ACE-ORR STEEL 351 P ET	HCW: 19	MARB: 0.18
NCC STEEL 773	TSI: 254.42	
NCC-DOC EASY 474		

BW: 85

Adj WW: 647

**LOT ACE MR MELLOW YELLOW 025****54-025 REG: NOT REG DOB: 05/04/20**

MCC 5127 ET		
ACE MR JOSE 712		
ACE MS WIENK R-539 ET	75% AKAUSHI	
HB H5070 S	25% CHAROLAIS	
ACE MS PRIME CUT 5070-861 ET		
MCC 7205 Z		

BW: 83

Adj WW: 605

**LOT CASH MOORE FOUNDATION MO70****55-070 REG: NOT REG DOB: 09/11/20**

HB HOT DAM 9249	50% AKAUSHI
	50% CHAROLAIS

BW: 77

Adj WW: 710

ACE MISS WIENK 541 ET	100% of sale proceeds will go to THE FOUNDATION for abused children
-----------------------	---

**THE AKAUSHI CATTLE WILL SELL
AT THE CONCLUSION OF THE
CHAROLAIS BULL SALE.**

**ESTIMATED START TIME
ABOUT 2:15 PM (CST)**

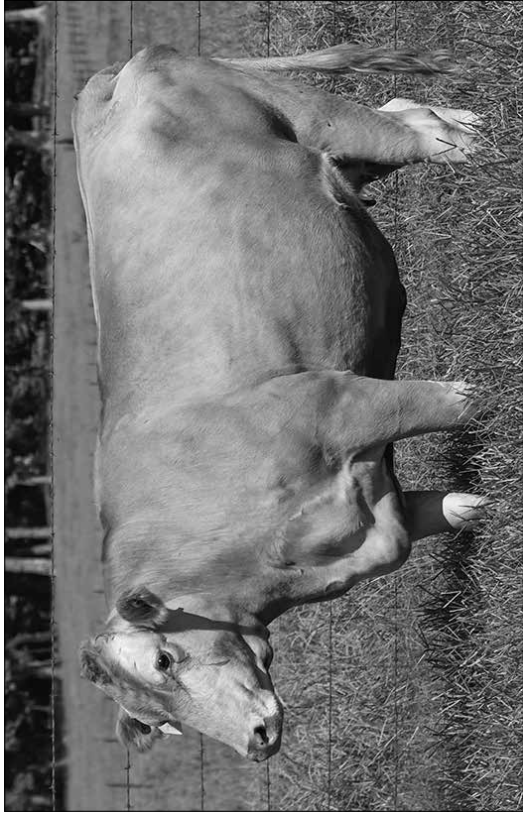
WE ARE STACKING THESE BLOODLINES IN OUR PROGRAM



ACE-AGF TANK 916 ET (AF161827)

Tank 916 ET was our top selling bull in 2021. One half interest sold to Amazing Grace Farms, Nick and April Patterson, Red Boiling Springs, TN for \$11, 200.

This high growth Rhubarb son is out of 7228Z, one of our featured foundation sister donors. She was sired by Tamamaru out of a Hikari daughter.



MCC 7228Z (AF21722)



Heartbrand RHUBARB 2142A

In January 2022, his brother JC Rueshaw 75, set a world record selling price for all Japanese cattle. Marbling plus eye appeal was in demand.



AKIKO 354B

Akiko is a preeminent conformation and carcass improving cow with high marbling potential coming from both sides of her pedigree. In the 1993 paper "Sire Effects on Carcass Traits for Japanese Brown Cattle," her sire Naminmaru was ranked #8 in marbling score and her maternal grandfather Mitsutake was ranked #2, only behind his son Mitsushige ET. Akiko is known for producing exceptionally fertile offspring with strong top-lines, deep chests, and calm temperaments. If there was such a thing as Akaushi Royalty, Akiko would surely be "The Queen."

HB Big AL and HB Come and Take It are two of her direct sons that are certainly breed leaders. We believe the power of Akiko 354B is displayed in her descendants.

AKAUSHI REFERENCE SIRES

HEARTBRAND RHUBARB 2142A

There are lots of adjectives that could be used to describe this herd sire. Our is "WOW." He has done it all for us. Not only is he a son of Rueshaw 430 (Semen \$4000 straw), he is out of a Big Al daughter. Last spring, we sold a few daughters that have already made the new owners donor pens.

	CED	BW	WW	YW	MILK	REA	FAT	MARB
EPD	3	2.9	49	85	28	0.43	0.002	0.04
ACC	0.54	0.71	0.47	0.009	0.13	0.09	0.11	0.01

HEARTBRAND JOE S5394S

The first Akaushi semen we purchased to flush with was Joe. At the time, his photo was used as the ideal breed type. At the age of ten, he was still in the breeding pasture doing his job.

	CED	BW	WW	YW	MILK	REA	FAT	MARB
EPD	0	3.4	55	93	26	0.54	0.008	0.04
ACC	0.73	0.88	0.77	0.17	0.55	0.26	0.54	0.05

HEARTBRAND S5296S

Is a full brother in blood to Joe. Our top selling bull in 2020 was sired by 5296. We are selling full brothers and sisters this spring.

	CED	BW	WW	YW	MILK	REA	FAT	MARB
EPD	3	1.6	45	78	22	.45	-0.014	-0.28
ACC	0.48	0.62	0.45	0.12	0.32	0.20	0.37	0.04

COME AND TAKE IT

This outstanding son of Akiko, "The Queen," was sired by Heartbrand H0518E. There is lots of history behind this sire. He would be the same as a 100% Japanese import.

	CED	BW	WW	YW	MILK	REA	FAT	MARB
EPD	0	0.9	26	57	33	0.37	0.06	-0.12
ACC	0.46	0.68	0.50	0.12	0.33	0.23	0.38	0.04

EL PADRINO 733D

This grandson of Big Al is a polled purebred that we used in our embryo program. This young sire met all of our selection criteria plus he carries the polled gene.

	CED	BW	WW	YW	MILK	REA	FAT	MARB
EPD	0	0.9	40	74	28	0.47	-0.005	0.11
ACC	0.12	0.08	0.08	0.02	0.06	0.05	0.05	0.01

BREEDING PLAN

It was very important to us that we used time-tested foundation genetics for our ET program.

Our second criteria would be E.P.D.'s, however, calculations predicted on limited input basically from one source can be misleading and most often have low accuracies.

As the breed expands, more data will be collected, and accuracies will improve. At this point and time, calving ease with growth is our performance focus.

E.P.D.'s will become more important to us in the future.

ACTUAL VS. ADJUSTED

For our Akaushi fullblood bulls, we chose to display actual weights from birth to sale time.

Next, weaning weights reflect a mother's milking ability. Embryos are not raised by their biological mothers.

Over our 25 years of experience using embryo transfer, both birth weight and weaning weight can be influenced by the segregate mothers.

Weights presented are actual with no adjustments. The first weight is at birth, the second weight was taken 3-18-21. The third weight was taken 1-27-22.

POLLED ALERT: DNA Tested heterozygous polled (scurs)
056 is a double bred Big Al



LOT ACE PRIME CUT EL PAD - 056 ET
60-056 REG: AP199688 DOB: 8-31-20

HEARTBRAND V7022U	BW:
EL PADRINO 733D	85
RANCHO ESPUELA 174A	690
HEARTBRAND JOE S5394S	1220
MCC 7205Z	
HEARTBRAND B2746R	



LOT ACE MR PRIME CUT S5296S-06 ET
61-06 REG: AF179563 DOB: 3-28-20

SHIGEMARU	BW:
HEARTBRAND S5296S	71
HEARTBRAND B0905J	N/A
TAMAMARU	1405
MCC 754Y	
HEARTBRAND S1754P	



LOT ACE MR PRIME CUT S5296S-010 ET
62-010 REG: AF179562 DOB: 4-1-20

SHIGEMARU	BW:
HEARTBRAND S5296S	78
HEARTBRAND B0905J	N/A
TAMAMARU	1275
MCC 754Y	
HEARTBRAND S1754P	

FULL SISTER DONORS



708Y (AF11031)



7205Z (AF21686)

**Sire: Heartbrand Joe
Dam: Big Al Daughter**

The thick and powerful donor 7205Z is the mother of full sibs - Lots 60, 64, 66, & 83.



LOT ACE MR PRIME CUT RHUB 050 ET

63-050 REG: AF199684 DOB: 8-25-20

RUESHAW 430
HEARTBRAND RHUBARB 2142A
HEARTBRAND BARBARA B3518R
TAMAMARU
MCC 754Y
HEARTBRAND S1754P

**BW:
77**

695

1260



LOT ACE MR PRIME CUT EL PAD - 051 ET

64-051 REG: AP199685 DOB: 8-26-20

HEARTBRAND V7022U
EL PADRINO 733D
RANCHO ESPUELA 174A
HEARTBRAND JOE S5394S
MCC 7205Z
HEARTBRAND B2746R

**BW:
89**

740

1165



REFERENCE SIRE: ACE MR PRIME CUT 5296 960 ET

960 ET was our top selling bull in 2020. He sold for \$6700 to J-H Meat Store in Joplin, MO.

Lot numbers 61, 62, 75, 76, 77 and 78 are full sibs to 960 ET.



LOT CIRCLE K 2949 ET

65-2949 REG: AF192949 DOB: 8-29-20

SHIGEMARU	BW:
HEARTBRAND JOE S5394S	75
HEARTBRAND B0004M	
HEARTBRAND B4652S	625
HEARTBRAND 7850D	
HEARTBRAND T1882P	1145



LOT ACE MR PRIME CUT EL PAD - 054 ET

66-054 REG: AP199686 DOB: 8-30-20

HEARTBRAND V7022U	BW:
EL PADRINO 733D	83
RANCHO ESPUELA 174A	
HEARTBRAND JOE S5394S	625
MCC 7205Z	
HEARTBRAND B2746R	1235



LOT ACE MR PRIME CUT RHUB 061 ET

67-061 REG: AF199689 DOB: 9-5-20

RUESHAW 430	BW:
HEARTBRAND RHUBARB 2142A	65
HEARTBRAND BARBARA B3518R	
TAMAMARU	610
MCC 754Y	
HEARTBRAND S1754P	1165



FOUNDATION SISTER DONORS

7228Z (AF21722)

754Y (AF11063)



LOT CIRCLE K 2946 ET

68-2946 REG: AF192946

DOB: 9-5-20

SHIGEMARU	BW:
HEARTBRAND JOE S5394S	75
HEARTBRAND B0004M	550
HEARTBRAND 5956C ET	1150
HEARTBRAND 9726E	
HEARTBRAND 1493Z	



LOT CIRCLE K 2952 ET

69-2952 REG: AF192952

DOB: 9-10-20

SHIGEMARU	BW:
HEARTBRAND JOE S5394S	70
HEARTBRAND B0004M	545
HEARTBRAND 5956C ET	1035
HEARTBRAND 9726E	
HEARTBRAND 1493Z	



LOT ACE MR PRIME CUT H.D. 073

70-073 REG: AF199694

DOB: 9-14-20

HEARTBRAND T3983S	BW:
HB HOT DAMN 9249E	81
HEARTBRAND 8536W	590
TAMAMARU	1195
MCC 7228Z	
HEARTBRAND H1146P	

**LOT CIRCLE K 7532 ET****71-7532 REG: AF197532 DOB: 10-8-20**

HEARTBRAND CHARLIE C4037S
 HEARTBRAND 3199A
 HEARTBRAND V7494U
 TAMAMARU
 HEARTBRAND 2286A
 HEARTBRAND B0029L

BW:**80****530****1010****LOT CIRCLE K 2944****72-2944 REG: AF192944 DOB: 10-10-20**

HEARTBRAND H0518E
 COME AND TAKE IT
 AKIKO
 HEARTBRAND 3458B
 HEARTBRAND 0106E
 HEARTBRAND 1985A

BW:**60****460****900****LOT CIRCLE K 2950****73-2950 REG: AF192950 DOB: 10-18-20**

HEARTBRAND H0518E
 COME AND TAKE IT
 AKIKO
 HEARTBRAND 5956C ET
 HEARTBRAND 9726E
 HEARTBRAND 1493Z

BW:**65****520****1030****LOT ACE MR PRIME CUT H.D. 085****74-085 REG: AF199696 DOB: 10-12-20**

HEARTBRAND T3983S
 HB HOT DAMN 9249E
 HEARTBRAND 8536W
 TAMAMARU
 MCC 754Y
 HEARTBRAND S1754P

BW:**73****490****910**



MCC 754Y (AF11063)

754Y is one of the sister foundation donors. This female is sired by TAMAMARU out of a SHIGEMARU daughter.

She has four sons and ten daughters in this sale.

In addition to the fullbloods, we flushed her to one of the best all around Charolais bulls, Grid-maker. They produced 1/2 blood heifers Lots 84, 85 and 86.

BRED FULLBLOOD HEIFERS DUE SPRING 2022



LOT ACE MS PRIME CUT S5296S-03 ET

75-03 REG: AF179558 DOB: 3-24-20

SHIGEMARU
HEARTBRAND S5296S
HEARTBRAND B0905J

BW:
56

TAMAMARU
MCC 754Y
HEARTBRAND S1754P



LOT ACE MS PRIME CUT S5296S-08 ET

76-08 REG: AF179557 DOB: 3-31-20

SHIGEMARU
HEARTBRAND S5296S
HEARTBRAND B0905J

BW:
67

TAMAMARU
MCC 754Y
HEARTBRAND S1754P

**SERVICE SIRE WAS 918 ET -
A FULL BROTHER TO TANK 916 ET**

FALL CALVING FULLBLOOD HEIFERS

The fall fullblood heifers listed below were AI'd to
Dos Equis - a homozygous polled bull.



LOT ACE MS PRIME CUT 5296 - 041 ET
77-041 REG: AF199679 DOB: 8-15-20

SHIGEMARU BRED AI 1-7-22 **BW: 61**
HEARTBRAND S5296S
HEARTBRAND B0905J

TAMAMARU
MCC 754Y
HEARTBRAND S1754P



LOT ACE MS PRIME CUT 5296 - 045 ET
78-045 REG: AF199680 DOB: 8-20-20

SHIGEMARU BRED AI 12-26-21 **BW: 75**
HEARTBRAND S5296S
HEARTBRAND B0905J

TAMAMARU
MCC 754Y
HEARTBRAND S1754P



LOT ACE MS PRIME CUT RHUB 047 ET
79-047 REG: AF199682 DOB: 8-21-20

RUESHAW 430 BRED AI 12-26-21 **BW: 61**
HEARTBRAND RHUBARB 2142A
HEARTBRAND BARBARA B3518R

TAMAMARU
MCC 754Y
HEARTBRAND S1754P



LOT ACE MS PRIME CUT RHUB 048 ET
80-048 REG: AF199683 DOB: 8-21-20

RUESHAW 430 BRED AI 12-26-21 **BW: 45**
HEARTBRAND RHUBARB 2142A
HEARTBRAND BARBARA B3518R

TAMAMARU
MCC 754Y
HEARTBRAND S1754P



LOT ACE MS PRIME CUT RHUB 055 ET
81-055 REG: AF199687 DOB: 8-31-20

RUESHAW 430 BRED AI 1-22-22 **BW: 67**
HEARTBRAND RHUBARB 2142A
HEARTBRAND BARBARA B3518R

TAMAMARU
MCC 754Y
HEARTBRAND S1754P BRED AI 1-22-22



LOT ACE MS PRIME CUT HOT 016
82-016 REG: PENDING DOB: 6-26-20

HEARTBRAND T3983S BRED AI 1-22-22 **BW: 74**
HB HOT DAMN 9249E
HEARTBRAND 8536W

MCC729Y
ASCHERMANN C0392 721E
MCC 7219Z

BRED HEIFERS



LOT ACE PRIME CUT EL PAD - 046 ET

83-046 REG: AP199681 DOB: 8-20-20

HEARTBRAND V7022U
EL PADRINO 733D
RANCHO ESPUELA 174A

BRED 2-4-22 TO
LOT 70

BW:
56

HEARTBRAND JOE S5394S
MCC 7205Z
HEARTBRAND B2746R

Listed Below: These 1/2 blood bred heifers are due to calve in the spring of 2022. These 5 heifers are from our ET program.



LOT ACE MS GRID MAKER 104-01 ET

84-01 REG: GC179559 DOB: 3-24-20

WCR SIR TRADITION 066
M6 GRID MAKER 104 PET
VCR MISS LAC IV317

BW:
61

TAMAMARU
MCC 754Y
HEARTBRAND S1754P



LOT ACE MS GRID MAKER 104-02 ET

85-02 REG: GC179556 DOB: 3-24-20

WCR SIR TRADITION 066
M6 GRID MAKER 104 PET
VCR MISS LAC IV317

BW:
56

TAMAMARU
MCC 754Y
HEARTBRAND S1754P



LOT ACE MS GRID MAKER 104-04 ET

86-04 REG: GC179561 DOB: 3-27-20

WCR SIR TRADITION 066
M6 GRID MAKER 104 PET
VCR MISS LAC IV317

BW:
61

TAMAMARU
MCC 754Y
HEARTBRAND S1754P

The Charolais donor cow 667 is one of the elite females in the breed. She is a full sister to the legendary ACE-ORR Lock N Load 243P. This sire was a many time leader for TSI for the Charolais breed.



LOT NOT REGISTERED

87-012 REG: NO REG DOB: 4-1-20

HEARTBRAND T3983S
HB HOT DAMN 9249E
HEARTBRAND 8536W

BW:
78

ACE COW 667



LOT NOT REGISTERED

88-015 REG: NO REG DOB: 4-4-20

HEARTBRAND T3983S
HB HOT DAMN 9249E
HEARTBRAND 8536W

BW:
82

ACE COW 667

SERVICE SIRE WAS 918 ET -
A FULL BROTHER TO TANK 916 ET

**ALL OF THE CATTLE ON THIS PAGE
WILL BE SOLD BY THE POUND.**

1. Cattle will be weighed before the sale.
2. The base price will be determined at the auction.
3. A \$.25 per pound genetic premium will be added in the office.
4. The final price to be paid will be base plus the premium.

LOT 89 - 4 HD - 3/4 blood Akaushi yearling heifers

LOT 90 - 3 HD - 1/2 blood Akaushi yearling heifers

LOT 91 - 2 HD - 3/4 blood Akaushi yearling steers

LOT 92 - 3 HD - 1/2 blood Akaushi yearling steers

FAT CATTLE 3/4 AND 1/2 BLOOD AKAUSHI

These heifers were fed a growing ration all summer.
October 1, 2021 - they were started on a finishing ration.
Local processing dates are available.

LOT 93

LOT 94

LOT 95

LOT 96

LOT 97

LOT 98

LOT 99

LOT 100

OUR AKAUSHI STORY

WE ARE OFFERING...

THE NEW GENERATION OF OLD GENETICS

In 2013, we took a chance and bought twenty straws of Akaushi semen to A.I. some of our Charolais heifers. To say I was a skeptic would be an understatement. Most promoters of any breed overstate all the great attributes their breed offers. For our experiment, we used the same selection criteria that we used when starting our Charolais program in 1993: eye appeal, disposition, fescue tolerant, and sound feet and legs. Akaushi checked all the boxes and then some, giving us more growth than expected.

Fast forward to early 2017. Combining our premium grading Charolais with front-end Akaushi sires from Heartbrand, we developed a herd of F1's. Using both A.I. and E.T. our experiment had exciting results. Our next step was to purchase foundation Akaushi females for embryo production. We only wanted genetics that were direct descendants of the original imports that also met our original selection criteria. This was a big challenge given the fact that the only fullblood imports were three bulls and eight cows about thirty years ago. After extensive research, we found what we wanted with the purchase of five fullblood females.

As 2022 rolls around, our excitement for this Japanese breed has increased. Over the past years, we have discovered Akaushi fertility is outstanding with embryo and semen production - way better than other breeds we have sampled. Based on our previous three auctions, we found there is more demand at the grass roots level in our area than we expected. Considering Akaushi is relatively new and most cattlemen have never heard of these genetics.

Lastly, but most important, is the taste and tenderness of the meat. It is unique and delicious. We fed the F1's that did not produce as breeding cattle just as a commercial feedlot would. The meat sold direct and each carcass was sampled by us. Surveys were taken and buyers without exception said they wanted more!

“The beginning is the most important part of any work” - Author Unknown



ASCHERMANN
CHAROLAIS / AKASHI

734 Belle Aire Place
Carthage, MO 64836

**Remember to bring this catalog
to the sale on March 19!**