



# INTO THE LIGHT

COMPANY

PROFILE

2024





**“ GENIUS IS 1% INSPIRATION  
AND 99% PERSPIRATION. “**

THOMAS ALVA EDISON

# INDEX

- IDENTITY & VISION
- OUR SERVICES
- INDOOR LIGHTING
- OUTDOOR LIGHTING
- SPECIAL APPLICATIONS
- PARTNERS
- PROJECTS
- CONTACT





# We put, **TALIA TRADE**

On the map in the GCC through hard work, a dedicated team of Integrated Lighting Solutions Specialists with 30 years of experience, Close-knit Creatives, Strategists, and Global Leading Partners. Our work is recognized for its personality and deep attention to detail, known by our clients as a committed partner who delivers on time.

**TALIA TRADE** pride itself on providing a wide variety of cutting-edge technologies in lighting. We know how to turn all your most courageous design ideas into reality.

We strongly believe that there is no limit for the light to express the sense of style and to create the atmosphere for any kind of occasion. The touch of light can completely change the perception of familiar places and make them more valuable, remarkable, and magnificent.

For these reasons,

**TALIA TRADE** aims to share the combined benefits of quality, design, and functionality. We are introducing state-of-the-art eco-friendly concepts that transform standard living environments into brilliant breathtaking places that deliver simplicity, flexibility, reliability, and most of all quality.



## Vision & COMMUNITY

We believe that the prosperous evolution of a single idea can only be achieved with the true dedication of a professional touch. Where the highest levels of commitment assure the best results from our end, using the most updated tools in technology and art.

We are committed to providing our customers with value in lighting solutions products and services, capitalizing on our qualified human assets and our best deep market knowledge. We achieve this through utilizing our wide sales and distribution network, our supply chain expertise, and our partnership with leading lighting and technology.

**TALIA TRADE** is perceived as a customer-friendly business approach, not just a company, we always strive to use eco-friendly material. Resources and equipment in innovating our systems before and after installation

WE believe that the future can be conserved today, no need to wait till tomorrow. Our Eco-friendly systems help to reduce carbon footprint, assuring higher efficiency and better performance for all systems from **TALIA TRADE**.



# UP to FIVE years WARRANTY

**TALIA TRADE** is proud to announce that our impressive range of products from different brands are provided with up to 5 years warranty for both efficiency and performance.

We deal with international factories for the best-LED devices and LED drivers, to ensure an efficient lighting devices delivery

All our products are notable for their high quality. Long life, low energy consumption, low maintenance, and the ability to customize for the needs of our valuable clients.



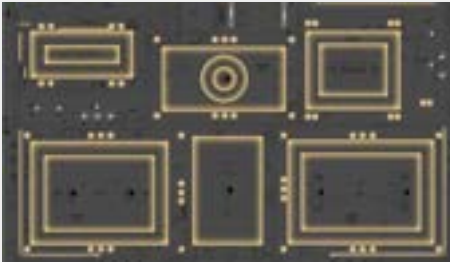


# INTO THE LIGHT

A black and white photograph of a hand holding a pen, pointing at a set of architectural blueprints. The blueprints are detailed with lines, circles, and text, including labels like "WOMEN WASHROOM", "MEN WASHROOM", and "PROJECT COORDINATOR". The hand is positioned in the lower-left quadrant, with the pen tip pointing towards the center-right of the image.

# TALIA TRADE SERVICES





**LIGHTING DESIGN:** Note that this is an outline of the typical services provided by **TALIA TRADE**. Please contact us to discuss any potential projects and receive a full fee proposal with detailed scope of services and deliverables.



**LIGHTING SUPPLY:** When it comes to quality, we always make sure to provide the best of it. Light fittings with good quality contribute to the appearance of design as it should be and better.



**VALUE ENGINEERING:** With increasing budget constraints most projects enter a downward spiral of cost-saving exercises, which lead to meagre aesthetic results and poor-quality products. At **TALIA TRADE** we follow a conscious and realistic value-engineering process, by identifying what is essential, what is preferable and what is secondary in a project.



**LIGHTING MASTER PLANNING:** In large scale and urban development projects a lighting master plan is necessary to guarantee the aesthetic and performance consistency of the project.

A photograph of a modern living room interior. The room features a large, light-colored sectional sofa, a black coffee table, and a white armchair. The walls are a neutral tone, and the ceiling has recessed lighting. The room is illuminated by warm, ambient lighting, including recessed ceiling lights, a long light strip under the TV console, and a vertical light strip on the wall. The overall atmosphere is cozy and sophisticated.

# INDOOR LIGHTING SYSTEMS AND SOLUTIONS



# GENERAL INDOOR

Maximum versatility and integration: we develop indoor lighting systems that perfectly interact with architecture, favoring the balance between natural and artificial light. Our high-tech lighting solutions solve any spatial requirements, respecting the characteristics of each project.





# OFFICE INDOOR

Today's workspaces require new design directions. Putting people at the heart of the project, we study lighting systems and solutions to create efficient, comfortable, and functional work areas. Waiting rooms, meeting rooms, work and circulation spaces: the lighting in offices should promote both dynamism and concentration and provide highly efficient solutions that are essential for stimulating creativity and improving the team's performance.





## RETAIL INDOOR

In the design of a shop, the lighting systems guide the customer and accompany them on their purchasing itinerary. The customer's attention is therefore managed wisely. We work on a comprehensive project that embraces the different functional and exhibition areas of the shop. The result is an intelligent lighting system that combines technology, colour rendition, energy efficiency, and flexibility.

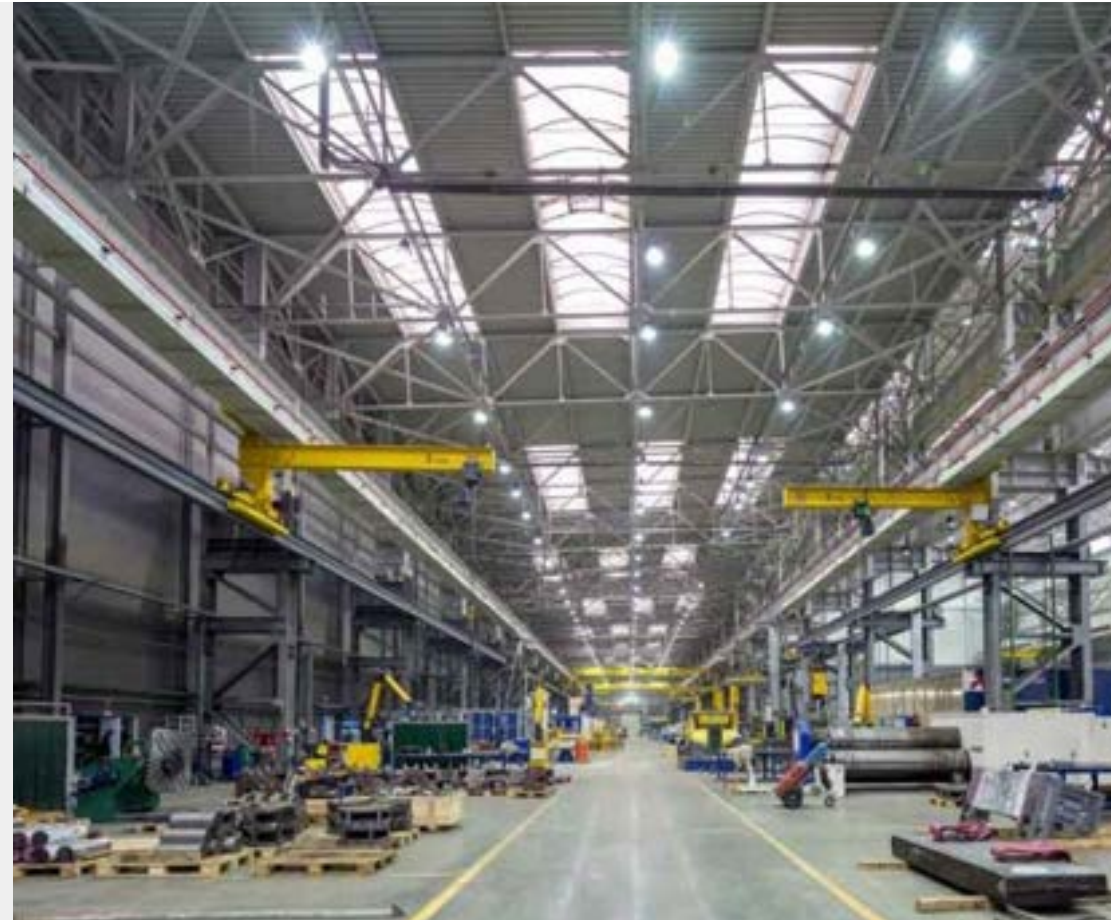






# INDUSTRIAL INDOOR

In the industrial sector, where the settings can be subject to harsh conditions, we think of energy-efficient, resistant, and durable lighting solutions. We pay the greatest attention to reducing energy consumption and maintenance costs, guaranteeing maximum safety standards in the workplace and maximum visual comfort for workers. In facilities that often have a high design complexity, we provide flexible and easy to manage lighting systems that guarantee significant energy savings.





# OUTDOOR LIGHTING

SYSTEMS AND SOLUTIONS



# GENERAL OUTDOOR

We study highly efficient solutions that combine efficiency and durability. Lighting for urban parks, streets, gardens, stadiums, sports fields, historic homes, or holiday homes: the outdoor lighting design includes a variety of solutions suited to each context, both public and private. For us, safety and durability are always first.

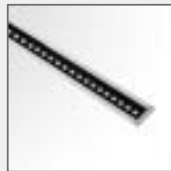






# ARCHITECTURAL OUTDOOR

Technology, design, and innovation. Our lighting systems emphasize shapes and enhance the material for a unique final result, shaping an idea. The light becomes an integral part of the creative process, we give an answer to each need in terms of aesthetics and functionality. With our high-tech fixtures, we offer the possibility of adjusting the intensity and the colour of the led source, in addition to numerous optical variants.





## PROFESSIONAL OUTDOOR

From the lighting of sports facilities to metro station lighting, from stadiums to the façades of the most important buildings: where the complexity and technological innovation comes into play, and the extent of the range of characteristics is the key. Our lighting systems are perfectly capable of meeting the highest standards required by the project and regulations. Specialized and complex structures require highly specialized solutions





## URBAN OUTDOOR

A custom-made lighting solution for each urban area: streets, car parks, squares, green areas, playgrounds, bridges, pedestrian streets. We create versatile urban lighting systems that combine collective and individual interests. We want to offer urban spaces a new identity, and improve the perception of those who live in and use them.





# SPECIAL APPLICATIONS

## SYSTEMS AND SOLUTIONS



# HEALTH CARE LIGHTING

Pioneering healthcare lighting solutions for optimal patient care and well-being. Enhancing medical facilities with cutting-edge illumination technology. Your partner in creating brighter, healthier environments







# AVIATION LIGHTING

Talia trade provide a special application for the aviation light solution like Airfield Ground Lighting (AGL) Systems for Runways and Helipads, Navigational Aids and Instrument Landing Systems, in accordance with the International Civil Aviation Organization (ICAO) and The Federal Aviation Administration (FAA) recommendations.





# ANTIEXPLOSION LIGHTING

Providing industrial lighting solutions for efficient operations and safety compliance. Enhancing productivity and visibility in industrial settings. Your trusted partner in illuminating the industrial landscape.





# CONTROL AND EMERGENCY LIGHTING

Delivering reliable emergency lighting solutions for safety and compliance. Ensuring continuous illumination during critical situations. Your trusted partner in emergency preparedness.





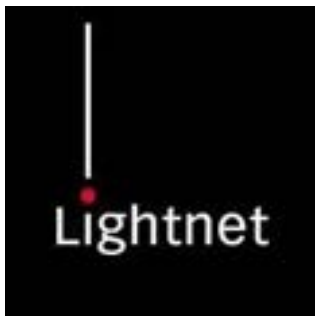


## PARTNERS





# PARTNERS





# PARTNERS





## PARTNERS





# PROJECTS



< Emirates Policy Centre >



# PROJECTS



< Street light - Ras Alkheimah >



# PROJECTS



< Cloud9 –Kuwait >





## PROJECTS



< Solar Street light – Sport City Dubai >





# PROJECTS



< UFC GYM DUBAI & AJMAN >



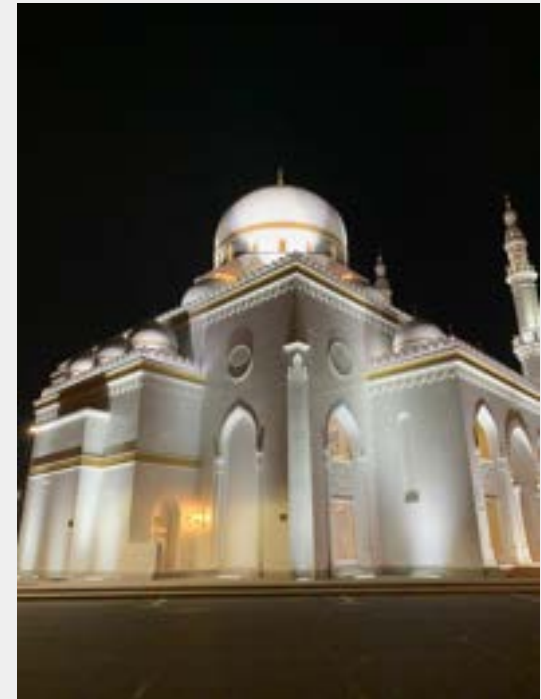
# PROJECTS



< Solar Garden light – JVC Dubai >



## PROJECTS



< Masjid Al Mouhaisneh >





# PROJECTS



< Flash Entertainment – Abu Dhabi >



## PROJECTS



< Al Fardan Jewellery –Dubai Mall >

**THANK YOU**



T: +971 4 337 5244

M: +971 54 247 0949

[info@taliatrade.com](mailto:info@taliatrade.com)

[www.taliatrade.com](http://www.taliatrade.com)

---

Office 2705, The Prime Tower,  
Business Bay, Dubai – UAE

P.O.Box 417336 Dubai