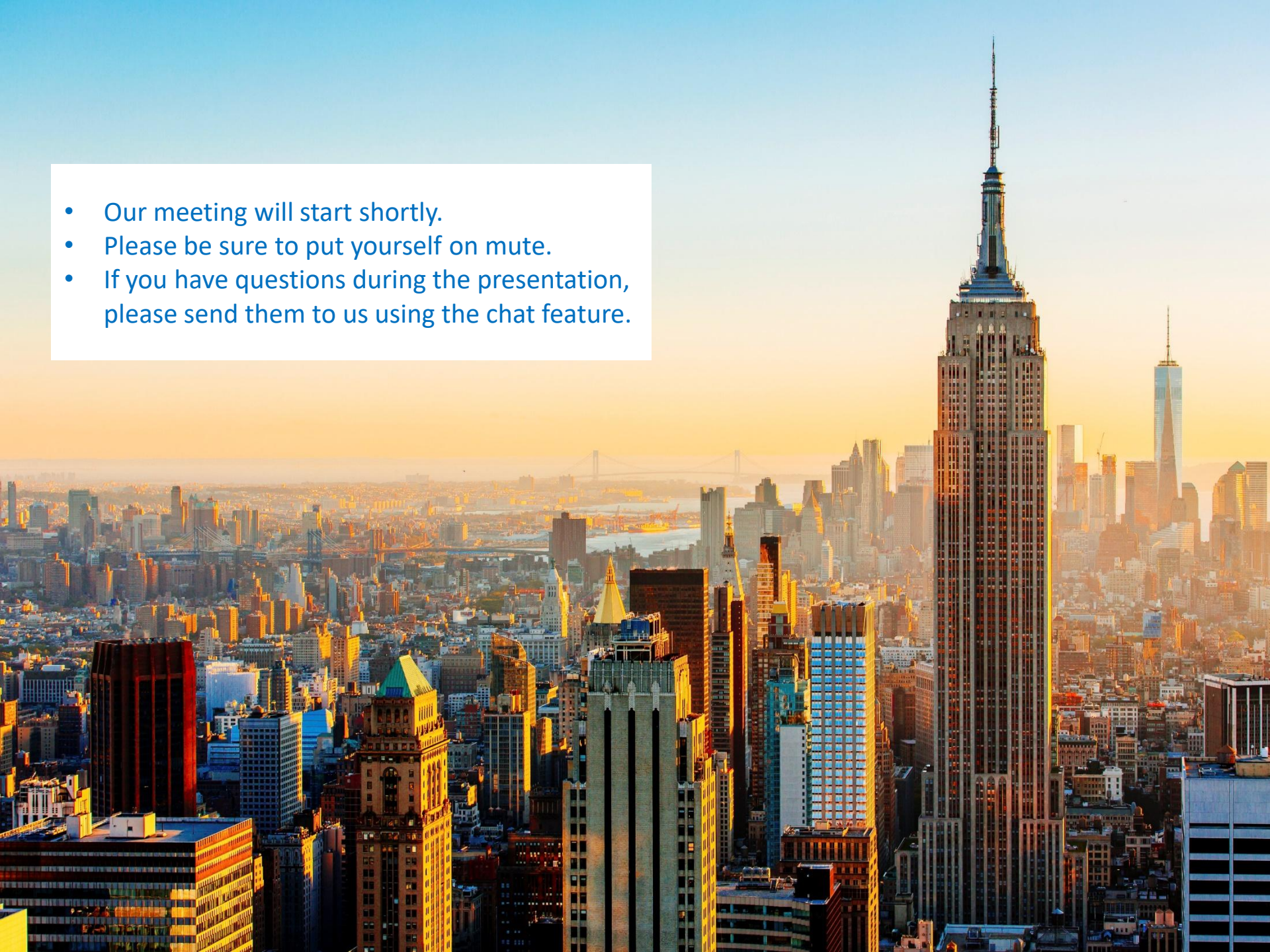


- Our meeting will start shortly.
- Please be sure to put yourself on mute.
- If you have questions during the presentation, please send them to us using the chat feature.



City of New York

NYC Medicare Advantage Plus

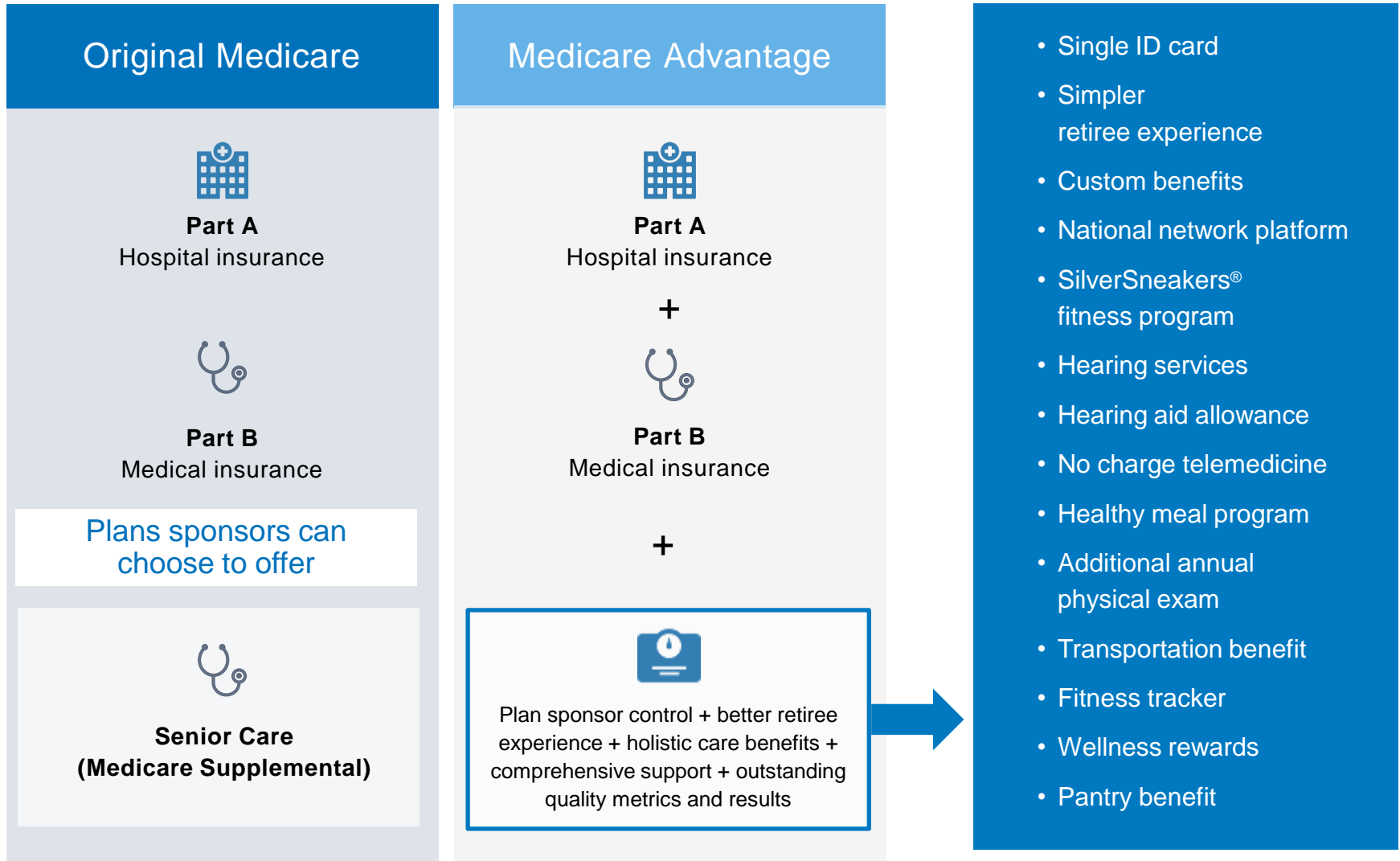
Continuing our healthcare journey, *together.*



Medicare Advantage Plus Overview

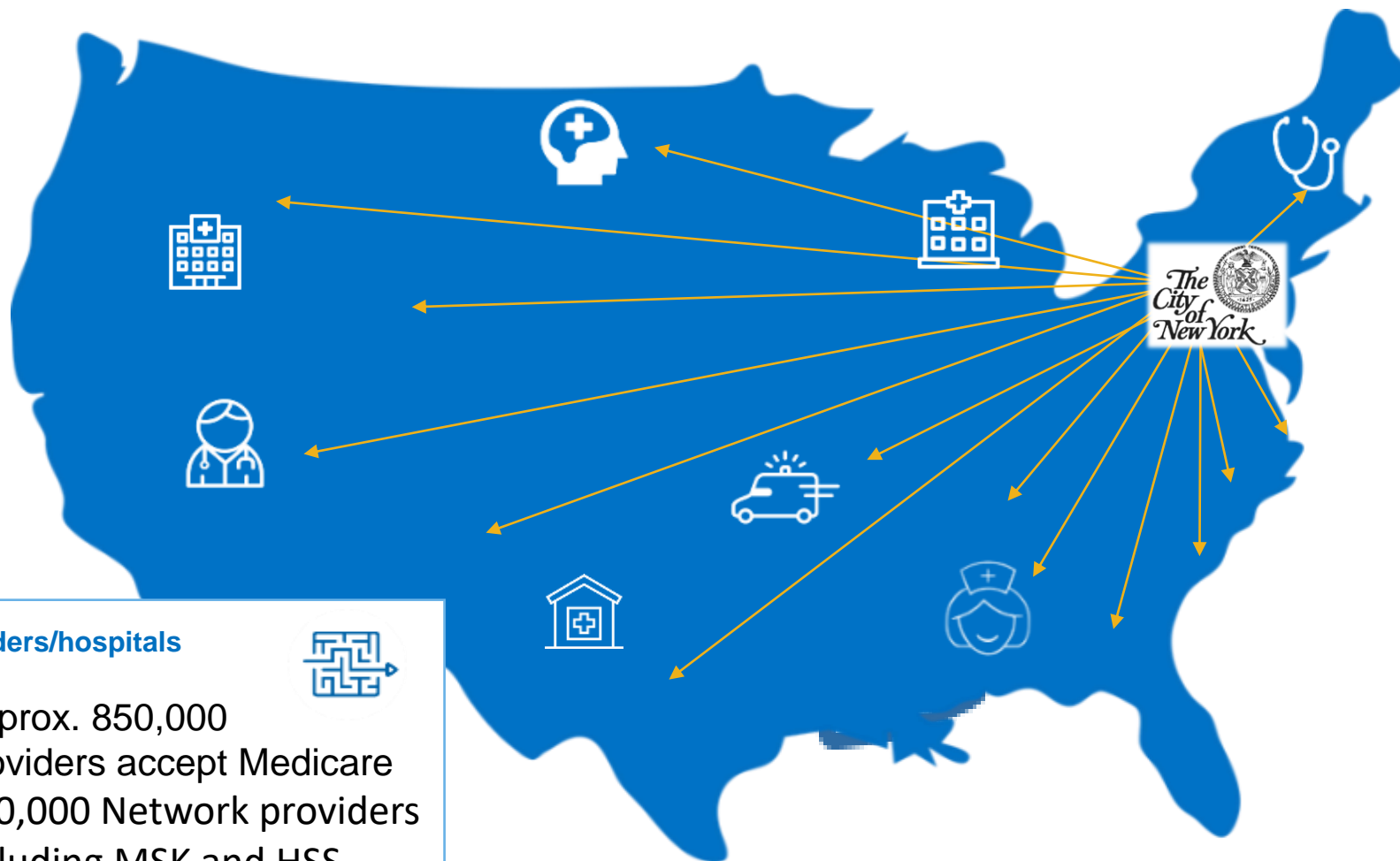
- › Medicare Advantage Plus structure
- › National Provider Access
- › Enhancements
- › Benefit Comparison
- › Rx Plan Update
- › Member Q & A

Retirees have a simpler, richer experience, compared to Original Medicare



Care for the City of New York's retirees

Members can continue to see any doctor that accepts Medicare, just as they do today



Providers/hospitals



- Approx. 850,000 providers accept Medicare
- 640,000 Network providers
- Including MSK and HSS

Plus, a new Blue Cross Blue Shield Association (BCBSA) commitment to strengthen provider collaboration nationwide and close gaps in care

2 easy ways to find a doctor

Multiple ways to find doctors in your provider network



empireblue.com/nyc-ma-plus

Visit “Find Care” at empireblue.com/nyc-ma-plus
to find a **NYC Medicare Advantage Plus** provider

Step 1: Go to empireblue.com/nyc-ma-plus

Step 2: click on **Find Care** found in the middle of the page

Step 3: Enter your **City, County or Zip Code**

Step 4: Enter the **provider specialty, provider name, NPI or license number** of the provider you are searching for



**NYC Medicare Advantage Call
Center**

Call our toll-free number

833-325-1190

Enhancements that come with the NYC Medicare Advantage Plus



Silver Sneakers
fitness program



Concierge
Health Guide



Non Emergency
Transportation



Telehealth with
LiveHealth Online



Healthy meals



Healthy pantry



Wellness Rewards



Sydney Mobile App



24/7 Nurseline



ER/urgent care
when traveling



Special offers



Medicare Community
Resource Support



Routine foot care



Health and
fitness tracker



Care
Coordination

Benefit Comparison Highlights

Medical Benefits	*2022 GHI/EBCBS Senior Care	NYC Medicare Advantage Plus
	Member Pays	Member Pays
	In-Network and Out-of-Network	In-Network and Out-of-Network
Annual Deductible	\$253 combined in-network and out-of-network (\$203 Medicare Part B deductible and \$50 Plan Deductible)	\$253 combined in-network and out-of-network
Annual Maximum Out-of-Pocket**	Unlimited	\$1,470 combined in-network and out-of-network
Inpatient Benefits	In-Network and Out-of-Network	In-Network and Out-of-Network
Inpatient Hospital Care (Including Mental Health/ Substance Abuse)	\$300 per admission/\$750 per person maximum per calendar year	\$300 per admission/\$750 per person maximum per calendar year
Skilled Nursing Facility Care 100 days each benefit period	\$0 co-insurance for days 1-100	\$0 copay for days 1-100
Outpatient Benefits	In-Network and Out-of-Network	In-Network and Out-of-Network
Primary Care Physician (PCP) Visits	\$15 copay***	\$0 copay
Specialist Visits	\$15 copay***	\$15 copay
Emergency Outpatient Care	\$50 co-payment per visit***	\$50 copay, waived if admitted within 72 hours
Dialysis	\$0 copay***	\$0 copay

* For 2022, the GHI/EBCBS Senior Care Plan includes a \$15 PCP & Specialist Copay

** Annual Maximum Out-of-Pocket does not include RX

*** Plan pays 20% after Medicare Part B pays 80% of reasonable and customary charges

CONFIDENTIAL AND PROPRIETARY. Any use of this material without specific permission from Anthem is strictly prohibited.

City of New York Enhanced Prescription Drug Plan 2022

- Premier Access Open Formulary
- 90 Days Supplies Retail & Mail
- Broad Pharmacy Network
- Rate: **\$125** per member per month

Initial Coverage

- NO Deductible
- Tier 1 Preferred Generics: 25%
- Tier 2 Preferred Brand: 25%
- Tier 3 Non-Preferred Drug: 25%
- Tier 4 Specialty: 25%
- Initial Coverage Drug Spend Limit \$4430

Coverage Gap

- Tier 1 Preferred Generics: 25%
- Tier 2 Preferred Brand: 25%
- Tier 3 Non-Preferred Drug: 25%
- Tier 4 Specialty: 25%

Catastrophic Coverage

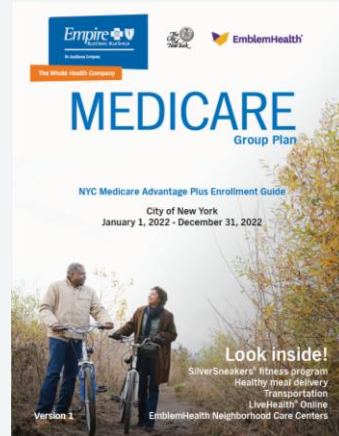
- Tier 1 Preferred Generics: \$3.95/5%
- Tier 2 Preferred Brand: \$9.85/5%
- Tier 3 Non-Preferred Drug \$3.95 & \$9.85/5%
- Tier 4 Specialty: \$3.95 & \$9.85/5%
- TrOOP \$7050

Member Communications

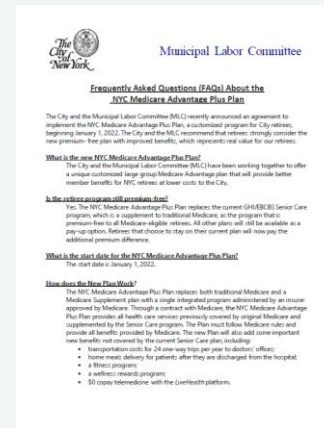
Mailed to Retirees



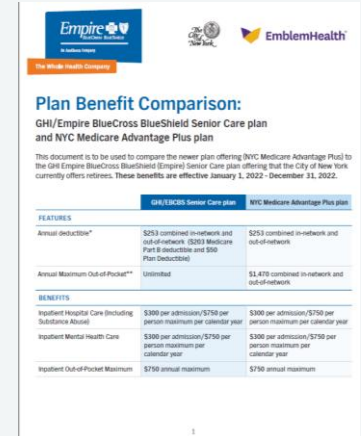
Notice of Change (August)



Enrollment guide (September)



FAQ's (September)



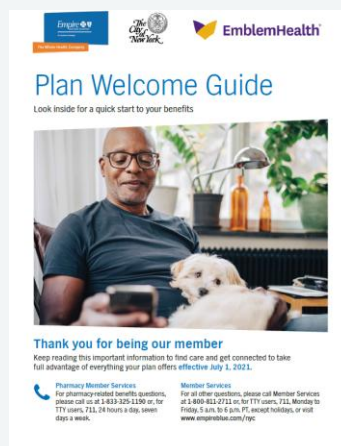
Senior Care Plan Comparison (September)

Welcome kit and ID card mailings

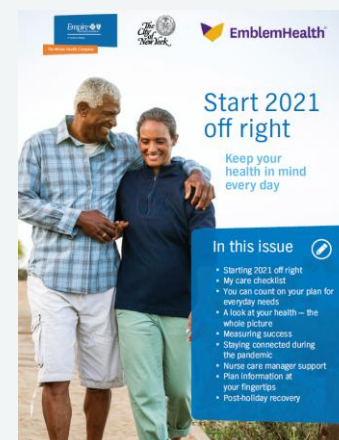
Mailing to enrolled retirees prior to effective date

Empire Blue Cross of New York		EmblemHealth	
<FormattedMemberName> NYC Medicare Advantage Plus			
Member ID:			
Group:	NY037GRS	Office Visit Copay:	\$0
Issuer ID (80840):	9101000302	Specialist Visit Copay:	\$15
Part B RxBIN:	020115	Emergency Room Copay:	\$50
Part B RxPCN:	NS	Preventive Copay:	\$0
Part B RxGroup:	WM3A		
RxID:		CMS H4036-816	

Identification Card
(December)



Welcome Guide
(December)

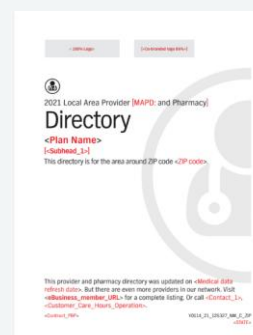


Member Newsletters
(January)

Available online or by request



Evidence of Coverage



Directory

Enrolling

How to enroll in your new plan:

How to enroll



Enrollment

As part of your plan, you have been automatically enrolled.

How to opt out



Opting out

Need to opt out?
5 ways to opt out

Complete electronically at:

www.empireblue.com/nyc-ma-plus

Mail to: NYC Medicare Advantage Plus Plan,
PO Box 173605, Denver, CO 80217

Fax to: 877-494-7195

Phone: 833-325-1190

Email to: NYCMAOPTOUT@empireblue.com

Note: Transfer period is September 15th to October 31st. By opting out of the NYC Medicare Advantage Plus Plan, you will be responsible for the full premium difference between the NYC Medicare Advantage Plus Plan and your plan's cost. To opt to remain enrolled in Senior Care, complete the electronic opt-out form at www.empireblue.com/nyc-ma-plus and select the option to remain on Senior Care or complete the opt-out form provided in your NYC Medicare Advantage Plus Enrollment Guide.

Important Dates and Resources

NYC Medicare Advantage Plus Plan is Effective January 1, 2022

General Retiree Education meetings are taking place from September through October 2021.

The opt out period runs through September 15 - October 31 for Senior Care;
October 1 - 31 for all other plans

Websites have the most up-to-date information:

has updated member communications, important plan information,
and will be available throughout the life of the plan to support you in answering questions

The City will continue to post updated documents such FAQ's, plan comparison, rate charts, ERB form,
etc on the OLR at

New York City Medicare Advantage Plus Welcome Call Center **833-325-1190**

Thank you!



The Whole Health Company



The City Medicare Advantage Plus plan is offered through an alliance between Empire BlueCross BlueShield Retiree Solutions and EmblemHealth.

Empire BlueCross BlueShield Retiree Solutions is an LPPO plan with a Medicare contract. Enrollment in Empire BlueCross BlueShield Retiree Solutions depends on contract renewal. Empire BlueCross BlueShield Retiree Solutions is the trade name of Anthem Insurance Companies, Inc. Independent licensee of the Blue Cross Blue Shield Association.

EmblemHealth insurance plans are underwritten by EmblemHealth Plan, Inc., EmblemHealth Insurance Company, and Health Insurance Plan of Greater New York (HIP). EmblemHealth Services Company, LLC provides administrative services to EmblemHealth companies. The EmblemHealth companies are separate companies from Empire BlueCross BlueShield.

Empire and EmblemHealth have come together to create a new, customized, fully insured Group Medicare Advantage program for the City of New York.