

62 All Creatures of Our God and King

Unison



- | | |
|--|---------------------------------|
| 1. All crea-tures of our God and King, | lift up your voice and with us |
| 2. O broth-er wind, air, clouds, and rain, | by which all crea-tures ye sus- |
| 3. O sis-ter wa-ter, flow-ing clear, | make mu-sic for thy Lord to |
| 4. Dear moth-er earth, who day by day | un-fold-est bless-ings on our |
| 5. All ye who are of ten-der heart, | for-giv-ing oth-ers, take your |

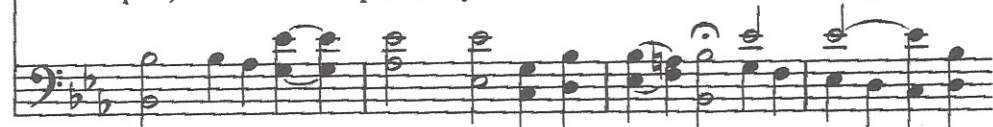


Harmony

Unison



sing,	O	praise	ye!	Al-le-lu-ia!	O	broth-er	sun	with
tain,	O	praise	ye!	Al-le-lu-ia!	Thou	ris-ing	morn,	in
hear,	Al-le-lu-ia!	Al-le-lu-ia!	O	broth-er	fire	who		
way,	Al-le-lu-ia!	Al-le-lu-ia!	The	flowers	and	fruits	that	
part,	O	praise	ye!	Al-le-lu-ia!	Ye	who	long	pain
					and			



Refrain (Harmony)



gold-en beam,	O	sis-ter	moon	with	sil-ver	gleam!	
praise re-joyce,	ye	lights	of eve-ning,	find	a	voice!	
lights the night,	pro-vid-ing	warmth,	en-hanc-ing	sight,	O	praise	ye!
in thee grow,	let	them	God's	glo-ry	al-so	show!	
sor-row bear,	praise	God	and	on	him	cast	your
	care!						



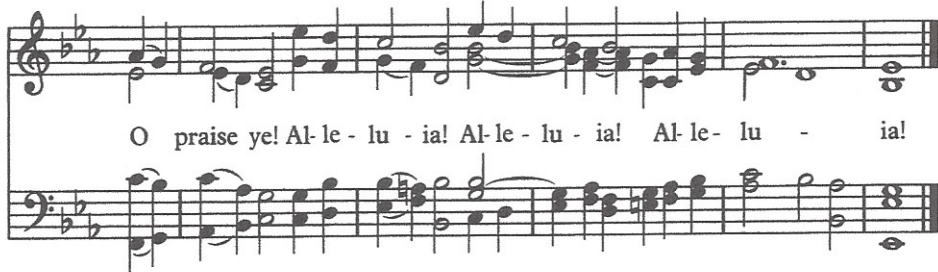
WORDS: Francis of Assisi, ca. 1225; trans. by William H. Draper, 1925, adapt. 1987

MUSIC: *Geistliche Kirchengesänge*, 1623; harm. by Ralph Vaughan Williams, 1906

Adapt. © 1989 The United Methodist Publishing House

LASST UNS ERFREUEN
88.44.88 with Refrain

Unison



6. And thou, our sister, gentle death,
waiting to hush our latest breath,
Alleluia! Alleluia!
Thou leadest home the child of God,
and Christ our Lord the way has trod,
Refrain

7. Let all things their Creator bless,
and worship him in humbleness,
O praise ye! Alleluia!
Praise, praise the Father, praise the Son,
and praise the Spirit, Three in One!
Refrain

1. "Are ye a - ble," said the Mas - ter, "to be
 2. Are ye a - ble to re - mem - ber, when a
 3. Are ye a - ble when the shad - ows close a -
 4. Are ye a - ble? Still the Mas - ter whis-pers

cru - ci - fied with me?" "Yea," the sturd - y dream - ers
 thief lifts up his eyes, that his par - doned soul is
 round you with the sod, to be - lieve that spir - it
 down e - ter - ni - ty, and he - ro - ic spir - its

an - swered, "to the death we fol - low thee."
 wor - thy of a place in par - a - dise?
 tri - umphs, to com - mend your soul to God?
 an - swer, now as then in Gal - i - lee.

Refrain

Lord, we are a - ble. Our spir - its are thine.

Re - mold them, make us, like thee, di - vine.

This block contains the first line of a musical score. It features a treble and bass staff in G major (one sharp) and 4/4 time. The melody in the treble staff begins with a half note G4, followed by quarter notes A4, B4, C5, D5, E5, F#5, and G5. The bass staff provides a harmonic accompaniment with chords. The lyrics are printed below the treble staff.

Thy guid - ing ra - diance a - bove us shall be

This block contains the second line of the musical score. The melody continues with a half note G5, followed by quarter notes F#5, E5, D5, C5, B4, and A4. The bass staff continues with harmonic support. The lyrics are printed below the treble staff.

a bea - con to God, to love, and loy - al - ty.

This block contains the third line of the musical score. The melody concludes with a half note G4, followed by quarter notes F#4, E4, D4, C4, B3, and A3. The bass staff concludes with harmonic support. The lyrics are printed below the treble staff.

Lift High the Cross

159

Refrain (Unison)

Lift high the cross, the love of Christ pro-claim

Fine

till all the world a-dore his sa-cred name.

Harmony

1. Come, Chris-tians, fol-low this tri-um-phiant sign. The
2. Each new-born ser-vant of the Cru-ci-fied bears
3. O Lord, once lift-ed on the glo-rious tree, as
4. So shall our song of tri-umph ev-er be: Praise

D.C.

hosts of God in u-ni-ty com-bine.
on the brow the seal of him who died.
thou hast prom-ised, draw the world to thee.
to the Cru-ci-fied for vic-to-ry!

WORDS: George William Kitchin and Michael Robert Newbolt, 1916, alt.
MUSIC: Sydney Hugo Nicholson, 1916

© 1974 Hope Publishing Co.

CRUCIFER
10 10 with Refrain