

CONKLIN AFFINITY® & Urethane Coating ACCLAIM® Systems & Products



*Flexible Armor Against
the Elements!*

Photo courtesy of Mahlon Lee

PUT YOUR TRUST IN ROOFING SYSTEMS THAT PERFORM

Back in 1977, Conklin Roofing Systems pioneered and formulated the first acrylic, elastomeric liquid roof coating, which offered superior protection against the elements and provided substantial energy efficiency. The future of commercial roof coatings in the twenty-first century is tied to high-performance acrylics and rugged, long-lasting urethanes. Conklin's acrylics and urethanes innovations in the commercial roofing industry are a hallmark of our growth and loyalty among professional contractors across the nation.

AFFINITY®



Affinity Base Coat and Affinity Top Coat applied over aged PVC single-ply membrane.



Affinity Base Coat applied over aged PVC single-ply membrane.

Affinity® Top Coat

Aliphatic Polyurethane Roof Coating

Affinity is a high-value, single-component polyurethane roof coating that offers the toughness, elasticity, and long-term performance expected from a Conklin Roofing Systems-inspired product. With a highly reflective, bright white finish, Affinity offers unsurpassed weather resistance, making it extremely durable and useful for almost any commercial roofing project. Affinity Top Coat is designed for use in conjunction with Affinity Primer (only with EPDM and TPO substrates) and Affinity Base Coat as a full system with a limited warranty up to 25 years* over metal, concrete, spray foam and approved membranes. Affinity Top Coat can be used as a stand-alone utility coating in repair and maintenance applications where prolonged moisture is problematic like built-in gutters, scuppers, drains, etc.

#58244 5 gallons

**Conklin Company Inc. offers limited warranties up to 25 years on the Affinity® urethane coating system upon submittal and approval of warranty application.*

Visit the Conklin Roofing Systems website at www.ConklinRoofingSystems.com for more detailed information or refer to the current Roofing Systems monthly pricing guide.

Affinity® Base Coat

Aromatic Polyurethane Roof Base Coating

Affinity Base Coat is a fire-resistant, single-component polyurethane roof base coating designed to use in conjunction with Affinity Primer (only with EPDM and TPO substrates) and Affinity Top Coat as a full system with a limited warranty up to 25 years* over metal, concrete, spray foam and approved membranes.

#58242 5 gallons

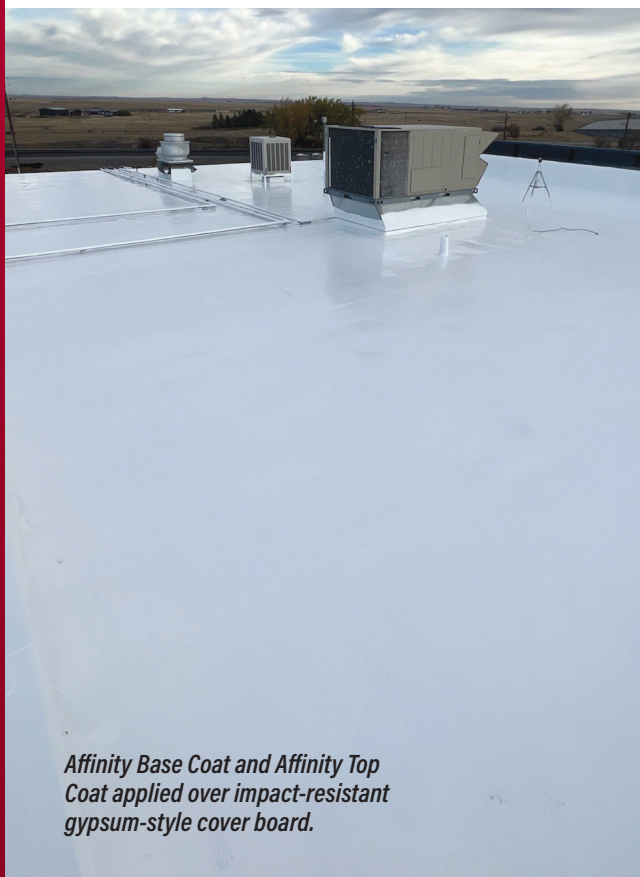
Affinity® Primer

Synthetic Rubber Primer

Affinity Primer is a synthetic rubber coating required for adhesion of Affinity Base Coat to EPDM and TPO. Not for use on PVC.

#58157 5 gallons

AFFINITY URETHANE COATING SYSTEMS AND PRODUCTS

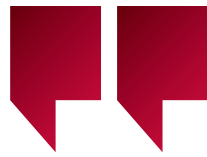


Affinity Base Coat and Affinity Top Coat applied over impact-resistant gypsum-style cover board.



Affinity Base Coat and Affinity Top Coat applied over aged PVC single-ply membrane.





Affinity® is the best system ever to hit the commercial roofing market, period, end of story. If you are in Florida, Maine, New York, or California, this system should always be the one that you consider because of its user-friendly nature in a wide range of weather conditions. The extreme durability and longevity of the Affinity® coating on the roof surface creates a winning system for both the building owner and the contractor. Without a doubt in my mind, I know that Conklin is leading the leaders in the commercial roofing industry with the Affinity® urethane coating system!

- MOSES TROYER, COLORADO



Affinity Top Coat applied as a utility coating to metal roof system dead valley area.

Affinity® Clear

Utility Waterproofing System

Affinity Clear polyurethane coating is designed for rejuvenating and waterproofing weathered skylights and vertical, above-grade masonry surfaces. This waterproofing coating is designed for fiberglass and plexiglass skylights as well as brick, stone, and concrete. Affinity Clear can also be used in conjunction with the Affinity Yellow Walkway Kit to create durable and long-lasting non-slip roof walkways.

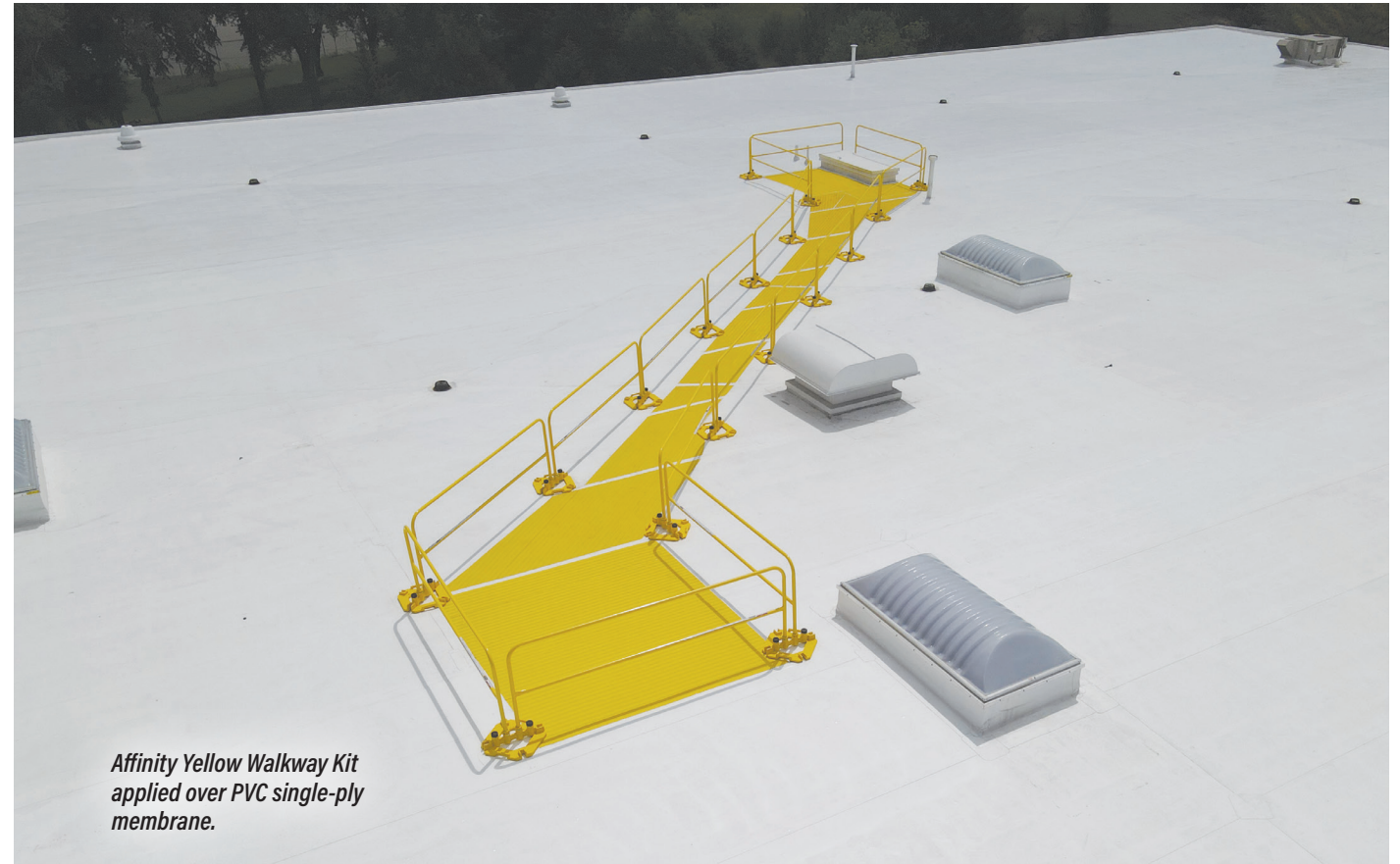
#58149 5 gallons

Affinity® Yellow Walkway Kit

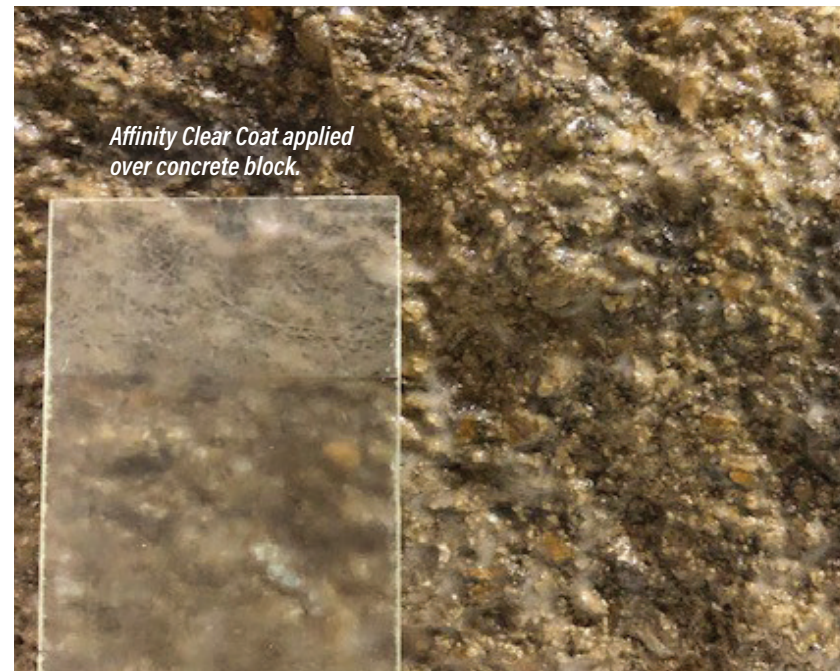
The Affinity Yellow Walkway Kit is designed to add high-visibility non-slip walkways over Affinity Top Coat. The kit consists of 50 lbs. of granules and a 1 quart colorant pack used with a 5 gallon pail of Affinity Clear coating to produce 500 square feet of non-slip walkways.

#58153 5 gallons

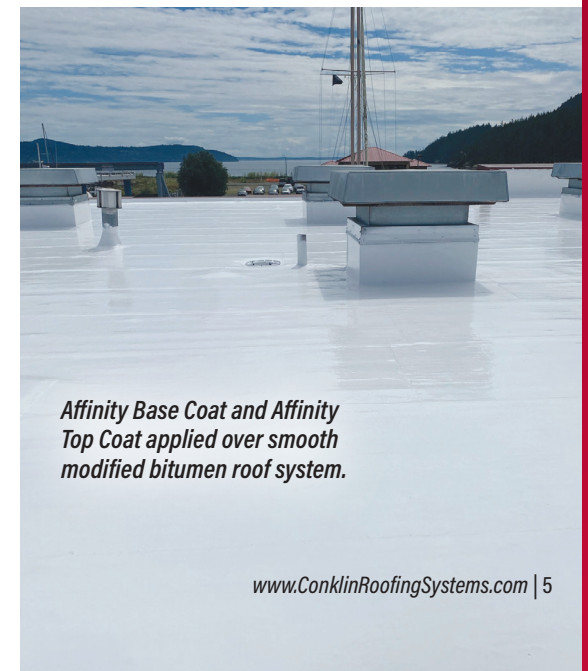
Visit the Conklin Roofing Systems website at www.ConklinRoofingSystems.com for more detailed information or refer to the current Roofing Systems monthly pricing guide.



Affinity Yellow Walkway Kit applied over PVC single-ply membrane.



Affinity Clear Coat applied over concrete block.



Affinity Base Coat and Affinity Top Coat applied over smooth modified bitumen roof system.



Acclaim® Pond B Gone® self-levels and provides the smoothest build-up there is in low spots on roofs. I'm really impressed with the product, how simple it is to use, and how fast it cures. Within two hours it can be coated and it solves problems. Pond B Gone, to me, is a miracle!

- SIMON LEE, PENNSYLVANIA



ACCLAIM®

Acclaim® FSG

Two-Part Urethane Flashing and Seam Grade Sealant
Acclaim FSG is a two-part urethane sealant for flashing and seams. Acclaim FSG can be used prior to the applications of Conklin's acrylic or urethane coating products for use over metal, BUR, modified bitumen membranes, PVC membranes, SPF, ISO board, wood, glass mat faced gypsum panels, and concrete.

#58244 4 gallon kit



Acclaim® FSG applied by chip brush over fastener head on an R-panel metal roof system prior to coatings application.



Acclaim® FSG applied by chip brush over fastener head, plate and seam on an impact resistant cover board system prior to coatings application.



Acclaim® FSG applied by chip brush over seam on a concrete roof system prior to coatings application.



Visit the Conklin Roofing Systems website at www.ConklinRoofingSystems.com for more detailed information or refer to the current Roofing Systems monthly pricing guide.

ACCLAIM URETHANE COATING SYSTEMS AND PRODUCTS

Acclaim® Pond B Gone®

Two-Part Self-Leveling Urethane Slope Corrector

Acclaim Pond B Gone is a two-part self-leveling urethane slope corrector designed to address low-lying roof areas. Pond B Gone can be used prior to the application of Conklin's acrylic or urethane coating products for use over metal, BUR, modified bitumen membranes, SPF, ISO board, and concrete.

#58100 2 gallon kit



Acclaim Pond B Gone applied in a low scupper area over an aged acrylic roof coating prior to application acrylic recoating system.



Acclaim Pond B Gone applied in a low area over a new spray polyurethane foam roof system prior to application of coatings system.

Conklin Roofing Systems ▪ www.ConklinRoofingSystems.com ▪ 952-496-4215

Affinity Base Coat and Affinity Top Coat applied over a smooth modified bitumen roof system.



A Charles W. Herbster Company

