



WATER CARTON LIFE

OUR VALUES



Renewable raw materials

Our production is less environmentally impactful by using carton board as the main raw material from responsibly managed forests and bioplastics of plant origin, **we guarantee a lower environmental impact in our production.**



CO2 Reduction

The impact of carbon footprint on the entire product life cycle is reduced by sustainable packaging production compared to other materials like plastic, glass, or metal.



LY Company Foundation

It is a non-profit organization that was born with the aim of helping **to generate development opportunities in the most disadvantaged places of the planet** and to contribute to the care of the environment.



IFS

We meet the requirements of distributors on food and beverage quality and safety. We have the guarantee of **IFS certification that guarantees the traceability of our product.**



ODS

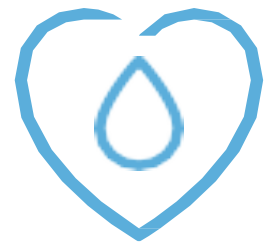
We join the Sustainable Development Goals adopted by the United Nations in the 2030 Agenda, with the aim of **promoting sustainability and promoting training** as a means of dissemination and awareness.



OUR OBJECTIVES



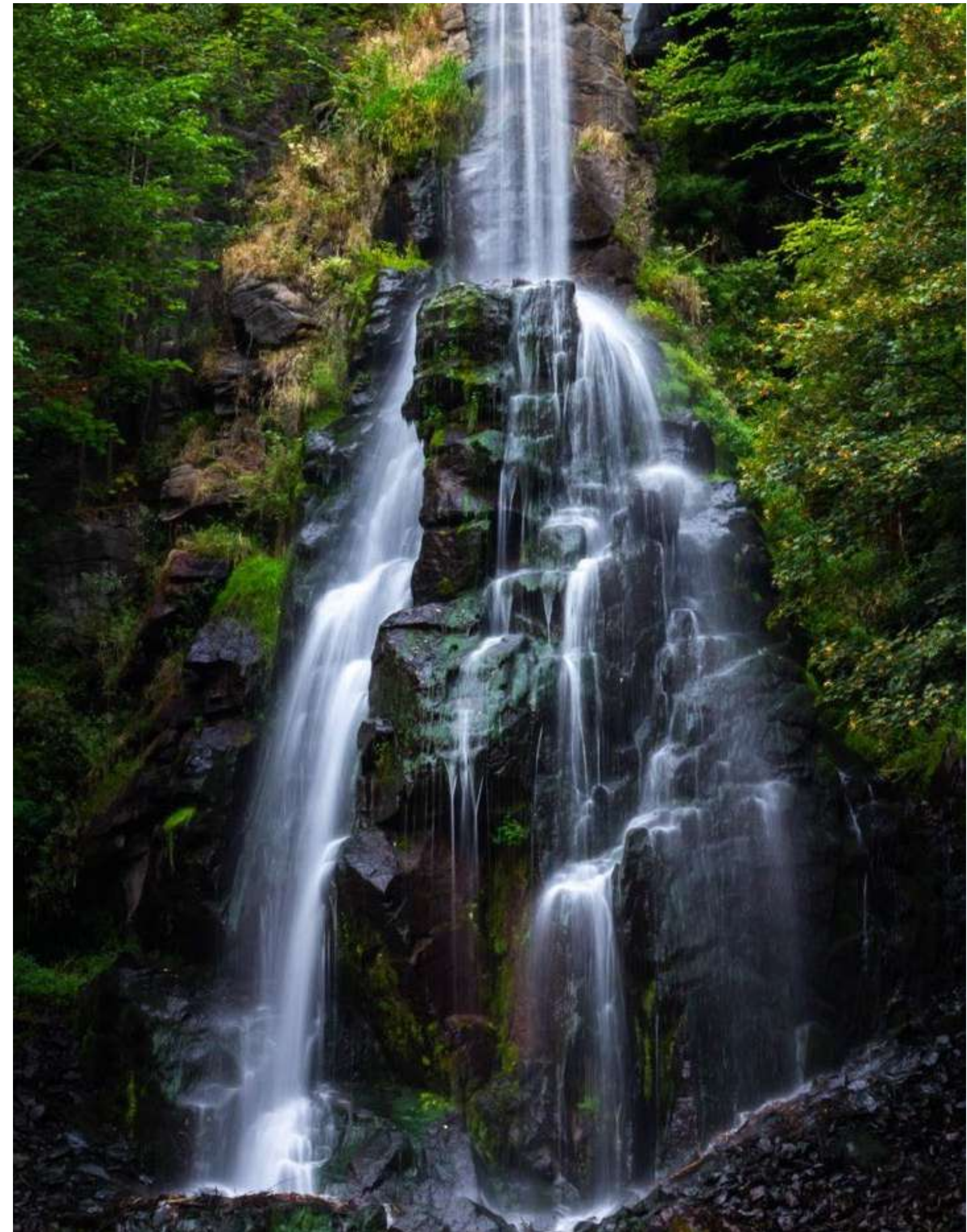
Protecting our environment with the most sustainable packaging on the market, replacing fossil fuels with sources of plant origin.



Taking care of the health of our customers with a premium water with a very weak mineralization, low sodium content and free of micro plastics.



Take care of the global community through our Foundation Ly Company Agua y Vida, and in collaboration with Pozos Sin Fronteros and other NGOs, carrying out humanitarian projects and providing water to more than 7 developing countries.



ENVIRONMENT

Choosing the **right packaging** for our water is paramount. The **safety** of the product and its **impact on the natural ecosystem** at the end of its life depends on this. **We believe that the supply of natural resources must be managed responsibly**, so our board is **certified** according to the parameters **FSC**, certified by **Carbon Trust** and **Bonsucro**.

Why not choose a **plastic** bottle?

- Is a limited resource;
- Impact on climate change;
- Only 9 % is recycled*;
- 32 % of all packaging plastic is not collected and takes hundreds of years to degrade;
- It is of fossil origin.

The choice of fossil materials causes

- Greenhouse gas emissions;
- Depletion of limited resources;
- Waste discharged into the environment;
- Limited recycling;
- In 2023, Earth Overshoot Day took place on August 2



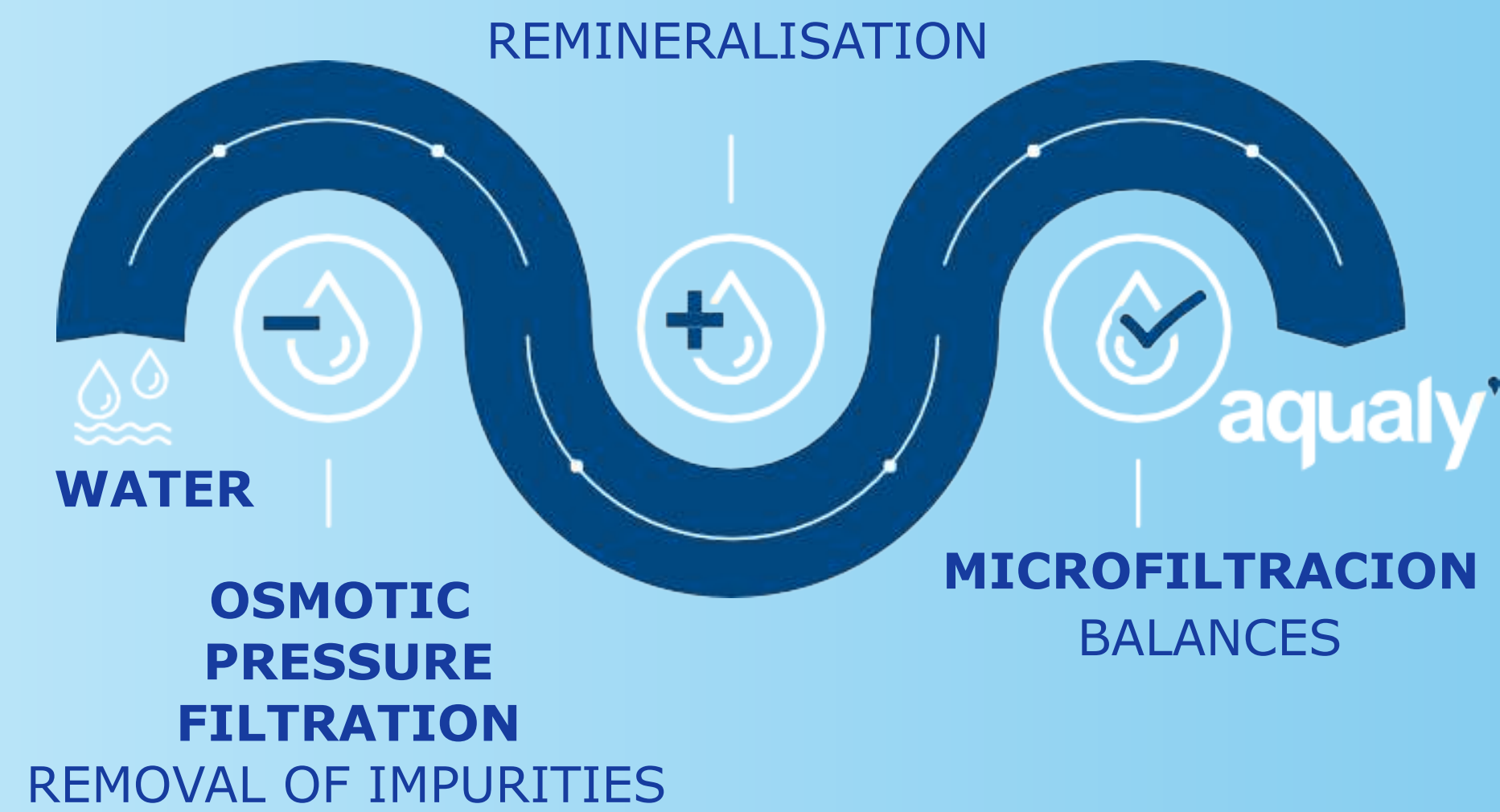
OUR WATER

On the way to the container, our still water goes through an innovative three-step system:

OSMOSIS > REMINERALISATION > MICROFILTRATION

The result is a high quality pollution-free product designed for the well-being of the person.

It is our response to the growing demand for healthy, controlled products of transparent origin.



Low mineralisation



0% of impurities



balanced pH



Premium water with essential minerals



Suitable for consumption in all ages



Suitable for a low sodium diet



OUR PACKAGING

The higher the percentage of renewable materials in a packaging, the lower the impact on the climate.
An important factor in the transition to a low-carbon circular economy (source Tetra Pak).



PAPER

Cardboard is the primary element of our containers.



HDPE 2 - 76% PLANT BASED SOURCE

A small percentage of plastic is used to prevent moisture from entering the packaging and thus to keep the contents safe. This material comes mainly from polymers of plant origin certified Bonsucro.



ALUMINUM

Aluminum is used to prevent oxidation and damage caused by light and is present with an even thinner layer of a hair.

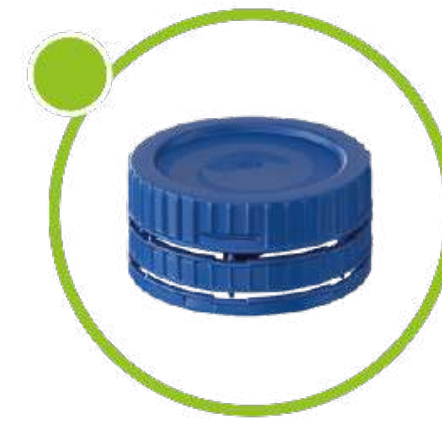
20.000 PACKAGES SAVE*

KG of PLASTIC

106 Kg

KG of CO2

296 Kg



OUR **BAG IN BOX**®



**LOW IMPACT ON
CLIMATE CHANGE.**



**REDUCTION OF PRODUCTION
AND TRANSPORT CONSUMPTION.**



**THE PACKAGING IS
FULLY RECYCLABLE.**



**UP TO 60% PLASTIC
REDUCTION.**



**EASY TO USE WITH THE
VITOP TAP**



**REDUCTION IN THE VOLUME
OF HOUSEHOLD WASTE.**



OUR SIZES



250 ML

- 24 Pcs / Box
- 2688 Pcs / Pallet
- 672 Liters
- 112 Box / Pallet
- 757 kg Weight / Pallet
- 88,704 Pcs / Truck



330 ML

- 24 Pcs / Box
- 1920 Unid / Pallet
- 634 Liters
- 80 Box / Pallets
- 705 kg Weight / Pallet
- 48.000 Pieces / 40'
- 63.360 Pcs / Truck



500 ML

- 24 Pcs / Box
- 1344 Pcs / Pallet
- 672 Liters
- 56 Box / Pallet
- 760 kg Weight / Pallet



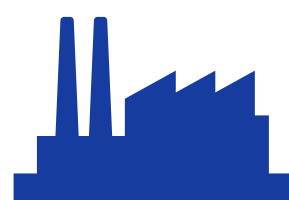
1 L

- 8 Pcs / Box
- 760 Pcs / Pallet
- 760 Liters
- 95 Box / Pallets
- 825 Kg Weight / Pallet
- 19.000 Pieces / 40'
- 21.280 Pcs / Truck

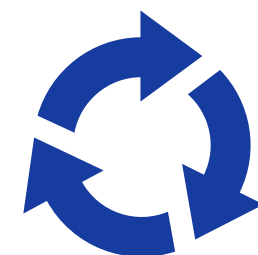


8 L

- 1 pcs / box
- 96 Pcs / Pallet
- 768 Liters
- 810 kg Weight / Pallet
- 3168 Pcs / Truck



REDUCTION OF WATER AND ENERGY CONSUMPTION DURING PRODUCTION.



PACKAGING IS FULLY RECYCLABLE



REDUCTION OF TRANSPORT CONSUMPTION.



LOW IMPACT ON CLIMATE CHANGE.



Tetra Pak was present at COP27 with its packaging!

In particular, the 500ml size was distributed and used as the event water.

"A completely new and transformative approach must be adopted [to food systems]. This can be facilitated by a newly designed framework for coordinated systemic action".

Johan Rockstrom, Director
The Potsdam Institute for Climate Impact Research
Member, Advisory Group on Sustainability, Tetra Pak



WHY THE CARDBOARD

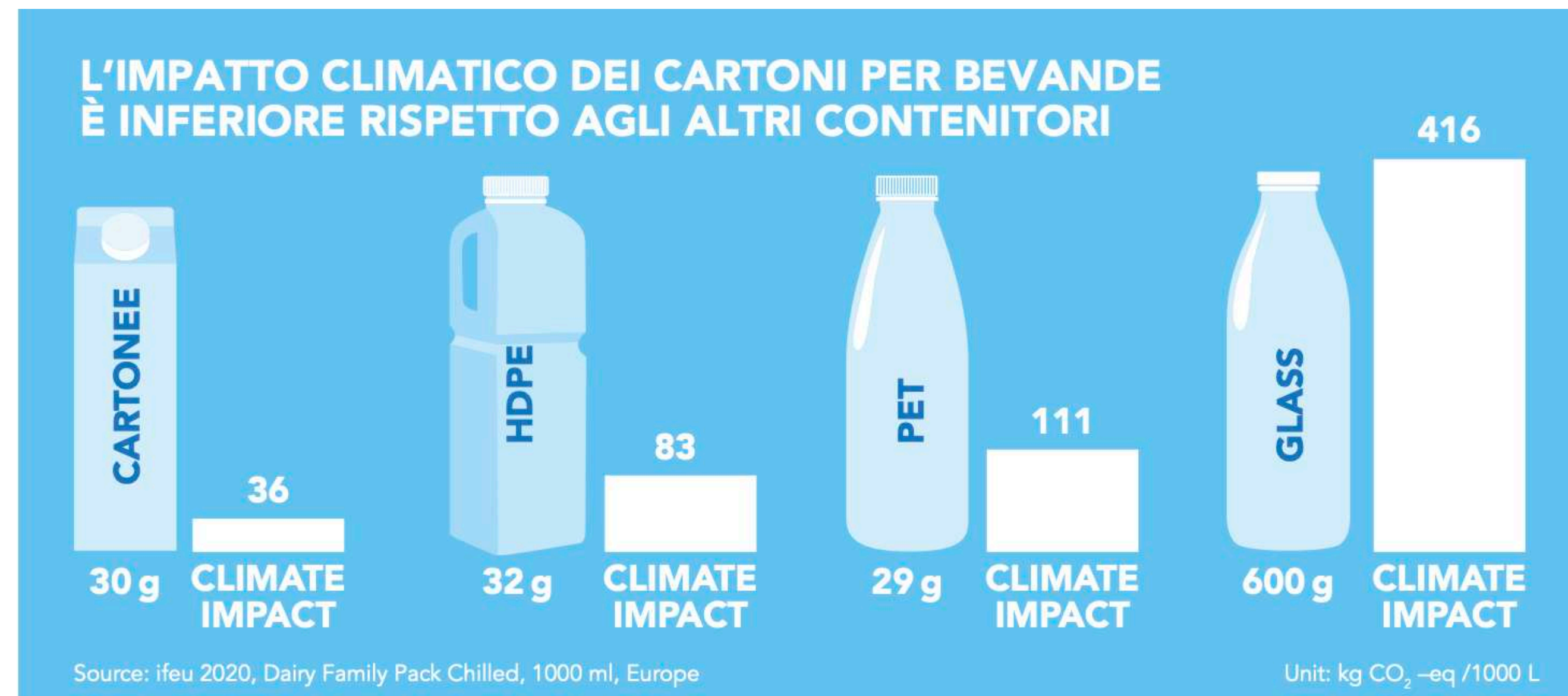
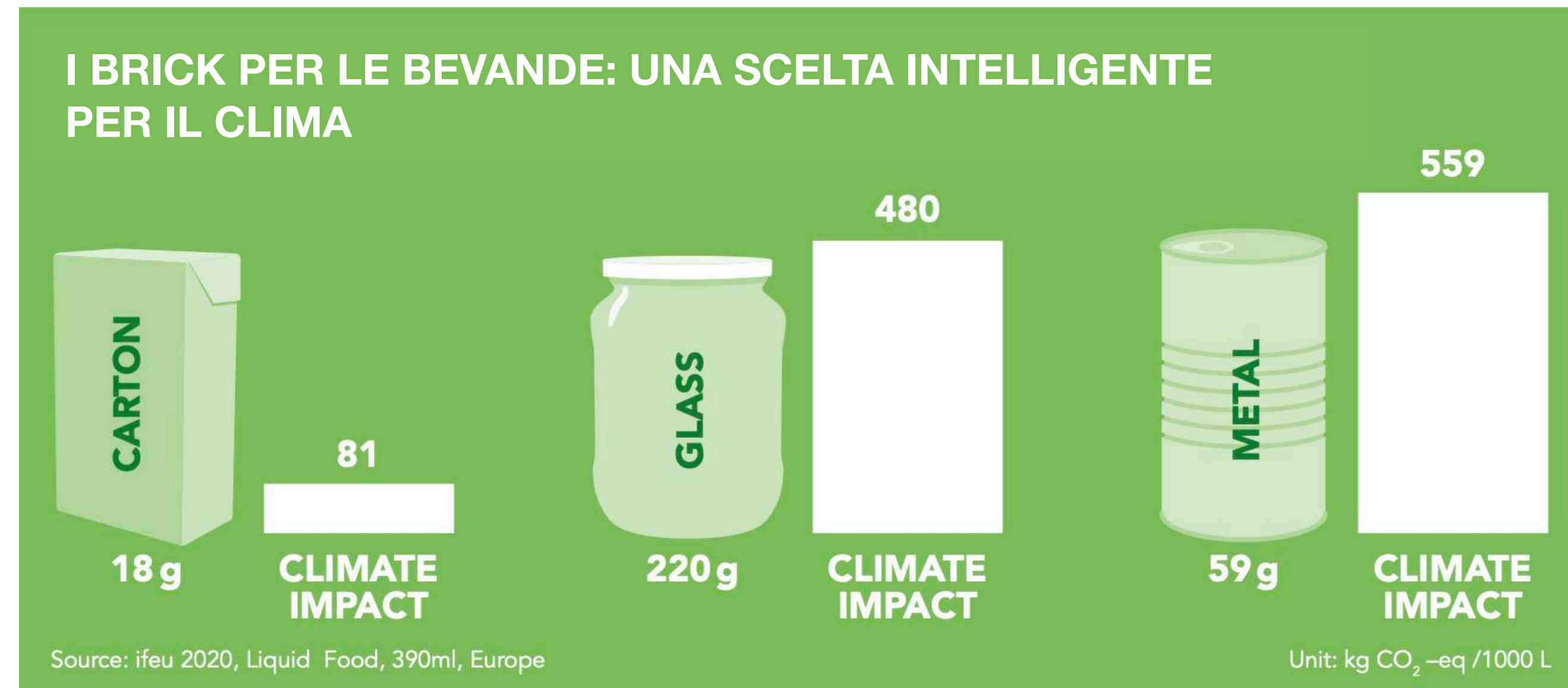
The **cardboard** used for our bricks has a **lower climate impact** when compared to the stages of production transport and recycling of other materials such as plastic, aluminum and glass.

For our bricks we use **wood fibers** and **plastic vegetable cane sugar** that are **renewable** materials.

The results of **ifeu LCA 2020** show that, the higher the share of renewable materials in a package, the lower the impact on the climate; **they absorb CO2 in the atmosphere**, while fossil materials release new CO2, which has been stored in the ground for millions of years.

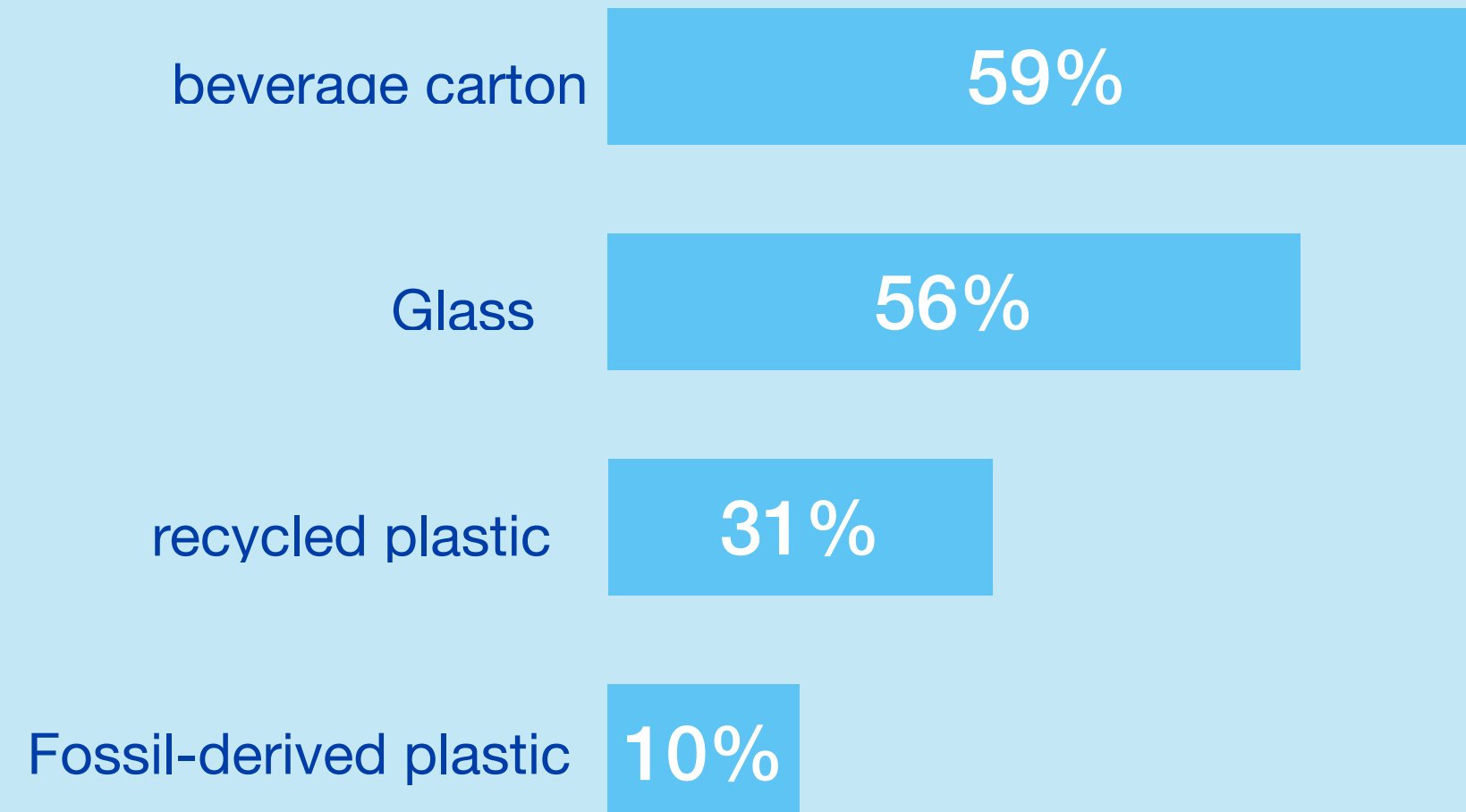
Materials that are made of finished raw materials such as metal, oil or sand are **not renewable** fossil materials. Glass made from sand or plastic made from fossil raw materials such as oil and natural gas is also non-renewable.

Therefore, from a climate point of view, beverage **cartons are a good solution compared to alternative fossil materials.**

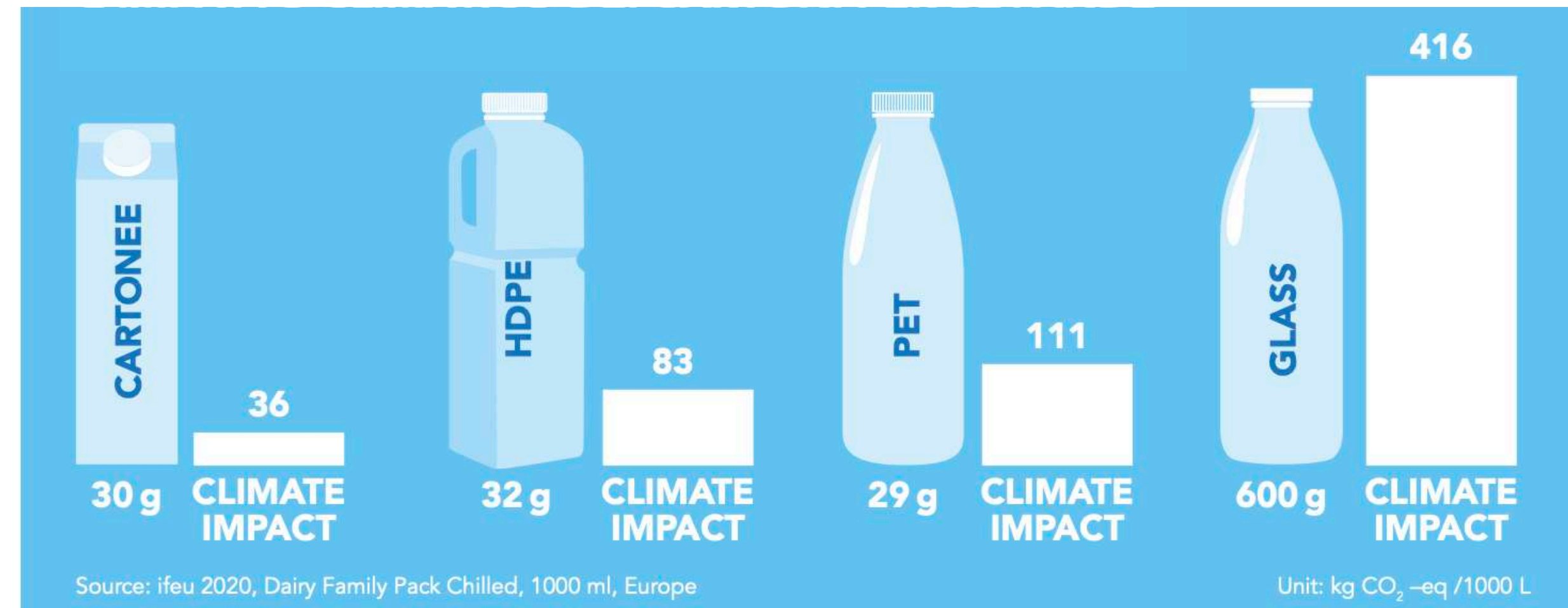


OUR SUSTAINABLE SUPPLY CHAIN

TOP MATERIALS more sustainable/ less environmental impact according to Italian consumers



Source: Osservatorio packaging del largo Consumo. Consumer Survey Gennaio 2023. target shopper 18-65anni



*Concerning trucks that have a capacity of up to 23 tons.

Cardboard bricks are lighter and allow better weight optimization on transports. This results in greater fuel savings and therefore lower environmental impact.

aqualy'

Aqualy in RETAIL

Milano - Italy



Malaga - Spain



New York - USA



Aqualy Bag in Box® in GDO

UNICOOP & CONAD Toscana

The first supermarket chains in Italy to include Aqualy Box, our bag-in-box. designed for home use.



CUSTOMISE THE PACKAGING



Show your **involvement** in **corporate social responsibility**



Retain your customers and employees with **eco-friendly** water by **customizing with your brand** and build a **sustainable reputation**.



Use packaging as a **marketing tool**.



Collaborate with **Ly Company Foundation** to support beneficial projects around the world.

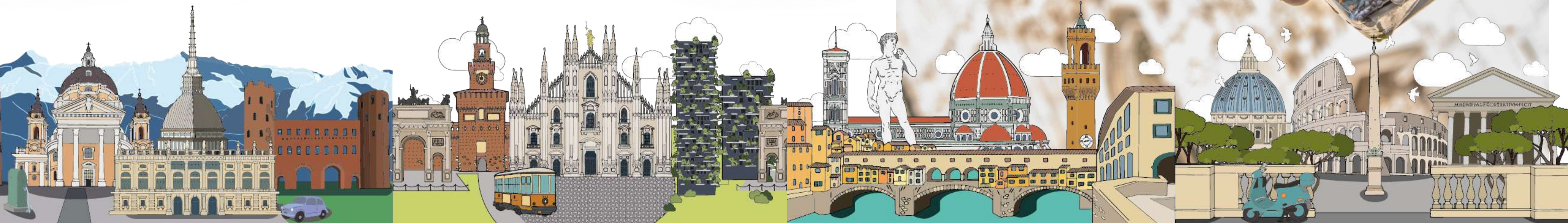


Actively contribute to the **Sustainable Development Goals of the 2030 UN Agenda**. Become an ambassador.



CITY IN BRICK

City in Brick is the project of **Aqualy** born from the desire to **celebrate beauty** as a reflection of the **culture** of a country.



Fundación **Ly Company**

For each package, we assign a contribution to the Ly Company Foundation that carry out multiple project in a disadvantage area of the world with the help of other NGO like Pozos Sin Fronteras, which builds artesian wells in places in the world where there is no drinking water.

Thanks to water, it is possible to build sustainable societies, with school and environmental education and agricultural training as pillars of development.

Those who decides to take the path of the water packaged in carton with Aqualy contribute to all this.



aqualy.com



aqualy'

