

Regatta Site – Lake Barrington Shores Marina

The address is: **24400 IL 59, Lake Barrington, IL 60010**

Click this button for a map to the regatta site

The main entrance into **Lake Barrington Shores** is on Barrington Road (Illinois Route 59).

This is 6 miles north of Barrington, or 3 miles north of IL Route 22, or 1/4 mile north of Miller Road.
This is 3 miles south of IL Route 176 in Wauconda.

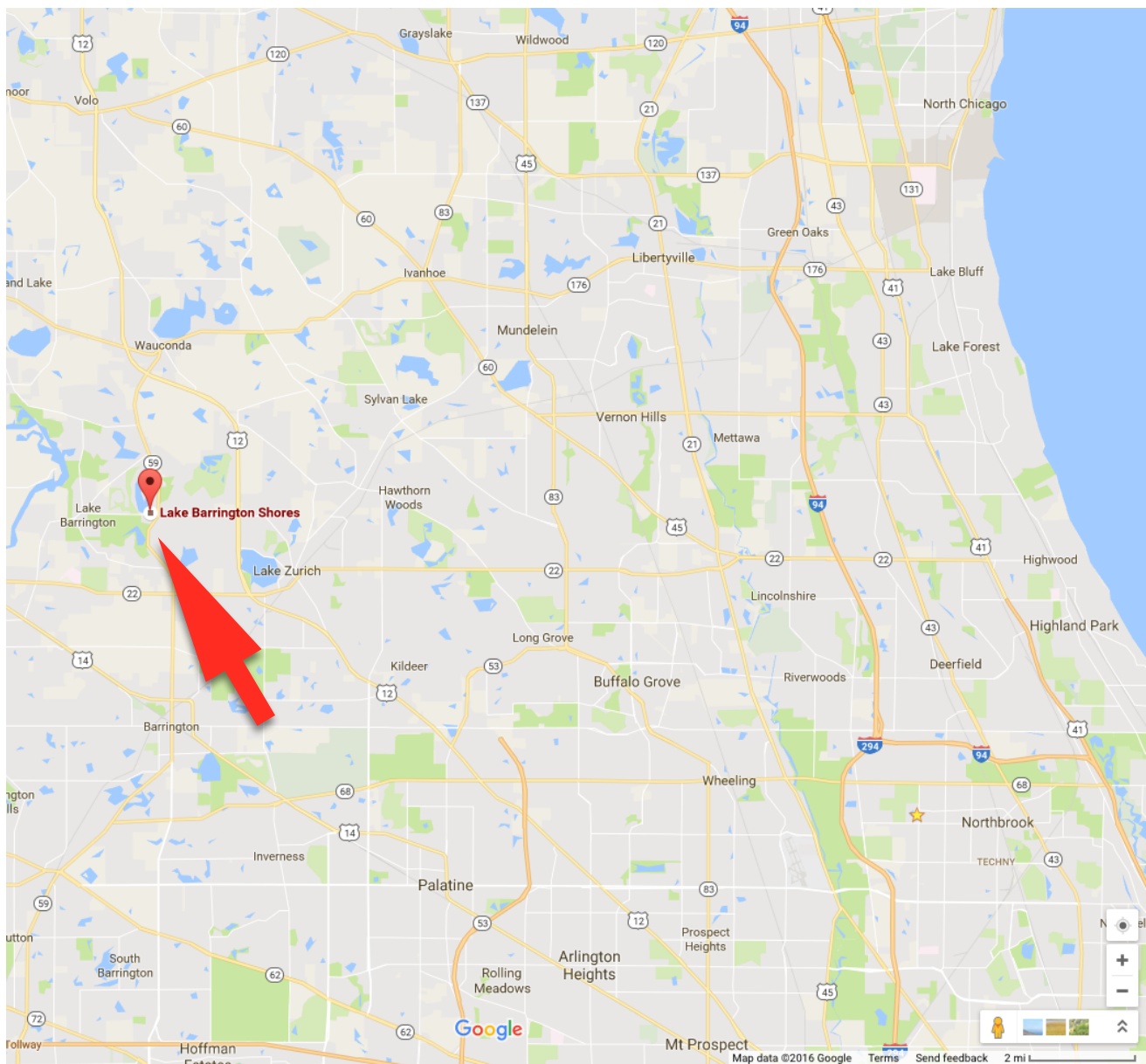
Do not try to use the entrance gate on Miller Road, even if your GPS thinks you can.

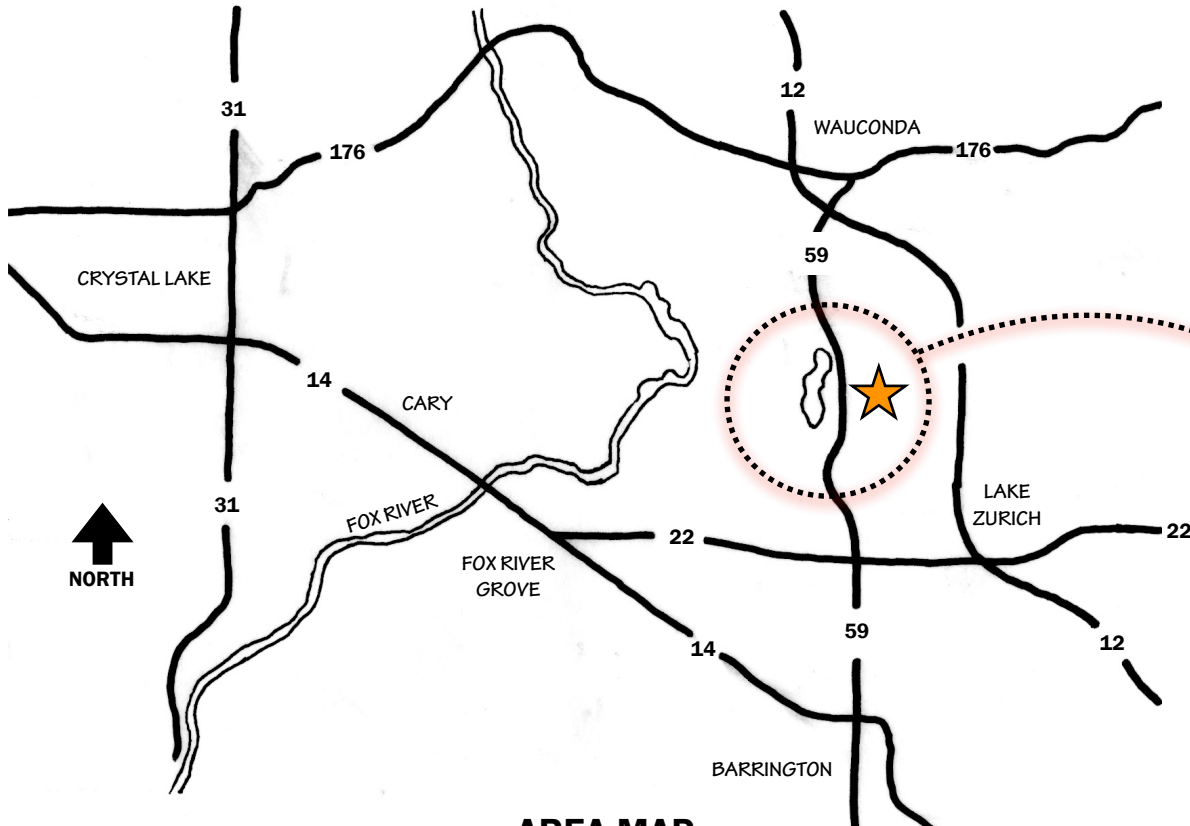
Get a parking pass at the entrance gate — give your name to the person at the gate and tell him you are going to the Marina to meet with Bob Armbruster, 847-835-2112.

After going through the gate, **turn left onto Old Barn Road** and continue for 1/2 mile.

You will see the small Marina sign on your right. **Park in the marina parking lot** on your right.

If you can see the lake on your right, you have passed the entrance to the marina parking lot.





AREA MAP

**Directions to the Lodge and the Marina
at Lake Barrington Shores**

The entrance into **Lake Barrington Shores** is at **24400 IL 59, Lake Barrington, IL 60010**.

This is 6 miles north of Barrington, or 3 miles north of IL Route 22, or 1/4 mile north of Miller Road.
This is 3 miles south of IL Route 176 in Wauconda.

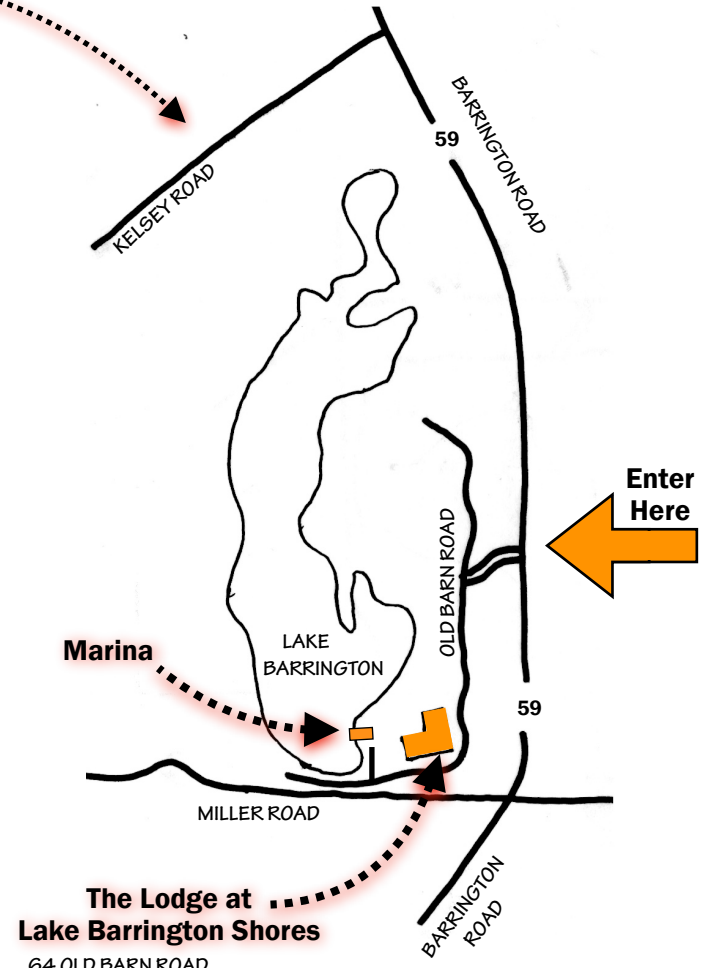
Do not try to use the entrance gate on Miller Road or Kelsey Road, even if your GPS takes you there.

Get a parking pass at the entrance gate — give your name to the person at the gate and tell him you are going to the Lodge (or the Marina) to meet with Bob Armbruster, 847-835-2112.

After going through the gate, **turn left onto Old Barn Road** and continue for 1/4 mile.

You will see the **Lodge building** on your right. If you are going to the Lodge, **Park in the second parking lot** on your left. Go inside the Lodge through the doorway at the drive-thru overhead roof.

To get to the **Marina**, drive past the Lodge building. Turn right into the **Marina Parking lot**. If you see the lake on your right, you have passed the entrance to the marina.



**The Lodge at
Lake Barrington Shores**
64 OLD BARN ROAD

STREET MAP