



POR⁴TENG

PORTENG ENGINEERING SERVICES SDN BHD

Contents

About Us.....	3
Company Information	4
Our Services.....	5
Our Core Products	14
Our Business Partner	19
Our Clients	19
Our Company Structure	20
Our Office	21

About Us

Porteng Engineering Services Sdn Bhd was established in 2021. It was founded by a team of ex-crane OEM staff and ex-terminal staff coming from different famous ports in Malaysia, Singapore, China and Hong Kong. We have a professional engineering team combined hands-on experience of over 100 years in crane engineering.

Technical functions of our team include specialists for all relevant disciplines, e.g. mechanical, structural and electrical engineering.

Over the past years, our team members have successfully delivered professional services to more than 150 STS cranes and more than 500 RTGs in the ports in Malaysia, China, Philippines, Indonesia, Thailand and Singapore.

Our vision is to setup a local professional crane service platform for the container terminals in Malaysia and Southeast Asia countries.

“The source for all your container terminal needs”

Company Information

General Information

Address:	Suite 05-17, Level 5, Indah Walk 3, (Wisma SP Setia) Jalan Indah 15, Taman Bukit Indah, 79100 Iskandar Puteri, Johor, Malaysia
Tel:	(Office) +60 7217 1559 (Mobile) +60 13 906 6168
Email:	cs@portenges.com
Company Registration No.:	202101000645 (1400943-M)
Website:	www.portenges.com

Business

Porteng provides port crane and equipment engineering services and supplies spare parts of the crane. Our Services include:

- Port engineering project design, planning and management
- Maintenance and repair of port equipment
- Crane failure troubleshooting
- Crane structure inspection and repair
- Technical consultancy
- Crane spare part supply

Our Merits

- Our collective experience in the crane industry from the worldwide ports let us create our own methodology not only to meet different client requirements, but also keep our work in high quality and under budget
- Suitable and correct approaches to ensure safety with zero accident
- Professional quality of services provided by a highly motivated team
- Strong technical background
- Teamwork based on the long-term co-operation among the staff
- 24/7 availability to meet the demand for the port operation
- With the support of crane OEMs and suppliers, we are able to help our clients to settle the difficulties facing when the warranty period of the crane is over

Our Services

Port engineering project design, planning & management

The Porteng's project manager serves as the central coordinator and planner of the port engineering project by providing one station services including scheduling, manpower and tools estimation and arrangement, materials ordering, cost estimation and monitoring, work procedure creation and reporting. This system assures the highest standards of efficiency throughout the project management process from the beginning stage to the final handover.

The project management function is critical to meeting the time, quality and cost parameters of any Project, and it is crucial that appropriate actions are identified and undertaken to guarantee on-time, on-budget performance. On the other hand, our project engineer designs the project implement method.

Port engineering project:

- RCMS and LCMS Integration
- Crane drive system and PLC upgrade
- Crane protective devices system design, installation, upgrade and modification
- Refurbishment of QC, RTG, reach stacker and ECH
- Crane relocation
- E-RTG conversion



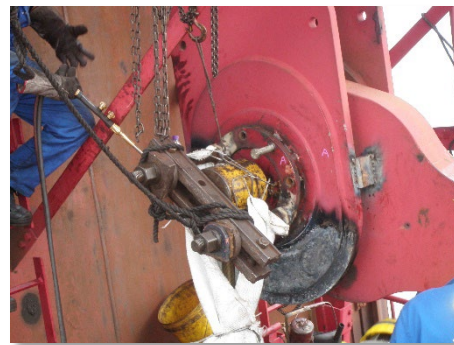
Maintenance and repair of port equipment

Our M&R services are available at varying levels and scopes, ranging from staffing to complete outsourcing of preventive maintenance and corrective maintenance of crane, and from off-site repair of individual crane components to complete on-site crane emergency repair.

Porteng employs highly-skilled and experienced maintenance engineers, supervisors and specialists in all relevant areas of expertise, including automation, electrical, hydraulic, mechanical, and registered electricians, welders, machinists, mechanics, fitters, and riggers. All technical staff are fully certified.

M&R services and experience:

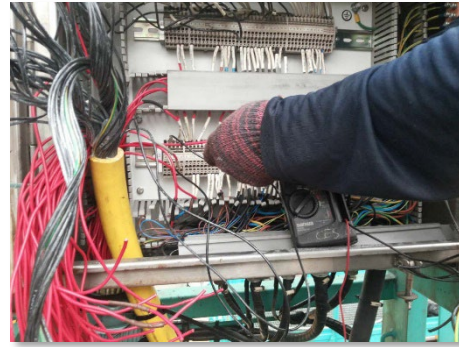
➤ QC Forestay Pin Replacement



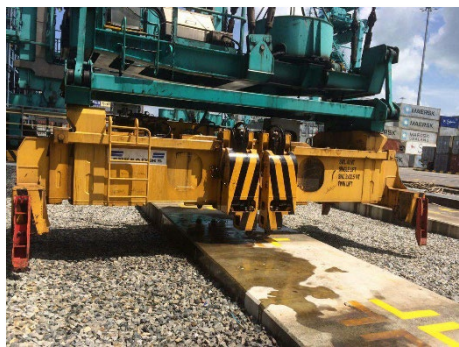
➤ Hoist / Trolley / Gantry Motor and Gearbox Replacement and Alignment of QC / RTG



➤ QC Spreader Cable Reel System Repair / Cable Replacement



➤ QC / RTG Spreader Repair / Maintenance



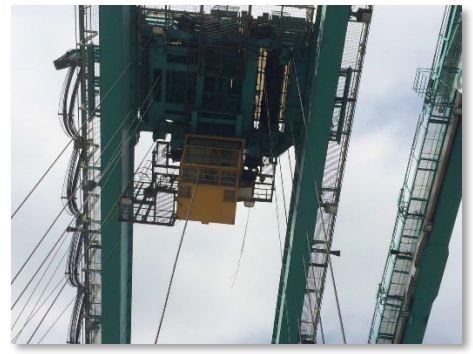
➤ RTG / Prime Mover Engine / Alternator Replacement



➤ QC / RTG Trolley Wheel / Bearing Replacement



➤ QC / RTG Wire Rope Change



➤ Wire Rope Sheave Bracket Modification



Crane failure troubleshooting

Porteng's troubleshooting teams are familiar with all types of motor drive and control system, electrical system and hydraulic system of port equipment. Troubleshooting ability with wide varieties of system is the key strength of our troubleshooting team.

The team members used to work in the breakdown team of some busy ports. They were also trained by the OEM of crane. Their experience and knowledge can therefore qualify to find out the breakdown crane problems and solve them in the fastest and the most accurate way.

Familiarized Control system and PLC

- Siemens
- Fuji
- Yaskawa
- GE



Crane structural inspection and repair

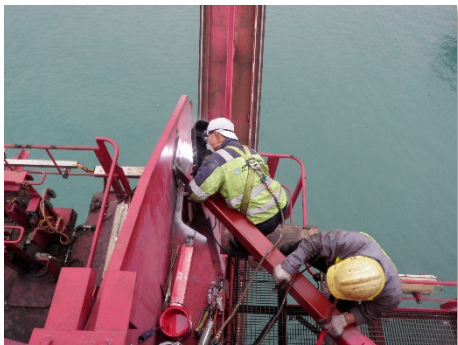
To protect your crane investment, it is essential to perform regular inspections. Regular crane examinations will in the long term save downtime and money. It makes economic sense, but more importantly it will save lives.

Porteng provides crane structural inspection of your cranes with the goal of assuring safety, while maintaining the quality of the equipment during operation. Porteng also provides structural repair service with universal repair standard for cranes.

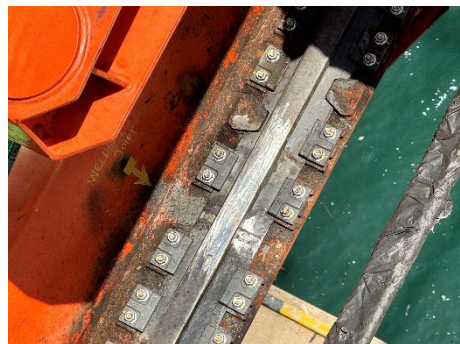
Porteng's crane structural inspection and repair are performed by experienced crane engineers and technicians.

Cover areas and experience:

- QC A-frame pylon plate structural reinforcement and modification



- QC Trolley short rail replacement and repair



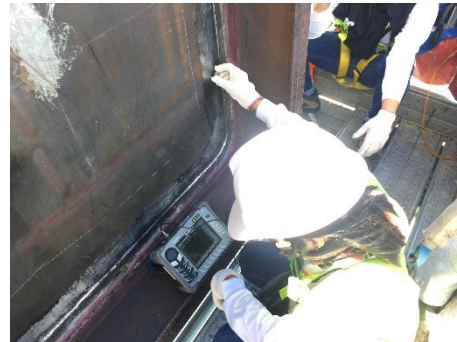
➤ QC catenary trolley structure fabrication and modification



➤ ECH crack structural repair



➤ Structural crack detection test: MT / UT



Technical consultancy

With our combined hands-on experience of 100 years in the crane engineering industry, our team are the specialists who are able to support and advise the clients with our knowledge and experience.

We are open to sharing our knowledge and experience in order to increase the technical standard of the local workforce. Porteng offers on-site crane training for customer personnel in the safe use and maintenance of cranes and all related equipment. We provide tailored training solutions and refresher crane training for those engineering team leaders and maintenance personnel in order to improve productivity and reduce workplace risk. We also provide technical proposal for crane performance improvement.

Consulting and training services:

- Crane maintenance and repair procedure advice
- Troubleshooting advice
- System upgrade / modification advice
- Technical proposal
- M&R Training



Our Core Products

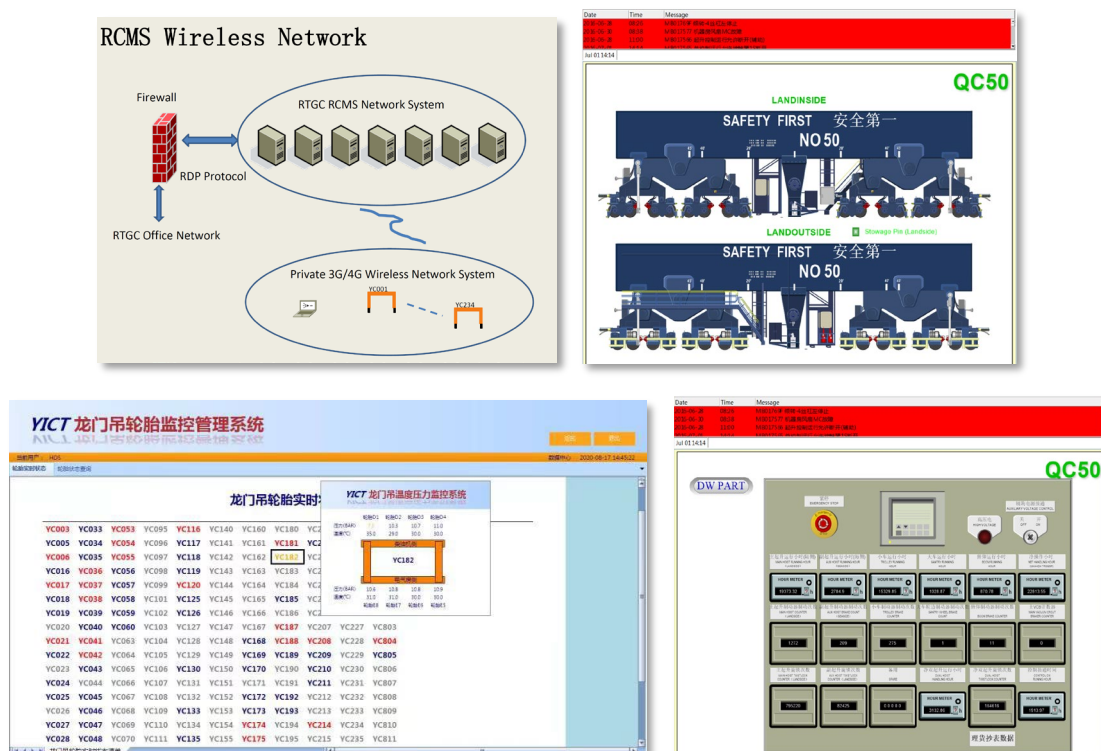
DP Remote Crane Management System (DP RCMS)



Automation in the crane industry has become more and more important nowadays. RCMS, as an important communication channel of crane automation between the remote operator and the crane system, is the most important system for managing the live operation status of the crane. Through wireless remotely access to the crane system, time and manpower saving can therefore be able to achieve. Client can also access anytime and anywhere by using the RMCS system.

The DP RCMS is jointly developed by Porteng and Qianhai Dawson Automation Technology (Shenzhen) Co. Ltd., in China. It is a specific system different from other brands of RCMS. It can provide multi-function for not only the engineering department, but also for the operation and safety department.

Special functions like remote recording the operation meter, oil level and tyre pressure of RTG could also be integrated according to the client needs.



Leewell Intelligent Status Monitoring System



Porteng collaborates with Leewell Intelligence (Shenzhen) Co. Ltd to bring its crane mechanism status monitoring products to Malaysia. Crane intelligent has been a trend in the container terminal industry, especially in ASEAN countries. Leewell, as one of the famous intelligent system developers from China, supplies both software and hardware for automatic monitoring the crane mechanism such as motor, gearbox, shaft, bearing, drum, wheel and other rotary mechanism. Leewell's products have been applied to more than 230 QCs and 360 RMGC/RTGC among 20 countries and regions internationally.

By installing the sensors and data collection system on the crane mechanism, monitoring their vibration, temperature, speed, noise, etc., the intelligent system can diagnosis the actual real time status of the mechanism. This can predict and prejudge the failure suffers of the crane components to avoid major equipment accidents and unplanned long-time shutdown that affect terminal operation and efficiency severely. User can also benefit from reducing the maintenance cost and time.

Porteng is honor to be the local agent of Leewell in Malaysia which could provide fully support on Leewell's products and introduce the crane intelligence for the local crane users.

TCK.W Wire Rope Monitoring System



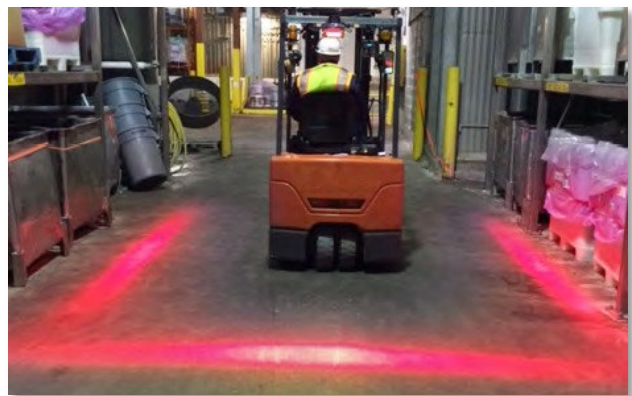
TCK. W invented the world's most advanced "magnetic memory type wire rope AI weak magnetic inspection technology", and systematically solved the technical problems of wire rope online testing, such as "online real-time monitoring of wire rope", "daily report of flaws status", "regular assessment of flaws development trend", "real-time alarm of sudden major hidden danger", etc., flaws inspection rate, detection repetition rate, quantitative accuracy rate, and positioning accuracy rate meets the requirements of Chinese, European and American wire rope testing standards, and the technical level has reached an unprecedented level.

TCK. W can not only monitor the wire rope at high speed for 24h x 365d, but also greatly reduce the labor cost of wire rope inspection, reduce the inspection time and energy consumption, reduce the cost and increase the efficiency, and provide a scientific basis for prolonging the service time of wire rope. At present, TCK. W technology has been widely used in China, the United States, the European Union, Japan, South Korea, Singapore and many other countries.

Porteng is honour to be the agent of TCK.W products in Malaysia and provides one station service from design, supply the suitable model of the monitoring system, installation, to commissioning.



Overhead Crane Safety Warning Light System and Vehicle Safety Light



The overhead crane safety warning light system and vehicle safety light could ensure the safety of pedestrians by projecting safety lines on the floor. Those lines (displayed in a chosen colour) inform the people nearby about the moving load and indicate that the overhead crane and vehicle are in operation. It could also help the crane operator position the crane precisely.

What distinguishes overhead crane lights and vehicle safety lights from other safety tools is their effectiveness in warning employees. Compared to traditional audio alarms that are still commonly used in industrial facilities a 50,000-lumen light is hard to miss or ignore. Forklift drivers, crane operators, and other team members are already exposed to a high level of noise on a daily basis. The loud sound of machines and industrial engines often drowns the alarm what increases the risk of a serious accident for everyone around.

The use of a warning lamp eliminates the above problem – the strong light beam is easy to see no matter the level of noise.



Crane Anti-collision System

RTG and STS Crane are the main operating machinery for the specialized container terminal, and the safety accident-prone equipment in the terminal production. In order to ensure the production safety and improve efficiency, Porteng provides collision avoidance system based on laser, enriches and perfects RTG and STS crane application system. The laser measurement system is used in anti-collision between RTG and RTG, RTG and the people or vehicle, crane to ship, etc. for improving the safety during gantry driving.

Porteng not only supplies the anti-collision sensor, but also provides a turn-key solution from the system design, equipment purchasing, installation, system programming to testing and commissioning.



Our Business Partner



CLC Technology Enterprise Co., Ltd



Changzhou Toptree Auto Lamp Co., Ltd



Leewell Intelligence (Shenzhen) Co., Ltd.



Luoyang Wire Rope Inspection Technology Co., Ltd.

Our Clients

Malaysia



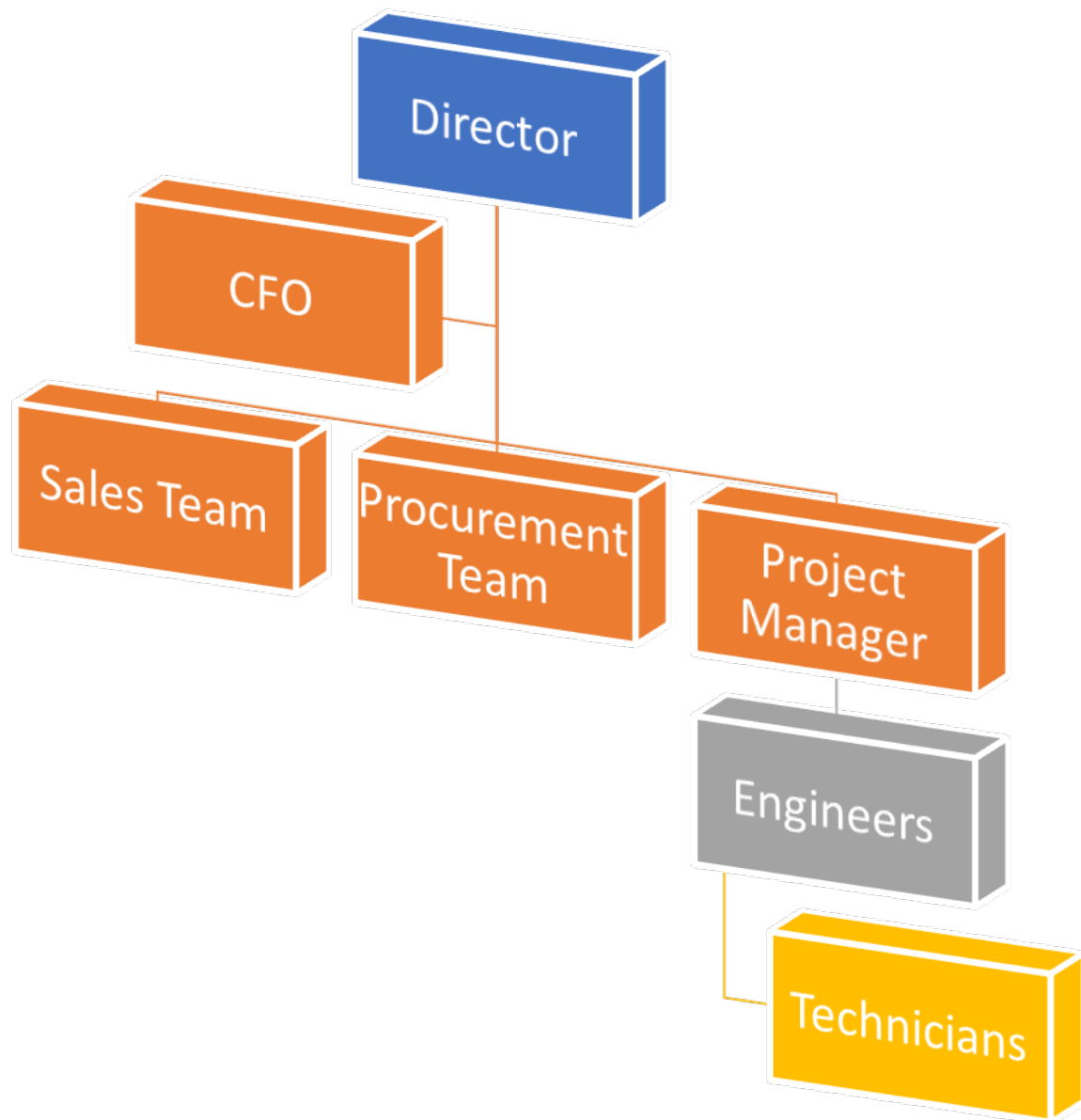
Philippines



Indonesia



Our Company Structure

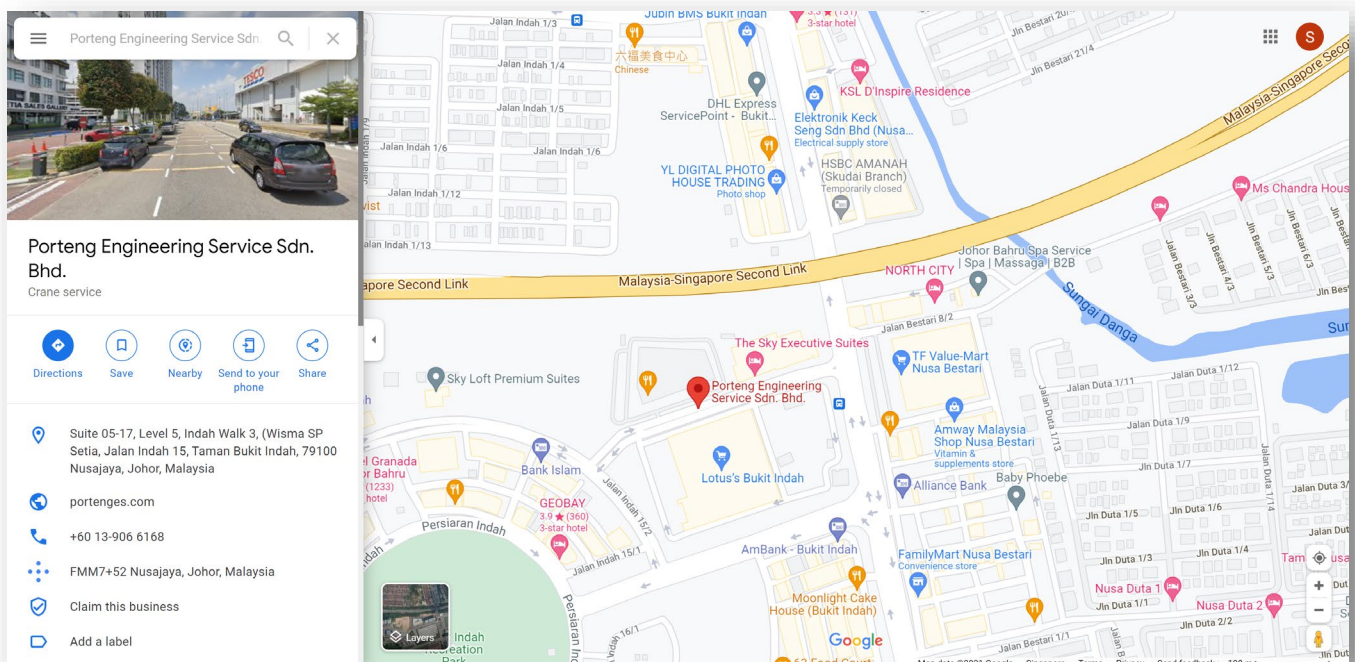


Our Office

Our office located at the Bukit Indah, Iskandar Puteri, Johor which is the heart of industrial district at the South of Malaysia nearby the Port of Tanjung Pelepas, Johor Port and Singapore. This helps us to support our customers more easily and efficient.



Company Address: Suite 05-17, Level 5, Indah Walk 3, (Wisma SP Setia) Jalan Indah 15, Taman Bukit Indah, 79100 Iskandar Puteri, Johor, Malaysia



Porteng Engineering Services Sdn. Bhd.

Suite 05-17, Level 5

Indah Walk 3, (Wisma SP Setia)

Jalan Indah 15, Taman Bukit Indah

79100 Iskandar Puteri

Johor, Malaysia



www.portenges.com