



Advancing staple line security, even in challenging conditions

There's a lot riding on your staple line. The **new ECHELON™+ Stapler with GST Reloads** advances security to deliver fewer leaks at the staple line and better staple formation, even in challenging conditions.^{1,2}



¹ Benchtop testing in porcine tissue ≤ 52 mmHg (Double the 26mmHg average pressure experienced during intra-operative leak test), comparing Ethicon ECHELON+ Stapler PSEE60A with GST Reloads GST60B to Medtronic Signia Stapler with Tri-Staple Reloads EGIA60AMT and Medtronic Endo GIA™ with Tri-Staple™ Reloads EGIA60AMT. Cumulative number of leaked tests (14/30), (23/30), (25/30) respectively, $n=30$ $p < 0.05$. (150356-200818) ² Benchtop testing in 3.3mm and 4.0mm porcine tissue comparing malformed staples between ECHELON+ Stapler with GST Reloads (GST60G, GST60T) to Medtronic Signia™ Stapler with Tri-Staple™ Reloads (EGIA60AMT, EGIA60AXT) and Endo GIA™ with Tri-Staple™ Reloads (EGIA60AMT, EGIA60AXT). Percentage malformed results: 1.14% vs 4.28%, $p < 0.05$. (151140-200826)

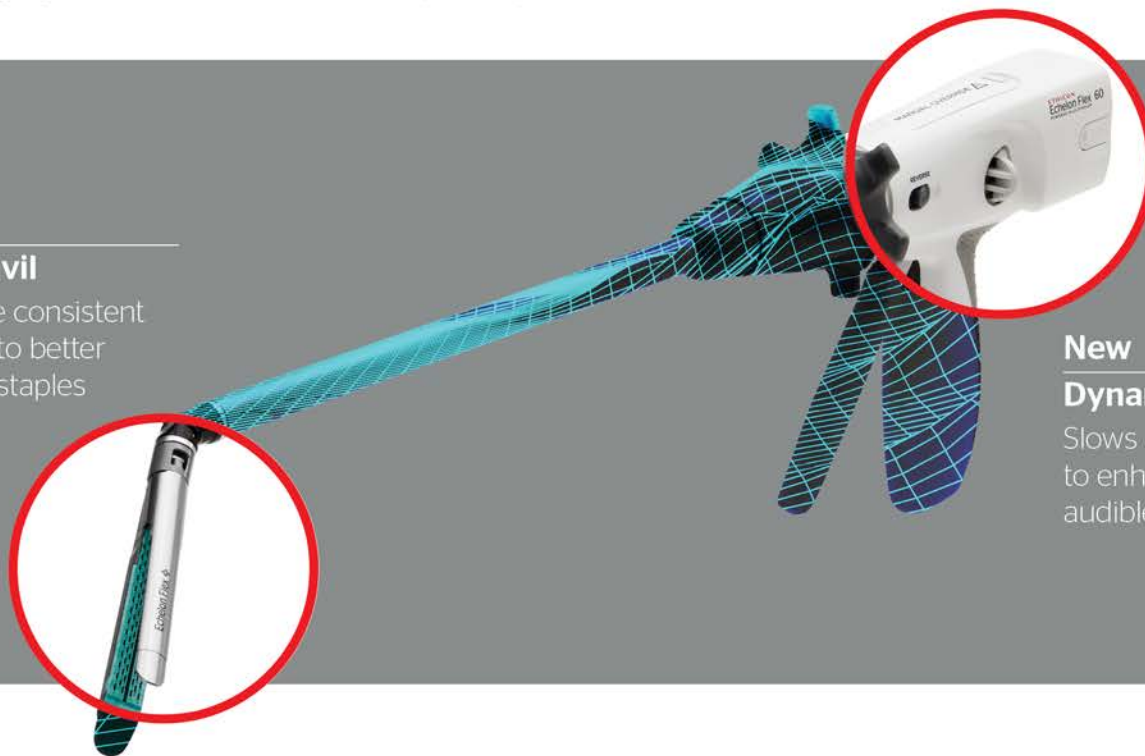
Built to meet the demands of challenging tissue

When stapling, especially in challenging tissue, gentle tissue handling and proper compression are fundamental to ensuring good staple line integrity and helping reduce complications like leaks and bleeds. **The new ECHELON™+ Stapler with GST Reloads advances staple line security**—even in challenging conditions—for a better way to staple.

New

ECHELON™+ Anvil

Designed for more consistent compression and to better capture and form staples



New

Dynamic Firing

Slows as it engages thick tissue to enhance compression and audible feedback

Superior tissue management and control compared to Medtronic powered and manual staplers with Tri-Staple™ Reloads:



**Fewer leaks
at the staple line¹**



**Better staple formation
in thick tissue²**



**More uniform
compression³**



**Less slippage
during firing⁴**

¹ Benchtop testing in porcine tissue $\leq 30\text{mmHg}$ (26mmHg average pressure experienced during intra-operative leak test), comparing Ethicon ECHELON+ Stapler PSEE60A with GST Reloads GST60B to Medtronic Signia™ and Endo GIA™ Staplers with Tri-Staple Reloads EGIA60AMT, $p < 0.05$. (150352-200818) ² Benchtop testing in 3.3mm and 4.0mm porcine tissue comparing malformed staples between ECHELON+ Stapler with GST Reloads (GST60G, GST60T) to Medtronic Signia™ Stapler with Tri-Staple™ Reloads (EGIA60AMT, EGIA60AXT) and Endo GIA™ with Tri-Staple™ Reloads (EGIA60AMT, EGIA60AXT). Percentage malformed results: 1.14% vs 4.28%, $p < 0.05$. (151140-200826) ³ Benchtop testing in 3.2mm synthetic tissue comparing staple line compression between ECHELON+ Stapler with GST Reloads (PSEE60A, GST60B, GST60G) to Medtronic Signia™ and Endo GIA™ Staplers with Tri-Staple™ Reloads (EGIA60AMT). Resulting in a statistically significant compression uniformity, $p < 0.05$. (155751-201014) ⁴ In benchtop testing in porcine tissue, the ECHELON™ GST System (PSEE60A, GST60G) had less mean longitudinal change in 3.3mm thick tissue, 0.94 vs. 3.65, compared to the Signia™ Stapling System (SIGPHANDLE, EGIA60AMT), $p\text{-value} < 0.05$. Based on additional testing, ECHELON+ Stapler with GST Reloads showed less average tissue slippage and was statistically concluded to have at most 0.764mm more tissue slippage than the ECHELON FLEX(TM) GST System ($p=0.05$). (148786-200805)

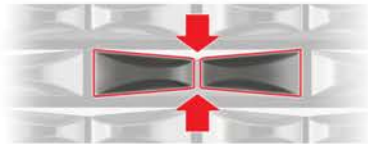
Re-engineered for advanced performance at the staple line



ECHELON™+ Anvil

Refined curvature for more consistent compression and wider tapered pockets to better capture and form staples

Wider tapered anvil pockets
for increased capture area and to guide staples into symmetric B-form



Atraumatic tapered tip
designed for gentler tissue handling and improvedotomy entry



Built on a legacy of **Gripping Surface Technology**



Dynamic Firing

Optimized firing speed that slows more dramatically in thick or dense tissue to enhance compression and audible feedback



Listen as the motor slows to optimize compression in thick tissue

Thin tissue



Thick tissue



Security you can rely on: Consistently outperformed Signia™ and Endo GIA™ Staplers with Tri-Staple™ Reloads¹⁻⁴

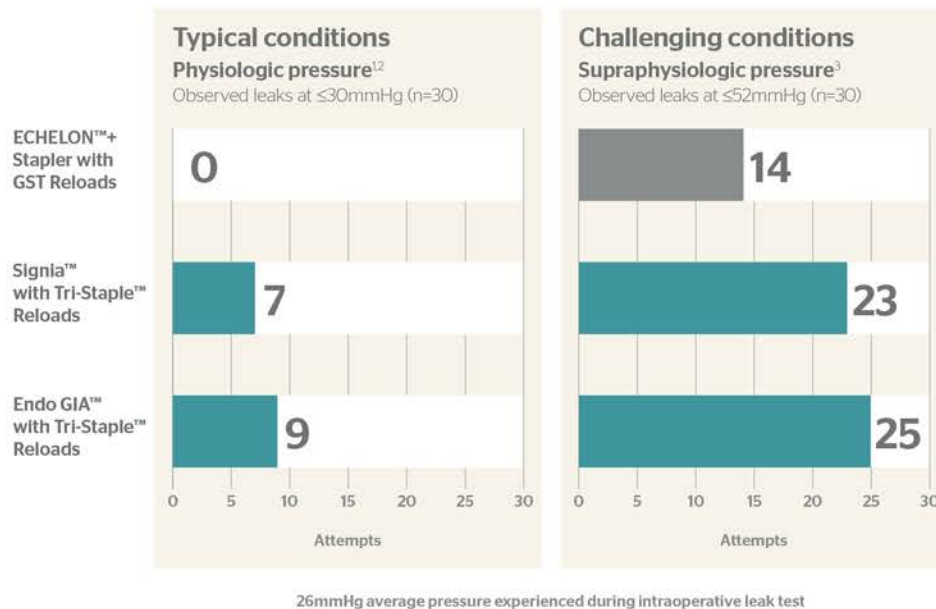


Fewer leaks at the staple line¹⁻³

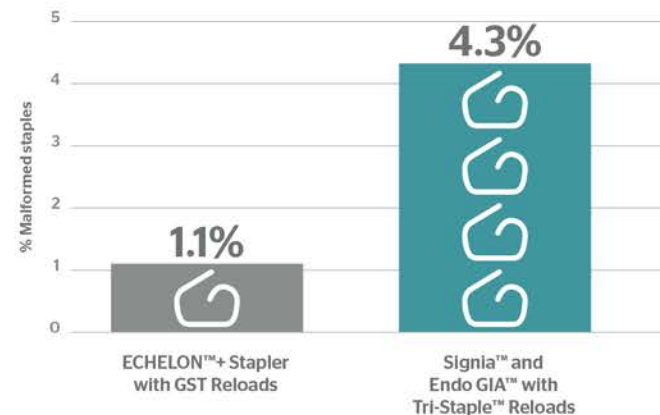


Better staple formation in thick tissue⁴

Observed leaks at the staple line



Percentage of malformed staples in thick tissue⁴



¹ Benchtop testing in porcine tissue ≤ 30mmHg (26mmHg average pressure experienced during intra-operative leak test), comparing Ethicon ECHELON+ Stapler PSEE60A with GST Reloads GST60B to Medtronic Signia Stapler with Tri-Staple Reloads EGIA60AMT. Cumulative number of leaked tests (0/30) & (7/30) respectively, n=30 p < 0.05. (149513-200811) ² Benchtop testing in porcine tissue ≤ 30mmHg (26mmHg average pressure experienced during intra-operative leak test), comparing Ethicon ECHELON+ Stapler PSEE60A with GST Reloads GST60B to Medtronic Endo GIA™ with Tri-Staple™ Reloads EGIA60AMT. Cumulative number of leaked tests (0/30) & (9/30) respectively, n=30 p < 0.05. (149514-200811) ³ Benchtop testing in porcine tissue ≤ 52mmHg (Double the 26mmHg average pressure experienced during intra-operative leak test), comparing Ethicon ECHELON+ Stapler PSEE60A with GST Reloads GST60B to Medtronic Signia Stapler with Tri-Staple Reloads EGIA60AMT and Medtronic EndoGIA with Tri-Staple Reloads EGIA60AMT. Cumulative number of leaked tests (14/30), (23/30), (25/30) respectively, n=30 p < 0.05. (150356-200818) ⁴ Benchtop testing in 3.3mm and 4.0mm porcine tissue comparing malformed staples between ECHELON+ Stapler with GST Reloads (GST60G, GST60T) to Medtronic Signia™ Stapler with Tri-Staple™ Reloads (EGIA60AMT, EGIA60AXT) and Endo GIA™ with Tri-Staple™ Reloads (EGIA60AMT, EGIA60AXT). Percentage malformed results: 114% vs 4.28%, p < 0.05. (151140-200826)

Superior tissue management and control compared to Medtronic powered and manual staplers with Tri-Staple™ Reloads

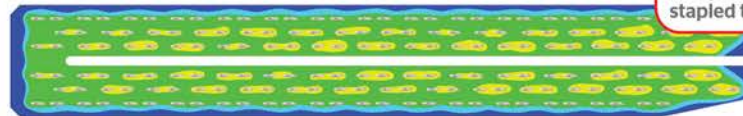


More uniform compression¹

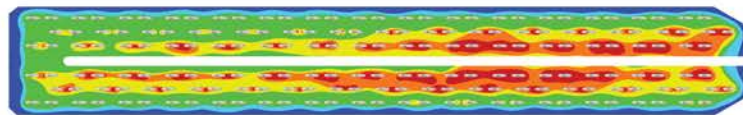


Less tissue slippage during firing²

Two-stage compression designed to prepare tissue for stapling and achieve a uniform staple height



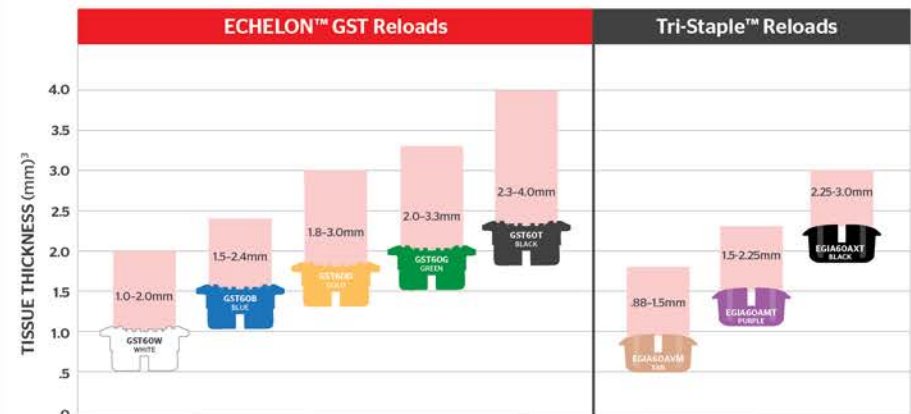
ECHELON™+ Stapler with GST Reloads



Endo GIA™ with Tri-Staple™ Reloads



Exceptional staple line integrity, across the broadest range of tissue thickness³



¹ Benchtop testing in 3.2mm synthetic tissue comparing staple line compression between ECHELON+ Stapler with GST Reloads (PSEE60A, GST60B, GST60G) to Medtronic Signia™ and Endo GIA™ Staplers with Tri-Staple™ Reloads (EGIA60AMT). Resulting in a statistically significant compression uniformity, $p < 0.05$. (155751-201014) ² In benchtop testing in porcine tissue, the ECHELON™ GST System (PSEE60A, GST60G) had less mean longitudinal change in 3.3mm thick tissue, 0.94 vs. 3.65, compared to the Signia™ Stapling System (SIGPHANDLE, EGIA60AMT), p -value < 0.05 . Based on additional testing, ECHELON+ Stapler with GST Reloads showed less average tissue slippage and was statistically concluded to have at most 0.764mm more tissue slippage than the ECHELON FLEX™ GST System ($p = 0.05$). (148786-200805) ³ The ECHELON FLEX™ GST System was designed and tested to meet rigorous design requirements for staple line integrity. The GST System accommodates a tissue thickness range of 1.0mm to 4.0mm (measured at 8g/mm², tissue comfortably compressed to closed staple height during firing per IFU) while the Medtronic Tri-Staple™ portfolio is intended for a tissue thickness range of 0.75mm to 3.0mm (per IFU & materials downloaded from Medtronic website on Nov 16, 2016).

ECHELON Staplers: Performance-driven results, backed by evidence

Design differences matter when it comes to performance and results. Since 2017, the use of ECHELON Powered Staplers has demonstrated an association with improved clinical and economic outcomes—across tissue types, patient populations and countries—in large-scale, real-world, peer-reviewed studies.¹

ECHELON > a better way to staple

Improved clinical and economic outcomes



**Reduced
hemostasis-related
complications²**



**Reduced
hospital costs²**



**Improved
efficiency**

Demonstrated by large-scale, real-world evidence¹



5
studies



4
countries



700+
hospitals



40+
authors




41,500+
patients

¹ Based on literature search performed May 2019. Large-scale is defined as sample size greater than 3,500 cases. ² Rawlins L, Johnson BH, Johnston SS, et al. Comparative Effectiveness Assessment of Two Powered Surgical Stapling Platforms in Laparoscopic Sleeve Gastrectomy: A Retrospective Matched Study. Medical Devices: Evidence and Research. 2020;13:195-204. doi: <https://doi.org/10.2147/MDER.S256237>. Analysis of clinical and economic outcomes from 982 laparoscopic sleeve gastrectomy cases between March 1, 2017 and December 31, 2018 from Premier Healthcare Database (0.61% versus 2.24%, p=0.0012; \$9,771 vs. \$10,487, p<0.001). (140350-200514).

Ordering information

ECHELON™+ Stapler with GST Reloads (ECHELON FLEX™ Powered Plus Stapler and ECHELON ENDOPATH™ Reloads with GST)

Code	Description		Jaw length	Qty
PCEE45A	Compact Articulating Endoscopic Linear Cutter,* 280mm		45mm	3
PCEE60A			60mm	
PSEE45A	Standard Articulating Endoscopic Linear Cutter,* 340mm		45mm	3
PSEE60A			60mm	
PLEE45A	Long Articulating Endoscopic Linear Cutter,* 440mm		45mm	3
PLEE60A			60mm	

*Instrument does not contain a reload

*Instrument does not contain a reload

Reloads

Code	Color	Description		Open staple height	Closed staple height	Qty
ECR45M	Gray	Gray reload intended for use in mesentery/thin tissue (Reload does not include Gripping Surface Technology)		2.0mm	0.75mm	12
ECR60M						
GST45W	White	White reload intended for use in vascular/thin tissue		2.6mm	1.0mm	12
GST60W						
GST45B	Blue	Blue reload intended for use in regular tissue		3.6mm	1.5mm	12
GST60B						
GST45D	Gold	Gold reload intended for use in regular/thick tissue		3.8mm	1.8mm	12
GST60D						
GST45G	Green	Green reload intended for use in thick tissue		4.1mm	2.0mm	12
GST60G						
GST45T	Black	Black reload intended for use in very thick tissue		4.2mm	2.3mm	12
GST60T						

ECHELON ENDOPATH™ Staple Line Reinforcement

Code	Description		Qty
ECH60R	ECHELON ENDOPATH™ Staple Line Reinforcement		6

How to order

All purchase orders are made to Johnson & Johnson Health Care Systems, Inc. (JJHCS).

If you want to order direct, you may order electronically (online) at:

- <https://us.jjcustomerconnect.com> or 1-866-565-4283
- Electronic Data Interchange (EDI) Helpline: 1-800-262-2888

Or, to place a non-electronic (manual) order, contact Johnson & Johnson Health Care Systems Inc. at 1-800-255-2500 between 8:30 a.m. and 6:30 p.m. (Eastern Standard Time) or fax us at 1-732-562-2212.

Customer support

For product use assistance, clinical guidelines, service and repair, emergency assistance, copy of a 510(k) clearance letter, or complaints, please contact our Customer Support Center by calling 877-ETHICON (384-4266). Our support center is staffed 24 hours a day, 7 days a week by qualified nurses to answer your product-related questions.

Learn more at: ethicon.com/EchelonPlus