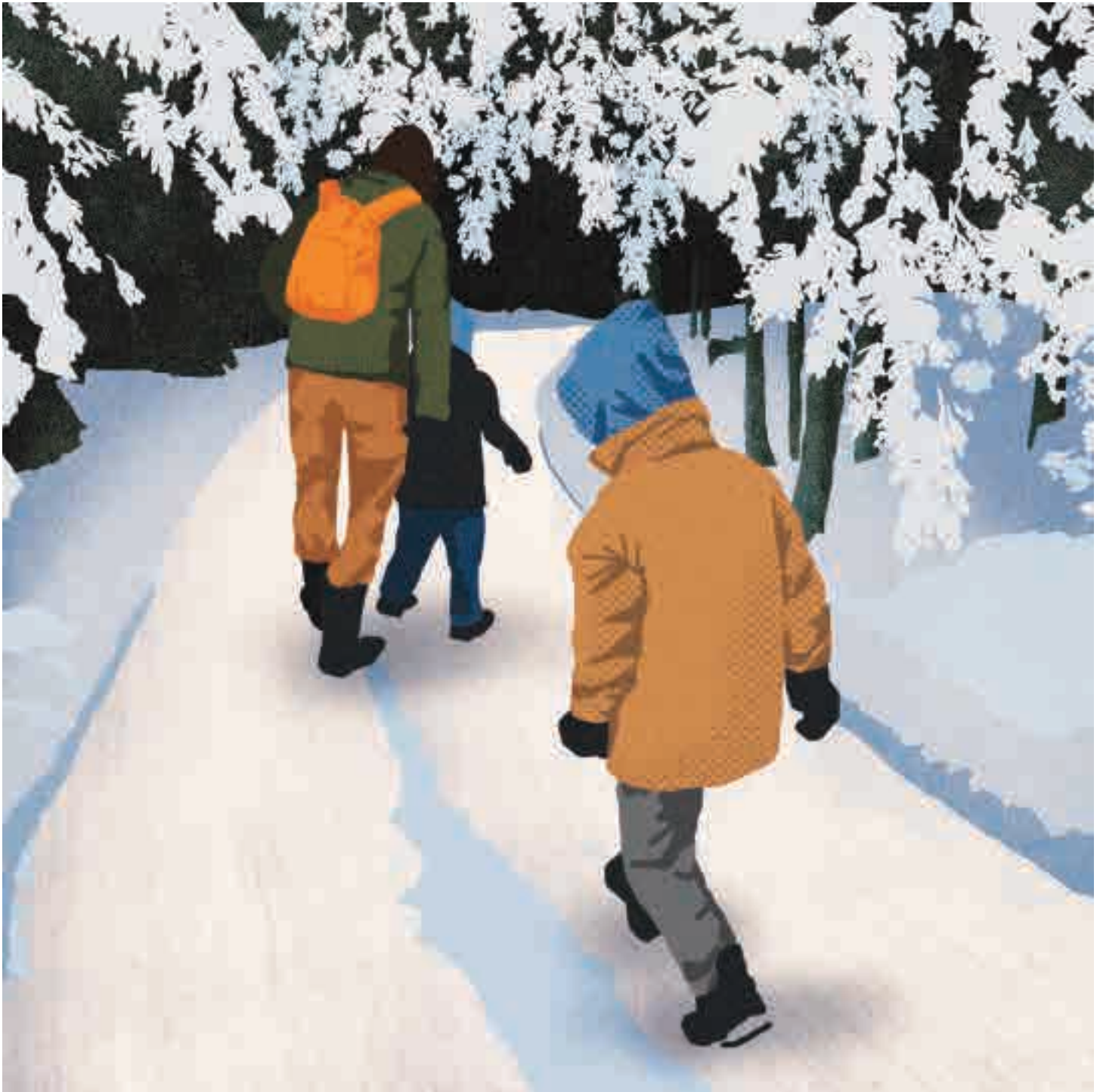


ᑲᐃᓂᓂ: ᐅᐱᐱᐅᓂᐅᓂᓂ ᐅ ᐃᐅᓂᓂ ᐅᐅᐅᓂᓂ

ᐃᐅᐃᓂᓂ ᐅᓂᓂᓂᓂᓂᓂ ᐃᐅᐃᓂᓂᓂᓂᓂ

ᐃᐅᐅᓂ ᐱᓂᓂᓂᓂ ᐅᐅᐅᓂᓂ

ᐅᓂᐅᓂᓂ ᐃᓂᓂᓂᓂᓂᓂ



ግንባታ: ግንባታ ስራ ላይ ማህበራዊ

ግንባታ ስራ ላይ ማህበራዊ ስራ ላይ ማህበራዊ ስራ ላይ



ግንባታ ስራ ላይ ማህበራዊ ስራ ላይ

ግንባታ ስራ ላይ ማህበራዊ ስራ ላይ ማህበራዊ ስራ ላይ ማህበራዊ ስራ ላይ

ግንባታ ስራ ላይ ማህበራዊ ስራ ላይ ማህበራዊ ስራ ላይ ማህበራዊ ስራ ላይ

ግንባታ ስራ ላይ ማህበራዊ ስራ ላይ ማህበራዊ ስራ ላይ ማህበራዊ ስራ ላይ

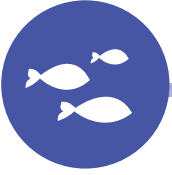


ግንባታ ስራ ላይ ማህበራዊ ስራ ላይ

ግንባታ ስራ ላይ ማህበራዊ ስራ ላይ ማህበራዊ ስራ ላይ ማህበራዊ ስራ ላይ

ግንባታ ስራ ላይ ማህበራዊ ስራ ላይ ማህበራዊ ስራ ላይ ማህበራዊ ስራ ላይ

ግንባታ ስራ ላይ ማህበራዊ ስራ ላይ ማህበራዊ ስራ ላይ ማህበራዊ ስራ ላይ



es9a3C7.3CL3/4< rrb3

iPad LL3C°Ād·Λ\, ḲbUḲrb3 Λd·Λd
4<rrb3, V<3, L3Ḳa°Ā"Δb3d3,
L3Ḳa"Δb3d\



abrr9 Δ.3/b9.r "Δ7.Δ.3

ḲΛLḲḲLb3 Ḳ 4ḲP3 UḲ<"Δ 4ḲḲΔ·V<3
ḲΛLḲḲLb3 4"p° L3Ḳa"Δb3 abrr9Δ.3
Ḳ<P3rb3



Δar9Δ. a3/9ΔJ LḲḲar9Ḳ3

4<r3a3 9Ḳ3r 4. <3rbU3, ḲḲb3
L3ḲaPḲb3 Ḳ4L L3Ḳσrb3, rḲ3r
Δ. r3Ḳ3 σḲḲr9Δ.3 Ḳ3r ḲΛLḲḲLb3
ḲΔḲḲP3.

<PḲ3 PḲḲL4·b3\ Ḳ<"Δb3σ
rḲḲḲ4·- ḲCḲΔ. a3 Ḳ4L ḲΔJ
4. <3CḲ4·-, r3brr3Ḳ3 ḲΔJḲḲd4·-
Ḳa3C7.3r9Δ. a3 Ḳa ḲbḲP"ḲΔ. a3.

ḲḲ3CḲ"Δ ḲLḲḲrbU3 4ḲḲΔ·V<Ḳ3
Ḳ4L ḲΔJ 4ḲσḲ.Ḳ3, r4ḲḲḲḲ3
Ḳσ4ḲḲḲḲb3 Ḳ4L ḲΔσḲb·\ rḲḲC3\
ḲΔJḲḲd- ḲbḲP"ḲΔ.3.



σ C^ε Δ^ε C L 9 Δ^ε

(Γ C τ^ε R b ε^ε < P ε^ε / Γ J L Γ C τ^ε C^ε \ Δ C ε^ε \ P 9^ε C L Δ^ε)

b V J ε d \ Δ^ε P Δ^ε P Λ ε b r r b U Δ^ε Δ P ∇^ε σ Δ^ε \ Δ σ J σ σ Δ^ε \ Γ J ε Γ C Γ Γ C ε Δ^ε P Δ^ε.

Δ P ∇^ε σ Δ^ε \ Δ σ J σ σ Δ^ε \, b P Δ C Λ σ 9 Δ^ε - Δ^ε Δ L Δ^ε P^ε \ Δ J P 9^ε C^ε d^ε Δ ε b τ^ε Δ^ε Γ ε Δ^ε C ε^ε \ ∇ P R^ε τ^ε C d \. b P Λ C R b U P^ε Δ σ ∇^ε σ Δ^ε Δ J^ε P^ε Γ ε ∇^ε υ b - C C L Δ^ε ε^ε Γ ε ∇ Δ^ε P^ε Γ^ε P^ε P^ε b P ε Δ^ε Δ L Γ^ε ∇^ε Δ^ε P Δ^ε σ^ε \. Δ σ J σ σ C^ε J^ε 9 Δ^ε ε^ε ∇^ε υ b - Δ^ε P R Δ V σ J Δ^ε \ Δ^ε P b^ε \ R Δ^ε P Λ L Π^ε Δ^ε -, Δ L Δ^ε Δ^ε σ^ε \, Γ ε Δ ε b τ^ε Δ^ε b Δ J σ Γ C Δ^ε ε d Γ ε σ Δ^ε \. Δ^ε Δ L b Δ J V ε P 9^ε P^ε 9 Δ^ε - Δ^ε P Δ^ε ε^ε, b Λ Δ σ d P P ε L b σ Δ^ε \, Δ P Δ J C L Γ 9 Λ L Π^ε L b \ Γ ε b P R^ε τ^ε C d P^ε J^ε P σ P 9 Δ^ε ε^ε b C R b U P^ε ∇ ε b ε r b U \ 9 Δ J C Λ υ d r ε \ Γ ε 9 Δ^ε P Γ ε > L b \ Δ^ε P Γ ε Δ P C b Γ \ b C J Λ L Π^ε Δ^ε -.

b Δ^ε P σ b σ Δ^ε \ Δ^ε P b^ε \ Γ J^ε 9 d ε^ε C R b U Δ^ε, Δ σ ∇^ε σ Δ^ε b ε ε C ∇^ε P 9 Δ^ε, P ε J 9 Δ^ε, ∇ J^ε P σ b U P^ε b L υ P P^ε Δ^ε P L υ d J^ε, Γ ε ∇ P Π b σ Δ^ε \. Δ σ ∇^ε σ Δ^ε b C R b U P^ε Δ J Δ U Δ^ε P P ε L 9 Δ^ε ε^ε, 9 σ C R b U P^ε, Γ ε ε ε d J Δ^ε ε^ε b P R^ε τ^ε R b U P^ε b Δ J υ P^ε P^ε b P ε Δ σ σ Δ^ε \ Γ ε Γ^ε ∇^ε Δ^ε P Δ^ε σ^ε \. Δ σ J σ σ Δ^ε \ Δ σ Γ C C ε Δ^ε ∇ P R^ε τ^ε C d \ b ε \ Γ C σ b U \ b Δ J Λ J υ L b P^ε b P ε Δ^ε P Δ^ε, ∇ P 9^ε P^ε b U \ 9 C C L Δ^ε - b Δ C Λ σ b U P^ε Δ^ε P Δ^ε ε^ε P P 9^ε P^ε b U \ ∇ P R^ε τ^ε C d \ b Δ J P σ b σ υ P^ε Δ^ε P Δ^ε ε^ε Γ ε P ∇^ε σ C Δ^ε P L b P^ε.

Δ < J Γ Γ ε, b C R b U P^ε b J^ε P σ b σ Δ^ε \ Δ^ε P^ε b^ε \ b Δ^ε ∇ C R Δ^ε P Λ L R^ε Δ ε σ Δ^ε \; Δ J υ R L ε R r b U P^ε Δ ε b τ^ε Δ^ε Γ ε Δ σ σ Δ^ε P Δ^ε Π Δ^ε. P R ε \ Δ^ε P P ε L 9 Δ^ε \ ∇^ε υ b - P 9^ε P^ε 9 Δ^ε ε^ε Γ ε ∇ P P ε L Δ^ε - Δ^ε P σ P Δ^ε \ b Δ σ d Λ L Π^ε Δ^ε -, R Δ^ε P P 9^ε P^ε b U \ R P R^ε τ^ε R b U \ Δ^ε P^ε P ∇^ε Δ^ε ε^ε Γ ε << Γ^ε Δ^ε \ R b ε ∇^ε P^ε R b U \ Γ ε P ε ∇^ε P^ε R b U \ Δ^ε P σ b^ε 9 σ Δ σ d Λ L Π^ε Δ^ε -. b J^ε P σ b σ Δ^ε \ Δ^ε P^ε Γ ε b ε Δ σ d P 9^ε P^ε 9 Δ^ε ε^ε, Π < R J 9 Δ^ε, Γ ε R Δ ε Δ^ε R b U P^ε Δ ε b τ^ε Δ^ε ε^ε b P R^ε τ^ε C d P^ε.

ᐱᑦᑕᑦᑕᑦ

(ᑕᑦᑕᑦ ᑕᑦᑕᑦ/ᑕᑦ ᑕᑦᑕᑦ ᑕᑦᑕᑦ)



ᑕᑦᑕᑦ ᑕᑦᑕᑦ

(ᑕᑦᑕᑦ ᑕᑦᑕᑦ/ᑕᑦ ᑕᑦᑕᑦ)



Name _____

Date _____

ጥያቄ: ሌሎችን ለማግኘት ለሌሎች ህግጋት

Q: From your drawing, describe how one species is dependent on another species

Q: Identify and describe three different animal species you observed during the walk. Include their characteristics and adaptations.

Q: How might changes to one species affect changes to other species?

Q: What are two examples of how local biodiversity may be affected

Q: What human activities can negatively impact biodiversity?
Provide at least three examples and explain their effects.

Q Give two examples of what can be done to protect local biodiversity

Name _____

Date _____

ጥያቄ: ሌሎችን ለማግኘት ለሌሎች ማግኘት ማስፈሰስ

Q: From your drawing, describe how one species is dependent on another species

Q: Identify and describe three different animal species you observed during the walk. Include their characteristics and adaptations.

Q: How might changes to one species affect changes to other species?

Q: What are two examples of how local biodiversity may be affected

Q: What human activities can negatively impact biodiversity? Provide at least three examples and explain their effects.

Q Give two examples of what can be done to protect local biodiversity