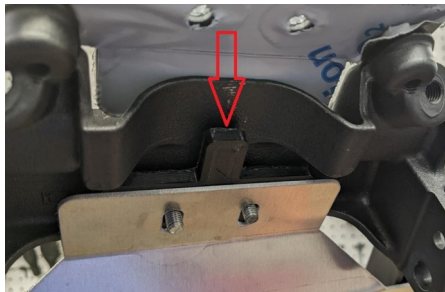
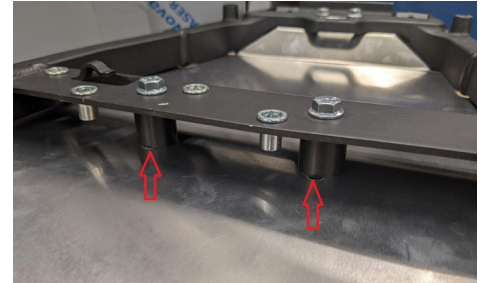


Dogwood Racing ZX14 Inner Fender

- Starting with a bare subframe, hold the fender up against the bottom of the subframe.
- Attach the two middle fastening points using the two longest bolts and round spacers. Do not fully tighten nuts until all fasteners are in place.
- Place the rear spacer between the fender and subframe, and attach the rear of the fender with the supplied bolts.



- Place the front spacer between the fender and the factory cross bar and attach with the supplied bolts.



- Attach the rear flap with the two short bolts.
- If using the Dogwood Racing TailBone, place the 3/16" thick plate on top of the rear flap, use the two recessed bolts that came with your TailBone to mount the flap and TailBone flat bar. Longer 1/4" bolts included to mount TailBone.

