



Site Specific Safety Plan

Corehole #5 Jetstream Wells Pads #1, #2

The Site-Specific Safety Plan (SSSP)

Pulsar Helium has the project goal of ZERO accidents and ZERO injuries, with work tasks designed to minimize or eliminate hazards to personnel, processes, equipment, and the general public. No worker should ever perform a task that may endanger their own safety and health or that of others.

This SSSP outlines the Safety, Health, and Environment

Environment (SHE) requirements and guidelines developed for the Jetstream Well Pads #1 & #2 project. These requirements are written to help protect site personnel, visitors, and the general public from exposure to potential SHE related hazards on the job site. There are several plans and actions that are included to ensure that we act to protect the environment, the general public, and the workforce during the construction, drilling, completions and any SIMOPS scope of operations. This plan shall be updated if there are major changes to project conditions, situations or exposures.

Introduction

The Contractor shall have sole and complete responsibility for the implementation of a worksite safety plan and shall take necessary precautions for the health and safety of their employees and fully comply with applicable provisions of all sections of 29 CFR 1910-OSHA General Industry Safety and Health Standards, 29 CFR 1926-OSHA Construction Safety and Health Standards and all standards or codes referred to in the listed document and any other applicable standards. Contractors must also have emergency plans for their operations and be familiar with the Incident Command System and their role(s) within it.

The purpose of this Site-Specific Safety Plan is to identify risks associated with the operations on the Pulsar Helium Jetstream Well Pads #1 & #2 site and eliminate or reduce the risks to an acceptable level.

Due to the changing nature of health and safety regulations, and because new information is constantly becoming available, this plan is subject to change without notice.



Site Specific Safety Plan

Corehole #5 Jetstream Wells Pads #1, #2

Table Of Contents

Statement of Company Policy

Section 1 Scope of Work

Section 2 Emergency Contact/ Management Information

Section 3 Incident Management

Section 4 Training

Section 5 Regulatory Safety Requirements

- Physical Work Environment, Subparts D and E
- Powered Platforms, Manlifts, and Vehicle-mounted Work Platforms, Subpart F
- Environmental Controls, Subparts G and J
- Personal Protective Equipment, Subpart I
- Toxic and Hazardous Materials, Subparts H and Z
- Materials Handling and Storage, Subpart N
- Fire Protection and Welding, Subparts L and Q
- Machinery: Large and Small, Subparts O and P
- Electrical, Subpart S
- Construction (29 CFR 1926)

Section 6 Orientation

Section 7 Posting of the SSSP



Site Specific Safety Plan

Corehole #5 Jetstream Wells Pads #1, #2

Safety, Health & Environment Policy Statement

Pulsar Helium Inc.

At Pulsar Helium Inc., the safety, health, and well-being of our employees, contractors, and the communities in which we operate are our top priorities. We are committed to maintaining a safe and healthy work environment through proactive risk management, continuous improvement, and leadership accountability. Our goal is for every individual to return home safely every day.

Our Commitment to Safety:

We believe that all incidents are preventable.

We establish and enforce rigorous safety standards, policies, and procedures to identify and manage workplace hazards and risks.

We expect all personnel to understand and take responsibility for their own health and safety, as well as that of others.

We are dedicated to ongoing safety training and leadership to promote a culture of safety excellence.

Environmental Responsibility:

We are committed to protecting and preserving the environment by minimizing our environmental impact throughout the life cycle of our operations.

We go beyond compliance with environmental regulations, striving for operational excellence through sustainable practices.

We are dedicated to using innovative solutions to conserve resources, reduce waste, and prevent pollution.

We transparently monitor and report our environmental performance, continuously seeking opportunities for improvement.

Sustainability and Community Partnership:

We believe in responsible resource development that benefits all stakeholders while protecting the environment and supporting sustainable growth.

We actively engage with local communities to create lasting positive impacts and contribute to regional prosperity.

Our investments and partnerships are focused on education, social services, health, arts and culture, and infrastructure development.

Commitment to Leadership and Accountability:

We hold ourselves to the highest standards of integrity, accountability, and transparency in all our actions and reporting.

We are dedicated to continuous improvement through leadership, innovation, and collaboration.

By upholding these principles, Pulsar Helium Inc. is committed to fostering a safe, healthy, and environmentally responsible workplace, ensuring sustainable growth and shared prosperity for our employees, communities, and stakeholders.

Thomas Abraham-James
Chief Executive Officer,
Pulsar Helium Inc.

Site Specific Safety Plan
Corehole #5 Jetstream Wells Pads #1, #2**Section 1: Scope Of Work**

The Jetstream Well Pads #1 & #2 Project involves many independent operations and contactors in which the events of any one operation may impact the safety of personnel or equipment or the environment of another operation.

At a minimum, this project involves drilling and may involve any of the following.

- rig move operations
- completion operations
- civil construction operations
- facility construction operations
- pipeline construction operations
- flowback operations
- well delivery
- production operations
- may include any incidence where concurrent operations create risk.



Site Specific Safety Plan

Corehole #5 Jetstream Wells Pads #1, #2

Section 2: Emergency Contact Information

Sheriff – Fire – Medical – Air Transport 911

Babbitt Police	(218) 827-2441
Babbitt EMS Fire	(218)-827-2611
Life Link III Air Medical Transport	(612) 638 - 4900
Poison Control	(800) 222-1222
Health-Babbitt Clinic	(218) 827-2176
Pulsar Helium Operation Manager	Steve Campbell (281) 460-5808
Pulsar Helium Safety Health & Environment	(218) 235-8689 Richard Bunker (435) 253-0716
Nearest Hospital (24 HR) Ely-Bloomenson Community Hospital	(218) 365-3271 328 W Conan St, Ely, MN 55731

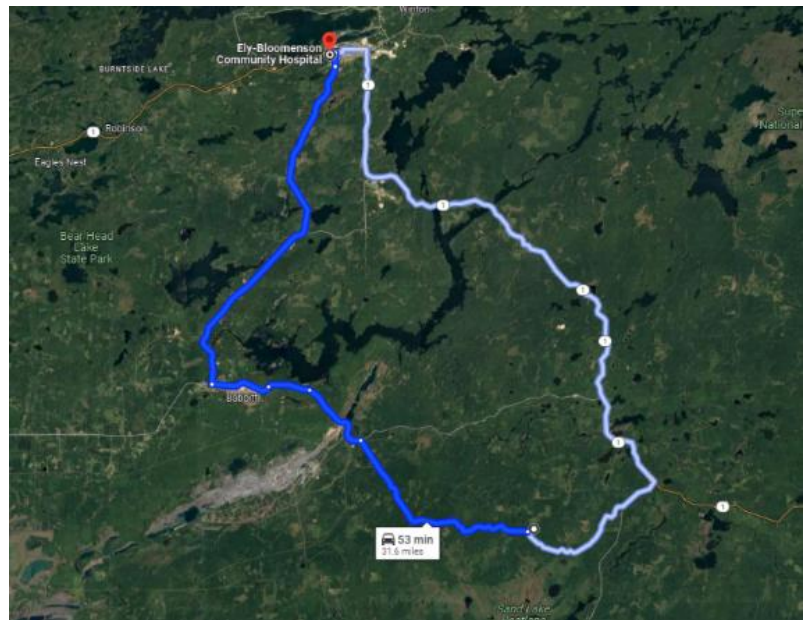
53 min (31.6 miles) via Forest Rte 112 and Hwy 21 N

Head northwest on Forest Rte 112/Dunka Lk Rd toward Forest Rte 114
Continue to follow Forest Rte 112
24 min (8.8 mi)

Take Hwy 21 N to W Harvey St in Ely
27 min (22.5 mi)

Continue on W Harvey St to your destination
1 min (0.3 mi)

Ely-Bloomenson Community Hospital
328 W Conan St, Ely, MN 55731



LOCATION INFORMATION

Location/Intersection Name:	GPS Coordinates:
Corehole #5	47.642282 -91.701594
Jetstream #1, #2	47.634683 -91.701145
Forest Rte. 112/424 & Scott Rd	47.684083, -91.845904
Forest Rte. 112 & US Forest Service Hwy 15/County Hwy 2	47.647224, -91.626869

ADDITIONAL INFORMATION

Site Specific Safety Plan

Corehole #5 Jetstream Wells Pads #1, #2

Emergency Medical Response

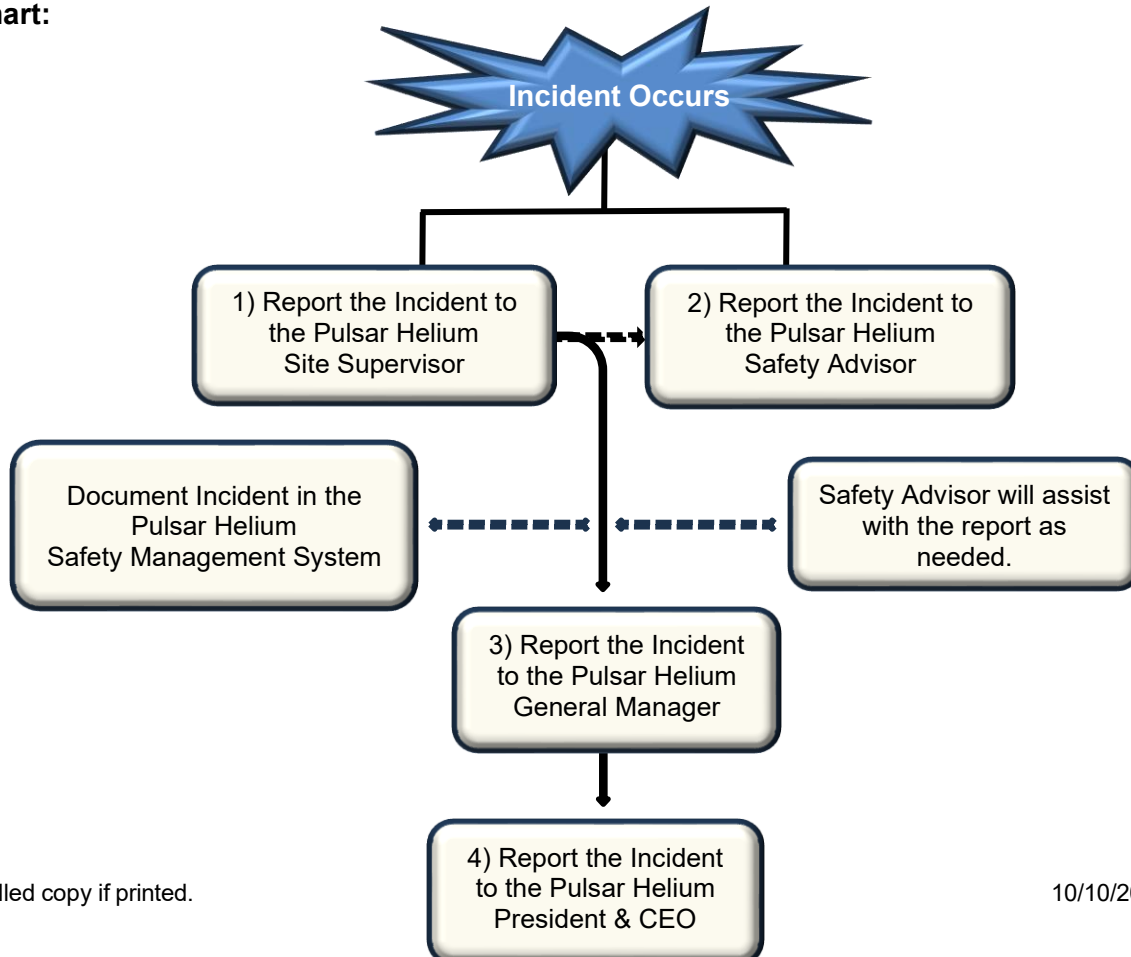
In addition to this SSSP, the contractor shall display posters with emergency telephone numbers and locations of emergency facilities in visible locations and at selected phone locations throughout the project area including subcontractor facilities and at the gate guard if applicable. The following information must be provided:

- Company emergency contacts (name, position, phone number(s))
- Hospital name, location, and number
- Occupational Clinic name, location, and number
- Police department name, location, and number
- Fire department name, location, and number

Section 3: Incident Management

- All accidents, near misses or incidents occurring on a Pulsar Helium location that did or could have resulted in harm equal to or greater than a Level 1 risk level (as noted in the Pulsar Helium Emergency Response Plan (ERP)) must be verbally reported to the Pulsar Operations Supervisor and Pulsar Safety Advisor and entered into the Pulsar Helium SMS as soon as possible.

The incident notification requirements are as noted in the below incident notification flow chart:





Site Specific Safety Plan

Corehole #5 Jetstream Wells Pads #1, #2

Emergency Evacuation

- When the prominent alarm sounds, identify the direction of the wind and **evacuate cross wind and upwind** from the well or source of the hazard.
- Evacuate to the safe muster point as depicted on the following evacuation plan. If the wind changes, move to the muster point most up-wind and furthest from of the gas release, fire or other hazard.
- The prospective contractor management will respond to the muster points and assist with a head count. They will report the head count to the site supervisor and assist with rescue if trained/qualified.
- Do not leave location during an emergency evacuation until you have been accounted for and received permission from the site supervisor or their delegate.
- DO NOT start your vehicle or any power tools during a gas release.
- DO NOT smoke during a gas release.
- Extinguish all cigarettes and smoldering cigarettes in the butt can when in gas release conditions.



Evacuation Routes

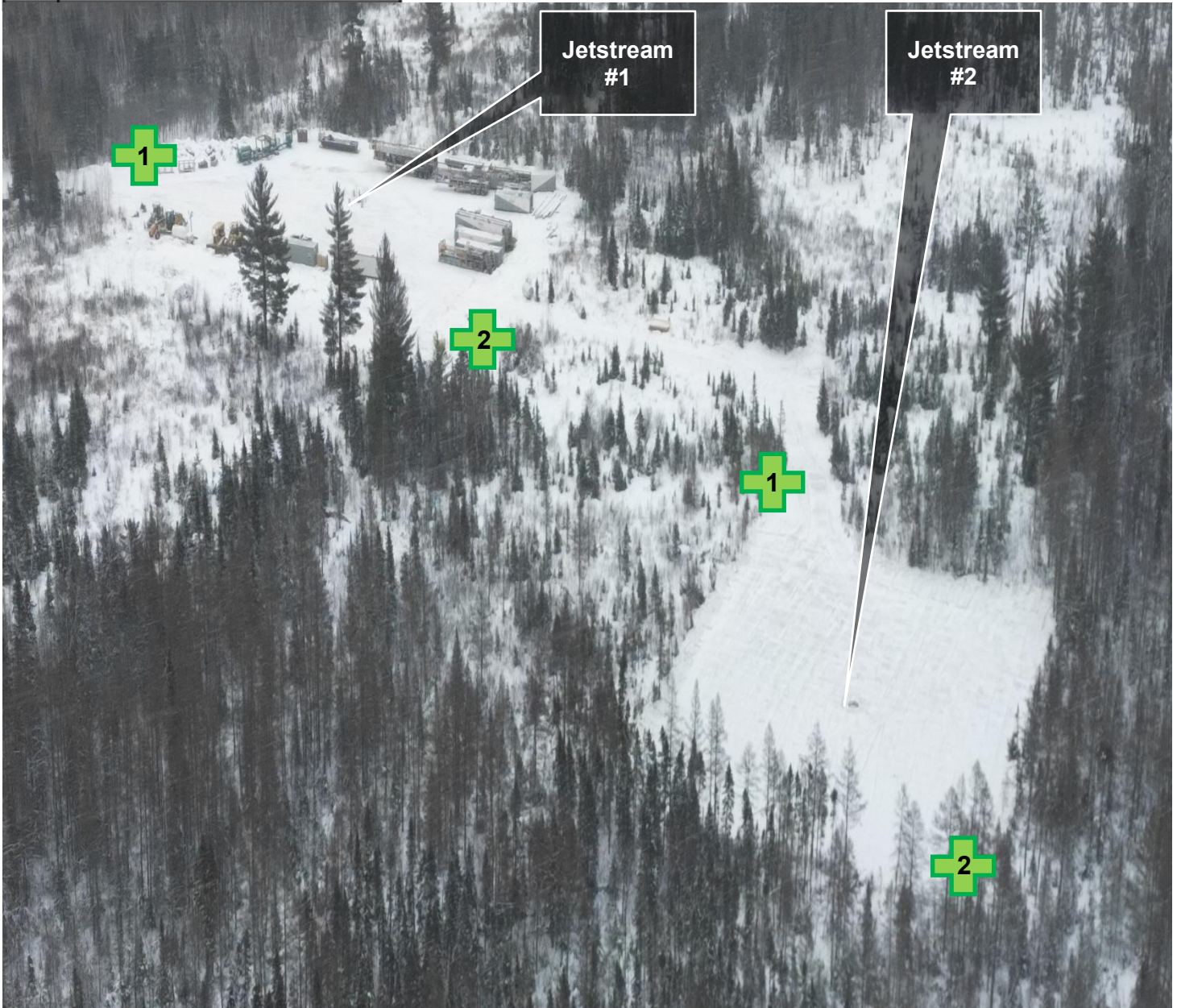
- Evacuation routes are intended for emergencies requiring evacuation.
- Operation will establish muster points for their location and activities.
- The following is intended to depict the muster points in the event of a gas release or other emergency (not a drill). It is important you evacuate cross and up-wind and muster at the most upwind location furthest from the source of the gas release, fire or other hazardous condition requiring evacuation.

Site Specific Safety Plan
Corehole #5 Jetstream Wells Pads #1, #2

Evacuation Routes

Evacuate cross and upwind away from the hazard source.

 N	JETSTREAM #1 & #2
 1	1 Primary Muster 2 Secondary Muster



Site Specific Safety Plan
Corehole #5 Jetstream Wells Pads #1, #2**Section 4: Training**

- Pulsar Helium requires all personnel who work on a Company location to complete a Pulsar Helium Safety Orientation. The orientation will cover safety procedures for operations that may be encountered on a Company operation including construction, drilling, completions, well start-up and production.
- Contractor shall hold daily safety meetings prior to the start of each work shift. The meeting should have a duration of at least 15 minutes and must be documented (all attendees must sign in).
- Contractors should conduct periodic “tailgate” safety meetings as conditions, people, and other factors change throughout the shift.
- Contractors will keep an Emergency Action Plan on location and coordinate with Pulsar on drills and Incident Command System roles and coordination.
- It is required that all Pulsar Helium contractors maintain a comprehensive safety and health training program that at a minimum meets regulatory and internal company requirements.
- The contractor is expected to maintain training records electronically and/or on site.
- Contractors shall provide employees with effective information and training on hazardous chemicals in their work area at the time of their initial assignment, and whenever a new chemical is introduced to the worksite. Chemical-specific information must always be available through labels and safety data Jetstream Well Pads #1 & #2ets. Pulsar Helium will maintain an SDS library of chemicals known or anticipated to be present on any given operation at: <https://safehe.com/right-to-know>

Site Specific Safety Plan
Corehole #5 Jetstream Wells Pads #1, #2**Section 5: Regulatory Safety Requirements**

It is the policy of Pulsar Helium to comply with environmental, health and safety laws and regulations as outlined below. Pulsar Helium will maintain a safety assessment program to help ensure contractors meet the minimum regulatory requirements as well as their company specific internal requirements that may go beyond the minimum regulatory requirements.

OSHA Standards

The General Duty Clause of the OSH Act (the law that created OSHA) requires employers to provide workers with a safe workplace that does not have any recognized hazards that cause or are likely to cause death or serious injury. Exposures to hazards present in the well drilling, servicing, and storage industry are addressed in specific standards for general industry.

As mentioned in the letter of interpretation, [Applicability of 29 CFR 1926 to oil and gas well drilling and servicing operations](#), (April 27, 2009), site preparation is the only aspect of oil and gas well drilling and servicing operations covered by 29 CFR 1926. Site preparation includes activities such as leveling the site, trenching, and excavation. All other aspects of oil and gas well drilling and servicing operations are covered by 29 CFR 1910; when a serious hazard exists in the workplace that is not addressed by a specific OSHA standard, Section 5(a)(1) ("General Duty Clause") of the OSH Act applies.

General Industry ([29 CFR 1910](#))***Physical Work Environment, Subparts D and E***

- Walking and-working surfaces [1910 Subpart D](#)
 - General requirements [1910.22](#)
 - Stairways [1910.25](#)
 - Scaffolds and rope descent systems [1910.27](#)
 - Duty to have fall protection and falling object protection [1910.28](#) [\[related topic page\]](#)
- Means of egress [1910 Subpart E](#)
 - Exit routes, emergency action plans and fire prevention plans [1910 Subpart E](#) [Appendix](#) [\[related topic page\]](#)
 - Design and construction requirements for exit routes [1910.36](#)
 - Maintenance, safeguards, and operational features for exit routes [1910.37](#)

Powered Platforms, Manlifts, and Vehicle-mounted Work Platforms, [Subpart F](#)

- Powered platforms for building maintenance [1910.66](#)
- Personal fall arrest system (section I-mandatory; sections II and III-non-mandatory) [Appendix C](#)

Site Specific Safety Plan
Corehole #5 Jetstream Wells Pads #1, #2**Environmental Controls, Subparts G and J**

- Occupational health and environment control [1910 Subpart G](#)
 - Occupational noise exposure [1910.95](#) Note: 1910.95(o) states: "Paragraphs (c) through (n) of this section shall not apply to employers engaged in oil and gas well drilling and servicing operations."
- General environmental controls [1910 Subpart J](#)
 - Sanitation [1910.141](#)
 - Specifications for accident prevention signs and tags [1910.145](#)
 - Permit-required confined spaces [1910.146](#) [\[related topic page\]](#)
 - The control of hazardous energy (lockout/tagout) [1910.147](#) [\[related topic page\]](#)
 - Typical minimal lockout procedures [Appendix A](#)
 - Medical services and first aid [1910.151](#) [\[related topic page\]](#)

Personal Protective Equipment, Subpart I

- General requirements [1910.132](#) [\[related topic page\]](#)
- Eye and face protection [1910.133](#)
- Respiratory protection [1910.134](#) [\[related topic page\]](#)
- Head protection [1910.135](#)
- Foot protection [1910.136](#)
- Flame Resistant Clothing [Memorandum](#)

Toxic and Hazardous Materials, Subparts H and Z

- Hazardous materials [1910 Subpart H](#)
 - Flammable liquids [1910.106](#)
 - Storage and handling of liquefied petroleum gases [1910.110](#)
 - Hazardous waste operations and emergency response [1910.120](#)
- Toxic and hazardous substances [1910 Subpart Z](#) [\[related topic page\]](#)
 - Air contaminants [1910.1000](#)
 - Bloodborne pathogens [1910.1030](#) [\[related topic page\]](#)
 - Hazard communication [1910.1200](#) [\[related topic page\]](#)

Materials Handling and Storage, Subpart N

- Handling materials - general [1910.176](#)
- Powered industrial trucks [1910.178](#)
- Slings [1910.184](#)

Fire Protection and Welding, Subparts L and Q

- Fire protection [1910 Subpart L](#)
 - Portable fire extinguishers [1910.157](#) [\[related topic page\]](#)
 - Employee alarm systems [1910.165](#)
- Welding, cutting, and brazing [1910 Subpart Q](#)
 - General requirements [1910.252](#) [\[related topic page\]](#)
 - Oxygen-fuel gas welding and cutting [1910.253](#)



Site Specific Safety Plan

Corehole #5 Jetstream Wells Pads #1, #2

Machinery: Large and Small, Subparts O and P

- Machinery and machine guarding [1910 Subpart O](#)
 - General requirements for all machines [1910.212](#) [[related topic page](#)]
 - Abrasive wheel machinery [1910.215](#)
 - Mechanical power-transmission apparatus [1910.219](#)
- Hand and portable powered tools and other hand-held equipment [1910 Subpart P](#)
 - Hand and portable powered tools and equipment, general [1910.242](#) [[related topic page](#)]

Electrical, [Subpart S](#)

- General [1910.303](#) [[related topic page](#)]
- Wiring design and protection [1910.304](#)
- Wiring methods, components, and equipment for general use [1910.305](#)
- Hazardous (classified) locations [1910.307](#)
- Training [1910.332](#)
- Selection and use of work practices [1910.333](#)
- Use of equipment [1910.334](#)
- Safeguards for personnel protection [1910.335](#)

Construction ([29 CFR 1926](#))

- *Welding and Cutting - Subpart J*
- *Electrical - Subpart K*
- *Scaffolds - Subpart L*
- *Fall Protection - Subpart M*
- *Hoists, Elevators, and Conveyers - Subpart N*
- *Excavations - Subpart P*
- *Cranes and Derricks in Construction - Subpart CC*

Section 6: Orientation

Every worker shall complete the Pulsar Helium Safety Orientation prior to starting any work on a Pulsar Helium location or project. The Pulsar Helium Safety Orientation will provide general health and safety information and company specific work rules and procedures. Upon completion of orientation, a record of your completion of the orientation will be available at the Pulsar Helium Safety Management System

Section 7: Posting of the SSSP

This SSSP must be posted at a minimum with the gate guard at the entrance to the location (when applicable), in the Pulsar Helium Company Man trailer on the wall near the entrance door/s, in the Rig Manager office near the entrance door, and in the doghouse of the rig.