







## THE PRIMARY PURPOSE OF INSPECTION IS “QUALITY”



## SPECIFICATION COATING REQUIREMENTS

### SECTION 09900

#### PAINTING

##### PART 1 - GENERAL

##### 1.01 DESCRIPTION

- A. Provide all labour, materials, equipment, services and accessories necessary to furnish and install the work of this Section, complete and functional as indicated in Contract Documents and as specified herein.
- B. Field painting and finishing of all items of works, internal and external surfaces of buildings with exception to those items identified in Section 09870.
- C. Painting work shall be executed by an approved specialist Lower Tier Subcontractor, unless otherwise approved by the Contractor
- D. The Subcontractor shall examine other Sections for the various other trades and shall become thoroughly familiar with all such items and surfaces to be included in this work which are not included in other Sections.
- E. The term "paint" as used herein, includes paints, enamels, stains, varnishes, lacquers, sealers, fillers and other types of coatings whether used as primers, intermediate or finish coats.
- F. Refer to the schedule of finishes in the Specifications for a list of the areas and surfaces to be painted together with the each painting system, surface preparation, textures and lustre (sheen) required for the various surfaces.

##### 1.02 SHOP PAINTED ITEMS

- A. Shop Primed Items: Certain items of work are specified to be shop primed under other individual sections with finish painting specified in this Section.
- B. Shop Finished Items: Certain items of work are specified under individual Sections to be shop finished and do not require finish painting in the field.

##### 1.03 RELATED SECTIONS

SECTION 09900  
PAINTS AND COATINGS

**SIX THINGS ABOUT SPECIFICATIONS**

- 1.
- 2.
- 3.
- 4.
- 5.
- 6.

- B. Do not paint over required labels or equipment identification, performance rating, name, or nomenclature plates.
- C. Do not paint glass, concrete with sealer, nor other finished surfaces, unless otherwise noted or on the Contract Documents.

**1.04 SUBMITTALS**

- A. Product Data: a complete list of materials proposed for use, together with

SECTION 09900  
PAINTS AND COATINGS

**SIX THINGS ABOUT SPECIFICATIONS**

1. COATING SPECS ARE SUPPOSED TO BE SPECIFIC.
- 2.
- 3.
- 4.
- 5.
- 6.

- B. Do not paint over required labels or equipment identification, performance rating, name, or nomenclature plates.
- C. Do not paint glass, concrete with sealer, nor other finished surfaces, unless otherwise noted or on the Contract Documents.

**1.04 SUBMITTALS**

- A. Product Data: a complete list of materials proposed for use, together with

SECTION 09900  
PAINTS AND COATINGS

**SIX THINGS ABOUT SPECIFICATIONS**

1. COATING SPECS ARE SUPPOSED TO BE SPECIFIC.
2. STOP COPYING AND PASTING/PLAGERIZING OLD SPECS!
- 3.
- 4.
- 5.
- 6.

- B. Do not paint over required labels or equipment identification, performance rating, name, or nomenclature plates.
- C. Do not paint glass, concrete with sealer, nor other finished surfaces, unless otherwise noted or on the Contract Documents.

**1.04 SUBMITTALS**

- A. Product Data: a complete list of materials proposed for use, together with

SECTION 09900  
PAINTS AND COATINGS

**SIX THINGS ABOUT SPECIFICATIONS**

1. COATING SPECS ARE SUPPOSED TO BE SPECIFIC.
2. STOP COPYING AND PASTING/PLAGERIZING OLD SPECS!
3. LISTING ALL OF THE APPROPRIATE STANDARDS IS A MUST.
- 4.
- 5.
- 6.

- B. Do not paint over required labels or equipment identification, performance rating, name, or nomenclature plates.
- C. Do not paint glass, concrete with sealer, nor other finished surfaces, unless otherwise noted or on the Contract Documents.

**1.04 SUBMITTALS**

- A. Product Data: a complete list of materials proposed for use, together with

SECTION 09900  
PAINTS AND COATINGS

**SIX THINGS ABOUT SPECIFICATIONS**

1. COATING SPECS ARE SUPPOSED TO BE SPECIFIC.
2. STOP COPYING AND PASTING/PLAGERIZING OLD SPECS!
3. LISTING ALL OF THE APPROPRIATE STANDARDS IS A MUST.
4. USE INDUSTRY STANDARDS TO CREATE A QUALITY COATING SPEC.
- 5.
- 6.

- B. Do not paint over required labels or equipment identification, performance rating, name, or nomenclature plates.
- C. Do not paint glass, concrete with sealer, nor other finished surfaces, unless otherwise noted or on the Contract Documents.

**1.04 SUBMITTALS**

- A. Product Data: a complete list of materials proposed for use, together with

SECTION 09900  
PAINTS AND COATINGS

**SIX THINGS ABOUT SPECIFICATIONS**

1. COATING SPECS ARE SUPPOSED TO BE SPECIFIC.
2. STOP COPYING AND PASTING/PLAGERIZING OLD SPECS!
3. LISTING ALL OF THE APPROPRIATE STANDARDS IS A MUST.
4. USE INDUSTRY STANDARDS TO CREATE A QUALITY COATING SPEC.
5. ASK QUESTIONS TO INDUSTRY PEOPLE.
- 6.

- B. Do not paint over required labels or equipment identification, performance rating, name, or nomenclature plates.
- C. Do not paint glass, concrete with sealer, nor other finished surfaces, unless otherwise noted or on the Contract Documents.

**1.04 SUBMITTALS**

- A. Product Data: a complete list of materials proposed for use, together with



**SECTION 09900  
PAINTS AND COATINGS**

**SIX THINGS ABOUT SPECIFICATIONS**

- 1. COATING SPECS ARE SUPPOSED TO BE SPECIFIC.**
- 2. STOP COPYING AND PASTING/PLAGERIZING OLD SPECS!**
- 3. LISTING ALL OF THE APPROPRIATE STANDARDS IS A MUST.**
- 4. USE INDUSTRY STANDARDS TO CREATE A QUALITY COATING SPEC.**
- 5. ASK QUESTIONS TO INDUSTRY PEOPLE.**
- 6. SHOULD BE RENAMED TO "CONTRACTOR COATING REQUIREMENTS"**

- B. Do not paint over required labels or equipment identification, performance rating, name, or nomenclature plates.
- C. Do not paint glass, concrete with sealer, nor other finished surfaces, unless otherwise noted or on the Contract Documents.

**1.04 SUBMITTALS**

- A. Product Data: a complete list of materials proposed for use, together with

**SECTION 09900  
PAINTS AND COATINGS**

**THE INSPECTOR SHOULD KNOW THE SPEC IN DETAIL**

**1.02 DEFINITIONS**

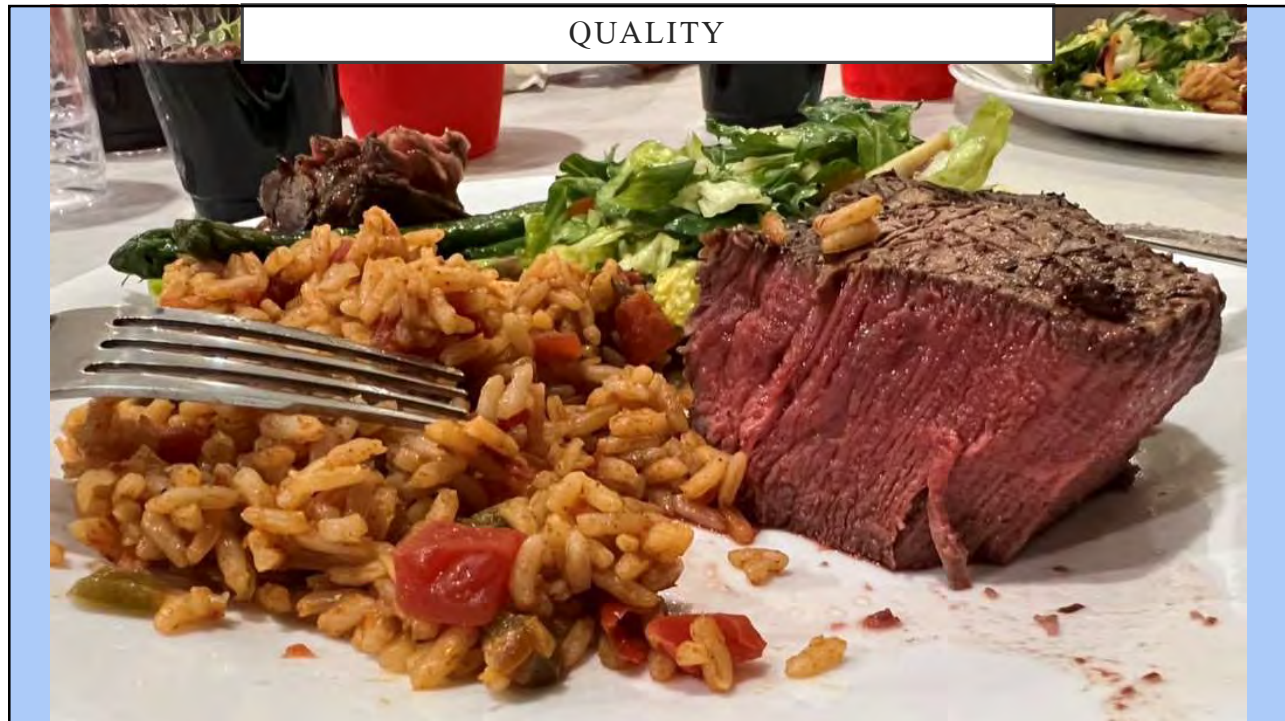
- A. Paint: As used herein, means coating systems materials including primers, emulsions, epoxies, enamels, sealers, fillers, and other applied materials whether used as primer, intermediate, or finish coats.

**1.03 EXCLUDED WORK**

- A. Do not paint metal surfaces of anodized aluminum, stainless steel, and similar finished materials, unless otherwise noted on the Contract Documents.
- B. Do not paint over required labels or equipment identification, performance rating, name, or nomenclature plates.
- C. Do not paint glass, concrete with sealer, nor other finished surfaces, unless otherwise noted or on the Contract Documents.

**1.04 SUBMITTALS**

- A. Product Data: a complete list of materials proposed for use, together with

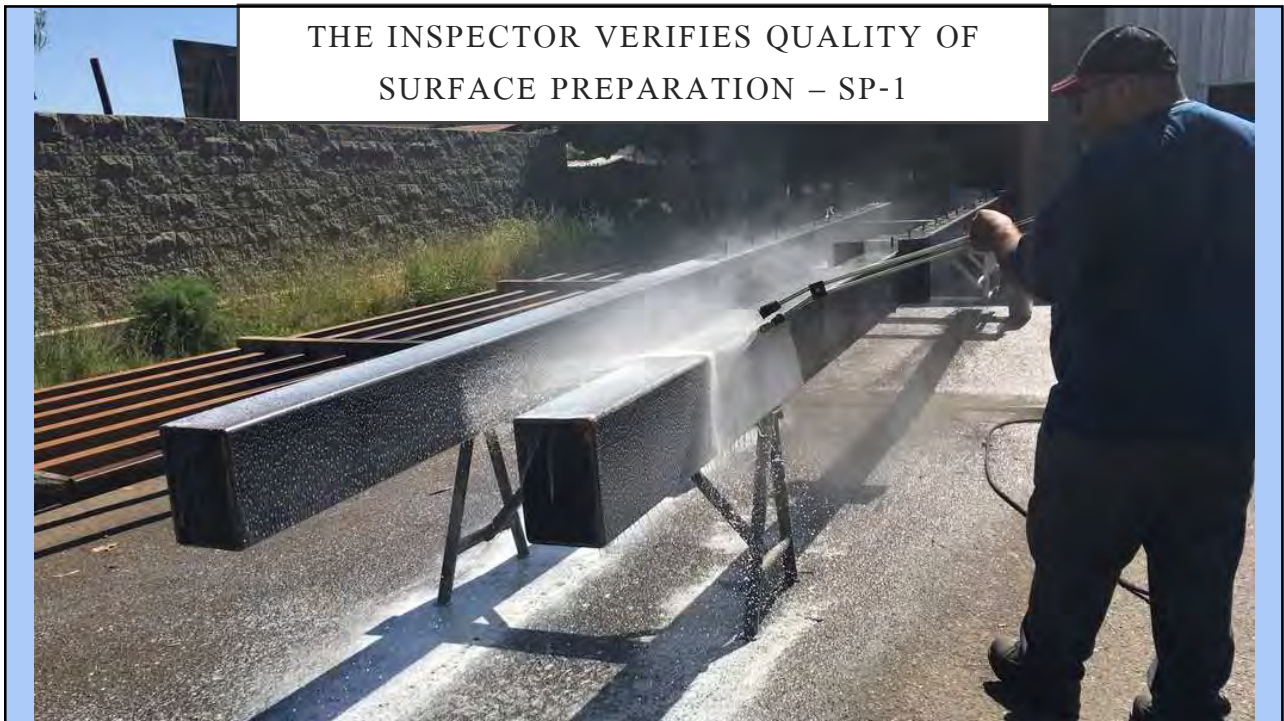




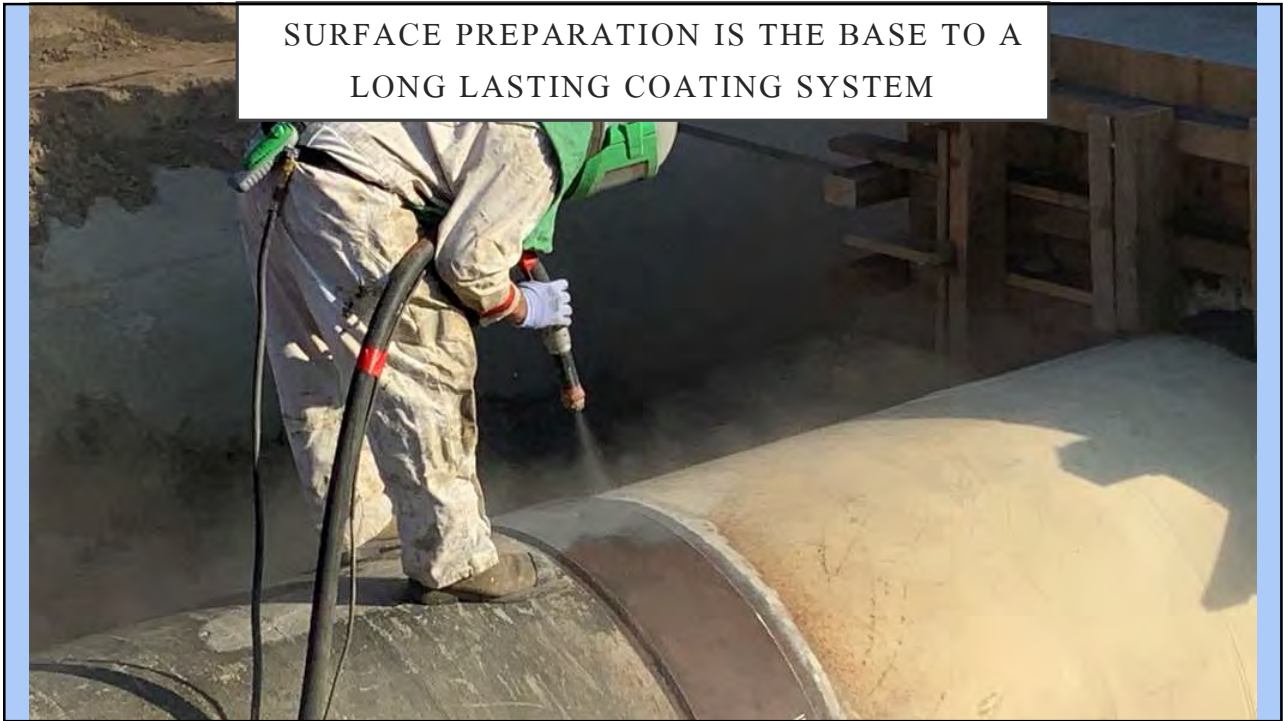
THE INSPECTOR VERIFIES QUALITY OF  
PRE-SURFACE PREPARATION



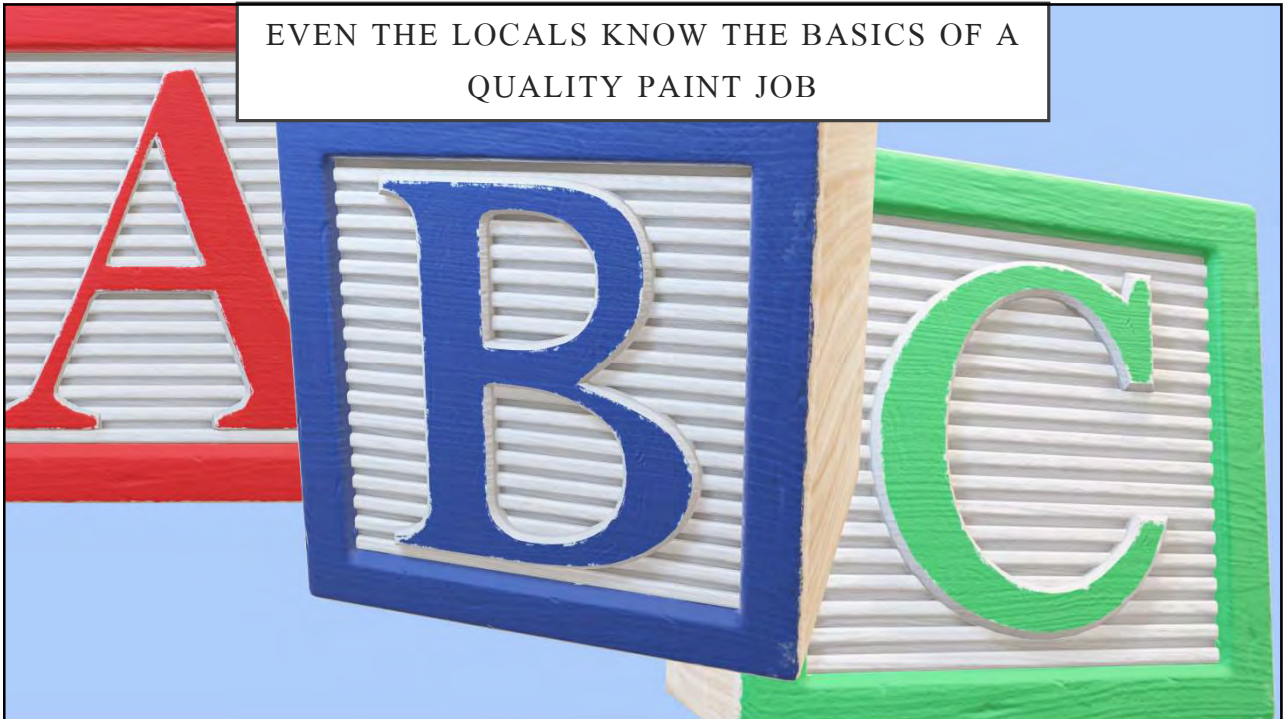
THE INSPECTOR VERIFIES QUALITY OF  
SURFACE PREPARATION – SP-1



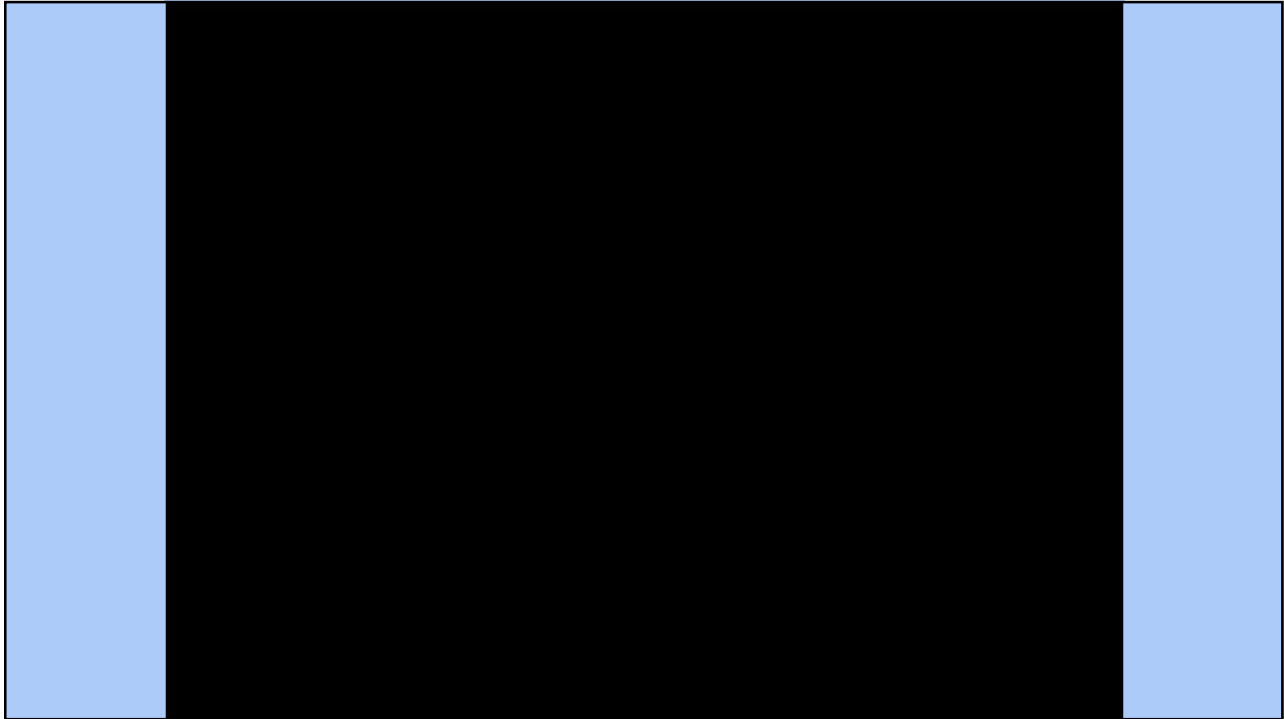
SURFACE PREPARATION IS THE BASE TO A  
LONG LASTING COATING SYSTEM



EVEN THE LOCALS KNOW THE BASICS OF A  
QUALITY PAINT JOB





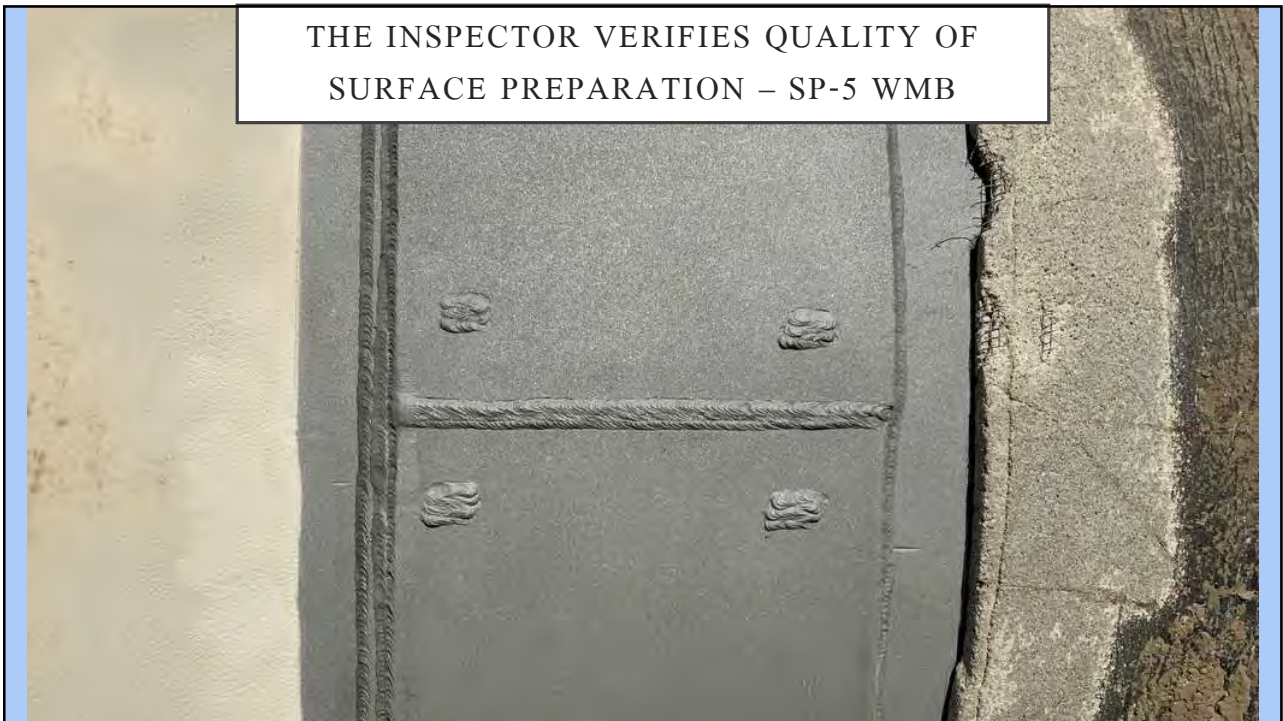




THE INSPECTOR VERIFIES QUALITY OF  
SURFACE PREPARATION – FLASH RUST



THE INSPECTOR VERIFIES QUALITY OF  
SURFACE PREPARATION – SP-5 WMB

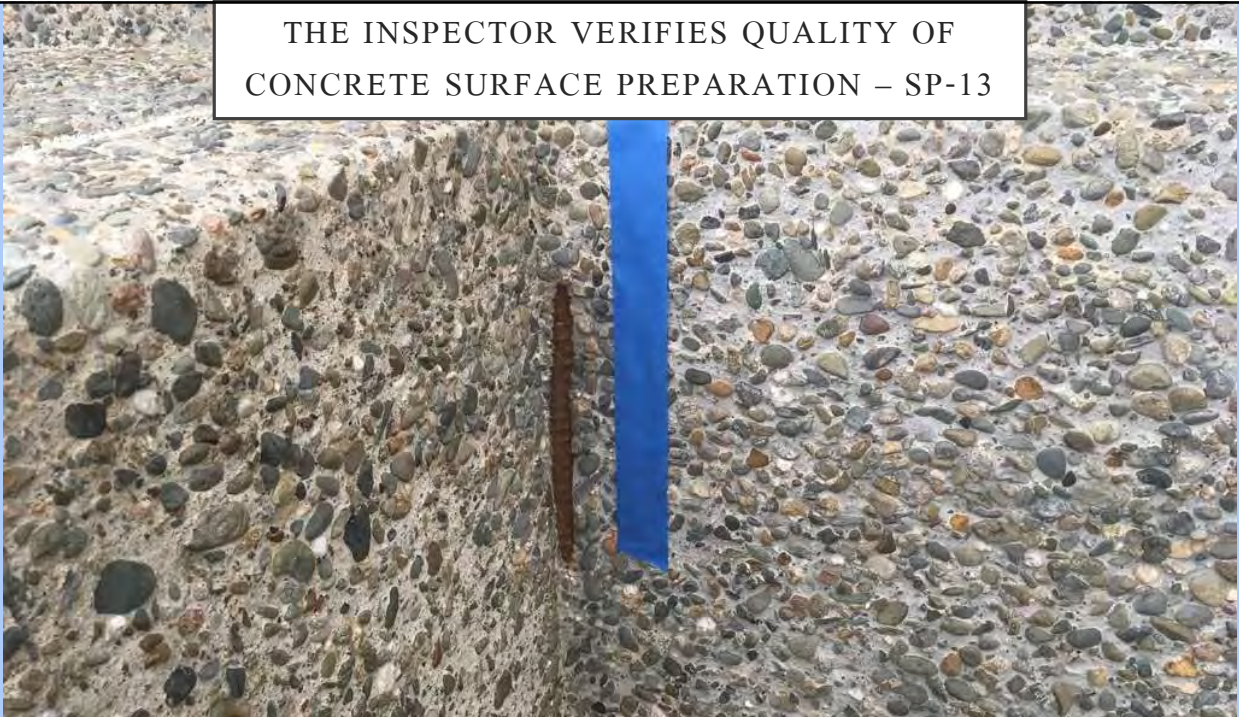




THE INSPECTOR VERIFIES QUALITY OF  
SURFACE PREPARATION- UHP WJ-4 STEEL



THE INSPECTOR VERIFIES QUALITY OF  
CONCRETE SURFACE PREPARATION – SP-13



THE INSPECTOR VERIFIES QUALITY OF  
SURFACE PREPARATION – SP-11



THE INSPECTOR VERIFIES QUALITY OF  
SURFACE PREPARATION – SP-3 POWER TOOL





THE INSPECTOR VERIFIES QUALITY OF SURFACE  
PREPARATION – UHP WJ 40K CONCRETE



THE INSPECTOR VERIFIES QUALITY OF  
SURFACE PREPARATION – SP-3 POWER TOOL



THE INSPECTOR VERIFIES QUALITY OF  
SURFACE PREPARATION – SP-3 POWER TOOL



THE INSPECTOR VERIFIES QUALITY OF  
SURFACE PREPARATION – SP-3 POWER TOOL





THE INSPECTOR VERIFIES QUALITY OF  
SURFACE PREPARATION – SP-2 HAND TOOL



THE INSPECTOR VERIFIES QUALITY OF SURFACE  
PREPARATION – VISUAL INSEPECTION



THE INSPECTOR VERIFIES QUALITY OF SURFACE  
PREPARATION – SP-1 SOLVENT CLEANING



THE INSPECTOR VERIFIES LEVEL OF  
SURFACE CONTAMINANTS - DUST





THE INSPECTOR VERIFIES LEVEL OF  
SURFACE CONTAMINANTS - CHLORIDES

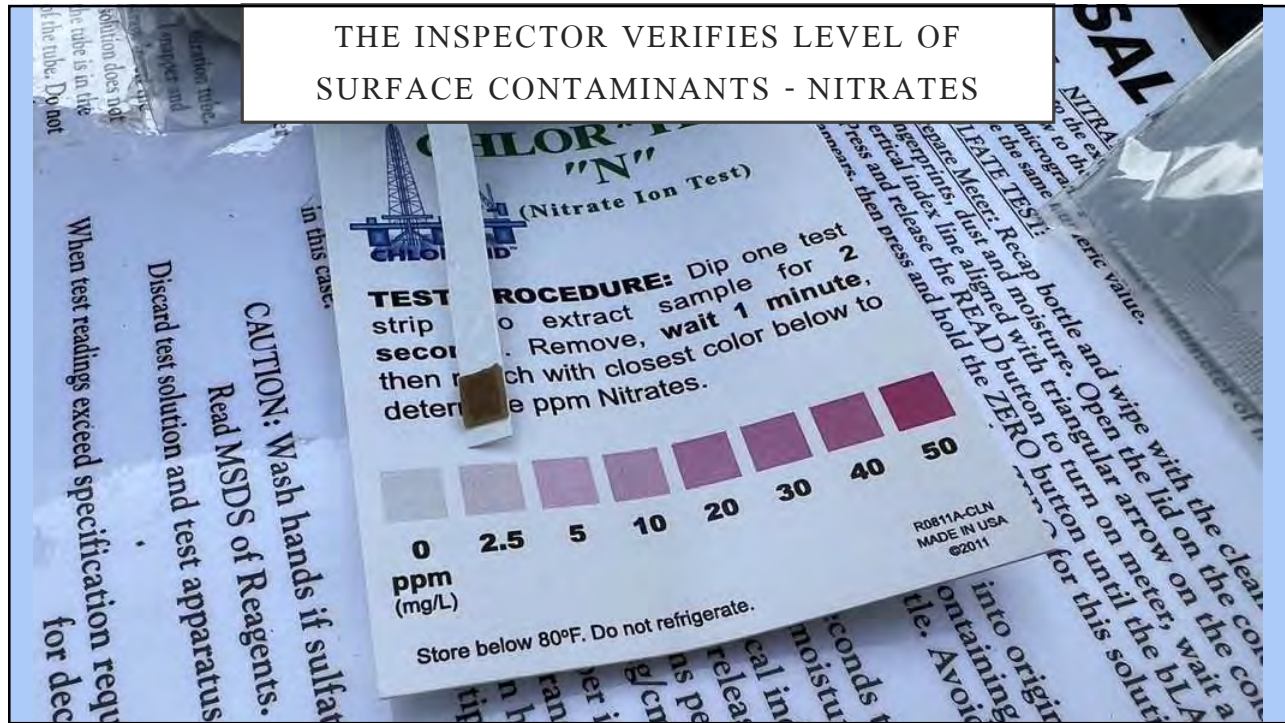


THE INSPECTOR VERIFIES LEVEL OF  
SURFACE CONTAMINANTS - CHLORIDES





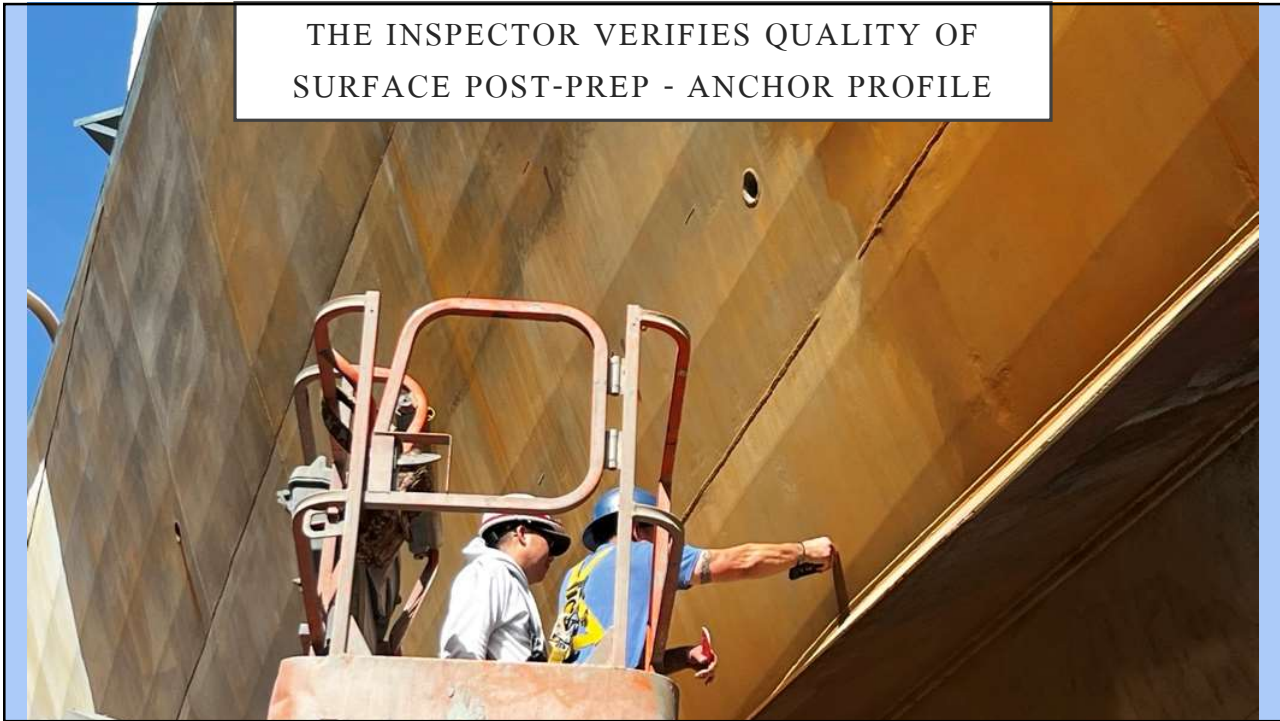
THE INSPECTOR VERIFIES LEVEL OF  
SURFACE CONTAMINANTS - NITRATES



THE INSPECTOR VERIFIES LEVEL OF  
SURFACE CONTAMINANTS - SULFATES



THE INSPECTOR VERIFIES QUALITY OF  
SURFACE POST-PREP - ANCHOR PROFILE



THE INSPECTOR VERIFIES QUALITY OF  
SURFACE POST-PREP - ANCHOR PROFILE





THE INSPECTOR VERIFIES QUALITY OF  
SURFACE POST-PREP - ANCHOR PROFILE



THE INSPECTOR VERIFIES QUALITY OF  
AMBIENT WEATHER CONDITIONS



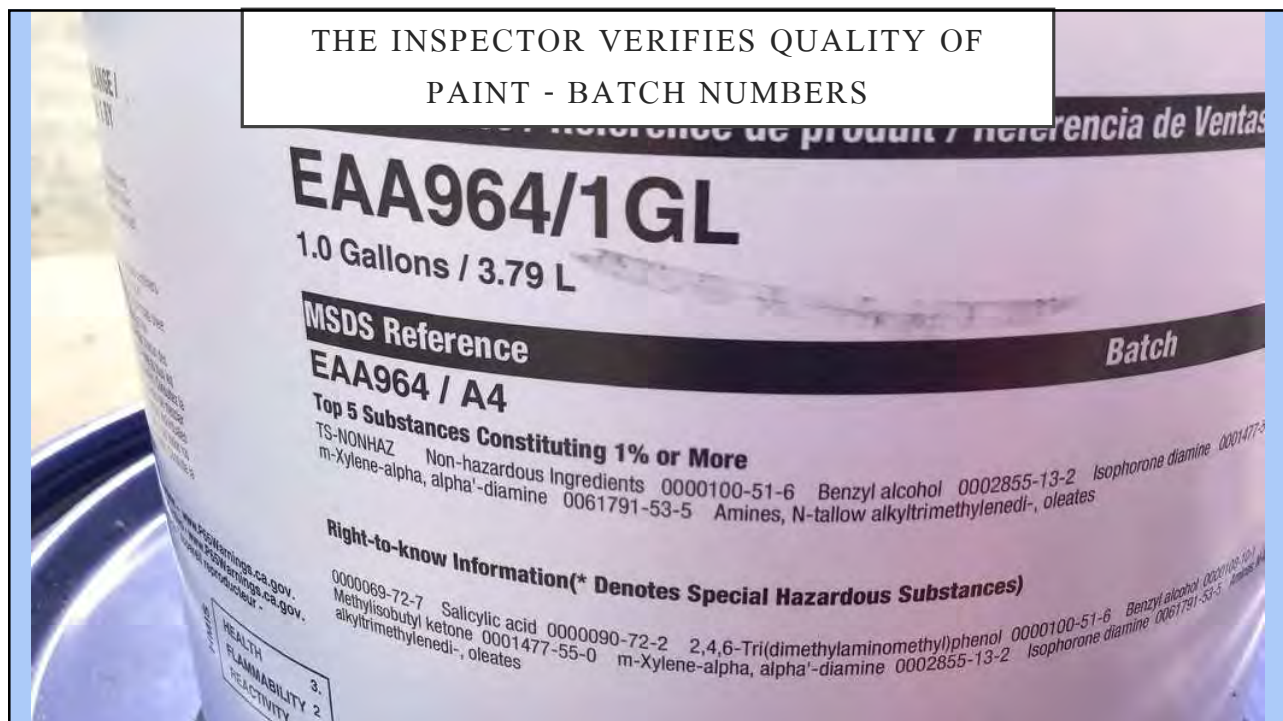
THE INSPECTOR VERIFIES QUALITY OF  
AMBIENT WEATHER CONDITIONS

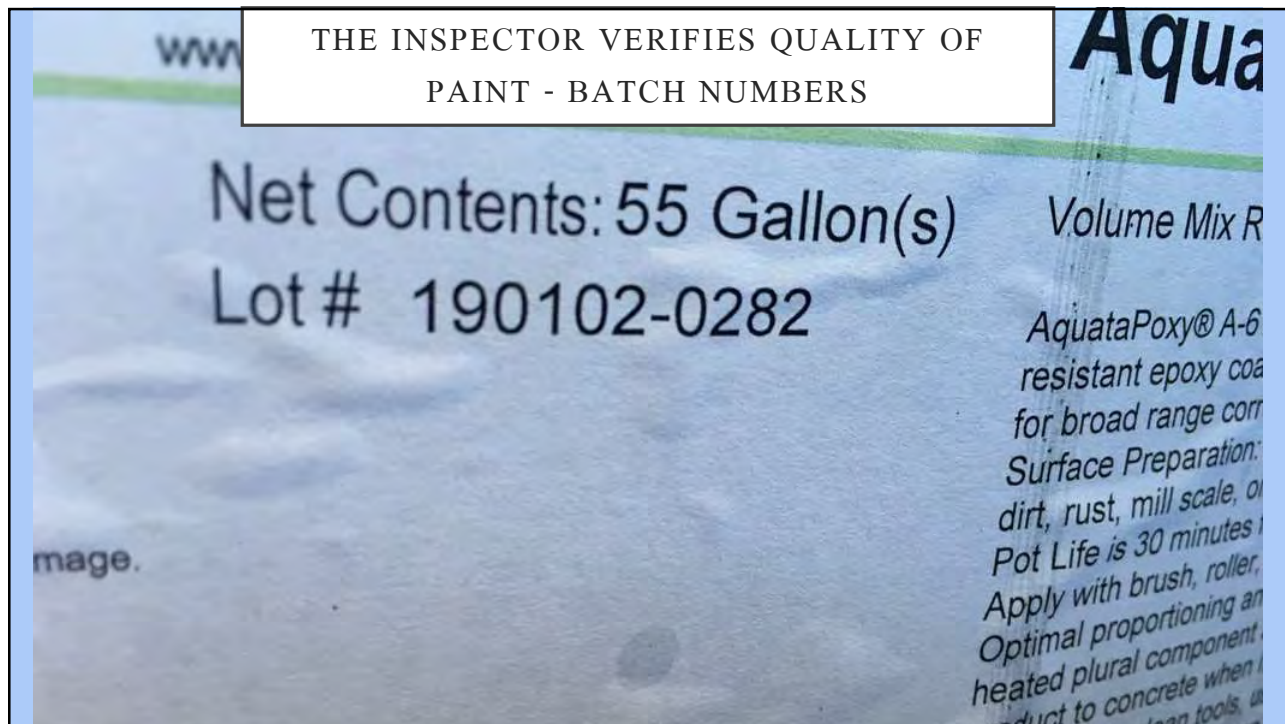


THE INSPECTOR VERIFIES QUALITY OF  
SURFACE TEMPERATURES











THE INSPECTOR VERIFIES QUALITY OF  
PAINT - BATCH NUMBERS



THE INSPECTOR VERIFIES QUALITY OF  
PAINT - BATCH NUMBERS





THE INSPECTOR VERIFIES QUALITY OF  
PAINT - BATCH NUMBERS

**Batch Date**  
**ME3262A**

2*
1
0

THE INSPECTOR VERIFIES QUALITY OF  
PAINT - BATCH NUMBERS

**Batch Date**  
**ME3262A**  
**WTF!STH1S!**

2*
1
0



THE INSPECTOR VERIFIES QUALITY OF  
PAINT CAN CONDITION



THE INSPECTOR VERIFIES QUALITY OF  
PAINT MIXING - PREMIXING







THE INSPECTOR VERIFIES QUALITY OF  
PAINT MIXING – STRAIN PAINT



THE INSPECTOR VERIFIES QUALITY OF  
PAINT APPLICATION - SPRAY





THE INSPECTOR VERIFIES QUALITY OF  
PAINT APPLICATION - ROLLER



THE INSPECTOR VERIFIES QUALITY OF  
PAINT APPLICATION - BRUSH



THE INSPECTOR VERIFIES QUALITY OF  
PAINT THICKNESS - WFT



THE INSPECTOR VERIFIES QUALITY OF  
PAINT THICKNESS - WFT





THE INSPECTOR VERIFIES QUALITY OF  
INSPECTION GAGES - CALIBRATION



THE INSPECTOR VERIFIES QUALITY OF  
PAINT THICKNESS -DFT



THE INSPECTOR VERIFIES QUALITY OF  
PAINT THICKNESS - DFT



THE INSPECTOR VERIFIES QUALITY OF  
COATING COVERAGE – VISUAL INSPECTION





THE INSPECTOR VERIFIES QUALITY OF  
COATING COVERAGE – HOLIDAY TESTING



THE INSPECTOR VERIFIES QUALITY OF  
COATING COVERAGE – HOLIDAY TESTING



THE INSPECTOR VERIFIES QUALITY OF  
COATING COVERAGE – HOLIDAY TESTING



THE INSPECTOR VERIFIES QUALITY OF  
COATING COVERAGE – HOLIDAY TESTING

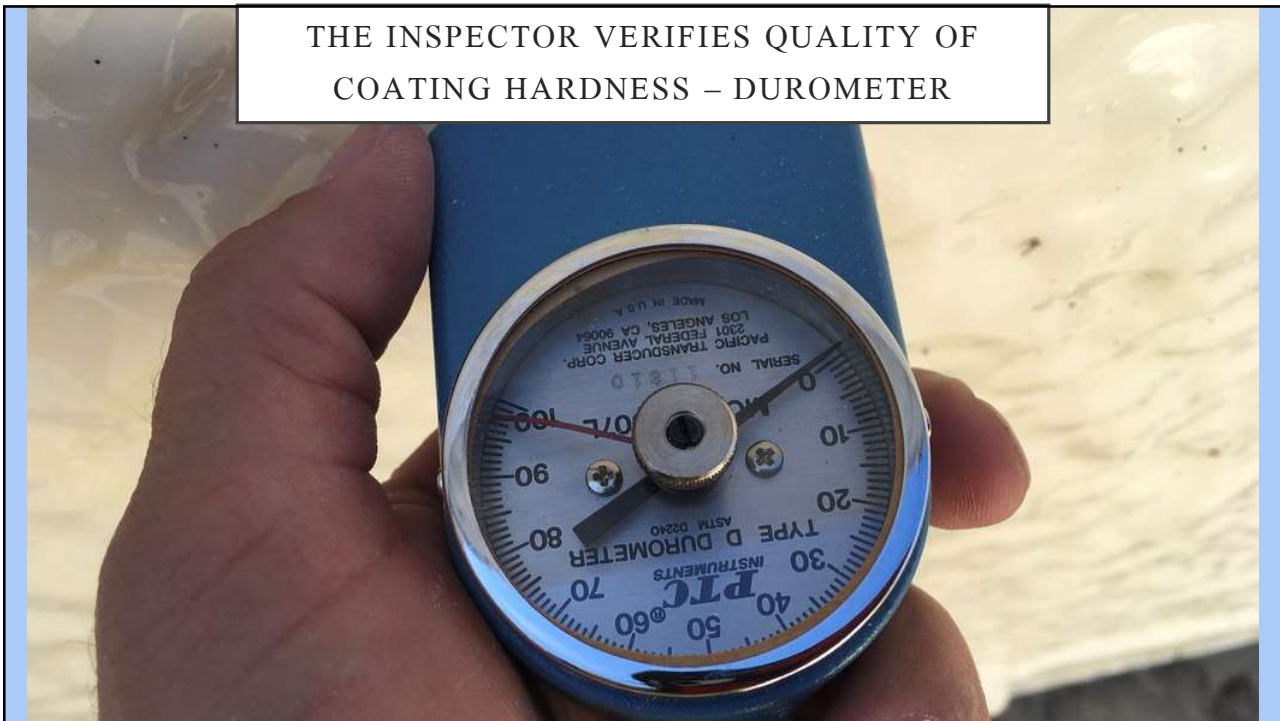




THE INSPECTOR VERIFIES QUALITY OF  
COATING COVERAGE – HOLIDAY TESTING



THE INSPECTOR VERIFIES QUALITY OF  
COATING HARDNESS – DUROMETER



THE INSPECTOR VERIFIES QUALITY OF COATING  
& PREP INTEGRITY – ADHESION TESTING



THE INSPECTOR VERIFIES QUALITY OF COATING  
& PREP INTEGRITY – ADHESION TESTING





THE INSPECTOR VERIFIES QUALITY OF COATING  
& PREP INTEGRITY – ADHESION TESTING



THE INSPECTOR VERIFIES QUALITY OF COATING  
& PREP INTEGRITY – ADHESION TESTING







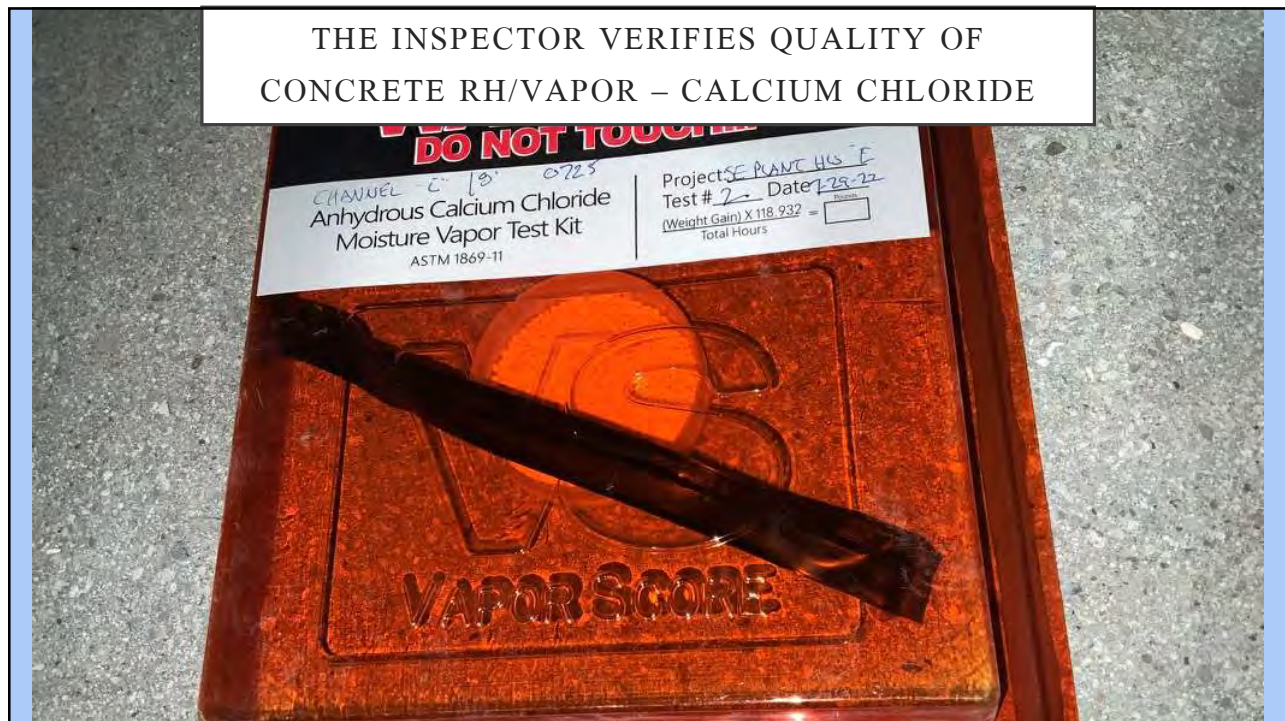




THE INSPECTOR VERIFIES QUALITY OF  
CONCRETE MOISTURE TESTING



THE INSPECTOR VERIFIES QUALITY OF  
CONCRETE RH/VAPOR – CALCIUM CHLORIDE





## THE INSPECTOR VERIFIES QUALITY OF CONCRETE RH – RELATIVE HUMIDITY



## THE INSPECTOR VERIFIES QUALITY BY DOCUMENTATION OF EVERYTHING

11:05 Tue Oct 10  
Done

**DAILY INSPECTION REPORT**  
REPORT # 202309 - NV5-20230804-39, APPROVED  
SURGE TANK COATING PROJECT, MADERA, CALIFORNIA

**GENERAL**

Report Date: 08/04/2023, PDT

Description of Items and/or Areas of Work: Job #3669  
Surge Tank -Contractor Performs NACE SP0188  
(Discontinuity, holiday testing of new protective coatings on  
conductive substrate) onto Entire Interior Surge Tank.

Photo Description: Contractor Performs NACE SP0188 (Discontinuity, holiday testing of new protective coatings on  
conductive substrate) onto Entire Interior Surge Tank.

**CONTRACT REQUIREMENTS / APPLICABLE STANDARDS SPECIFIED**

Job Specifications Only: N/A	SSPC: N/A
Specified Surface Profile: N/A	NACE: Yes: NACE SP0188
Average Surface Profile: N/A	ASTM: Yes: D 7091 Nondestructive Measurement of Dry Film Thickness of Nonmagnetic Coatings Applied to Ferrous Metals and Nonmagnetic, Nonconductive coatings Applied to Non-Ferrous Metals
Profile Accomplished By: N/A	ISO: N/A
Specified Coating Thickness Range Required:	AIWWA: Yes
	Other: N/A

**OBSERVED DEFECTS**

THE INSPECTOR VERIFIES QUALITY BY  
DOCUMENTATION OF EVERYTHING

11:05 Tue Oct 10

Done



**Photo Description:** Holiday Present after performing NACE SP0188 (Discontinuity, holiday testing of new protective coatings on conductive substrate) onto Mid Floor section located Interior Surge Tank.



**Photo Description:** Holiday Present after performing NACE SP0188 (Discontinuity, holiday testing of new protective coatings on conductive substrate) onto Southeast Lower Mid section located Interior Surge Tank.

58%

Search Document



**Photo Description:** Holiday Present after performing NACE SP0188 (Discontinuity, holiday testing of new protective coatings on conductive substrate) onto Southeast Lower Mid section located Interior Surge Tank.



**Photo Description:** Holiday Present after performing NACE SP0188 (Discontinuity, holiday testing of new protective coatings on conductive substrate) onto Southeast Lower Mid section located Interior Surge Tank.

THE INSPECTOR VERIFIES QUALITY BY  
DOCUMENTATION OF EVERYTHING

11:06 Tue Oct 10

Done



**Photo Description:** Holiday Present after performing NACE SP0188 (Discontinuity, holiday testing of new protective coatings on conductive substrate) onto Northeast Lower Mid section located Interior Surge Tank.



**Photo Description:** Holiday Present after performing NACE SP0188 (Discontinuity, holiday testing of new protective coatings on conductive substrate) onto Northeast Lower Mid section located Interior Surge Tank.

ENVIRONMENTAL CONDITIONS

**READING 1**

**Description:** Interior Surge Tank      **Date / Time:** 08/04/2023, 06:29 PDT

**Air Temp:** 60.26°F      **Wet Bulb Temp:** 55.99°F      **Relative Humidity:** 81.1%      **Dew Point:** 54.5°F

58%

Search Document

**Description:** Interior Surge Tank      **Date / Time:** 08/04/2023, 07:56 PDT

**Air Temp:** 69.08°F      **Wet Bulb Temp:** 61.66°F      **Relative Humidity:** 68.8%      **Dew Point:** 58.3°F

**Surface Temp:** 67.10°F      **Delta:** 8.8°F      **Wind Direction:** N/A      **Wind Speed:** N/A

**READING 3**

**Description:** Interior Surge Tank      **Date / Time:** 08/04/2023, 09:05 PDT

**Air Temp:** 75.56°F      **Wet Bulb Temp:** 64.88°F      **Relative Humidity:** 55.8%      **Dew Point:** 58.6°F

**Surface Temp:** 75.02°F      **Delta:** 16.4°F      **Wind Direction:** N/A      **Wind Speed:** N/A

**READING 4**

**Description:** Interior Surge Tank      **Date / Time:** 08/04/2023, 13:16 PDT

**Air Temp:** 90.68°F      **Wet Bulb Temp:** 71.53°F      **Relative Humidity:** 39.9%      **Dew Point:** 60.8°F

**Surface Temp:** 90.14°F      **Delta:** 29.3°F      **Wind Direction:** N/A      **Wind Speed:** N/A



**Photo Description:** Weather conditions device located Interior Surge Tank.



47

11:06 Tue Oct 10

Done

## THE INSPECTOR VERIFIES QUALITY BY DOCUMENTATION OF EVERYTHING

57%

Search Document

Total 4689.1 15.18



**Photo Description:** BCTS Inspector performs ASTM D 7091 (nondestructive measurement of dry film thickness) onto West End section located Interior Surge tank.



**Photo Description:** BCTS Inspector performs ASTM D 7091 (nondestructive measurement of dry film thickness) onto Northwest Lower Mid section located Interior Surge tank.



**Photo Description:** BCTS Inspector performs ASTM D 7091 (nondestructive measurement of dry film thickness) onto East End section located Interior Surge tank.



**Photo Description:** Mid BCTS Inspector performs ASTM D 7091 (nondestructive measurement of dry film thickness) onto South Mid section located Interior Surge tank.

11:06 Tue Oct 10

Done

## THE INSPECTOR VERIFIES QUALITY BY DOCUMENTATION OF EVERYTHING

57%

Search Document



**Photo Description:** Contractor uses Tinker & Razor model M/I low voltage holiday tester serial # 26437 to perform NACE SP0188 (Discontinuity, holiday testing of new protective coatings on conductive substrate).



**Photo Description:** Contractor Performs NACE SP0188 (Discontinuity, holiday testing of new protective coatings on conductive substrate) onto Southeast Lower Mid section located Interior Surge Tank.



**Photo Description:** Contractor Performs NACE SP0188 (Discontinuity, holiday testing of new protective coatings on conductive substrate) onto West Floor section located Interior Surge Tank.



**Photo Description:** Contractor Performs NACE SP0188 (Discontinuity, holiday testing of new protective coatings on conductive substrate) onto East End section located Interior Surge Tank.



**THE INSPECTOR VERIFIES QUALITY BY  
DOCUMENTATION OF EVERYTHING**

11:07 Tue Oct 10  
Done



**Photo Description:** Contractor Performs NACE SP0188 (Discontinuity, holiday testing of new protective coatings on conductive substrate) onto North Mid section located Interior Surge Tank.



**Photo Description:** Contractor Performs NACE SP0188 (Discontinuity, holiday testing of new protective coatings on conductive substrate) onto Northwest Lower Mid section located Interior Surge Tank.

Search Document



**Photo Description:** Contractor Performs NACE SP0188 (Discontinuity, holiday testing of new protective coatings on conductive substrate) onto Mid Floor section located Interior Surge Tank.

INSPECTOR REMARKS AND SIGNATURES

**Remarks:** Contractor (Crown Painting) Performs NACE SP0188 (Discontinuity, holiday testing of new protective coatings on conductive substrate) onto Ensis Interior Surge Tank. BCTS inspector performs ASTM D 7091 (nondestructive measurement of dry film thickness) onto West/East End, Northwest Lower Mid, South Mid, East Roof, Interior Vent Cap, Interior Hatch Cover sections located Interior Surge tank. All testing processes are performed in accordance with NACE, SSPC and ASTM procedures standards. Work was done in accordance with manufacturer's specifications and workmanship appears visually to be satisfactory with in specifications.

BCTS Inspector Start Time: 5:54am  
Lunch Break: 10:16am thru 10:35am  
End Time: 1:16pm



**Name:** Tracey O'Sullivan  
**Type:** AMPP-Senior Certified  
**Certification:** Inspection/NACE Level 3 #12128  
**Date:** 10/18/2023, 08:18 PDT

## I ASKED CHAT GPT LIST A FEW BENEFITS OF HAVING A QUALITY PAINT INSPECTOR

- **Quality Assurance:** Ensures that paint coatings meet quality standards.
- **Compliance with Regulations:** Ensures compliance with industry, environmental, and safety regulations.
- **Reduced Liability:** Helps minimize the risk of accidents or injuries due to paint-related issues.
- **Long-term Durability:** Ensures coatings are applied correctly for long-lasting performance.
- **Aesthetic Appeal:** Guarantees a visually appealing finish, enhancing the overall appearance.
- **Corrosion Prevention:** Protects against rust and corrosion, extending the lifespan of equipment.
- **Chemical Resistance:** Ensures coatings can withstand exposure to various chemicals.
- **Weather Resistance:** Ensures coatings can withstand different weather conditions.
- **Abrasion Resistance:** Verifies coatings can resist wear and tear.
- **Adhesion Testing:** Ensures coatings adhere properly to surfaces.
- **Film Thickness Measurement:** Ensures the correct thickness of coatings for optimal performance.
- **Holiday Detection:** Identifies pinholes or holidays in coatings to prevent corrosion.
- **Surface Preparation Verification:** Ensures surfaces are adequately prepared for coating application.

## JUST A FEW BENEFITS OF HAVING A QUALITY INSPECTOR

- **Documentation and Reporting:** Provides detailed records for future reference or audits.
- **Inspection of Substrate:** Checks the condition of the underlying material before coating.
- **Non-Destructive Testing (NDT):** Utilizes methods like ultrasonic testing, radiography, etc., to assess coatings without causing damage.
- **Destructive Testing (DT):** Conducts tests that involve removing or damaging samples to evaluate coating performance.
- **Adherence to Standards:** Ensures compliance with industry standards like SSPC, NACE, ASTM,
- **Risk Mitigation:** Identifies potential issues before they become major problems.
- **Health and Safety Compliance:** Ensures that the coatings and their application are safe for workers and the environment.
- **Training and Certification Oversight:** Ensures that personnel working with coatings are adequately trained and certified.
- **Expertise in Coating Systems:** Familiarity with various types of coatings and their applications.
- **Prevents Overspray:** Minimizes waste by ensuring coatings are applied precisely where needed.
- **Regulation of Paint Mixtures:** Ensures correct ratios and mixing procedures for coatings.
- **Resolves Application Defects:** Identifies and rectifies issues like runs, sags, or orange peel.

## JUST A FEW BENEFITS OF HAVING A QUALITY INSPECTOR

- **Consultation on Material Selection:** Provides advice on the best coatings for specific applications.
- **Monitoring of Cure Time:** Ensures coatings have sufficient time to cure for optimal performance.
- **Rust Removal and Treatment:** Identifies and addresses existing rust before applying coatings.
- **Verification of Surface Cleanliness:** Ensures surfaces are free of contaminants before coating.
- **Documentation of Surface Conditions:** Records pre-existing conditions for reference.
- **Prevents Oversights:** Catches potential problems that might be missed by untrained eyes.
- **Enhances Productivity:** Keeps projects on schedule by minimizing rework or delays.
- **Customer Satisfaction:** Ensures the final product meets or exceeds customer expectations.
- **Reduces Wastage:** Minimizes material waste by ensuring correct application techniques.
- **Protects Investment:** Preserves the value and longevity of assets and infrastructure.
- **Evaluates Coating Compatibility:** Ensures different coatings can be applied together without issues.
- **Manages Subcontractors:** Oversees work done by subcontractors to ensure quality.
- **Comprehensive Reporting:** Provides clear, detailed reports on inspection findings.
- **In-Process Monitoring:** Offers real-time feedback during the application process.
- **Reduces Environmental Impact:** Ensures environmentally-friendly coatings are used and applied responsibly.



## JUST A FEW BENEFITS OF HAVING A QUALITY INSPECTOR

- **Prevents Premature Failure:** Identifies potential problems before they lead to coating failure.
- **Minimizes Environmental Contamination:** Prevents spills or leaks of hazardous materials.
- **Facilitates Material Handling:** Advises on proper storage and handling of coating materials.
- **Expertise in Specialty Coatings:** Knowledge of specialized coatings for unique applications.
- **Saves Time on Remediation:** Prevents the need for extensive rework or repairs.
- **Facilitates Proper Ventilation:** Ensures adequate ventilation during coating application to protect workers.
- **Identifies Coating Compatibility Issues:** Flags potential problems when different coatings are used together.
- **Monitors Surface Temperature:** Ensures coatings are applied within the correct temperature range.
- **Records Environmental Conditions:** Keeps track of conditions during application (humidity, temperature, etc.).
- **Identifies Improper Storage:** Flags issues with how coating materials are stored.
- **Controls Overspray and Fumes:** Ensures safety measures are in place to protect workers and the environment.
- **Manages Coating Waste:** Ensures proper disposal of waste materials.
- **Prevents Contaminant Migration:** Avoids issues caused by contaminants beneath coatings.
- **Knowledge of Coating Failure Modes:** Recognizes signs of potential coating failure.
- **Monitors Equipment Calibration:** Ensures equipment used in coating application is properly calibrated.

## JUST A FEW BENEFITS OF HAVING A QUALITY INSPECTOR

- **Prevents Coating Delamination:** Identifies issues that could lead to coating separation from the substrate.
- **Evaluates Surface Profile:** Checks that the surface has the correct texture for coating adhesion.
- **Monitors Ventilation and Extraction Systems:** Ensures they are working properly during coating application.
- **Expertise in Specialty Applications (e.g., fireproofing, anti-fouling):** Knowledge of coatings for specific requirements.
- **Facilitates Application of Intumescent Coatings:** Ensures these fire-resistant coatings are applied correctly.
- **Manages Coating Inspection Tools:** Ensures they are properly maintained and calibrated.
- **Prevents Oversights in Edge Coverage:** Ensures complete coverage, even in hard-to-reach areas.
- **Monitors Safety Equipment Usage:** Ensures workers are using protective gear appropriately.
- **Prevents Contamination from Adjacent Surfaces:** Ensures adjacent areas are protected during coating application.
- **Manages Documentation of Material Certifications:** Verifies the authenticity and quality of coating materials.
- **Evaluates Coating Compatibility with Substrates:** Ensures coatings are suitable for specific materials.
- **Facilitates Application of Tank Linings:** Ensures these critical coatings are applied properly.

## JUST A FEW BENEFITS OF HAVING A QUALITY INSPECTOR

- **Manages Application of High-Temperature Coatings:** Ensures they are applied correctly for durability
- **Prevents Blistering and Bubble Formation:** Identifies potential issues during application.
- **Monitors Surface Condition during Application:** Ensures there are no unexpected issues.
- **Controls Surface Contaminants:** Ensures surfaces are free of dust, dirt, or grease.
- **Evaluates Ambient Conditions for Coating Application:** Ensures they are within specified ranges.
- **Facilitates Adherence to Vendor Specifications:** Ensures coatings are applied according to manufacturer guidelines.
- **Manages Coating Cure Time:** Ensures coatings have sufficient time to cure for optimal performance.
- **Prevents Solvent Entrapment:** Identifies potential issues with solvents being trapped in the coating.
- **Monitors Humidity Levels during Application:** Ensures they are within specified ranges.
- **Controls Wet Film Thickness:** Ensures the correct amount of coating is applied.
- **Evaluates Dry Film Thickness:** Verifies coatings have cured to the correct thickness.
- **Facilitates Application of Anti-Skid Coatings:** Ensures safety coatings are applied effectively.
- **Manages Coating Application in Confined Spaces:** Ensures safety measures are followed.
- **Prevents Coating Discoloration:** Identifies potential issues with color consistency.
- **Monitors Coating Adhesion:** Ensures coatings are properly bonded to the substrate.

## JUST A FEW BENEFITS OF HAVING A QUALITY INSPECTOR

- **Manages Coating Application in Elevated Areas:** Ensures proper safety measures are in place.
- **Facilitates Application of Marine Coatings:** Ensures coatings are suitable for marine environments.
- **Prevents Coating Thinning Issues:** Identifies problems with excessive thinning of coatings.
- **Monitors Recoat Window:** Ensures coatings are applied within the specified timeframe for optimal adhesion.
- **Controls Coating Mixing Ratios:** Ensures correct proportions for optimal performance.
- **Evaluates Application of Galvanizing Coatings:** Ensures proper application for corrosion resistance.
- **Manages Application of Thermal Spray Coatings:** Ensures they are applied according to manufacturer guidelines.
- **Prevents Cracking and Crazing:** Identifies potential issues with coating integrity.
- **Monitors Drying Time:** Ensures coatings have sufficient time to dry before further handling.
- **Facilitates Application of Concrete Coatings:** Ensures proper adhesion and coverage.
- **Manages Application of Epoxy Coatings:** Ensures they are applied according to manufacturer guidelines.
- **Prevents Peeling and Flaking:** Identifies potential issues with coating adhesion.
- **Monitors Coating Mixing Procedures:** Ensures correct techniques for consistent application.
- **Controls Surface Temperature during Application:** Ensures it's within specified ranges.
- **Evaluates Application of Elastomeric Coatings:** Ensures proper coverage for flexibility and weather resistance.



JUST A FEW BENEFITS OF HAVING A  
QUALITY INSPECTOR

- **#100**
- **Cost Savings:** Detects issues early, preventing costly rework or repairs.

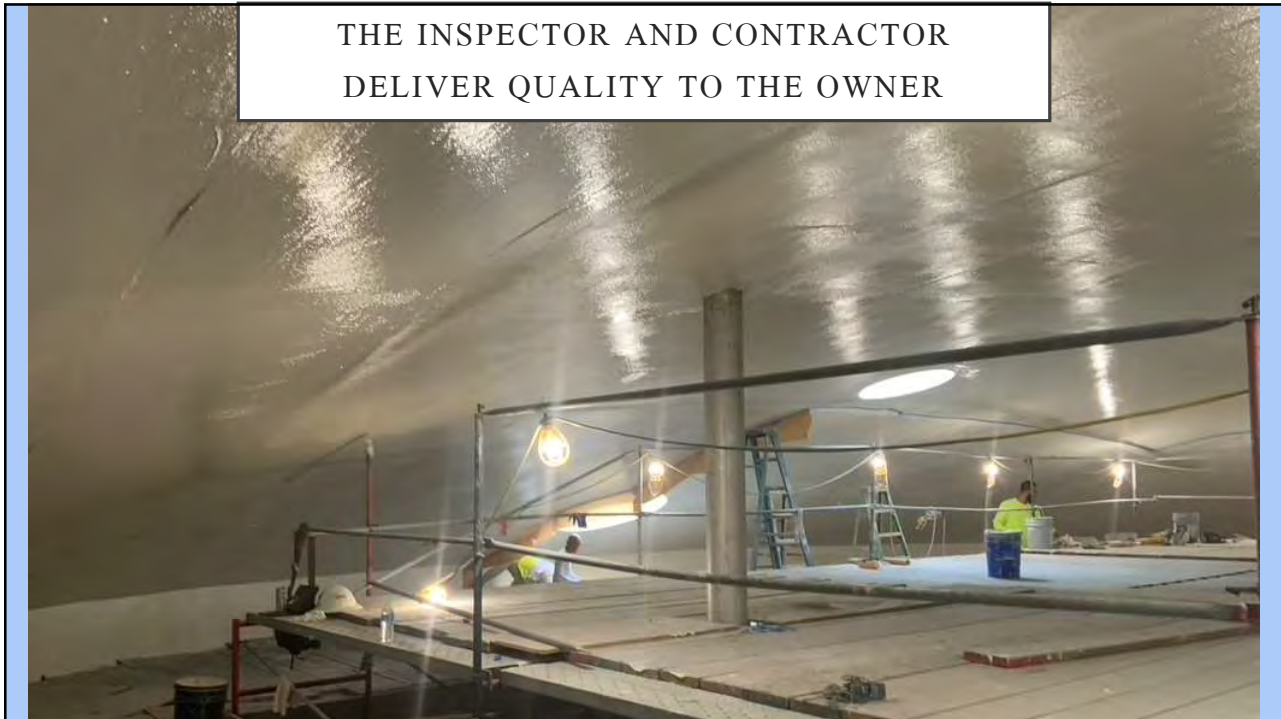
THIS IS THE DIRECT RESULT OF FULLTIME  
QUALITY INSPECTION



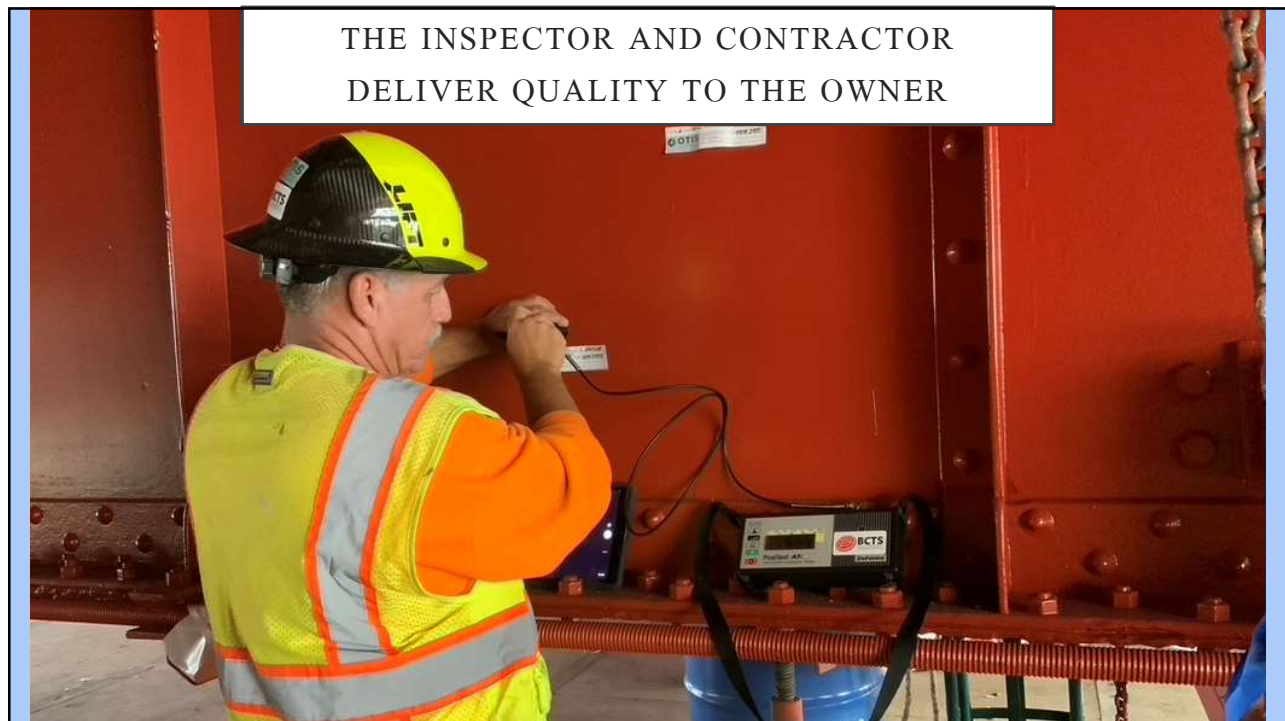
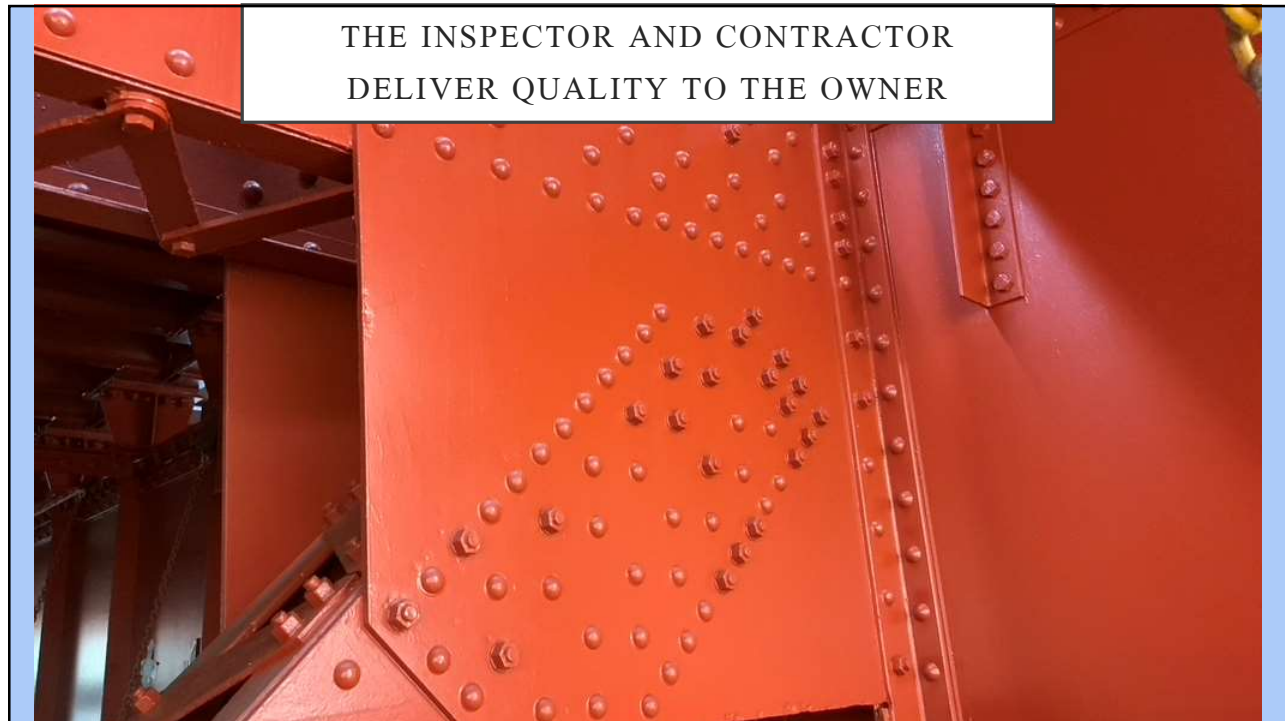
THE INSPECTOR AND CONTRACTOR  
DELIVER QUALITY TO THE OWNER



THE INSPECTOR AND CONTRACTOR  
DELIVER QUALITY TO THE OWNER







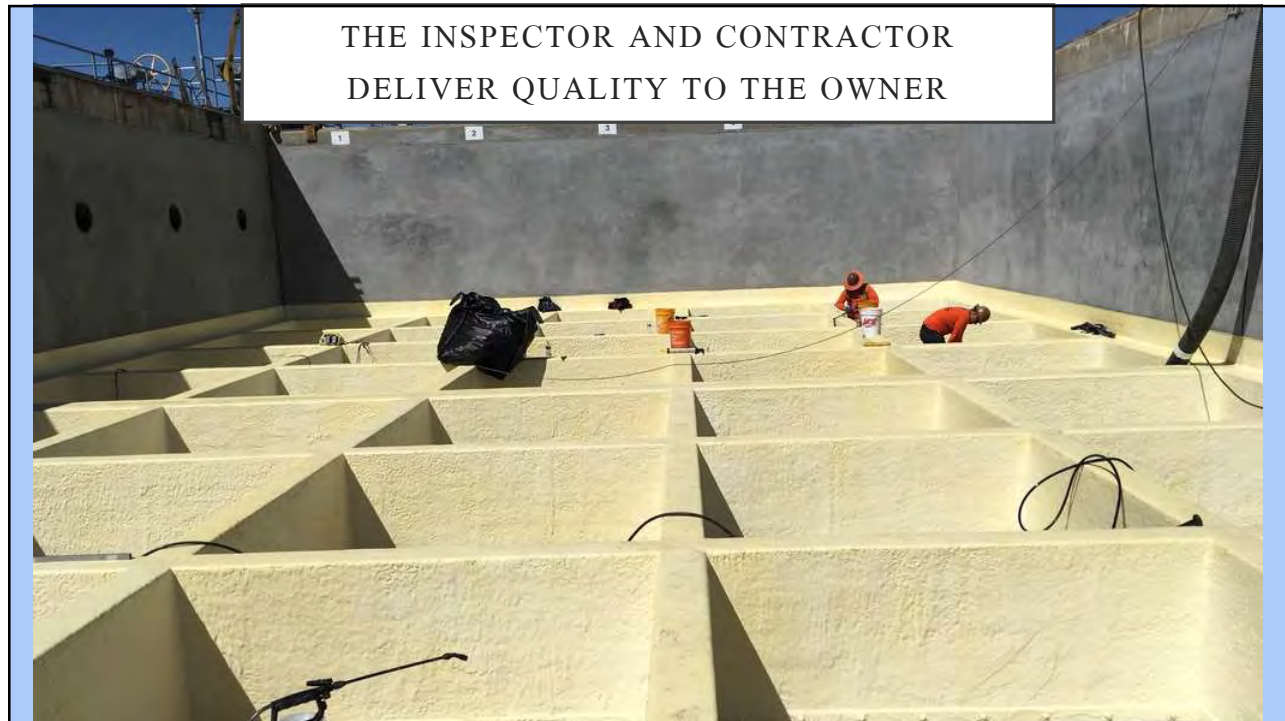
THE INSPECTOR AND CONTRACTOR  
DELIVER QUALITY TO THE OWNER



THE INSPECTOR AND CONTRACTOR  
DELIVER QUALITY TO THE OWNER







THANK YOU!!

