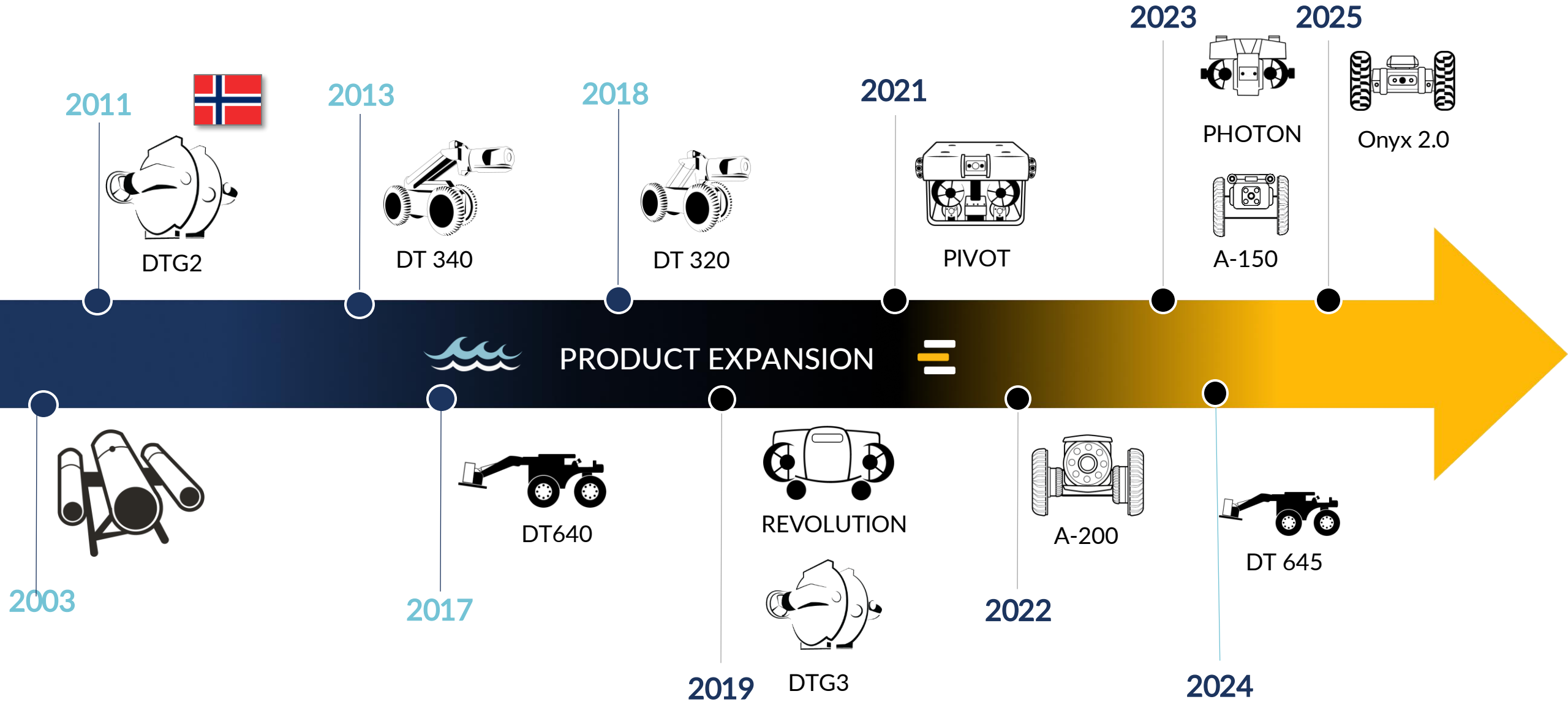


An aerial photograph of a large concrete dam with multiple spillways, situated in a valley. The dam is surrounded by green fields, a small town, and a railway line. The text 'REDUCE THE USE OF DIVERS FOR INSPECTIONS AND CLEANING' is overlaid in large white letters.

REDUCE THE USE OF DIVERS FOR INSPECTIONS AND CLEANING

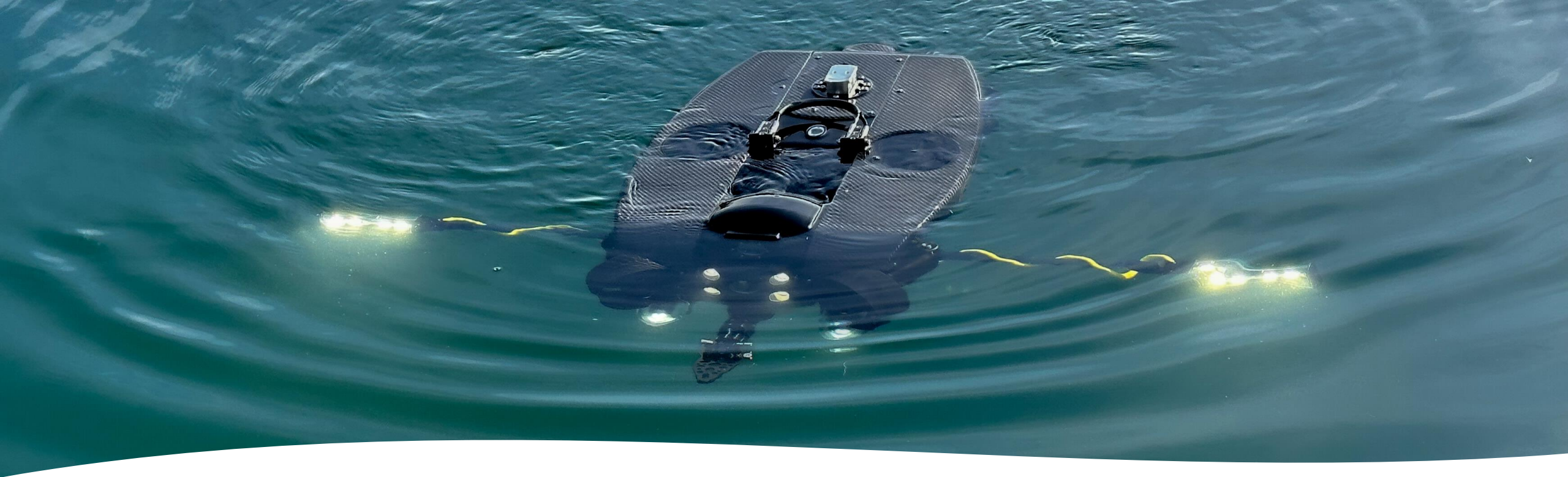
**Remotely operated vehicles for safety, security
and situational awareness**

A BRIEF HISTORY OF INNOVATIVE ROBOTIC SOLUTIONS



Common Problems Solved by DT Robotics

- Visibility
- Turbidity
- Location underwater
- Buoyancy
- Cleaning/maintenance



How do we overcome poor visibility?

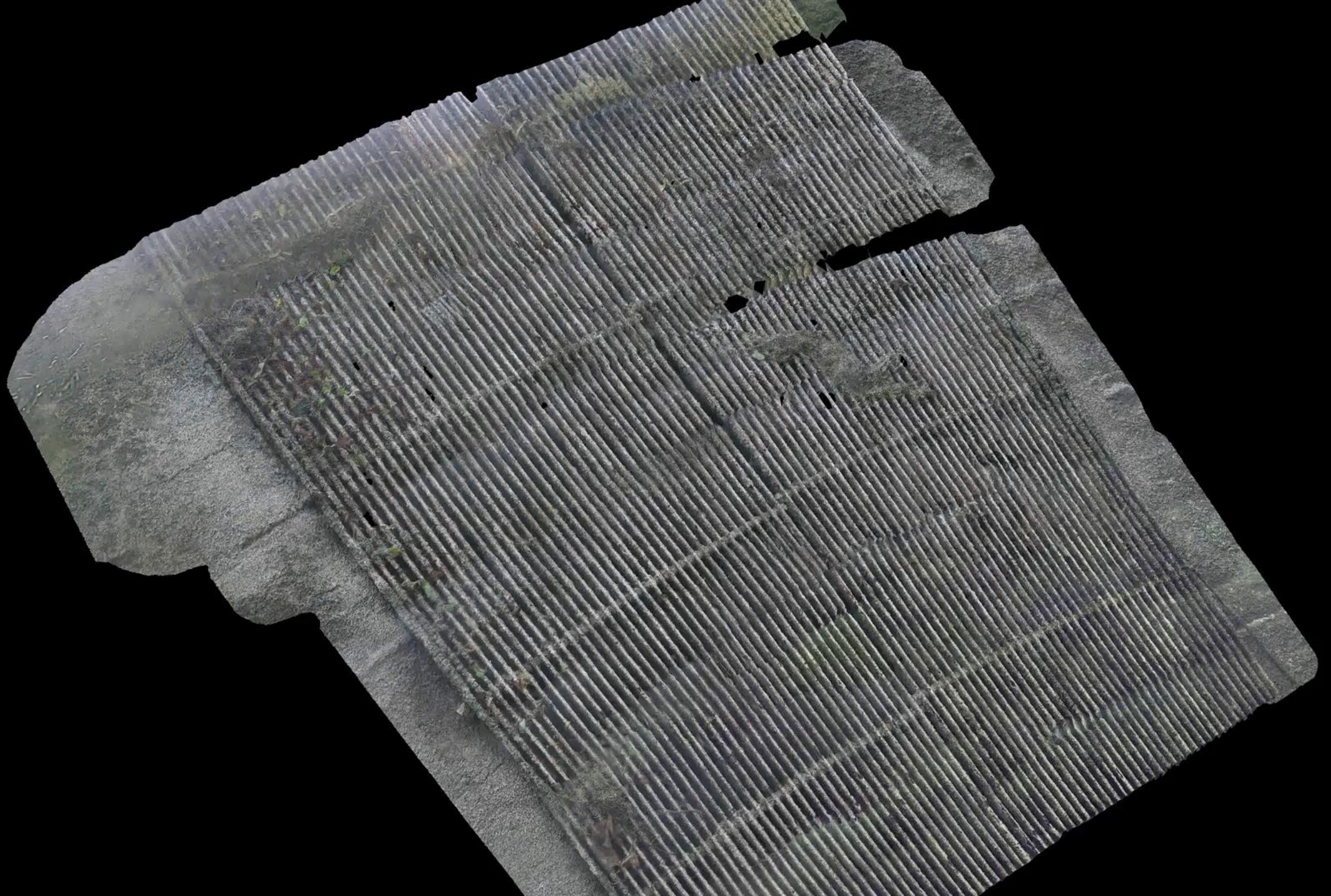
- Enhanced 4K UHD camera
- Fully dimmable enhanced lighting in different configurations
- Up to 25,000 lumens (depending on configuration)

Original



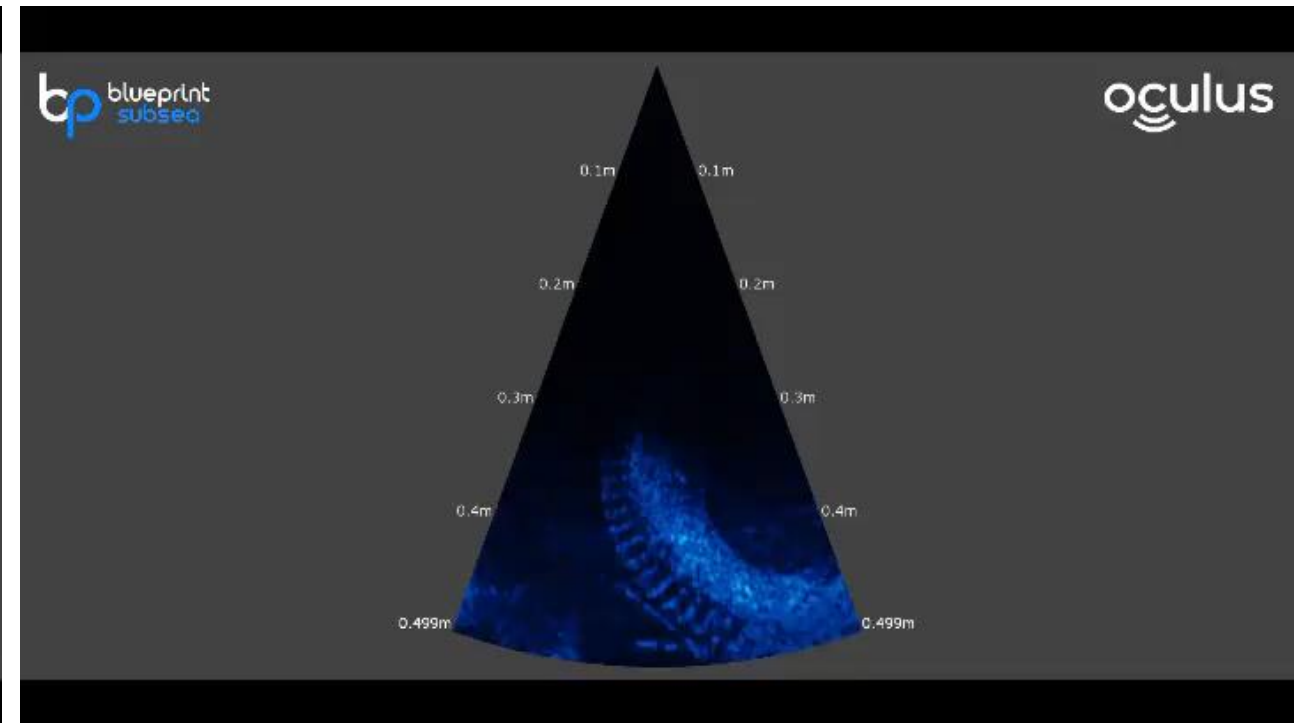
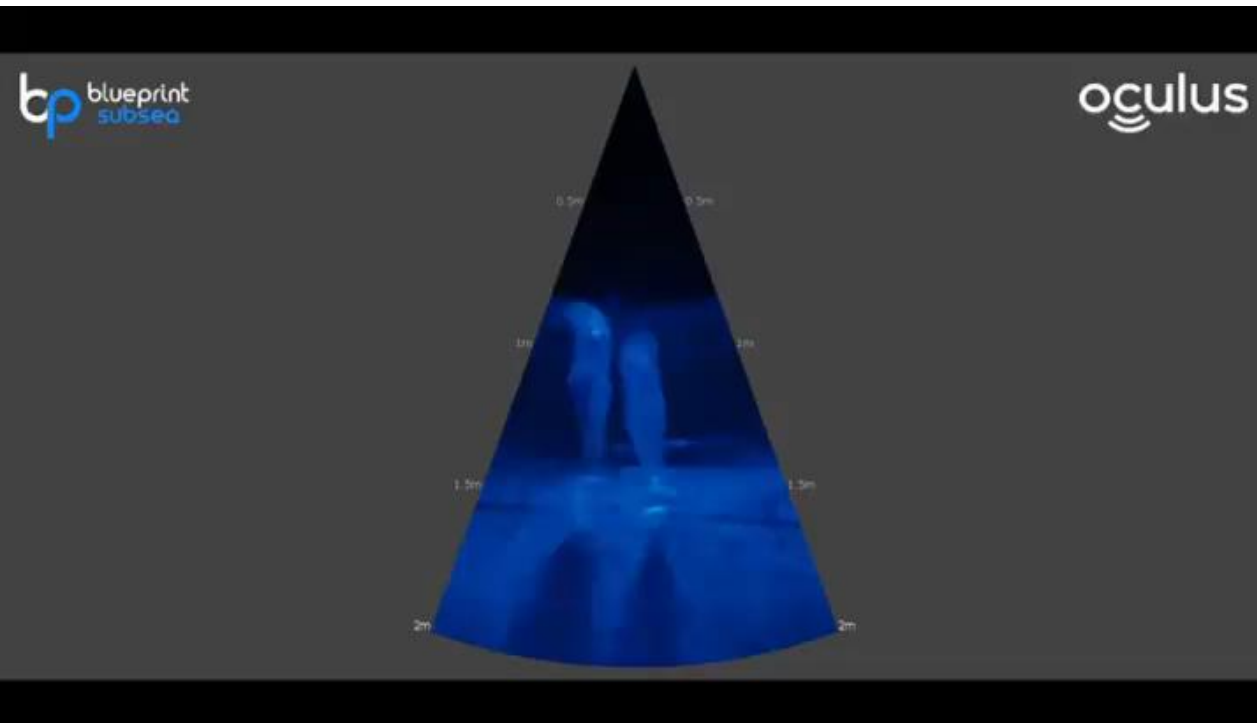
DT Turbidity Filter

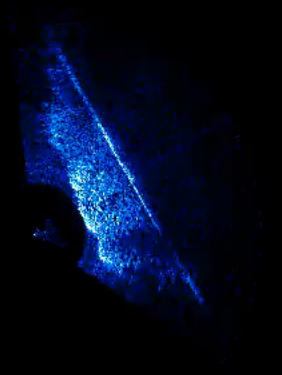


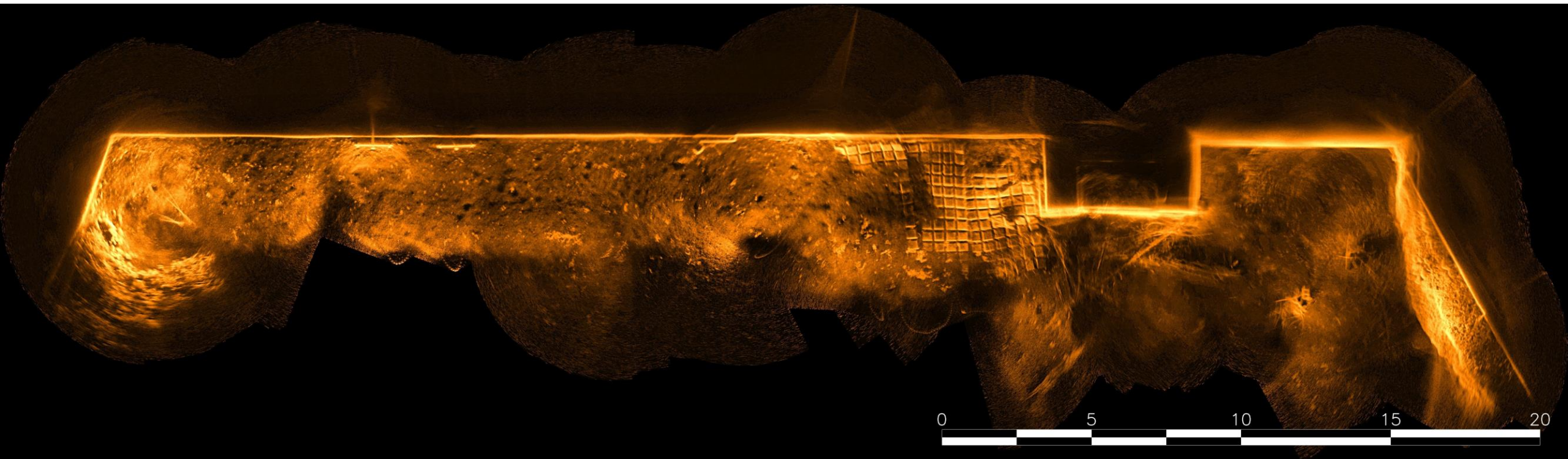


How do we overcome turbidity?

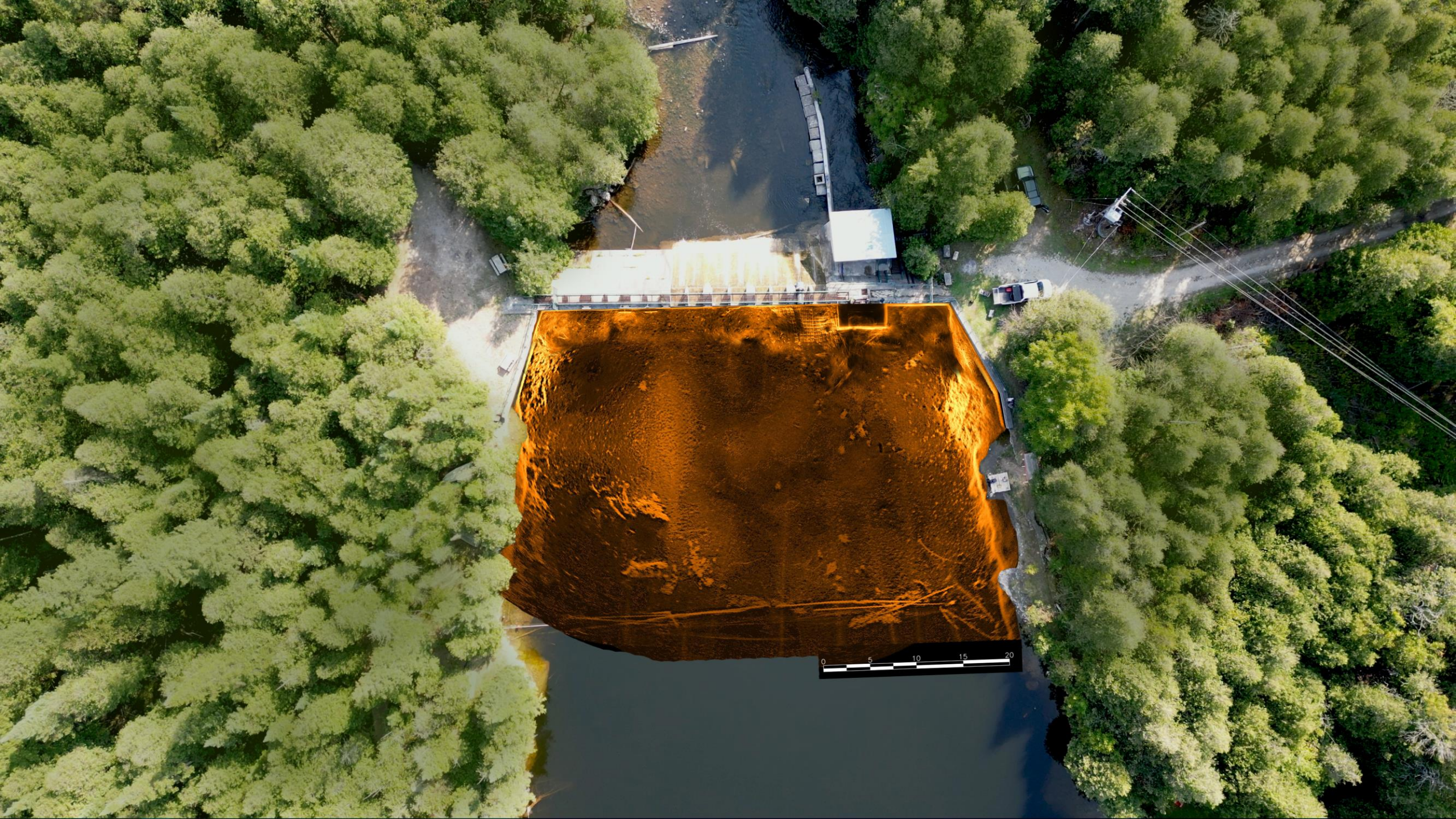
- Dual Frequency Multibeam Imaging Sonars















How do we know where we are?

- New 'Dead Reckoning' technology



REVOLUTION ROV



An unlimited number of options and customizations available, this is the ultimate ROV platform for your toughest projects

Specifications

SPEED

3.7 knots

DEPTH RATING

Up to 305 m (1000 ft)

CAMERA

4K UHD, zoom cam available

CONTROLLER

Various available

POWER

Direct Power/Battery

WIDTH

440 mm (17.3")

HEIGHT

235 mm (9.3")

LENGTH

717 mm (28.2")

WEIGHT

75lb

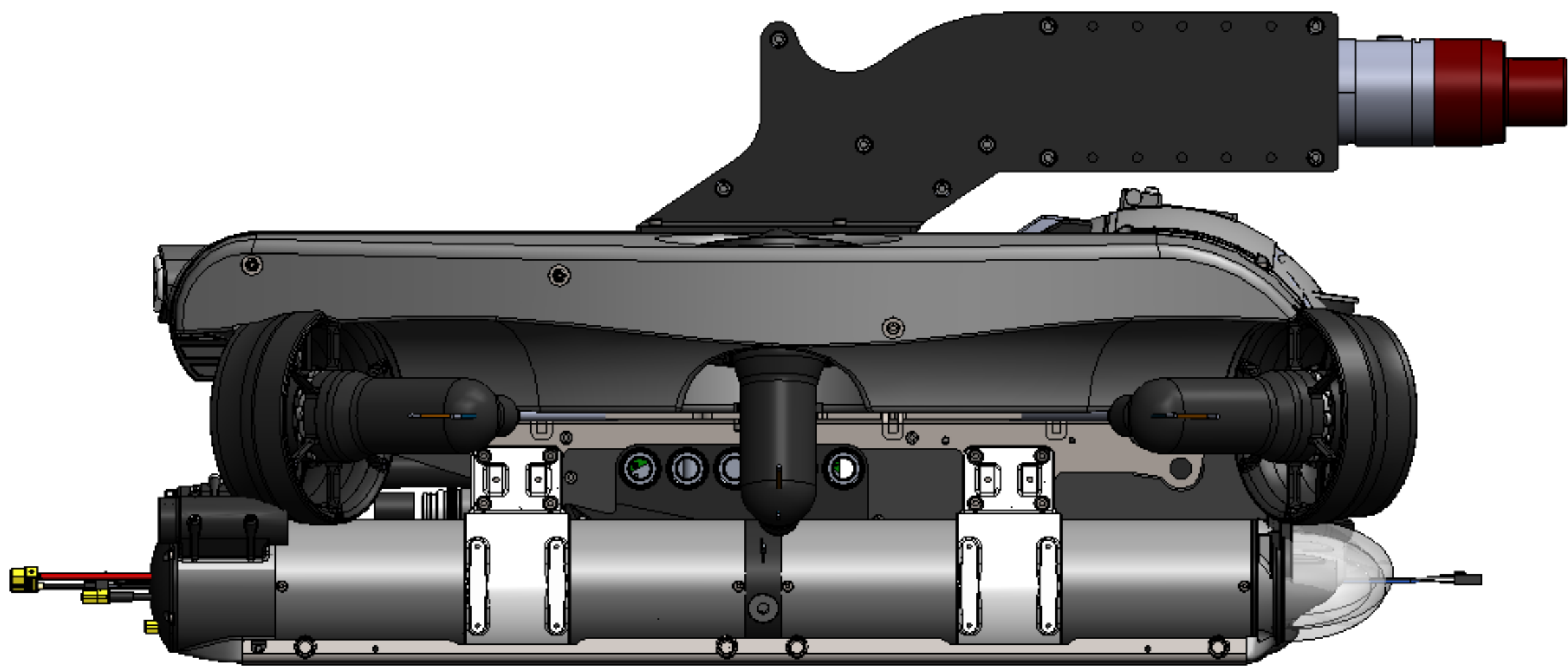
BODY MATERIAL

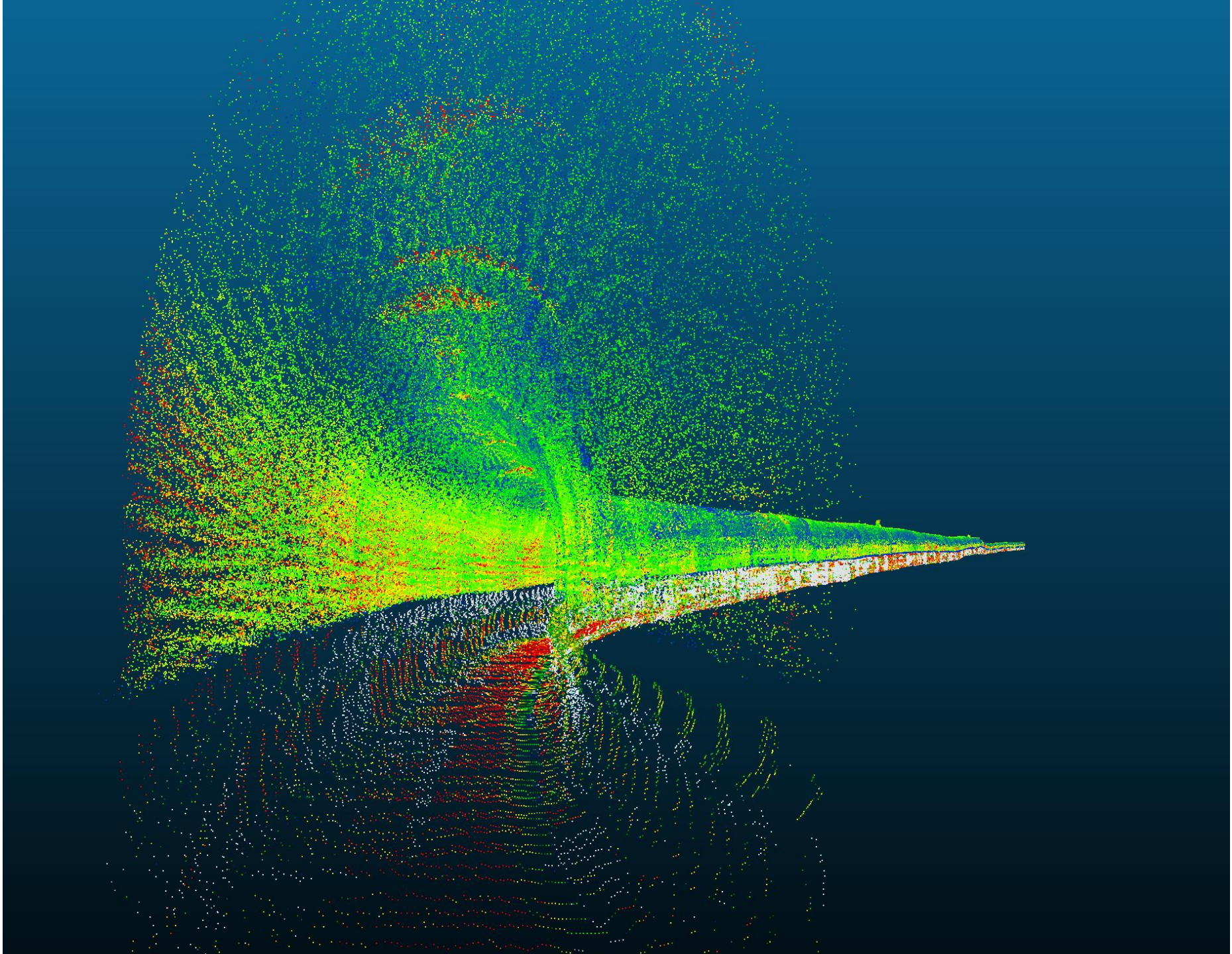
Aluminum + stainless steel

TRANSPORT

Two wheeled Pelican cases





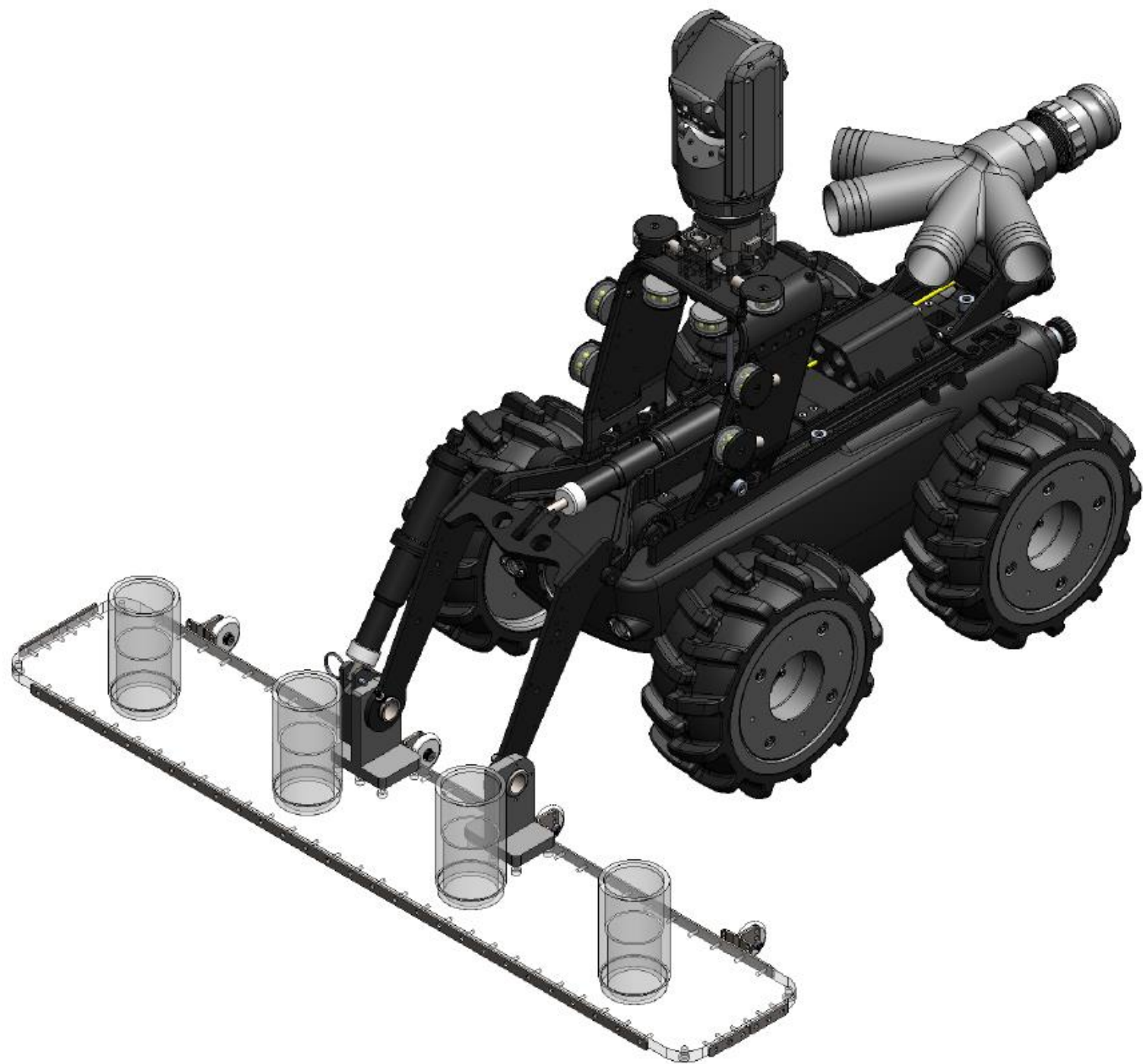


Cleaning Robots



2019-09-18 12:08:38 DTJOB_-19__27C__183_1.4M



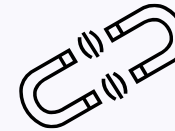


Pipe Crawling Robots

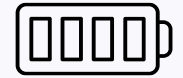
A-150 Confined Space Crawler



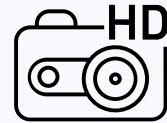
Fully submersible



Magnetically Coupled
Drives



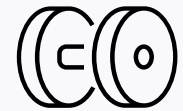
Battery Operated



High Definition
Camera

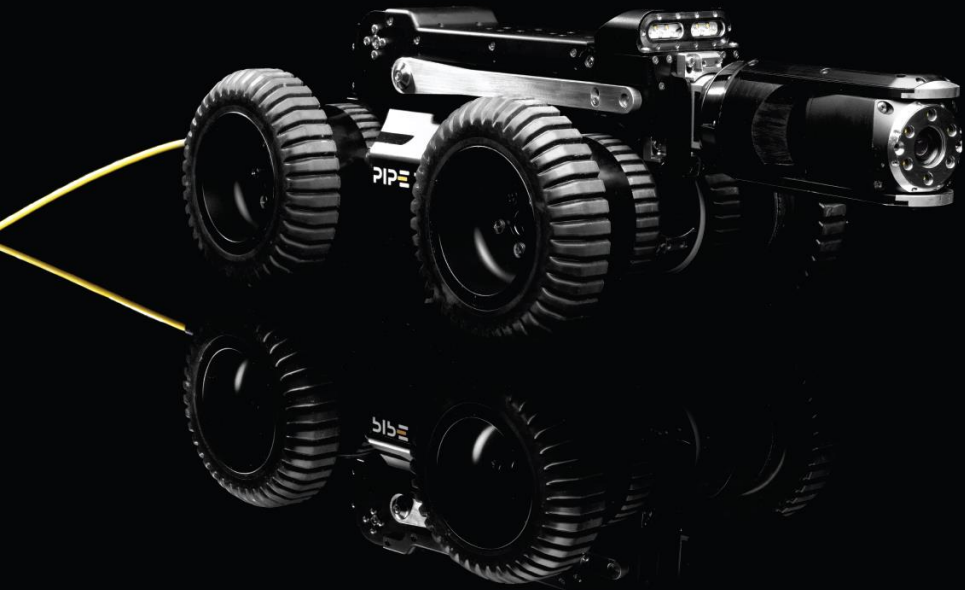


Direct Power Options

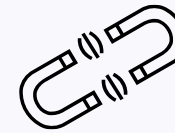


Durable

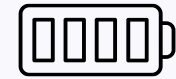
A-200 Confined Space Crawler



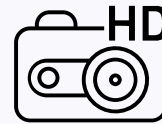
Fully submersible



Magnetically Coupled
Drives



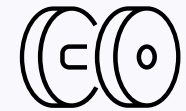
Battery Operated



High Definition
Camera



Direct Power Options

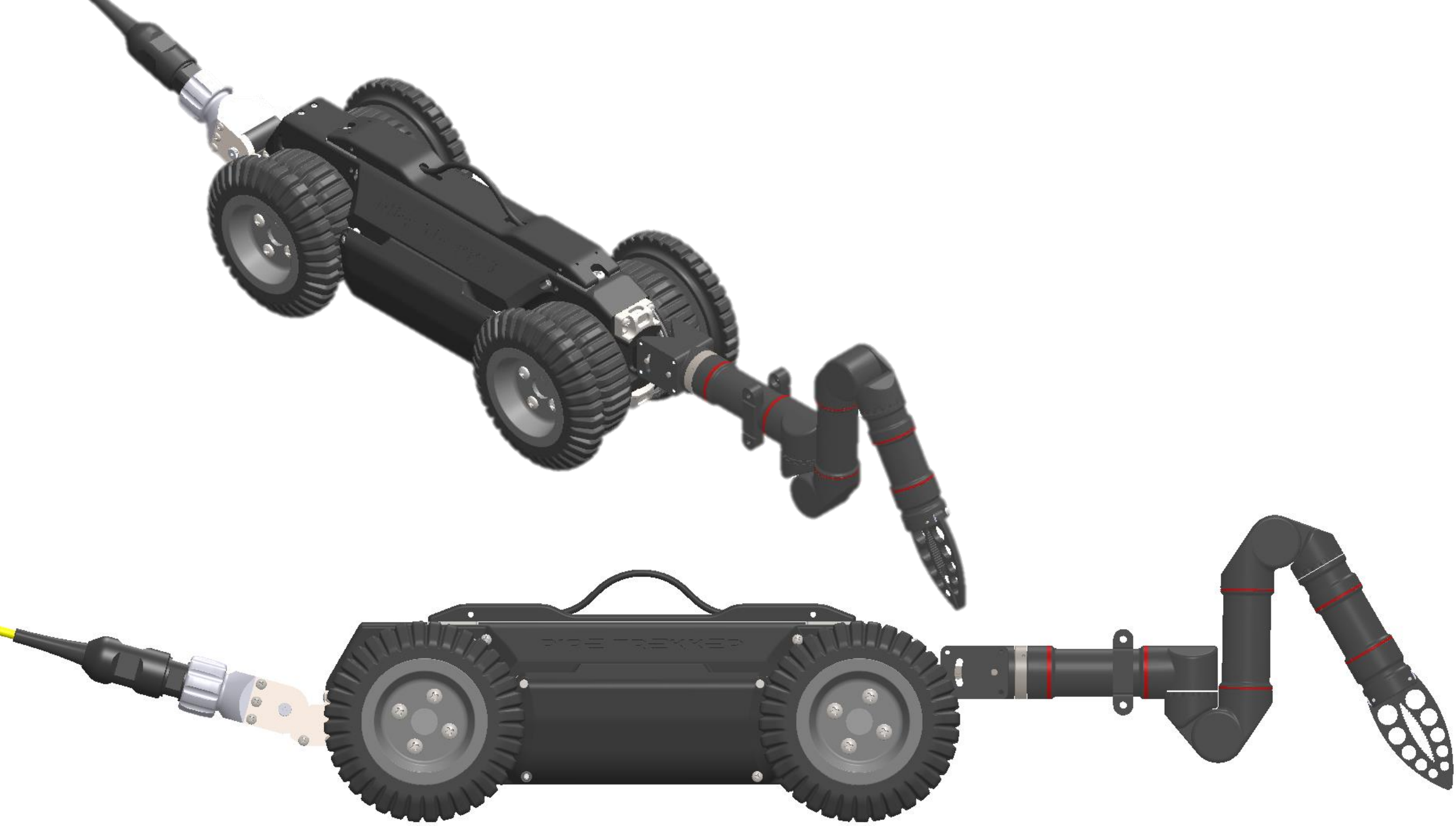


Durable









SOME OF OUR CUSTOMERS





Any questions?

Andrew Lawrence

Senior Account Manager

p | +1-519-504-6733

e | alawrence@deeptrekker.com