

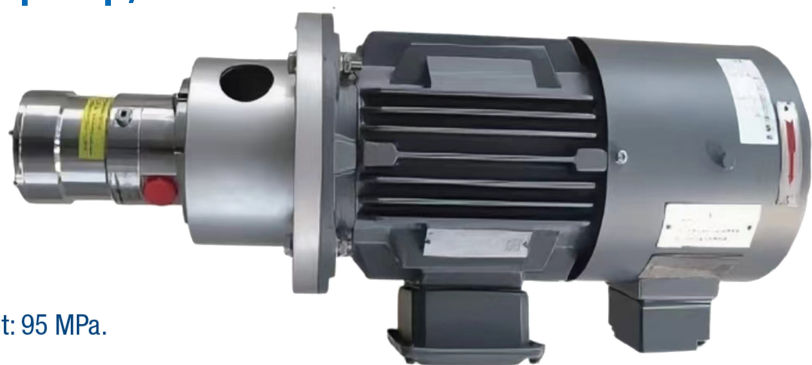


Pumps for Desalination & reverse osmosis

DHP Series axial piston pump (Sea water desalination high pressure pump)

High Pressure Pump

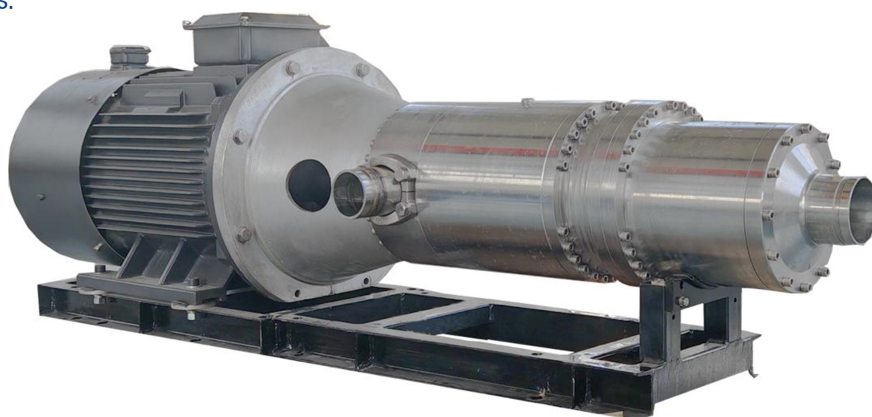
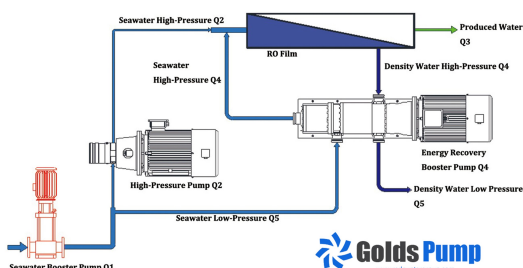
- Replaceable with Danfoss.
- 10000 hours warranty.
- Compact, lightweight, and low noise.
- Maximum flow rate per unit: 150 m³/h, maximum pressure per unit: 95 MPa.
- Water lubricated, no oil stains. Saves 8% more energy than other oil and air-lubricated plunger pumps.
- Constant flow rate unaffected by pressure fluctuations.



HEX(S)Energy Recovery Booster Pump

Energy Recovery

- Replaceable with Danfoss.
- 10000 hours warranty.
- Maximum flow rate per unit: 140 m³/h, half the size of ERI brand for the same flow rate.
- Integrates the pressure exchanger and motor into a compact unit, preventing energy exchanger stalling and seizure.
- Reserved intelligent control interface for adjusting concentrated water flow.
- Capable of recovering over 98% of hydraulic energy from the water stream, reducing high-pressure pump capacity, and significantly lowering operating costs.





Pumps for Desalination & reverse osmosis

QD(G) Multistage Centrifugal Pump (Sea water desalination high pressure pump)

Operating Data

Diameters of inlet and outlet: 40~300mm

Capacity: $Q=3.75\sim1020\text{m}^3/\text{h}$

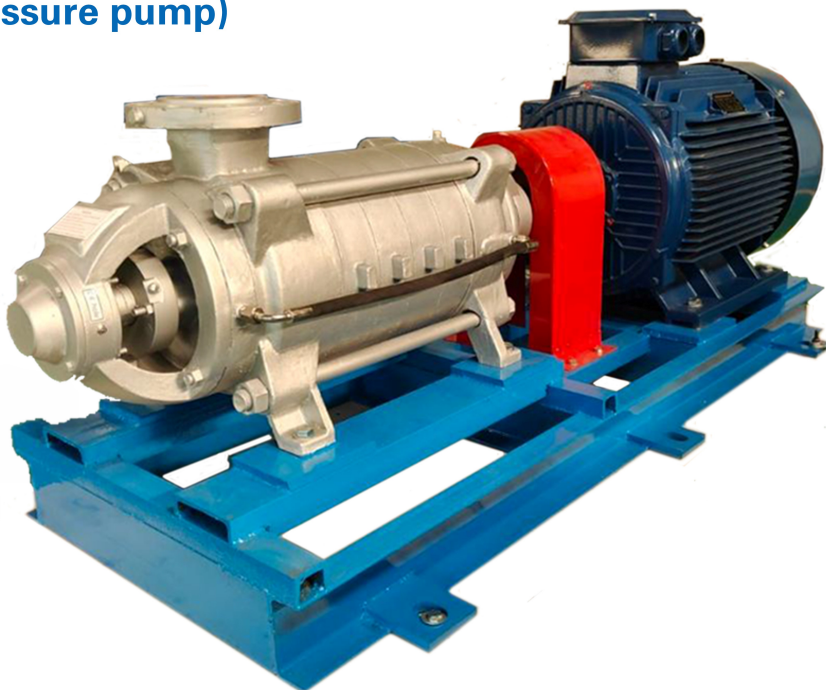
Head: $H=19\sim1080\text{m}$

Material

Casing: Stainless Steel or Duplex S.S

Impeller: Duplex S.S Stainless Steel

Shaft: Stainless Steel



QD(G) Multistage Centrifugal Pump (Sea water desalination high pressure pump)

Operation Conditions

- Thin, clean, non-flammable and non-explosive liquid containing no solid granules and fibers.
- Liquid temperature
 - Normal temperature type: $-15\text{ }^{\circ}\text{C}$ to $+70\text{ }^{\circ}\text{C}$
 - Hot water type: $-15\text{ }^{\circ}\text{C}$ to $+120\text{ }^{\circ}\text{C}$
- Ambient temperature: up to $40\text{ }^{\circ}\text{C}$
- Altitude: up to 1000 m

Applications

- Water treatment ultrafiltration systems
- Reverse osmosis systems





SVM(T) STAINLESS STEEL VERTICAL
MULTISTAGE CENTRIFUGAL PUMP



Easy to Use

- **Water Supply:** Water plant filtration and transmission, water plant zoning water delivery, main booster, high-rise building booster.
- **Industrial Pressurization :** Process water systems, cleaning systems high-pressure flushing systems, fire-fighting systems.
- **Industrial fluid transfer :** Cooling and air conditioning systems, boiler feed and condensing systems, machine tool sets, acids and alkalis.
- **Water treatment:** Ultrafiltration systems, reverse osmosis systems distillation systems, separators, swimming pool.
- **Irrigation:** Agricultural irrigation, sprinkler irrigation, drip irrigation.



A stainless steel centrifugal pump with a black motor and mounting bracket. The pump has a cylindrical body with a flange on the left side and a top-mounted access point. The motor is black with a label and is mounted on a black base.

- Water treatment.
- Industrial washers and dishwashers.
- Process water pressurization, garden sprinkler irrigation.
- Industrial process water heating and cooling.
- machine tool cooling, lubrication.
- Air-conditioning systems, chillers.
- Air freshening, humidification equipment.
- Water supply and pressurization.
- Fertilizer application, metering systems.



Pumps for Desalination & reverse osmosis

NZM

HORIZONTAL STAINLESS STEEL
CENTRIFUGAL PUMP



High Security



Stable Property



Energy Saving
and Environmental
Protection



Large Flow



High Head



Easy to Use



Technical data:

Capacity: 12.5~320m³/h
Head: 13~68m
Power: 1.1~90KW(1.5~122HP)
Speed: 2900r/min
DN: 32~150mm
Material: SS304 -SS316

Application:

Industrial and urban water supply and drainage, high-rise building water pressure, garden sprinkler irrigation, fire-fighting pressure, long-distance transmission, HVAC refrigeration cycle, bathrooms and other cold and warm water circulation pressure and equipment.

MHI

STAINLESS STEEL HORIZONTAL
MULTISTAGE CENTRIFUGAL PUMP



High Security



Stable Property



Energy Saving
and Environmental
Protection



Large Flow



High Head



Easy to Use

Technical data:

Rated Capacity: 2~16m³/h
Rated Head: 20~33m
Max Capacity: 5~26m³/h
Max Head: 22~48m
Power: 0.37~2.2KW(0.5~3HP)
Speed: 2900r/min
DN: 25~50mm
Material: SS304

Application:

- Water supply and pressurization.
- Hot water circulation and heating system.
- Air conditioning system.
- Industrial circulation system.
- Wash and spray irrigation system.
- Various machine matching.





Pumps for domestic and Sewage

WQK CUTTING SUBMERSIBLE SEWAGE PUMPS



Technical data:

Capacity: 7~220m³/h
Head: 9~55m
Power: 1.1~15KW(1.5~20HP)
Speed: 2860r/min
DN: 50~200mm

Application:

- WQK Cutting Submersible Sewage Pumps is mainly used for engineering sewage and domestic sewage.
- Used in construction sites, engineering foundation construction, municipal facilities and waterworks.
- Underground sewage discharge in basements, civil air defense pits and subways of various high-rise buildings.
- Sewage treatment and circulating water transportation in small and medium- sized enterprises.
- Slag slurry pumping in food, paper making, brewing, iron and steel, nonferrous metals, leather making, textile, pharmaceutical, cement plants and other factories and mines.
- Chicken farms, pig farms, various breeding industries, fish ponds are used for pumping water, clearing ponds and oxygenation. In septic tanks are used for pumping human, animal excrement and urine.

DGWQ SMALL SUBMERSIBLE PUMP

Technical data:

Capacity: 1.2~80m³/h Head: 6~38m
Power: 0.25~3KW(0.35~4HP) Speed: 2900r/min
DN: 25~100mm

Application:

- Rural well pumping.
- Agricultural irrigation.
- Garden watering.
- Household water.
- Drainage of industrial water.
- Building construction water supply and drainage and aquaculture.





Pumps for domestic and Sewage

High Pressure Vortex Blower

Model number	Power (KW)	Voltage (V)	Rated current (A)	Maximum flow (m ³ /h)	Maximum vacuum (KPa)	Maximum pressure (KPa)	Weight (KG)
XGB220	0.7	220/380	3.75/2.15	103	-24	24	16
XGB320	0.85	220/380	4.2/2.4	110	-21	24	17
	1.3	220/380	5.7/3.3	110	-23	23	18
XGB420	1.6	220/380	7.5/4.3	150	-28	28	25
	2.2	220/380	9.7/5.6	150	-33	42	24.7
XGB520	2.2	220/380	9.7/5.6	230	-29	33	25
	3.0	380	7.2	230	-34	36	40
XGB720	3.0	380	7.2	320	-34	20	48
	4.0	380	9.0	320	-34	31	53
	5.5	380	13.3	320	-44	50	66
	7.5	380	16.7	320	-44	57	73
XGB820	5.5	380	13.3	520	-52	67	83
	7.5	380	16.7	520	-53	68	86
	11	380	28	520	-55	70	104
	15	380	32.5	520	-57	72	120



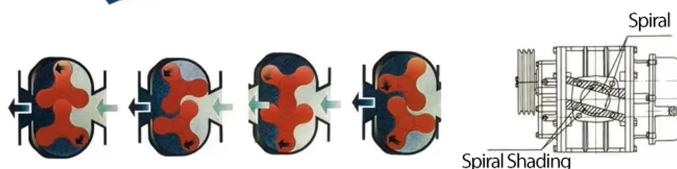
Roots Blower CCR model

WORKING PRINCIPLE DIAGRAM

...



The conventional roots type rotary blowers, either two-lobes or three-lobes, have the compression mechanism that the compression occurs upon reverse-flowing of high pressure air instantly when the rotor end is opened in line with the discharge opening.





SANITARY CENTRIFUGAL PUMP

Specification

1T-500T, 0.55KW-75KW

Materials

SUS304, SUS316L (In the selection of materials, all parts that contact the materials such as pump body, pump cover and impeller are made of SUS316L or SUS304 stainless steel.)

Standards

DIN, SMS

Impeller

Open impeller, without dead corner of sanitation

Work condition

The sanitary centrifugal pump adopts horizontal conveying with high and low liquid levels. It is not of self-priming type. (Please select the self-priming pump for self-priming type.)

Surface Treatment

The liquid receiving part is subject to polishing treatment and other parts matte or sandblasting treatment

Maximum inlet pressure

0.5MPa

Temperature range

-10°C to + 140°C(EPDM)

Washable mechanical seal

Water pressure: Max. 0.1MPa;
Water volume: 0.25-0.5L/min

