

# DOSING PUMP & MIXERS

2025

EDITION FOR  
REDAWATER GROUP



### ■ Clever

#### PVDF pump head standard, All functions in one pump

- Cover 0,4 to 110 l/h with an output pressure up to 20 Bar
- 1 Casing allows skids to be pre-constructed, as the fixing points remain constant, and the pumps can be selected on confirmation of the dosing flow
- Inventory Reduction. Reduce spares stock holding.



### ■ Compatible

#### PVDF pump head and ceramic ball valve as standard

PVDF is suitable for almost all chemical used in the Industrial, Waste Water Treatment and potable Water applications. The use of Ceramic balls as standard improves the pumping reliability and the chemical compatibility of the whole liquid end. Full chemical compatibility.

### ■ Reliable

#### Diaphragm pure solid PTFE

The advanced design and manufacturing process allows the diaphragm to have a unique life expectancy.

Made of pure solid PTFE, the diaphragm is compatible with most chemicals.

Routine diaphragm replacement is no longer a requirement.

Reduced maintenance.

Full chemical compatibility.

### ■ Steady dosing performance

Stabilized Multi Power Supply  
100- 240 Vac 50/60 Hz  
with reduced consumption

### ■ Dosing mode

The pump head has a manual priming valve, The flow rate is manually or automatically (by signal input) adjustable from 0 (pump stop) to 100% of the max flow rate, Moreover it is equipped with the low level alarm to stop or not the pump.

### ■ Pumps Head

BODY	PVDF/PVC
BALL VALVES	Ceramic
SEAT VALVE	FPM/EPDM
DIAPHRAGM	PTFE

The parts in contact with the liquid have been chosen in order to guarantee perfect compatibility with most chemical normally in use.

### ■ Installation

Horizontally-mounted( standard)  
Wall-mounted(optional, need to buy bracket)

# Solenoid Diaphragm Metering Pump

MF Series

Your Dosing Partner

## Pumps identification

Series	
MF	constant flow rate manually adjustable
ML	constant flow rate manually adjustable and level control input
MG	constant flow rate manually adjustable, with proportional flow rate according to an external analog (4-20 mA)
MC	constant flow rate manually adjustable, with proportional flow rate according to an digital signal (water meter)

Model	Flow rate (L/H)	Pressure (Bar)	Stroke frequency (n/min)	Consumption (w)	Connections IN /OUT(mm)	Weight (kg)	Carton size L×W×H(mm)
101	1	10	160	12	4/6	3	240×210×190
100	3	9	160	12	4/6	3	
	5	8					
	9	2					
	13	0.1					
102	7	16	300	40	4/6	4	290×280×210
	10	10					
	15	5					
	20	1					
103	20	5	300	40	8/12	4	
	32	4					
	62	2					
	110	0.1					
104	15	2	200	40	6/9	3	240×210×190
105	20	1					
106	2.5	20	120	40	4/6	4	290×280×210
	3	18					
	4.2	14					
	5	8					
107	12	16	300	40	6/9	4	
	15	10					
	18	5					
	20	4					
	30	1					

### Liquid end material

T

Diaphragm . PTFE      Balls . Ceramic

### Pump head

P

PVC

D

PVDF

### Seals

H

FPM

E

EPDM

### Power supply

12

220V 50HZ

11

110-240V 50HZ/60HZ

### Options

00

Standard

MF

100

T

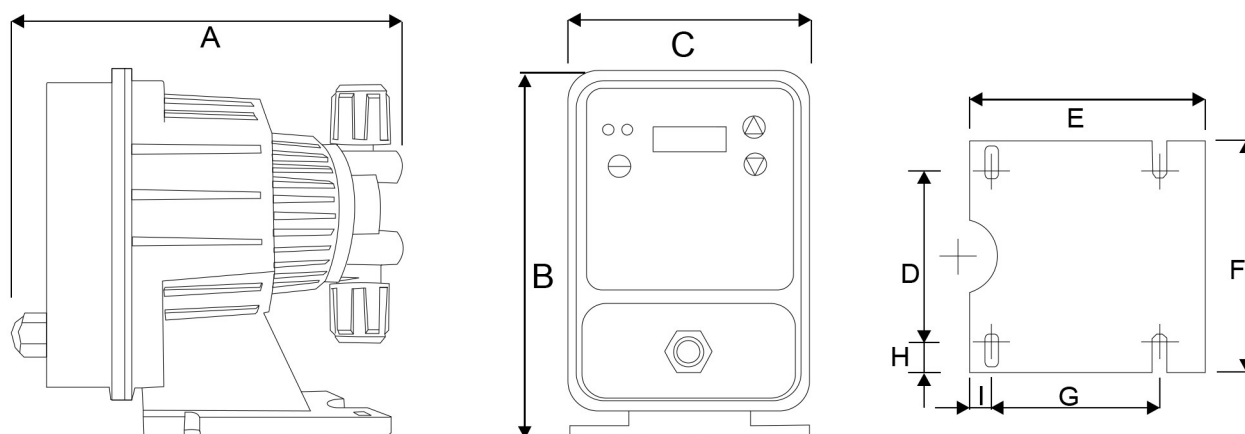
P

H

12

00

### ■ Mounting dimension drawing



Model	A	B	C	D	E	F	G	H	I
101/100/104/105	180	154	99	72	98	98	70	13	9
102/103/106/107	228	190	118	88	100	100	70	13	9

### ■ Installation kit

The pump are supplied complete with the indispensable accessories for their correct installation as follows;



Suction tube  
(1.5m, 2m)



Delivery tube  
( 1.5m, 2m)



Injection valve  
(PVC DN15)



Foot valve  
( PVC )



# Solenoid Diaphragm Metering Pump

## A Series

Your Dosing Partner

A is a simple solenoid dosing pump, operating with a micro-processor to manage the dosing.  
Flow rate up to 110L/H,  
Let you have more choices.

Its external enclosure has an Ip65 which guarantees a protection versus splashing water and aggressive environments.



### ■ Dosing model

The pump head has a manual priming valve.  
The flow rate is manually or automatically (by signal input) adjustable from 0 (pump stop) to 100% of the max flow rate.  
Moreover it is equipped with the low level alarm to stop or not the pump

### ■ Reliable Diaphragm pure solid PTFE

The advanced design and manufacturing process allows the diaphragm to have a unique life expectancy.  
Made of pure solid PTFE, the diaphragm is compatible with most chemicals.  
Routine diaphragm replacement is no longer a requirement.  
Reduced maintenance.  
Full chemical compatibility.

### ■ Pumps head

BODY	PVDF/PVC
BALL VALVES	Ceramic
SEAT VALVE	FPM/EPDM
DIAPHRAGM	PTFE

The parts in contact with the liquid have been chosen in order to guarantee perfect compatibility with most chemical normally in use.

### ■ Scope of supply

Chemical Metering Pump  
3Meter Suction Discharge trbing  
Suction Filter Cum Foot Valve  
Injection Vave  
O&M Manual

### ■ Wall-mounted

The pump can be fixed on wall by fixing bracket provide with the pump or top of drums by the optional foot fixing bracket.

# Solenoid Diaphragm Metering Pump

A Series

Your Dosing Partner

## Pumps identification

### Series

ABF	Analogue dosing pump with constant flow rate manually adjustable
ABL	Analogue dosing pump with constant flow rate manually adjustable and level control input
ABG	Analogue dosing pump with constant flow rate manually adjustable, with proportional flow rate according to an external analog (4-20 mA) or digital signal (water meter)
ATG	Digital dosing pump with constant flow rate manually adjustable, with proportional flow rate according to an external analog (4-20 mA) or digital signal (water meter)
APR	Digital dosing pump with pH/Redox control meter built in

Model	Flow rate (L/H)	Pressure (Bar)	Stroke frequency (n/min)	Consumption (w)	Connections IN /OUT(mm)	Weight (kg)	Carton size L×W×H(mm)
101	1	10	160	12	4/6	3	240×210×190
100	3	9	160	12	4/6	3	
	5	8					
	9	2					
	13	0.1					
102	7	16	300	40	4/6	4	290×280×210
	10	10					
	15	5					
	20	1					
103	20	5	300	40	8/12	4	
	32	4					
	62	2					
	110	0.1					
104	15	2	200	40	6/9	3	240×210×190
105	20	1					
106	2.5	20	120	40	4/6	4	290×280×210
	3	18					
	4.2	14					
	5	8					
107	12	16	300	40	6/9	4	
	15	10					
	18	5					
	20	4					
	30	1					

### Liquid end material

T

Diaphragm . PTFE      Balls . Ceramic

### Pump head

P

PVC

D

PVDF

### Seals

H

FPM

E

EPDM

### Power supply

12

220V 50HZ

11

110-240V 50HZ/60HZ

### Options

00

Standard

APR

100

T

P

H

12

00

# Mechanical Diaphragm Metering Pumps

## BV Series

Your Dosing Partner

BV Series is a mechanical diaphragm metering pump with spring return and PPS housing.

### Features

FLOW RATE	from 10 to 230 L/h
MAX PRESSURE	5 bar
STROKE RATE	30-50-100-150-166 strokes/ minute
DIAPHRAGM DIAMETER	70 mm
STROKE LENGTH	4-5 mm



### Technical features

Model	Flow rate (L/H)	Max Pressure (Bar)	Consumption (w)	Connections		Weight (kg)	Carton size L x W x H(mm)
BV010	11	5	60	DN15 (Standard)	9×15 or J1S10K15A (Option)	7.5	400×300×350
BV020	21	5					
BV030	41	5					
BV050	65	5					
BV070	83	5					
BV100	120	5					
BV120	166	3	90				
BV220	230	3					

### Pump head materials

PVC, PVDF, 316 PUMP HEAD

PTFE DIAPHRAGM

MAX DOSAGE TEMPERATURE

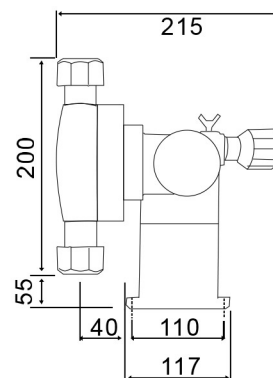
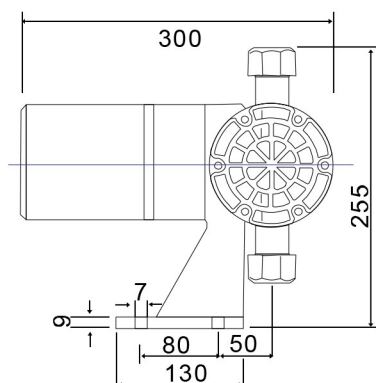
- PVC pump head 40°C
- PVDF pump head 40°C
- 316 pump head 90°C



### Motor characteristics

Power Supply	380v-50/60hz-3 phase 220v- 50/60hz-single phase
Protection Class	Ip55; Insulation:F

### ■ Dimensional drawings



### ■ Liquid end material

Pump head	Diaphragm	Valves	Valves seats	Seal
PVC	PTFE	Ceramic	PVC	FPM
PVDF	PTFE	Ceramic	PVDF	FPM(Standard) EPDM(Option)
SUS304	PTFE	SUS304	SUS304	FPM(Standard) EPDM(Option)

### ■ Pump identification

BV	100	T	P	H	33	00
Series	Flow rate	Diaphragm materials	Pump head materials	Connections	Motor	Optional
		T:PTFE	P:PVC D:PVDF S:SS304	H:hard pipe R:hose pipe Y: In-hose pipe out-hard pipe	11:1Φ110V(50/60Hz) 12:1Φ220V(50/60Hz) 32:3Φ220V(50/60Hz) 33:3Φ380V(50/60Hz)	

### ■ Installation kit ( optional )

—— for PVC pump head only



Suction tube  
( PVC 2m )



Delivery tube  
( PE 2m )



Injection valve



Foot vavle



# Mechanical Diaphragm Metering Pumps

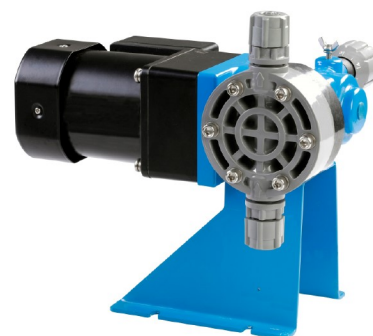
NV Series

Your Dosing Partner

NV Series is a mechanical diaphragm metering pump with spring return aluminium alloy body.

## Features

FLOW RATE	from 17 to 228 L/h
MAX PRESSURE	10 bar
STROKE RATE	30-50-100-150-166 strokes/ min
DIAPHRAGM DIAMETER	90 mm
STROKE LENGTH	4-5 mm



## Technical features

Model	Flow rate (L/H)	Max Pressure (Bar)	Consumption (w)	Connections	Weight (kg)	Carton size L x W x H(mm)
NV10	17	10	60	6×11	8.5	400×300×350
NV20	28	10				
NV30	45	10				
NV50	52	5				
NV70	114	5	90	9×15	9.5	
NV100	168	5				
NV120	228	4				

## Pump head materials

PVC · PVDF · 316 PUMP HEAD

PTFE DIAPHRAGM

MAX DOSAGE TEMPERATURE

- PVC pump head 40°C
- PVDF pump head 40°C
- 316 pump head 90°C



## Motor characteristics

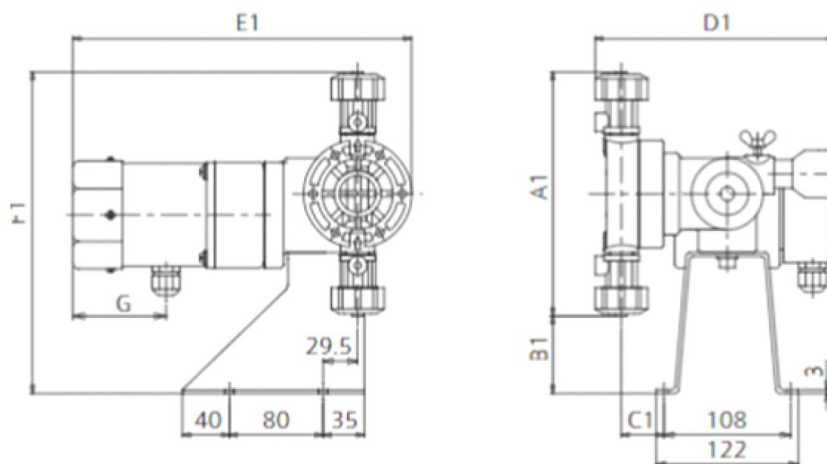
Power Supply	380v-50/60hz-3 phase 220v- 50/60hz-single phase
Protection Class	Ip55; Insulation:f

# Mechanical Diaphragm Metering Pumps

NV Series

Your Dosing Partner

## ■ Dimensional drawings



## ■ Liquid end material

Pump head	Diaphragm	Valves	Valves seats	Seal
PVC	PTFE	Ceramic	PVC	FPM
PVDF	PTFE	Ceramic	PVDF	FPM(Standard) EPDM(Optional)
SUS316	PTFE	SUS316	SUS16	FPM(Standard) EPDM(Optional)

## ■ Pump identification

NV	100	T	P	H	33	00
Series	Flow rate	Diaphragm materials	Pump head materials	Connections	Motor	Optional
		T:PTFE	P:PVC D:PVDF S:SS316	H:hard pipe R:hose pipe Y: In-hose pipe out-hard pipe	11:1Φ110V(50/60Hz) 12:1Φ220V(50/60Hz) 32:3Φ220V(50/60Hz) 33:3Φ380V(50/60Hz)	

## ■ Lnstallation kit ( optional )

—— for PVC pump head only



Suction tube  
( PVC · 2m )



Delivery tube  
( PE · 2m )



Injection valve



Foot vavle

To be used with low viscosity liquids in medium capacity tank or basin to mix or prepare chemical solution.

### ■ Propeller geometry

- Better mixing
- Less power required
- Pull the chemical from the bottom of the tank with less vibration when chemical container is partially empty

### ■ Motor connection

- Shaft is more balanced thus vibration are reduced
- Stainless steel type is now coated with epoxy resin for better chemical resistance and less rotating components, thus the wear is reduced.

### ■ Spare parts available

- Motor+flange
- Propeller
- Shaft

#### Motor

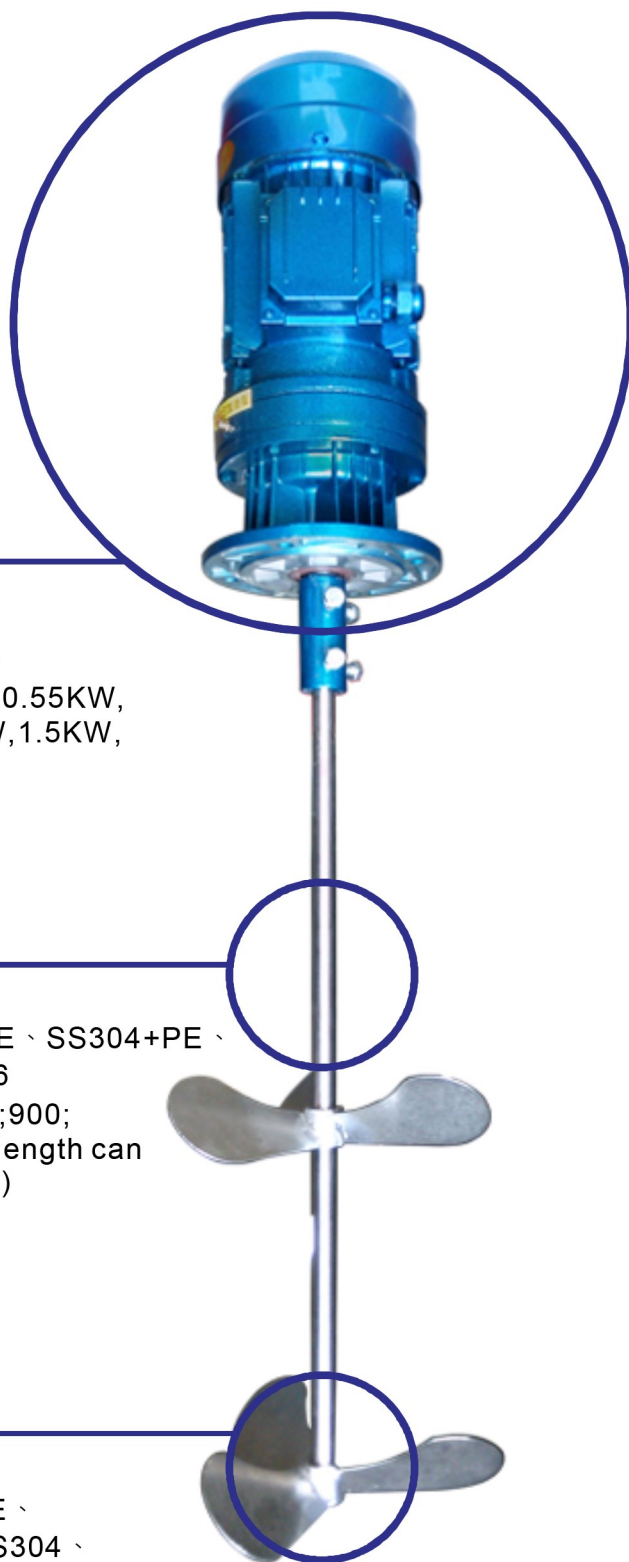
- Single-phase or 3-phases-IP55
- 0.37KW, 0.4KW, 0.55KW, 0.75KW, 1.1KW, 1.5KW, 2.2KW

#### Shaft

- Carbon steel+PE 、 SS304+PE 、 SS304 、 SS316
- Length: 600; 800; 900; 1100mm ( The length can be customized )

#### Propeller

- Carbon steel+PE 、 SS304+PE 、 SS304 、 SS316—3 blades
- Diameter: 90mm



### Texture



carbon steel+PE、SS304+PE



SS304、SS316

### Mesure

Model	Shaft (mm)	Propeller (mm)	Speed (rpm)	Material (Shaft+ Propeller)	Motor (w)
JB300PSF00	300	200	136、88、 65、52、 43、35、 25、21、 17	Carbon steel+PE	Voltage: 220V、380V、480V、 0.25KW、0.37KW、 0.4KW、0.55KW、 0.75KW、1.1KW
JB400PSF00	400	200		SS304+PE	
JB600PSF00	600	200		SS304	
JB800PSF00	800	200/300		SS316	
JB900PSF00	900	200/300			
JB1000PSF00	1000	200/300			
JB1200PSF00	1200	200/300			

All the model can be customized







[www.redawatergroup.com](http://www.redawatergroup.com) - [info@redawatergroup.com](mailto:info@redawatergroup.com)

---

