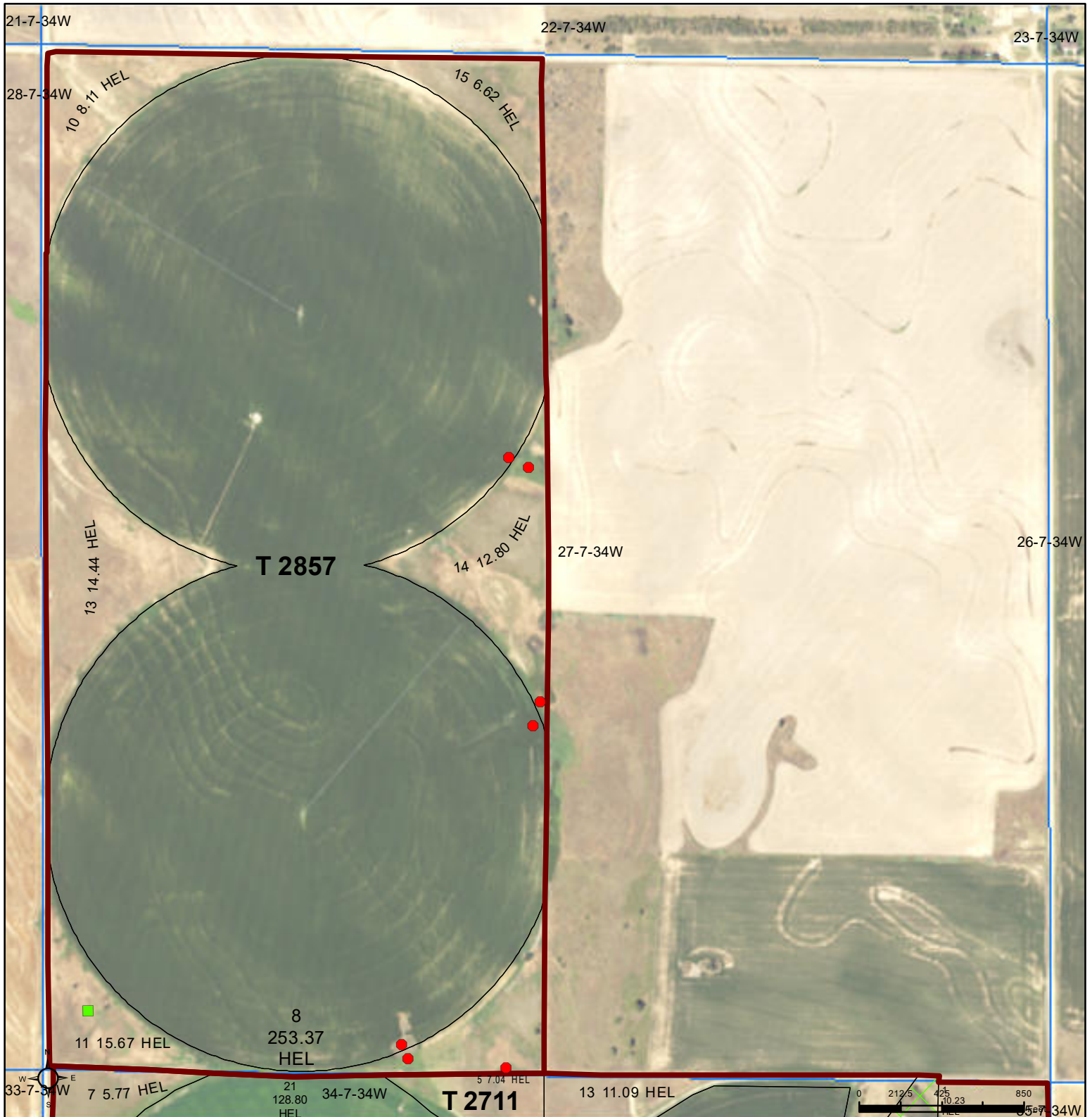




United States  
Department of  
Agriculture

## Hayes County, Nebraska



**Common Land Unit**   Tract Boundary   PLSS

  Non-Cropland  
  Cropland

### Wetland Determination Identifiers

- Restricted Use
- ▼ Limited Restrictions
- Exempt from Wetland Provisions

United States Department of Agriculture (USDA) Farm Service Agency (FSA) maps are for FSA Program administration only. This map does not represent a legal survey or reflect actual ownership; rather it depicts the information provided directly from the producer and/or National Agricultural Imagery Program (NAIP) imagery. The producer accepts the data 'as is' and assumes all risks associated with its use. USDA-FSA assumes no responsibility for actual or consequential damage incurred as a result of any user's reliance on this data outside FSA Programs. Wetland identifiers do not represent the size, shape, or specific determination of the area. Refer to your original determination (CPA-026 and attached maps) for exact boundaries and determinations or contact USDA Natural Resources Conservation Service (NRCS).

**2024 NAIP Pre-Production Ortho Imagery**  
Alternate year NAIP imagery may be displayed for tracts physically located in other states, along state borders, or years of partial imagery acquisition.

**2026 Program Year**  
Map Created September 24, 2025

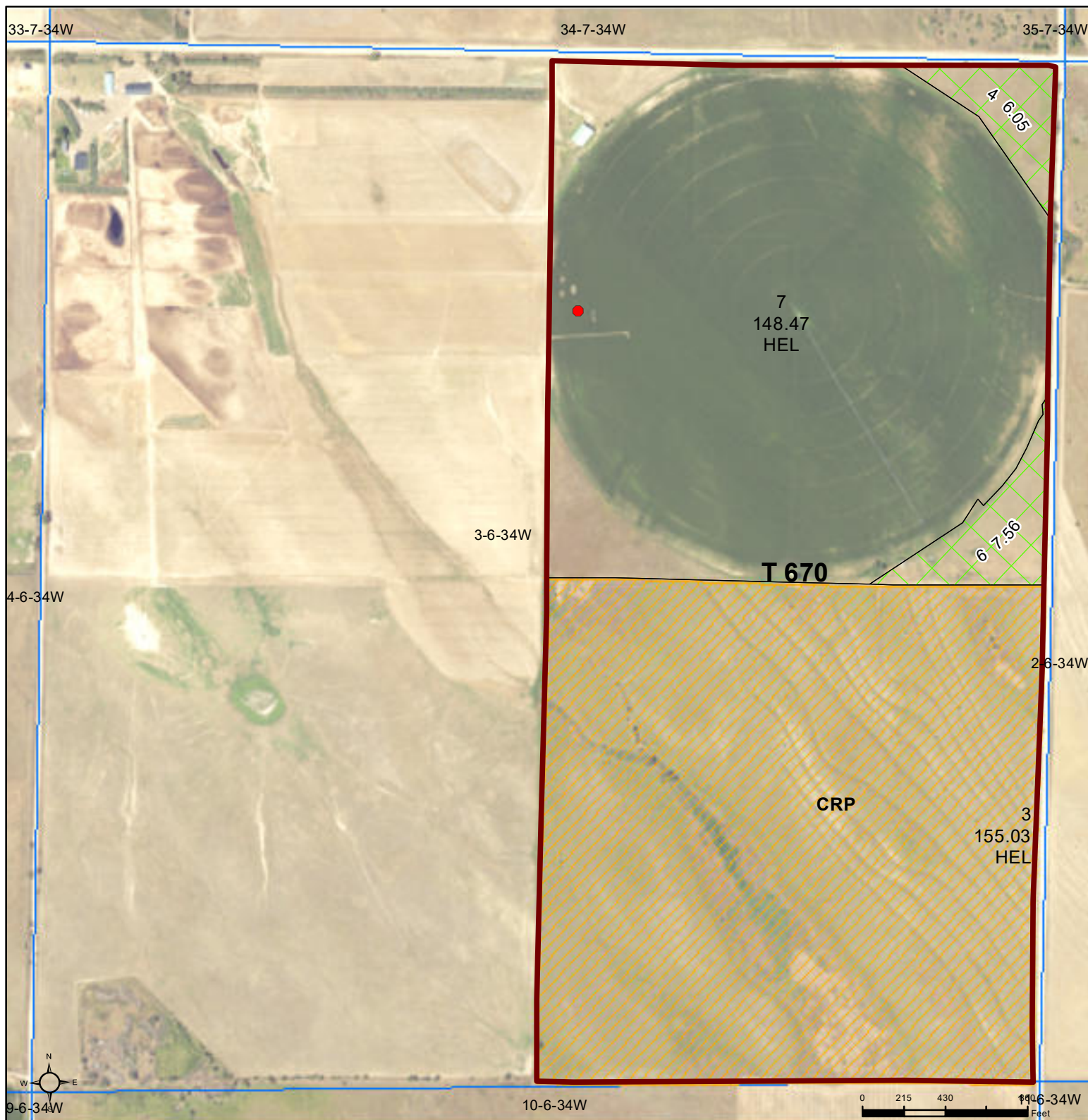
**Farm 3067**

**27-7-34W**



United States  
Department of  
Agriculture

## Hayes County, Nebraska



### Common Land Unit

- Non-Cropland
- Cropland

CRP

Tract Boundary

PLSS

### Wetland Determination Identifiers

- Restricted Use
- Limited Restrictions
- Exempt from Wetland Provisions

United States Department of Agriculture (USDA) Farm Service Agency (FSA) maps are for FSA Program administration only. This map does not represent a legal survey or reflect actual ownership; rather it depicts the information provided directly from the producer and/or National Agricultural Imagery Program (NAIP) imagery. The producer accepts the data 'as is' and assumes all risks associated with its use. USDA-FSA assumes no responsibility for actual or consequential damage incurred as a result of any user's reliance on this data outside FSA Programs. Wetland identifiers do not represent the size, shape, or specific determination of the area. Refer to your original determination (CPA-026 and attached maps) for exact boundaries and determinations or contact USDA Natural Resources Conservation Service (NRCS).

### 2024 NAIP Pre-Production Ortho Imagery

Alternate year NAIP imagery may be displayed for tracts physically located in other states, along state borders, or years of partial imagery acquisition.

2026 Program Year

Map Created September 24, 2025




Farm **3067**

**3-6-34W**





**Common Land Unit**  
 Non-Cropland  
 Cropland  
 Tract Boundary  
 PLSS

**Wetland Determination Identifiers**  
 Restricted Use  
 Limited Restrictions  
 Exempt from Wetland Provisions

**2024 NAIP Pre-Production Ortho Imagery**  
 Alternate year NAIP imagery may be displayed for tracts physically located in other states, along state borders, or years of partial imagery acquisition.

**2026 Program Year**  
 Map Created September 24, 2025

**Farm 3067**

**34-7-34W**

United States Department of Agriculture (USDA) Farm Service Agency (FSA) maps are for FSA Program administration only. This map does not represent a legal survey or reflect actual ownership; rather it depicts the information provided directly from the producer and/or National Agricultural Imagery Program (NAIP) imagery. The producer accepts the data 'as is' and assumes all risks associated with its use. USDA-FSA assumes no responsibility for actual or consequential damage incurred as a result of any user's reliance on this data outside FSA Programs. Wetland identifiers do not represent the size, shape, or specific determination of the area. Refer to your original determination (CPA-026 and attached maps) for exact boundaries and determinations or contact USDA Natural Resources Conservation Service (NRCS).