

Sample 681-1006275

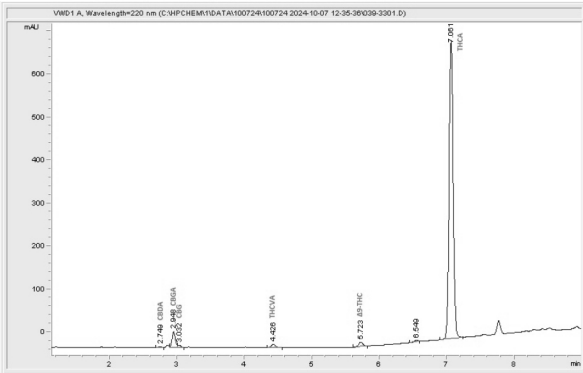
Blue Gusherz Indoor

Sample Submitted: 11-07-2024; Report Date: 11-14-2024

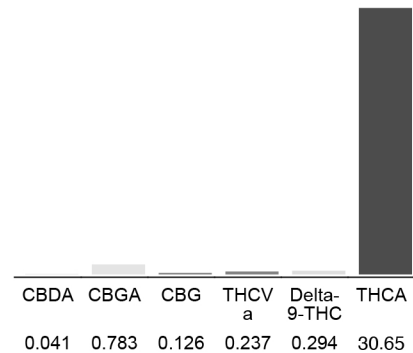
## Blue Gusherz Indoor

Plant Material: Hemp Flower

### Chromatogram



### Cannabinoid Profile



### Cannabinoid Profile by HPLC

0.29%

Delta-9-THC

0.00%

CBD

32.13%

Total Cannabinoids

Cannabinoid	% wt	mg/g
CBDA	0.041	0.41
CBGA	0.783	7.83
CBG	0.126	1.26
THCVa	0.237	2.37
Delta-9-THC	0.294	2.94
THCA	30.65	306.5
Total Cannabinoids	32.13	321.3
Calculated Total THC	28.40	284.04
Calculated CBD Yield	0.04	0.36

Calculated Total THC = Delta-9-THC + 0.877 \* THCA

Calculated Maximum CBD Yield = CBD + 0.877 \* CBDA

Marin Analytics, LLC  
250 Bel Marin Keys Blvd, Suite D4  
Novato, CA 94949

833-321-TEST / info@marinanalytics.com

Mike Clemmons  
Lab Manager