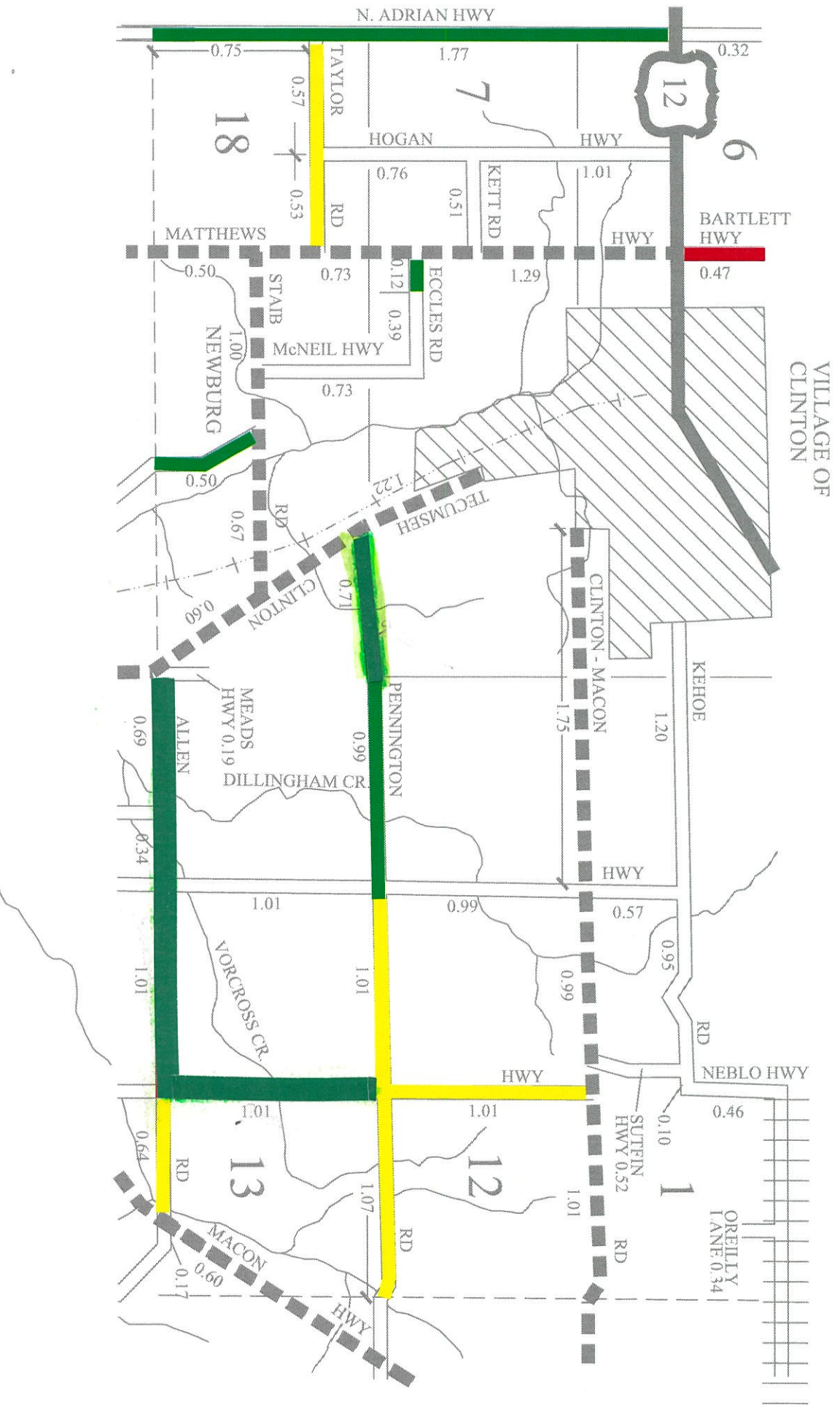


- COUNTY LINE
- CORPORATE LIMITS
- STATE TRUNKLINE
- COUNTY PRIMARY
- COUNTY LOCAL
- AJACENT COUNTY
- CITY OR VILLAGE STREETS

PRIMARY ROAD SYSTEM IS 10.36 MILES
 LOCAL ROAD SYSTEM IS 23.41 MILES

- 1-4 PASER RATING (POOR)
- 5-7 PASER RATING (FAIR)
- 8-10 PASER RATING (GOOD)



**CLINTON TWP
 2019 PASER RATINGS**

